



Incident Management in the DVRPC Region

Championing Traffic Incident Management
in the National Capital Region

John Ward
Deputy Executive Director
Delaware Valley Regional Planning Commission

Wednesday, November 2, 2016



Delaware Valley Regional Planning Commission



- Federally-designated MPO for the 9-county Philadelphia region
 - Created in 1965
 - 352 Municipalities
 - 5.7 Million People
 - 3.0 Million Jobs
-
- Long-Range Plan, Transportation Improvement Program (TIP)
 - Transportation operations, safety, transit, bike/ped, freight, aviation, travel/demographic forecasting, land use planning



DVRPC and Transportation Operations Planning

- \$29M Overall Operating Budget
- 110 Full Time DVRPC Staff
- Not an Operating Agency
- Act as Facilitators and Conveners
- Office of Transportation Operations Management
 - 4 Full Time Staff
 - Unified Planning Work Program: \$300,000
 - TIP (CMAQ): \$933,000



DVRPC's Office of Transportation Operations Management

Planning for Transportation Operations

- Transportation Operations Task Force
- Transportation Operations Master Plan / TSMO Plan
- ITS Regional Architecture
- Use of Archived Operations Data

Special Event Planning / Special Projects

- Papal Visit
- I-76 Corridor Comprehensive Transportation Mgmt Plan

Traffic Incident Management

- Task Forces
- RIMIS / IDRUM

Technical Analysis

- Regional Signal Retiming Project



DVRPC's Task Force Locations

Task Force Locations:

I-76/I-476 Crossroads 1
est. 1999

NJ SAFR 2
est. 2002

Philadelphia 3
est. 2007

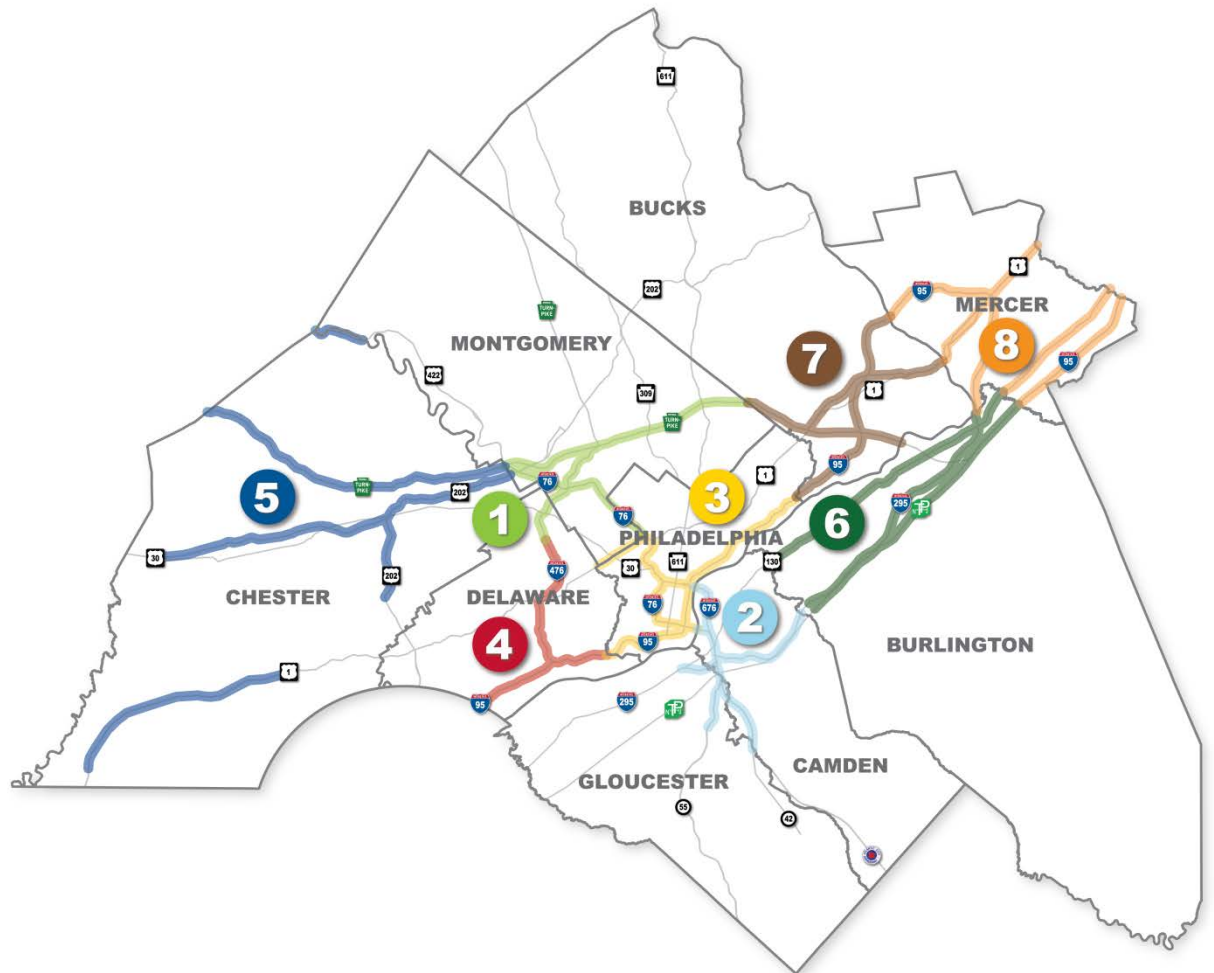
Delaware County 4
est. 2008

US 30 Chester County 5
est. 2009

Burlington County 6
est. 2012

**I-95/US 1
Bucks County** 7
est. 2012

Mercer County 8
est. 2015



DVRPC's Incident Management Program Goals



- Promote National Unified Goal (NUG)
- Integrate Incident Management into the Metropolitan Planning Process
- Provide Cross-disciplinary Training
- Manage Incident Management Task Forces
- Serve as Liaison between Emergency Responders and State/County Agencies
- Provide Software Applications to Emergency Responders



pennsylvania

DEPARTMENT OF TRANSPORTATION





Typical Stakeholders

- Local Police Departments
- Local Fire, Ambulance & EMS
- State Police
- DOT Traffic Operations
- DOT Maintenance Divisions
- Turnpike Authorities
- Bridge Authorities
- HAZMAT Agencies
- Dept. of Environmental Protection
- Towing Agencies
- State Towing Associations
- County 911 Communications
- County Department of Public Safety Offices
- County Coroner / Medical Examiner's Office
- Local State Legislators Offices
- Federal Highway Administration
- County Planning Departments
- Transportation Management Agencies
- Public Works Departments
- MPO



Typical Activities



- Quarterly Meetings
- Elected Chairperson(s)
- Rotating Venues
- Incident De-briefings
- Construction Updates
- Action Plans
- Policy and Procedures Manuals & Guidelines
- FHWA SHRP2 Training
- Cross Training – Towers, Crime Scene, Fatal Accident
- Maintain Contact Lists



Overall Regional Successes



- **Build Relationships**
 - Interagency Coordination
 - Forums to discuss issues
 - Enhance communications
- **Conduct Post Incident Reviews**
- **Facilitate Training**
 - Quarterly meetings, including SHRP2
 - Regional TIM conferences
- **Special Projects**
 - 1/10th mile marker signs
 - Center median guide rails along NJ 42
- **Special Event Planning**
 - Papal Visit
- **Support Statewide TIM Training Efforts**

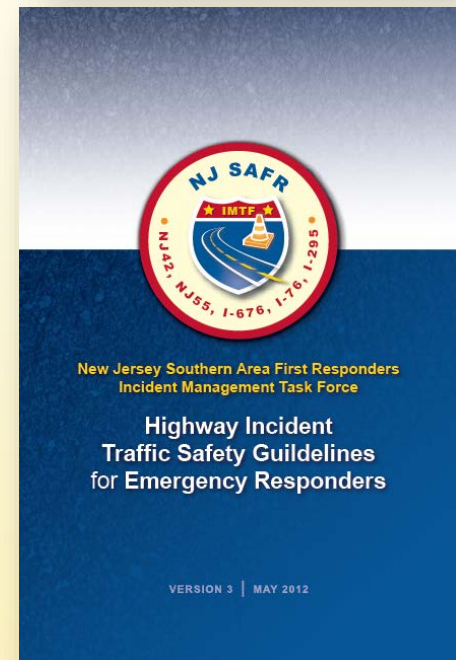
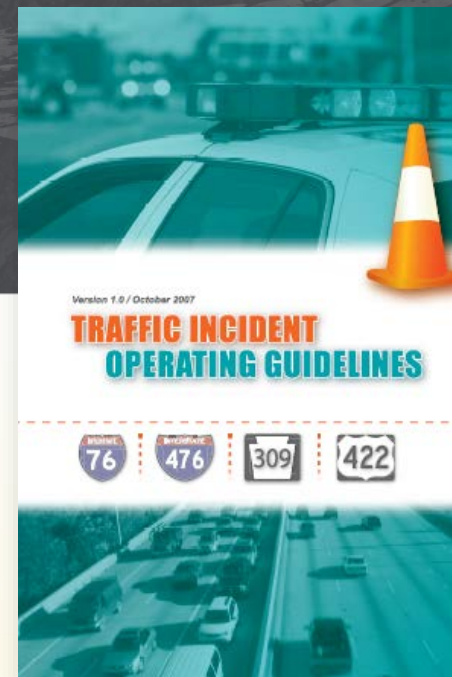


Regional Success: TIM Guidelines

Traffic Incident Operating Guidelines (PA)

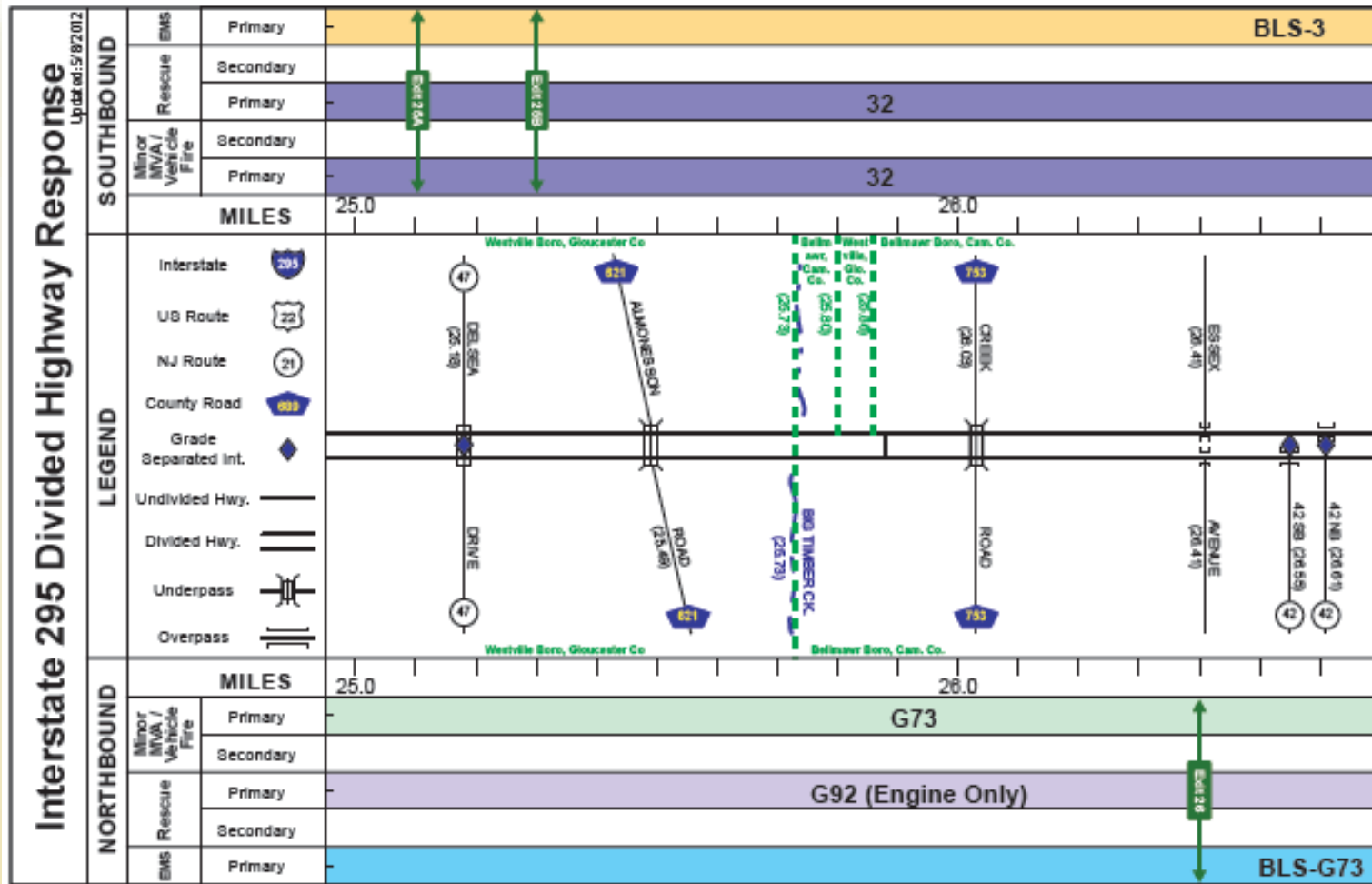
Highway Incident Traffic Safety Guidelines for Emergency Responders (NJ)

- Provide responders uniform operational guidelines for safe operations at the scene of an incident
- Document serve as a **guideline** for decision-making and can be modified by the incident responders as necessary to address existing conditions





NJSAFR IMTF Success: Response Boxes & Contracts





New Jersey State Police Incident Management Unit (IMU)

- Partnership between New Jersey State Police (NJSP) and New Jersey Department of Transportation (NJDOT) for Incident Management has existed since 1996
 - Federally funded via FHWA
 - Original NJSP unit consisted of 3 Troopers
 - Currently 7 Troopers assigned to unit
- Role of IMU





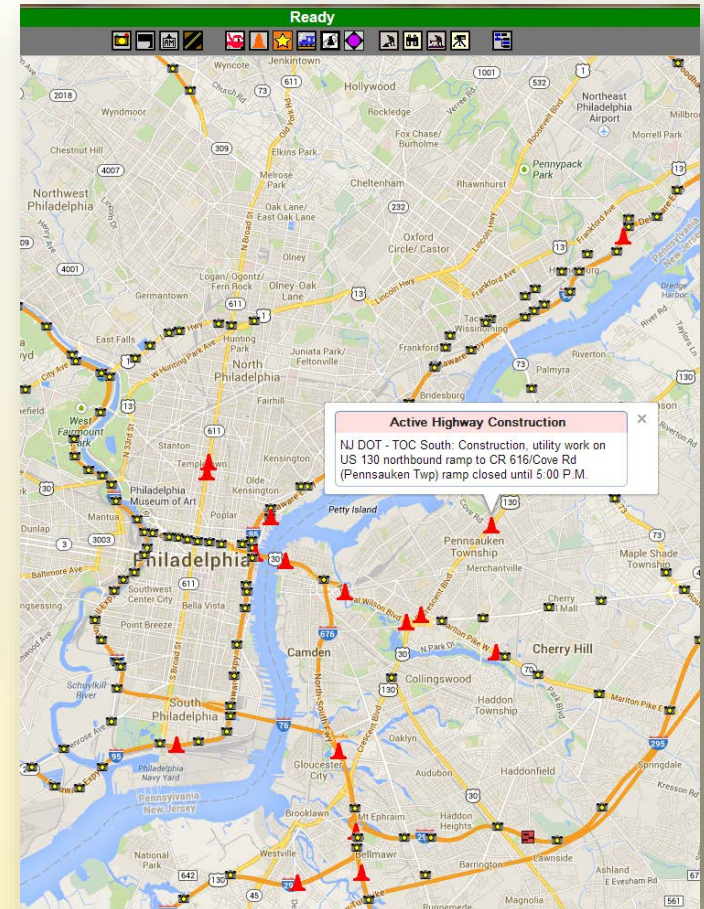
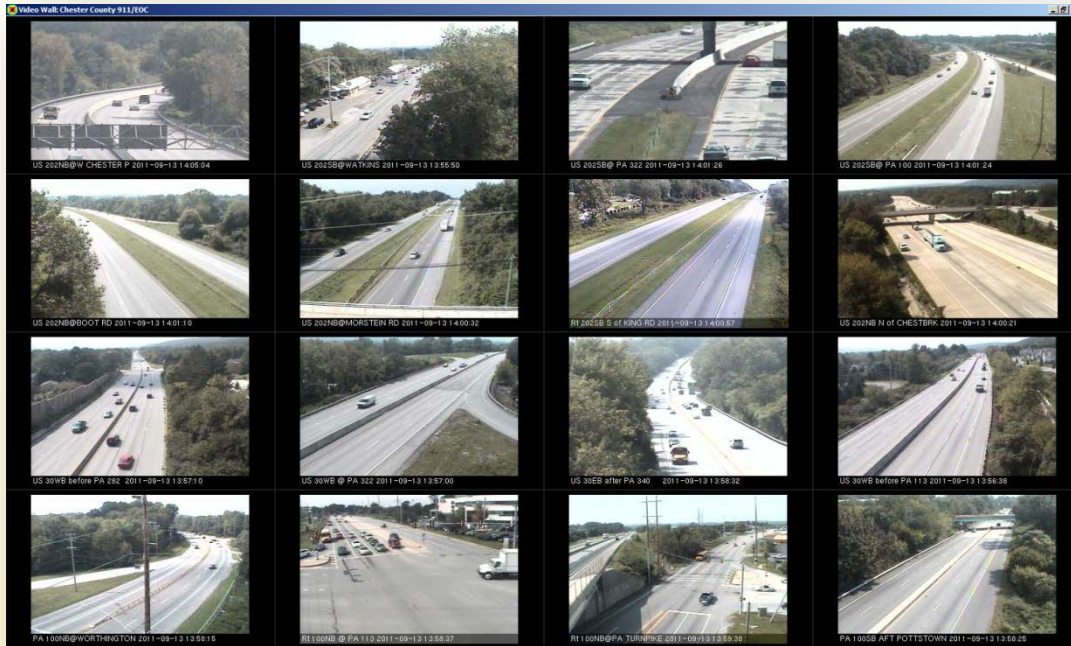
New Jersey Statewide Partnerships

- NJDOT Statewide Traffic Operations and SSP
- Incident Management Response Team
 - Partnership between NJSP and NJDOT since 1996
 - Addition of NJDFS in 2013
 - 7 Troopers and 20 NJDOT Members
- NJ Highway Incident Safety Training with NJSP, NJDFS, NJDOT





RIMIS: Regional Integrated Multimodal Information Sharing



Customized Video Walls
& Situational Map



Future Efforts

- Assist the DOT's by reaching out to local jurisdictions, river crossing agencies, and other regional stakeholders
- Make real time situational information more available to emergency responders through RIMIS
- Continue to support Statewide and National TIM Initiatives

Work as a Team to Improve Responder and Motorist Safety!



John Ward

Deputy Executive Director

215.238.2899 • jward@dvrpc.org

Laurie Matkowski

Manager, Office of Transportation Operations

215.238.2853 • lmatkowski@dvrpc.org

Christopher King

Principal Transportation Planner

IMTF Project Manager

215.238.2849 • cking@dvrpc.org

