
Metropolitan Washington Council of Governments

Serving the National Capital Region



Recycling Committee Meeting

July 16, 2015

Introducing the Baltimore Plastics Recovery Facility (PRF)

*A Regional Plastics
Recovery Partnership*



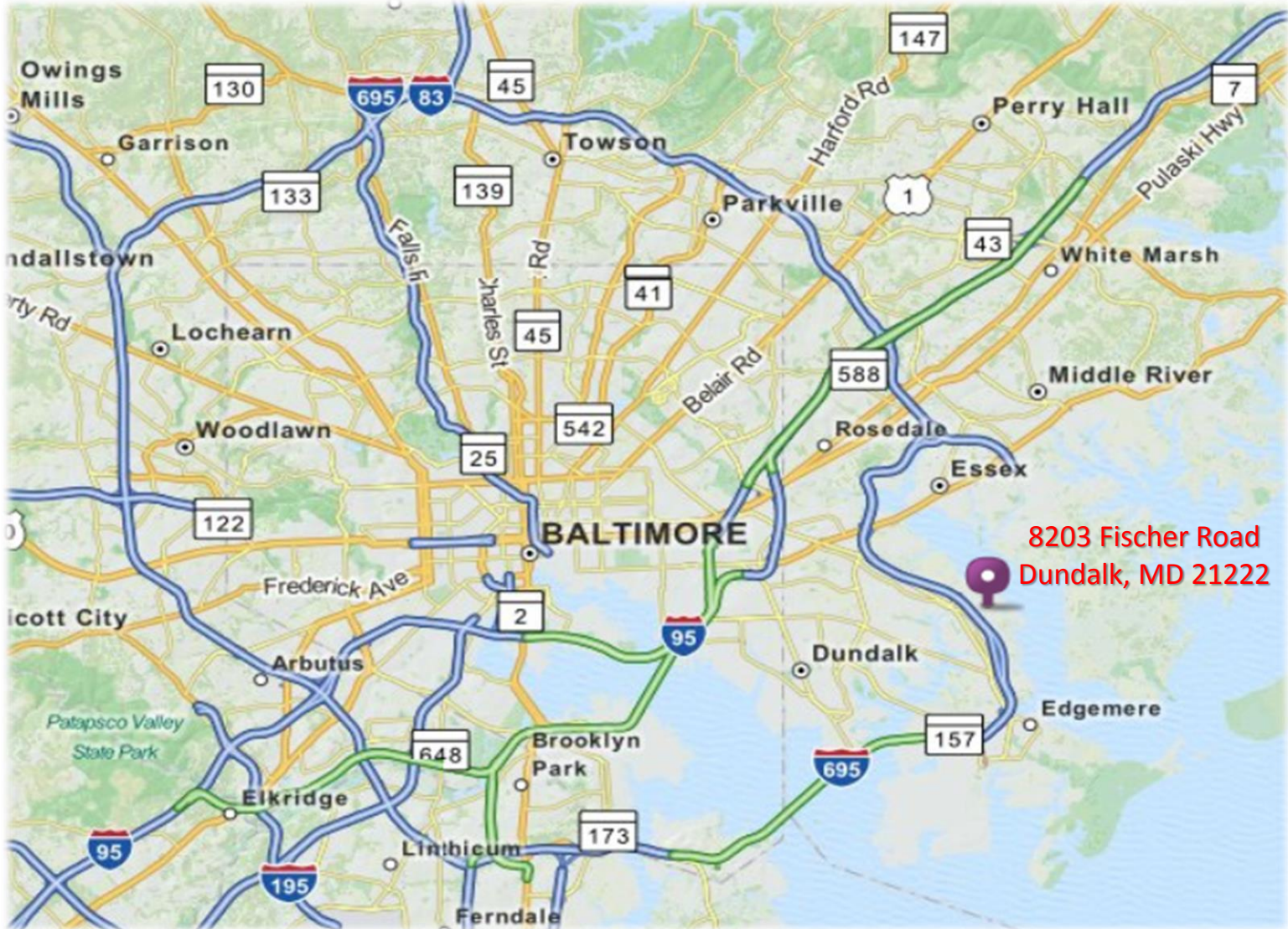
Project

- A state-of-the-art regional Plastics Recovery Facility (PRF) serving the Mid-Atlantic and Northeast recycling markets
- Process 1-7 and 3-7 post consumer plastic containers from Single Stream MRFs and Plastic Reprocessors
- \$10,500,000 capital investment in plant & equipment
- 55 full-time employees
- Over 100M lbs per year of plastics processing capacity
- Opening October 2015

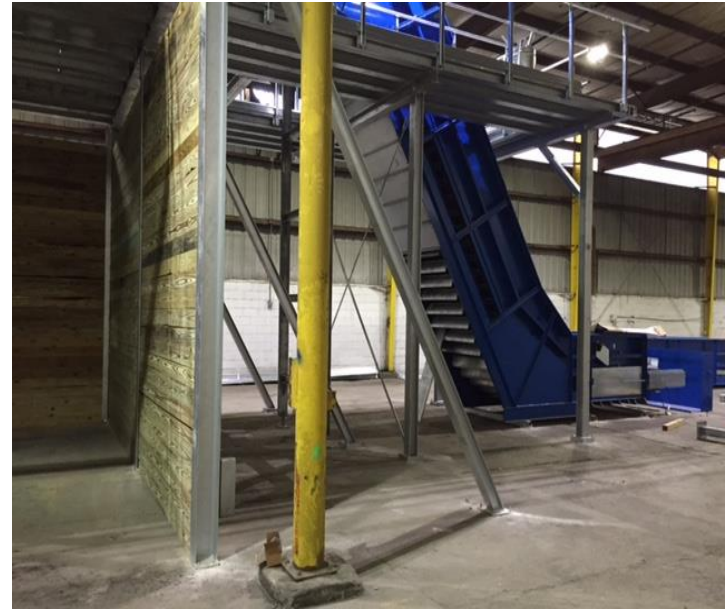
Partners

- QRS Recycling and Canusa Hershman Recycling are long time business associates with over 10 years of experience doing business with each other.
- Founded in 1974 outside of Louisville KY, QRS Recycling has grown to become one of the largest privately owned recycling companies operating throughout the Midwest and Southeast.
- Canusa Hershman has over 125 years of experience processing and trading recyclable materials since starting with a single-horse drawn cart in New Haven CT in 1887.

Location









Why the need for a PRF?

Evolving Recycling Stream



Limitations of Existing MRFs



- ❑ **Capacity & Optimization challenges**
- ❑ **Natural efficiency challenges**

1. Re-run material to recover missed containers



- ❑ Not cost effective
- ❑ Reduces processing capacity

2. Purchase additional sorting equipment



- ❑ **Additional capital costs**
- ❑ **Limited space**
- ❑ **Will still have recyclables that are not captured**

3. Outlets are limited or not attractive



- ❑ Landfill = not recycling + disposal costs
- ❑ Few domestic outlets
- ❑ Export 1-7 and 3-7 containers
 - *Unreliable, “Green fence”, etc.*

Regional Plastic Recovery Facilities (PRFs)



A full service domestic processing solution for the recycling industry

Concentrated Volumes & Focused Capital

- ✓ **Sorting**
- ✓ **Washing**
- ✓ **Grinding**



Targeting Virtually ALL Polymers



PETE



HDPE



V



LDPE



PP



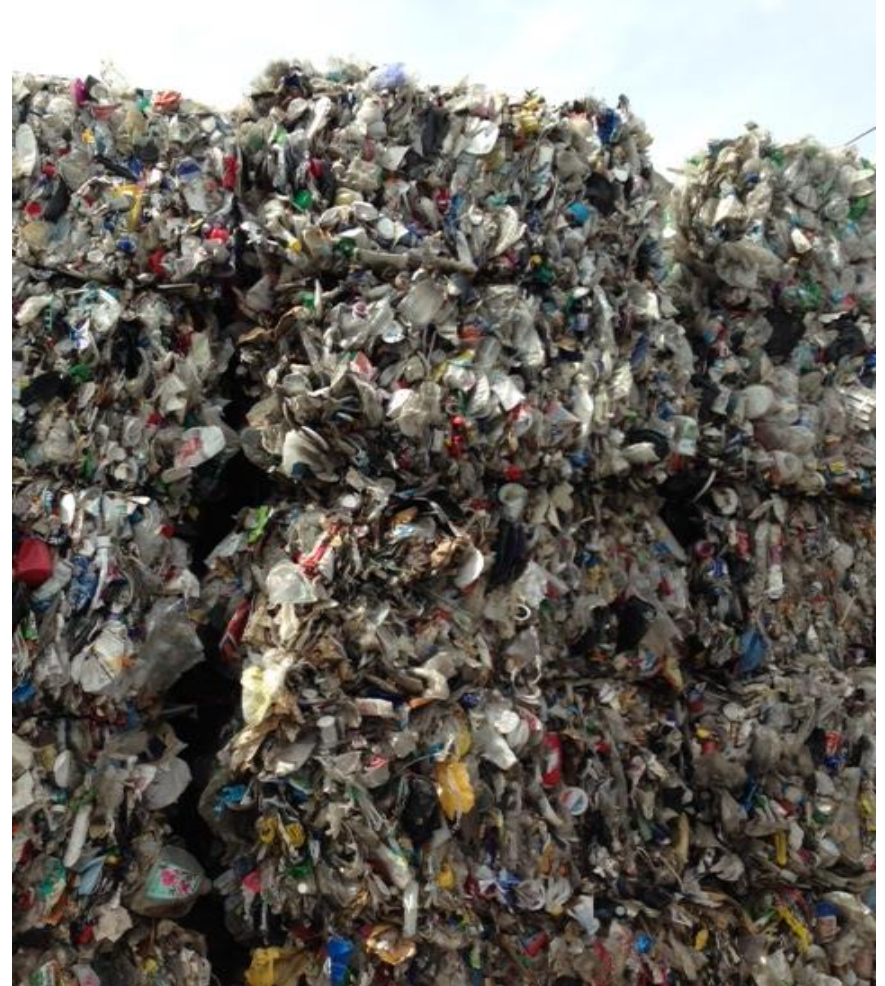
PS



PC

All 1-7 & 3-7's are NOT created equal

No two suppliers are the same



Fluid Environment

- ❑ No supplier is static – stream is constantly changing
 - Quality of inbound material
 - Quality of operational output
 - Quality and stability of management & staffing

- ❑ Constant need to know what changed

- ❑ Communication is key
 - Between PRF and suppliers
 - Within the greater recycling markets

- ❑ Tracking & Measuring is key

Tracking & Measuring

- ❑ Automatic Weight Audit – Trial Loads
 - Most accurate data captured
 - Report back to supplier actual composition

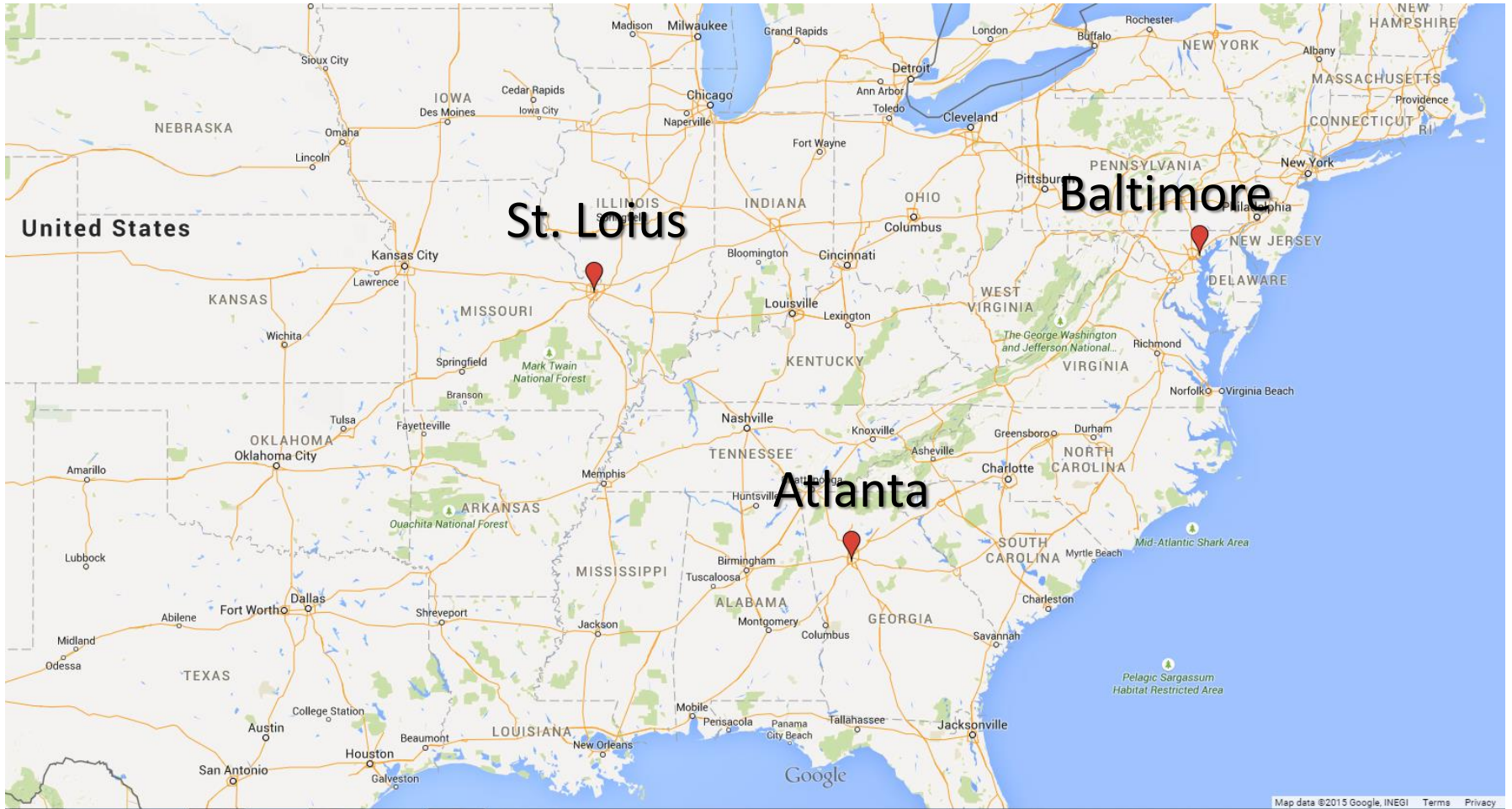
- ❑ Optical Audit – All Ongoing Loads
 - Measured by piece not weight
 - Captures and reports trends
 - Create profile of account composition

- ❑ Maintenance Audits
 - Weight to piece count calibration audits done at intervals

Dynamic Pricing

- ❑ Material Composition (i.e. the percentage of each commodity in the load)
- ❑ Commodity Markets (PET, HDPE, PP, etc.)
- ❑ Freight Costs
- ❑ Volumes

QRS System – PRF Locations



QRS System Capacity

- ❑ Atlanta 6.6 M LBS Per Month
- ❑ St. Louis 6.4 M LBS Per Month
- ❑ Baltimore 9.0 M LBS Per Month

Total 22.0 M LBS Per Month

Contacts

Jonathan Sloan

President - CHRC

(p) 410-649-3107

(e) jsloan@chrecycling.com

Tim Horchar

Market Development Manager - CHRC

(p) 410-649-3115

(e) thorchar@chrecycling.com