



Region Forward

A Comprehensive Guide
for Regional Planning and
Measuring Success in the
21st Century



Region



Forward

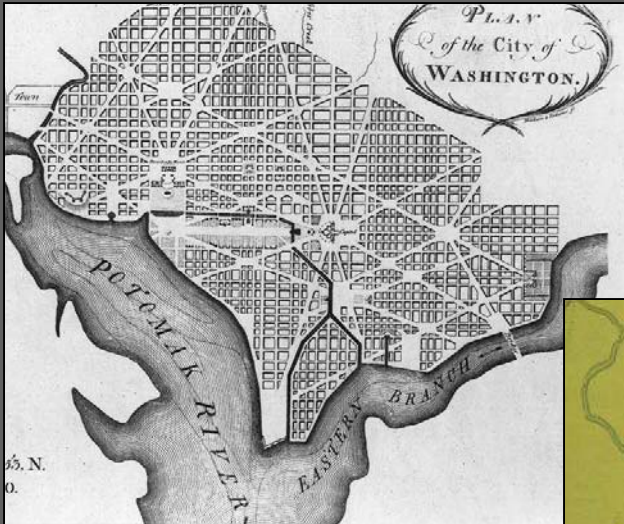
A Comprehensive Guide for Regional Planning
and Measuring Progress in the 21st Century

Prepared by the Greater Washington 2050 Coalition
Approved by the COG Board of Directors on January 13, 2010

Prepared by the Greater Washington 2050 Coalition



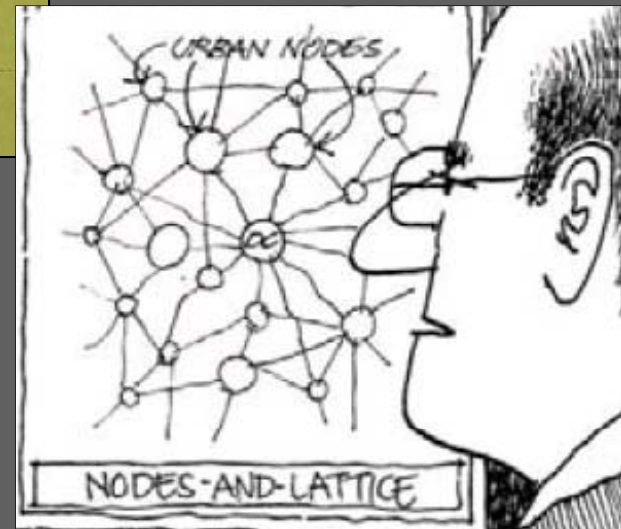
PLANNING EVOLUTION:



18th Century



20th Century



21th Century

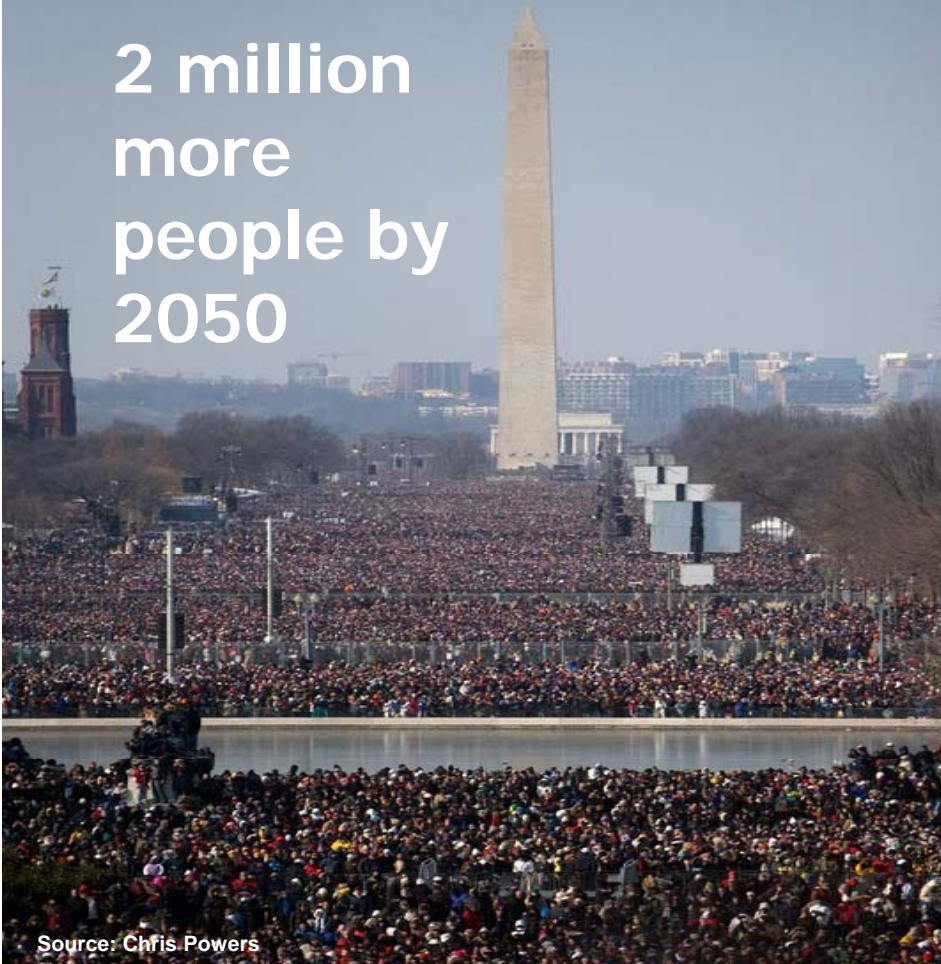


Why plan for 2050?





2 million
more
people by
2050



WARNING
CO₂

Source: Chris Powers

Private Sector Trends



Urban Land Institute: Top 3 Development Trends

1. **Mixed-Use communities**
2. **Transit-Oriented Development**
3. **Go Green**



Source: Payton Chung & CNU Image Bank



2050 SCENARIO THINKING

Strategies for any future



TENBIGMOVES

pursue transit oriented development

leverage emerging sustainable

technologies **emphasize green**

economic development develop

greater washington as a knowledge hub

strengthen regionalism use financial

innovations **ensure availability of**

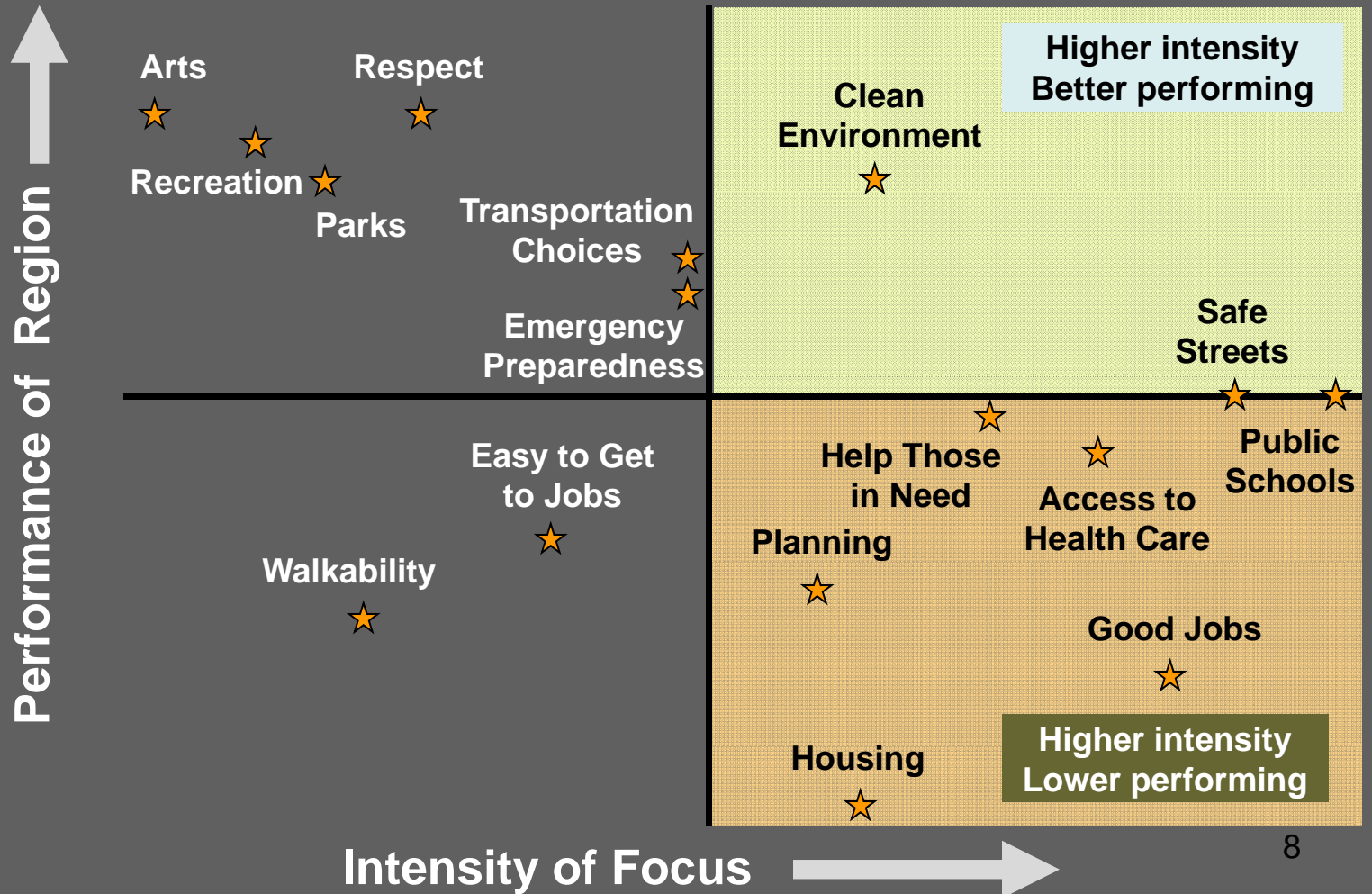
moderate and low-cost housing

focus on quality of life **improve**

public education promote health



SURVEY FEEDBACK





EXIT 1A

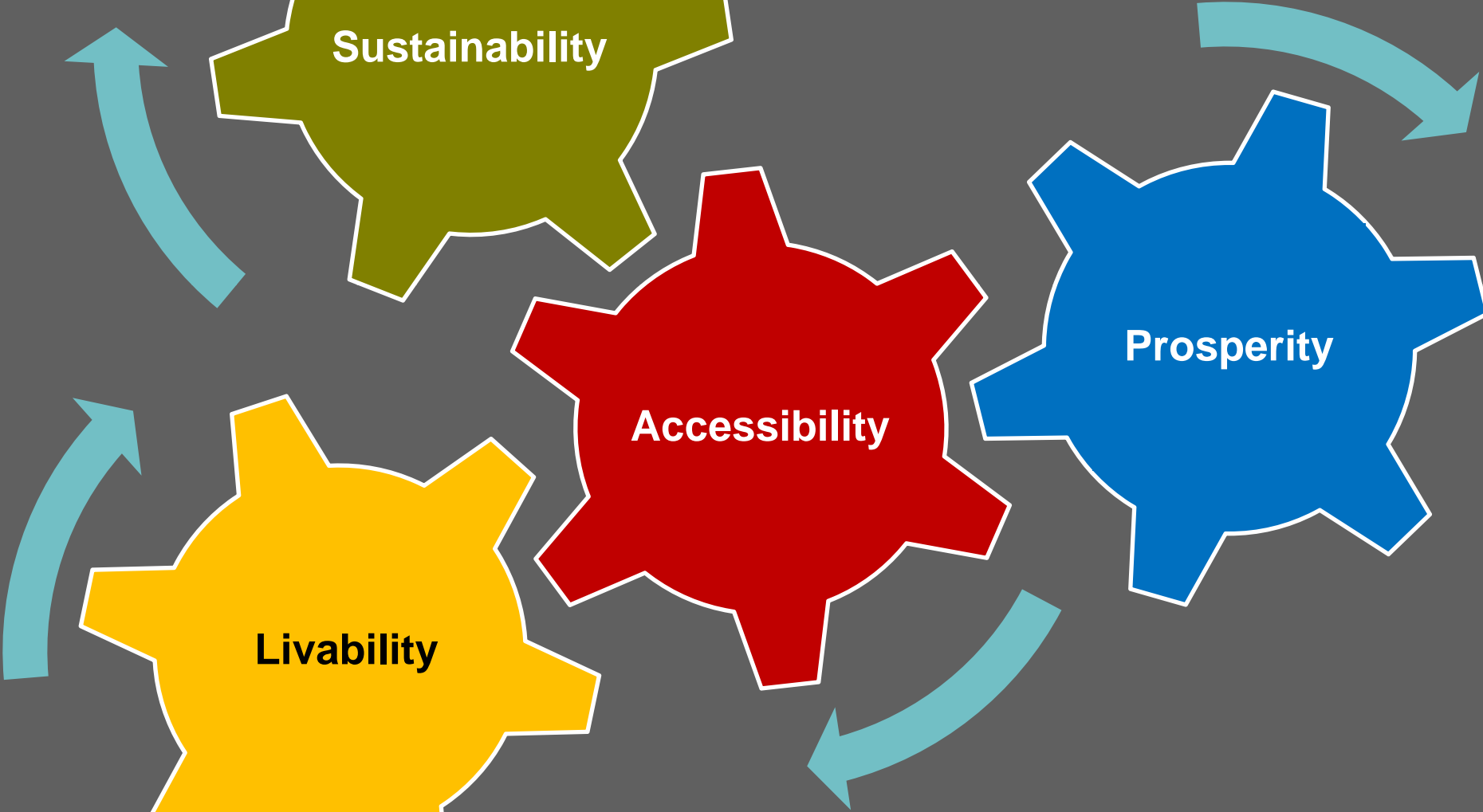
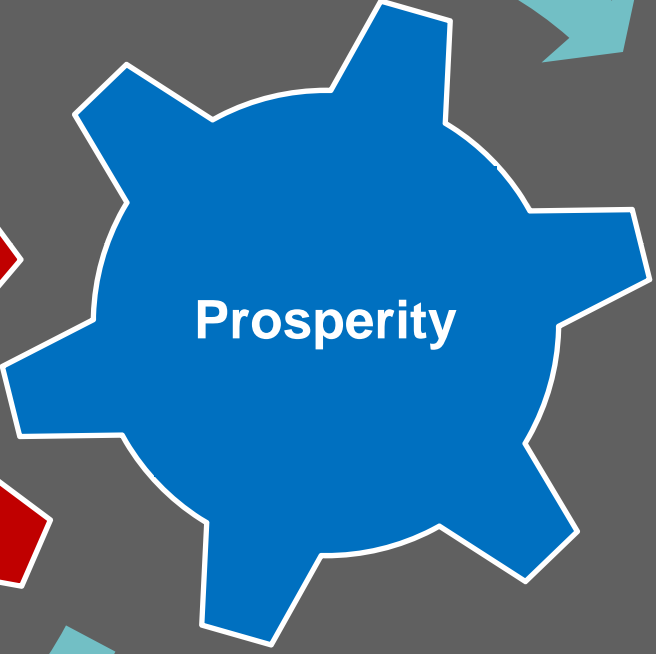
Region



Forward

A Comprehensive Guide for Regional Planning
and Measuring Progress in the 21st Century
Prepared by the Greater Washington 2050 Coalition
Approved by the COG Board of Directors on January 13, 2010

EXIT  ONLY



Region Forward



- ✓ **Goals**
- ✓ **Targets**
- ✓ **Indicators**
- ✓ **Compact**



Regional Goals:



Land Use



Transportation



Environment



Climate & Energy



Economic



Housing



Health



Education



Public Safety

TARGETS & INDICATORS



Measuring Regional Progress

— 2050

— 2020

— 2012

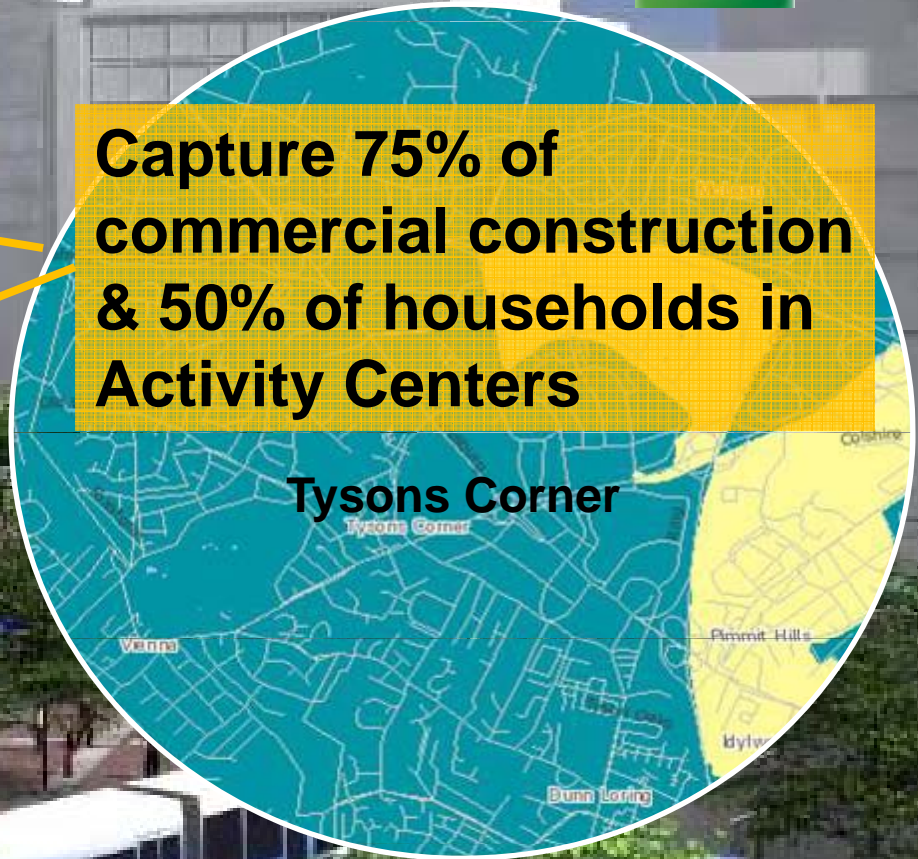


Accessibility

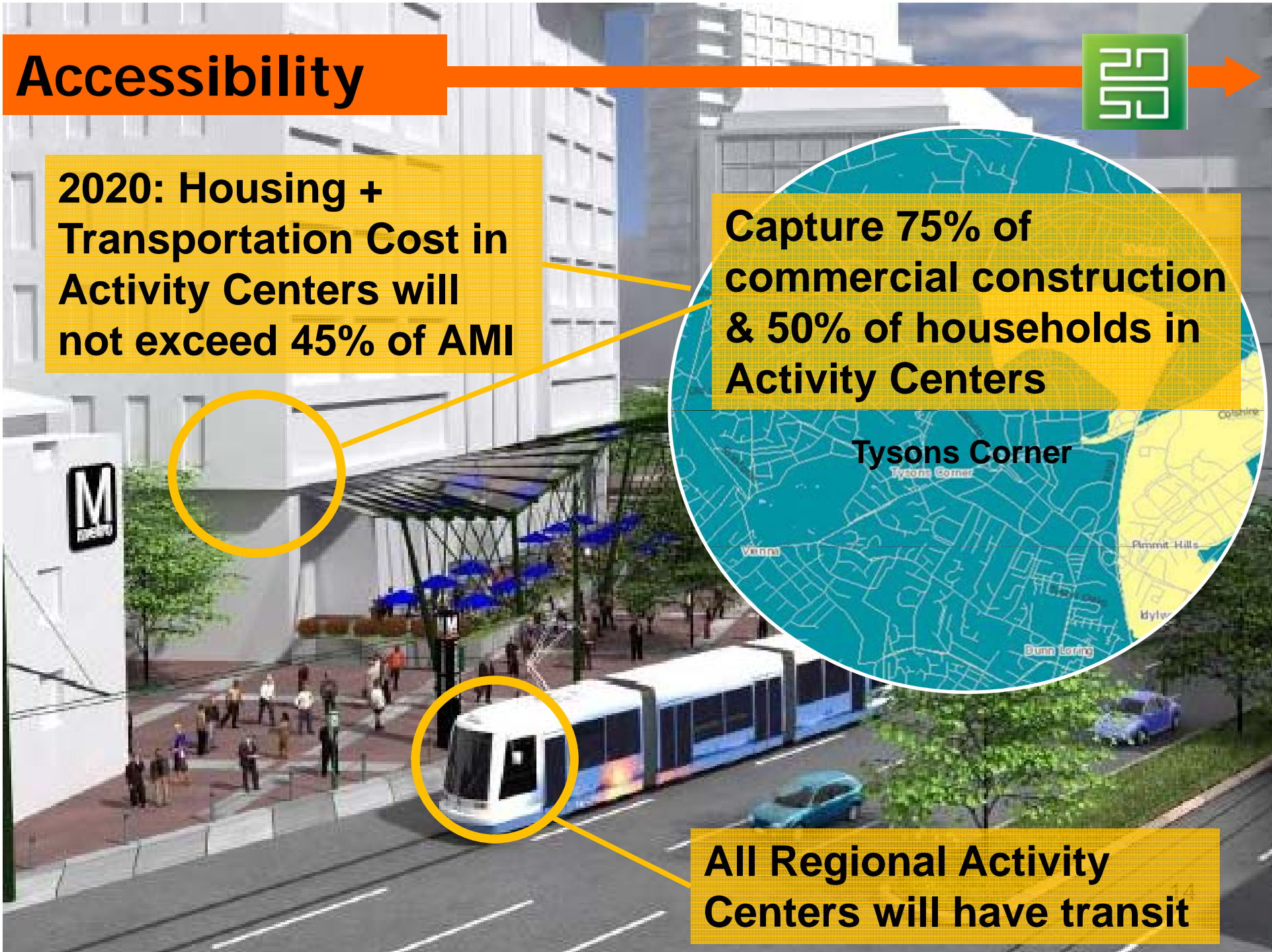


**2020: Housing +
Transportation Cost in
Activity Centers will
not exceed 45% of AMI**

**Capture 75% of
commercial construction
& 50% of households in
Activity Centers**



**All Regional Activity
Centers will have transit**



Sustainability



By 2025 achieve 100% of Chesapeake Bay Water Quality Goals

By 2020 All new residential & commercial buildings LEED Silver

2014 Regional air quality will improving beyond federal standards

Prosperity



Improve access to vocational training



Eco Tech

particulate

Ple



Median wage growth exceeds inflation

Livability



Beginning in 2012, 80% of new or preserved affordable housing units in activity centers

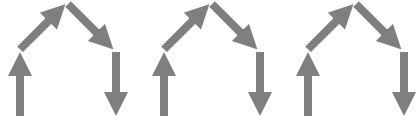
Reduce bike/ped fatalities





Compact: Voluntary
local commitment
to regional action





Sustainable Regional Planning



Equity Through Transit

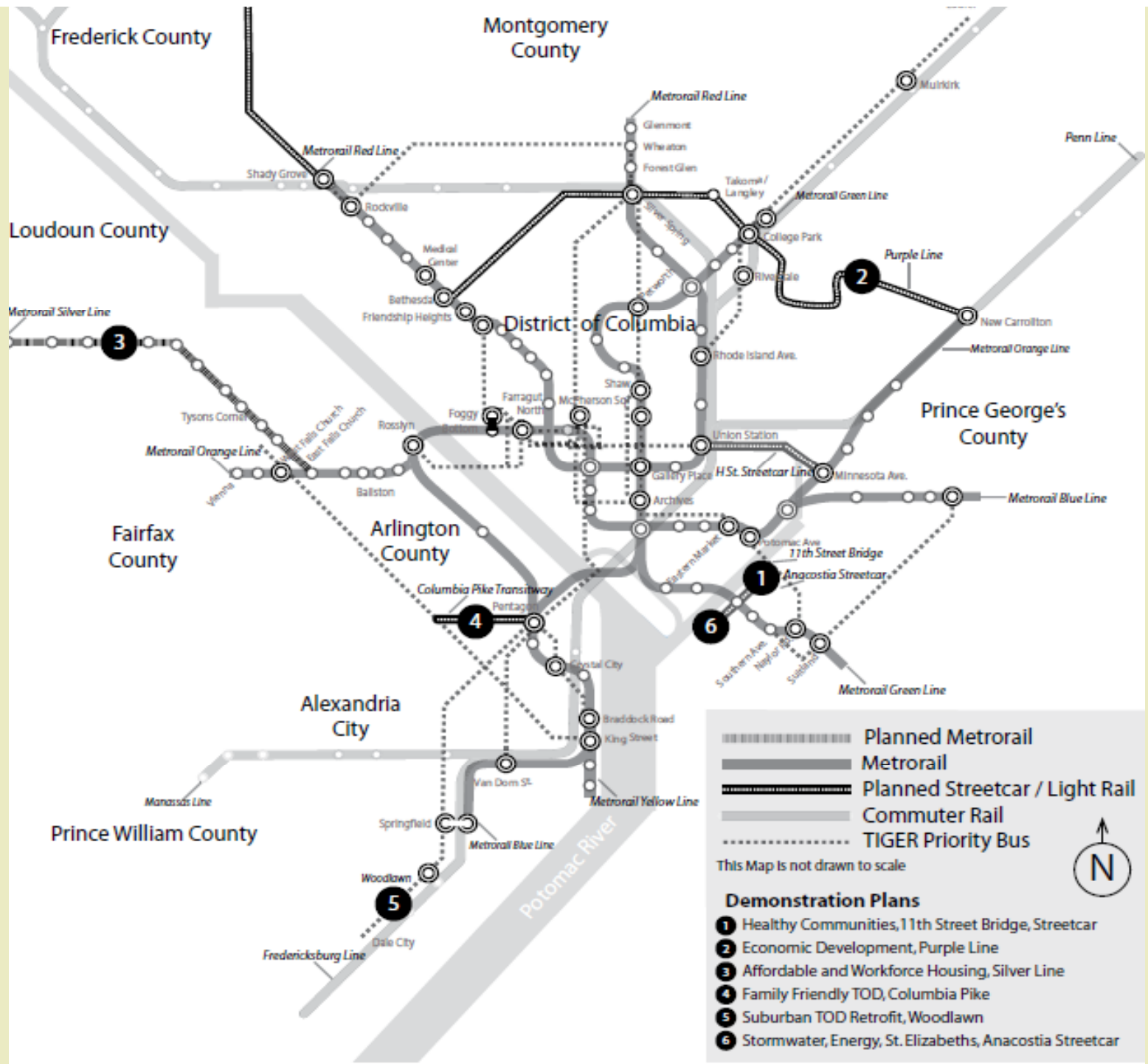
**The Region Forward Coalition's Sustainable Communities
Regional Planning Grant Application**

What's the proposal about?

Target physical and human capital investments to our transit corridors to support equitable development and livable communities.

Desired Outcomes:

- A better jobs-housing balance
- More affordable housing around transit
- Better access to jobs, housing, and services for disadvantaged residents
- Development patterns that protect the Chesapeake Bay
- Greater ability for vulnerable businesses and local governments to weather economic adversity
- Deeper public involvement in regional planning and decisions
- Better alignment of local, state, and federal investments



Montgomery County

Frederick County

Loudoun County

Metrorail Silver Line

Fairfax County

Arlington County

Alexandria City

Prince William County

District of Columbia

Prince George's County

Potomac River

Penn Line

Metrorail Red Line

Metrorail Green Line

Purple Line

Metrorail Orange Line

Metrorail Blue Line

Metrorail Green Line

Metrorail Yellow Line

Metrorail Orange Line

Metrorail Orange Line

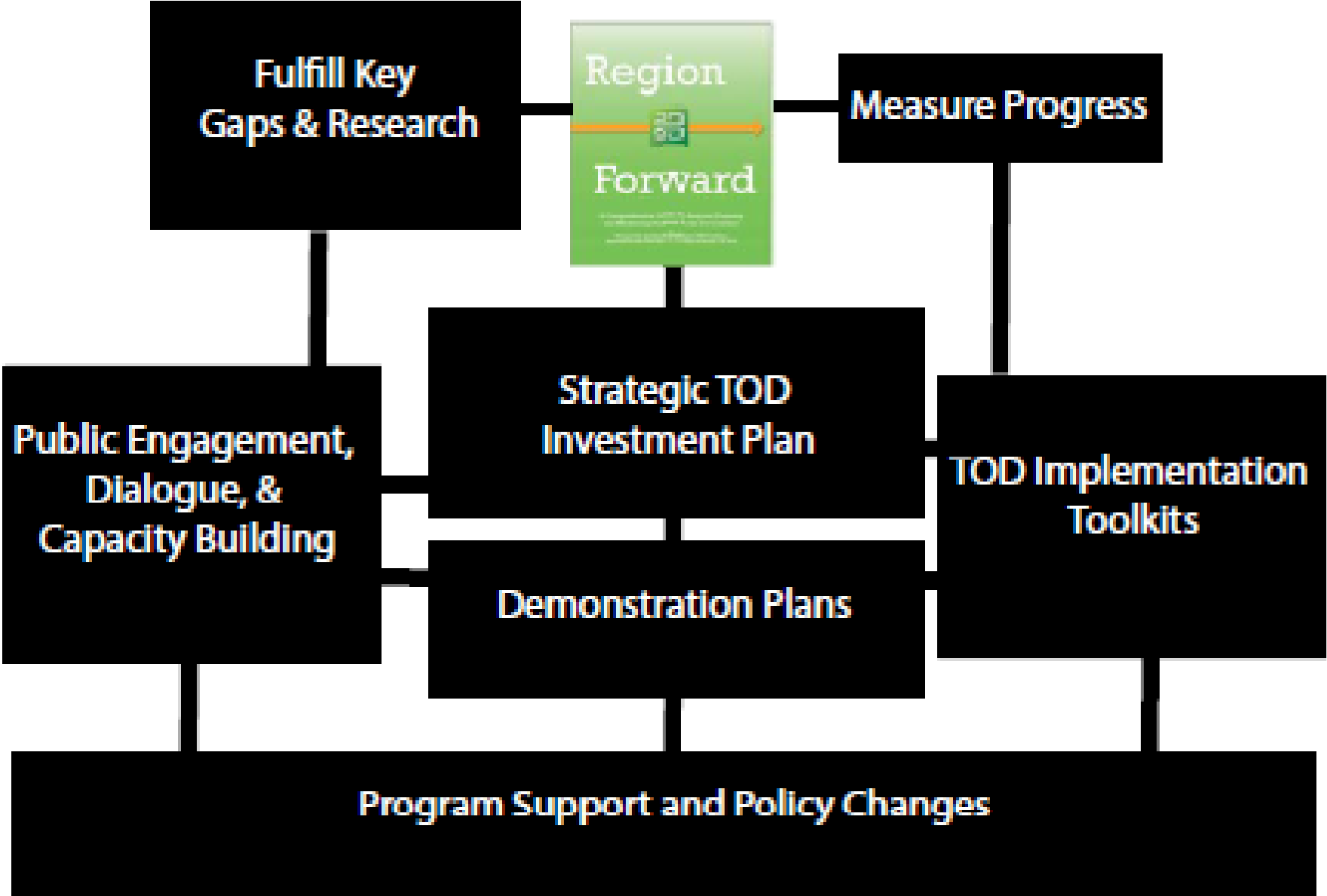
Planned Metrorail
 Metrorail
 Planned Streetcar / Light Rail
 Commuter Rail
 TIGER Priority Bus

This Map Is not drawn to scale



- Demonstration Plans**
- 1 Healthy Communities, 11th Street Bridge, Streetcar
 - 2 Economic Development, Purple Line
 - 3 Affordable and Workforce Housing, Silver Line
 - 4 Family Friendly TOD, Columbia Pike
 - 5 Suburban TOD Retrofit, Woodlawn
 - 6 Stormwater, Energy, St. Elizabeths, Anacostia Streetcar

Proposed Program



Public Engagement, Dialogue and Capacity Building

Purpose: Build Capacity, Lead Engagement, Address Equity

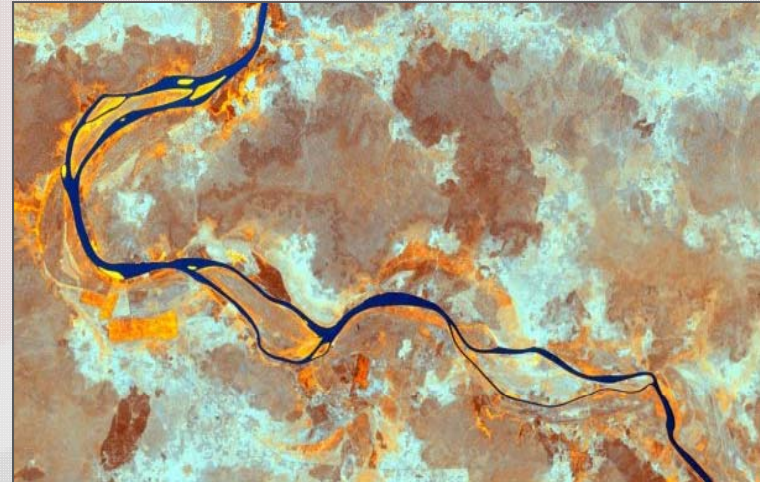
- **Finalize Equity and Engagement Team**
- **Hire Outreach Coordinator**
- **Public Participation Plan, Tools, and Resources**
- **IMPACT Leadership Training**
- **Facilitate connections to broader stakeholders**



Fulfill Plan Gaps and Conduct Research/Analysis

Purpose: Address gaps and inform planning activities

- **Housing Plan (Gap)**
- **Fair Housing Analysis (Gap)**
- **Build-out and Redevelopment Analysis**
- **Industry and Cluster Analysis**
- **CaBi Tool for the Unbanked**
- **Regional Equity and Health Analysis**
- **Additional Dataset Needs**

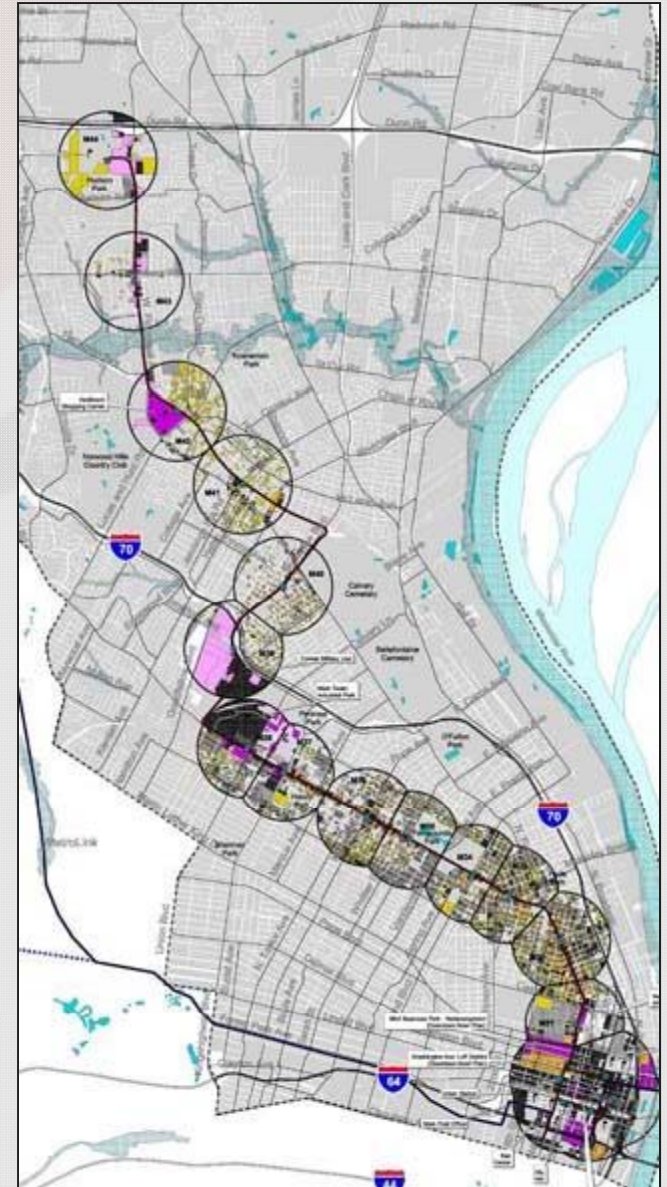


Strategic TOD Investment Plan

Purpose: prioritize short- and long-term investments in the region's transit corridors

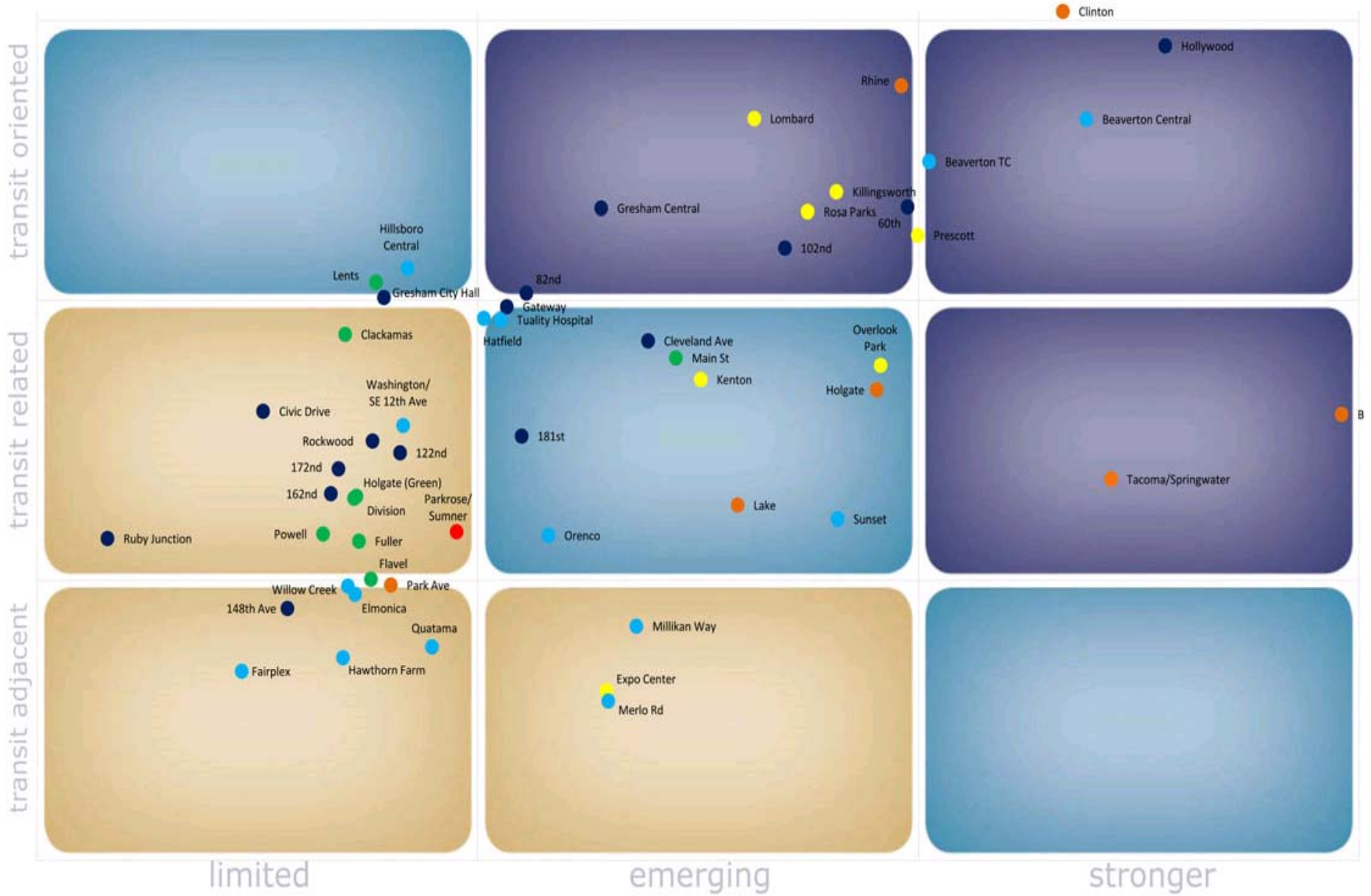
Activities:

- **Defining Complete Community Attributes for Transit Corridors**
- **TOD Typology Framework**



TOD Station Area Typology

Transit Orientation



Real Estate Market Strength

Demonstration Plans

Focus: New or Underutilized Transit Stations and Corridors

Purpose:

- 1) Address how our regional sustainability and equity goals can be achieved in different community types in tandem with new transit investments.**
- 2) Build capacity among local groups to utilize the STIP**



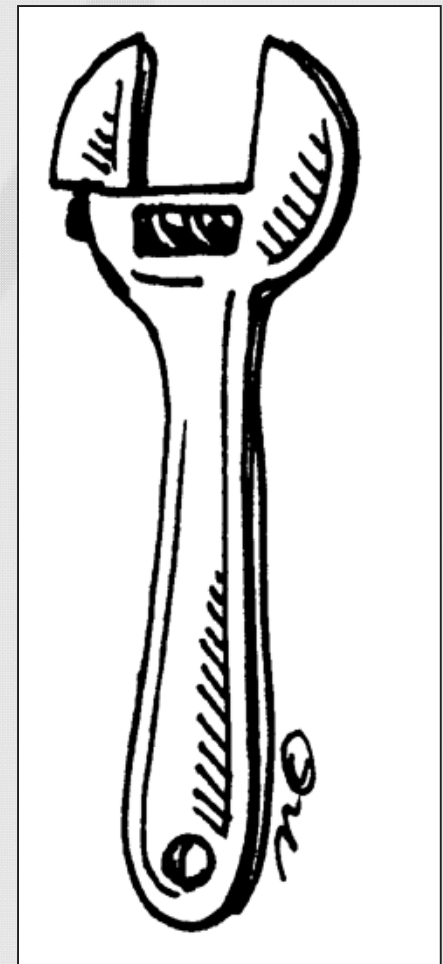
Demonstration Plans

1. **Anacostia Streetcar** – Healthy Communities, 11th St. Bridge Design
2. **Purple Line** – Business Stabilization
3. **Silver Line** – Affordable Housing Production/Live Near Your Work
4. **Columbia Pike Streetcar** – Public Private Partnerships to support family-oriented public amenities and affordable housing
5. **Richmond Highway BRT/Light Rail** – Suburban Retrofits, Urban Design, Street grid
6. **Green Line & Future Streetcar at St. E's** – Stormwater TOD and District Energy

Toolkits: Resources, Models and Tools for Different Community Types

Purpose: Utilize the demo plans to create transferable models, tools and identify resources for different community types in the Strategic TOD Investment Plan

Note: *Toolkit topic areas are closely tied to issues addressed in the demonstration plans*



Program, Policy, and Institutional Changes

Purpose: Realign programs and change policies, regulations, and administrative practices to support targeting diverse investments and resources to transit corridors



Activities:

- **Affordable Housing:** Local Consolidated Housing Plans, GreenPATH and Live Near Your Work
- **Transportation:** Realign regional funding practices and priorities
- **Stormwater:** Inform how new MS4 permits can be successful in DC and neighboring jurisdictions

Next Steps

- Meet with Region Forward Coalition to determine a strategy for moving forward without a HUD grant
- Expect to hear back from HUD late November or early December