

How Safe Are Our Roads?

Annual Data Report on the Impact of Drunk Driving on
Road Safety in the Washington D.C. Metropolitan Region



October, 2005

Prepared by

Virginia Tech
Institute for Community Health

and

Metropolitan Washington Council of Governments

How Safe Are Our Roads?

Annual Data Report on the Impact of Drunk Driving on
Road Safety in the Washington D.C. Metropolitan Region

October, 2005

Washington Regional Alcohol Program

1420 Spring Hill Road, Suite 250
McLean, VA 22102
(703) 893-0461
www.wrap.org

Prepared by

Virginia Tech Institute for Community Health

200 Architecture Annex
Blacksburg, VA 24061
(540) 231-2451

Metropolitan Washington Council of Governments

777 North Capitol Street, NE
Washington D.C. 20002
(202) 962-3200
www.mwcog.org

TABLE OF CONTENTS

| | |
|--|-----------|
| Executive Summary | 1 |
| A National and State Perspective | 3 |
| The Washington D.C. Metropolitan Region | 5 |
| Figure 1: Map of Washington Metro Region..... | 5 |
| Methodology | 6 |
| Population Census Data | 8 |
| Table 1: Total Estimated Population by Jurisdiction, as of July 2000-2004 | 9 |
| Traffic Fatalities, Overall and Alcohol-related | 10 |
| Table 2: Alcohol-related Traffic Fatalities by Jurisdiction, 1996-2004..... | 13 |
| Table 3: Total Traffic Fatalities by Jurisdiction, 1996-2004 | 14 |
| Figure 2: Number of Alcohol-related Traffic Fatalities Over Time, By Region, 1996-2004 | 15 |
| Figure 3: Total Number of Motor Vehicle Fatalities Over Time, By Region, 1996-2004 | 15 |
| Table 4: Percentage of All Traffic Fatalities that were Alcohol-related by Jurisdiction, 1996-2004 | 16 |
| Figure 4: Percentage of Total Fatalities Due to Crashes Involving Impaired Drivers Over Time, By Region, 1996-2004 | 17 |
| Table 5A: SNAPSHOT! Motor Vehicle Fatalities in 2004 | 18 |
| Figure 5A.1: SNAPSHOT! Number of Total and Alcohol-related Motor Vehicle Fatalities, By Region, 2004 | 19 |
| Figure 5A.2: SNAPSHOT! Percentage of Fatalities: Alcohol-related and Change 2002-2004 | 19 |
| Table 5B: SNAPSHOT! Motor Vehicle Fatalities for Persons Under 21 Years of Age by Jurisdiction, 2004 | 20 |

Traffic Crashes, Overall and Alcohol-related 21

Table 6: Alcohol-related Traffic Crashes by Jurisdiction, 1996-2004..... 23

Table 7: Total Traffic Crashes by Jurisdiction, 1996-2004 24

Figure 6: Number of Alcohol-related Traffic Crashes Over Time, By Region, 1996-2004 25

Figure 7: Total Number of Motor Vehicle Crashes Over Time, By Region, 1996-2004 25

Table 8: Percentage of All Traffic Crashes that were Alcohol-related, 1996-2004..... 26

Figure 8: Percentage of Total Crashes Due to Crashes Involving Impaired Drivers Over Time, By Region, 1996-2004 26

Table 9: SNAPSHOT! Motor Vehicle Crashes in 2004 27

Figure 9A: SNAPSHOT! Number of Total and Alcohol-related Motor Vehicle Crashes, By Region, 2004..... 28

Figure 9B: SNAPSHOT! Percentage of Crashes: Alcohol-related and Change 2002-2004 28

Traffic Injuries, Overall and Alcohol-related 29

Table 10: Alcohol-related Traffic Injuries by Jurisdiction, 1999-2004 31

Table 11: Total Traffic Injuries by Jurisdiction, 1999-2004..... 32

Figure 10: Number of Alcohol-related Traffic Injuries Over Time, By Region, 1999-2004 33

Figure 11: Total Number of Motor Vehicle Injuries Over Time, By Region, 1999-2004 33

Table 12: Percentage of All Traffic Injuries that were Alcohol-related, 1999-2004 34

Figure 12: Percentage of Total Injuries Due to Crashes Involving Impaired Drivers Over Time, By Region, 1999-2004 34

Table 13: SNAPSHOT! Motor Vehicle Injuries in 2004 35

Figure 13A: SNAPSHOT! Number of Total and Alcohol-related Motor Vehicle Injuries, By Region, 2004..... 36

Figure 13B: SNAPSHOT! Percentage of Injuries: Alcohol-related and Change 2002-2004 36

Traffic Arrests, Alcohol-related 37

Table 14: Total Alcohol-related Driving Arrests by Jurisdiction, 1994-2004 39

Figure 14: Total Alcohol-related Arrests, All Ages, By Region, 1994-2004 40

Table 15: Total Alcohol-related Driving Arrests of Juveniles and Adults By Jurisdiction, 1999-2004 41

Impact on Our Youth 42

Table 16: Motor Vehicle Fatalities for Persons Under 21 Years of Age, 2002-2004..... 43

Table 17: Alcohol-related Motor Vehicle Injuries for Persons Under 21 Years of Age, 2002-2004 44

Table 18: Alcohol-related Motor Vehicle Arrests for Persons Under 21 Years of Age By Region, 2002-2004 45

Table 19A: SNAPSHOT! Motor Vehicle Fatalities for Persons Under 21 Years of Age, 2004..... 46

Table 19B: SNAPSHOT! Alcohol-related Crashes, Injuries, and Arrests for Persons Under 21 Years of Age, 2004..... 47

Summary 48

Table 20: Washington Metro Region Percentage Change in Alcohol-related Incidents by Year, 1996-2004..... 48

Figure 20: Washington Metro Region Percentage Change in Alcohol-related Incidents by Year, 1996-2004..... 48

Table 21: District of Columbia Percentage Change in Alcohol-related Incidents by Year, 1996-2004..... 49

Figure 21: District of Columbia Percentage Change in Alcohol-related Incidents by Year, 1996-2004..... 49

Table 22: Montgomery and Prince George’s Counties, Maryland, Percentage Change in Alcohol-related Incidents by Year, 1996-2003 50

Figure 22: Montgomery and Prince George’s Counties, Maryland, Percentage Change in Alcohol-related Incidents by Year, 1996-2004 50

Table 23: Northern Virginia Percentage Change in Alcohol-related Incidents by Year, 1996-2004..... 51

Figure 23: Northern Virginia Percentage Change in Alcohol-related Incidents by Year, 1996-2004..... 51

Final Comments 52

Acknowledgements..... 53

Definition of Terms 54

EXECUTIVE SUMMARY

Efforts are underway nationwide to curb alcohol-related motor vehicle crashes, injuries and fatalities. The Washington Metro Region is no exception. The Washington Regional Alcohol Program has once again commissioned *How Safe Are Our Roads?* to provide insight into the progress made in 2004. Data is presented on traffic related fatalities, crashes, and injuries.

2004 Overview

- The number of alcohol-related fatalities, crashes and injuries all decreased in the Washington Metro Region over the past year.
- The region also saw a decline in the total number of fatalities, crashes and injuries from 2003.
- The percentage of fatalities that were alcohol-related, however, continues to increase (33.7% in 2004).
- The Washington Metro Region saw a small increase in arrests for drunk driving in 2004.

2004 Traffic Fatalities

- Decreases both in total traffic fatalities (-11.7%) and in alcohol-related fatalities (-9.8%) were reported in the Washington Metro Region.
- The percentage of fatalities related to alcohol remained nearly constant (33.1% in 2003; vs. 33.7% in 2004). Nationally, the percentage of traffic fatalities that were related to alcohol impairment dropped nearly 1% from 39.9% in 2003 to 39.0% in 2004.
- The Washington Metro Region continues to experience a lower percentage of alcohol-related motor vehicle fatalities than the nation (33.7% in region; 39.0% nationally).
- The District of Columbia saw an impressive decrease in motor vehicle fatalities in 2004 (-32.8%) and in alcohol-related traffic fatalities (-67.6%).
- Although the number of total and alcohol-related fatalities decreased in Northern Virginia, the percentage of fatalities that were alcohol-related increased 7% (from 38.5% in 2003 to 45.5% in 2004). This is above the national percentage of 39%.
- Both Maryland counties in the region experienced increases in alcohol-related fatalities since 2003; in Montgomery County by 33.3% and in Prince Georges County by 42.3%. These increases are significantly higher than for the District of Columbia, the Northern Virginia region and the nation.

2004 Traffic Crashes

- The Region saw a decrease in both the total number (-7.8%) and number of alcohol-related crashes (-11.6%) in 2004.
- Compared to all crashes, the percentage of alcohol-related crashes in the Washington Metro Region has been fairly constant for the past 8 years (5.8% in 2004).
- Northern Virginia's fastest growing jurisdiction, Loudoun County, saw a significant decrease in crashes (-27.7%) as well as a smaller decrease in alcohol-related crashes (-4.1%).

2004 Traffic Injuries

- Total motor vehicle injuries in the Washington Metro Region rose 0.4%, but the number related to alcohol decreased by 20.1% since 2003.
- Since 2001, the number of alcohol-related traffic injuries in the region has increased 16%.

2004 Alcohol-Related Traffic Arrests

- Arrests for alcohol-related driving offenses increased by 0.4% in 2004 in the Washington Metro Region.
- The Maryland Region accounted for the largest increase in alcohol-related driving arrests (14.8%). Specifically, Montgomery County reported a 17.7% increase and Prince Georges County reported a 9.1% increase over 2003.

Impact on Our Youth

- In the Washington Metropolitan Region, alcohol-related fatalities represented 16.1% of all traffic fatalities for persons under the age of 21. This includes youth who were driving, passengers, and pedestrians.
- Youth under 21 were involved in 8.0% of all alcohol-related crashes and 5.3% of all alcohol-related injuries in 2004.

A NATIONAL AND STATE PERSPECTIVE

Traffic safety continues to be a concern from local jurisdictions to the national level. Alcohol-related crashes, injuries, and fatalities are so designated if at least one driver or non-occupant (pedestrian or cyclist) involved is determined to have a Blood Alcohol Concentration of 0.01 g/dl or higher. Concerted efforts at the local, state, and national levels continued to reduce the incidence of alcohol-related injuries and fatalities in 2004. Still, nearly 17,000 alcohol-related traffic fatalities and half a million injuries still occurred in 2004 alone, leaving plenty of work to be done.

Fatalities

- Motor vehicle crashes are the leading cause of death for persons between the ages of 3 and 33 years.
- More than two-thirds of child passengers ages 14 and younger who died in alcohol-related crashes during 1997–2002 were riding with a drinking driver (Shults 2004).
- Nation-wide, fatalities in alcohol-related crashes decreased for a second year in a row, declining by 2.3%
- The total number of alcohol-related fatalities fell below 17,000 for the first time in five years.
- Thirty-two (32) states (including Maryland and Virginia) and the District of Columbia showed a decline in alcohol-related fatalities in 2004 from 2003.

“Almost one person every half-hour was killed in an alcohol-related crash in 2004.”

*National Highway
Traffic Safety
Administration*

Crashes, Injuries and Arrests

Alcohol use continues to significantly impact the safety of our roads. These statistics demonstrate the continued scope of the problem:

“About three in every ten Americans will be involved in an alcohol-related crash at some time in their lives.”

*National Highway
Traffic Safety
Administration*

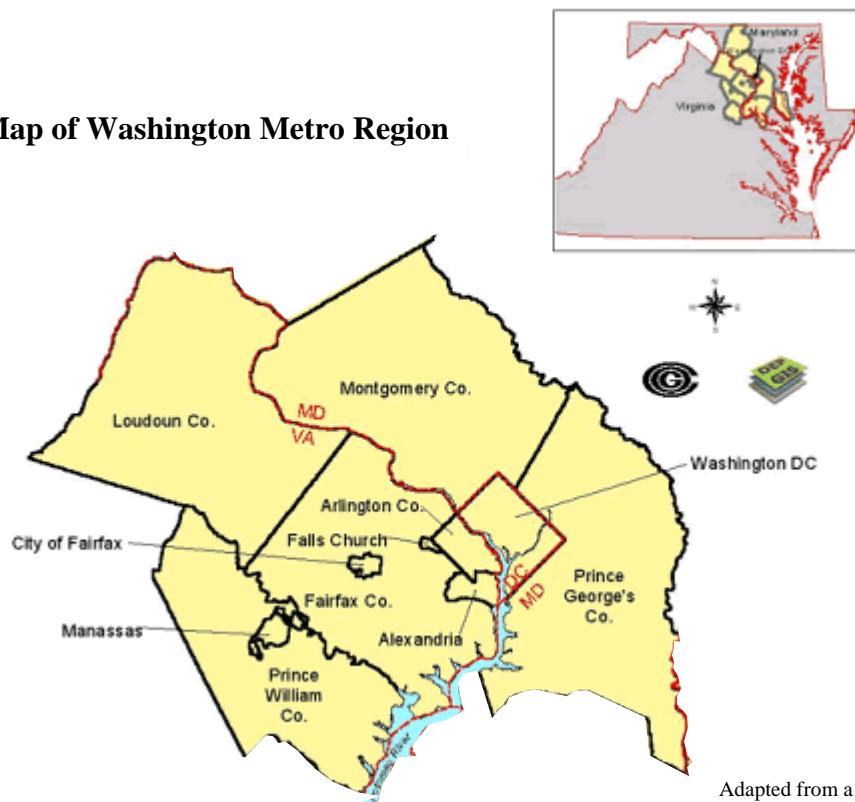
- Alcohol is a major factor in traffic crashes, and crashes involving alcohol are more likely to result in injuries and deaths than crashes where alcohol is not a factor.
- Alcohol-related motor vehicle crashes injure someone every two minutes (and kill someone every 31 minutes).
- More than 1.4 million people nationwide were arrested in 2004 for driving under the influence (Federal Bureau of Investigation’s Uniform Crime Report).
- The number of arrests is small in comparison the number of self-reported alcohol-impaired driving trips, which nationally was more than 159 million (University of Chicago).
- One-third of all DUI arrestees are repeat offenders.

THE WASHINGTON D.C. METROPOLITAN REGION

For the purposes of this report, the Washington D.C. Metropolitan Region consists of twelve jurisdictions identified in this report as the “Washington Metro Region.”

- District of Columbia
- Maryland Counties
 - o Prince George’s County
 - o Montgomery County
- Northern Virginia Counties & Cities
 - o Arlington County
 - o Fairfax County
 - o Loudoun County
 - o Prince William County
 - o City of Alexandria
 - o City of Fairfax
 - o City of Falls Church
 - o City of Manassas
 - o City of Manassas Park

Figure 1: Map of Washington Metro Region



Adapted from a map created by Metropolitan Washington Council of Governments, Washington, DC on July 14, 1999.

METHODOLOGY

Data Sources

Data compiled in this report comes from national, state and local sources. Secondary sources include the U.S. Census Bureau 2000 Census, National Highway Traffic Safety Administration (NHTSA), and Virginia Department of Transportation. Primary data was collected from the local police departments of each jurisdiction and state police agencies. Following is a listing of the agencies providing local jurisdictional data.

- District of Columbia:
 - Metropolitan Police Department
 - U.S. Park Police

- Maryland
 - State of Maryland: Maryland State Police
 - Prince George's County Police Department
 - Montgomery County Department of Police

- Virginia
 - State of Virginia: Virginia Department of Motor Vehicles, 2003 Crash Facts
 - Arlington County Police Department
 - Fairfax County Police Department
 - Loudoun County Sheriff's Office
 - Prince William County Police Department
 - City of Alexandria Police Department
 - City of Fairfax Police Department
 - City of Falls Church Police Department
 - City of Manassas Police Department
 - City of Manassas Park Police Department

Data Analysis

The findings in this report are based on data collected from organizations and agencies from across the Washington Metro Region. Data tables provide totals within the Washington Metro Region as well as individual jurisdictions. Analysis focuses on changes in motor vehicle fatalities, injuries, crashes, and arrests. Results are reported as numbers and percentage of alcohol involved incidents to total numbers across time.

Data Limitations

It is important to note limitations that affected collection and analysis of this data, as they may limit comparability across jurisdictions and influence the level of reasonable analysis. Whenever possible, limitations are noted within the tables and figures. It is important, however, that the reader keep the following in mind:

- There is no standardization for data definitions, collection, or recording within the Washington Metro Region. Each agency has its own system of data collection, coding, and management and the range and type of data collected may not be consistent across jurisdictions. The data reported and analyzed in this report reflect data as reported by contact agencies. Independent verification of data to ensure accuracy is not within the scope of this report.
- Information on data collection and management systems and changes within jurisdictions was not solicited. In addition, changes in laws or judicial priorities may result in increased attention to specific data (e.g. blood alcohol level in driver fatalities related to stricter server laws). In some cases, this may result in missing data or data that appears inconsistent when examined against the same values for previous years. It is beyond the scope of this report to identify data methodology or priority changes for each jurisdiction.
- Data on impaired driver involvement in motor vehicle fatalities, injuries, crashes and arrests was requested for alcohol-impairment only. Therefore, data are assumed to reflect only alcohol impairment and is reported in this way.
- The number of incidents, total and related to alcohol impairment, is very small for some jurisdictions. Due to the small numbers, jurisdictional analysis might easily misrepresent the problem. For example, an increase of one alcohol-related fatality would have little impact in a jurisdiction that saw 50 alcohol-related fatalities the previous year, but would appear to represent a significant change in a small jurisdiction with only one or two alcohol-related fatalities the previous year.
- Data on people under the age of 21 years is collected in an inconsistent manner among jurisdictions. Caution must be used in evaluation of this data due to varied definitions and missing data.
- Data are reported and analyzed by absolute numbers only. At this time, information that would allow identification of comparable rates is unavailable. It is assumed that people involved in motor vehicle crashes and arrests may live within or outside the Washington Metro Region. Collection of data on driver or passenger residence versus jurisdiction of accident is beyond the scope of this report. Calculating rates based on the Washington Metro Region's population or number of licensed drivers would not accurately represent the problem since drivers may be from outside the jurisdiction.
- Many charts display two regional total numbers. The first, "DC Regional Total" is the total of the District of Columbia, the Maryland Region and the Northern Virginia Region. The second regional number, "Regional Total Adjusted" includes data from the United States Park Police. Because the Park Police information has only been recently collected, it is shown separately and the two regional totals are shown so that comparisons with previous years can be done.

POPULATION CENSUS DATA

Population data was obtained from the U.S. Census Bureau Population Division. Jurisdictional population figures are provided as of July 1 of each year reported.

The Washington Metro Region's population rose by just over half a percent (0.6%) over the past year. The State of Maryland's population trend showed a similar increase of 0.4% while the State of Virginia's increase of 1.6% was higher than the national average of 1.0%. The local jurisdiction with the largest increase in population was once again Loudoun County, VA (7.9%) compared to a 1/6% increase for Northern Virginia as a whole. The District of Columbia continued to see a decrease in population (-2.0%) over the past year.

The impact of changing population on motor vehicle crashes and arrests is not clear from the data obtained for this report. While residential population is decreasing slightly in the central area, the location of employers and social venues continues to drive daily commutes. Growth of employment in the suburban regions, opening of suburban shopping and eating venues, and expansion of commuter options via bus or rail may significantly impact the movement of people in the region. Evaluation of the impact of these components on regional volume of motor vehicle traffic is beyond the scope of this report.

Table 1: Total Estimated Population by Jurisdiction, 2000-2004

| | 2000 | 2001 | 2002 | 2003 | 2004 | Percent Change in Population 2003- 2004 | Percent Change in Population 2000- 2004 |
|--|--------------------|--------------------|--------------------|--------------------|--------------------|---|---|
| District of Columbia | 571,437 | 572,716 | 569,157 | 563,384 | 553,523 | -2% | -3.1% |
| Maryland | | | | | | | |
| <i>State Total</i> | 5,311,531 | 5,383,377 | 5,450,525 | 5,508,909 | 5,558,058 | 0.9% | 4.6% |
| Montgomery County | 877,781 | 894,449 | 908,831 | 918,881 | 921,690 | 0.3% | 5.0% |
| Prince George's County | 803,649 | 818,119 | 829,372 | 838,716 | 842,967 | 0.5% | 4.9% |
| MD Regional Total | 1,681,430 | 1,712,568 | 1,738,203 | 1,757,597 | 1,764,657 | 0.4% | 4.9% |
| Virginia | | | | | | | |
| <i>State Total</i> | 7,104,033 | 7,185,522 | 7,273,572 | 7,365,284 | 7,459,827 | 1.3% | 5.0% |
| Arlington County | 189,323 | 189,661 | 189,090 | 187,873 | 186,117 | -0.9% | -1.7% |
| Fairfax County | 975,304 | 987,030 | 994,121 | 1,000,405 | 1,003,157 | 0.3% | 2.9% |
| Loudoun County | 173,940 | 190,134 | 204,042 | 221,746 | 239,156 | 7.9% | 37.5% |
| Prince William County | 283,837 | 298,135 | 311,630 | 325,324 | 336,586 | 3.5% | 18.6% |
| City of Alexandria | 127,147 | 130,403 | 129,938 | 128,923 | 128,206 | -0.6% | 0.8% |
| City of Fairfax | 21,581 | 21,853 | 21,905 | 22,031 | 22,062 | 0.1% | 2.2% |
| City of Falls Church | 10,439 | 10,561 | 10,602 | 10,485 | 10,781 | 2.8% | 3.3% |
| City of Manassas | 35,392 | 35,887 | 36,726 | 37,166 | 37,615 | 1.2% | 6.3% |
| City of Manassas Park | 10,333 | 10,757 | 10,924 | 10,990 | 11,519 | 4.8% | 11.5% |
| Northern Virginia | 1,827,296 | 1,874,421 | 1,908,978 | 1,944,943 | 1,975,199 | 1.6% | 8.1% |
| Washington Metro Regional Total | 4,080,163 | 4,159,705 | 4,216,338 | 4,265,924 | 4,293,379 | 0.6% | 5.2% |
| National | 282,192,162 | 185,102,075 | 287,941,220 | 290,788,976 | 293,655,404 | 1.0% | 4.1% |

Data Source: Annual Estimates of the population, Population Division, U.S. Census Bureau.

TRAFFIC FATALITIES

National Comparison

Nationwide the total number of traffic fatalities decreased slightly over the past year. The better news is that the percentage of fatalities in alcohol-related crashes saw an even larger national decrease. Despite a 1% increase in the nation's population, three hundred and eighty five fewer people died in 2004 from alcohol-related crashes than in 2003. Specifically, alcohol-related fatalities decreased 2.3% while all traffic fatalities decreased 0.8% in 2004 compared with 2003.

Nationally, the percentage of traffic fatalities that related to alcohol impairment dropped nearly 1% from 39.9% in 2003 to 39.0% in 2004. While these numbers may seem small, they represent movement in the right direction.

State Comparisons

Maryland

The state of Maryland saw a small decrease in overall traffic fatalities from 2003 to 2004, but an increase in alcohol-related fatalities in the state. Maryland's increase in the percentage of alcohol-related fatalities (2.8%) since last year is in opposition to the national trend (-2.3%). Maryland saw the percentage of motor vehicle fatalities reported to be alcohol-related increase from 43.3% in 2003 to 44.9% in 2004, which is above the national average of 39%.

Virginia

The Commonwealth of Virginia saw a decrease in total traffic fatalities in 2004, dropping over 2.4% from last year. Fatalities related to alcohol also decreased by 5.3%, which was significantly better than the nation as a whole (-2.3%). The percentage of fatalities that were alcohol-related decreased from 38.3% in 2003 to 37.2% in 2004. This is below the national percentage of 39%.

Washington Metro Region

Despite some gains in selected areas of the region, the use of alcohol continues to be a significant factor in motor vehicle crash fatalities. On the bright side, the Washington Metro Region saw noteworthy decreases in motor vehicle accident fatalities, both overall and related to alcohol in 2004.

The percentage of traffic fatalities in the Washington Metro Region related to alcohol continues to rise.

Despite these gains, the Washington Metro Region had an increased percentage of motor vehicle fatalities related to alcohol in the past year. In 2003, 33.1% of traffic fatalities were related to alcohol; in 2004 it was to 33.7%.

Alcohol-related fatalities have increased 6.8% since 1996 in the Washington Metro Region. Total motor vehicle fatalities increased 3.5% during that same seven year period. The percentage of traffic fatalities related to alcohol has increased even more significantly in the past five years. In 1998, there were 307 deaths with 78 related to alcohol use (25.4%). In 2004, there were 326 fatalities, 110 related to alcohol use (33.7%).

Regional Jurisdictions

District of Columbia

The District of Columbia saw an impressive decrease in motor vehicle fatalities in 2004 (-32.8%) and in alcohol-related traffic fatalities (-67.6%). These decreases are from an unusually high percentage in 2003, and it should be noted that over the past few years the District has changed its assessment of driver fatalities at the scene. The impact of this change on identification of alcohol-related crashes is unknown.

Alcohol-related traffic fatalities in the District of Columbia dropped to 67.6% in 2004.

In the District of Columbia, the number of alcohol-related traffic fatalities decreased from 34 in 2003 to just 11 in 2004. 24.4% of all traffic fatalities were related to alcohol use in 2004 compared with 50.7% last year. Since 1996, alcohol-related fatalities have increased 37.5%, while total traffic fatalities have decreased (-30.8%) over the same period.

Montgomery and Prince George's Counties, Maryland

Total traffic fatalities in 2004 increased in Montgomery County by 18% while Prince George's County saw a decrease of 0.8%. Both Maryland counties in the region experienced increases in alcohol-related fatalities over 2003; in Montgomery County by 33.3% and in Prince Georges County by 42.3%. These increases are higher than for the District of Columbia, Northern Virginia region and the nation. In Montgomery and Prince George's Counties, one in every four fatalities were alcohol-related in 2004.

The increase in the percentage of alcohol-related fatalities in Montgomery & Prince George's Counties is in opposition to the national trend.

The Maryland counties saw an increase in overall traffic fatalities from 2003 to 2004, as well as a significant increase in alcohol-related fatalities in the state (39.5%). The two counties in the Maryland region saw the percentage of motor vehicle fatalities reported to be alcohol-related increase from 22.1% in 2003 to 29.4% in 2004. This is in opposition to the national trend of decreasing percentages of fatalities related to alcohol.

Northern Virginia

Northern Virginia saw a significant decrease in total traffic fatalities in 2004, dropping over 22% from last year. Fatalities related to alcohol also decreased by 8%, which was significantly better than the nation as a whole (-2.3%). However, the percentage of fatalities that were alcohol-related increased 7% (from 38.5% in 2003 to 45.5% in 2004). Northern Virginia's 45% is above the national percentage of alcohol-related fatalities (39%).

Within Northern Virginia, both Loudoun County and Prince William County saw significant decreases in total traffic fatalities (-54.2% and -37.5% respectively).

Table 2: Alcohol Related Traffic Fatalities by Jurisdiction, 1996-2004

| | | | | | | | | | | Percent Change | |
|--|-------------|-----------|-----------|-----------|-----------|------------|------------|------------|------------|----------------|------------------------|
| | 1996 | 1997 | 1998 | 1999 | 2000 | 2001 | 2002 | 2003 | 2004 | 2003-2004 | 1996-2004 [^] |
| | | | | | | | | | | | |
| District of Columbia | 8 | 10 | 16 | 14 | 9 | 14 | 9 | 34 | 11 | -67.6% | 37.5% |
| Maryland | | | | | | | | | | | |
| <i>State Total</i> | - | - | - | - | - | - | 276 | 281 | 289 | 2.8% | - |
| Montgomery County | 7 | 17 | 8 | 12 | 13 | 18 | 11 | 12 | 16 | 33.3% | 128.6% |
| Prince George's County | 50 | 29 | 26 | 25 | 27 | 28 | 35 | 26 | 37 | 42.3% | -26.0% |
| MD Regional Total | 57 | 46 | 34 | 37 | 40 | 46 | 46 | 38 | 53 | 39.5% | -7.0% |
| Virginia | | | | | | | | | | | |
| State Total | - | - | - | - | - | - | 379 | 361 | 342 | -5.3% | - |
| Arlington County | 3 | 5 | 1 | 2 | 9 | 5 | 7 | 2 | 1 | -50.0% | -66.7% |
| Fairfax County | 16 | 17 | 13 | 20 | 23 | 18 | 25 | 29 | 26 | -10.3% | 62.5% |
| Loudoun County | 7 | 5 | 7 | 1 | 2 | 4 | 9 | 9 | 8 | -11.1% | 14.3% |
| Prince William County | 9 | 10 | 5 | 7 | 9 | 16 | 10 | 8 | 10 | 25.0% | 11.1% |
| City of Alexandria | 1 | 0 | 2 | 1 | 2 | 3 | 2 | 0 | 1 | 100.0% | 0.0% |
| City of Fairfax | 1 | 0 | 0 | 0 | 0 | 0 | 0 | 2 | 0 | -100.0% | -100.0% |
| City of Falls Church | 1 | 0 | 0 | 0 | 0 | 0 | 0 | 0 | 0 | 0.0% | -100.0% |
| City of Manassas | | 0 | 0 | 0 | 1 | 0 | 0 | 0 | 0 | 0.0% | - |
| City of Manassas Park | | 0 | 0 | 0 | 0 | 0 | 0 | 0 | 0 | 0.0% | - |
| Northern Virginia Total | 38* | 37 | 28 | 31 | 46 | 46 | 53 | 50 | 46 | -8.0% | 21.1% |
| Washington Metro Regional Total | 103* | 93 | 78 | 82 | 95 | 106 | 108 | 122 | 110 | -9.8% | 6.8% |
| National Parks in Region | -- | -- | -- | -- | -- | -- | 8 | -- | 0 | -- | -- |
| Regional Total Adjusted | -- | -- | -- | -- | -- | -- | 116 | -- | 110 | -- | -- |
| National | - | - | - | - | - | - | 17,524 | 17,013 | 16,628 | -2.3% | -- |

[^]Percent change not calculated for all jurisdictions due to missing data elements.

*Data for cities of Manassas and Manassas Park not included in regional totals.

Source for National and state data: National Highway Traffic Safety Administration, U.S. Department of Transportation

Source for local data: Jurisdictional contacts, see specific contact in Methodology

Table 3: Total Traffic Fatalities by Jurisdiction, 1996-2004

| | 1996 | 1997 | 1998 | 1999 | 2000 | 2001 | 2002 | 2003 | 2004 | Percent Change | |
|---|-------------|------------|------------|------------|------------|------------|------------|------------|------------|-----------------------------|--------------|
| | | | | | | | | | | 2003-2004 | 1996-2004^ |
| | | | | | | | | | | District of Columbia | 65 |
| Maryland | | | | | | | | | | | |
| <i>State Total</i> | - | - | - | - | - | - | 661 | 649 | 643 | -0.9% | - |
| Montgomery County | 49 | 55 | 46 | 49 | 58 | 59 | 71 | 50 | 59 | 18.0% | 20.4% |
| Prince George's County | 112 | 85 | 111 | 79 | 91 | 128 | 141 | 122 | 121 | -0.8% | 8.0% |
| MD Regional Total | 161 | 140 | 157 | 128 | 149 | 187 | 212 | 172 | 180 | 4.7% | 11.8% |
| Virginia | | | | | | | | | | | |
| <i>State Total</i> | - | - | - | - | - | - | 914 | 942 | 919 | -2.4% | - |
| Arlington County | 10 | 7 | 3 | 8 | 14 | 9 | 12 | 7 | 3 | -57.1% | -70.0% |
| Fairfax County | 42 | 59 | 45 | 49 | 70 | 53 | 64 | 62 | 64 | 3.2% | 52.4% |
| Loudoun County | 17 | 13 | 21 | 11 | 9 | 15 | 16 | 24 | 11 | -54.2% | -35.3% |
| Prince William County | 14 | 32 | 19 | 24 | 27 | 31 | 23 | 32 | 20 | -37.5% | 42.9% |
| City of Alexandria | 2 | 2 | 3 | 4 | 5 | 5 | 6 | 2 | 3 | 50.0% | 50.0% |
| City of Fairfax | 2 | 1 | 0 | 0 | 0 | 1 | 1 | 2 | 0 | -100.0% | -100.0% |
| City of Falls Church | 2 | 0 | 0 | 0 | 0 | 1 | 1 | 0 | 0 | 0.0% | -100.0% |
| City of Manassas | - | 0 | 0 | 1 | 1 | 2 | 1 | 1 | 0 | -100.0% | - |
| City of Manassas Park | - | 0 | 0 | 1 | 0 | 0 | 0 | 0 | 0 | 0.0% | - |
| Northern Virginia Total^ | 89* | 114 | 91 | 98 | 126 | 117 | 124 | 130 | 101 | -22.3% | 13.5% |
| Washington Metro Regional Total^ | 315* | 317 | 307 | 272 | 325 | 376 | 386 | 369 | 326 | -11.7% | 3.5% |
| National Parks in Region | -- | -- | -- | -- | -- | -- | 21 | -- | 16 | -- | -- |
| Regional Total Adjusted | -- | -- | -- | -- | -- | -- | 407 | -- | 342 | -- | -- |
| National | -- | -- | -- | -- | -- | -- | 43,005 | 42,643 | 42,636 | -0.8% | -- |

^Percent change not calculated for all jurisdictions due to missing data elements.

*Data for cities of Manassas and Manassas Park not included in regional totals.

Source for National and state data: National Highway Traffic Safety Administration, U.S. Department of Transportation

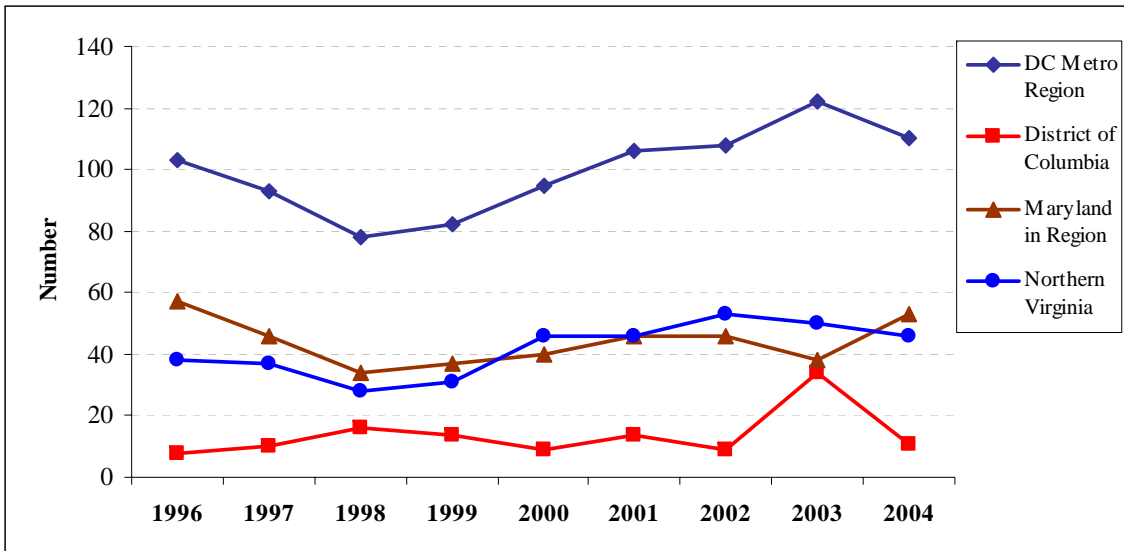


Figure 2: Number of Alcohol-related Traffic Fatalities Over Time, By Region, 1996-2004

Figure 3: Total Number of Motor Vehicle Fatalities Over Time, By Region, 1996-2004

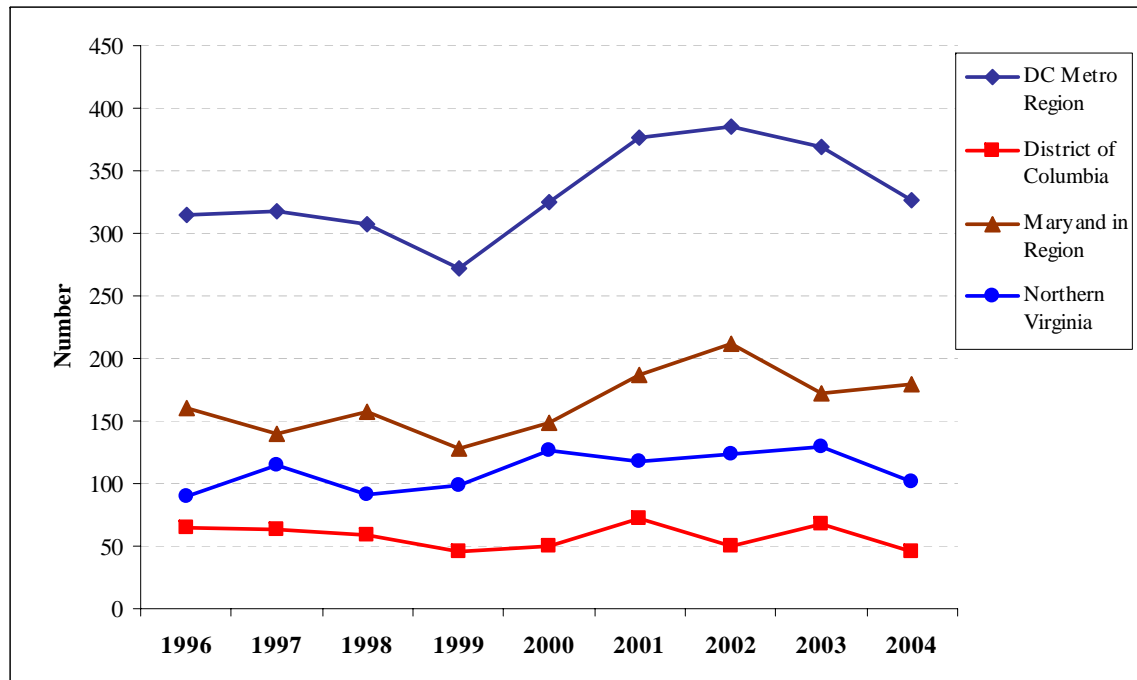


Table 4: Percentage of All Traffic Fatalities that were Alcohol Related by Jurisdiction, 1996-2004

| | 1996 | 1997 | 1998 | 1999 | 2000 | 2001 | 2002 | 2003 | 2004 |
|--|---------------|--------------|--------------|--------------|--------------|--------------|--------------|--------------|--------------|
| District of Columbia | 12.3% | 15.9% | 27.1% | 30.4% | 18.0% | 19.4% | 18.0% | 50.7% | 24.4% |
| Maryland | | | | | | | | | |
| <i>State Total</i> | - | - | - | - | - | - | 41.8% | 43.3% | 44.9% |
| Montgomery County | 14.3% | 30.9% | 17.4% | 24.5% | 22.4% | 30.5% | 15.5% | 24.0% | 27.1% |
| Prince George's County | 44.6% | 34.1% | 23.4% | 31.6% | 29.7% | 21.9% | 24.8% | 21.3% | 30.6% |
| MD Regional Total | 35.4% | 32.9% | 21.7% | 28.9% | 26.8% | 24.6% | 21.7% | 22.1% | 29.4% |
| Virginia | | | | | | | | | |
| <i>State Total</i> | - | - | - | - | - | - | 41.5% | 38.3% | 37.2% |
| Arlington County | 30.0% | 71.4% | 33.3% | 25.0% | 64.3% | 55.6% | 58.3% | 28.6% | 33.3% |
| Fairfax County | 38.1% | 28.8% | 28.9% | 40.8% | 32.9% | 34.0% | 39.1% | 46.8% | 40.6% |
| Loudoun County | 41.2% | 38.5% | 33.3% | 9.1% | 22.2% | 26.7% | 56.3% | 37.5% | 72.7% |
| Prince William County | 64.3% | 31.3% | 26.3% | 29.2% | 33.3% | 51.6% | 43.5% | 25.0% | 50.0% |
| City of Alexandria | 50.0% | 0.0% | 66.7% | 25.0% | 40.0% | 60.0% | 33.3% | 0.0% | 33.3% |
| City of Fairfax | 50.0% | 0.0% | 0.0% | 0.0% | 0.0% | 0.0% | 0.0% | 100.0% | 0.0% |
| City of Falls Church | 50.0% | 0.0% | 0.0% | 0.0% | 0.0% | 0.0% | 0.0% | 0.0% | 0.0% |
| City of Manassas | - | 0.0% | 0.0% | 0.0% | 100.0% | 0.0% | 0.0% | 0.0% | 0.0% |
| City of Manassas Park | - | 0.0% | 0.0% | 0.0% | 0.0% | 0.0% | 0.0% | 0.0% | 0.0% |
| Northern Virginia Total | 42.7%^ | 32.5% | 30.8% | 31.6% | 36.5% | 39.3% | 42.7% | 38.5% | 45.5% |
| Washington Metro Regional Total | 32.7%^ | 29.3% | 25.4% | 30.1% | 29.2% | 28.2% | 28.0% | 33.1% | 33.7% |
| National Parks in Region | -- | -- | -- | -- | -- | -- | 31.8% | -- | 0.0% |
| Regional Total Adjusted | -- | -- | -- | -- | -- | -- | 28.5% | -- | 33.7% |
| National | -- | -- | -- | -- | -- | -- | 40.7% | 39.9% | 39.0% |

^Data for cities of Manassas and Manassas Park not included in regional totals.

Source for National and state data: National Highway Traffic Safety Administration, U.S. Department of Transportation

Source for local data: see jurisdictional contacts in Methodology

Figure 4: Percentage of Total Fatalities Due to Crashes Involving Impaired Drivers Over Time, By Region, 1996-2004

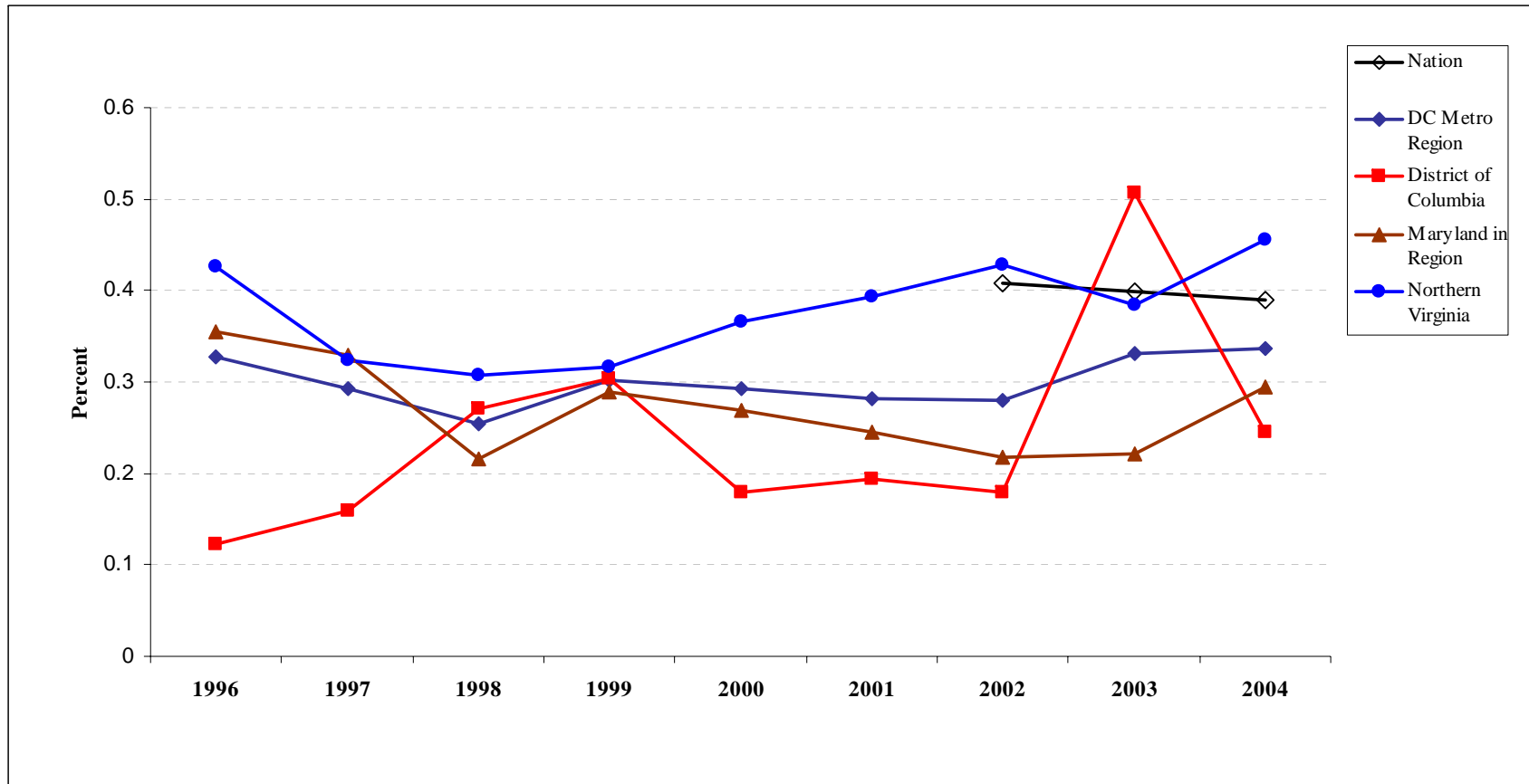


Table 5A: SNAPSHOT! Motor Vehicle Fatalities in 2004

| | Total Fatalities | Alcohol Related Fatalities | Percentage of Total Fatalities that were Alcohol Related | Percent Change Alcohol Related Fatalities, 2003-2004 |
|-----------------------------------|-----------------------------|---|---|---|
| District of Columbia | 45 | 11 | 24.4% | -67.6% |
| Maryland | | | | |
| <i>State Total</i> | 643 | 289 | 44.9% | 2.8% |
| Montgomery County | 59 | 16 | 27.1% | 33.3% |
| Prince George's County | 121 | 37 | 30.6% | 42.3% |
| MD Regional Total | 180 | 53 | 29.4% | 39.5% |
| Virginia | | | | |
| <i>State Total</i> | 919 | 342 | 37.2% | -5.3% |
| Arlington County | 3 | 1 | 33.3% | -50.0% |
| Fairfax County | 64 | 26 | 40.6% | -10.3% |
| Loudoun County | 11 | 8 | 72.7% | -11.1% |
| Prince William County | 20 | 10 | 50.0% | 25.0% |
| City of Alexandria | 3 | 1 | 33.3% | 100.0% |
| City of Fairfax | 0 | 0 | 0.0% | -100.0% |
| City of Falls Church | 0 | 0 | 0.0% | 0.0% |
| City of Manassas | 0 | 0 | 0.0% | 0.0% |
| City of Manassas Park | 0 | 0 | 0.0% | 0.0% |
| Northern Virginia Total | 101 | 46 | 45.5% | -8.0% |
| Wash. Metro Regional Total | 326 | 110 | 33.7% | -9.8% |
| National Parks in Region | 16 | 0 | 0.0% | -- |
| Regional Total Adjusted | 342 | 110 | 32.2% | 9.8% |
| National | 42,636 | 16,628 | 39.0% | -2.3% |

Source for national and state data: National Highway Traffic Safety Administration, U.S. Department of Transportation

Source for local data: Jurisdictional contacts, see specific contact in Methodology

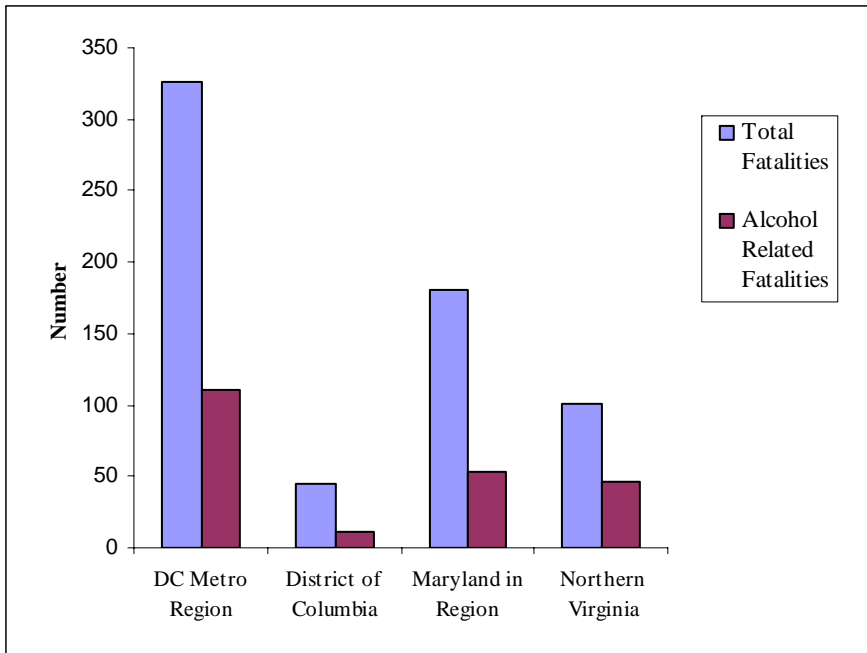


Figure 5A.1: SNAPSHOT! Number of Total and Alcohol-Related Motor Vehicle Fatalities, By Region, 2004

Figure 5A.2: SNAPSHOT! Percentage of Fatalities: Alcohol-Related and Change 2002-2004

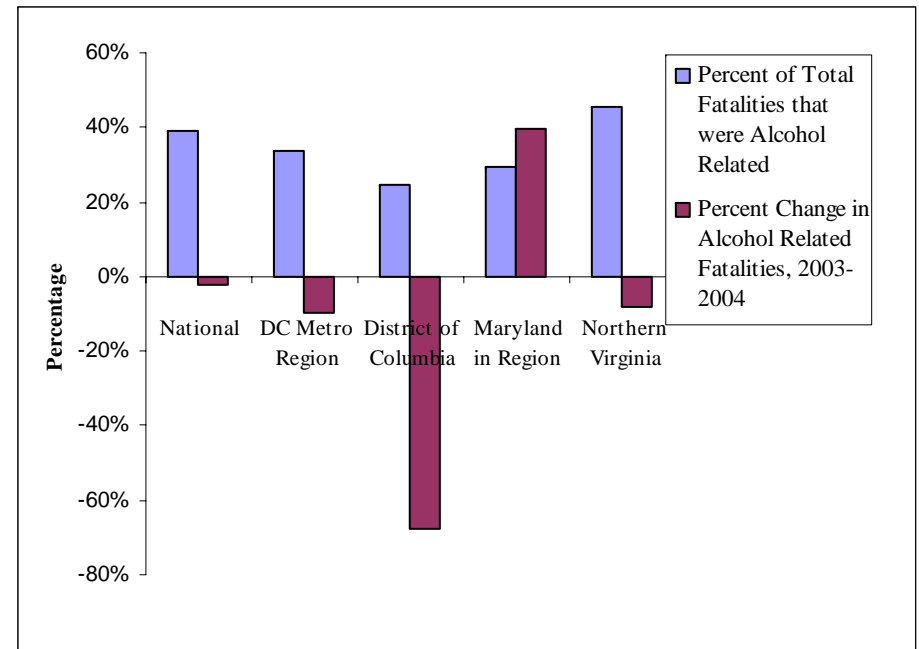


Table 2B: SNAPSHOT! Motor Vehicle Fatalities for Persons Under 21 Years of Age, 2004

| | Total Fatalities | Alcohol Related Fatalities | Percentage of Total Fatalities that were Alcohol Related | Percent Change Alcohol Related Fatalities, 2003-2004 |
|--------------------------------------|-----------------------------|---|---|---|
| District of Columbia | 11 | 1 | 9.1% | 0.0% |
| Maryland | | | | |
| Montgomery County | 15 | 5 | | |
| Prince George's County | 22 | 2 | | |
| MD Regional Total | 37 | 7 | 18.9% | 40.0% |
| Virginia | | | | |
| Arlington County | 0 | 0 | | |
| Fairfax County | 12 | 2 | | |
| Loudoun County | -- | -- | | |
| Prince William County | 2 | -- | | |
| City of Alexandria | 0 | 0 | | |
| City of Fairfax | 0 | 0 | | |
| City of Falls Church | 0 | 0 | | |
| City of Manassas | 0 | 0 | | |
| City of Manassas Park | 0 | 0 | | |
| VA Regional Total | 14 | 2 | 14.3% | -33.3% |
| National Parks in Region | 0 | 0 | 0.0% | -- |
| Regional Total Adjusted | 14 | 2 | 14.3% | -- |
| Washington Metro Region Total | 62 | 10 | 16.1% | 11.1% |

^Montgomery County data for persons under the age of 21 years determined to be driver and "at fault" for accident.

*Prince William County data represents persons under the age of 24 years.

Source for local data: see jurisdictional contacts in Methodology

NOTE: Data on persons under age 21 is not consistently recorded between jurisdictions. Caution must be used in drawing conclusions based on this data.

TRAFFIC CRASHES

Washington Metro Region

The number of alcohol-related motor vehicle crashes decreased in the Washington Metro Region between 2003 and 2004. While the percentage of crashes involving alcohol is relatively low, these crashes lead to injury and death at a much higher rate than overall crashes.

Alcohol-related crashes in the Washington Metro region decreased 11.6% in 2004.

There were 83,790 motor vehicle crashes in the Washington Metro Region in 2004; 4,840 as a result of alcohol impairment. Total crashes decreased 7.8% from last year and alcohol-related crashes decreased 11.6% compared to 2003. The percentage of alcohol-related crashes decreased from 6.0% in 2003 to 5.8% in 2004.

Until this year's decrease, the number of reported alcohol-related traffic crashes in the Washington Metro Region had grown each year from 1997 until 2003. The percentage of alcohol-related crashes to total crashes has ranged between a low of 5.6% and a high of 7.2% over the past five years.

Motor vehicle crashes related to impaired driving in the Washington Metro Region have decreased by 5.2% between 1996 and 2004. The total number of traffic crashes increased 43.9% during that same nine-year time period. However, it should be noted that data for the District of Columbia is missing for four of the nine years, including the base year of 1996, making this change appear larger than is likely the actual case.

Regional Jurisdictions

District of Columbia

The District of Columbia saw the largest decrease in both total and alcohol-related motor vehicle crashes in the Washington Metro Region.

Total crashes decreased by 18.6% and alcohol-related crashes dropped by an impressive 62.6%. The percentage of crashes that were alcohol-related (1.4%) was significantly lower than the rest of the Washington Metro region.

Montgomery and Prince George's Counties, Maryland

The Maryland counties saw a decrease in the number of alcohol-related crashes in 2004. This is tempered by the fact that there was a small increase in the percentage of crashes related to alcohol.

Since 1996, counties in the Maryland Region have seen a significant decrease in alcohol-related crashes (-16.6%).

There was a 3.8% decrease in the number of alcohol-related crashes in 2004 compared to 2003. The percentage of crashes involving alcohol was 7.4%. Total crashes decreased by 4.9%.

Alcohol-related crashes decreased in the past year in Prince George's County by 7.1% while Montgomery County saw a slight increase (0.2%). Overall traffic crashes decreased in both Prince George's County (-5.8%) and in Montgomery County (-3.7%).

Since 1996, the Maryland counties in the Washington Metro Region have seen a decrease in the number of alcohol-related crashes (-16.6%). Montgomery County's highest percentage of alcohol-related crashes was in 1996 (8.3%); its lowest was 5.1% in 2001. Prince George's County's highest rate was also in 1996 (9.2%), with its lowest being in 6.2% in 1999. The number of total motor vehicle crashes has decreased (-1%) from 1996 to 2004.

Northern Virginia

2004 saw improvement in both the number of alcohol-related motor vehicle crashes and the number of total crashes in Northern Virginia. The year also brought an overall decrease in the incidence of alcohol-related motor vehicle crashes (-4.4%) compared to 2003. The percentage of crashes related to alcohol was down 6.7% in 2004, matching last year's decrease.

Localities within the Northern Virginia region had widely varying activity in 2004. For example the largest decrease in alcohol-related traffic crashes in the Northern Virginia region was in the City of Falls Church (-47.4%); the largest increase was in the City of

Manassas (37.3%). The percentage of crashes related to alcohol ranged from 9.6% in Manassas Park to 3.5% in the City of Falls Church.

Between 1996 and 2004 the number of alcohol-related crashes in Northern Virginia rose 20.1%. In the same time period, total crashes rose 25.3%. The percentage of crashes that were related to alcohol was at a low of 6.4% in 2000.

| Table 6: Alcohol Related Traffic Crashes by Jurisdiction, 1996-2004 | | | | | | | | | | | |
|--|---------------|---------------|---------------|---------------|---------------|--------------|---------------|--------------|--------------|----------------|---------------|
| | 1996 | 1997 | 1998 | 1999 | 2000 | 2001 | 2002 | 2003 | 2004 | Percent Change | |
| | | | | | | | | | | 2003-2004 | 1996-2004 |
| District of Columbia | - | - | - | - | - | 287 | - | 698 | 261 | -62.6% | -- |
| Maryland | | | | | | | | | | | |
| Montgomery County | 1,131 | 809 | 775 | 926 | 899 | 720 | 963 | 1,010 | 1,012 | 0.2% | -10.5% |
| Prince George's County | 1,449 | 962 | 1,003 | 876 | 1,011 | 1,305 | 1,299 | 1,226 | 1,139 | -7.1% | -21.4% |
| MD Regional Total | 2,580 | 1,771 | 1,778 | 1,802 | 1,910 | 2,025 | 2,262 | 2,236 | 2,151 | -3.8% | -16.6% |
| Virginia | | | | | | | | | | | |
| Arlington County | 305 | 281 | 272 | 307 | 339 | 352 | 358 | 324 | 268 | -17.3% | -12.1% |
| Fairfax County | 994 | 967 | 969 | 1,073 | 1,057 | 1,233 | 1,250 | 1,243 | 1,198 | -3.6% | 20.5% |
| Loudoun County | 172 | 137 | 156 | 166 | 166 | 222 | 259 | 246 | 236 | -4.1% | 37.2% |
| Prince William County | 346 | 358 | 356 | 380 | 430 | 415 | 443 | 462 | 452 | -2.2% | 30.6% |
| City of Alexandria | 161 | 152 | 140 | 127 | 136 | 124 | 130 | 124 | 139 | 12.1% | -13.7% |
| City of Fairfax | 27 | 29 | 50 | 36 | 40 | 52 | 51 | 59 | 44 | -25.4% | 63.0% |
| City of Falls Church | 17 | 12 | 18 | 18 | 21 | 12 | 13 | 19 | 10 | -47.4% | -41.2% |
| City of Manassas | - | 34 | 44 | 48 | 41 | 50 | 65 | 51 | 70 | 37.3% | - |
| City of Manassas Park | - | 8 | 15 | 19 | 12 | 12 | 12 | 12 | 11 | -8.3% | - |
| Northern Virginia Total | 2,022* | 1,978 | 2,020 | 2,171 | 2,242 | 2,472 | 2,581 | 2,540 | 2,428 | -4.4% | 20.1% |
| Washington Metro Regional Total | 4,602* | 3,749* | 3,798* | 3,976* | 4,152* | 4,784 | 4,843* | 5,474 | 4,840 | -11.6% | 5.2% |
| National Parks in Region | -- | -- | -- | -- | -- | -- | 132 | -- | 110 | -- | -- |
| Regional Total Adjusted | -- | -- | -- | -- | -- | -- | 4,975 | -- | 4,950 | -- | -- |

*Regional totals do not include jurisdictions with missing data.

#District of Columbia percentage 2001-2004

Source: Jurisdictional contacts, see specific contact in Methodology

| Table 7: Total Traffic Crashes by Jurisdiction, 1996-2004 | | | | | | | | | | | |
|--|----------------|---------------|----------------|----------------|----------------|---------------|---------------|---------------|---------------|----------------|----------------|
| | 1996 | 1997 | 1998 | 1999 | 2000 | 2001 | 2002 | 2003 | 2004 | Percent Change | |
| | | | | | | | | | | 2003-2004 | 1996-2004 # |
| District of Columbia | - | 16,300 | - | - | - | 18,261 | 17,734 | 22,722 | 18,490 | -18.6% | 13.4% # |
| Maryland | | | | | | | | | | | |
| Montgomery County | 13,548 | 13,015 | 12,811 | 12,779 | 13,356 | 14,220 | 13,784 | 13,553 | 13,053 | -3.7% | -3.7% |
| Prince George's County | 15,695 | 14,792 | 14,430 | 14,226 | 15,332 | 16,023 | 16,602 | 16,885 | 15,901 | -5.8% | 1.3% |
| MD Regional Total | 29,243 | 27,807 | 27,241 | 27,005 | 28,688 | 30,243 | 30,386 | 30,438 | 28,954 | -4.9% | -1.0% |
| Virginia | | | | | | | | | | | |
| Arlington County | 3,492 | 3,409 | 3,324 | 3,378 | 3,457 | 3,434 | 3,740 | 3,532 | 3,584 | 1.5% | 2.6% |
| Fairfax County | 15,513 | 15,453 | 16,476 | 17,913 | 19,082 | 19,636 | 18,866 | 19,040 | 18,728 | -1.6% | 20.7% |
| Loudoun County | 2,003 | 1,933 | 2,168 | 2,685 | 3,034 | 3,697 | 3,725 | 5,286 | 3,824 | -27.7% | 90.9% |
| Prince William County | 4,643 | 4,541 | 4,595 | 4,895 | 5,310 | 5,883 | 5,899 | 5,230 | 5,492 | 5.0% | 18.3% |
| City of Alexandria | 2,511 | 2,517 | 2,397 | 2,319 | 2,282 | 2,118 | 2,306 | 2,188 | 2,274 | 3.9% | -9.4% |
| City of Fairfax | 567 | 733 | 756 | 713 | 840 | 953 | 928 | 1,125 | 1,124 | -0.1% | 98.2% |
| City of Falls Church | 270 | 291 | 265 | 309 | 316 | 267 | 268 | 245 | 283 | 15.5% | 4.8% |
| City of Manassas | - | 668 | 733 | 689 | 787 | 902 | 846 | 813 | 923 | 13.5% | 38.2% |
| City of Manassas Park | - | 86 | 88 | 181 | 87 | 124 | 118 | 276 | 114 | -58.7% | 1.5% |
| Northern Virginia Total | 28,999* | 29,631 | 30,802 | 33,082 | 35,195 | 37,014 | 36,696 | 37,735 | 36,346 | -3.7% | 25.3% |
| Washington Metro Regional Total | 58,242* | 73,738 | 58,043* | 60,087* | 63,883* | 85,518 | 84,816 | 90,895 | 83,790 | -7.8% | 43.9% # |
| National Parks in Region | -- | -- | -- | -- | -- | -- | 2,978 | -- | 3,640 | -- | -- |
| Regional Total Adjusted | -- | -- | -- | -- | -- | -- | 87794 | 90,895 | 87,430 | -3.8% | -- |

*Regional totals do not include jurisdictions with missing data.

#District of Columbia & Metro Regional Total percent changes reflect 1997-2004

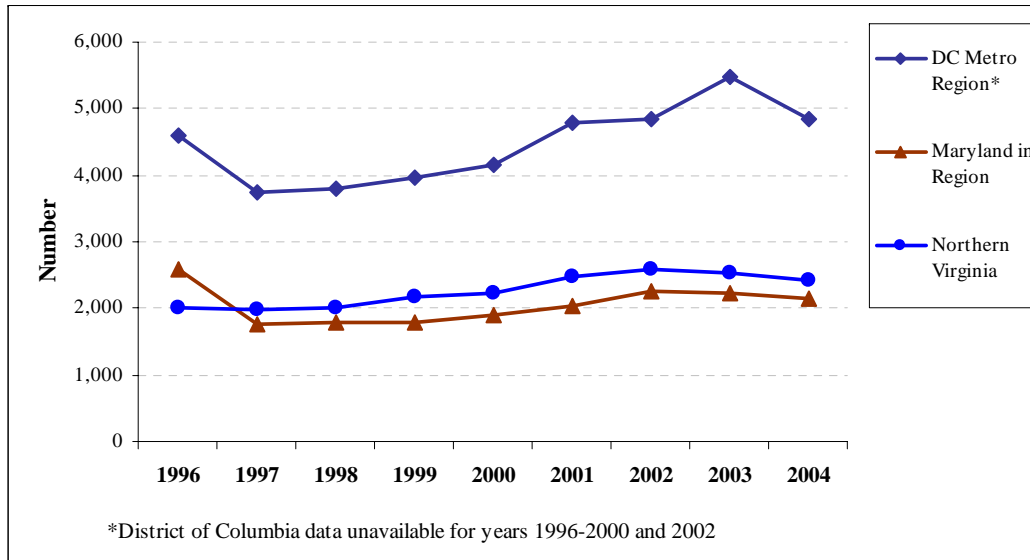


Figure 6: Number of Alcohol-related Traffic Crashes Over Time, By Region, 1996-2004

Figure 7: Total Number of Motor Vehicle Crashes Over Time, By Region, 1996-2004

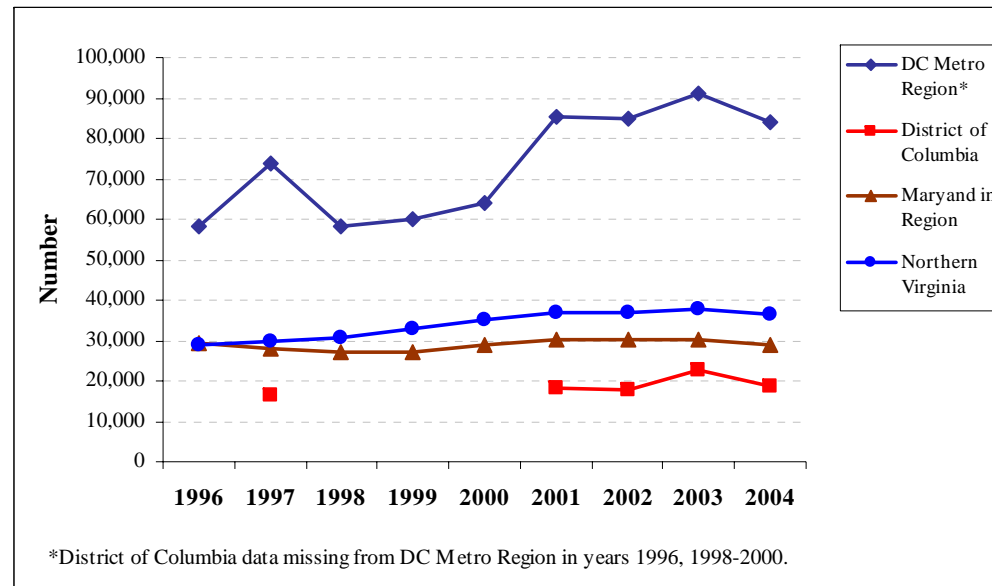


Table 8: Percentage of all Traffic Crashes that were Alcohol Related, 1996-2004

| | 1996 | 1997 | 1998 | 1999 | 2000 | 2001 | 2002 | 2003 | 2004 |
|--|--------------|--------------|-------------|-------------|-------------|-------------|--------------|-------------|-------------|
| District of Columbia | - | - | - | - | - | 1.6% | - | 3.1% | 1.4% |
| Maryland | | | | | | | | | |
| Montgomery County | 8.3% | 6.2% | 6.0% | 7.2% | 6.7% | 5.1% | 7.0% | 7.5% | 7.8% |
| Prince George's County | 9.2% | 6.5% | 7.0% | 6.2% | 6.6% | 8.1% | 7.8% | 7.3% | 7.2% |
| MD Regional Total | 8.8% | 6.4% | 6.5% | 6.7% | 6.7% | 6.7% | 7.4% | 7.3% | 7.4% |
| Virginia | | | | | | | | | |
| Arlington County | 8.7% | 8.2% | 8.2% | 9.1% | 9.8% | 10.3% | 9.6% | 9.2% | 7.5% |
| Fairfax County | 6.4% | 6.3% | 5.9% | 6.0% | 5.5% | 6.3% | 6.6% | 6.5% | 6.4% |
| Loudoun County | 8.6% | 7.1% | 7.2% | 6.2% | 5.5% | 6.0% | 7.0% | 4.7% | 6.2% |
| Prince William County | 7.5% | 7.9% | 7.7% | 7.8% | 8.1% | 7.1% | 7.5% | 8.8% | 8.2% |
| City of Alexandria | 6.4% | 6.0% | 5.8% | 5.5% | 6.0% | 5.9% | 5.6% | 5.7% | 6.1% |
| City of Fairfax | 4.8% | 4.0% | 6.6% | 5.0% | 4.8% | 5.5% | 5.5% | 5.2% | 3.9% |
| City of Falls Church | 6.3% | 4.1% | 6.8% | 5.8% | 6.6% | 4.5% | 4.9% | 7.8% | 3.5% |
| City of Manassas | - | 5.1% | 6.0% | 7.0% | 5.2% | 5.5% | 7.7% | 6.3% | 7.6% |
| City of Manassas Park | - | 9.3% | 17.0% | 10.5% | 13.8% | 9.7% | 10.2% | 4.3% | 9.6% |
| Northern Virginia Total | 7.0%^ | 6.7% | 6.6% | 6.6% | 6.4% | 6.7% | 7.0% | 6.7% | 6.7% |
| Washington Metro Regional Total | 7.9%^ | 6.5%* | 6.5% | 6.6% | 6.5% | 5.6% | 7.2%* | 6.0% | 5.8% |
| National Parks in Region | -- | -- | -- | -- | -- | -- | 4.4% | -- | -- |
| Regional Total Adjusted | -- | -- | -- | -- | -- | -- | 5.8% | 6.0% | 5.8% |

^Percentage not calculated for all jurisdictions due to missing data elements.
 *Percentage calculated excludes District of Columbia total crashes due to missing data on alcohol-related crashes.
 Source: Jurisdictional contacts, see specific contact in Methodology

Figure 8: Percentage of Total Crashes Due to Crashes Involving Impaired Drivers Over Time, By Region, 1996-2004

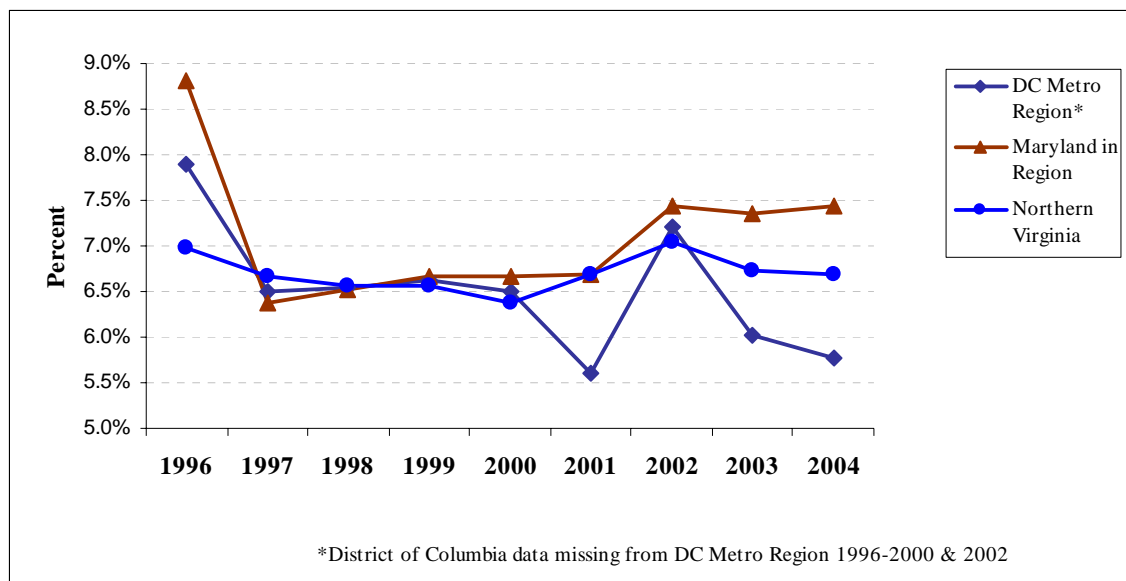


Table 9: SNAPSHOT! Motor Vehicle Crashes in 2004

| | Total Crashes | Alcohol Related Crashes | Percentage of Total Crashes that were Alcohol Related | Percentage Change Alcohol-related Crashes, 2003-2004 |
|--|----------------------|--------------------------------|--|---|
| District of Columbia | 18,490 | 261 | 1.4% | -62.6% |
| Maryland | | | | |
| Montgomery County | 13,053 | 1,012 | 7.8% | 0.2% |
| Prince George's County | 15,901 | 1,139 | 7.2% | -7.1% |
| MD Regional Total | 28,954 | 2,151 | 7.4% | -3.8% |
| Virginia | | | | |
| Arlington County | 3,584 | 268 | 7.5% | -17.3% |
| Fairfax County | 18,728 | 1,198 | 6.4% | -3.6% |
| Loudoun County | 3,824 | 236 | 6.2% | -4.1% |
| Prince William County | 5,492 | 452 | 8.2% | -2.2% |
| City of Alexandria | 2,274 | 139 | 6.1% | 12.1% |
| City of Fairfax | 1,124 | 44 | 3.9% | -25.4% |
| City of Falls Church | 283 | 10 | 3.5% | -47.4% |
| City of Manassas | 923 | 70 | 7.6% | 37.3% |
| City of Manassas Park | 114 | 11 | 9.6% | -8.3% |
| Northern Virginia Total | 36,346 | 2,428 | 6.7% | -4.4% |
| Washington Metro Regional Total | 83,790 | 4,840 | 5.8% | -11.6% |
| National Parks in Region | 3,640 | 110 | -- | -- |
| Regional Total Adjusted | 87,430 | 4,950 | 7.0% | -11.6% |

Source: Jurisdictional contacts, see specific contact in Methodology

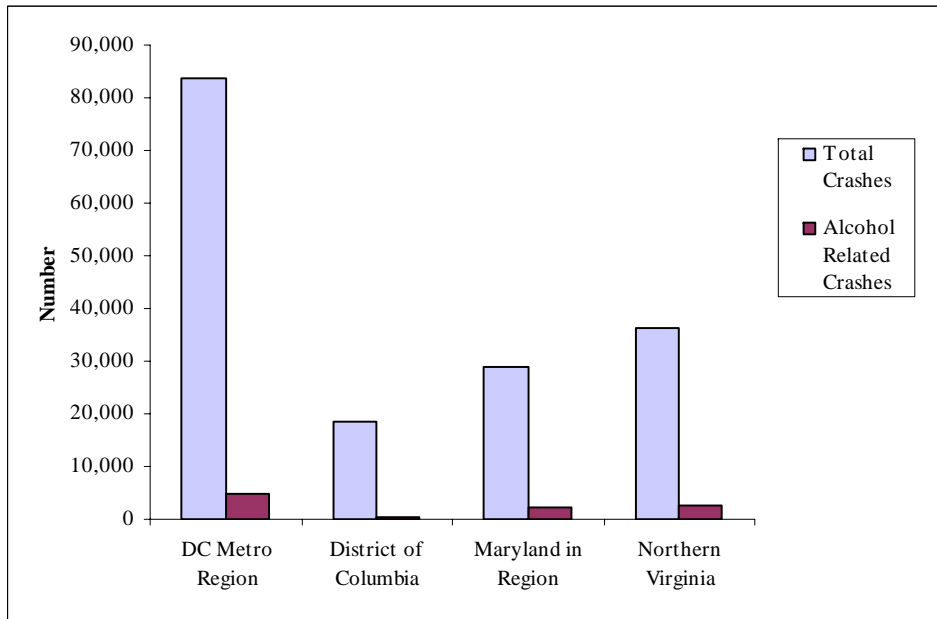
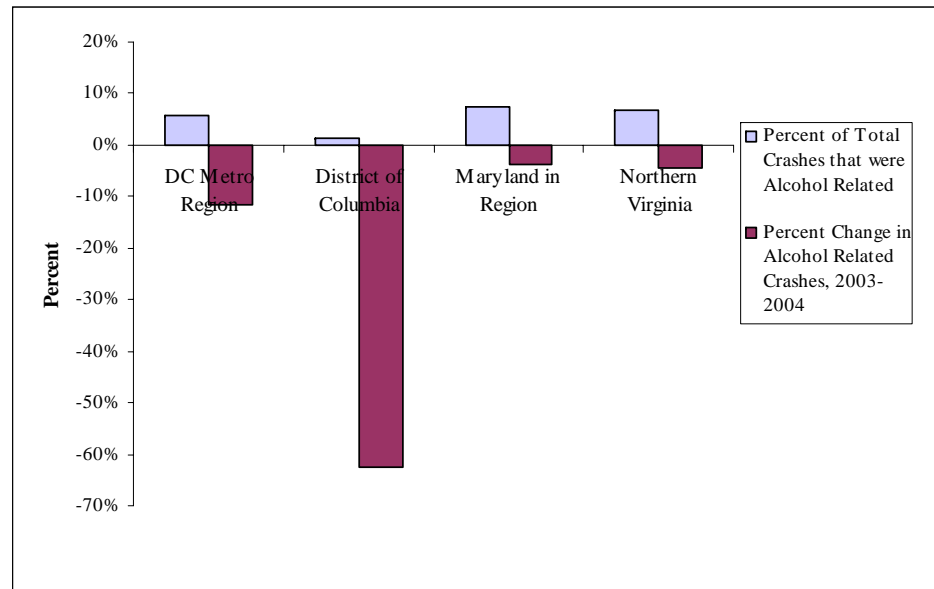


Figure 9A: SNAPSHOT! Number of Total and Alcohol-related Motor Vehicle Crashes, By Region, 2004

Figure 9B: SNAPSHOT! Percentage of Crashes: Alcohol-related and Change 2002-2004



TRAFFIC INJURIES

Washington Metro Region

Overall, there was a decrease in both the number of people injured in motor vehicle crashes and in the number of alcohol-related injuries in the Washington Metro Region in 2004. The decrease in alcohol-related injuries between 2003 and 2004 was seen in every jurisdiction but one. In addition, the number of alcohol-related injuries in the majority of jurisdictions was the lowest seen in the past 3 years.

The decrease in alcohol-related injuries between 2003-2004 was significant and was seen in all but one jurisdiction.

Specifically, total traffic injuries decreased by 0.4% in the past year while the number of reported alcohol-related injuries decreased by 20.1% compared to 2003. The percentage of traffic injuries related to alcohol impairment was down 2.3%.

This year's decrease in injuries from alcohol-related crashes is the first decrease since 2001, and represents an 5.7% decrease from 1999. The total number of motor vehicle injuries has decreased every year since 2001.

Regional Jurisdictions

District of Columbia

The District of Columbia experienced the largest decrease in alcohol-related traffic injuries in the Washington Metropolitan Region. This is despite an increase in the total number of traffic injuries seen in the District in 2004.

Alcohol-related injuries were down by a noteworthy 85.9% in the District of Columbia.

Specifically, alcohol-related injuries were down by a noteworthy 85.9% compared to 2003. During the same period the total number of injuries increased by 14.2%. The percentage of injuries related to alcohol was just 1.5%, which is 10.6% lower than last year and significantly lower than the rest of the region.

Montgomery and Prince George's Counties, Maryland

Montgomery and Prince George's counties both saw decreases in alcohol-related injuries in 2004, though Prince George's reduction was more than double that of Montgomery County's.

Montgomery and Prince George's counties both saw a decrease in alcohol-related injuries in 2004.

For the Maryland Region, alcohol-related motor vehicle injuries decreased by 8.5% in the past year and overall injuries decreased by 6.7%. The percentage of injuries related to alcohol decreased from 9.8% in 2003 to 9.6% in 2004.

Since 1999, the area has seen impressive decreases in injuries due to alcohol-related crashes (-15.5%) as well as the number of overall injuries (-38.6%). The percentage of alcohol-related injuries in both 2003 and 2004 were significantly higher than in the three years prior.

Northern Virginia

Northern Virginia saw a decrease in the number of alcohol-related motor vehicle injuries as well as the percentage of injuries that were alcohol-related in 2004. There was wide variation in the results reported by individual jurisdictions in Northern Virginia.

Alcohol-related traffic injuries in Northern Virginia decreased 6.8% in 2004 compared with 2003. The percentage of all injuries related to alcohol decreased from 14.1% in 2003 to 13.0% in 2004. It is important to note that these aggregate regional totals are made up of jurisdictional rates that are widely different. For example, the number of alcohol-

related injuries ranges from a decrease of 30.3% in the City of Fairfax to an increase of 46.7% in the City of Manassas.

There was a 1.3% decrease in alcohol-related injuries between 1999 and 2003. Total injuries fell by a much greater amount in 2003 compared with 1999 (27.9%). The percentage of injuries related to alcohol fell from 14.1% in 2003 to 13.0% in 2004.

Table 10: Alcohol-Related Traffic Injuries by Jurisdiction, 1999-2004

| | 1999 | 2000 | 2001 | 2002 | 2003 | 2004 | Percent Change | |
|--|---------------|---------------|--------------|--------------|--------------|--------------|----------------|---------------|
| | | | | | | | 2003-2004 | 1999-2004 |
| District of Columbia | - | - | 92 | 213 | 576 | 81 | -85.9% | -12.0%# |
| Maryland | | | | | | | | |
| Montgomery County | 637 | 463 | 292 | 377 | 660 | 626 | -5.2% | -1.7% |
| Prince George's County | 876 | 660 | 586 | 877 | 738 | 653 | -11.5% | -25.5% |
| MD Regional Total | 1,513 | 1,123 | 878 | 1,254 | 1,398 | 1,279 | -8.5% | -15.5% |
| Virginia | | | | | | | | |
| Arlington County | 160 | 185 | 196 | 190 | 166 | 155 | -6.6% | -3.1% |
| Fairfax County | 815 | 663 | 770 | 827 | 803 | 759 | -5.5% | -6.9% |
| Loudoun County | 126 | 112 | 128 | 171 | 154 | 133 | -13.6% | 5.6% |
| Prince William County | 281 | 317 | 263 | 284 | 311 | 286 | -- | -- |
| City of Alexandria | 93 | 105 | 108 | 128 | 115 | 104 | -9.6% | 11.8% |
| City of Fairfax | 14 | 23 | 7 | 31 | 33 | 23 | -30.3% | 64.3% |
| City of Falls Church | 10 | 10 | 4 | 8 | 12 | 10 | -16.7% | 0.0% |
| City of Manassas | 28 | 20 | 28 | 37 | 30 | 44 | 46.7% | 57.1% |
| City of Manassas Park | 11 | 4 | 6 | 9 | 4 | 4 | 0.0% | -63.6% |
| Northern Virginia Total | 1,538 | 1,439 | 1,510 | 1,685 | 1,628 | 1,518 | -6.8% | -1.3% |
| Washington Metro Regional Total | 3,051* | 2,562* | 2,480 | 3,152 | 3,602 | 2,878 | -20.1% | 16.0%# |
| National Parks in Region | -- | -- | -- | 80 | -- | 68 | -- | -- |
| Regional Total Adjusted | -- | -- | -- | 3,232 | -- | 2,946 | -- | 16.0%# |

*Regional totals do not include jurisdictions with missing data.

#District of Columbia & DC Regional Total percentage change for 2001-2004

Source: Jurisdictional contacts, see specific contact in Methodology

Table 11: Total Traffic Injuries by Jurisdiction, 1996-2004

| | 1996 | 1997 | 1998 | 1999 | 2000 | 2001 | 2002 | 2003 | 2004 | Percent Change | |
|--|----------------|----------------|---------------|---------------|---------------|---------------|---------------|---------------|---------------|----------------|---------------|
| | | | | | | | | | | 2003-2004 | 1999-2004 |
| District of Columbia | - | - | - | - | - | 9,253 | 5,650 | 4,748 | 5,421 | 14.2% | -41.4% |
| Maryland | | | | | | | | | | | |
| Montgomery County | 9,527 | 8,740 | 8,148 | 8,182 | 8,271 | 5,981 | 8,733 | 8,069 | 7,642 | -5.3% | -19.8% |
| Prince George's County | 12,172 | 11,113 | 9,882 | 9,261 | 9,610 | 10,028 | 10,062 | 6,206 | 5,681 | -8.5% | -53.3% |
| MD Regional Total | 21,699 | 19,853 | 18,030 | 17,443 | 17,881 | 16,009 | 18,795 | 14,275 | 13,323 | -6.7% | -38.6% |
| Virginia | | | | | | | | | | | |
| Arlington County | 2,024 | 1,929 | 1,955 | 1,946 | 1,894 | 1,966 | 1,658 | 1,274 | 1,408 | 10.5% | -30.4% |
| Fairfax County | 8,261 | 8,333 | 8,523 | 9,117 | 9,405 | 9,865 | 9,657 | 5,134 | 5,113 | -0.4% | -38.1% |
| Loudoun County | 1,132 | 1,102 | 1,129 | 1,347 | 1,419 | 1,643 | 1,654 | 1,278 | 899 | -29.7% | -20.6% |
| Prince William County | 3,004 | 2,922 | 2,840 | 2,984 | 3,050 | 3,316 | 3,246 | 2,767 | 2,847 | 2.9% | -5.2% |
| City of Alexandria | 1,371 | 1,323 | 1,380 | 1,407 | 1,309 | 1,382 | 1,395 | 320 | 769 | 140.3% | -43.9% |
| City of Fairfax | 280 | 389 | 368 | 332 | 366 | 415 | 383 | 266 | 196 | -26.3% | -30.0% |
| City of Falls Church | 142 | 128 | 112 | 146 | 152 | 97 | 118 | 42 | 196 | 366.7% | 38.0% |
| City of Manassas | - | 350 | 365 | 323 | 345 | 439 | 390 | 399 | 232 | -41.9% | - |
| City of Manassas Park | - | 41 | 20 | 80 | 52 | 56 | 45 | 67 | 33 | -50.7% | - |
| Northern Virginia Total | 16,214* | 16,517 | 16,692 | 17,682 | 17,992 | 19,179 | 18,546 | 11,547 | 11,693 | 1.3% | -27.9% |
| Washington Metro Regional Total | 37,913* | 36,370* | 34,722 | 35,125 | 35,873 | 44,441 | 42,991 | 30,570 | 30,437 | -0.4% | -31.5% |
| National Parks in Region | -- | -- | -- | -- | -- | -- | 911 | -- | 747 | -- | -- |
| Regional Total Adjusted | -- | -- | -- | -- | -- | -- | 43,902 | -- | 31,184 | -- | -- |

*District of Columbia & Regional percentage change 2001-2004.

Source: Jurisdictional contacts, see specific contact in Methodology

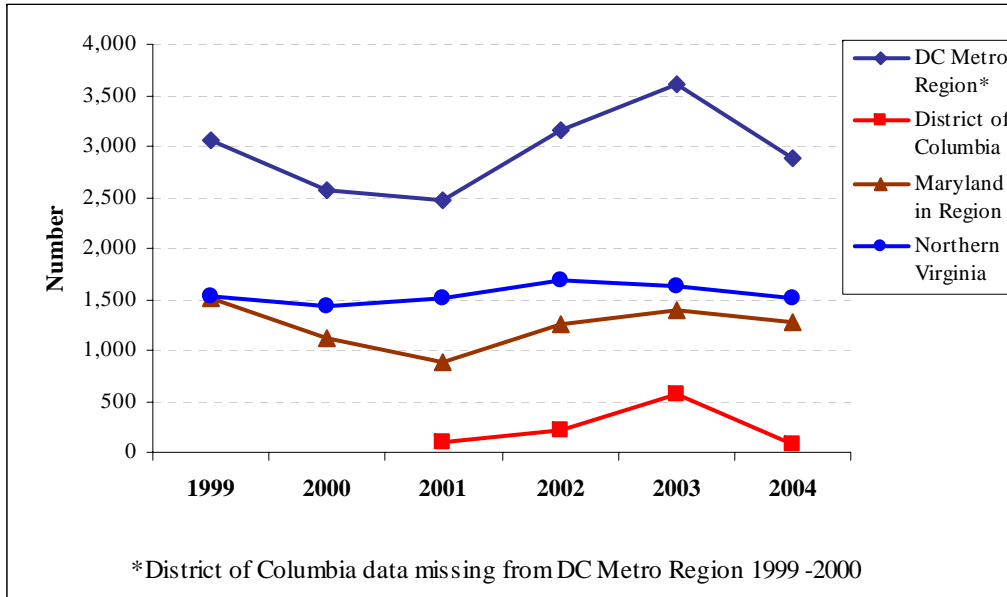


Figure 10: Number of Alcohol-Related Traffic Injuries Over Time, By Region, 1999-2004

Figure 11: Total Number of Motor Vehicle Injuries Over Time, By Region, 1999-2004

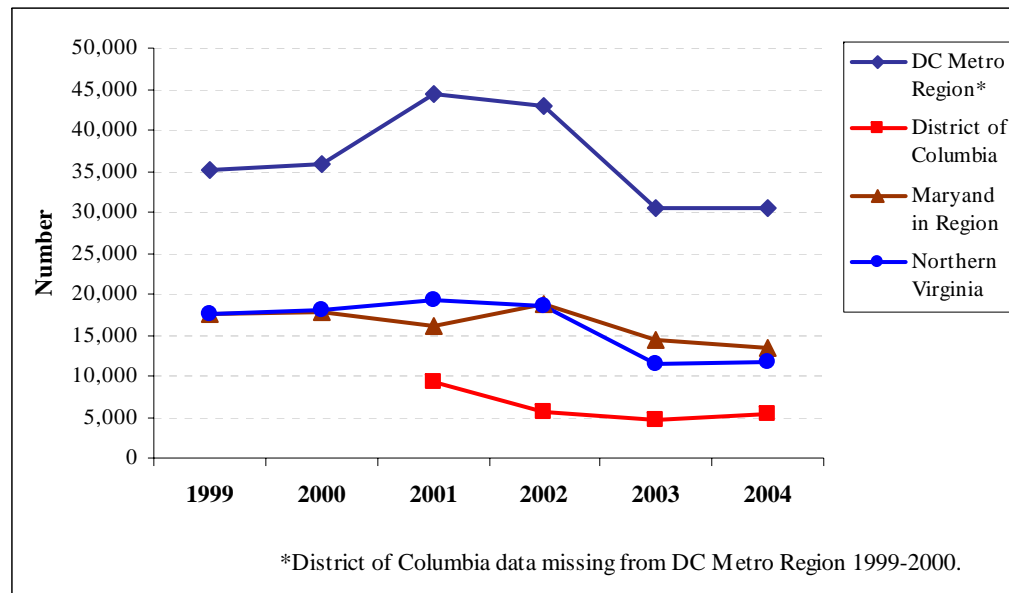


Table 12: Percentage of all Traffic Injuries that were Alcohol Related, 1999-2004

| | 1999 | 2000 | 2001 | 2002 | 2003 | 2004 |
|---------------------------------|--------------|--------------|--------------|-------------|---------------|---------------|
| District of Columbia | - | - | 1.0% | 3.8% | 12.1% | 1.5% |
| Maryland | | | | | | |
| Montgomery County | 7.8% | 5.6% | 4.9% | 4.3% | 8.2% | 8.2% |
| Prince George's County | 9.5% | 6.9% | 5.8% | 8.7% | 11.9% | 11.5% |
| MD Regional Total | 8.7% | 6.3% | 5.5% | 6.7% | 9.8% | 9.6% |
| Virginia | | | | | | |
| Arlington County | 8.2% | 9.8% | 10.0% | 11.5% | 13.0% | 11.0% |
| Fairfax County | 8.9% | 7.0% | 7.8% | 8.6% | 15.6% | 14.8% |
| Loudoun County | 9.4% | 7.9% | 7.8% | 10.3% | 12.1% | 14.8% |
| Prince William County | 9.4% | 10.4% | 7.9% | 8.7% | 11.2% | -- |
| City of Alexandria | 6.6% | 8.0% | 7.8% | 9.2% | 35.9% | 13.5% |
| City of Fairfax | 4.2% | 6.3% | 1.7% | 8.1% | 12.4% | 11.7% |
| City of Falls Church | 6.8% | 6.6% | 4.1% | 6.8% | 28.6% | 5.1% |
| City of Manassas | 8.7% | 5.8% | 6.4% | 9.5% | 7.5% | 19.0% |
| City of Manassas Park | 13.8% | 7.7% | 10.7% | 20.0% | 6.0% | 12.1% |
| Northern Virginia Total | 8.7% | 8.0% | 7.9% | 9.1% | 14.1% | 13.0%* |
| Wash Metro Region Total | 8.7%* | 7.1%* | 5.6% | 7.3% | 11.8% | 9.5%* |
| National Parks in Region | -- | -- | -- | 7.4% | -- | 9.1% |
| Regional Total Adjusted | 8.7%* | 7.1%* | 5.6%* | 7.4% | 11.8%* | 8.7%* |

*Regional totals do not include jurisdictions with missing data.

Source: Jurisdictional contacts, see specific contact in Methodology

Figure 12: Percentage of Total Injuries Due to Crashes Involving Impaired Drivers Over Time, By Region, 1999-2004

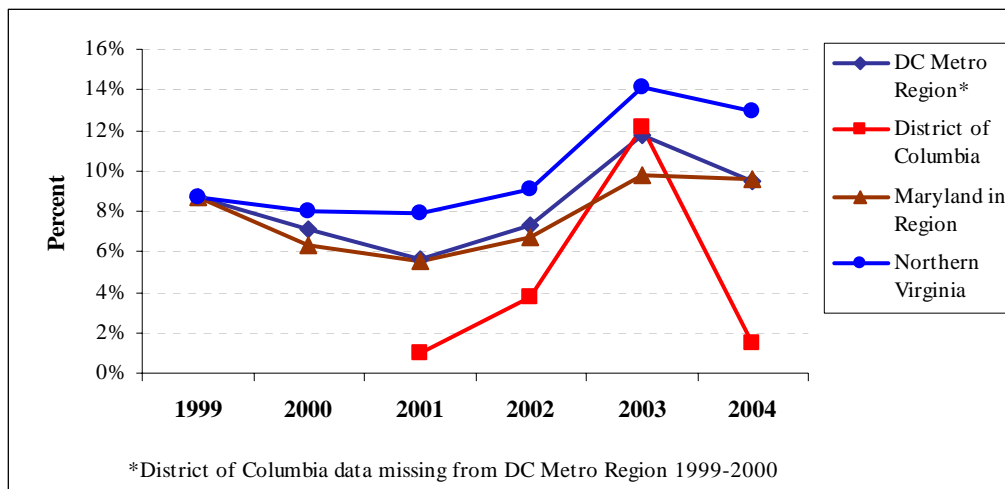
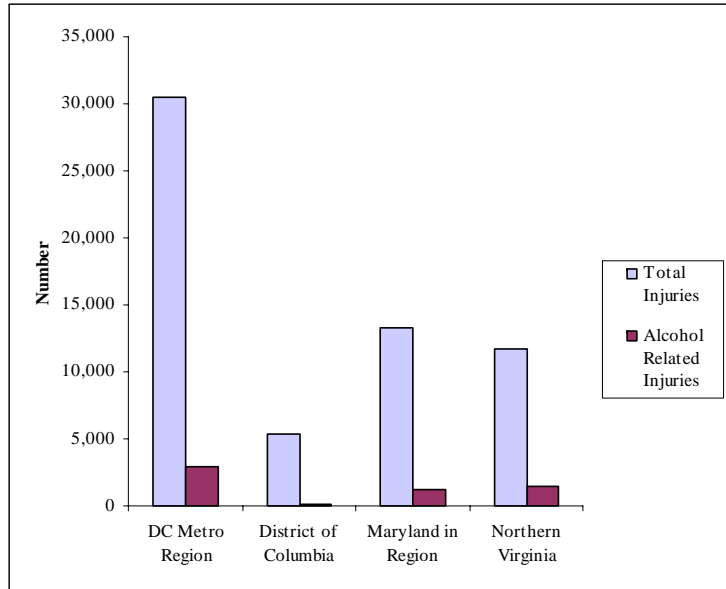


Table 13: SNAPSHOT! Motor Vehicle Injuries in 2004

| | Total Injuries | Alcohol Related Injuries | Percentage of Total Injuries that were Alcohol Related | Percent Change Alcohol Related Injuries, 2003-2004 |
|--|-----------------------|---------------------------------|---|---|
| District of Columbia | 5,421 | 81 | 1.5% | -85.9% |
| Maryland | | | | |
| Montgomery County | 7,642 | 626 | 8.2% | -5.2% |
| Prince George's County | 5,681 | 653 | 11.5% | -11.5% |
| MD Regional Total | 13,323 | 1,279 | 9.6% | -8.5% |
| Virginia | | | | |
| Arlington County | 1,408 | 155 | 11.0% | -6.6% |
| Fairfax County | 5,113 | 759 | 14.8% | -5.5% |
| Loudoun County | 899 | 133 | 14.8% | -13.6% |
| Prince William County | 2,847 | 286 | 10.0% | -- |
| City of Alexandria | 769 | 104 | 13.5% | -9.6% |
| City of Fairfax | 196 | 23 | 11.7% | -30.3% |
| City of Falls Church | 196 | 10 | 5.1% | -16.7% |
| City of Manassas | 232 | 44 | 19.0% | 46.7% |
| City of Manassas Park | 33 | 4 | 12.1% | 0.0% |
| Northern Virginia Total | 11,693 | 1,518 | 13.0% | -6.8% |
| Washington Metro Regional Total | 30,437 | 2,878 | 9.5% | -20.1% |
| National Parks in Region | 747 | 68 | 9.1% | -- |
| Regional Total Adjusted | 31,184 | 2,946 | 8.7% | -- |

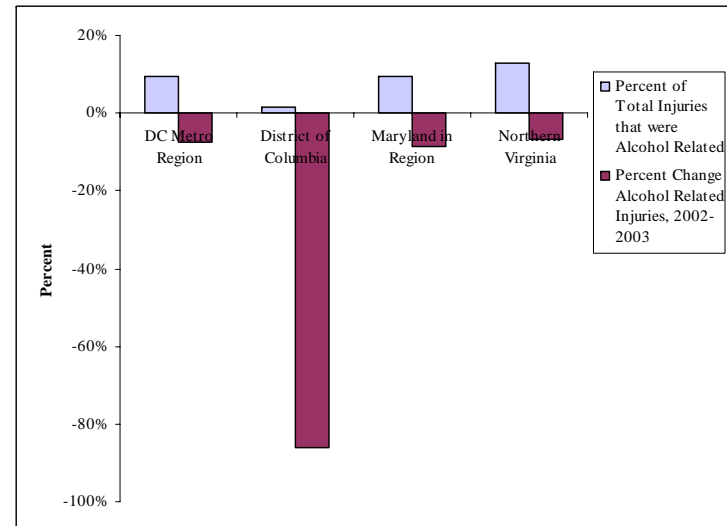
Source: Jurisdictional contacts, see specific contact in Methodology

^Percentage change calculation does not include 2003 or 2004 data for DC



**Figure 13A: SNAPSHOT!
Number of Total and Alcohol-Related Motor Vehicle Injuries, By Region, 2004**

**Figure 13B: SNAPSHOT!
Percentage of Injuries: Alcohol-related and change, 2003-2004**



TRAFFIC ARRESTS

Washington Metro Region

Alcohol-related arrests increased slightly across the Washington Metro Region in 2004. Importantly, the percentage of fatalities, crashes and injuries related to alcohol use all decreased over the past year.

Alcohol-related arrests increased across the Washington Metro Region in 2004.

The Washington Metro Region reported 14,092 alcohol-related driving arrests this past year. This represents an increase of 0.4% compared with 2003. Though an improvement over last year, 2004 arrests were still significantly lower than in 2002 (15,745), and the number of arrests are down 7.7% since 1994.

The arrest of people under the age of 21 years represents 3.2% of the overall arrests (454 of 14,092 arrests). This represents a significant increase in the percentage of juvenile arrests over last year (1.1%). Caution must be used in analysis of data on juveniles due to inconsistency in definitions, recording and maintenance of data within and between jurisdictions.

Regional Jurisdictions

District of Columbia

The District of Columbia reported an increase in drunk driving arrests compared with 2003. This is the second year in a row where increases were reported, reversing a trend of 8 years prior to that.

Drunk driving arrests increased for the 2nd straight year in the District of Columbia.

Specifically, the District saw an increase of 4.% in alcohol-related traffic arrests in 2004 compared with 2003. At the same time there have been significant decreases in alcohol-related fatalities (-67.6). Overall, there were 41.2% fewer arrests in 2003 than in 1995.

Montgomery and Prince George's Counties, Maryland

The Maryland counties, and Montgomery County in particular, reported the greatest increase in drunk driving arrests of all jurisdictions in the Washington Metro Region. This is a notable change in trend given that last year (2003) the Maryland region reported a 32% decrease in arrests.

The Maryland counties saw a 14.8% increase in alcohol-related driving arrests.

The Maryland counties saw a 14.8% increase in alcohol-related driving arrests compared with 2003. Both Montgomery and Prince George's County reported increases (17.7% and 9.1% respectively). Arrests for the region since 1994 have decreased 5.4%.

Northern Virginia

Northern Virginia reported a decrease in the number of alcohol-related driving arrests over the past year. Again the regional total does not tell the full story as individual jurisdictions had widely varying experiences. The percent change in arrests from 2003 to 2004 ranged from an extreme decrease in the City of Manassas Park (-43.7%) to a relatively high 13.3% increase in Loudoun County.

The Northern VA regional data does not tell the full story as individual jurisdictions had widely varying experiences.

Northern Virginia saw a 9.5% decrease in drunk driving arrests in the past year, though compared to 1994, arrests have increased 7.7%. The counties of Arlington, Fairfax and Prince William, and the cities of Alexandria, Manassas and Manassas Park all saw decreases in arrests this year. Loudoun County and the City of Fairfax, however, both reported notable increases in arrests.

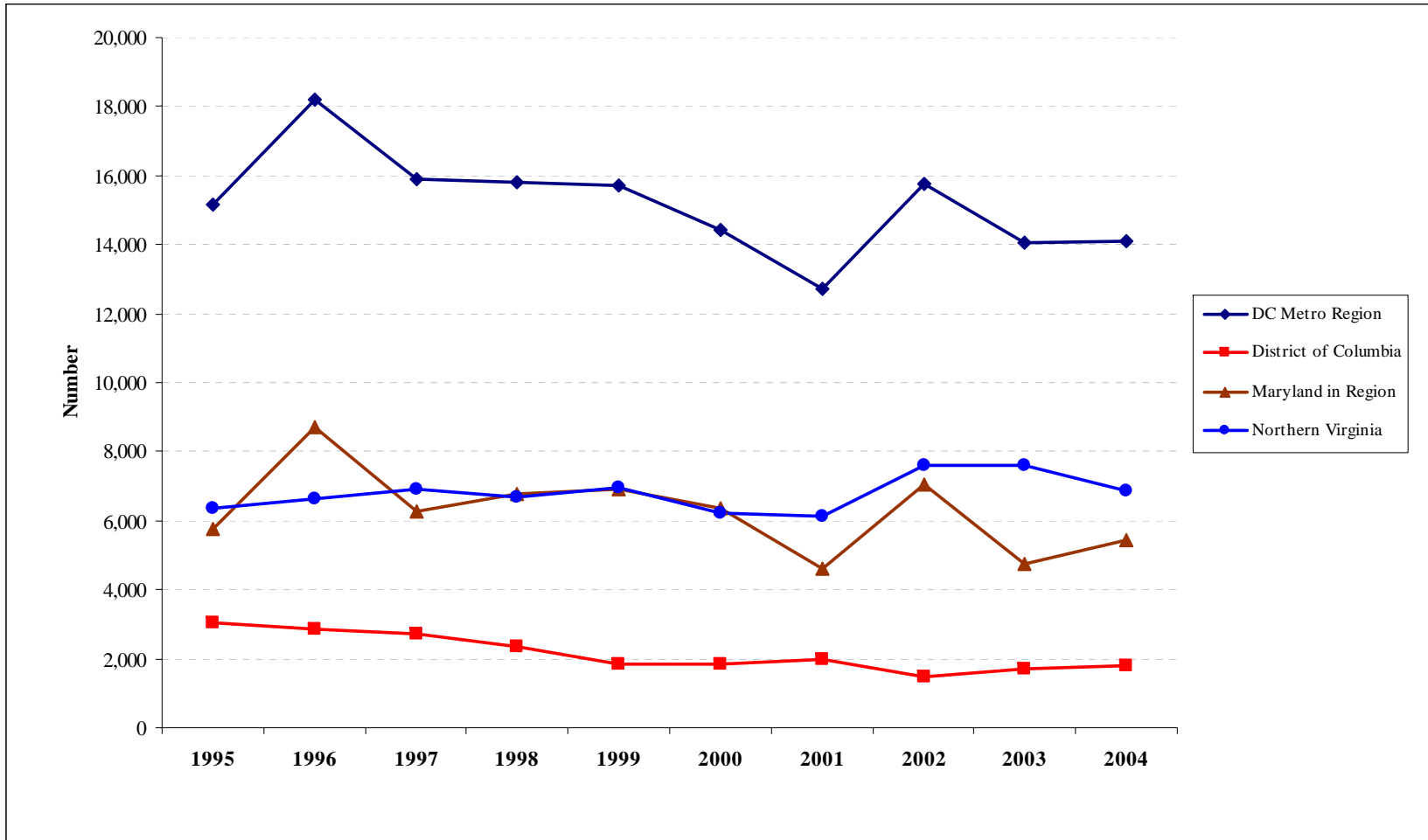
Table 14: Total Alcohol Related Driving Arrests by Jurisdiction, 1995-2004

| | 1995 | 1996 | 1997 | 1998 | 1999 | 2000 | 2001 | 2002 | 2003 | 2004 | Percent Change | |
|--|----------------|----------------|---------------|---------------|---------------|---------------|---------------|---------------|---------------|---------------|----------------|---------------|
| | | | | | | | | | | | 2003- 2004 | 1995- 2004 |
| District of Columbia | 3,025 | 2,854 | 2,714 | 2,350 | 1,828 | 1,850 | 1,967 | 1,492 | 1,711 | 1,780 | 4.0% | -41.2% |
| Maryland | | | | | | | | | | | | |
| Montgomery County | 3,407 | 4,168 | 3,847 | 4,445 | 4,599 | 4,436 | 3,420 | 3,151 | 3,148 | 3,705 | 17.7% | 8.7% |
| Prince George's County | 2,354 | 4,553 | 2,400 | 2,321 | 2,315 | 1,933 | 1,199 | 3,877 | 1,598 | 1,743 | 9.1% | -26.0% |
| MD Regional Total | 5,761 | 8,721 | 6,247 | 6,766 | 6,914 | 6,369 | 4,619 | 7,028 | 4,746 | 5,448 | 14.8% | -5.4% |
| Virginia | | | | | | | | | | | | |
| Arlington County | 890 | 1,041 | 1,027 | 1,037 | 921 | 817 | 625 | 696 | 715 | 547 | -23.5% | -38.5% |
| Fairfax County | 2,714 | 3,075 | 3,033 | 2,754 | 2,858 | 2,475 | 2,451 | 2,969 | 3,350 | 2,861 | -14.6% | 5.4% |
| Loudoun County | 447 | 360 | 272 | 220 | 304 | 386 | 519 | 816 | 682 | 773 | 13.3% | 72.9% |
| Prince William County | 1,313 | 1,250 | 1,461 | 1,635 | 1,967 | 1,517 | 1,571 | 1,525 | 1,656 | 1,621 | -2.1% | 23.5% |
| Alexandria City | 528 | 455 | 420 | 394 | 346 | 293 | 343 | 427 | 476 | 394 | -17.2% | -25.4% |
| Fairfax City | 414 | 386 | 357 | 325 | 269 | 208 | 179 | 244 | 242 | 273 | 12.8% | -34.1% |
| Falls Church City | 66 | 74 | 54 | 53 | 47 | 84 | 74 | 45 | 40 | 40 | 0.0% | -39.4% |
| Manassas City | - | - | 214 | 209 | 208 | 349 | 276 | 348 | 298 | 284 | -4.7% | - |
| Manassas Park City | - | - | 77 | 46 | 45 | 92 | 107 | 155 | 126 | 71 | -43.7% | - |
| Northern Virginia Total | 6,372* | 6,641* | 6,915 | 6,673 | 6,965 | 6,221 | 6,145 | 7,225 | 7,585 | 6,864 | -9.5% | 7.7% |
| Washington Metro Regional Total | 15,158* | 18,216* | 15,876 | 15,789 | 15,707 | 14,440 | 12,731 | 15,745 | 14,042 | 14,092 | 0.4% | -7.0% |
| National Parks in Region | -- | -- | -- | -- | -- | -- | -- | 564 | -- | 839 | -- | -- |
| Regional Total Adjusted | -- | -- | -- | -- | -- | -- | -- | 16,309 | -- | 14,931 | -- | -- |

*Regional totals do not include jurisdictions with missing data.

Source: Jurisdictional contacts, see specific contact in Methodology

Figure 14: Total Alcohol-related Arrest Trends, All Ages, By Region, 1994-2004



NOTE: Data on persons under the age of 21 years is not consistently recorded or maintained within and between jurisdictions; caution must be used in drawing conclusions based on this data.

Table 15: Total Alcohol Related Driving Arrests of Juveniles and Adults by Jurisdiction, 2000-2004

| | 2000 | | | 2001 | | | 2002 | | | 2003 | | | 2004 | | |
|---|------------|--------------|---------------|------------|--------------|---------------|------------|--------------|---------------|------------|---------------|---------------|------------|---------------|---------------|
| | ≤ 18 years | > 18 years | Total | ≤ 18 years | > 18 years | Total | ≤ 18 years | > 18 years | Total | ≤ 18 years | > 18 years | Total | ≤ 18 years | > 18 years | Total |
| District of Columbia | | | 1,850 | 34 | 1,933 | 1,967 | 8 | 1,484 | 1,492 | 23 | 1,688 | 1,711 | 36 | 1,744 | 1,780 |
| Maryland | | | | | | | | | | | | | | | |
| Montgomery County* | 73 | 4,363 | 4,436 | 46 | 3,374 | 3,420 | 56 | 3,095 | 3,151 | 41 | 3,107 | 3,148 | 363 | 3,342 | 3,705 |
| Prince George's County# | 10 | 1,923 | 1,933 | | | 1,199 | | | 3,877 | 7 | 1,591 | 1,598 | 2 | 1,741 | 1,743 |
| MD Regional Total | 83 | 6,286 | 6,369 | | | 4,619 | | | 7,028 | 48 | 4,698 | 4,746 | 365 | 5,083 | 5,448 |
| Virginia | | | | | | | | | | | | | | | |
| Arlington County | 1 | 816 | 817 | 4 | 621 | 625 | 4 | 692 | 696 | 0 | 715 | 715 | 3 | 542 | 545 |
| Fairfax County | 41 | 2,434 | 2,475 | 32 | 2,419 | 2,451 | 49 | 2,920 | 2,969 | 54 | 3,296 | 3,350 | 20 | 2,841 | 2,861 |
| Loudoun County | 5 | 381 | 386 | 9 | 510 | 519 | 7 | 809 | 816 | -- | -- | 682 | 7 | 589 | 596 |
| Prince William County* | 26 | 1,491 | 1,517 | 31 | 1,540 | 1,571 | 19 | 1,506 | 1,525 | 16 | 1,640 | 1,656 | 18 | 1,903 | 1,921 |
| Alexandria City | 1 | 292 | 293 | 1 | 342 | 343 | 8 | 419 | 427 | 1 | 475 | 476 | 2 | 392 | 394 |
| Fairfax City | 2 | 206 | 208 | 1 | 178 | 179 | 4 | 240 | 244 | 3 | 239 | 242 | 1 | 272 | 273 |
| Falls Church City | 1 | 83 | 84 | 2 | 72 | 74 | 0 | 45 | 45 | 1 | 39 | 40 | 1 | 34 | 35 |
| Manassas City | 1 | 348 | 349 | 3 | 273 | 278 | 7 | 341 | 348 | 2 | 296 | 298 | 0 | 284 | 284 |
| Manassas Park City | 1 | 91 | 92 | 3 | 104 | 107 | 2 | 153 | 155 | 0 | 126 | 126 | 1 | 8 | 9 |
| Northern Virginia Total | 79 | 6,142 | 6,221 | 86 | 6,059 | 6,145 | 100 | 7,125 | 7,225 | 77 | 6,826 | 7,585 | 53 | 6,865 | 6,918 |
| National Parks in Region | -- | -- | -- | -- | -- | -- | -- | -- | -- | -- | -- | -- | 8 | 831 | 839 |
| Regional Total Adjusted | 79 | 6,142 | 6,221 | 86 | 6,059 | 6,145 | 100 | 7,125 | 7,225 | 77 | 6,826 | 11,105 | 61 | 7,696 | 7,757 |
| Washington Metro Regional Total^ | | | 14,440 | | | 12,731 | | | 15,745 | 148 | 13,212 | 14,042 | 462 | 14,523 | 14,985 |

^Washington Metro Regional totals for under and over age 18 years not included for years with missing juvenile data.

*Montgomery County data for persons under the age of 21 years determined to be driver.

#Prince George's County data reflects number of arrests for persons under the age of 24 years.

Source: Jurisdictional contacts, see specific contact in Methodology.

IMPACT ON OUR YOUTH

People under the age of 21 years constitute 30% of the United States population. In the Washington Metro Region, the population under 21 is over 27%. Youth in the young driving ages (15 to 21 years), constitute 8.6% of the U.S. and 7.6% of the Washington Metro Region's population.

Several jurisdictions were unable to provide data on youth for this report. Results are presented for the Washington Metro Region with the reminder that not all jurisdictions are represented.

Fatalities

16.1% of all juvenile traffic fatalities in the Washington Region were related to alcohol.

In the Washington Metro Region there was an increase of a single juvenile alcohol-related fatality reported in 2004 (from 9 fatalities in 2003 to 10 in 2004). Sixteen percent of juvenile fatalities in 2004 were alcohol-related. This includes youth who were driving, passengers, and pedestrians.

Crashes, Injuries, and Arrests

In 2004, juveniles were involved in 8% of all alcohol-related crashes in the Washington Metro Region.

In the Washington Metropolitan Region, youth under the age of 21 were involved in 8% of all alcohol-related crashes. Note that this does not include data from the District of Columbia and five Northern Virginia jurisdictions.

Data regarding youth injured in alcohol-related traffic injuries was unavailable from six jurisdictions. Of those reporting, 5.3% of injuries occurred in people under age 21 years.

With all jurisdictions reporting, 3.2% of drivers arrested in 2004 for alcohol impaired driving in the Region were under age.

Table 16: Motor Vehicle Fatalities for Persons Under 21 Years of Age By Jurisdiction, 2003-2004

| | 2003 | | | 2004 | | | Percent Change 2003-2004 | |
|--------------------------------------|-----------------------|-----------------------------------|--|-----------------------|-----------------------------------|--|-----------------------------|-------------------------------|
| | Total Fatalities | Alcohol- related Fatalities | % of Total Juvenile Fatalities that were Alcohol-related | Total Fatalities | Alcohol- related Fatalities | % of Total Juvenile Fatalities that were Alcohol-related | Total Fatalities | Alcohol-related Fatalities |
| District of Columbia | 21 | 1 | 4.8% | 11 | 1 | 9.1% | -47.6% | 0.0% |
| Maryland | | | | | | | | |
| Montgomery County | 3* | 1* | | 15 | 5 | | | |
| Prince George's County | 29 [#] | 4 [#] | | 22 | 2 | | | |
| MD Regional Total | 32 | 5 | 15.6% | 37 | 7 | 18.9% | 15.6% | 40.0% |
| Virginia | | | | | | | | |
| Arlington County | 0 | 0 | | 0 | 0 | | | |
| Fairfax County | 12 | 1 | | 12 | 2 | | | |
| Loudoun County | 1 | 0 | | -- | -- | | | |
| Prince William County | 3 | 2 | | 2 | -- | | | |
| City of Alexandria | 0 | 0 | | 0 | 0 | | | |
| City of Fairfax | 1 | 0 | | 0 | 0 | | | |
| City of Falls Church | 0 | 0 | | 0 | 0 | | | |
| City of Manassas | -- | 0 | | 0 | 0 | | | |
| City of Manassas Park | 0 | 0 | | 0 | 0 | | | |
| Northern Virginia Total | 17[^] | 3 | 17.6% | 14 | 2 | 14.3% | -17.6% | -33.3% |
| Washington Metro Region Total | 70[^] | 9 | 12.9% | 62[^] | 10[^] | 16.1% | -11.4% | 11.1% |
| National Parks in Region | -- | -- | -- | 16 | 0 | 0.0% | -- | -- |
| Regional Total Adjusted | 70 | 9 | 12.9% | 78[^] | 10[^] | 12.8% | -17.6% | -33.3% |

[^]Regional Totals do not include jurisdictions with missing data.

*Montgomery County data for persons under the age of 21 years determined to be driver.

[#]Prince George's County data represents persons under the age of 24 years.

Source: Jurisdictional contacts, see specific contact in Methodology

NOTE: Data on persons under the age of 21 years is not consistently recorded or maintained within and between jurisdictions; Caution must be used in drawing conclusions based on this data.

Table 17: Alcohol-Related Motor Vehicle Injuries for Persons Under 21 Years of Age, 2003-2004

| | 2003 | | 2004 | |
|--|------------------------|--|------------------------|--|
| | Number of Injuries | Percentage of Alcohol-related Injuries, All Ages | Number of Injuries | Percentage of Alcohol-related Injuries, All Ages |
| District of Columbia | 194 | 33.7% | -- | -- |
| Maryland | | | | |
| Montgomery County | 70* | | 52 | |
| Prince George's County | 163 [#] | | 33 | |
| MD Regional Total | 233 | 16.7% | 85 | 6.6% |
| Virginia | | | | |
| Arlington County | - | | -- | |
| Fairfax County | - | | 58 | |
| Loudoun County | - | | -- | |
| Prince William County | 25 | | -- | |
| City of Alexandria | 0 | | 3 | |
| City of Fairfax | 2 | | -- | |
| City of Falls Church | 1 | | 2 | |
| City of Manassas | 0 | | -- | |
| City of Manassas Park | - | | 1 | |
| VA Regional Total | 28[^] | 1.7% | 64 | 4.2% |
| Washington Metro Regional Total | 455[^] | 12.6% | 149[^] | 5.3% |
| National Parks in Region | -- | -- | 8 | 11.8% |
| Regional Total Adjusted | -- | -- | 157[^] | 5.5% |

⁺Data from 2002 only available at regional level. Completeness of data unknown.

[^]Regional Totals do not include jurisdictions with missing data.

*Montgomery County data for persons under the age of 21 years determined to be driver and "at fault" for accident

[#]Prince George's County data represents persons under the age of 24 years.

Source: Jurisdictional contacts, see specific contact in Methodology.

Table 18: Alcohol-related Motor Vehicle Arrests for Persons Under 21 Years of Age By Region, 2003-2004

| | 2003 | | 2004 | |
|---------------------------------|-------------------|---|-------------------|---|
| | Number of Arrests | Percentage of Alcohol-related Arrests, All Ages | Number of Arrests | Percentage of Alcohol-related Arrests, All Ages |
| District of Columbia | 23 | 1.3% | 36 | 2.0% |
| Maryland | | | | |
| Montgomery County | 41* | | 363 | |
| Prince George's County | 7# | | 2 | |
| MD Regional Total | 0 | 1.0% | 365 | 6.7% |
| Virginia | | | | |
| Arlington County | 0 | | 3 | |
| Fairfax County | 54 | | 20 | |
| Loudoun County | -- | | 7 | |
| Prince William County* | 16 | | 18 | |
| City of Alexandria | 1 | | 2 | |
| City of Fairfax | 3 | | 1 | |
| City of Falls Church | 1 | | 1 | |
| City of Manassas | 2 | | 0 | |
| City of Manassas Park | 0 | | 1 | |
| VA Regional Total | 77^ | 1.0% | 53 | 0.8% |
| Wash Metro Region Total | 148^ | 1.1% | 454 | 3.2% |
| National Parks in Region | -- | -- | 8 | 1.0% |
| Regional Total Adjusted | -- | -- | 462 | 3.1% |

^Regional Totals do not include jurisdictions with missing data.

*Montgomery County data for persons under the age of 21 years determined to be driver.

#Prince George's County data represents persons under the age of 24 years.

Source: Jurisdictional contacts, see specific contact in Methodology.

NOTE: Data on persons under the age of 21 years is not consistently recorded within and between jurisdictions; caution must be used in drawing conclusions based on this data.

Table 19A: SNAPSHOT! Motor Vehicle Fatalities for Persons Under 21 Years of Age By Region, 2004

| | Total Juvenile Fatalities | Alcohol- Related Fatalities | % of Total Juvenile Fatalities that were Alcohol- Related | Percent Change Alcohol-Related Juvenile Fatalities, 2003- 2004 | Percentage of Alcohol-Related Fatalities, All Ages |
|--|---------------------------------|-----------------------------------|---|--|---|
| District of Columbia | 11 | 1 | 9.1% | -47.6% | 24.4% |
| Maryland | | | | | |
| Montgomery County | 15 | 5 | | | |
| Prince George's County | 22 | 2 | | | |
| MD Regional Total | 37 | 7 | 18.9% | 15.6% | 29.5% |
| Virginia | | | | | |
| Arlington County | 0 | 0 | | | |
| Fairfax County | 12 | 2 | | | |
| Loudoun County | -- | -- | | | |
| Prince William County* | 2 | -- | | | |
| City of Alexandria | 0 | 0 | | | |
| City of Fairfax | 0 | 0 | | | |
| City of Falls Church | 0 | 0 | | | |
| City of Manassas | 0 | 0 | | | |
| City of Manassas Park | 0 | 0 | | | |
| Northern Virginia Total | 14 | 2 | 14.3% | -17.6% | 4.5% |
| Washington Metro Regional Total | 62[^] | 10[^] | 16.1% | -11.4% | 8.8% |
| National Parks in Region | 0 | 0 | 0.0% | -- | -- |
| Regional Total Adjusted | 62[^] | 10[^] | 16.1% | -11.4% | 8.8% |

[^]Regional totals do not include jurisdictions with missing data.

*Montgomery County data for persons under the age of 21 years determined to be driver and "at fault" for accident

#Prince George's County data represents persons under the age of 24 years

Source: Jurisdictional contacts, see specific contact in Methodology

NOTE: Data on persons under the age of 21 years is not consistently recorded within and between jurisdictions; caution must be used in drawing conclusions based on this data.

Table 19B: SNAPSHOT! Alcohol Related Crashes, Injuries, and Arrests for Persons Under 21 Years of Age By Region, 2004

| | Crashes | Percentage of Alcohol-related Crashes | Injuries | Percentage of Alcohol-related Injuries | Arrests | Percentage of Alcohol-related Arrests |
|--|-------------|---------------------------------------|-------------|--|------------|---------------------------------------|
| District of Columbia | -- | -- | -- | -- | 36 | 2.0% |
| Maryland | | | | | | |
| Montgomery County | 111* | | 52 | | 363 | |
| Prince George's County | 84# | | 33 | | 2 | |
| MD Regional Total | 195 | 9.1% | 85 | 6.6% | 365 | 6.7% |
| Virginia | | | | | | |
| Arlington County | -- | | -- | | 3 | |
| Fairfax County | 160 | | 58 | | 20 | |
| Loudoun County | -- | | -- | | 7 | |
| Prince William County | -- | | -- | | 18 | |
| City of Alexandria | 9 | | 3 | | 2 | |
| City of Fairfax | -- | | -- | | 1 | |
| City of Falls Church | 2 | | 2 | | 1 | |
| City of Manassas | -- | | -- | | 0 | |
| City of Manassas Park | 0 | | 1 | | 1 | |
| Northern Virginia Total | 171 | 7.0% | 64 | 4.2% | 53 | 0.8% |
| Washington Metro Regional Total | 366^ | 8.0% | 149^ | 5.3% | 454 | 3.2% |
| National Parks in Region | 5 | 4.5% | 8 | 11.8% | 8 | 1.0% |
| Regional Total Adjusted | 371^ | 7.9% | 157^ | 5.5% | 462 | 3.1% |

^Regional totals do not include jurisdictions with missing data.

*Montgomery County data for persons under the age of 21 years determined to be driver and "at fault" for accident.

#Prince George's County data represents persons under the age of 24 years.

Source: Jurisdictional contacts, see specific contact in Methodology.

SUMMARY

The Washington Metro Region has seen alcohol-related motor vehicle fatalities decrease for the first time since 1998. Reported arrests for impaired driving increased slightly in 2004, though in general the trend has been decreasing arrests since 1996 (with the exception of 2002). The number of alcohol-related crashes decreased for the second straight year. Standardization of information collection systems by police agencies would improve comparability between jurisdictions in the future.

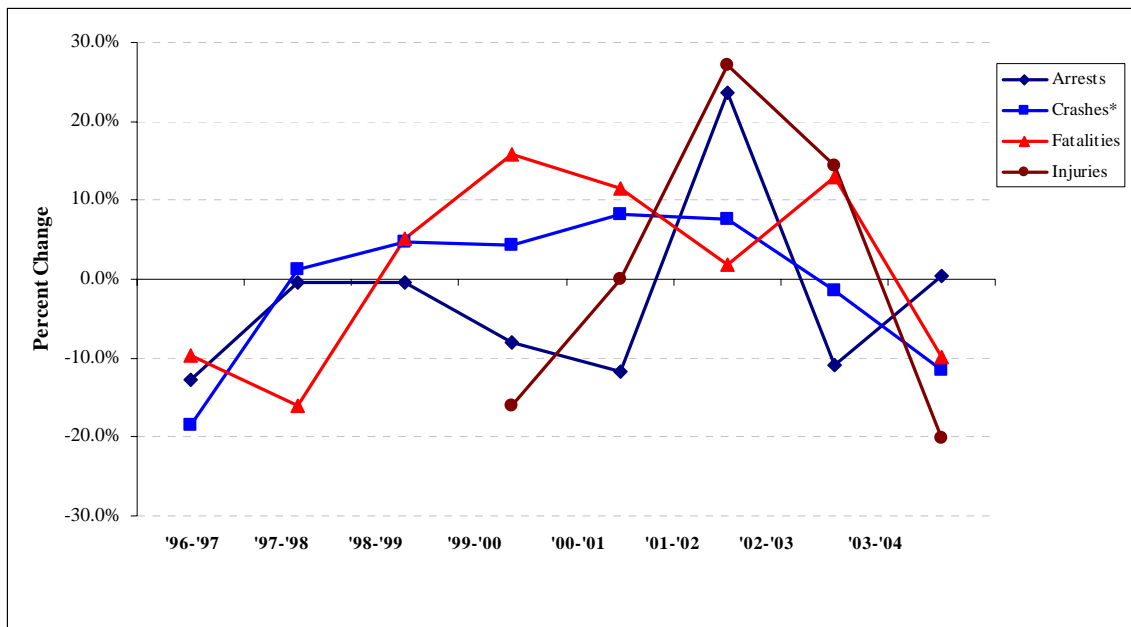
Table 20: Washington Metro Region Percentage Change in Alcohol-related Incidents by Year, 1996-2004

| | '96-'97 | '97-'98 | '98-'99 | '99-'00 | '00-'01 | '01-'02 | '02-'03 | '03-'04 |
|-------------------|---------|---------|---------|---------|---------|---------|---------|---------|
| Arrests | -12.8% | -0.5% | -0.5% | -8.1% | -11.8% | 23.7% | -10.8% | 0.4% |
| Crashes | -18.5% | 1.3% | 4.7% | 4.4% | 8.3% | 7.7% | -1.4%* | -11.6% |
| Fatalities | -9.7% | -16.1% | 5.1% | 15.9% | 11.6% | 1.9% | 13.0% | -9.8% |
| Injuries | - | - | - | -16.0% | -6.8%* | 27.1% | 14.3% | -20.1% |

*District of Columbia data excluded due to missing values.

Source: Jurisdictional contacts, see specific contact in Methodology.

Figure 20: Washington Metro Region Percentage Change in Alcohol-related Incidents by Year, 1996-2004



The District of Columbia saw a significant decrease in alcohol-related fatalities in 2004 after an alarming increase in 2003. The number of alcohol-related injuries also decreased sharply, and arrests in the District increased for a second straight year.

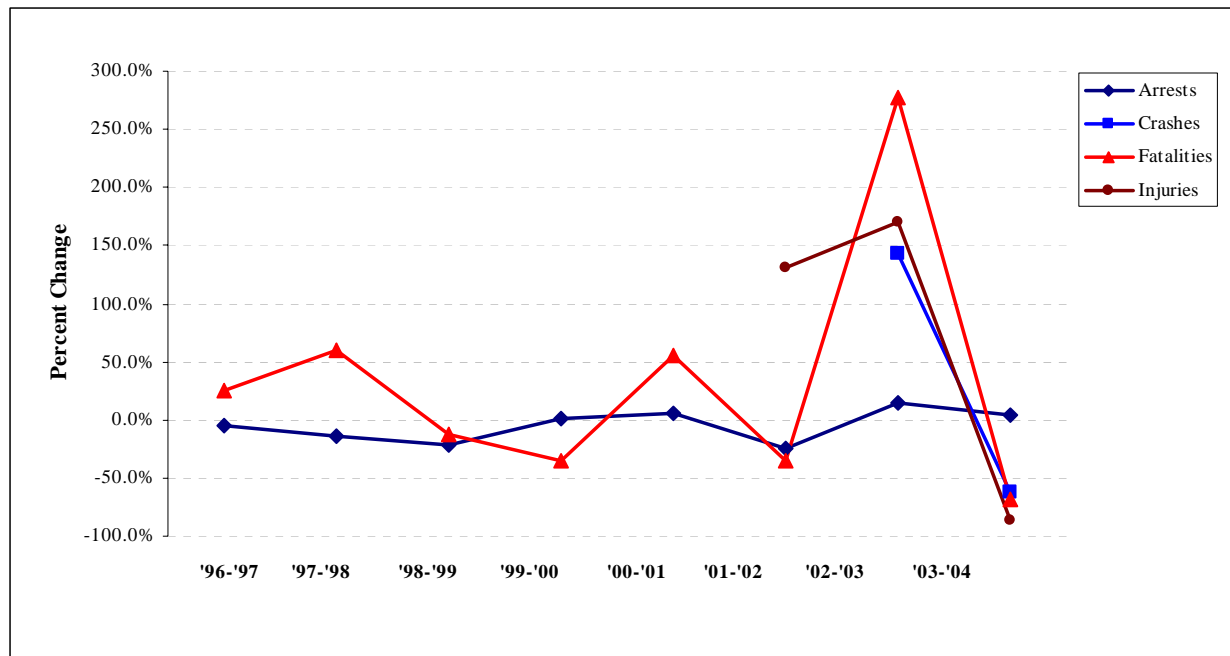
Table 21: District of Columbia Percentage Change in Alcohol-related Incidents by Year, 1996-2004

| | '96-'97 | '97-'98 | '98-'99 | '99-'00 | '00-'01 | '01-'02 | '02-'03 | '03-'04 |
|-------------------|---------|---------|---------|---------|---------|---------|---------|---------|
| Arrests | -4.9% | -13.4% | -22.2% | 1.2% | 6.3% | -24.1% | 14.7% | 4.0% |
| Crashes | - | - | - | - | - | - | 143.2%* | -62.6% |
| Fatalities | 25.0% | 60.0% | -12.5% | -35.7% | 55.6% | -35.7% | 277.8% | -67.6% |
| Injuries | - | - | - | - | - | 131.5% | 170.4% | -85.9% |

*Percentage change 2001 to 2003.

Source: Jurisdictional contacts, see specific contact in Methodology.

Figure 21: District of Columbia Percentage Change in Alcohol-related Incidents by Year, 1996-2004



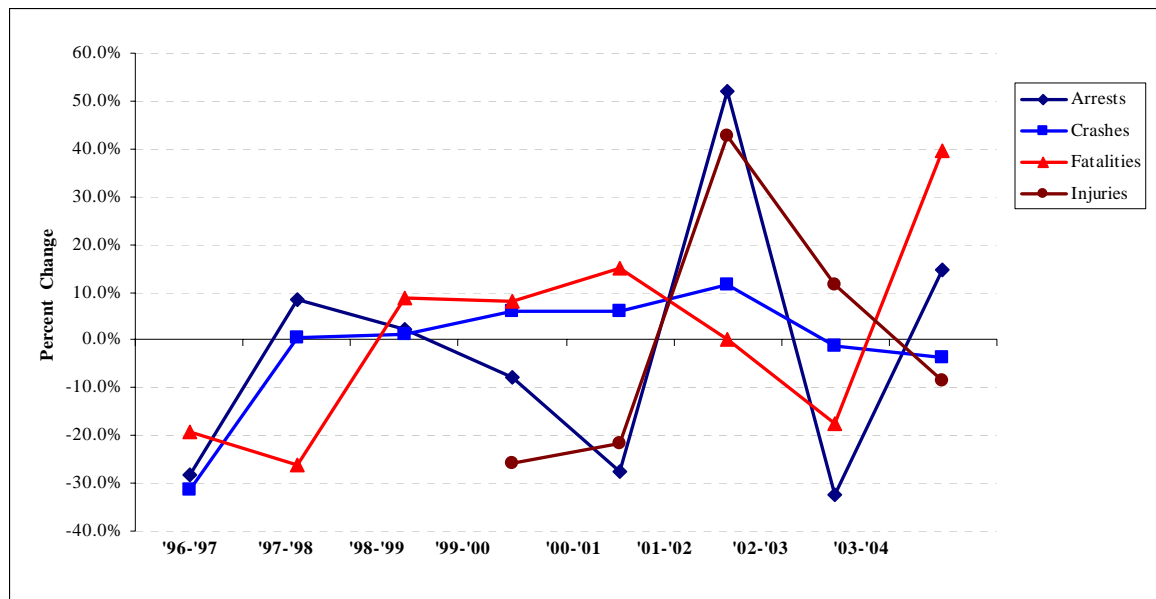
Montgomery and Prince George's counties in Maryland have seen extreme fluctuations in the number of arrests for impaired driving since 1997. This year saw an increase in arrests. The number of fatalities and injuries have also fluctuated substantially over the past eight years.

Table 22: Montgomery and Prince George's Counties, Maryland, Percentage Change in Alcohol-related Incidents by Year, 1996-2004

| | '96-'97 | '97-'98 | '98-'99 | '99-'00 | '00-'01 | '01-'02 | '02-'03 | '03-'04 |
|-------------------|---------|---------|---------|---------|---------|---------|---------|---------|
| Arrests | -28.4% | 8.3% | 2.2% | -7.9% | -27.5% | 52.2% | -32.5% | 14.8% |
| Crashes | -31.4% | 0.4% | 1.3% | 6.0% | 6.0% | 11.7% | -1.1% | -3.8% |
| Fatalities | -19.3% | -26.1% | 8.8% | 8.1% | 15.0% | 0.0% | -17.4% | 39.5% |
| Injuries | - | - | - | -25.8% | -21.8% | 42.8% | 11.5% | -8.5% |

Source: Jurisdictional contacts, see specific contact in Methodology.

Figure 22: Montgomery and Prince George's Counties, Maryland, Percentage Change in Alcohol-related Incidents by Year, 1996-2004



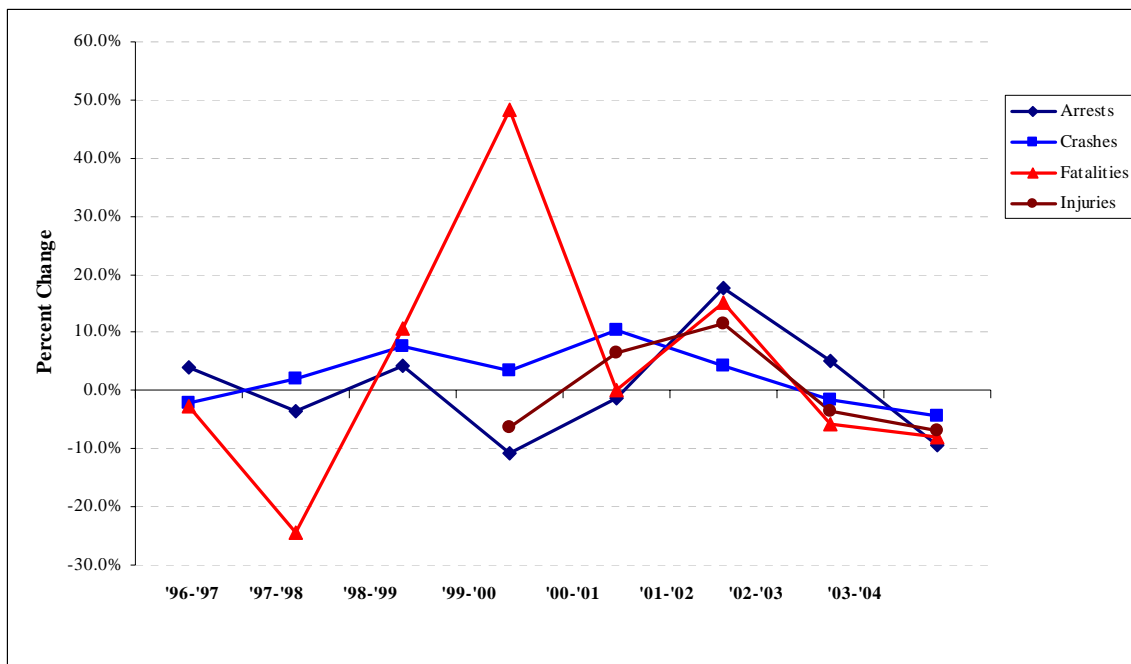
Northern Virginia reported a decrease in the number of arrests between 2003 and 2004. Despite this, the number of alcohol-related crashes, injuries, and fatalities also dropped.

Table 23: Northern Virginia Percentage Change in Alcohol-related Incidents by Year, 1996-2004

| | '96-'97 | '97-'98 | '98-'99 | '99-'00 | '00-'01 | '01-'02 | '02-'03 | '03-'04 |
|-------------------|---------|---------|---------|---------|---------|---------|---------|---------|
| Arrests | 4.1% | -3.5% | 4.4% | -10.7% | -1.2% | 17.6% | 5.0% | -9.5% |
| Crashes | -2.2% | 2.1% | 7.5% | 3.3% | 10.3% | 4.4% | -1.6% | -4.4% |
| Fatalities | -2.6% | -24.3% | 10.7% | 48.4% | 0.0% | 15.2% | -5.7% | -8.0% |
| Injuries | - | - | - | -6.4% | 6.4% | 11.6% | -3.4% | -6.8% |

Source: Jurisdictional contacts, see specific contact in Methodology.

Figure 23: Northern Virginia Percentage Change in Alcohol-related Incidents by Year, 1996-2004



FINAL COMMENTS

It is heartening to note that the total number of fatalities, crashes and injuries related to alcohol use all decreased in the Washington Metro Region over the past year. However, this good news is tempered by the fact that the percentage of fatalities that were alcohol-related continues to rise.

Efforts continue both nationwide and locally to curb alcohol-related motor vehicle crashes, injuries and fatalities. Although the relationship between drunk driving arrests and alcohol-related fatalities, injuries and crashes is not clearly understood, the Washington Metro Region did report a small increase in the number of impaired driving arrests. It is important to note that the number of arrests in the region this year was down significantly from 2002. Regarding alcohol-related fatalities, while the Washington Metro Region saw an overall decrease, there were significant differences within the region; the District of Columbia reported a 67.6% decrease in alcohol-related fatalities, while the Maryland Region reported an increase of 39.5%.

In 2004, 8.8% of all alcohol-related motor vehicle fatalities occurred in people under 21 years of age and alcohol-related fatalities represented 16.1% of all traffic fatalities for persons under 21. Both these percentages have increased since last year.

To further evaluate causes of increased problems in the most populated core of the Washington Metro Region, it will be important to identify jurisdictional variance in road use. Although it is outside the scope of this report, information on the impact of mass transit options, commuting to social gatherings within the city, as well as density and type of roadways would provide valuable assistance in evaluating the problem and creating effective programs.

ACKNOWLEDGEMENTS

The Institute for Community Health at Virginia Tech acknowledges that a report of this magnitude requires the assistance of many. We wish to thank the following individuals and organizations for their assistance with, and contributions to, this *How Safe Are Our Roads?* report.

Kurt Erickson and Emily DeTitta
Washington Regional Alcohol Program

Nancy Rea
Metropolitan Washington Council on Governments

Nationally, Alcohol-related traffic fatalities have decreased by 44 percent since 1980. Still today, someone dies about every 30 minutes in an alcohol-related crash.

From the Washington Metro Region jurisdictions

District of Columbia

Capt. Patrick Burke, Metropolitan Police Department
Yusuf Aden, District Department of Transportation
Mr. Arthur Pettiford, United States Park Police

Maryland

Ms. Ida Williams, Maryland State Police Department
Ms. Dana Gigliotti, Prince George's County Police Department
Ms. Felicia Hobbs, Montgomery County Department of Police

Northern Virginia

Ms. Sheila Taylor, Virginia State Police Dept.
Mr. Dean Montanye, Arlington County Police Dept.
Mr. Jerry Stemler & Ms. Emily Yantz-Houser, Fairfax County Police Dept.
Lt. Rudy Landon, Loudoun County Sheriff's Office
Sgt. Bobby Bardon & Sgt. Dennis Mangan, Prince William County Police Dept.
Lt. Paul Story & Sgt. James Bartlett, City of Alexandria Police Dept.
Lt. M.A. Rizzo, City of Fairfax Police Dept.
Capt. Matthew Sergeant, City of Falls Church Police Dept.
Sgt. Brian Larkin, City of Manassas Police Dept.
Sgt. Karen Barton, City of Manassas Park Police Dept.

Definition of Terms

Terms Related to the Data

Alcohol-Related Crash – A motor vehicle crash is considered to alcohol-related if at least one driver or non-occupant (such as a pedestrian or pedalcyclist) involved in the crash is determined to have a Blood Alcohol Concentration (BAC) of 0.01 gram per deciliter (G/dl) or higher.

Alcohol-Related Fatality – Any fatality that occurs in an alcohol-related crash.

Alcohol-Related Injury – Any injury that occurs in an alcohol-related crash.

Percent of Fatalities that are Alcohol-Related - These percentages represent the ratio of alcohol-related fatalities to the number of total fatalities as expressed below:

$$\frac{\text{Alcohol-Related Fatalities (year)}}{\text{Total Fatalities (year)}} \times 100$$

Percent of Crashes that are Alcohol-Related - These percentages represent the ratio of alcohol-related crashes to the number of total crashes as expressed below:

$$\frac{\text{Alcohol-Related Crashes (year)}}{\text{Total Crashes (year)}} \times 100$$

Percent of Injuries that are Alcohol-Related - These percentages represent the ratio of alcohol-related injuries to the number of total injuries as expressed below:

$$\frac{\text{Alcohol-Related Injuries (year)}}{\text{Total Injuries (year)}} \times 100$$

Percent Change – This report contains much discussion of percentage change. This analysis is included to show fluctuations from year to year and to provide an added perspective. Percent change is calculated by taking the number (of fatalities, crashes, injuries, arrests, etc) for the current year, minus the number for the previous year, then dividing the difference by the number for the previous year and multiplying the dividend by 100.

General Terms

Blood Alcohol Concentration (BAC) - Blood Alcohol Concentration is the amount of alcohol in the bloodstream. It is measured in percentages. For instance, having a BAC of 0.10 percent means that a person has 1 part alcohol per 1,000 parts blood in the body. BAC can be measured by breath, blood, or urine tests. BAC measurement is especially important for determining the role of alcohol in motor vehicle related fatalities, crashes and injuries.

Drunk Driving - A general reference to those criminal cases that are called DUI, DWI, OUI, OWI, DUUI, DWAI, or other acronyms. They generally describe two types of cases: first, where the driver is sufficiently impaired by alcohol, drugs, or a combination of the two, that the driver cannot drive safely. Second, "drunk driving" relates to those cases where someone is above that state's legal limit, usually .08, no matter how safely the person is driving.

Juvenile – A person under the age of 21 years, or as defined in the local jurisdiction as under the age of majority. It is important to note that for purposes of this report, the age a person is defined is not consistent between local jurisdictions.

National Highway Traffic Safety Administration (NHTSA) - The agency within the United States Department of Transportation that administers traffic safety programs. NHTSA's duties include funding studies on field sobriety tests and training law enforcement officers in the administration of the standardized field sobriety test battery.

U.S. Census Bureau – A bureau of the Commerce Department responsible for taking the census and providing demographic information and analyses about the population of the United States

Vehicle – A motor vehicle, car, truck, motorcycle. In some states, a DUI, DWI or drunk driving conviction can result from driving a bicycle, riding a horse, driving a snowmobile, or even a motorized wheelchair.

Washington D.C. Metropolitan Region – For purposes of this report, the Washington D.C. Metropolitan Region consists of 12 jurisdictions within the District of Columbia, Maryland and Northern Virginia. For a listing of the jurisdictions, refer to page 5.

How Safe Are Our Roads?

Prepared by
Heidi Sung

Institute for Community Health
Virginia Tech
School of Public and International Affairs
200 Architecture Annex
Blacksburg, Virginia 24061

540-231-2451