



Equity, Resilience, and Environmental Justice

DR MELISSA KEELEY
GEORGE WASHINGTON UNIVERSITY





Urban Sustainability in the US

Cities Take Action

Melissa Keeley and
Lisa Benton-Short



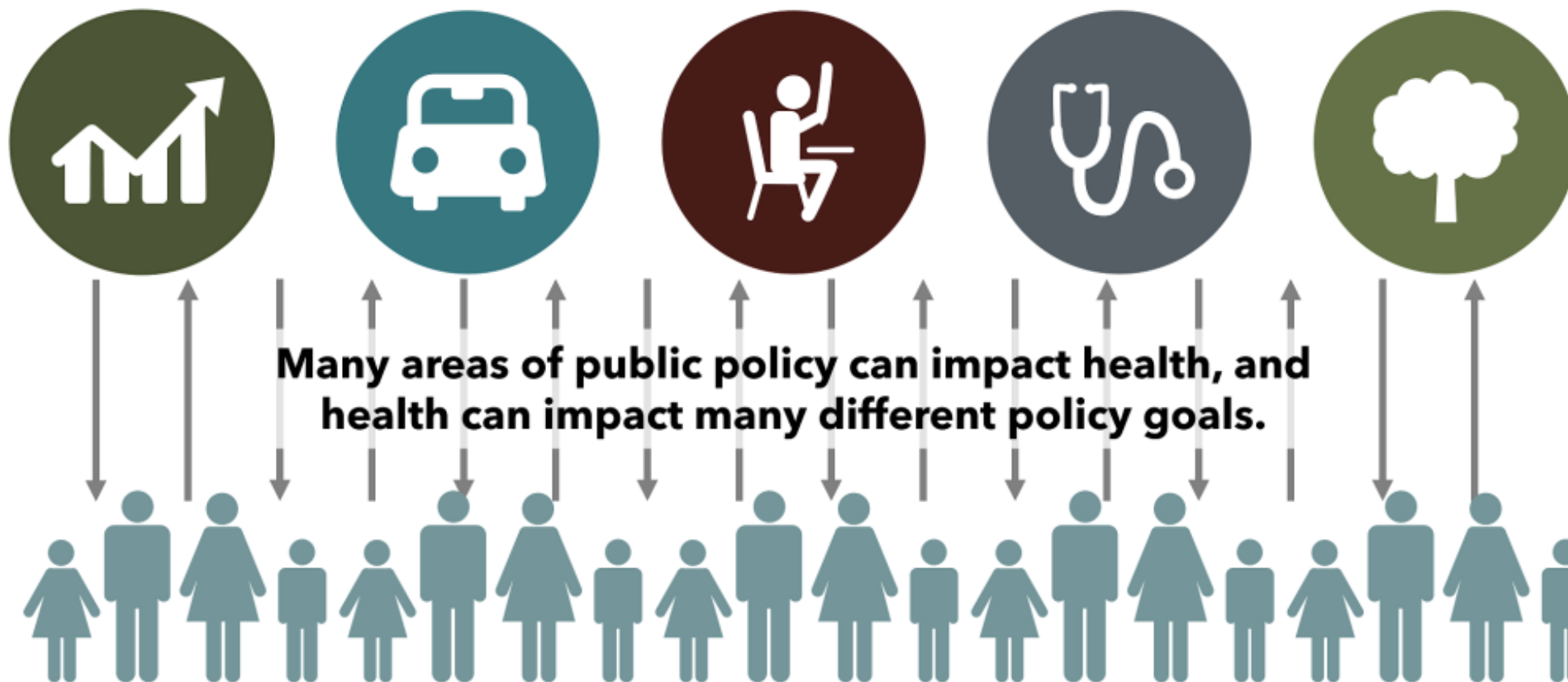
Outline

- Equity-in-All
- Mapping
- Inter-departmental communication specialists
- Community Building=Resilience
- Bioretention and Community



Equity-in-All

HEALTH IN ALL POLICIES



Many areas of public policy can impact health, and health can impact many different policy goals.


GOAL 2: Protect, restore, and expand land ecosystems.

TARGET 2: By 2032, restore, protect, create, or improve 2,000 acres of critical land habitat.

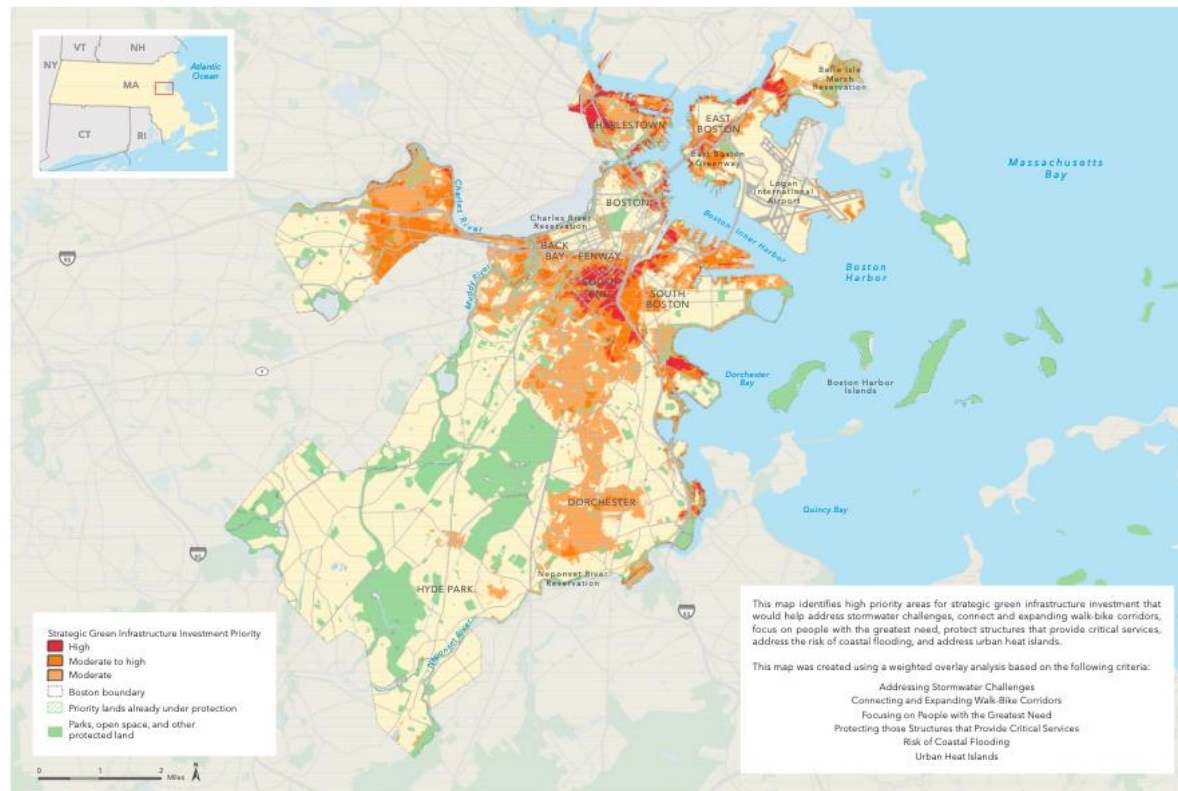
NA2.1 Plant and maintain 10,500 new trees per year in priority areas to achieve 40% tree canopy cover by 2032.	Ongoing	DDOT	DGS, DOEE, DPR, OCTO	
NA2.2 Remove invasive plants on 500 acres of critical habitat based on a strategic management plan.	Medium term	DOEE	DGS	
NA2.3 Create or restore a minimum of 200 acres of meadow habitat.	Long term	DOEE	DCHA, DDOT, DGS, DHCD, DPR, OP	
NA2.4 Incorporate biodiversity and the use of native plants in green infrastructure on District Government land.	Short term	DOEE, DDOT	DGS, DPR, OP	
NA2.5 Create a habitat connectivity plan to guide restoration of viable, native habitats throughout Washington, DC and in coordination with surrounding jurisdictions.	Short term	DOEE	DDOT, DGS, DPR, OCTO, OP	
NA2.6 Require the District Government to use native plants and trees in all landscaping and green infrastructure outside the roadway right-of-way.	Short term	DOEE	DDOT, DGS, OP	

GOAL 3: Improve human access to and stewardship of nature.

TARGET 3: By 2032, provide access to the natural environment or quality green space within a 10-minute walk of all residents.

NA3.1 Improve the formal trail network for hiking and biking—prioritizing areas east of the Anacostia River—while balancing protection of habitat.	Medium term	DDOT	DPR, OP	
NA3.2 Increase the number of “nature play spaces” at District playgrounds.	Medium term	DPR	DCPS, DGS	
			DCPS,	

Oh how I love MAPS!

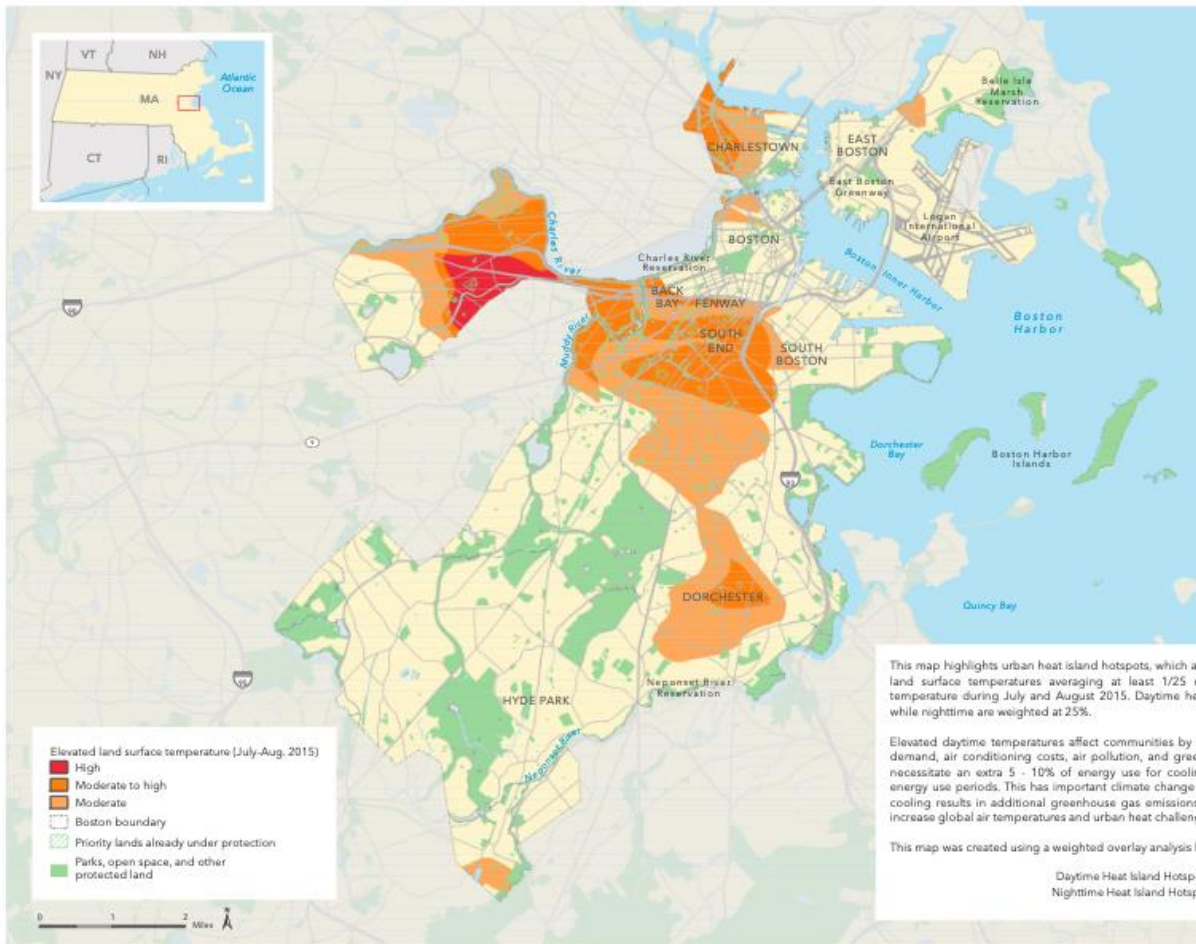


Overall Priorities for Strategic Green Infrastructure Investment

CLIMATE-SMART CITIES: GREEN INFRASTRUCTURE FOR A LOW-CARBON, RESILIENT BOSTON

Special thanks to the City of Boston. June 7, 2016. Copyright © The Trust for Public Land. The Trust for Public Land and The Trust for Public Land logo are federally registered marks of The Trust for Public Land. Information on this map is provided for purposes of discussion and visualization only. www.tpl.org

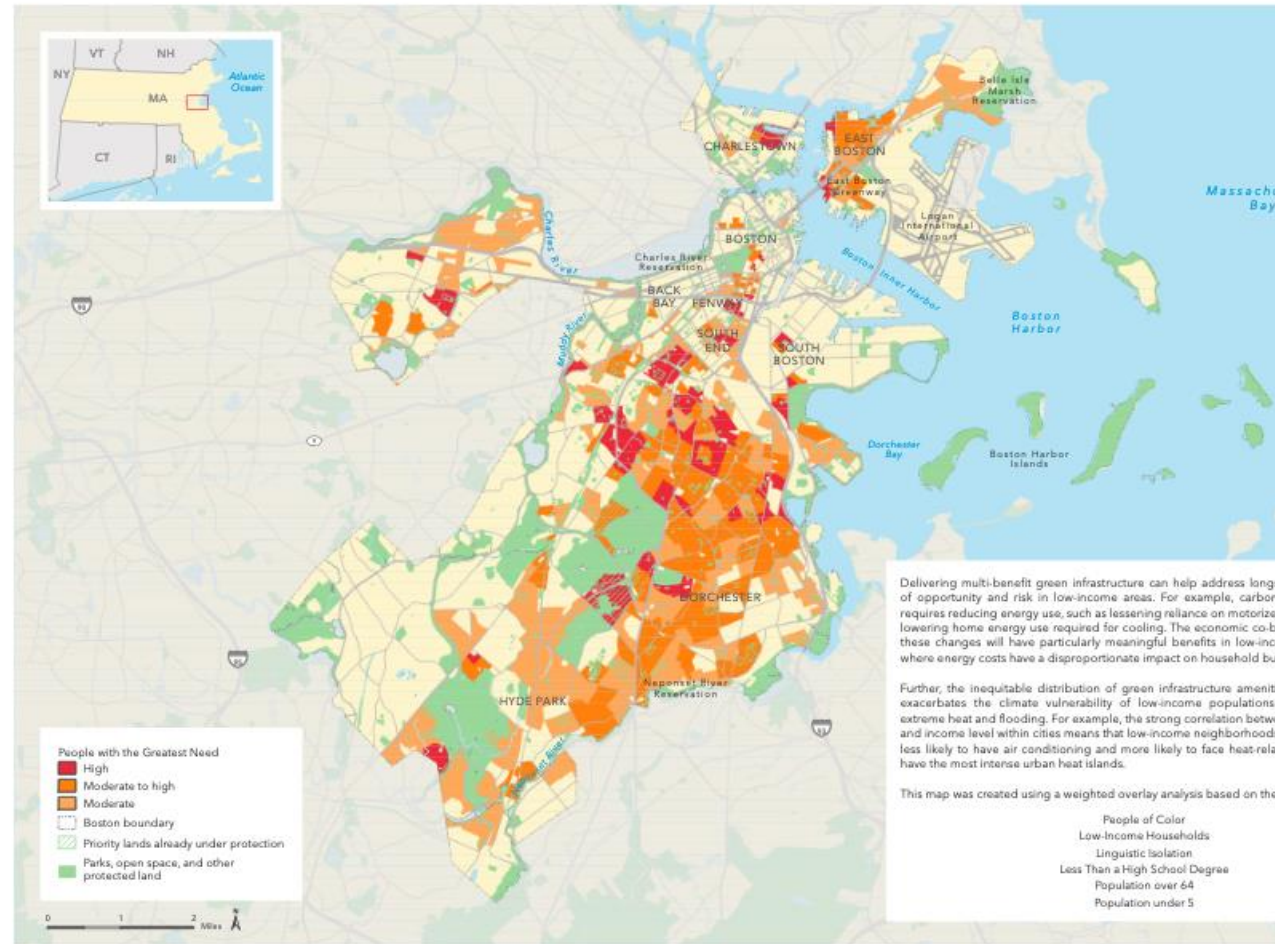




Urban Heat Islands

CLIMATE-SMART CITIES: GREEN INFRASTRUCTURE FOR A LOW-CARBON, RESILIENT BOSTON - COOL

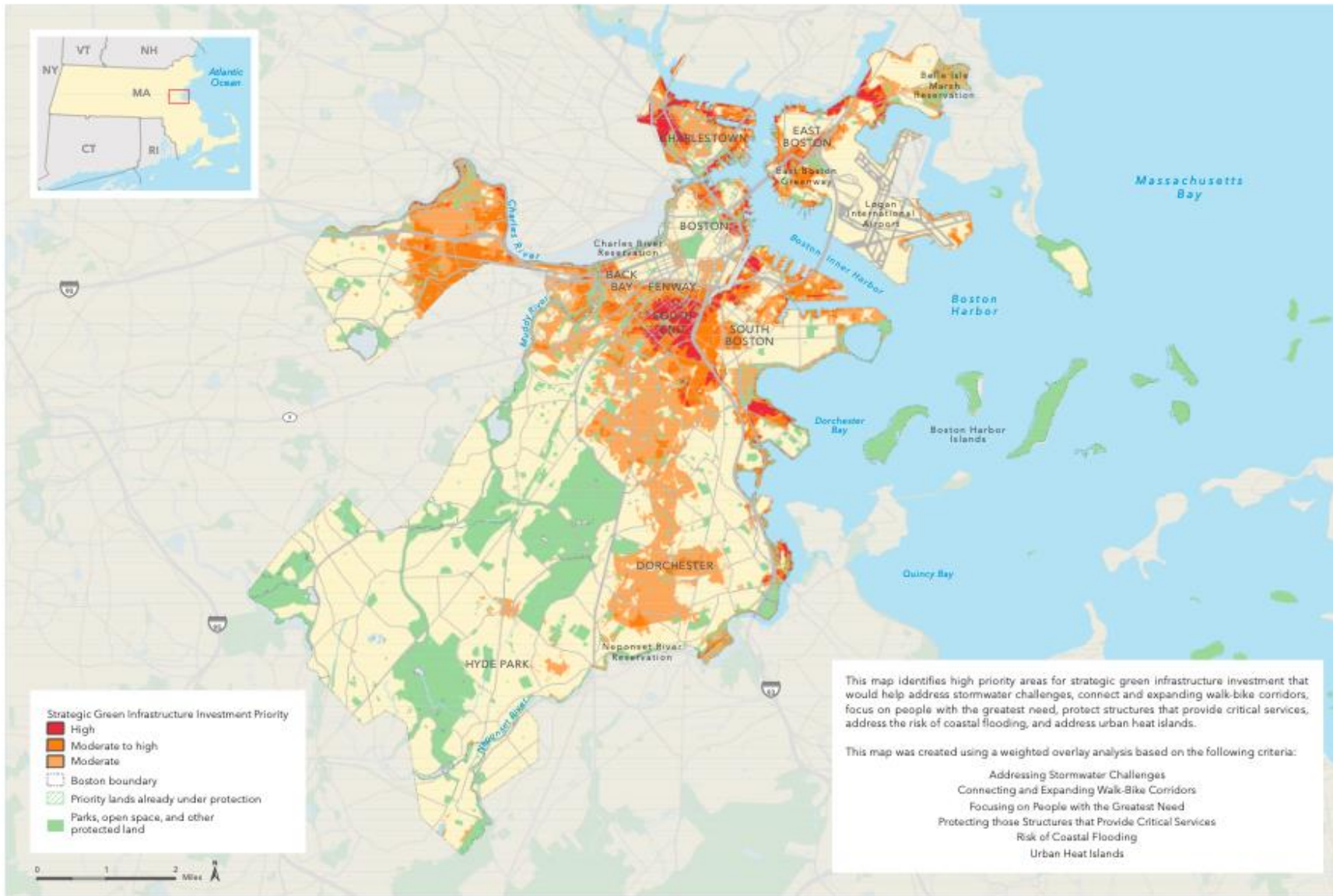
Special thanks to the City of Boston. June 7, 2016. Copyright © The Trust for Public Land. The Trust for Public Land and The Trust for Public Land logo are federally registered marks of The Trust for Public Land. Information on this map is provided for purposes of discussion and visualization only. www.tpl.org



Focusing on People with the Greatest Need

CLIMATE-SMART CITIES: GREEN INFRASTRUCTURE FOR A LOW-CARBON, RESILIENT BOSTON - SOCIAL VULNERABILITY

Special thanks to the City of Boston. June 7, 2016. Copyright © The Trust for Public Land. The Trust for Public Land and The Trust for Public Land logo are federally registered marks of The Trust for Public Land. Information on this map is provided for purposes of discussion and visualization only. www.tpl.org



Overall Priorities for Strategic Green Infrastructure Investment

CLIMATE-SMART CITIES: GREEN INFRASTRUCTURE FOR A LOW-CARBON, RESILIENT BOSTON

Special thanks to the City of Boston. June 7, 2016. Copyright © The Trust for Public Land. The Trust for Public Land and The Trust for Public Land logo are federally registered marks of The Trust for Public Land. Information on this map is provided for purposes of discussion and visualization only. www.tpl.org





NATIONAL EXPLORER

Search for your town



Washington Grove

Municipal report →

MD Congressional District 6

Census Block Group 240317007111

11

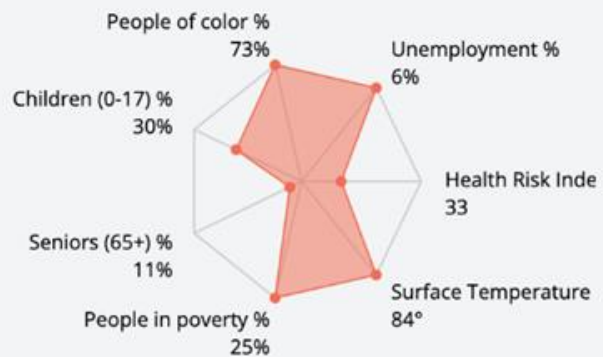
Tree Equity Score

RANK

2nd of 2 blockgroups in Washington Grove

Score indicators

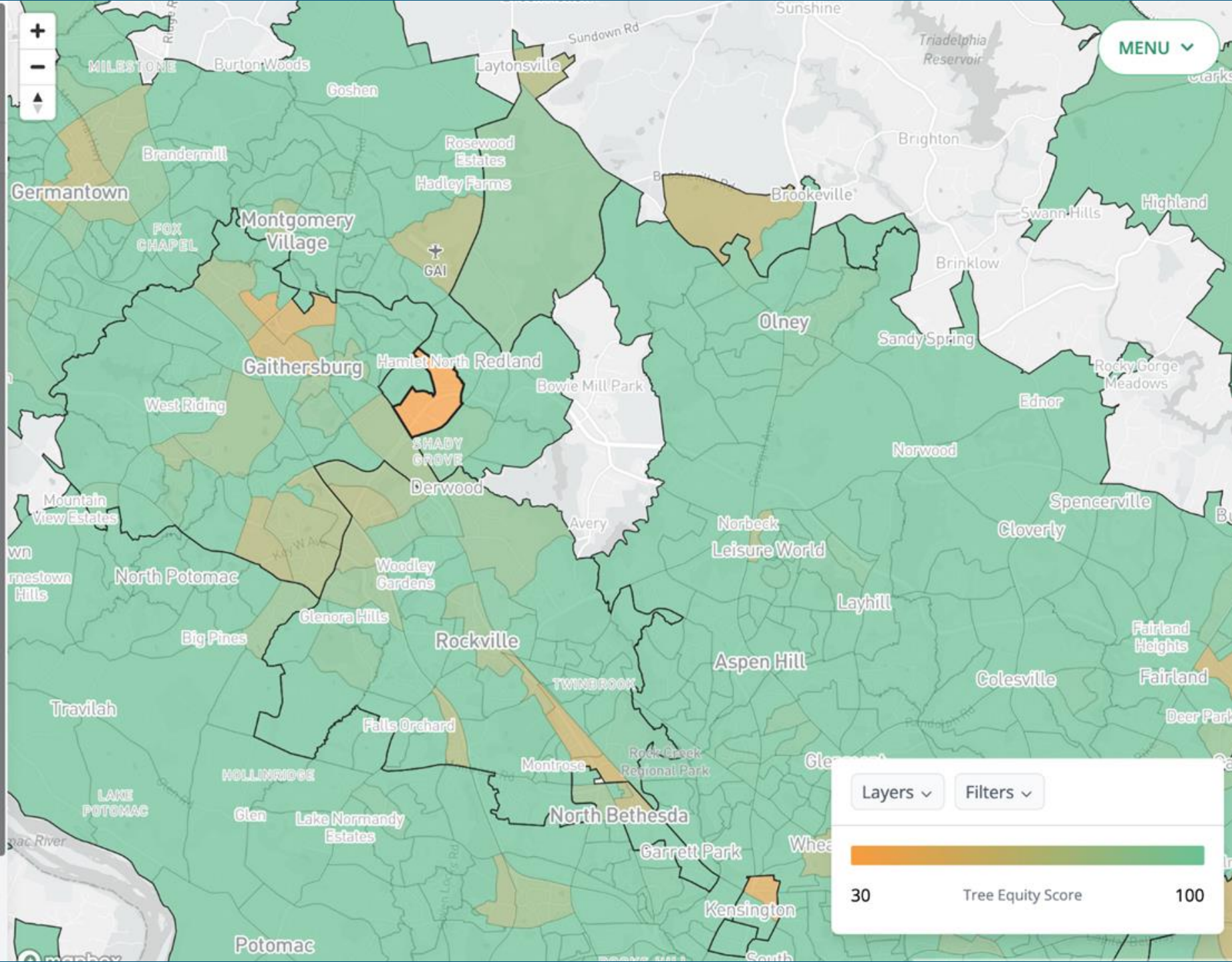
Priority index



Canopy cover goal: 48%



Current canopy cover: 44%



MENU

Layers Filters

30 Tree Equity Score 100

Environmental Justice Populations

Boston Region

Massachusetts Environmental Justice Criteria:



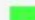


Environmental Justice (EJ) populations are determined by identifying all Census 2000 block groups that meet any of the following criteria:

Income	Households earn 65% or less of statewide median household income
Minority population	25% or more of residents belong to a minority group
Foreign-born	25% or more of residents are foreign-born
English proficiency	25% or more of residents lack English language proficiency





Populations meeting one EJ criterion

	income
	minority population
	foreign-born

Populations meeting two EJ criteria

	income and minority population
	income and English proficiency
	income and foreign-born
	minority population and English proficiency
	minority population and foreign-born

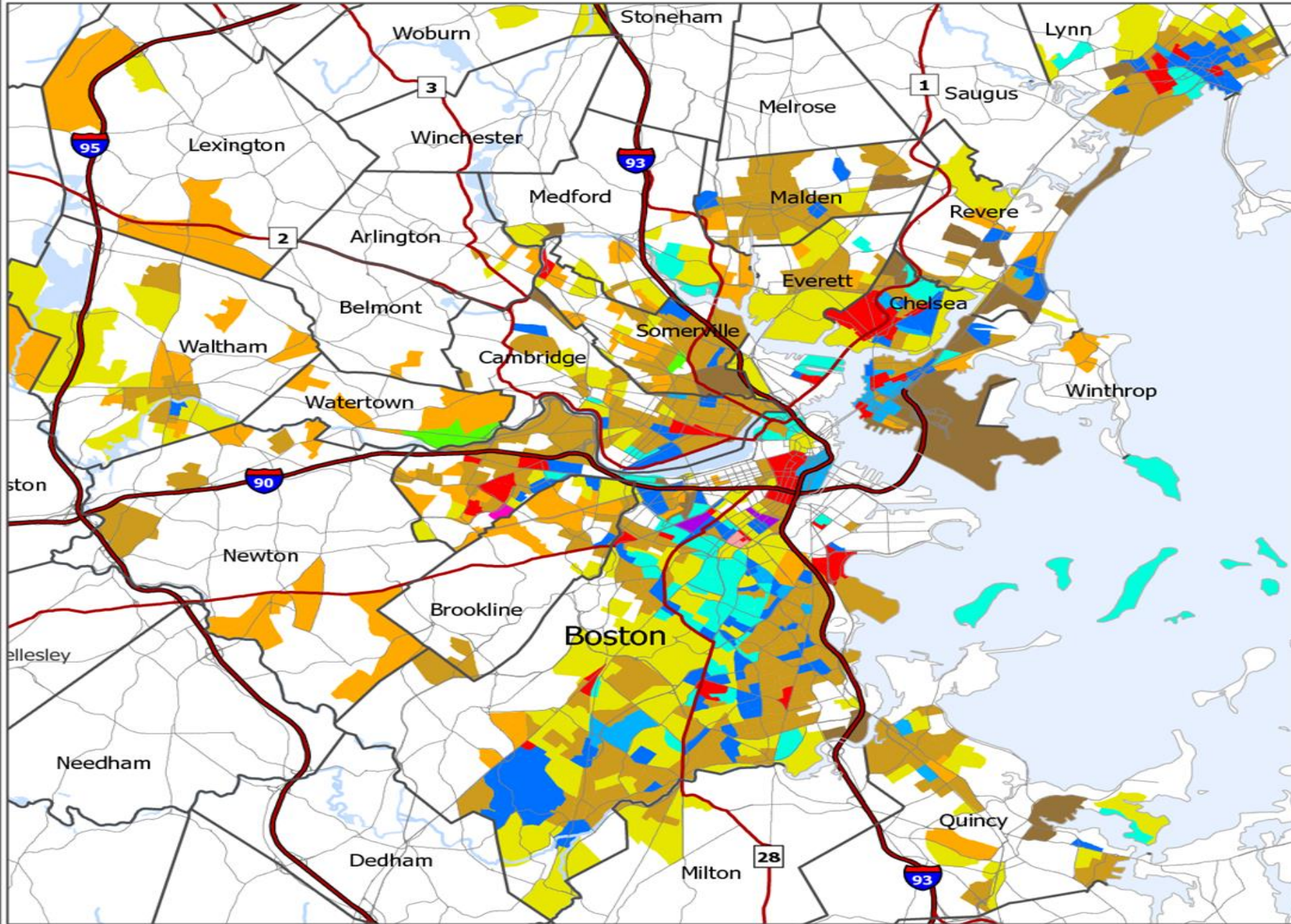
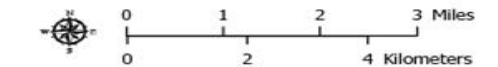
Populations meeting three EJ criteria

	income, minority population and English proficiency
	income, minority population and foreign-born
	minority population, English proficiency and foreign-born
	income, English proficiency and foreign-born

Populations meeting all four EJ criteria

	income, minority population, English proficiency and foreign-born
---	---

For more information contact:
Energy and Environmental Affairs
617-626-1000



Interdepartmental Communication Specialists



Community Building = Resilience



STREET CLOSED

Neighbors at Play



Permit Number: _____

More information: tinyurl.com/sdotplay

Public space permits: (206) 684-5267



Seattle
Department of
Transportation



McKINNEY

BLOCK

PARTY

Your Neighborhood. Your Party.

RESERVE THIS TRAILER FOR FREE!

Available to registered neighborhood groups,
homeowner's associations and crime watch groups.

McKinneyTexas.org/BlockParty • 972-547-1063

Bioretention and Community











East Boston residents 'build a berm' at the Marine Fair.



INTERACTIVE GREEN CLAY STUDY. Within the workshop, the TDC encouraged those who came to take the opportunity to interact with the map shown on the previous page and add green clay where the community member believes there should be additional green space within Junction. The intended goal for this exercise was to get to the additional 58 acres required to meet the Design Standard of 15 acres/1,000 people. The image above shows the outcome of the design exercise at the workshop. One of the most important points to note is that because of the workshop, we have included the old Libbey High School site as a part of the Junction neighborhood and are now showing it as an open green space. To the right is the composite map of added green space for a clearer vision of what the clay showed us.

Let's keep in touch!

- Need to advertize a job?
- Need an intern?
- Willing to speak to a class?

keeley@gwu.edu