

NATIONAL CAPITAL REGION TRANSPORTATION PLANNING BOARD
777 North Capitol Street, N.E.
Washington, D.C. 20002

**RESOLUTION TO UPDATE THE HIGHWAY SYSTEMS FUNCTIONAL CLASSIFICATION FOR
MD 114 WATKINS MILL ROAD**

WHEREAS, the National Capital Region Transportation Planning Board (TPB), as the federally designated metropolitan planning organization (MPO) for the Washington region, has the responsibility under the provisions of the Fixing America's Surface Transportation (FAST) Act, reauthorized November 15, 2021 when the Infrastructure Investment and Jobs Act (IIJA) was signed into law, for developing and carrying out a continuing, cooperative and comprehensive transportation planning process for the metropolitan area; and

WHEREAS, the Bureau of the Census March 17, 2022 Notice issued decennial 2020 urbanized area information, and each State is federally directed (FHWA 23 CFR 450.312, 470.105 and 109, and guidance) to use the information and undertake a thorough update, as appropriate, of urban/urbanized area boundaries and/or highway system functional classifications in cooperation with Metropolitan Planning Organizations and/or localities; and

WHEREAS, functional classifications of highway systems affect transportation planning in that the categories (local, minor collector, major collector, minor arterial, principle arterial, principle arterial freeway, or principle arterial interstate) are used with highway design standards, highway construction funds or maintenance payments, access management standards, traffic calming eligibility, statistical reporting, and certain outdoor advertising controls; and

WHEREAS, periodic reviews and, as appropriate, updates of urban/urbanized area boundaries and/or functional classifications of highway systems generally are warranted in concert with U.S. Census updates for urbanized areas; and

WHEREAS, the Maryland Department of Transportation has proposed an update to MD 114 Watkins Mill Road to the functional classification of highways that reflect the 2020 Census information, and the TPB staff has reviewed and recommends approval of the update presented in the accompanying summary map.

NOW, THEREFORE, BE IT RESOLVED that the National Capital Region Transportation Planning Board approves the proposed updates to the highway system functional classifications presented in the attached materials.

September 24, 2024

The Honorable Christina Henderson
Chair
National Capital Region Transportation Planning Board
Metropolitan Washington Council of Governments
777 North Capital Street, N.E., Suite 300
Washington DC 20002-4201

Dear Ms. Henderson:

The Maryland Department of Transportation (MDOT) requests the National Capital Region Transportation Planning Board's (TPB) concurrence of recommended changes to the Federal Highway Administration's (FHWA) roadway functional classification of MD 114 (Watkins Mill Road) located in Gaithersburg, Maryland.

The opening of the MD 114/I-270 interchange has significantly increased the traffic volumes along MD 114, and high-density commercial development has been approved and is under development in that area. Based on FHWA's 2023 Highway Functional Classification: Concepts, Criteria and Procedures, this warrants a reclassification.

Following FHWA's guidance for the interim adjustment to change the functional classification of roads, the Maryland State Highway Administration (SHA) worked collaboratively with the City of Gaithersburg to determine the appropriate functional classification adjustment for MD 114 between MD 117 (Clopper Road) and MD 355 (North Frederick Avenue). This 1.2-mile-section of Watkins Mill Road is currently classified as a Local Road. With these new conditions, the City of Gaithersburg and SHA recommend the functional classification for MD 114 change from a Local Road to a Minor Arterial Road.

Enclosed with this letter is the supporting documentation for the functional classification change, including site maps, an interim adjustment form with the roadway description, and a concurrence letter from the City of Gaithersburg. Based on the provided information, the MDOT requests that TPB concur with the proposed functional classification for MD 114 (Watkins Mill Road) at the October 4, 2024 Steering Committee meeting. Following TPB's review and approval, the proposed functional classification change will be submitted to FHWA for final approval, anticipated later this year.

Ms. Christina Henderson
Page Two

Please note that based on the 24th decennial U.S. Census taken in 2020, SHA and FHWA are updating the urban and rural boundary for the State of Maryland. This boundary change could affect the functional classification of select roadways across the state. Once the boundary is determined, SHA will coordinate with local jurisdictions for any roadway functional classification changes to their respective roadways. After which, SHA will submit one functional classification concurrence request to the TPB for changes occurring within the TPB's planning area.

Thank you for your consideration on this subject. If you have any additional questions, please contact SHA Regional and Intermodal Planning Division (RIPD) Functional Classification Program Manager, Mr. Darren Bean, at 410-545-0071 or dbean@mdot.maryland.gov.

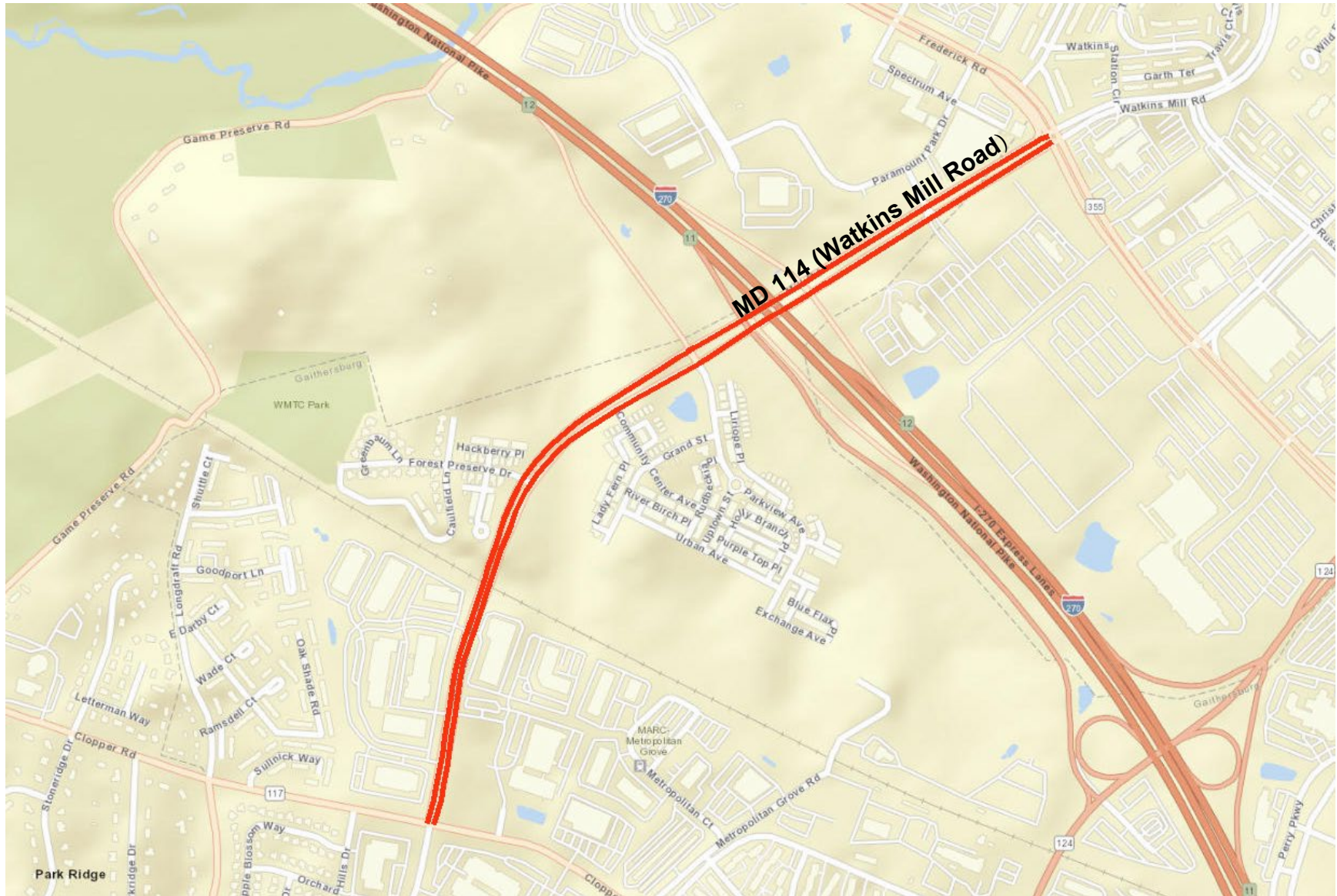
Sincerely,



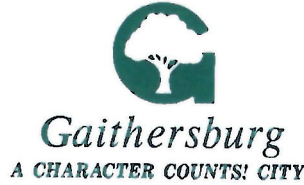
Raymond L. Moravec, P.E.
Director
Office of Planning and Preliminary Engineering

cc: Mr. Darren Bean, Functional Classification Program Manager, RIPD, SHA
Mr. Nate Evans, Assistant Chief, RIPD, SHA
Ms. Tara Penders, Chief, RIPD, SHA

MD 114 (Watkins Mill Road) Location Map



Current Functional Classification: Local Road
Proposed Functional Classification: Major Arterial



May 29, 2024

Ray Moravec, P.E.
Director of Office of Planning and Preliminary Engineering
Maryland State Highway Administration
707 North Calvert Street MS C-502
Baltimore, MD 21202-3601

Subject: Functional Classification Adjustment for MD 114 (Watkins Mill Road)

Dear Mr. Moravec:

The City of Gaithersburg staff has collaborated with the Maryland Department of Transportation State Highway Administration (MDOT SHA) regarding a functional classification adjustment for the following road segment:

- MD 114 (Watkins Mill Road), between MD 117 (Clopper Road) and MD 355 (Frederick Avenue)

This road segment, in the City of Gaithersburg, is currently classified as a Local Road and concurrence is sought to change its classification to Minor Arterial.

Based on FHWA's 2023 Highway Functional Classification: Concepts, Criteria and Procedures manual, the density of residential and commercial areas along Watkins Mill Road warrants a reclassification from Local Road to Minor Arterial. Watkins Mill Road provides direct access to MD 117 (Clopper Road), a Minor Arterial; MD 355 (Frederick Road), an Other Principal Arterial; and the I-270 Interstate ramps. For these reasons, we are proposing to change the Federal Functional Classification of the road segment from Local Road to Minor Arterial.

Thank you for your consideration of this proposed functional classification change.

Sincerely,

Anthony Berger, P.E.
Director of Public Works
City of Gaithersburg

City of Gaithersburg • 800 Rabbitt Road, Gaithersburg, Maryland 20878
301-258-6370 • FAX 301-258-6375 • publicworks@gaithersburgmd.gov • gaithersburgmd.gov

MAYOR
Jud Ashman

COUNCIL MEMBERS
Neil Harris
Lisa Henderson
Yamil Hernández
Jim McNulty
Robert T. Wu

CITY MANAGER
Tanisha R. Briley



Gaithersburg
A CHARACTER COUNTS! CITY

cc: Darren Bean, Functional Classification Program Manager, SHA
Matt Baker, Deputy Administrator for Project Development, SHA
Eric Beckett, Deputy Director, Office of Planning and Preliminary Engineering, SHA
Tara Penders, Acting Chief, Regional and Intermodal Planning Division, SHA
Lisa Shemer, Deputy Director, Data Collection and Performance, SHA
Derek Gunn, P.E., District 3 Engineer, SHA
Rob Robinson, Long Range Planning Manager, City of Gaithersburg

File

City of Gaithersburg • 800 Rabbitt Road, Gaithersburg, Maryland 20878
301-258-6370 • FAX 301-258-6375 • publicworks@gaithersburgmd.gov • gaithersburgmd.gov

MAYOR
Jud Ashman

COUNCIL MEMBERS
Neil Harris
Lisa Henderson
Yamil Hernández
Jim McNulty
Robert T. Wu

CITY MANAGER
Tanisha R. Briley

Maryland Functional Classification Change Request Form

1. Date request submitted	County Montgomery	Municipality/City City of Gaithersburg
2. Road name Watkins Mill Road	Route number <small>if applicable</small>	Begin point/ End point MD 117 Clopper Road/MD 355 Frederick Ave
3. Current Classification Local	Proposed Classification Minor Arterial	Mileage to be re-classified 1.17 (SB) 1.16 (NB)
4. Description of road segment <small>(include proposed or existing)</small>		
<p>Watkins Mill Road is a six to four-lane roadway consisting of blank foot-wide lanes. Watkins Mill Road provides access to MD 117 (Clopper Road) which is classified as a minor arterial, MD 355 (Frederick Avenue) which is classified as a principal arterial and the I-270 Interstate ramps. Watkins Mill Road also provides access to both residential and commercial areas. The estimated Annual Average Daily Traffic for Watkins Mill Road is 28,000. The speed limit along Watkins Mill Road is 35 mph.</p>		
6. Reason for change in classification <small>(include state project number if applicable)</small>		
<p>Based on FHWA's 2023 Highway Functional Classification: Concepts, Criteria and Procedures, the density of residential and commercial areas along Watkins Mill Road and the completion of the I-270 at Watkins Mill Interchange warrants a reclassification from Local Road to Minor Arterial. Watkins Mill Road provides direct access to MD 117 (Clopper Road), a Minor Arterial, MD 355 (Frederick Road), an Other Principal Arterial, and the I-270 Interstate ramps. Watkins Mill Road also serves both residential and commercial areas.</p>		
8. City/County DOT signature		Date
9. MPO Board signatures <small>(include if applicable)</small>		Date
10. MDOT SHA Office of Planning and Preliminary Engineering (OPPE) Director Signature		Date

Classification change request steps:

1. County/City coordinates request with MDOT SHA OPPE.
2. County/City submits functional classification change request form with sections 1-8 completed and returns form to MDOT SHA OPPE.
3. MDOT SHA OPPE coordinates request with MPO (if applicable)
4. MPO returns completes section 9 and returns form to MDOT SHA OPPE (if applicable)
5. MDOT SHA OPPE completes section 10 and submits form along with supplemental map and mileage tables to FHWA for review and approval.