

OneBusAway

presented to
MWCOCG – Washington, D.C.

presented by
Sheldon A. Brown



November 22, 2016

Agenda

- Project Overview
- Project Update
- Lessons Learned
- Recent OBA Successes
- OBA Roadmap
- Getting Started with OBA

Project Overview

What is OneBusAway?

The screenshot displays the busETA website interface. On the left, the 'busETA' logo is at the top, with navigation links for 'Text / Mobile', 'About', 'Contact', 'Developers', and 'Help'. Below the logo, the route '6a' is selected, with a tip: 'TIP: Enter an intersection, bus route or bus stop code.' Under 'Routes:', '6A DC-DULLES' is listed, with sub-routes: 'In EAST to L'ENFANT PLAZA STATION' and 'In WEST to DULLES AIRPORT'. A Google Translate icon is at the bottom left of the map area.


The central map shows a route starting at a red bus stop icon near Dulles Airport and ending at a blue bus stop icon near Foggy Bottom Station. The route is marked with a thick black line across the Washington DC area, passing through areas like Reston, Herndon, Fairfax, Arlington, and Washington.

On the right side of the interface, the 'busETA' logo is repeated. Below it are buttons for 'Nearby Stops' and 'Nearby Routes'. A search bar contains the route number '1003183' and a search icon. A tip below the search bar reads: 'TIP: Enter an intersection, bus route or bus stop code.' A blue button labeled 'REFRESH (UPDATED 9:19:56 AM)' is positioned below the search bar. Under the heading 'Bus Stop:', the stop '23RD ST NW + I ST NW' is displayed. Below this, the section 'Buses en-route:' lists several buses with their respective routes, arrival times, distances, and vehicle IDs:

- 31 SOUTH to FOGGY BOTTOM STATION**
 - 11 minutes, 1.3 miles away Vehicle 7109
 - 23 minutes, 3.6 miles away Vehicle 6466
 - 32 minutes, 5.1 miles away Vehicle 7154
- 32 WEST to FOGGY BOTTOM STATION**
 - 9 minutes, 0.9 miles away Vehicle 8063
 - 20 minutes, 1.3 miles away Vehicle 2911
 - 36 minutes, 4.1 miles away Vehicle 8045
- 36 WEST to FOGGY BOTTOM STATION**
 - 8 minutes, 0.9 miles away Vehicle 2428
 - 13 minutes, 1.2 miles away Vehicle 8054
 - 48 minutes, 6.4 miles away Vehicle 2440
- 39 WEST to FOGGY BOTTOM STATION**
 - 43 minutes, 5.8 miles away Vehicle 2911
 - 59 minutes, 8.5 miles away Vehicle 2871
- H1 SOUTH to POTOMAC PARK**
 - 10 minutes, 1 stop away Vehicle 2502
 - 17 minutes, 2.0 miles away Vehicle 2878
- L1 SOUTH to POTOMAC PARK**
 - 3 minutes, < 1 stop away Vehicle 6471

Project Overview

What is OneBusAway?



OneBusAway - Mobile Apps

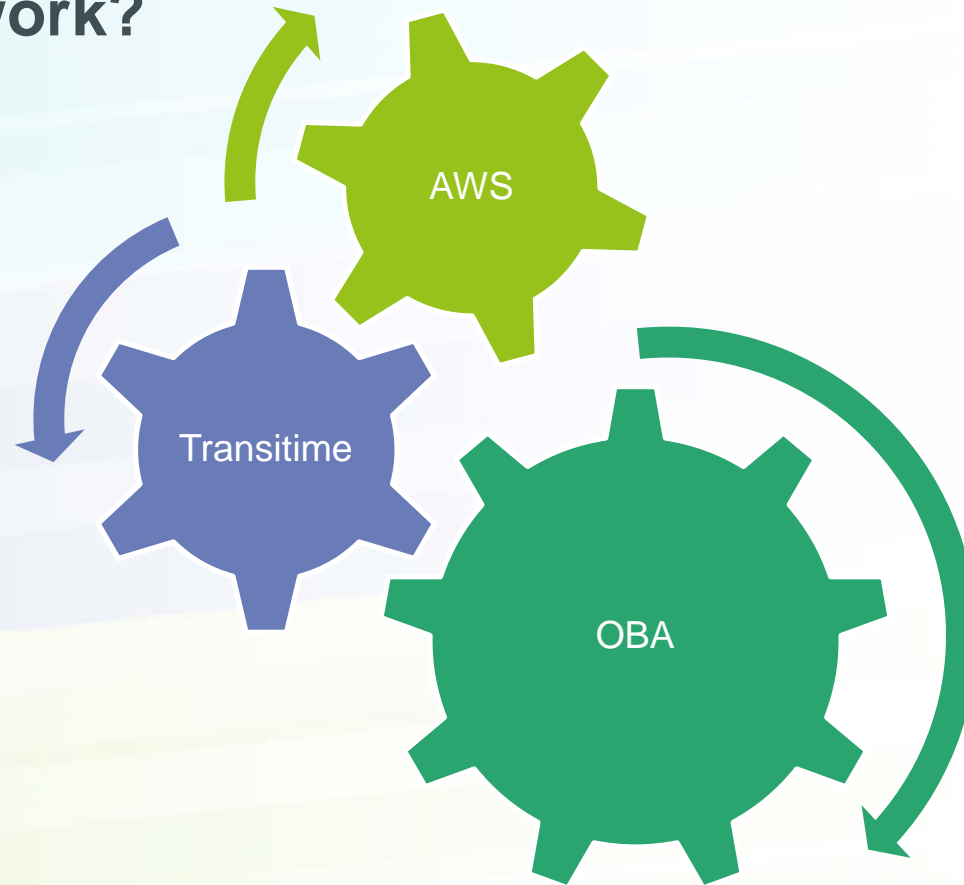
Android iPhone Windows Phone & Windows 8

2 AVE EXT S & S WASHINGTON ST Stop #380

410	Downtown Seattle (scheduled)	1 minute	30 minutes 50 minutes
405	Downtown Seattle (scheduled)	3 minutes	53 minutes
402	Downtown Seattle (scheduled)	4 minutes	13 minutes 22 minutes
415	Downtown Seattle (scheduled)	6 minutes	33 minutes 48 minutes
590	Commerce St Transit Area Bus #9214	8 minutes	
594	Lakewood Station (scheduled)	23 minutes	
417	Downtown Seattle (scheduled)	36 minutes	36 minutes
422	Downtown Seattle (scheduled)	61 minutes	
424	Downtown Seattle (scheduled)	63 minutes	

Project Overview

How does it work?



WMATA Project Update

Initial Deployment Results

- Prediction algorithm was learning the region
- GTFS was relatively new
- Growing pains
- User base hesitant about change

Current Deployment Status

- Historically weighted predictions
- Many bug fixes / improvements
- Strong, stable deployment with low data latency

Lessons Learned

- 30 day pilot recommended before public release
- Thorough GTFS examination
- Leverage additional data evaluation tools
- Strongly advise demo investment to build internal momentum/familiarity

OneBusAway: Successes

- WMATA: Robust, reliable deployment with great uptime
- HART: Mobile Trip-Planning Integration (Android)
- HART/PSTA: Leading Regional Deployment efforts in Tampa
- UTA: OBA Deployment Pilot Success

Moving Forward

Additional
Reporting

Prediction
Improvements

Multi-Modal
Support

Trip Planning

OBA Presence

CS Deployments

- New York MTA (NYC)
- WMATA (DC)
- Sound Transit (Seattle)
 - » 10+ agencies involved
- HART/PSTA (Tampa)
 - » Future regional deployment

Other Deployments

- San Diego
- Atlanta
- York (Canada)
- Rogue Valley (Oregon)
- And more
 - » 14 total

OBA: Getting Started

Why is it the **BEST** solution for agencies?

- Hardware agnostic
- Open source/transparent/flexible
- Massive community support
- Minimal financial commitment
- High reliability

OBA: Getting Started

What is available in a deployment package?

- SMS
- IVR
- Service Alerts
- Developer API + Mobile Apps
- Issue Reporting
- Wiki Support
- User Management
- API Key Management
- Prediction Accuracy Reporting
- Block Reporting
- Highly-Available Server configuration
- Complete system Monitoring
- 24/7 support

OBA: Getting Started

- GTFS
- + Vehicle Tracking (GPS)
- + AVL Data
- + Vehicle Predictions
- Schedule Pilot/Demo

QUESTIONS ?