

AIR CARGO AND PASSENGER ENPLANEMENTS LEVELS

Before, during, and after the pandemic

Zhuo Yang
Transportation Data Analyst

Aviation Technical Subcommittee
March 23, 2023



Research Question

- How have air cargo and passenger enplanement levels changed before, during, and after the pandemic?



Outline

- Context
 - Employment, Traffic Volumes, Global Supply Chain Pressure, E-Commerce
- Air Cargo/Freight
 - Overall level of freight and air cargo, share of shipments by air, changes to most common commodities shipped by air,
 - Trend by origin and destination by states and countries.
- Enplanements
 - Level of Air Passengers by month, by origin and destination states and countries.

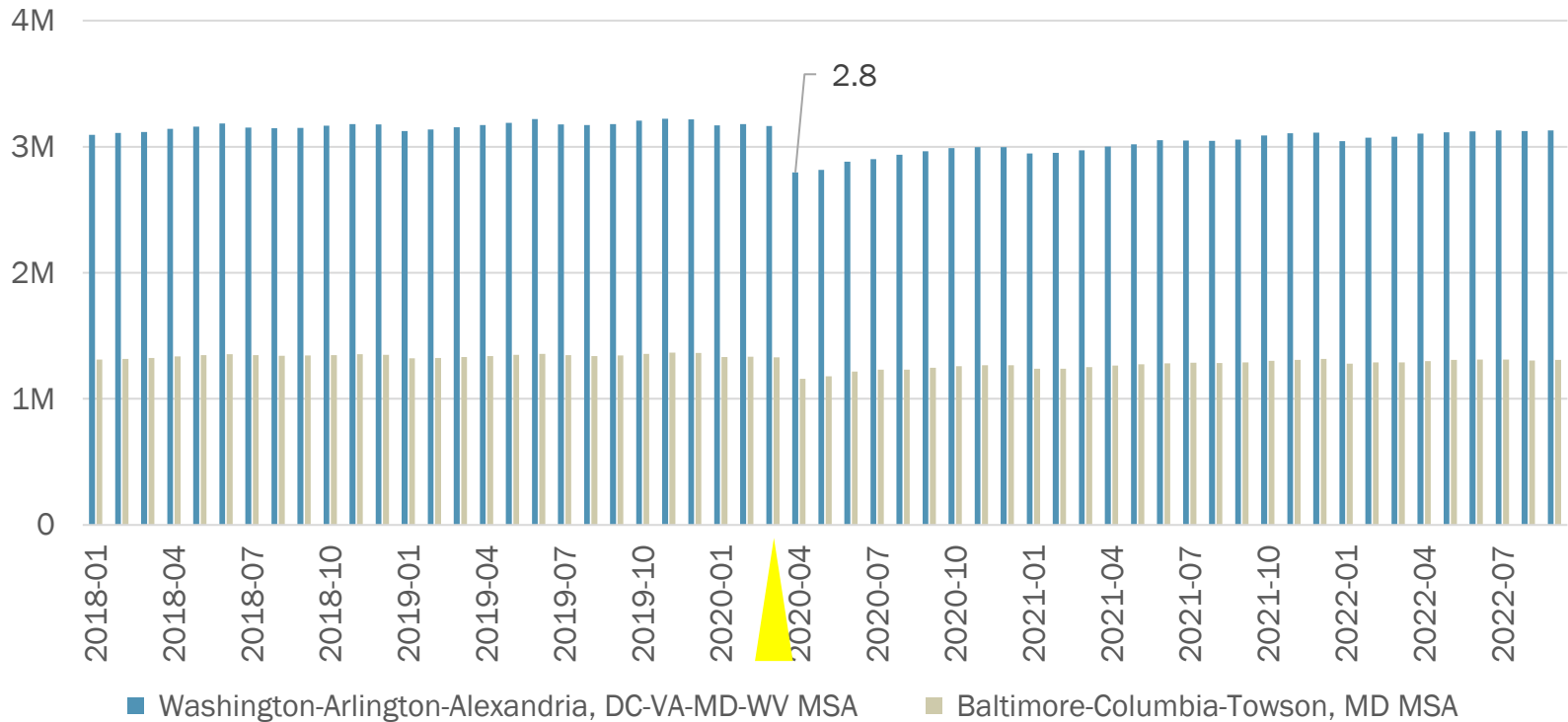


Part 1. Context



Employment Trend

Washington and Baltimore Region

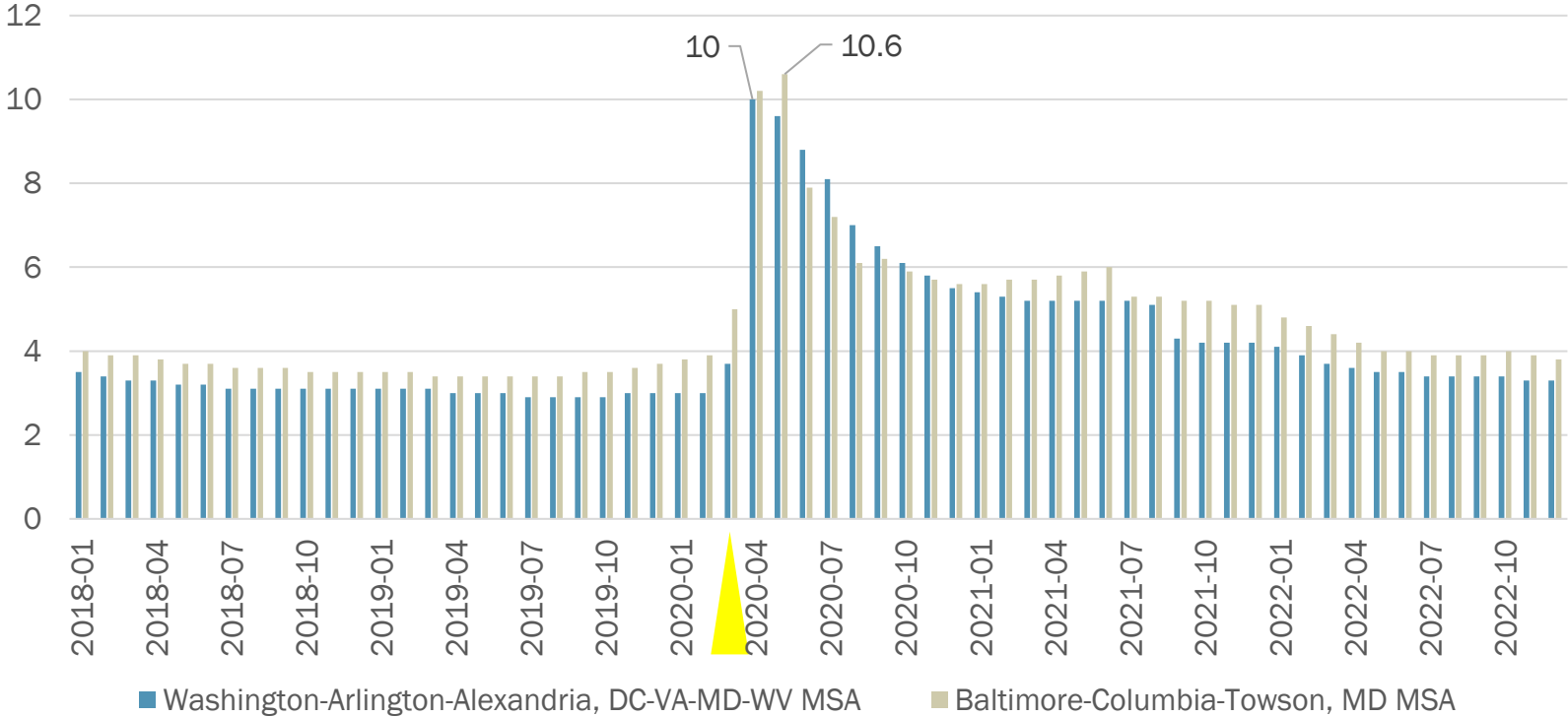


Source: U.S. Bureau of Labor Statistics, Quarterly Census of Employment and Wages, https://data.bls.gov/cew/apps/data_views/data_views.htm#tab=Tables



Unemployment Rate (%)

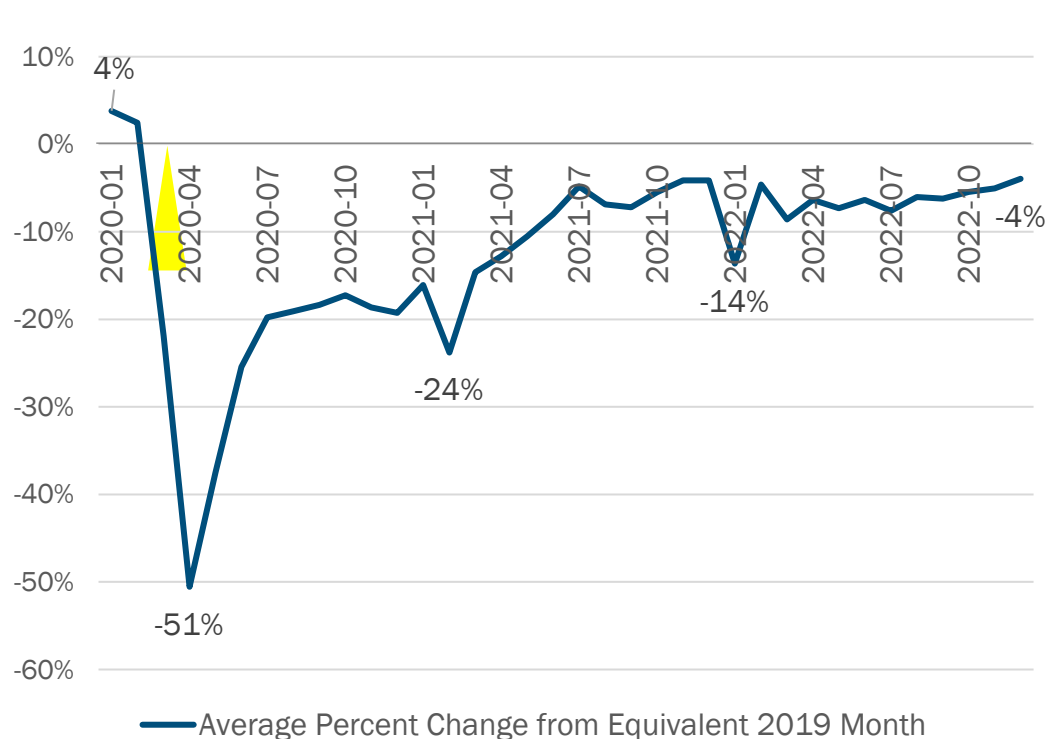
Washington and Baltimore Region



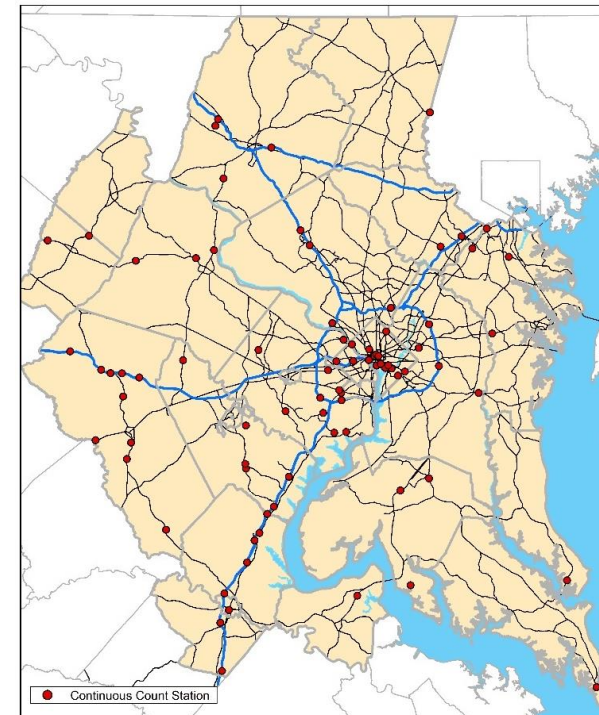
Source: US Bureau of Labor Statistics, Local Area Unemployment Statistics, <https://www.bls.gov/web/metro.supp.toc.htm>, Table 1

Traffic Volumes, Average Change from Equivalent 2019 Month

TPB Modeled Region



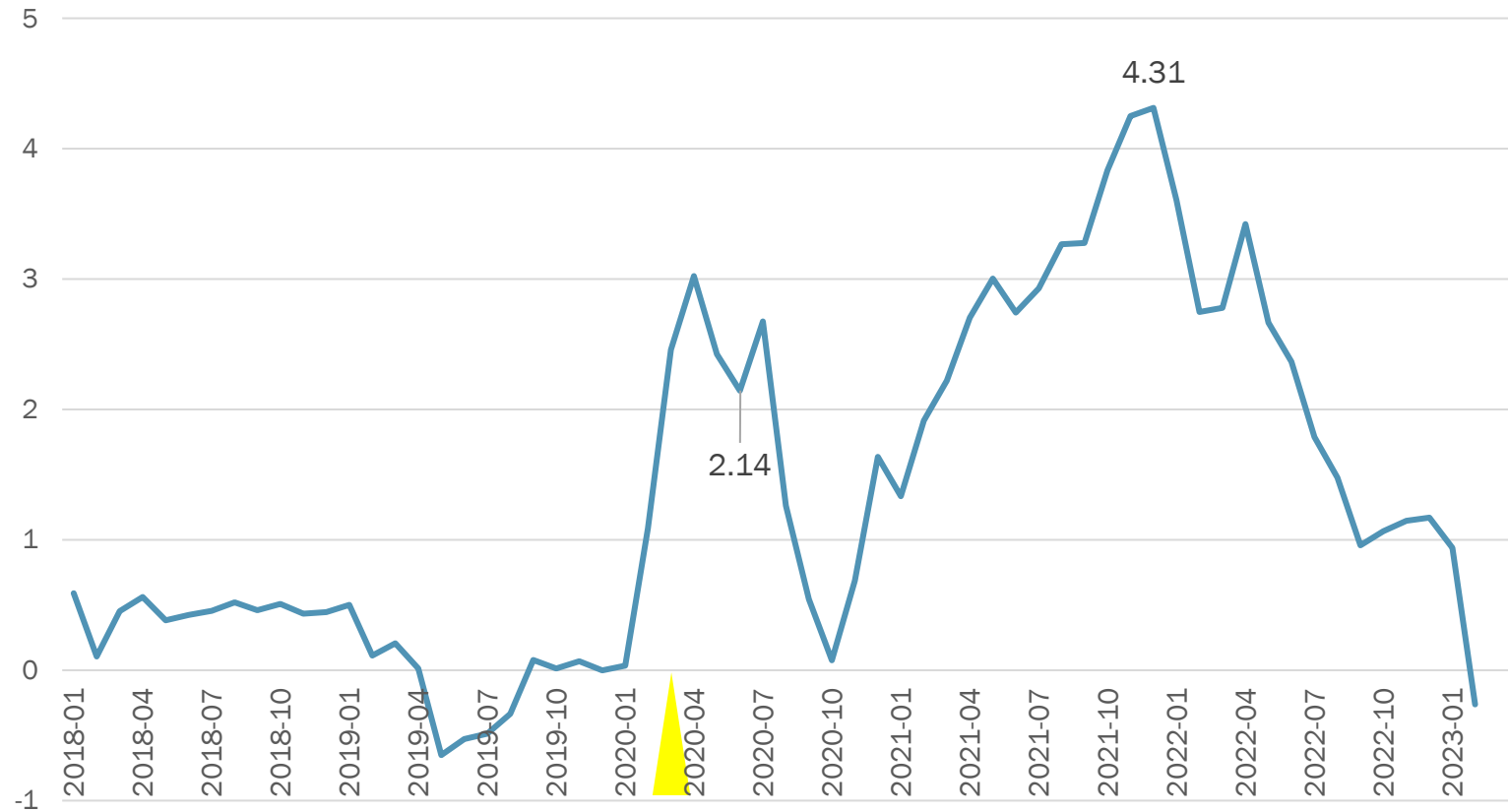
Continuous Count Stations in the TPB Modeled Region



Source: National Capital Region Transportation Planning Board, COVID-19 Travel Monitoring Snapshot Pre-Pandemic to December 2022 Analysis, <https://www.mwco.org/documents/2022/05/10/covid-19-travel-monitoring-snapshot-covid19-featured-publications-traffic-monitoring/>, page 2



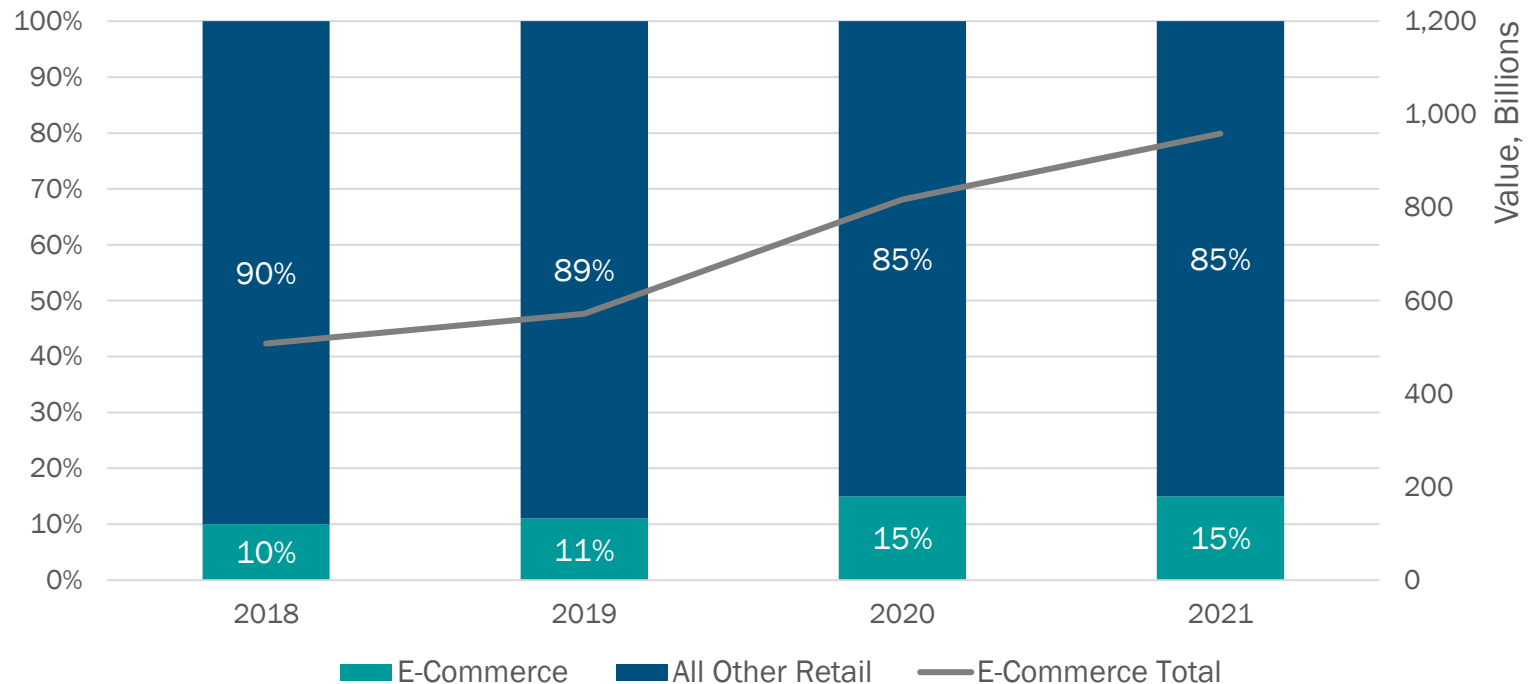
Global Supply Chain Pressure Index



Source: Federal Reserve Bank of New York, Global Supply Chain Pressure Index, <https://www.newyorkfed.org/research/gscpi.html>.



E-commerce United States

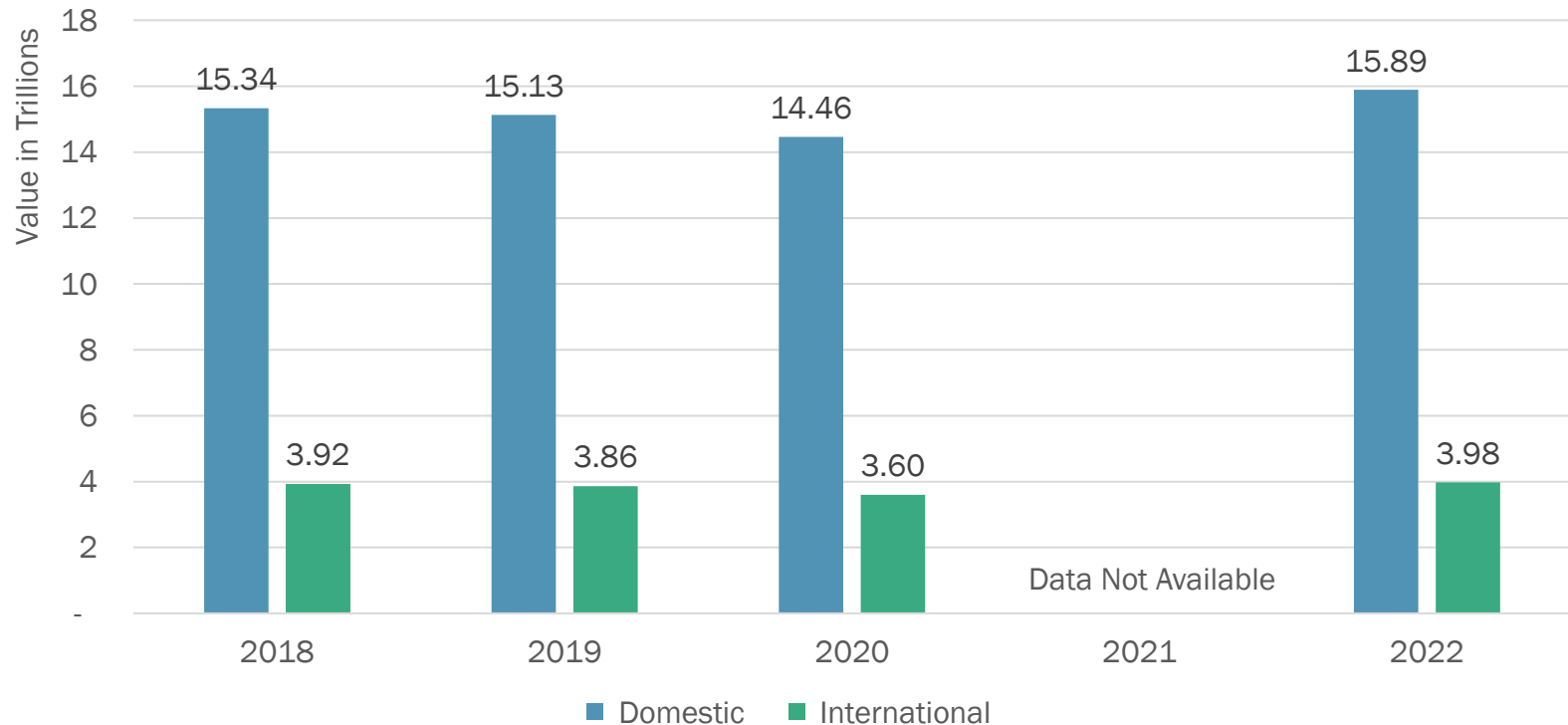


Source: US Census, Annual Retail Trade Survey, Estimated Annual U.S. Retail Trade Sales - Total and E-commerce, <https://www.census.gov/data/tables/2021/econ/arts/annual-report.html>

Note: E-commerce sales are sales of goods and services where the buyer places an order, or the price and terms of the sale are negotiated, over an Internet, mobile device (M-commerce), extranet, Electronic Data Interchange (EDI) network, electronic mail, or other comparable online system. Payment may or may not be made online.



Freight, United States



Source: Freight Analysis Framework, Zone Summary by Mode and Trade, 2018- 2022, <https://faf.ornl.gov/faf5/SummaryTable.aspx> ,



Part 2. Air Cargo



Air Cargo

- Air Cargo is the transport of goods by air. It provides a link in the supply chain with other forms of freight services to transport goods from one location to another.
- The total value of goods transported by air is approximately six trillion annually, accounting for 35% of world trade.
- Benefits: faster than other methods, worldwide reach, high level of security with less risk of theft or damage, time-sensitive goods, such as perishable items, less packaging than other freight transport, reliable schedule with dependable arrival and departure times that are only affected by harsh weather
- Considerations: More expensive (4 to 6 times road transport shipment; 12 to 16 times sea freight), size and weight limitations, limitations for shipping dangerous goods

Source: Asiana USA, "Air Freight vs Air Cargo", <https://www.asianausa.com/air-freight-vs-air-cargo-is-there-difference/>
IATA.org, "What Types of Cargo are Transported by Air" <https://www.iata.org/en/publications/newsletters/iata-knowledge-hub/what-types-of-cargo-are-transported-by-air/>

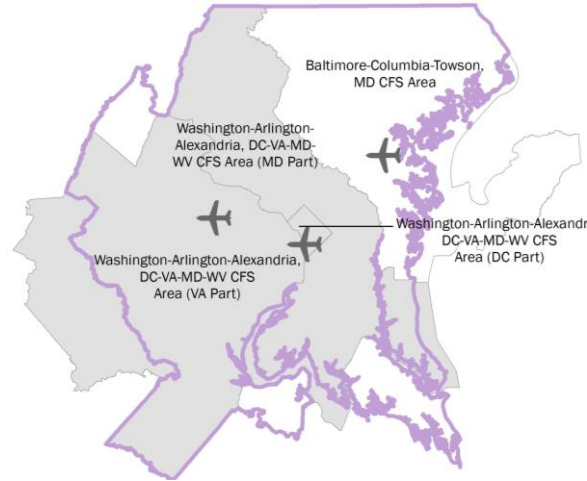


Freight Analysis Framework Regions

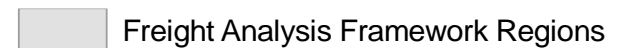
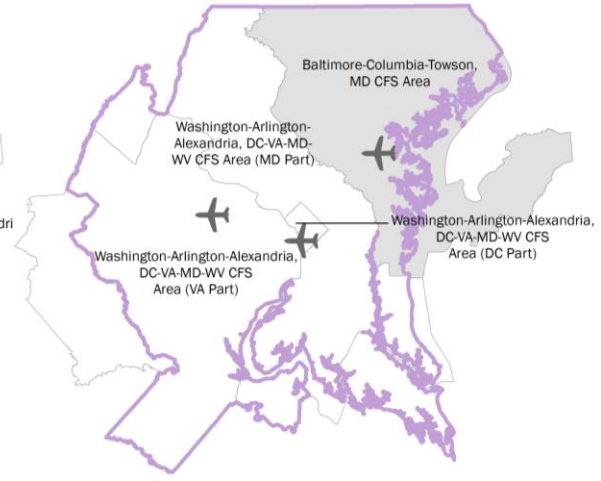
Washington and Baltimore Region



Washington Region

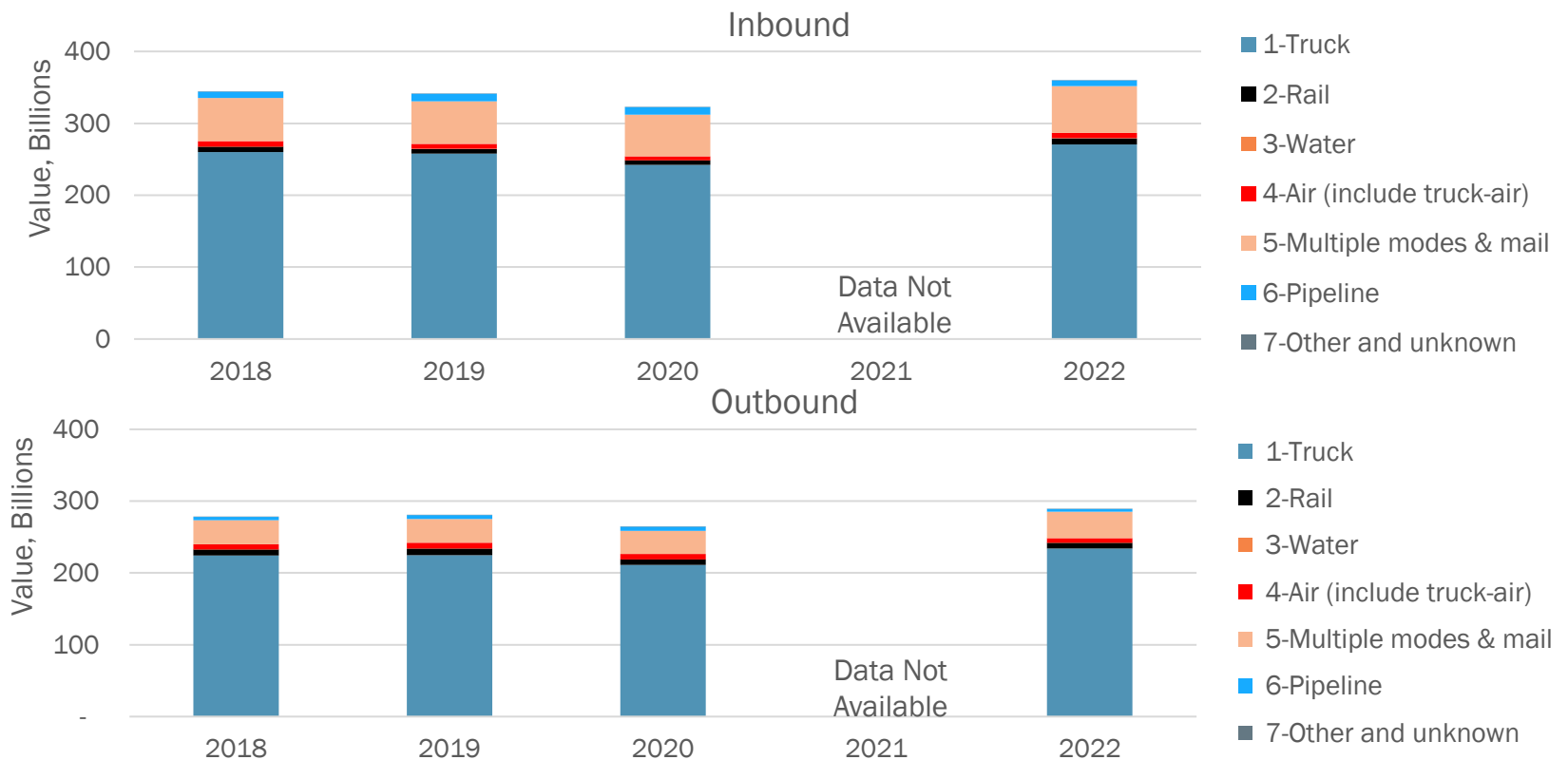


Baltimore Region



Freight, Washington and Baltimore Regions

Outbound and Inbound Freight Shipments

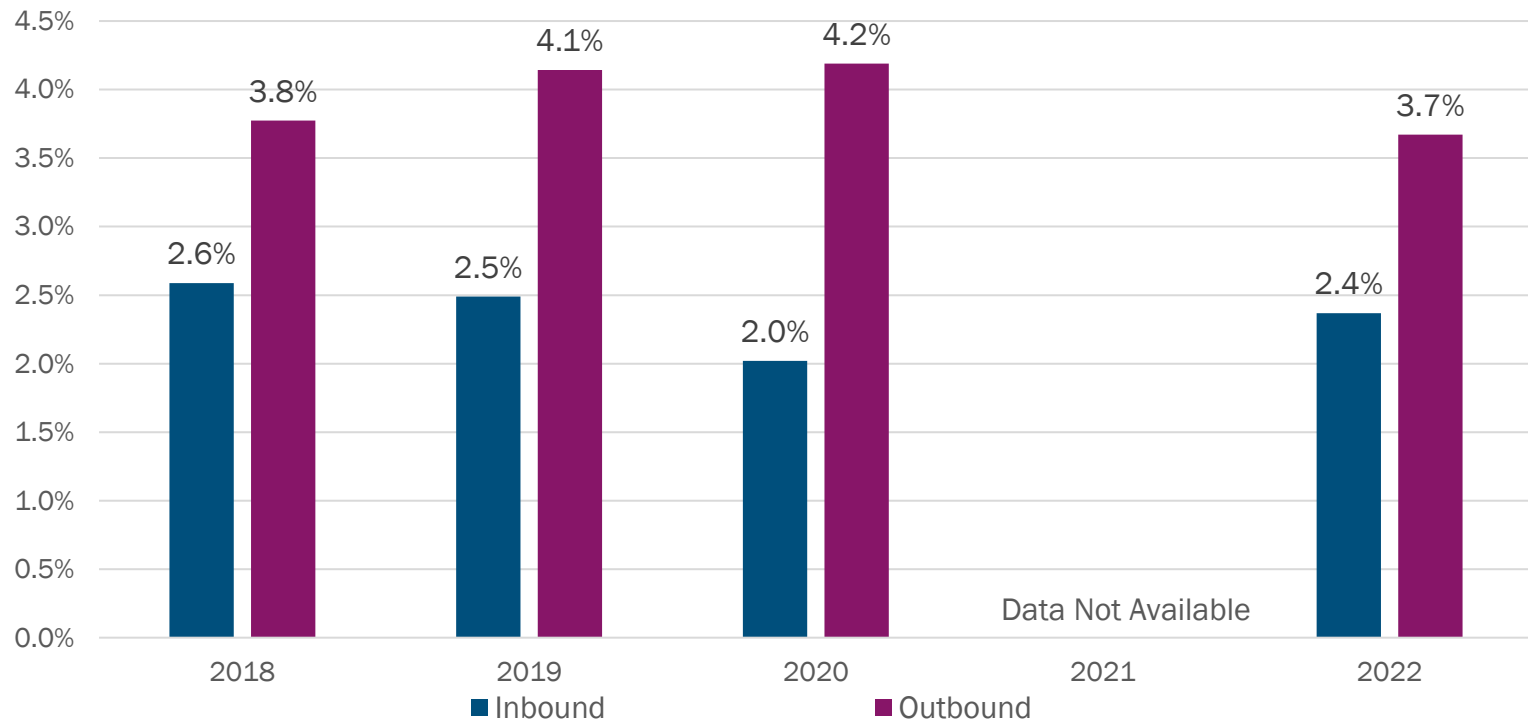


Source: Freight Analysis Framework, Zone Summary by Mode and Trade, 2018- 2022, <https://faf.ornl.gov/faf5/SummaryTable.aspx> , Washington Region: Washington DC-VA-MD-WV (DC, MD, and VA Parts); Baltimore Region: Baltimore-Columbia-Towson, MD CFS Area



Air Cargo (Washington Region)

Share of Value(\$) of Outbound and Inbound Freight Shipments

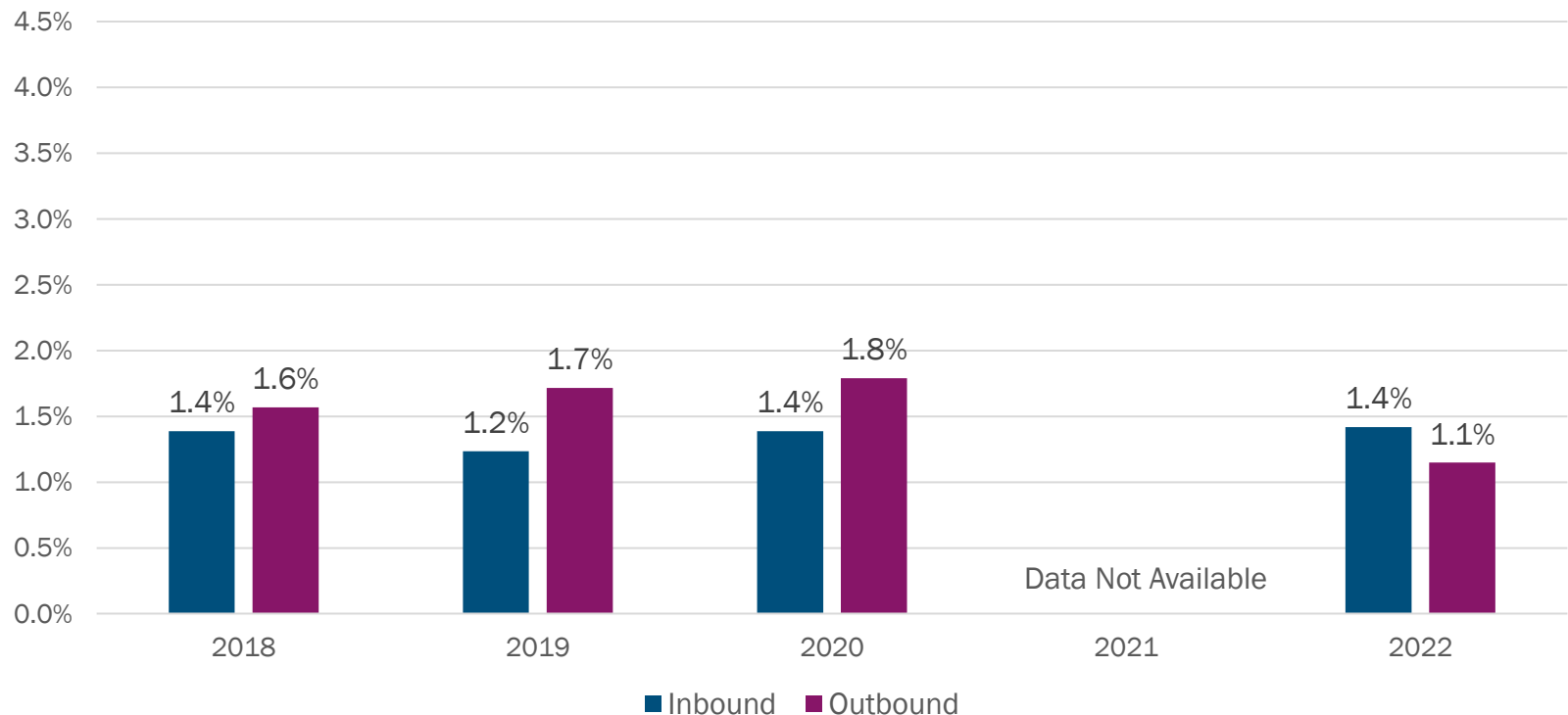


Source: Freight Analysis Framework, Zone Summary by Mode and Trade, 2018- 2022, <https://faf.ornl.gov/faf5/SummaryTable.aspx> , Washington Region: Washington DC-VA-MD-WV (DC, MD, and VA Parts)
Mode: 4-Air (include truck-air) : Includes shipments move by air or a combination of truck and air in commercial or private aircraft. Includes air freight and air express. In the case of imports and exports by air, domestic moves by ground to and from the port of entry or exit are categorized with Truck.



Air Cargo (Baltimore Region)

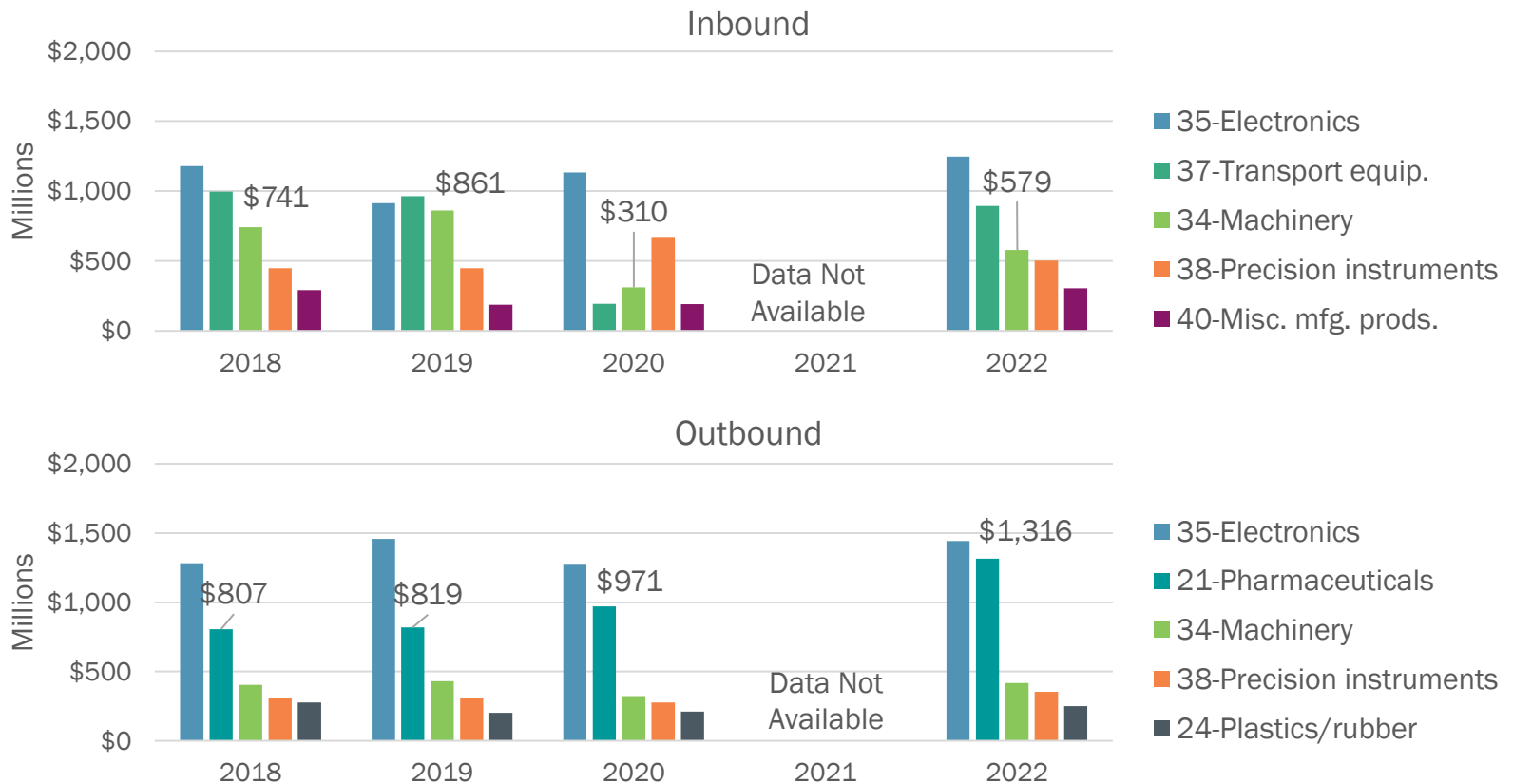
Share of Value(\$) of Outbound and Inbound Freight Shipments



Source: Freight Analysis Framework, Zone Summary by Mode and Trade, 2018- 2022, <https://faf.ornl.gov/faf5/SummaryTable.aspx> , Baltimore Region: Baltimore-Columbia-Towson, MD CFS Area
Mode: 4-Air (include truck-air) : Includes shipments move by air or a combination of truck and air in commercial or private aircraft. Includes air freight and air express. In the case of imports and exports by air, domestic moves by ground to and from the port of entry or exit are categorized with Truck.



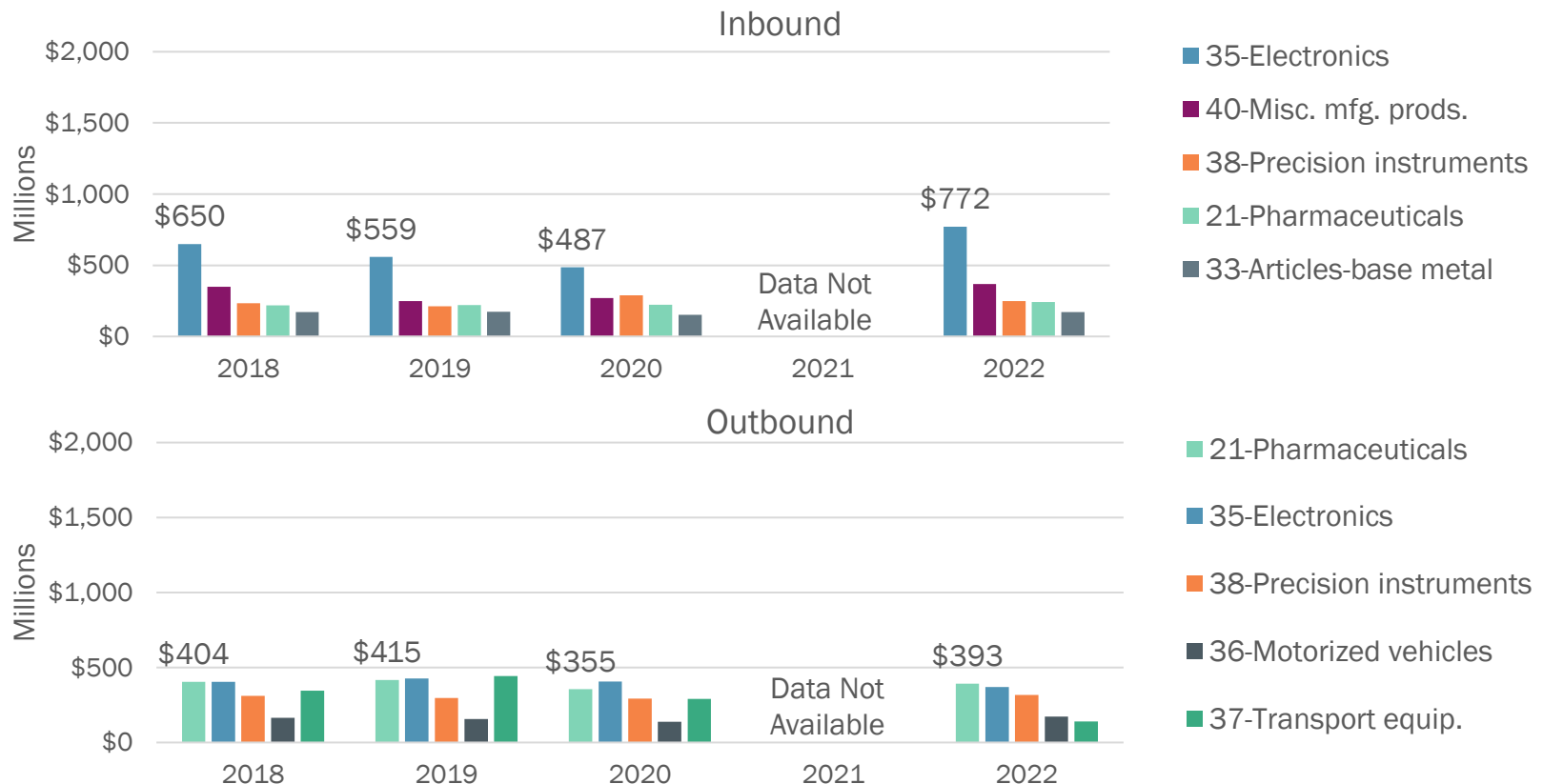
Top 5 Commodities by Air, 2022 Washington Region



Source: Freight Analysis Framework, Zone Summary by Mode and Trade, 2018- 2022, <https://faf.ornl.gov/faf5/SummaryTable.aspx> , Washington Region: Washington DC-VA-MD-WV (DC, MD, and VA Parts); Mode: 4-Air (include truck-air) : Includes shipments move by air or a combination of truck and air in commercial or private aircraft. Includes air freight and air express. In the case of imports and exports by air, domestic moves by ground to and from the port of entry or exit are categorized with Truck.



Top Commodities by Air, 2022 Baltimore Region

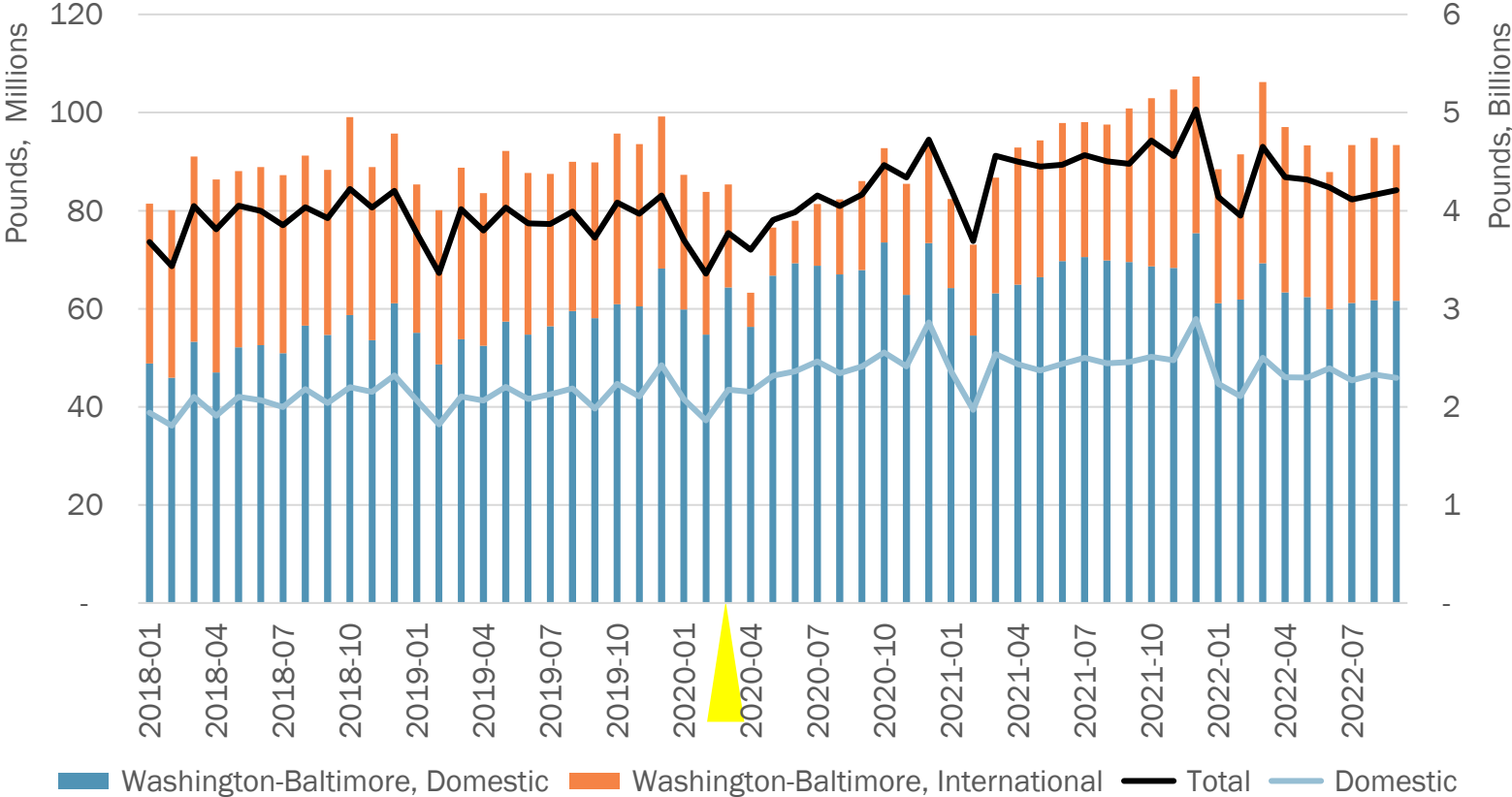


Source: Freight Analysis Framework, Zone Summary by Mode and Trade, 2018- 2022, <https://faf.ornl.gov/faf5/SummaryTable.aspx> , Baltimore Region: Baltimore-Columbia-Towson, MD CFS Area

Mode: 4-Air (include truck-air) : Includes shipments move by air or a combination of truck and air in commercial or private aircraft. Includes air freight and air express. In the case of imports and exports by air, domestic moves by ground to and from the port of entry or exit are categorized with Truck.



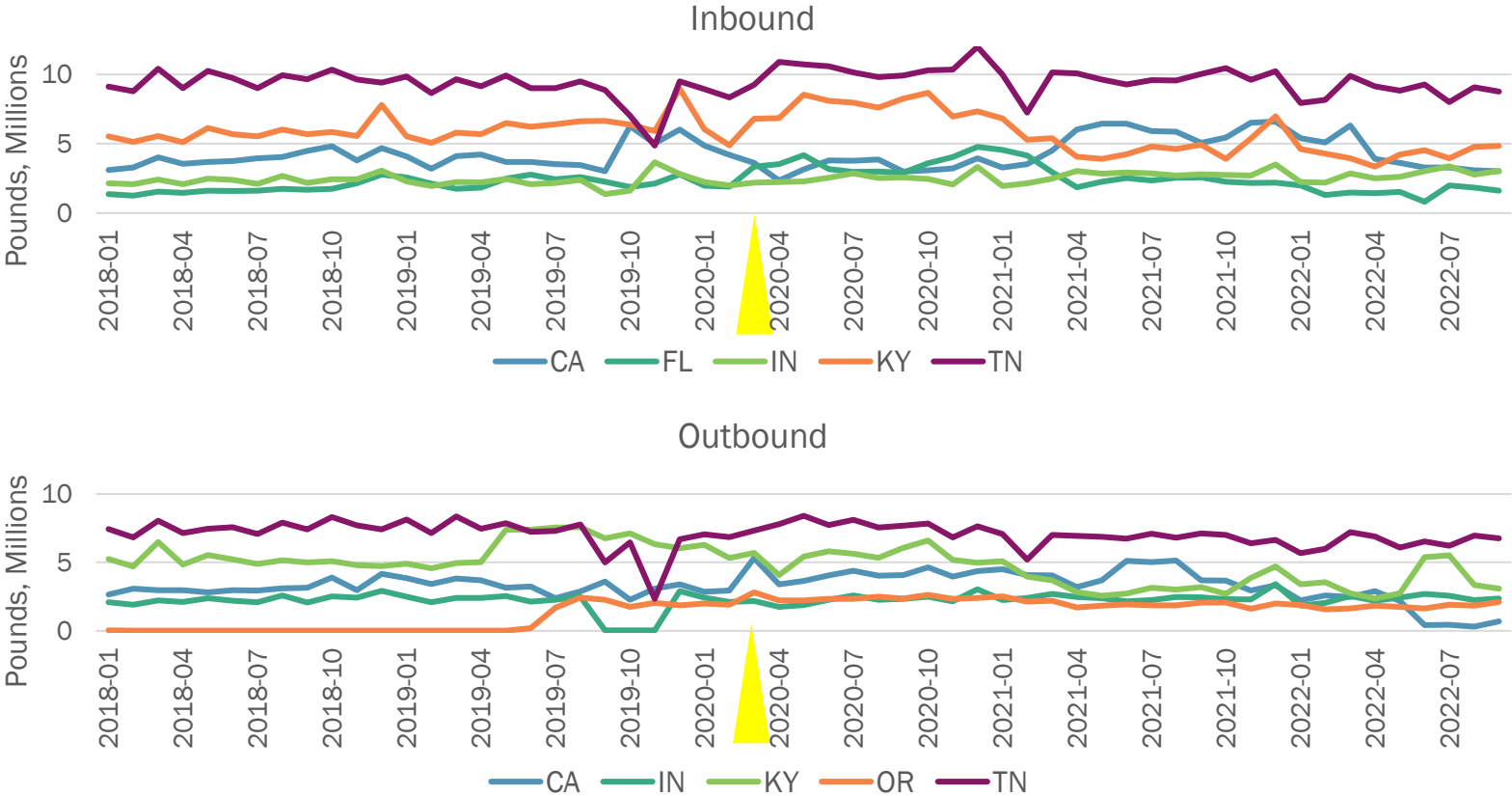
Air Freight Washington-Baltimore Airports



Source: U.S. Bureau of Transportation Statistics, Air Cargo <https://www.bts.gov/topics/freight-transportation/air-cargo>
 Notes: 9 months of data observed from BTS in 2022.

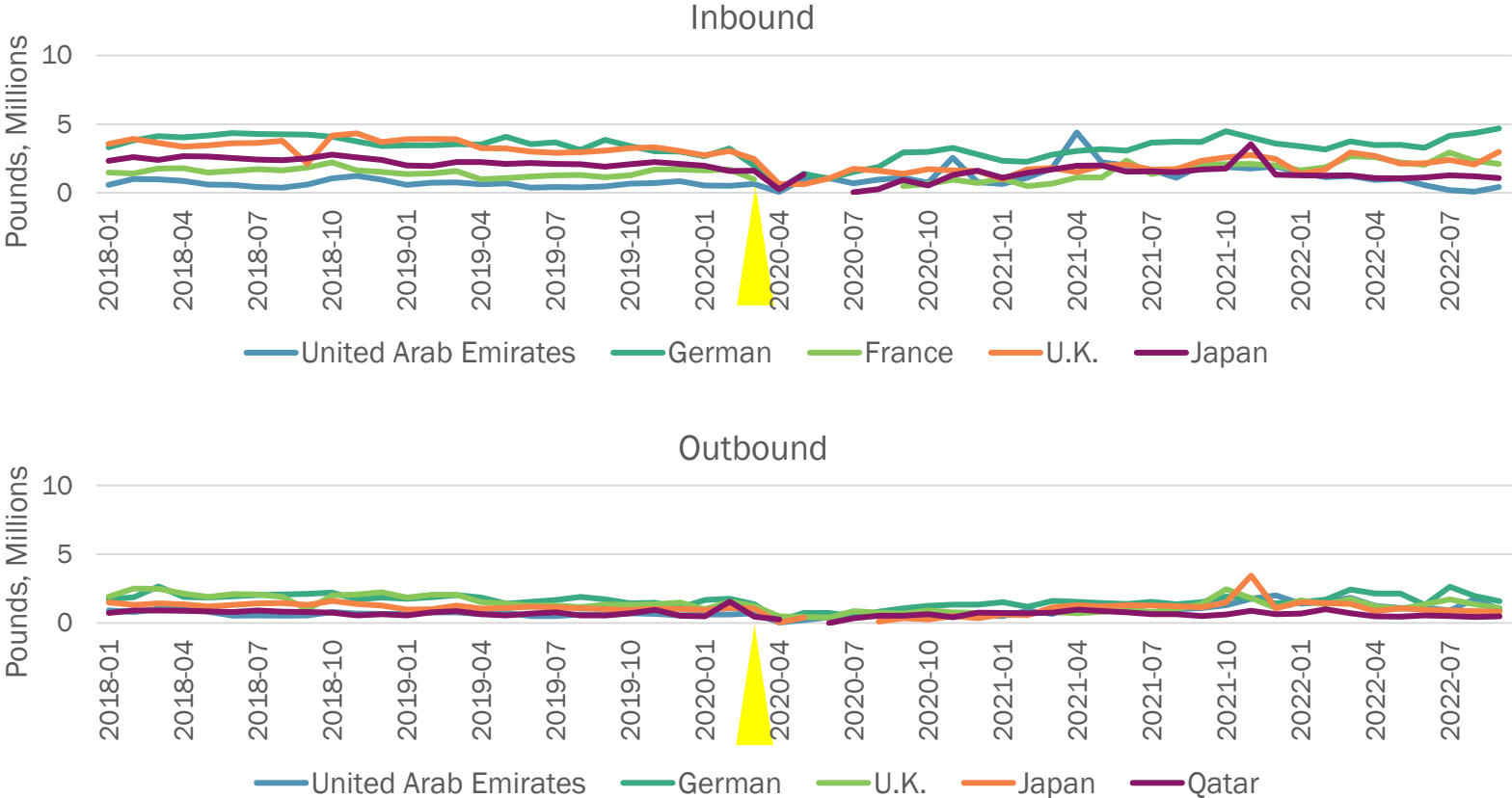


Air Freight (Top 5 States) Washington-Baltimore Airports



Source: U.S. Bureau of Transportation Statistics, Air Cargo <https://www.bts.gov/topics/freight-transportation/air-cargo>
 Notes: 9 months of data observed from BTS in 2022

Air Freight (Top 5 Countries) Washington-Baltimore Airports

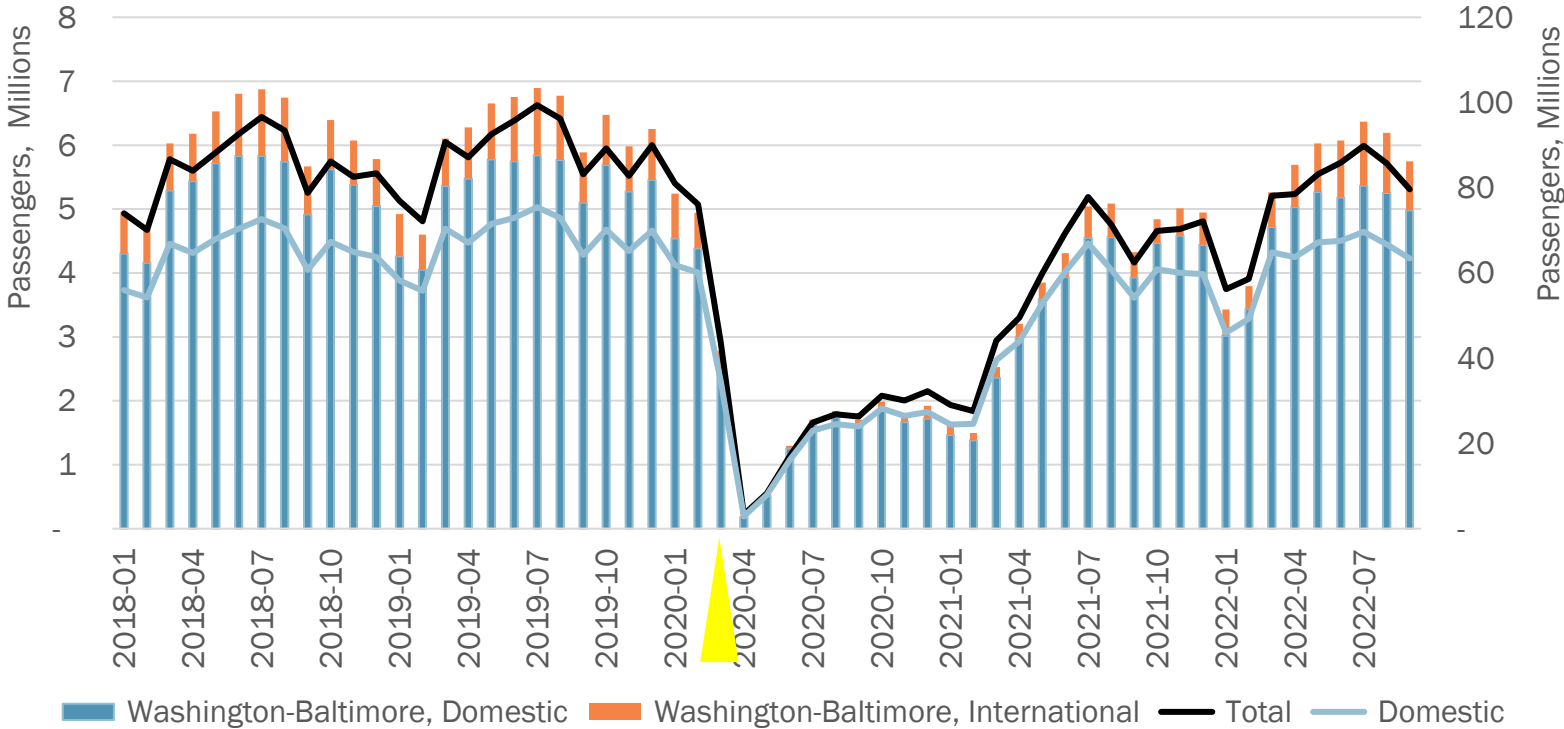


Source: U.S. Bureau of Transportation Statistics, Air Cargo <https://www.bts.gov/topics/freight-transportation/air-cargo>
 Notes: 9 months of data observed from BTS in 2022.

Part 3. Air Passenger Traffic



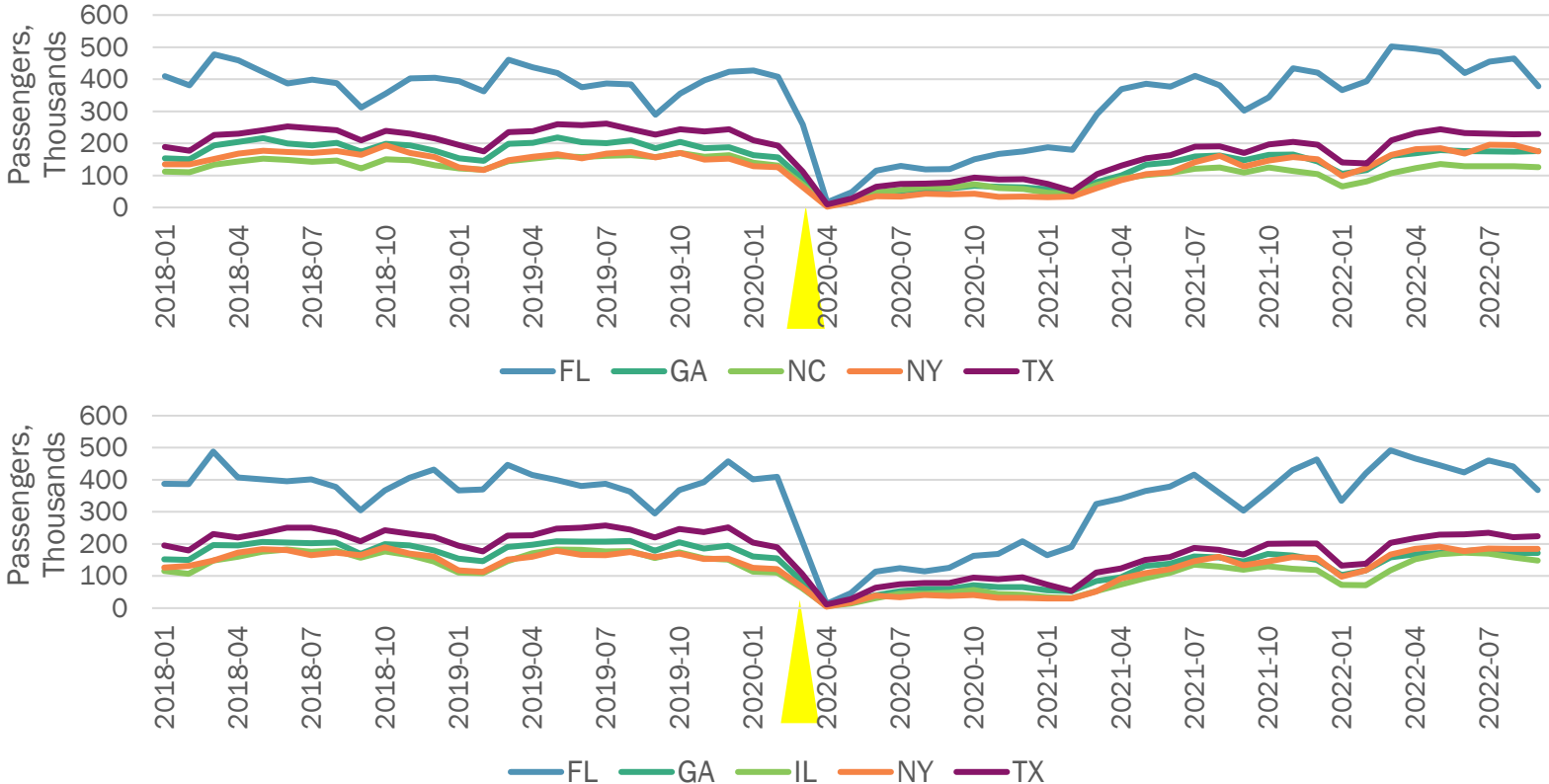
Air Passengers (Enplanements) Washington-Baltimore Airports



Source: U.S. Bureau of Transportation Statistics, Air Cargo <https://www.bts.gov/topics/freight-transportation/air-cargo>
 Notes: 9 months of data observed from BTS in 2022.

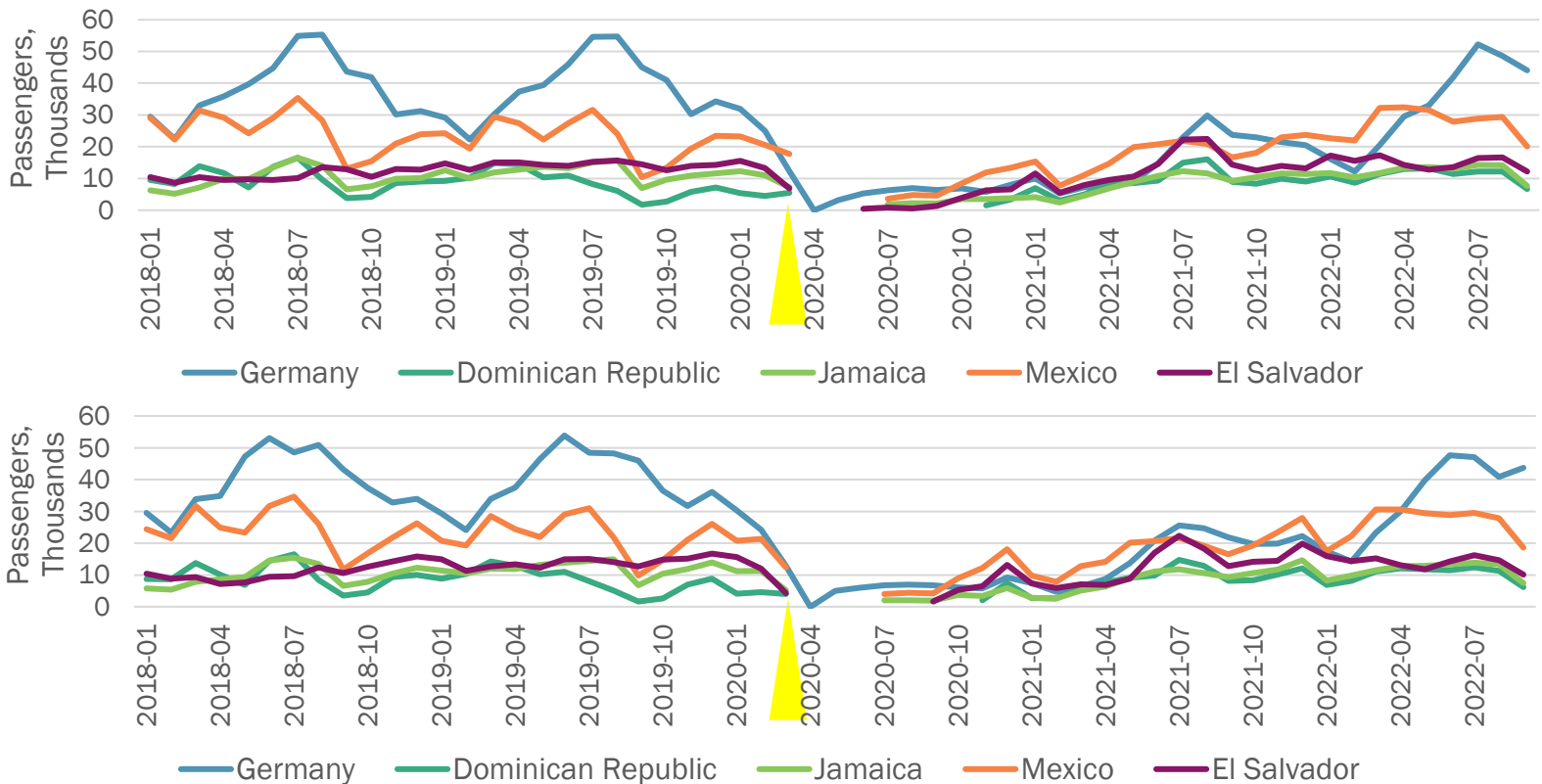
Air Passengers (Top 5 States)

Washington-Baltimore Airports



Source: U.S. Bureau of Transportation Statistics, Air Cargo <https://www.bts.gov/topics/freight-transportation/air-cargo>
 Notes: Only 9 months of data observed from BTS in 2022

Air Passengers (Top 5 Countries), Inbound Washington-Baltimore Airports



Source: U.S. Bureau of Transportation Statistics, Air Cargo <https://www.bts.gov/topics/freight-transportation/air-cargo>
 Notes: only 9 months of data observed from BTS in 2022.



Key Takeaways

- The arrival of the pandemic aligned with a shock to several sectors including but not limited to employment, traffic levels, and the global supply chain. E-commerce grew throughout this time period.
- Across the United States, freight declined in 2020 and recovered by 2022; this is also observed in the Washington-Baltimore region.
 - The share of freight shipped by air in the Washington-Baltimore remained steady during these years
 - The quantity of outbound pharmaceutical commodities gradually increased for the Washington region
- Air passenger trips were highly impacted by the pandemic and have returned to pre-pandemic levels. This applies both to overall levels as well as to the top 5 inbound and outbound states and countries.



Zhuo Yang

Transportation Data Analyst

(202) 962-3370

zyang@mwkog.org

mwkog.org/tpb

Metropolitan Washington Council of Governments

777 North Capitol Street NE, Suite 300

Washington, DC 20002



National Capital Region
Transportation Planning Board