

TOWARD A UNIFIED PLANNING FRAMEWORK THROUGH 2030

Optimizing High-Capacity Transit & Elevating Equity Emphasis Areas

Chuck Bean
COG Executive Director

Transportation Planning Board
September 22, 2021



Unified planning framework for 2030



Background: Region's Multi-Sector Goals

- Housing Targets (2019)
 - 320,000 more needed 2020-2030
 - 75% located near High-Capacity Transit and Regional Activity Centers
 - 75% affordable to low- and middle-income households
- Environmental Goals
 - Meet or exceed federal air quality standards
 - Reduce GHG by 50% and be a Climate Resilient Region (2020)
- Transportation Goals
 - Affordable transportation options for all trip purposes
 - Accessibility to jobs, services, and amenities
 - Protects natural environment and is sustainable

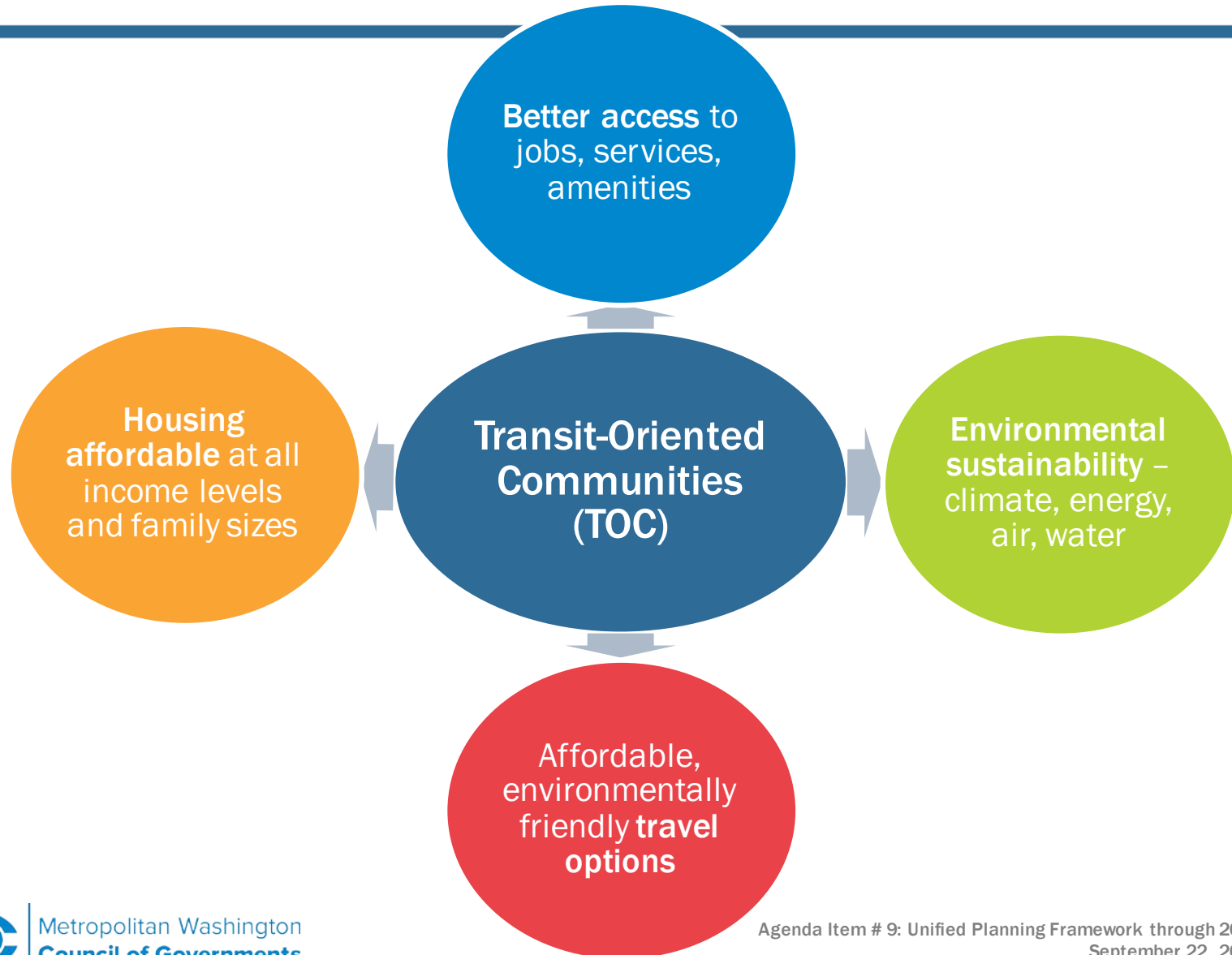


Transit-Oriented Communities (TOCs)

- An effective strategy for advancing our regional goals:
 - Communities!
 - Mixed-use & Mixed-Income.
 - 1/2 Mile; Extend Optimization.
 - Leverage major investments in transit.
 - Co-benefits related to prosperity, accessibility, livability, and sustainability – and equity!



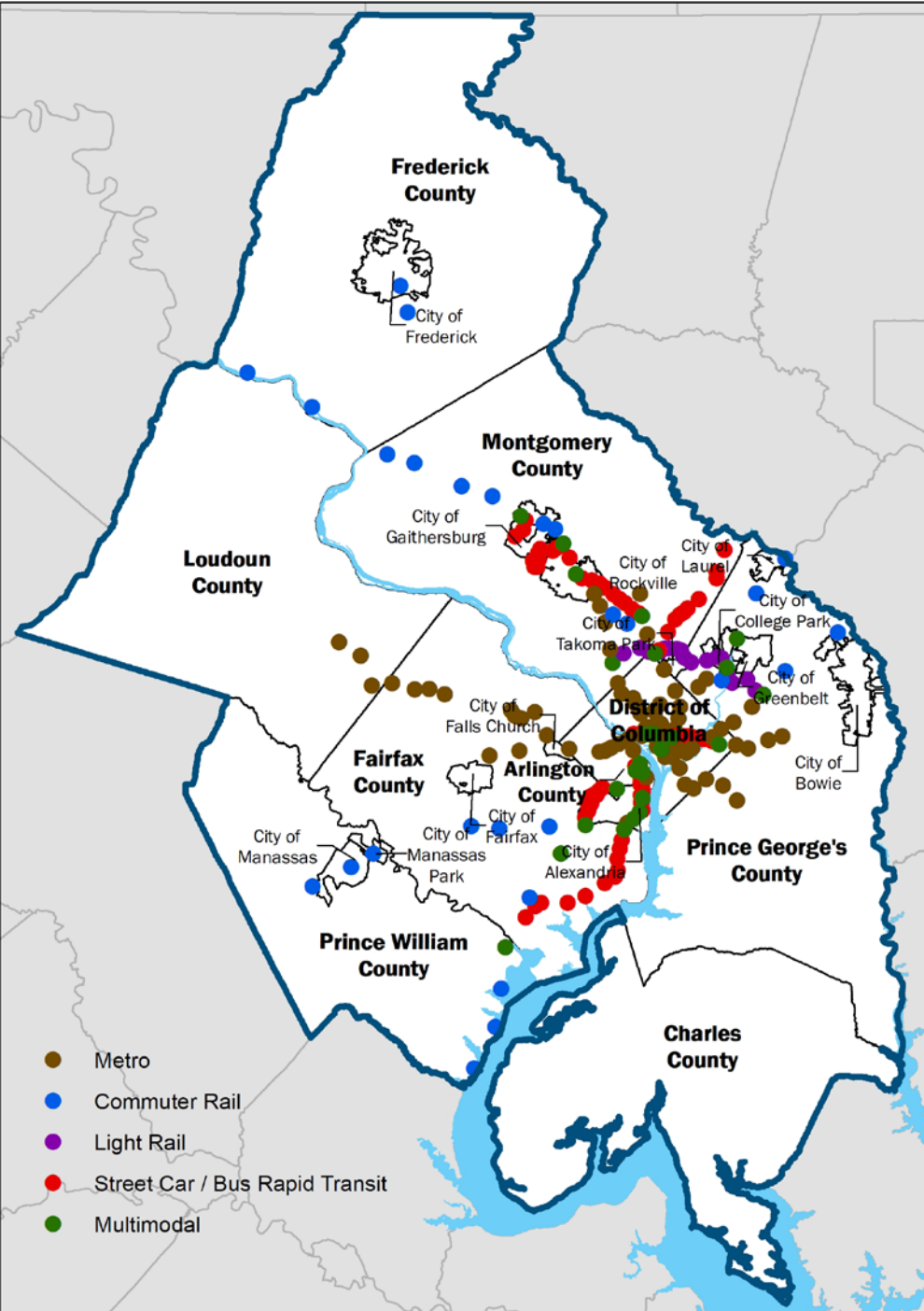
Synergies of Varied Actions



Optimize 225 High-Capacity Transit (HCT) Station Areas

Locations around Metrorail, Commuter Rail, Light Rail, Bus Rapid Transit (BRT), and Streetcar.

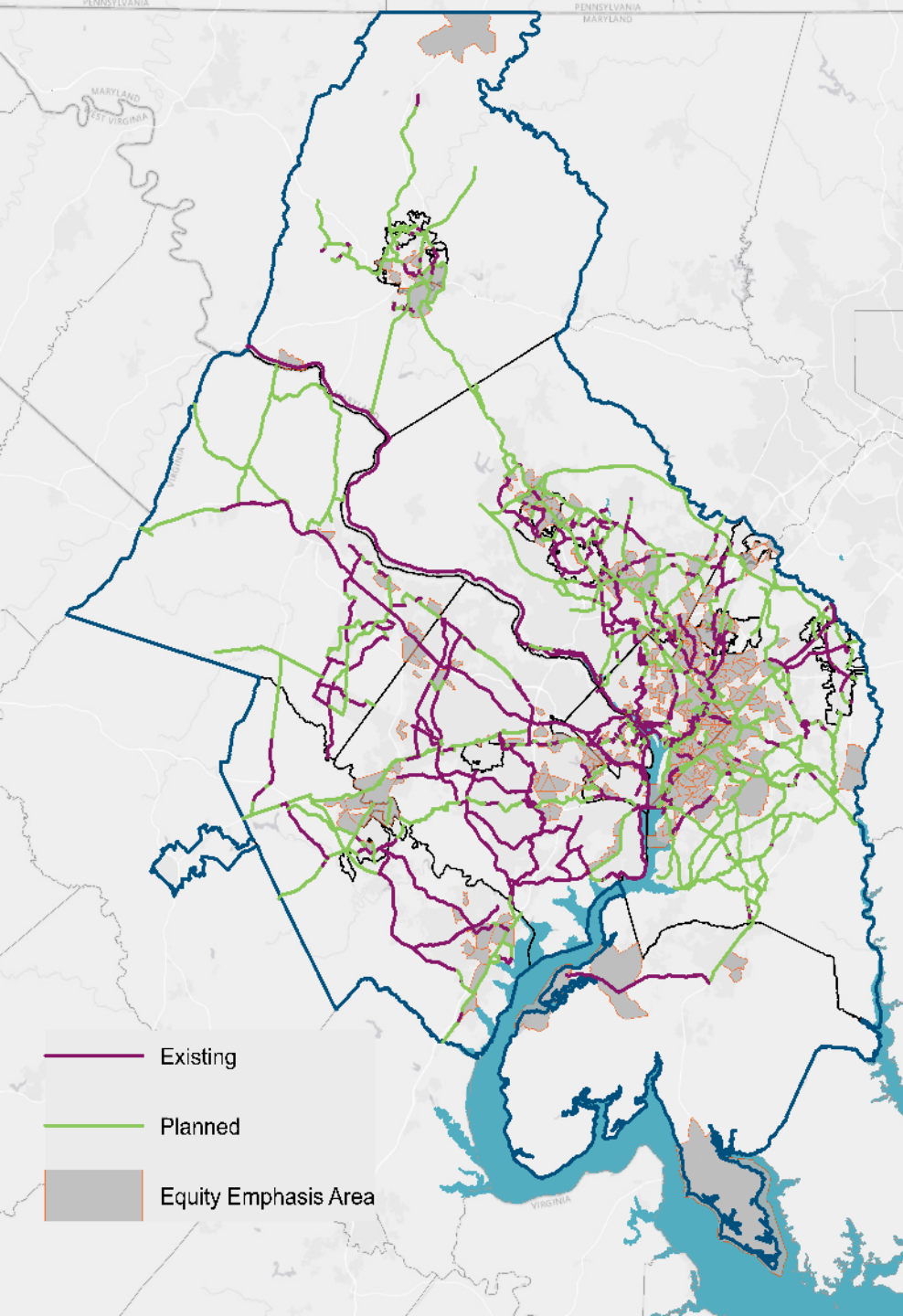
mwcog.org/highcapacitytransit



October COG Board Action #1: Optimize HCTs to create TOCs

Resolution:

- Prioritize planning and investments.
- Commit to optimize land use (mixed-use/ mixed-income; jobs, housing, services, amenities).
- Commit to optimize transportation (access to HCTs and connect TOCs).
- Commit to complete NCTN and improve access to HCTs.



Example: National Capital Trail Network (NCTN)

- Long-distance, off-street trails accessible for people of all ages and abilities and suitable for both transportation and recreation.
- 180 of 225 HCTs are within half a mile.
- 55% of the network is unbuilt.

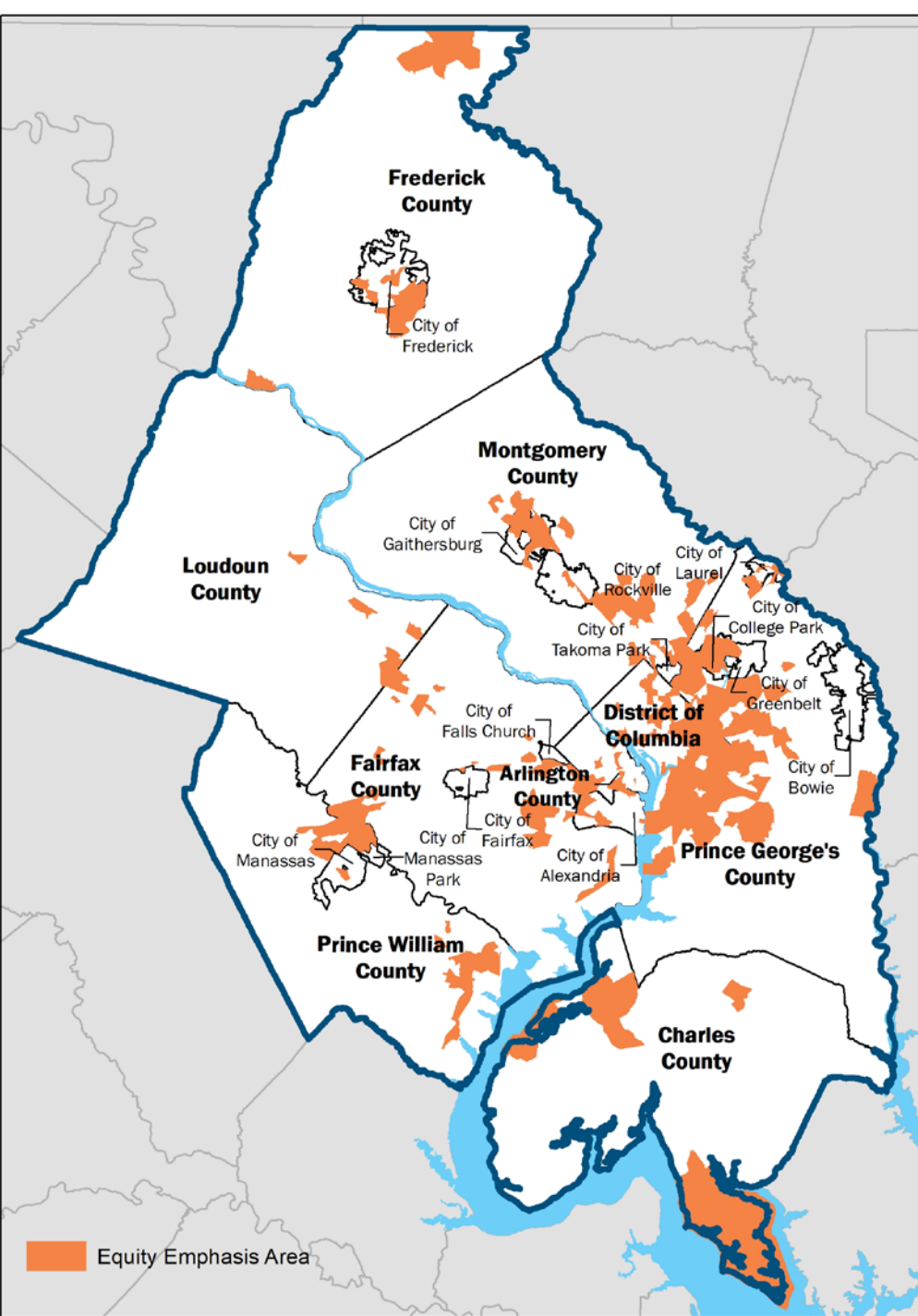
Expressed Commitment to Equity

“The board affirms that **our work together** as the Metropolitan Washington Council of Governments **will be anti-racist and will advance equity**;

The board affirms that **equity will be woven into COG’s Region Forward Vision to ensure a more prosperous, accessible, livable, sustainable, and equitable future for all area residents** and throughout COG’s analyses, operations, procurement, programs, and priorities.”

COG Board of Directors, July 2020





Elevate 350 Equity Emphasis Areas (EEAs)

Areas with high concentrations of underserved groups.

mwcog.org/equityemphasisareas

Weaving EEAs into our work

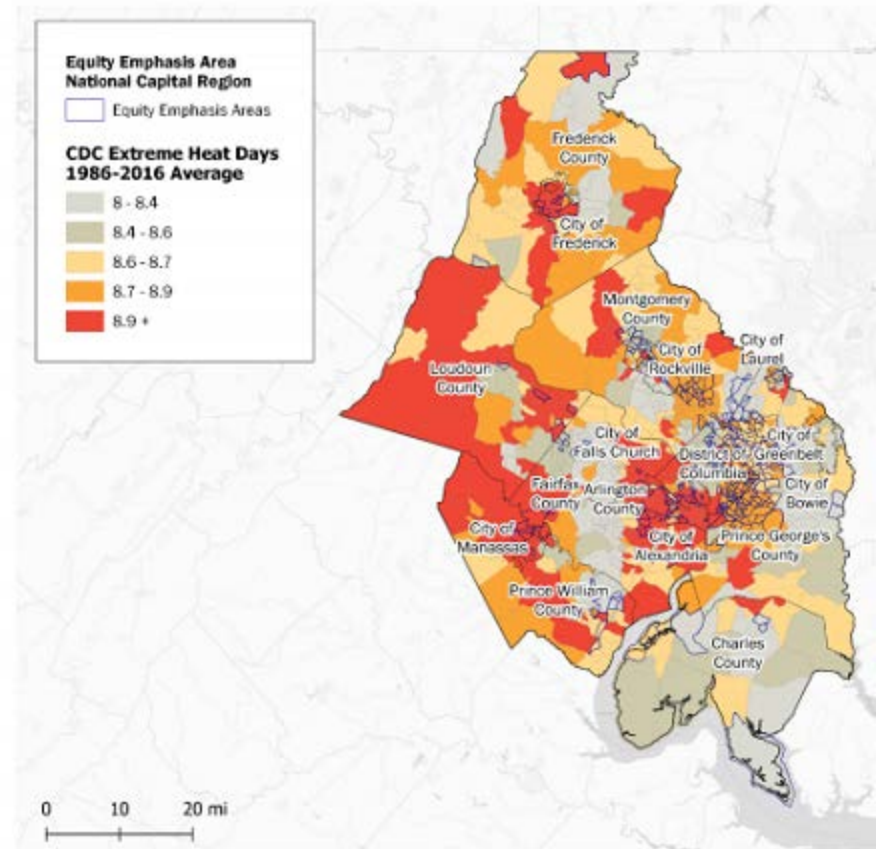
- *Uneven Opportunities:*
Life expectancy varies by as much as 28 years across the region.
- The findings of this study can be examined through the lens of equity by focusing on EEAs.



Weaving EEAs into our work

- *Metropolitan Washington 2030 Climate and Energy Action Plan* identified equity-focused actions the region must take in pursuit of its climate goals.
- Specifically, prioritizing sustainable energy access for all residents.

Figure 10: Extreme Heat Days and Equity Emphasis Areas



October COG Board Action #2: Elevate EEAs to integrate equity

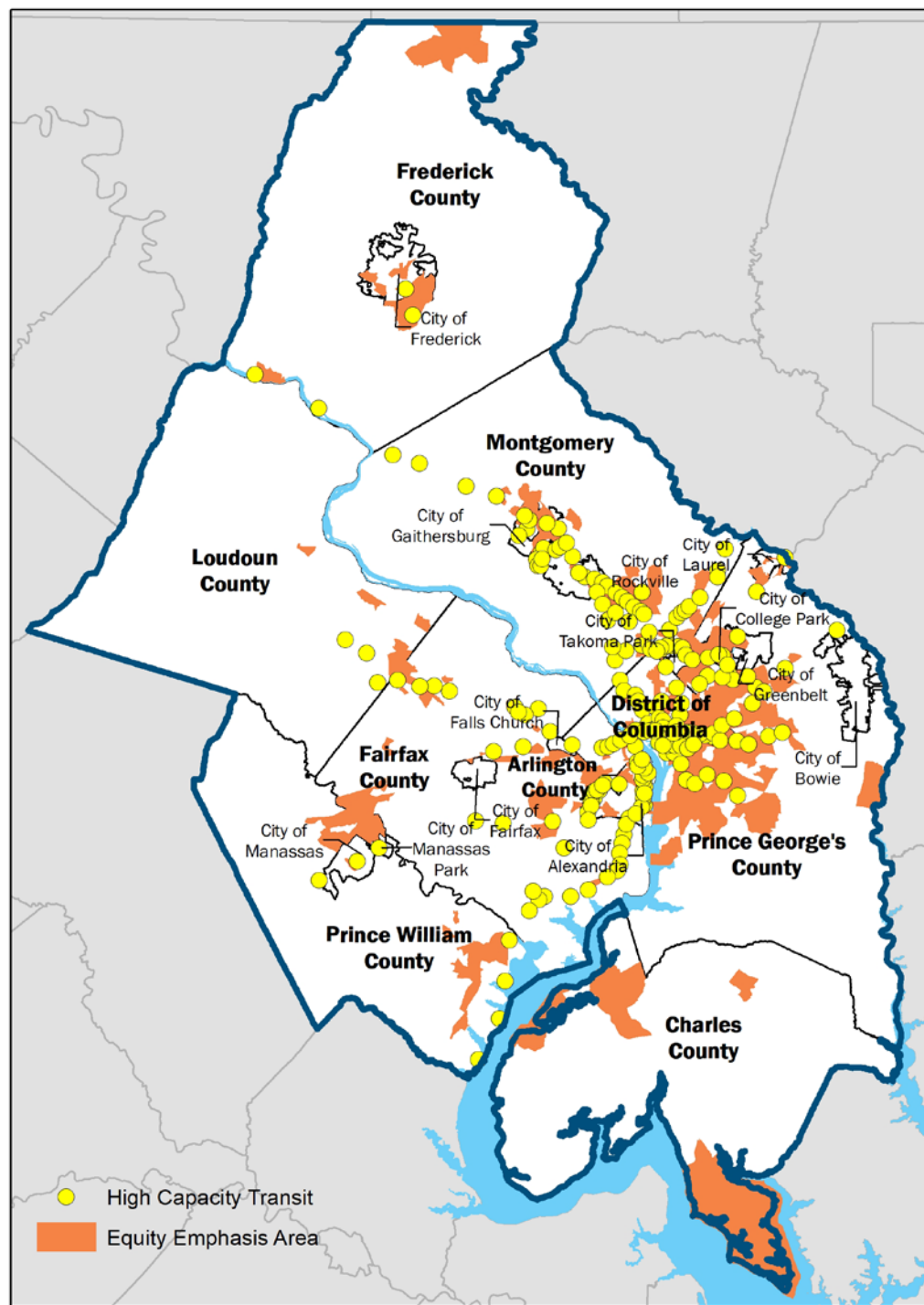
Resolution:

- Prioritize EEAs in planning & decision making.
- Explore and implement strategies to incorporate EEAs into COG's work.
- Complete the NCTN to enhance mobility and accessibility to EEAs.



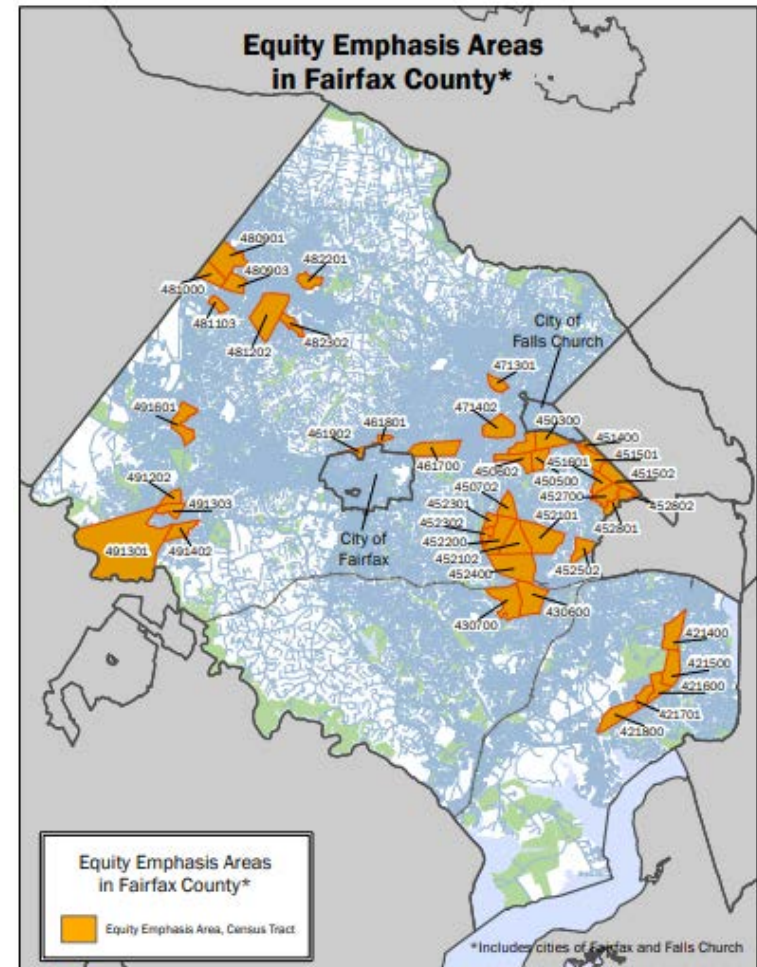
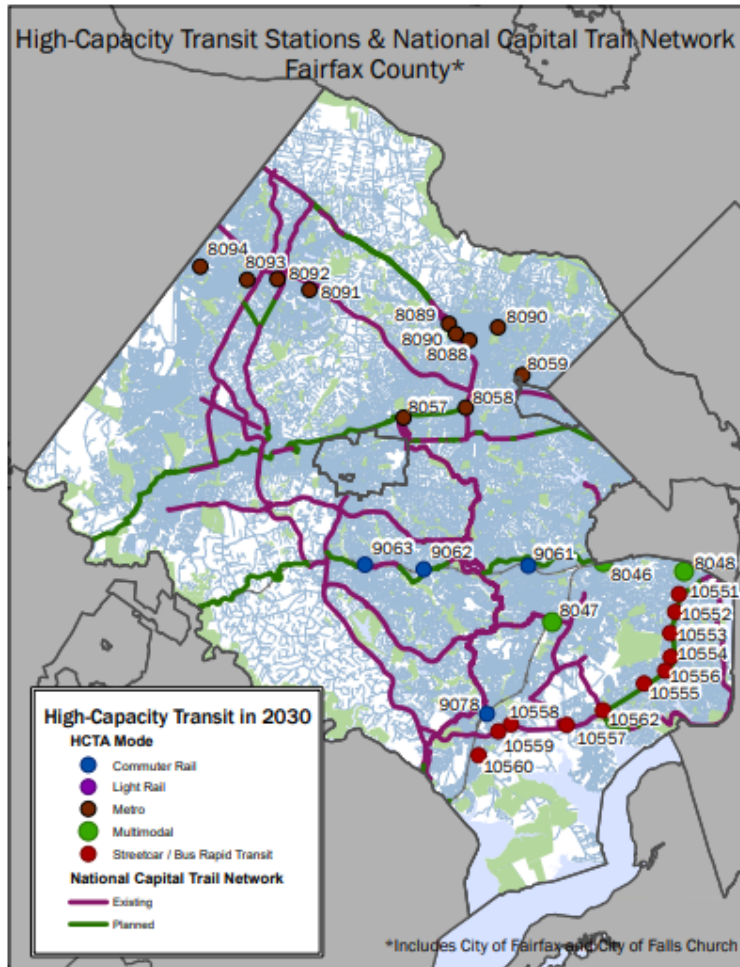
High-Capacity Transit Station Areas & Equity Emphasis Areas, 2030

mwcog.org/HighCapacityTransit



Metropolitan Washington
Council of Governments

Example: Fairfax County HCTs & EEAs



Unified planning framework for 2030



Chuck Bean

COG Executive Director
(202) 962-3260
cbean@mwcog.org

mwcog.org

777 North Capitol Street NE, Suite 300
Washington, DC 20002



Metropolitan Washington
Council of Governments