

ITEM 10 – Information
March 21, 2024

Visualize 2050: Briefing on Project Inputs and Draft Scope of Work
for the Air Quality Conformity Analysis for the Visualize 2050
National Capital Region Transportation Plan and
the FY 2026-2029 Transportation Improvement Program (TIP),
and Work Session Recap

Background: The board will receive a briefing summarizing the project inputs submitted by December 29, 2023 for inclusion in the Visualize 2050 Air Quality Conformity (AQC) process. Given the federal status of the TPB’s planning area (designated as “non-attainment” of the federal 2015 Ozone Standard), the projects proposed to be included in the Visualize 2050 financial plan and TIP must undergo a regional air quality conformity determination analysis. The TPB’s National Capital Region Transportation Plan and FY 2026-2029 Transportation Improvement Program must be updated, reviewed, and approved by federal agencies upon TPB approval scheduled for June 2025. The TPB will be briefed on the projects submitted for the update and the draft scope of work for the air quality conformity analysis. The 30-day public comment on the inputs and scope is scheduled from March 1 to March 30, 2024. In addition, staff will review the work session held prior to the TPB meeting, noting highlights from the discussion.



MEMORANDUM

TO: Transportation Planning Board
FROM: Cristina Finch, Principal Transportation Planner
SUBJECT: Public Comment Materials Package: Projects Proposed for Inclusion in the Air Quality Conformity Analysis of Visualize 2050 and Air Quality Conformity Analysis Scope of Work
DATE: March 14, 2024

The Board originally received this memo via email on March 1, 2024. Please keep in mind that this is also an interagency review period and due to the sheer volume of data, staff have been continuing to verify information published for this comment period and make corrections to supplementary materials during this process. In this memo, TPB staff has updated the report on new projects for Visualize 2050 found on page 7; links to materials have been updated, and the rest of the memo is unchanged. The two key documents that will be acted on by the Board in May have remained unchanged during this comment period.

This is the proposed air quality conformity analysis project list for the Visualize 2050 National Capital Region Transportation Plan. These projects have been released for public comment on March 1 through March 30, 2024, and staff have prepared a [MetroQuest public comment form](#) to facilitate public engagement and input. The attached materials present the projects proposed to be included and the scope of work for regional air quality conformity analysis. Upon TPB approval in May, the conformity analysis can begin. Visualize 2050 is scheduled for approval in June 2025. These inputs and analysis also support development of the FY 2026-2029 Transportation Improvement Program (TIP).

This public comment period is specifically focused on the air quality conformity inputs of Visualize 2050, which is a subclass of all the numerous transportation projects in the region and includes only projects of regional significance that may impact the air quality conformity analysis which follows requirements in the 1990 Clean Air Act Amendments. The project list is fiscally constrained in that projects can be implemented using revenue sources that are already committed, available, or reasonably expected to be available in the future regardless of their potential funding source.

Materials released for comment include all the following, which are accessible via the Visualize 2050 website visualize2050.org or via the COG comment page at <https://www.mwcog.org/TPBcomment/>.

- **Air Quality Conformity Network Input Tables** reflect every regionally significant for air quality project that will be analyzed. The table identifies changes in blue highlight (i.e. deletions) and yellow highlight (e.g. additions, updates) to the 600+ project conformity records submitted by member agencies since the adoption of the 2022 update to the Visualize 2045 plan. *This list does not include ongoing or candidate projects that are not regionally significant for air quality.*
- **Air Quality Conformity Analysis Scope of Work** which provides additional technical information to be used and outlines the work tasks to be performed in the analysis.

These two documents, the Air Quality Conformity Input Table and the Air Quality Conformity Analysis Scope of Work, are what the Board will be asked to approve in May.

Additional materials to help educate and provide context include:

- Project summary table which includes links to detailed information packets for each project to be completed in 2026 or later
- Mapping included in the [MetroQuest public comment form](#)
- State responses to the summary of public comments received during the 2023 comment period on projects undergoing re-evaluation

BACKGROUND

On February 15, 2023, the development of Visualize 2050 kicked off with the Transportation Planning Board approving the Visualize 2050 Technical Inputs Solicitation and inputs to the Transportation Improvement Program, thus setting the schedule for their approval.

Following the direction from TPB's resolution R19-2021 which called for a "zero-based budgeting" approach to update projects as part of the Visualize 2050 Technical Inputs Solicitation, TPB and agency staff have conducted a process to re-examine the current Visualize 2045 project list and resubmit an updated mix of projects supported by updated revenue and expenditure estimates for operations, maintenance, and capital projects, as well as transit service and fare inputs over the next 25 years. The expectation is that member agencies have considered TPB's previously conducted scenario analyses and selected this updated project mix to better advance the region's goals.

During this project re-examination period, TPB staff launched a supplemental public comment form to collect project-specific comments on the Visualize 2045 project list. In addition, staff collected comments about Visualize 2050 via email, voicemail, and letter. This feedback was shared monthly with the TPB and Technical Committee as comments were received during 2023. A final comment summary was prepared and presented to the TPB in December 2023. The states have provided a response to the comments which are attached to this memo.

In March 2023, TPB staff hosted three virtual facilitated listening sessions, for the staff of its member agencies, to support the agencies' work on developing project inputs for Visualize 2050. These sessions offered an opportunity for agency staff to hear about the types of projects the TPB would like to see proposed to be included in Visualize 2050, including which of the TPB goals and priorities are favored. Transportation agencies presented their processes for re-examining the projects in the current transportation plan and developing new projects to be proposed for inclusion. These sessions were all virtual and held on the following dates: District of Columbia on Monday, March 27; Maryland on Thursday, March 30; and Virginia on Wednesday, March 29, 2023.

This public comment period is specifically focused on the air quality conformity inputs of Visualize 2050 and includes transportation projects of regional significance that may impact the air quality conformity analysis requirements under the 1990 Clean Air Act Amendments. The project list is fiscally constrained in that projects can be implemented using revenue sources that are already committed, available, or reasonably expected to be available in the future regardless of their potential funding source.

After the comment period closes on March 30, 2024, the next steps are to share comments with the TPB at the April meeting, and then for the TPB to approve projects for inclusion in the air quality conformity analysis and the conformity scope of work at their May meeting.

This memo summarizes project submissions and provides all the information which has been released for a 30-day public comment period on March 1, 2024.

SUMMARY OF PROJECT SUBMISSIONS

The reevaluation and resubmission of all projects into Visualize 2050 is aimed at developing a list of projects for implementation by the member agencies that would better advance the TPB’s regional goals and policy priorities, and that would better reflect the findings from various scenario studies conducted by the TPB. These goals are Safety, Maintenance, Reliability, Affordable and Convenient, Efficient System Operations, Environmental Protection, Resilient Region, and Livable and Prosperous Communities.

Based on the responses provided by agencies on how the regionally significant for air quality projects support the 10 federal planning factors, conclusions can also be made on how well these projects support the TPB goals. The table below shows how the eight TPB goals align with federal planning factors.

Federal Planning Factors	TPB Goals
A. Support the economic vitality of the metropolitan area, especially by enabling global competitiveness, productivity, and efficiency	Livable and Prosperous Communities
B. Increase the safety of the transportation system for motorized and nonmotorized users	Safety
C. Increase the security of the transportation system for motorized and nonmotorized users	Safety
D. Increase the accessibility and mobility of people and for freight	Affordable and Convenient / Reliability
E. Protect and enhance the environment, promote energy conservation, improve the quality of life, and promote consistency between transportation improvements and state and local planned growth, housing, and economic development patterns	Environmental Protection
F. Enhance the integration and connectivity of the transportation system, across and between modes, for people and freight	Affordable and Convenient/ Reliability
G. Promote efficient system management and operation	Efficient System Operations
H. Emphasize the preservation of the existing transportation system	Maintenance
I. Improve the resiliency and reliability of the transportation system and reduce or mitigate stormwater impacts of surface transportation	Resilient Region
J. Enhance travel and tourism	Livable and Prosperous Communities

The attached project summary table provides information from agencies on how they expect implementation of each individual project to support TPB goals. From the information provided, improving reliability, affordability, and convenience are key goals being advanced by the projects, as more than seventy-five percent of projects are noted as responding to these goals. Especially for road projects of all types and across the region, improving safety was nearly always noted, these include road widening, extension, improvements, and capacity reductions projects. Finally, for transit projects, in addition to making the system more reliable, convenient, and affordable, projects were also often noted for improving livability and support creating more prosperous communities. Again, a full summary of the TPB Goals met by the project submissions can be found in the attached project summary tables.

VISUALIZE 2050 VS. VISUALIZE 2045

The Visualize 2045 plan referenced the policy elements the TPB had adopted over a period of time (1998 onwards), and the project mix was a result of minor updates to the project list building on the previous plan. Visualize 2050 is substantively different in two major ways: first, the TPB synthesized all of its previous policy elements into a unified set of regional planning policy priorities to inform the type of projects its member agencies would fund, and second, the TPB asked all its member agencies to take back and re-examine all of the projects in its most recent long-range plan, Visualize 2045, and submit a revised set of projects that would better advance the TPB's planning priorities. The TPB recognized that some of the projects in Visualize 2045 were already far along in their development and implementation, and that those projects would continue to be in this new plan.

The following section highlights some of the proposed projects identified to affect the transportation network's capacity that particularly relates to two broad planning priorities, while also summarizing the changes in the project mix relative to Visualize 2045. This list only includes projects with completion dates later than 2025.

TPB PRIORITY STRATEGIES IMPLEMENTED BY VISUALIZE 2050 PROJECTS

The following two priority strategies are implemented through several projects noted below as the region strives to attain its transportation goals.

Expand the express highway network, with rapid transit, and allow carpool/vanpool ride free

The following projects reflect this priority strategy and allow for rapid transit and carpool/vanpool ride free use.

- 8 projects total
 - I-270 Express Toll Lanes Widening: I-270 Spur to I-370
 - I-495/I-270Y (West Spur) Express Toll Lanes Widening: I-270 to George Washington Memorial Parkway
 - I-495 Express Lanes Truck Access: American Legion Bridge to I-95/I-395 Interchange
 - I-95/I-495 Southside Express Toll Lanes (SEL): Springfield Interchange to MD 210
 - I-495 Express Toll Lanes Northern Extension (NEXT): South of Old Dominion Drive to American Legion Bridge
 - I-495 Express Toll Lane Ramps: at Dulles Connector Road and Dulles Toll Road

- I-95 Express Lanes Truck Access: I-95 Springfield Interchange to I-95/Route 17 Interchange
- I-95 New Bi-Directional Operation Express Toll Lanes with Widening: Turkeycock Run to Optiz Boulevard

Increase frequency and capacity of transit by expanding Bus Rapid Transit (BRT) and Transitways

- 15 projects total
 - Maryland
 - MD 355 New BRT Expansion from East-West Highway (MD 410) to Clarksburg Road
 - New Purple Line Transitway: Bethesda to New Carrollton
 - North Bethesda Transitway New BRT Expansion from Montgomery Mall Transit Center to North Bethesda Metro Station
 - Randolph Road New BRT: from US 29 to Rockville Pike (MD 355)
 - Viers Mill Road New BRT Expansion from Montgomery College, Rockville to Wheaton Metro Station
 - District of Columbia
 - Benning Road Streetcar Expansion from Oklahoma Avenue NE to Benning Road Metro Station
 - Georgia Avenue NW Capacity Reduction for New Bus Lanes: Eastern Avenue to Barry Place NW
 - Southern Avenue SE Northbound Capacity Reduction for New Bus/Bike Lane: South Capitol Street SE to Barnaby Road SE
 - Virginia
 - Crystal City Transitway Expansion from Crystal City Metro Station to Pentagon City Metro Station
 - Duke Street Transitway New Bus Lane from King Street Metro to Fairfax County Line
 - Landmark Transit Center New BRT at Duke Street and Van Dorn Street
 - US 1 New BRT from Ft. Belvoir to Huntington Metro Station
 - West End Transit Way New BRT from Van Dorn Street Metro Station to Pentagon Metro Station
 - Potomac Avenue Capacity Reduction for New Bus Lane: Potomac Avenue to Arlington/Alexandria Line

Additionally, implementing agencies have indicated that most of the 150+ projects that are to be completed in 2026 or later include bicycle and pedestrian accommodations. Several projects, because of their nature, are not able to incorporate bicycle/pedestrian accommodations.

	Number of conformity-impacting projects (2026 & later completion)	Number of conformity-impacting projects reported to include bicycle/pedestrian accommodations
Transit	25	11
DC	17	17

Maryland DOT	17	8
Maryland Secondary	6	6
Virginia DOT	44	30
Virginia Secondary	45	40

CHANGES SINCE VISUALIZE 2045 ADOPTION

This section outlines the major projects from Visualize 2045 that have been completed, resubmitted for inclusion and continuing in Visualize 2050, and have not been resubmitted and not continuing in Visualize 2050.

- **Visualize 2045 major projects that are completed**
 - H St. and I St. Bus lanes Phase 2 (T3212)
 - 16th St. Bus Priority Improvements (T6638)
 - Metro Silver Line (Dulles Corridor Metrorail Project) (CE1981)
 - Potomac Yard Metro Station (CE3013)
 - I-66 Corridor Enhanced Bus Service (CE3448)
 - I-66 Corridor Park and Ride Lots in Haymarket, University Blvd. in Gainesville, and Balls Ford Road in Manassas (CE3448)
 - I-295 Interchange at Malcolm X Boulevard (T5723/CE2860)
 - Various Capacity Reductions for Bicycle Lanes in DC
 - South Capitol Street Corridor: Frederick Douglass Bridge (T3423)
 - I-70 at Meadows Road Interchange Reconstruction (CE2250)
 - MD85 Buckeystown Pike Widening: Crestwood Drive/Shockley Drive to Spectrum Drive (T6483)
 - I-66 HOT (Outside Beltway) Widen/Construct HOT Lanes and bus service (CE3448/T6540)
 - I-66 Extend existing westbound acceleration/deceleration lane and add additional lane eastbound (CE3484)
 - I-95/Fairfax County Parkway enhanced interchanges for BRAC (CE2668)
 - I-95 add southbound auxiliary lane (T6682)
 - I-495 interchange flyover ramps (CE3186)
 - Leesburg Pike (VA 7) Widening: Reston Avenue to Jarrett Valley Drive (CE2105/T6539)
 - Nokesville Road (VA 28) Widening: Fitzwater Drive (VA 652) to Vint Hill Road (VA 215) and Godwin Drive to Linton Hall Road (VA 619) (CE2045/T12001)
 - Sully Road (VA 28) Widening: I-66 to VA 7 (CE1734)
- **Number of Visualize 2045 major projects that are continuing in Visualize 2050**
 - Major Highway Projects 65 projects continuing
 - Major HOT/HOV/Toll Lane Projects 10 projects continuing
 - Major Transit Projects 22 projects continuing
- **Major projects in Visualize 2045 not continuing in Visualize 2050**
 - Maryland
 - I-270 Express Toll Lanes Construction (2 in each direction) from north of I-370 to I-70 (23 miles)

- I-95 Express Lanes Construction (2 lanes in each direction) from Springfield Interchange to MD 210 (10 miles)
- VA 7 Widening (5 to 6 lanes) from VA 9 to West Market Street (2 miles)

AIR QUALITY CONFORMITY ANALYSIS CONFORMITY TABLE AND SCOPE OF WORK

The air quality conformity network inputs table highlights every segment of every project that will be included in the travel demand model and used in the air quality conformity analysis. The scope of work provides a context in which to perform the conformity analyses and presents an outline of the work tasks required to address all regulations currently applicable. The scope of work includes all technical inputs necessary to conduct the analysis for Visualize 2050 and the FY 2026-2029 TIP in compliance with the Air Quality Conformity regulations. Key elements of the air quality conformity analysis technical inputs include existing and future demographic data as captured through land activity (Cooperative Forecasts Round 10), roadways, transit systems, vehicle fleet information, and travel statistics. Anticipated HOV/HOT use policies and roadway restrictions, such as truck prohibitions, are also included. The information outlined in the scope of work will be used in the travel demand forecasting model and motor vehicle emissions model to determine if the total on-road mobile source ozone emissions will be within EPA-approved levels.

PUBLIC COMMENT PERIOD

The project submissions for inclusion in the Air Quality Conformity Analysis of Visualize 2050 and the FY 2026-2029 TIP were released for public comment on March 1, 2024. The attached materials present a summary of the projects included in the technical submissions. The public comment period ends on March 30, 2024, at midnight.

Comments may be submitted by any of the following means:

Write: Christina Henderson, Chair
National Capital Region Transportation Planning Board
Metropolitan Washington Council of Governments
777 North Capitol Street NE, Suite 300
Washington, DC 20002-4239

Telephone: Call (202) 962-3262 to leave up to a 3-minute voice mail

Online: www.mwcog.org/TPBcomment

Email: TPBComment@mwcog.org

Please note:

The Metropolitan Washington Council of Governments (COG) operates its programs without regard to race, color, and national origin and fully complies with Title VI of the Civil Rights Act of 1964 and related statutes and regulations prohibiting discrimination in all programs and activities. For more information, to file a Title VI related complaint, or to obtain information in another language, visit Title

VI plan page (<https://www.mwcog.org/documents/2021/05/27/title-vi-plan-to-ensure-nondiscrimination-in-all-programs-and-activities-cog-tpb/>) or call (202) 962-3300.

El Consejo de Gobiernos del Área Metropolitana de Washington (COG) opera sus programas sin tener en cuenta la raza, el color, y el origen nacional y cumple con el Título VI de la Ley de Derechos Civiles de 1964 y los estatutos y reglamentos relacionados que prohíben la discriminación en todos los programas y actividades. Para más información, presentar una queja relacionada con el Título VI, u obtener información en otro idioma, visite la pagina del plan del Titulo VI (<https://www.mwcog.org/documents/2021/05/27/title-vi-plan-to-ensure-nondiscrimination-in-all-programs-and-activities-cog-tpb/>) o llame al (202) 962-3300.

Per COG policy, reasonable accommodations are provided upon request, which includes translation of the Title VI statement, policy, and complaint form. To read the Accommodations Policy in different languages, follow the links below:

Spanish - Español (https://www.mwcog.org/assets/1/6/Spanish_Accomodations_Policy1.pdf)

French - Français (https://www.mwcog.org/assets/1/6/French_Accomodations_Policy1.pdf)

Korean - 한국의 (https://www.mwcog.org/assets/1/6/Korean_Accomodations_Policy1.pdf)

Vietnamese - tiếng Việt

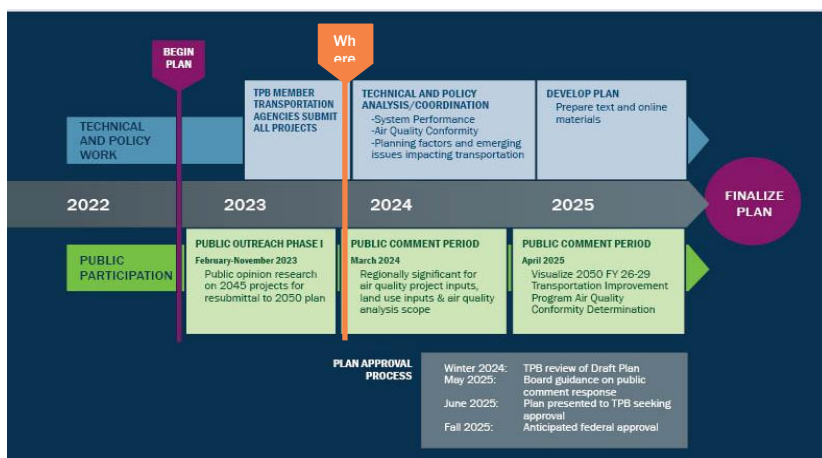
(https://www.mwcog.org/assets/1/6/Vietnamese_Accomodations_Policy1.pdf)

Amharic - አማርኛ (https://www.mwcog.org/assets/1/6/Amharic_Accomodations_Policy1.pdf)

Chinese - 中文 (https://www.mwcog.org/assets/1/6/Chinese_Accomodations_Policy1.pdf)

SCHEDULE

As shown in the following graphic, the Visualize 2050 development is entering the second of three public comment opportunities. This is a major milestone in the planning process with the region's most significant transportation projects under review. The TPB will take a key vote in the planning process in May 2024 enabling the continuation of modeling and analysis work as staff works toward draft plan release for public comment in April 2025 and final approval in June 2025.



ATTACHMENTS

The following attachments are included in this packet and available online via the links:

[Air Quality Conformity Network Input Tables](#)

[Air Quality Conformity Analysis Scope of Work](#)

[Project Summary Table](#)

[State response letters to 2023 public comments](#)

VISUALIZE 2050 AIR QUALITY CONFORMITY NETWORK INPUTS (transit)

DRAFT 2/29/2024

								Projected
PIT Project ID	ConID	Scenario	Improvement	Facility	From	To	Completion Date	
DDOT								
1	6103	794 UHOWEXT	Implement	DC Circulator Expansion	Rosslyn to Dupont Circle Route	Extension to U St./Howard University	2026	
2	T5754	613 DCSTHST2	Construct	Benning Road Streetcar Extension	Oklahoma Avenue NE	45th Street/Benning Road Metro	2026 2030	
3	CE3081	610 DCSTGTWN	Implement	Union Station/Georgetown Streetcar	K Street/34th Street NW	3rd Street/H Street NE	2040	
4	T3212		Implement	H St. and I St Bus lanes Phase 2	13th St. NW	Pennsylvania Ave NW	2021 completed	
5	3212 T13580	7835 32666	Study Implement	H St. NW Bus Improvements	14th St. NW	North Capitol St.	not coded 2022 completed	
6	CE3081		Construct	K St. NW Transitway	9th St. NW	21st St. NW	2025	
7	T13585	32690	Implement	U St. NW Bus Improvements	18th St. NW	9th St NW	2025	
9	3212 T13588	31057 31058 31059	Implement	8th St. SE Bus Improvements			2024	
10	T13583	32646	Implement	11th St. NW Bus Improvements	Pennsylvania Ave NW	G Street NW	2024	
11	T13583	32647	Implement	11th St. NW Bus Improvements	H Street NW	L Street NW	2024	
12	T13583	32648	Implement	11th St. NW Bus Improvements	L Street NW	E Street NW	2024	

NOTE: Shaded areas represent changes from the 2022 Update to Visualize 2045. Blue = removed. Yellow = added or changed.

VISUALIZE 2050 AIR QUALITY CONFORMITY NETWORK INPUTS (transit)

DRAFT 2/29/2024

	PIT Project ID	ConID	Scenario	Improvement	Facility	From	To	Projected Completion Date
13	T6638	989		Implement	16th St. Bus Priority Improvements	H St. NW	Arkansas Ave NW	2022 completed
14	T13590	32016		Implement	Florida Ave. NW Bus Improvements	9th Street NW	1st Street NE	2024
15	T13591	32016		Implement	Georgia Ave. NW Bus Improvements	Eastern Ave.	Barry Place NW	2026
16	3212 T13582	32595 32673		Study Implement	Minnesota Avenue SE Bus Improvements (southbound)	Nelson Pl SE	Burns St SE	not coded- 2023 completed
17	T13586	32728		Implement	Southern Ave SE Bus Improvements (NB)	South Capitol St SE	Barnaby Road SE	2026
MDOT/MTA								
18	CE3427- CE3787	617 15642	MARCFRQ	Implement	Brunswick Line Service Improvements			2029-2045
19	CE3427- CE3788	618 15646	MARCFRQ	Implement	Camden Line Service Improvements			2029-2045
20	CE1649	481	CCTBRT	Construct	Corridor Cities BRT	Shady Grove	Comsat	2035
21	CE3427- CE3855	619 34252	MARCFRQ	Implement	Penn Line Service Improvements			2029-2045
22	T2795	479	PURPLE	Construct	Purple Line Transitway	Bethesda	New Carrollton	2023 2027
Montgomery County								
23	CE3662		RANDBRT	Implement	Randolph Road BRT	US 29	MD 355	2040
24	CE3663 T3663	5062 963	NBETHBRT	Implement	North Bethesda Transitway BRT	Montgomery Mall Transit Center	White Flint	2030

NOTE: Shaded areas represent changes from the 2022 Update to Visualize 2045. Blue = removed. Yellow = added or changed.

**VISUALIZE 2050 AIR QUALITY CONFORMITY NETWORK INPUTS
(transit)**

DRAFT 2/29/2024

								Projected
	PIT Project ID	ConID	Scenario	Improvement	Facility	From	To	Completion Date
25	CE3424-CE3856 T6396		MD355BRT	Implement	MD 355 BRT	MD 410 East-West Highway	Clarksburg Rd.	2030
26	CE3103	485	VEIRSBRT	Implement	Veirs Mill Road BRT	MD 355 Rockville Pike Montgomery College, Rockville	MD 97 Georgia Ave. Wheaton Metro Station	2025 2030
27	CE3672 T12004	982	NHBRT	Implement	New Hampshire Ave. BRT	Colesville Park and Ride	Takoma Metro Station Fort Totten Metro Station	2045
28	CE1249	483	MCT7	Construct	Olney Transit Center	adjacent to or north of MD 108		2045
29	CE1253	487	TIGERVEIR	Construct	Veirs Mill Road Bus Enhancement	Rockville	Wheaton	2021 completed
30	CE3857	487		Construct	Great Seneca Transit Network Bus Service Improvements			2025
31				Construct	Md 193 (University Blvd) Bus Lanes	Amherst Ave	Dennis Ave	2024
VDOT/VDRPT								
32	T6727	1028		Construct	Long Bridge	Control Point RO (Arlington) Rosslyn (RO) Interlocking near Long Bridge Park in Arlington, Virginia	L'Enfant (LE) Interlocking near 10th Street SW in the District of Columbia	2030
33	CE3758-T11581	3680		Construct	VRE L'Enfant Station and 4th Track Improvements	L'Enfant Interlocking	Virginia Interlocking	2028
34	CE3708 T6673	1029		Construct	Alexandria 4th Track Project	Control Point Rosslyn (CFP RO) near milepost 110.1 south of the George Washington Parkway	Control Point Alexandria (CFP AF) near milepost 104.3 south of Telegraph Road	2028 2026

NOTE: Shaded areas represent changes from the 2022 Update to Visualize 2045. Blue = removed. Yellow = added or changed.

VISUALIZE 2050 AIR QUALITY CONFORMITY NETWORK INPUTS (transit)

DRAFT 2/29/2024

								Projected
	PIT Project ID	ConID	Scenario	Improvement	Facility	From	To	Completion Date
35	T6706	1030		Construct	Franconia to Occoquan 3rd Track Project	One mile north of the Franconia-Springfield VRE station (CFP 98.8)	Approximately 400 feet north of Furnace Road, just north of the Occoquan River (CFP 90.08)	2028
36	CE2832	504	VREFREQ	Implement	VRE Service Improvements (Reduce Headways)	Fredericksburg and Manassas lines		2035
37	CE2831	630		Construct	VPRA 3rd Track - RF&P	Arkendale, Stafford Co.	Powell's Creek, Prince William County	2024
38	CE2420-T12003	9841		Construct	Broad Run Expansion- 3rd Track Project	Broad Run	Manassas (Wellington Road)	2025 2027
39	CE1942	795	US1VABUS	Widen	US 1 (bus/right turn lanes)	VA 235 North	SCL Alexandria (I-95 Capital Beltway)	2035
40	CE3496 T6680	808	US1BRT	Construct	US 1 Richmond Highway Bus Rapid Transit (BRT)	Huntington Metro	Ft. Belvoir and to Woodbridge VRE	2030 2031
41	CE3521	861		Construct	Crystal City Transitway: Northern Extension - complete dedicated lanes	Crystal City Metro Station	Army Navy Drive Transit Station (Army Navy Dr halfway between Hayes St and Joyce St) Pentagon City Metro Station	2022 2026
42			MWAYEXT2	Construct	Crystal City Transitway: Southern Extension - complete dedicated lanes	South Glebe Road	Alexandria city line	2025

NOTE: Shaded areas represent changes from the 2022 Update to Visualize 2045. Blue = removed. Yellow = added or changed.

VISUALIZE 2050 AIR QUALITY CONFORMITY NETWORK INPUTS (transit)

DRAFT 2/29/2024

								Projected
	PIT Project ID	ConID	Scenario	Improvement	Facility	From	To	Completion Date
43	T6672	18600	MWAYROW	Construct	Crystal City/Potomac Yard Transitway-realign with dedicated right-of-way	East Glebe Road	Evans Lane	2030
44	CE3013	489	POTYDS	Construct	Metro Station	Potomac Yard		2022 2023 completed
45	CE2188	493		Construct	Park-and-Ride Garage	Springfield CBD	vic. I-95 & Old Keene Mill Road	2023 completed
46	CE2875	499		Construct	Park and Ride Lot	Arcola Center 300 spaces		2024
47	CE1981	503	SILVER 2	Construct	Dulles Corridor Metrorail	Wiehle-Reston East Station	Ashburn Station	2022 completed
48	CE3802			Study	Orange Line Metrorail Extension	Vienna Metrorail Station	Prince William County	not coded
49	CE3803			Study	Yellow Line Metrorail Extension	Huntington Metro	Hybla Valley/Gum Springs Community Business Center	not coded
50	CE3839			Study	Route 7 BRT	West Falls Church	Spring Hill via International Drive	not coded
51	CE3700	1019	SILVER 2	Construct	Park-and-Ride Garage	Innovation Station	2000+ parking spaces	2020 completed
52	CE2831	629	POTSHRS	Construct	VRE - Potomac Shores Commuter Rail Station	Potomac Shores	Prince William County	2022 2024
53	CE2930	505	VANDBRT	Construct	West End Transitway (City Funded)	Van Dorn Street Metro	Pentagon	2026 & 2035-2028
54	CE2930	1034	VANDBRT2	Construct	West End Transitway Phase II (Southern Segment)	Van Dorn Street Metro	Landmark Mall	2026
55	CE3071	507 32580	NRS	Construct	Landmark Transit Center	Duke Street and Van Dorn Street		2023 2027

NOTE: Shaded areas represent changes from the 2022 Update to Visualize 2045. Blue = removed. Yellow = added or changed.

VISUALIZE 2050 AIR QUALITY CONFORMITY NETWORK INPUTS (transit)

DRAFT 2/29/2024

								Projected
	PIT Project ID	ConID	Scenario	Improvement	Facility	From	To	Completion Date
56	CE2933	508	ALEXBUS	Implement	DASH Service Expansion	citywide		2030
57		821	BELTHOT	Implement	Beltway HOT lanes transit service			2030
58	CE2932	509	DUKEBUS	Construct	Duke Street Transitway	King Street Metro	Fairfax County Line	2027-2028
59	CE2695	672		Construct	Leesburg Park and Ride Lot (new location)	Crosstrails Blvd (approx)-	300 Spaces-	2018
60		674		Construct	One Loudoun Park and Ride Lot	VA 7 & Loudoun County Parkway	200 Spaces	2019 completed
61	CE3359	675		Construct	Western Loudoun Park and Ride Lot		250 Spaces	2024
62	CE3484	797	I66HOTI	Implement	I-66 Multimodal Corridor Improvements	Inside the beltway		through 2050
63	CE3448	799	I66HOTO	Implement	I-66 Corridor Enhanced Bus Service (details shown with project description sheet)	Outside the beltway		2022 completed
64	CE3448	800	I66HOTO	Implement	I-66 Corridor Enhanced Bus Service	Outside the beltway		through 2050
65	CE3448	801		Construct	I-66 Corridor Park and Ride lot	Haymarket		2021 completed
66	CE3448	802		Construct	I-66 Corridor Park and Ride lot	University Blvd. in Gainesville		2021 completed
67	CE3448	803		Construct	I-66 Corridor Park and Ride lot	Balls Ford Road in Manassas		2021 completed

NOTE: Shaded areas represent changes from the 2022 Update to Visualize 2045. Blue = removed. Yellow = added or changed.

VISUALIZE 2050 AIR QUALITY CONFORMITY NETWORK INPUTS (highway)

DRAFT 2/29/2024

	PIT Project ID	Con ID	Project ID	Agency ID	Improvement	Facility	From	To	Fr	To	Lanes From	Lanes To	Completion Date
DDOT													
68	CE2860	605	DI9		Reconstruct	I 295 Interchange at Malcolm X Blvd.	Add above grade ramp connection from NB I-295 off ramp to new St. Elizabeth's Access Road						2022 completed
69	T13597	33037			Reduce Capacity	Alabama Ave SE (eastbound)	5th Street SE	MLK Elementary School			2	1	2030
71	T13597	33038			Reduce Capacity	Alabama Ave SE (eastbound)	Jasper St. SE	James M. McGee Sr. St. SE			2	1	2030
71	T13597	33039			Reduce Capacity	Alabama Ave SE (eastbound)	Gainesville St. SE	Aigner Pl. SE			2	1	2030
72	T13597	33040			Reduce Capacity	Alabama Ave SE (eastbound)	25th Street SE	Naylor Rd. SE			2	1	2030
73	T13597	33041			Reduce Capacity	Alabama Ave SE (westbound)	Marion Barry Ave SE	Branch Ave. SE			2	1	2030
74	T13597	33042			Reduce Capacity	Alabama Ave SE (westbound)	Randle Pl. SE	7th Street SE			2	1	2030
75	T13597	33043			Reduce Capacity	Alabama Ave SE (westbound)	Congress St. SE	15th Street SE			2	1	2030
76	T13597	33044			Reduce Capacity	Alabama Ave SE (westbound)	24th Street SE	Irving St. SE			2	1	2030
77	T13597	33045			Reduce Capacity	Alabama Ave SE (westbound)	Naylor Rd. SE	31st Street SE			2	1	2030
78	T13597	33046			Widen	Alabama Ave SE (westbound)	Irving St. SE	Aigner Pl. SE			1	2	2030
79	T13597	33047			Reduce Capacity	Alabama Ave SE (westbound)	31st Place SE	Branch Ave. SE			2	1	2030
80	T13597	33048			Reduce Capacity	Alabama Ave SE (westbound)	34th Street SE	Suitland Rd. SE			2	1	2030
81	T13597	33049			Reduce Capacity	Alabama Ave SE (westbound)	38th Street SE	Pennsylvania Ave SE			2	1	2030
82	T3232	31473			Reduce Capacity - bike lanes	Arizona Ave NW (north/eastbound)	Carolina Place NW	Loughboro Rd NW			3	2	2024
83	T13596	32873			Reduce Capacity	Bladensburg Rd. NE	Eastern Ave.	Benning Road			6	4	2028

NOTE: Shaded areas represent changes from the 2022 Update to Visualize 2045. Blue = removed. Yellow = added or changed.

VISUALIZE 2050 AIR QUALITY CONFORMITY NETWORK INPUTS (highway)

DRAFT 2/29/2024

	PIT Project ID	Con ID	Project ID	Agency ID	Improvement	Facility	From	To	Fr	To	Lanes From	Lanes To	Completion Date
84	T3232	31566			Reduce Capacity - bike lanes	Branch Ave SE	Randle Circle SE	Alabama Ave SE			4	2	2025
85	T13599	34039			Reduce Capacity	Constitution Ave.	Louisiana Ave NW	Pennsylvania Ave NW			6	5	2026
86	T3232	1008	DS28		Reduce Capacity - bike lanes	Dalecarlia Pkwy NW	Loughboro Road	Westmoreland Circle			4	2	2040 2030
87	T6315	567	DP16		Reduce Capacity	East Capitol Street	40th Street	Southern Ave			6	4	2024 2030
88	T13592	32401			Reduce Capacity	Eastern Ave NE	Whittier St NW	New Hampshire Ave NE			3	2	2028
89	T13590	32016			Reduce Capacity Bus Lanes	Florida Avenue NW	9th Street NW	1st Street NE			4	2	2025
90	6195	710			Reduce Capacity	Florida Avenue NE	2nd Street	3rd Street			6	5	2023 completed
91	6195	717	DS13		Reduce Capacity	Florida Avenue NE	3rd Street	West Virginia Avenue			6	4	2023 completed
92	T13591	32180			Reduce Capacity Bus Lanes	Georgia Avenue NW	Eastern Ave.	Barry Place NW			4	2	2026
93	T3232	860	DS23		Reduce Capacity - bike lanes	Harewood Road NW	Rock Creek Church Road NW	North Capitol Street			2	1	2022 2024
94	T3232	31668			Reduce Capacity - bike lanes	Kansas Ave NW	Peabody St NW	Chillum Place NW			4	2	2024
95	T3232	31704			Reduce Capacity - bike lanes	Lincoln Rd NE	V St NE	4th St NE			3	2	2025
96	T3232	835	DP22		Reduce Capacity - bike lanes	Louisiana Avenue NW	Columbus Circle NE/ Mass Ave NE North Capitol St.	Constitution Avenue NW			4 5	3 4	2040 2026
97	T13587	31053			Reduce Capacity Bus Lanes	MLK Jr. Ave SE	W Street	Marion Barry Ave			2	1	2024

NOTE: Shaded areas represent changes from the 2022 Update to Visualize 2045. Blue = removed. Yellow = added or changed.

VISUALIZE 2050 AIR QUALITY CONFORMITY NETWORK INPUTS (highway)

DRAFT 2/29/2024

	PIT Project ID	Con ID	Project ID	Agency ID	Improvement	Facility	From	To	Fr	To	Lanes From	Lanes To	Completion Date
98	T13593	32442			Reconstruct	MLK Jr. Ave SE	South Capitol St. SE	Upsal St. SE			4	2	2027
99	CE3075 T6014	585	DS6		Reduce Capacity	Maryland Ave. NE	6th St. NE	15 St. NE			4	2	2021 completed
100	T13596	36004			Reduce Capacity	Maryland Ave. NE	Bladensburg Rd. NE	Neal St. NE			4	1	2028
101	T13599	34486			Reduce Capacity	Massachusettes Ave NE	1st Street NE	6th Street NE			4	3	2024
102	T13582	32595			Reduce Capacity Bus Lanes	Minnesota Ave SE bus lanes (southbound) (Phase B)	Nelson Pl SE	Burns St SE			2	1	2023 completed
103	T13581	32593			Reduce Capacity Bus Lanes	Minnesota Ave SE bus lanes (Phase A)	Nelson Pl SE	East Capitol St. SE			2	1	2023 completed
104	T13581	32668			Reduce Capacity Bus Lanes	Minnesota Ave SE bus lanes (Phase A)	L'Enfant Square SE	A St. SE			2	1	2023 completed
105	T3232	31503			Reduce Capacity - bike lanes	Missouri Avenue NW (Eastbound)	17th St NW	16th St NW			2	1	2030
106	T3232	1006	DS30		Reduce Capacity - bike lanes	Mount Olivet Rd NE	Brentwood Parkway	West Virginia Ave 17th Street NE			4	3	2022 2024
107	T3232	1010	DP40		Reduce Capacity - bike lanes	Nebraska Ave NW	New Mexico Ave	Loughboro Road			4	3	2022 2030
108	CE3399	608			Reconstruct	New Jersey Avenue NW 1-way to 2-way	H Street NW	N Street NW					2021 completed
109	CE3081	842	DS26		Reduce Capacity - Streetcar	New Jersey Avenue NW	H St NW	K Street NW			3 lanes 1-way	1-lane each 2-way	2040
110	T3232	707 31741			Reduce Capacity	New Jersey Avenue NW	H Street	Louisiana Ave			4	2 3	2021 2024
111	T3212 T3232	7836 10675	DS42		Reduce Capacity -	Park Place/5th Street NW	Grant Circle	Kenyon St NW	3	3	2	1	2022 completed
112	CE3447 T6595	712	DS15		Reduce Capacity	Pennsylvania Avenue NW	17th Street	18th Street			6	4	2025
113	CE3447 T6595	713	DS14		Reduce Capacity	Pennsylvania Avenue NW	18th Street	20th Street			5	4	2025

NOTE: Shaded areas represent changes from the 2022 Update to Visualize 2045. Blue = removed. Yellow = added or changed.

VISUALIZE 2050 AIR QUALITY CONFORMITY NETWORK INPUTS (highway)

DRAFT 2/29/2024

	PIT Project ID	Con ID	Project ID	Agency ID	Improvement	Facility	From	To	Fr	To	Lanes From	Lanes To	Completion Date
114	CE3447-T6595	714	DS18-DS18A		Reduce Capacity	Pennsylvania Avenue NW	20th Street	26th Street 22nd Street			6	4	2040 2025
115	CE3447	714	DS18		Reduce Capacity	Pennsylvania Avenue NW	20th Street 22nd Street	26th Street			6	4	2040
116	CE3447	715	DS16		Reduce Capacity	Pennsylvania Avenue NW	26th Street	28th Street			5	4	2040
117	CE3447	716	DS17		Reduce Capacity	Pennsylvania Avenue NW	28th Street	29th Street			4	2	2040
118	CE3654-T3232	1009-947	DP36A-DP35		Reduce Capacity - bike lanes	Pennsylvania Ave SE	2nd Street SE	17th Street 14th Street SE	2	2	6	4	2023 completed
119	CE3654	948	DP36		Reduce Capacity - bike lanes	Pennsylvania Ave SE	14th Street SE	Barney Circle			8	6	2024 2023 completed
120	T3232	31949			Reduce Capacity - bike lanes	Potomac Ave SE	18th St SE	19th St SE			2	1	2024
121	T3423	541	DP9A	AW011, AW024 A, AW001 A, AW025 A, CKTB6	Widen	South Capitol Street Corridor: Frederick Douglass Bridge	Independence Avenue (East)	Martin Luther King, Jr. Blvd. (west)	2	2	5	6	2025 2021 completed
122	T5803	542	DP9C		Construct	South Capitol Street Intersection	at Potomac Avenue						2022 completed
123	T6114	609			Reduce Capacity	South Capitol Street	Firth Sterling Ave.	Southern Ave Maryland state line			5	4 5	2022 completed
124	T13586	31051			Reduce Capacity	Southern Ave SE (northbound)	South Capitol St. SE	Barnaby Road SE			2	1	2026
125	T13599	34038			Reduce Capacity	Southern Ave SE	Pennsylvania Ave SE	Benning Road SE			4	2	2024

NOTE: Shaded areas represent changes from the 2022 Update to Visualize 2045. Blue = removed. Yellow = added or changed.

VISUALIZE 2050 AIR QUALITY CONFORMITY NETWORK INPUTS (highway)

DRAFT 2/29/2024

	PIT Project ID	Con ID	Project ID	Agency ID	Improvement	Facility	From	To	Fr	To	Lanes From	Lanes To	Completion Date
126	T6038	543	DP9D		Construct	Suitland Parkway interchange	at Martin Luther King, Jr. Boulevard to complete movements						2021 completed
127	T13599	34053			Reduce Capacity	Taylor St. NE	North Capitol St NW	7th Street NE			3	2	2024
128	T3232	31780			Reduce Capacity - bike lanes	Van Buren St NW	Blair Rd NW	3rd St NW			2	1	2025
129	T3212 T3232	7825 11119	DS43		Reduce Capacity -	Virginia Ave NW	Rock Creek and Potomac Pkwy NW	18th St NW	3	3	6	5	2021 completed
130	T3212 T3232	7837 10614	DS44		Reduce Capacity - bike lanes	Warder Street/7th Street NW	Kenyon St NW	New Hampshire Ave NW	4	4	2	1	2022 completed
131	T13599	34050			Reduce Capacity	Western Ave NW	Park Ave	River Road NW			3	2	2024
132	T13599	34051			Reduce Capacity	Western Ave NW	River Road NW	45th Street NW			4	3	2024
133	T13599	34052			Reduce Capacity	Western Ave NW	45th Street NW	Jenifer Street NW			5	4	2024
134	3232 T13578	709 29860	DS19		Reduce Capacity	Wheeler Road SE	Alabama Avenue	Southern Avenue			4	2	2021 2027
135	CE3077	558	DP42B	ED0C2A	Reduce Capacity	C Street (westbound only)	Oklahoma Avenue 16th Street NE	14th Street NE			5 2	3 1	2022 completed
136	CE3077	558 33201	DP42A	ED0C2A	Reduce Capacity	N. Carolina Avenue	14th Street NE	Oklahoma Avenue 16th Street NE			5 4	3 2	2022 completed
137	CE3077	558 33202	DP42	ED0C2A	Reduce Capacity	C Street/N. Carolina Avenue	Oklahoma Avenue 22nd Street NE	14th Street NE 16th Street NE			5	3	2022 completed
138	CE3081	841	DP25		Reduce Capacity - Streetcar	H Street NE/NW	3rd Street NE	New Jersey Ave NW			6	4	2040
139	3212	11116	DP43A		Reduce Capacity Bus Lanes	H Street NW	Pennsylvania Ave	Connecticut Ave	2	2	4	3	2021 completed

NOTE: Shaded areas represent changes from the 2022 Update to Visualize 2045. Blue = removed. Yellow = added or changed.

VISUALIZE 2050 AIR QUALITY CONFORMITY NETWORK INPUTS (highway)

DRAFT 2/29/2024

	PIT Project ID	Con ID	Project ID	Agency ID	Improvement	Facility	From	To	Fr	To	Lanes From	Lanes To	Completion Date
140	3212	11117	DP43B		Reduce Capacity Bus Lanes	H Street NW	Connecticut Ave	Vermont Ave	2	2	4	2	2021 completed
141	3212 T3232	11118	DP43C		Reduce Capacity Bus Lanes	H Street NW	Vermont Ave	15th Street	2	2	4	3	2021 completed
142	3212 T3232	11119	DP43D		Reduce Capacity Bus Lanes	H Street NW	15th Street	14th Street	2	2	3	2	2021 completed
143	T13580	32584	DP43E		Reduce Capacity Bus Lanes	H Street NW	13th Street	9th Street	2	2	6	3	2022 completed
144	T13580	32585	DP43F		Reduce Capacity Bus Lanes	H Street NW	9th Street	6th Street	2	2	6	4	2022 completed
145	T13580	32586	DP43G		Reduce Capacity Bus Lanes	H Street NW	6th Street	5th Street	2	2	6	3	2022 completed
146	T13580	32587	DP43H		Reduce Capacity Bus Lanes	H Street NW	New Jersey Avenue NW	North Capitol St	2	2	6	4	2022 completed
147	T13584	30503			Reduce Capacity	H Street NE	3rd Street NE	Benning Ave NE	2	2	4	2	2024
148	T3232	31823			Reduce Capacity - bike lanes	I St NW	15th St NW	Vermont Ave NW			3	2	2024
149	3212 T3232	11122	DP44C		Reduce Capacity Bus Lanes	I Street NW	17th Street	18th Street	2	2	3	2	2021 completed
150	3212 T3232	11123	DP44D		Reduce Capacity Bus Lanes	I Street NW	19th Street	20th Street	2	2	3	2	2021 completed
151	T3232	31633			Reduce Capacity - bike lanes	K St NE	1st St NE	2nd St NE			4	2	2024
152	CE3652	946	DP34		Reduce Capacity - bike lanes	K Street NW	7th St NW	1st Street NE			4	2	2021 completed
153	CE3081	844	DP26A		Reduce Capacity - Streetcar	K Street NW	New Jersey Avenue NW	7th Street NW			3	2	2040

NOTE: Shaded areas represent changes from the 2022 Update to Visualize 2045. Blue = removed. Yellow = added or changed.

VISUALIZE 2050 AIR QUALITY CONFORMITY NETWORK INPUTS (highway)

DRAFT 2/29/2024

	PIT Project ID	Con ID	Project ID	Agency ID	Improvement	Facility	From	To	Fr	To	Lanes From	Lanes To	Completion Date
154	CE3081	845	DP27		Reduce Capacity - Transitway	K Street NW	9th Street NW	12th St NW			4	2	2025
155	CE3081	846	DP28		Reduce Capacity - Transitway	K Street NW	12th St NW	21st St NW			6	4	2025
156	CE3081	847	DP29		Reduce Capacity - Streetcar	K Street NW	21st Street NW	25th Street NW			4	2	2040
157	CE3081	848	DP30		Reduce Capacity - Streetcar	K Street NW	25th Street NW	29th Street NW			6/4	4	2040
158	CE3081	849	DP31		Reduce Capacity - Streetcar	K Street NW	29th Street NW	Wisconsin Avenue NW			4	2	2040
159	T3232	31599			Reduce Capacity - bike lanes	M St NE	1st St NE	1st St NW			2	1	2026
160	T3232	4005-31904	DS31		Reduce Capacity - bike lanes	M Street SE	Half St 1st Street SE	11th Street SE			6	5 3	2022-2023 completed
161	T13585	30507			Reduce Capacity Bus Lanes	U Street NW	18th Street	9th Street			4	2	2025
162	T3232	31781			Reduce Capacity - bike lanes	4th St NW	Butternut St NW	Van Buren St NW			2	1	2030
163	T3232	1013 831			Reduce Capacity - bike lanes	9th St NW	Massachusetts Ave	Florida Ave			4	3 2	2030-2023 completed
164	T3232	1012	DP39		Reduce Capacity - bike lanes	9th St NW	Constitution Ave	Massachusetts Ave			6/4	4/2	2030 2023 completed
165	T3232	829	DS21		Reduce Capacity - bike lanes	6th Street NW	Constitution Avenue	Massachusetts Avenue			6 peak - 4 offpeak	4 peak - 2 offpeak	2030
166	T3232	830	DS22		Reduce Capacity - bike lanes	6th Street NW	Massachusetts Avenue	Florida Ave NW			4	3	2030

NOTE: Shaded areas represent changes from the 2022 Update to Visualize 2045. Blue = removed. Yellow = added or changed.

VISUALIZE 2050 AIR QUALITY CONFORMITY NETWORK INPUTS (highway)

DRAFT 2/29/2024

	PIT Project ID	Con ID	Project ID	Agency ID	Improvement	Facility	From	To	Fr	To	Lanes From	Lanes To	Completion Date
167	T3232	702	DS9		Reduce Capacity	7th Street NW	New York Avenue	N Street			4	2	2021 2016 completed
168	T13599	34040			Reduce Capacity	7th Street NW	Pennsylvania Ave NW	Constitution Avenue NW			6	3	2025
169	T13599	34041			Reduce Capacity	7th Street NW	Constitution Avenue NW	C Street/ Maryland Ave SW			7	4	2025
170	T13599	34042			Reduce Capacity	7th Street NW	C Street/ Maryland Ave SW	G Street SW			6	3	2025
171	T13599	34043			Reduce Capacity	7th Street NW	G Street SW	Maine Ave SW			6	3	2025
172	T13588	31056			Reduce Capacity Bus Lanes	8th Street SE	I Street	L Street			3	2	2024
173	T13588	31057			Reduce Capacity Bus Lanes	8th Street SE	D Street	L Street				1	2024
174	T13588	31058			Reduce Capacity Bus Lanes	8th Street SE	E Street	Pennsylvania Ave				1	2024
175	T13583	30480			Reduce Capacity Bus Lanes	11th St NW	E Street NW	L Street NW			4	2	2024
176	T13583	32645			Reduce Capacity Bus Lanes	11th St NW	Pennsylvania Ave NW	E Street NW			4	2	2024
177	T3212 T3232	7820- 11123	DS35		Reduce Capacity - bike lanes	15th Street Cycletrack	Pennsylvania Ave NW	East Basin Dr. SW	3	3	4	3	2021 2022 completed
178	T3232	31822			Reduce Capacity - bike lanes	15th St NW	H St NW	I St NW			4	4	2024
179	T6638	839	DP23		Reduce Capacity - Bus Priority	16th Street NW	Arkansas Avenue NW	Columbia Road NW			6	4	2022 completed
180	T6638	840	DP24		Reduce Capacity - Bus Priority	16th Street NW	Columbia Road NW	W Street NW			5	4	2022 completed
181	CE3651 T3212	944	DP32		Reduce Capacity - bike lanes	17th Street NW	New Hampshire Avenue	K St. NW Massachusetts Ave.	3	3	2	1	2021 completed
182	T3232	31534			Reduce Capacity - bike lanes	17th St NE/SE	Benning Rd NW	Potomac Ave SE			2	1	2023 completed
183	T3232	31996			Reduce Capacity - bike lanes	19th St SE	Potomac Ave SE	East Capitol St NE			2	1	2024
184	T3212 T3232	7821- 11122	DS37		Reduce Capacity - bike lanes	20th St. NW Bike Lanes	G St.	Massachusetts Ave.	4	4	4	2	2022 completed

NOTE: Shaded areas represent changes from the 2022 Update to Visualize 2045. Blue = removed. Yellow = added or changed.

VISUALIZE 2050 AIR QUALITY CONFORMITY NETWORK INPUTS (highway)

DRAFT 2/29/2024

	PIT Project ID	Con ID	Project ID	Agency ID	Improvement	Facility	From	To	Fr	To	Lanes From	Lanes To	Completion Date
185	T3212 T3232	7827 11118	DS38		Reduce Capacity - bike lanes	21st St. NW	Constitution Ave. C Street NW	Massachusetts Ave. G Street NW			3	2	2021 completed
MDOT													
Interstate													
186	T3044	126	MI2Q	MO839 1	Construct	I 270 Interchange	at Watkins Mill Road		1	1	8	8	2020 completed
187	T6432 T11582 CE1186	125	MI2U1	AW0731	Construct/Widen	I 270 Toll Lanes	I 270Y on the entire western spur, and on the eastern spur from MD187 north to the main I-270		1	1	4 + 2 HOV	4 + 4 HOT	2025 2030
188	T6432 T11582 CE1186	125	MI2U1	AW0731	Construct/Widen-Study	I 270 Toll Lanes	I 270Y on the entire western spur, and on the eastern spur from MD187 north to the main I-270		1	1	4 + 2 HOV	4 + 4 HOT	2025 not coded
189	T6432 T11582 CE1186	892	MI2U2	AW0731	Construct	I 270 Toll Lanes	I 270Y	I 370	1	1	10 + 2 HOV	10 + 4 HOT	2025 2040
190	T6432 CE1186 T11583	893	MI2U3	AW0731	Construct/Widen-Study	I 270 Northbound Toll Lanes	I 370	Middlebrook Road	1	1	3 + 1 HOV NB	3 + 2 HOT NB	2030 not coded
191	T6432 CE1186 T11583	893	MI2U4	AW0731	Construct/Widen-Study	I 270 Southbound Toll Lanes	Middlebrook Road	I-370	1	1	4 SB	4 + 2 HOT SB	2030 not coded
192	T6432 CE1186 T11583	894	MI2U5	AW0731	Construct/Widen-Study	I 270 Northbound Toll Lanes	Middlebrook Road	MD 121	1	1	2 + 1 HOV NB	2 + 2 HOT NB	2030 not coded
193	T6432 CE1186 T11583	894	MI2U6	AW0731	Construct/Widen-Study	I 270 Southbound Toll Lanes	MD 121	Middlebrook Road	1	1	3 SB	3 + 2 HOT SB	2030 not coded
194	T6432 CE1186 T11583	895	MI2U7	AW0731	Construct/Widen-Study	I 270 Toll Lanes	MD 121	I 70 / US 40	1	1	4	4 + 4 HOT	2030 not coded
195	6444	953	MI2TSB7		Construct	I270 southbound auxiliary lane (innovative congestion management)	MD 28 on-ramp	MD 189 off-ramp	1	1			2024 2024
196	6444	957	MI2TNB2		Construct	I270 northbound auxiliary lane (innovative congestion management)	MD 189 on-ramp	MD 28 off-ramp	1	1			2024 2024

NOTE: Shaded areas represent changes from the 2022 Update to Visualize 2045. Blue = removed. Yellow = added or changed.

VISUALIZE 2050 AIR QUALITY CONFORMITY NETWORK INPUTS (highway)

DRAFT 2/29/2024

	PIT Project ID	Con ID	Project ID	Agency ID	Improvement	Facility	From	To	Fr	To	Lanes From	Lanes To	Completion Date
197	6444	958	MI2TNB2		Construct	I270 northbound auxiliary lane (innovative congestion management)	South of MD 28 slip ramp to express lanes	North of MD 28 slip ramp to local lanes	1	1			2024 2024
198			MI2TNB3		Construct	I270 northbound (innovative congestion management)	Shady Grove Road	I-370 off-ramp	1	1			2019 completed
199			MI2TNB4		Construct	I270 northbound (innovative congestion management)	MD 124 on-ramp	Watkins Mill Road off-ramp	1	1			2019 completed
200			MI2TNB4		Construct	I270 northbound auxiliary lane (innovative congestion management)	Watkins Mill Road on-ramp	Middlebrook Road westbound off-ramp	1	1			2019 completed
201	CE1187	210	MI4		Widen	I 70	Mt. Phillip Road	West of I 270	1	1	4	6	2035
202	CE2250	151	MI4a	FR5801	Reconstruct	I 70	at MD 144FA, Meadow Road, and Old National Pike		1	1	6	6	2022 completed
203	CE1479-T2894	108	MI1P MI1PR	PG3331	Construct	I-95/I-495	at Greenbelt Metro Station		1	1	8	8	2030
204	T6432-T11582-CE3281	696	MI1Q	AW0731	Construct/Widen	I 495 Toll Lanes	Virginia State line/Potomac River (including American Legion Bridge)	I 270Y - western spur	1	1	8/10	8/10 + 4 HOT	2025 2030
205	T6432-T11582-CE3281	856	MI1R	AW0731	Construct/Widen	I 495 Toll Lanes	I 270Y - western spur	MD 355 MD 187	1	1	6	6 + 4 HOT	2025 2030
206	T6432 CE3281	905	MI1S	AW0731	Study	I 495 Toll Lanes	MD 355 MD 187	I 95	1	1	8	8 + 4 HOT	not coded
207	T6432 CE3281	906	MI1T	AW0731	Study	I 95 / I 495 Toll Lanes	I 95	Baltimore Washington Parkway	1	1	8	8 + 4 HOT	not coded
208	T6432 CE1182	907	MI1U	AW0731	Study	I 95 / I 495 Toll Lanes	Baltimore Washington Parkway	Glenarden Parkway	1	1	8	8 + 4 HOT	not coded
209	T6432 CE1182	908	MI1V	AW0731	Study	I 95 / I 495 Toll Lanes	Glenarden Parkway	MD 202F	1	1	10	10 + 4 HOT	not coded
210	T6432 CE1182	909	MI1W	AW0731	Study	I 95 / I 495 Toll Lanes	MD 202F	Potomac River (not including Wilson Bridge)	1	1	8	8 + 4 HOT	not coded
Primary													
211	T3108	139	MP10A	PG2531	Reconstruct	US 1	College Avenue	MD 193	2	2	4	4	2023 2024
212	CE1200	370	MP9	CA4131	Widen	MD 2/4 Solomons Island Road	North of Stoakley Road/Hospital Drive	South of MD 765A (south junction) just south of Parkers Creek	2	2	4	6	2045
213	CE1200	913	NRS	CA4131	Construct	MD 2 / MD 4 Interchange	at Stoakley Road/Hospital Drive and at MD 765A (south junction)		2	5	4	6	2045

NOTE: Shaded areas represent changes from the 2022 Update to Visualize 2045. Blue = removed. Yellow = added or changed.

VISUALIZE 2050 AIR QUALITY CONFORMITY NETWORK INPUTS (highway)

DRAFT 2/29/2024

	PIT Project ID	Con ID	Project ID	Agency ID	Improvement	Facility	From	To	Fr	To	Lanes From	Lanes To	Completion Date	
214	T6394	127	MP2C	AT1981	Widen	MD 3 Robert Crain Highway	I-95/US 50/US 301	Anne Arundel County Line	2	2	4	6	2035	
215	CE1194	212	MP3A	PG9171	Widen	MD 4 Pennsylvania Avenue	I-95/I-495	MD 223	5	5	4	6	2040	
216	T3469 CE1196	205	MP4F	PG3916	Widen/Upgrade	MD 5 Branch Avenue	US 301 at T.B.	North of I95 /I 495	2	5	4	6	2035	
217	CE3567 T6431	914 34276	MP15B	FR1881	Construct/Widen	US 15	MD 26	North of Biggs Ford Road with grade separated interchange at Biggs Ford Road	5	5	4	6	2040	
218	CE3566 T6431	915 34269	MP15A	FR1881	Construct/Widen	US 15	US 340 / South Jefferson Street I-270	MD 26	5	5	4	6	2030	
219	CE1197	551			Construct	US 29 Columbia Pike	at Tech Road / Industrial Road		5	5	6	6	2030-2035	
220	CE1197	552 919, 918	MP19A MP19B MP19C		Construct	US 29 Columbia Pike Interchange	at Stewart Lane, Greencastle Road, & Blackburn Road		5	5	6	6	2045	
221	CE1210	858	FP2B		Widen	MD 85	South of English Muffin Way	Crestwood Drive/Shockley Drive	2	2	2/4	4	2035	
222	CE1210	859	FP2C	FR3881	Construct/Widen	MD 85 Buckeystown Pike	Spectrum Drive	North of Grove Road	2	2	4	6	2035	
223	T6483	391	FP2A	FR3881	Construct/Widen	MD 85 Buckeystown Pike	Crestwood Drive/Shockley Drive	Spectrum Drive	2	2	4	6	2022-2023 completed	
224	CE1190	387	MP14	PG6191	Reconstruct	MD 202	at Brightseat Road		2	2	6	6	2045	
225	T4879 T6524 CE1199	124	MP6D	PG2211	Upgrade	MD 210 Indian Head Highway	I-95/495	MD 228	2	5	6	6	2040	
226	T5527	384	MP18		Construct	US 301 Gov. Nice Bridge	Charles County, MD	King George County, VA	2	2	2	4	2023-2025	
227	CE1004 CE1619	940	MP8E		Widen Reconstruct	US 301	Harry Nice Bridge Mt. Oak Road	I-595 / US 50	2	5	4/6	6	2045-2035	
Secondary														
228	T3476 CE1462	206	MS2F	MO886 1	Widen	MD 28 Norbeck Road	MD 97	MD 182	2	2	2	2-4	4	2045
229	T3106	137	MP12C	MO746 1	Construct	MD 97 Brookeville Bypass	Gold Mine Road	North of Brookville	0	2	0	2	2021-2025	
230	CE2618 T5420	931 33680 35167	NRS	MO2241	Reconstruct	MD 97	MD 390	MD 192 / Forest Glen Road	2	2	6/7	6/7	8	2030

NOTE: Shaded areas represent changes from the 2022 Update to Visualize 2045. Blue = removed. Yellow = added or changed.

VISUALIZE 2050 AIR QUALITY CONFORMITY NETWORK INPUTS (highway)

DRAFT 2/29/2024

	PIT Project ID	Con ID	Project ID	Agency ID	Improvement	Facility	From	To	Fr	To	Lanes From	Lanes To	Completion Date
231	CE1211	392	NRS	MO8521	Upgrade	MD 97 Georgia Avenue Interchange	at MD 28 Norbeck Road		2	2	6	6	2035
232	CE1203	115	MS32		Reconstruct	MD 117 Clopper Road	I270	Metropolitan Grove Road	3	3	4	4	2030
233	CE1203	921	NRS-MS32A		Reconstruct	MD 117 Clopper Road	Metropolitan Grove Road	West of Game Preserve Road	3	3	2	3	2035
234	3057-CE1206	118	MS6B	MO632	Widen	MD 124 Woodfield Road	Midcounty Highway	South of Airpark Drive	3	3	2	6	2035
235	3057-CE1206	1	MS6D	MO632	Widen	MD 124 Woodfield Road	North of Fieldcrest Road	Warfield Road	3	3	2	6	2035
236					reduce capacity bus lanes	MD 193 (University Blvd)	Amherst Ave.	Dennis Ave.			6	4	2024
237	CE2253 T13579 T4887	356	MS35	PG6911	Widen	MD 197 Collington Road	MD 450	Kenhill Drive	2	2	2	4	2030 2050
238	CE2261	924	MS36A	FR5491	Construct/Widen	MD 180	Greenfield Drive	I-70 (west junction)	4	4	2	4	2035
239	CE1204	359	MS10B	PG9491	Widen	MD 201 Edmonston Rd. / Old Baltimore Pike	Cherrywood Lane	Ammendale Way	3	3	2/3	4	2045
240	CE1204	965	MS10E	PG9491	Construct/Widen	MD 201 Extended (Cedarhurst Dr.)	Muirkirk Road	US 1	3	3	2	4	2045
241	CE1207	175	MS18D	PG6541	Widen	MD 450 Annapolis Road	Stonybrook Drive	west of MD 3	2	2	2	4	2030 2035
242	T3542	516	same as MC15B	MO3441	Construct	Montrose Parkway	Randolph Road	East of Parklawn Drive	0	2	0	4	2020 2045
Frederick County													
Secondary													
243		648	MS36C	FR5491	Widen/Upgrade	MD 180 Ballenger Creek Pike	Ballenger Center Drive	Corporate Drive	3	2	2	4	2020 completed
244	CE3594	880	FS3		Expansion	Christopher's Crossing	Walter Martz Road	Thomas Johnson Drive	3	3	0 to 2	4	2020 2024
245	T5494	993	FS3A		Widen/Upgrade	Christopher's Crossing	Whittier Drive	Poole Jones Rd./Walter Martz Rd.	3	3	2	4	2024
246	CE1181	651	FS2a		Widen	Monocacy Boulevard	Schifferstadt Boulevard	Gas House Pike	3	3	2	4	2019 2020 completed
Montgomery County													
Secondary													

NOTE: Shaded areas represent changes from the 2022 Update to Visualize 2045. Blue = removed. Yellow = added or changed.

VISUALIZE 2050 AIR QUALITY CONFORMITY NETWORK INPUTS (highway)

DRAFT 2/29/2024

	PIT Project ID	Con ID	Project ID	Agency ID	Improvement	Facility	From	To	Fr	To	Lanes From	Lanes To	Completion Date
247	CE1577	199	MC43		Construct	Dorsey Mill Road Bridge over I-270	Century Blvd.	Milestone Center Dr.- Observation Dr.	0	3	0	4	2030-2040
248	T3049	112	MC7A		Widen	Goshen Road South	South of Girard Street	1000 feet north of Warfield Road	3	3	2	4	2030-2040
249	T7503	11221			Widen	Little Seneca Parkway	MD355	Observation Drive	3	3	2	4	2035
250		113	MC12F		Widen	MD 118 Germantown Road Extended	MD 355	M 83 at Watkins Mill Road	2	2	3	4	2020
251	CE1229	161	MC14G		Widen	Middlebrook Road Ext.	MD 355	M 83	2	2	3	4	2045
252	3703	214	MC15B		Construct	Montrose Parkway East	Eastern Limit of MD 355/Montrose Interchange	Veirs Mill Road/Parkland Road Intersection	0	2	0	4	2045
253	T7503	11220			Construct	Extend Observation Drive	Waters Discovery Lane	West Old Baltimore Road	0	3	0	4	2035
254	T7503	11222			Construct	Extend Observation Drive	Little Seneca Parkway	Existing Observation Drive near Stringtown Road	0	3	0	2	2045
255	CE1236	119	MC34		Widen	Snouffer School Road	MD 124 Woodfield Road	Centerway Road	3	3	2	4	2021 completed
Urban													
256	T5986	423		501116-5	Construct	MD 187 Old Georgetown Road	MD 187 Old Georgetown Road	Nicholson Lane/Tilden Lane			0	6	2030
Prince George's County													
Secondary													
257	6367	361	PGS3a		Widen	Addison Road	Walker Mill Road	MD 214 Central Avenue	3	3	2	4	2026
258	CE1270	386	PGS5		Construct	Allentown Road Relocated	MD 210 Indian Head Highway	Brinkley Road		3		4	2028
259	CE1320	365	PGS73	PGS73	Widen	Ardwick-Ardmore Road	MD 704	91st Ave.	4	4	2	4	2030
260	CE1272	388	PGS9a		Widen	Bowie Race Track Road	MD 450 Annapolis Road	Clearfield Road	4	4	2	4	2024
261	CE1277	140	PGS16a		Construct	Campus Way North	Lake Arbor Way	south of Lottsford Road	0	4	0	4	2023
262	CE1277	138	PGS16b		Construct	Campus Way North Extended	south of Lottsford Road	Evarts Drive	0	4	0	4	2020
263	CE1279	142	PGS18		Widen	Church Road	Woodmore Road	Central Ave. (MD 214)	4	4	2	4	2028
264	CE1280	143	PGS20a		Widen	Columbia Park Road	Cabin Branch Road	Columbia Terrace	4	4	2	4	2020
265	CE1288	162	PGS30a		Widen	Good Luck Road	MD 201 Kenilworth Avenue (east of)	Cipriano Road	4	4	2	4	2025

NOTE: Shaded areas represent changes from the 2022 Update to Visualize 2045. Blue = removed. Yellow = added or changed.

VISUALIZE 2050 AIR QUALITY CONFORMITY NETWORK INPUTS (highway)

DRAFT 2/29/2024

	PIT Project ID	Con ID	Project ID	Agency ID	Improvement	Facility	From	To	Fr	To	Lanes From	Lanes To	Completion Date
266	3132	163	PGS34B		Widen	Hill Road	Consideration Lane	MD 214 Central Avenue	4	4	2	4	2028
267	T5806	165	PGS38b		Widen	Livingston Road	Piscataway Creek	Farmington Road	4	4	2	4	2025
268	CE1291	417	PGS38a		Widen	Livingston Road	MD 210 Indian Head Highway at Eastover	Kerby Hill Rd.	4	3	2	4	2028
269		213	PGS40a		Widen	Lottsford Road	Archer Lane	MD 193 Enterprise Road	3	3	2	4	2021 completed
270			PGS40b		Reduce Capacity - bike lanes	Lottsford Road	MD 202 (Landover Rd.)	Largo Dr. West	3	3	6	4	2020
271	CE1295	360	PGP4a		Construct	MD 193 Greenbelt Road	Baltimore Washington Parkway (ramp to)		0	5	0	4	2025
272	CE1294	2	PGS42C		Widen	MD 223 Woodyard Road Relocated	Piscataway Creek/Floral Park Road	MD 4 /Livingston Road	3	3	2	4	2017
273	CE1295	169	PGS44b		Widen	Metzerott Road	Adelphi Road	MD 193 University Boulevard	4	4	2	4	2020 completed
274	CE1297	173	PGS47		Widen	Oak Grove and Leeland Roads	MD 193 Watkins Park Road	US 301 Robert Crain Highway	4	4	2	4	2028
275	CE1299	649	PGS50		Widen	Old Branch Avenue	MD 223 Piscataway Road (north of)	MD 337 Allentown Road	4	4	2	4	2028
276		369	PGS51a		Widen	Old Gunpowder Road	Powder Mill Road	Greencastle Road	3	3	2	4	2018
277	CE2623	153	PGS55b		Widen	Ritchie Marlboro Road	White House Road	Old Marlboro Pike	2	2	2	4	2028
278	CE1304	178	PGS58		Widen	Rosaryville Road	US 301	MD 223 Woodyard Road	3	3	2	4	2020
279	CE1309	181	PGS63		Widen	Sunnyside Avenue	US 1	MD 201 Kenilworth Avenue	4	4	2	4	2022
280	t3159	182	PGS64		Widen	Surrats Road	Beverly Ave.	Brandywine Rd	4	4	2	4	2025 Completed 2018
281	CE1314	187	PGS67a		Widen	Van Dusen Road	Contee Road	MD 198 Sandy Springs Road	3	3	2	4	2020
282		188	PGS68		Widen	Virginia Manor Road	Muirkirk Road	Old Gunpowder Road	4	4	2	4	2014 completed
283	CE1316	429	PGS69a		Widen	Walker Mill Road	Silver Hill Road	I-95	3	3	2	4	2028
284	CE2624	154	PGS91		Widen	Westphalia Road	MD 4 Pennsylvania Avenue	Ritchie Marlboro Road	2	2	2	4	2028
285		436	PGS40b		Construct	Woodmore Road	MD 193 Enterprise Road	Church Road	3	3	2	4	2025
Anne Arundel County													
286			AA14D		Widen	US 50	I-97	MD 2	1	1	6	8	2045

NOTE: Shaded areas represent changes from the 2022 Update to Visualize 2045. Blue = removed. Yellow = added or changed.

VISUALIZE 2050 AIR QUALITY CONFORMITY NETWORK INPUTS (highway)

DRAFT 2/29/2024

	PIT Project ID	Con ID	Project ID	Agency ID	Improvement	Facility	From	To	Fr	To	Lanes From	Lanes To	Completion Date
287					widen	I-97 HOV lanes	MD 32	US 50/301		2	4	6	
288			AA15a		Widen	I-295	I-195	MD 100	1	1	4	6	2035
289			AA3E		Widen	MD 2	US 50	I-695			4	6	2035
290			AA4e		Widen	MD 3	MD 32	MD 424	2	2	4	6	2025
291					Widen	MD 32 HOV?	I-97	Howard County Line		2	6	8	
292			AA6e		Widen	MD 100	Howard Co. Line	I-97		5/1	4	6	2035
293			AA8b		Widen	MD 175	MD 170	295 BW Parkway		2	4	6	2025
294			AA35		Widen	MD 177	MD 2	Lake Shore Dr.			2	4	2045
295			AA30		Widen	MD 198	MD 32	BW Parkway	2	2	2	4	2030
296					Widen	MD 214	MD 424	Shoreham Beach Dr.			2	4	2045
297			AA34a		Widen	MD 713	MD 175	MD 176		2	2	4	2040
Carroll County													
298			CA1B		Widen	MD 140	Sullivan Road	Market St.		1	6	8	2035
299			CA2a		Widen	MD 26	MD 32	Liberty Reservoir			4	6	2035
300			CA4A		widen	MD 32	MD 26	Howard County Line		2	2	5	2040
301			CA5		Widen	MD 97	MD 140	Bachmans Valley Rd.		2	2	4	2035
Howard County													
302			HW1b		Widen	I-70	US 29	MD 32	1	1	4	6	2035
303			HW19		Widen	I-95 Peak period shoulder use	MD 32	MD 100	1	1	4	4+1	2035
304			HW20		Widen	US 1	Howard/PG line	Howard/Balt. Co. line			4	6	2045
305			HW10b		Widen	US 29 NB	Middle Patuxent River	Seneca Dr.		5	4	6	2030
306			HW3c		Widen	MD 32	Cedar Lane	Anne Arundel County Line Brock Bridge Rd.		1	4/6	8	2045
307			HW3B		Widen	MD 32	MD 108	I-70		2	2	4	2021 completed
308			HW3D		Widen	MD 32	I-70	Howard/ Carroll County Line River Rd			2	4	2045
309			HW5F		Widen	MD 100	I-95	AA/Howard Line	1	1	4	6	2035
310			HW6c		Widen	MD 108	Trotter Rd.	Guilford Rd.	2	2	2	4	2035
311			HW7C		Widen	MD 175	Oceano Ave	Howard/AA Col Line			2	4	2045
312			HW8b		Widen	MD 216	High School Access Rd.	Maple Lawn Blvd.		3	2	4	2015 completed
313			HW14c		Widen	Snowden River Parkway	Oakland Mills Road	Broken Land Parkway		3	4	6	2023 completed
Calvert-St. Mary's MPO													
314	CE2246	644	MP9B	C-SMMPO	Construct Study	Thomas Johnson Bridge replacement	over the Patuxent River		2	2	2	4	2031 not coded

NOTE: Shaded areas represent changes from the 2022 Update to Visualize 2045. Blue = removed. Yellow = added or changed.

VISUALIZE 2050 AIR QUALITY CONFORMITY NETWORK INPUTS (highway)

DRAFT 2/29/2024

	PIT Project ID	Con ID	Project ID	Agency ID	Improvement	Facility	From	To	Fr	To	Lanes From	Lanes To	Completion Date
315			MP9C	C-SMMPO	Widen	MD 4 (in St. Mary's County)	Thomas Johnson Bridge	MD 235	2	2	2	4	2031 2032
316			NRS	C-SMMPO	Construct	MD 4/ MD 235 Interchange	in Lexington Park		2	2	--	--	2028 2032
317			MP9D	C-SMMPO	Widen	MD 4 (in Calvert County)	Thomas Johnson Bridge	Patuxent Point Parkway	2	2	2	4	2031 2034
318			NRS	C-SMMPO	Reconstruct	MD 5 Great Mills Project	MD 471 Indian Bridge Road	MD 246 Great Mills Road			2	2	2026 2030
VDOT													
Federal Lands													
319	CE3061 CE3791	433 32610	FED3A		Construct	Manassas National Battlefield Park Bypass	US 29 West of Centreville-Lee Highway at Pageland Lane	East of Gainesville, via 234 Bull Run Drive	0	1	0	4	2040
320	CE3061 CE3791	434 32611	FED3B		Remove/Close	US 29 Lee Highway	Pageland Lane	Bridge over Bull Run Paddington Lane	2	2	2/4	0	2040
321	CE3061 CE3791	435 32612	FED3C		Remove/Close	VA 234 Sudley Road	Southern Park Boundary Battlevue Parkway	Sudley Springs (north of park)- Featherbed Lane			2	0	2030 2040
Interstate													
322	CE1759	399	VI1AJ	81009	Construct	I 66 Vienna Metro Station bus ramp (duplicate project with ConID 759, below)	Transit Ramps- from EB & to WB	-@Vaden Dr.	1	1	0	2	2022 completed

NOTE: Shaded areas represent changes from the 2022 Update to Visualize 2045. Blue = removed. Yellow = added or changed.

VISUALIZE 2050 AIR QUALITY CONFORMITY NETWORK INPUTS (highway)

DRAFT 2/29/2024

	PIT Project ID	Con ID	Project ID	Agency ID	Improvement	Facility	From	To	Fr	To	Lanes From	Lanes To	Completion Date
323	CE2096	350	VI1AG	78827	Reconstruct	I 66 WB Operational/Spot Improvements	Lee Highway/Spout Run On-Ramp	Glebe Road Off-Ramp	1	1	2	3	2022 completed
324	CE3448 T6540	718	VI1Y	105500	Widen / Revise Operations	I-66	I-495	US 50	1	1	3 general purpose in each direction + 1 HOV in peak direction during peak period	3 general purpose + 1 Auxiliary + 2 HOT each direction	2022 completed
325	CE3448 T6540	851	VI1Z	105500	Widen / Revise Operations	I-66	US 50	US 29 Centreville	1	1	4 general purpose in each direction off-peak, 3 general purpose + 1 HOV in peak direction during peak period	3 general purpose + 1 Auxiliary + 2 HOT in each direction (2 Aux per direction btwn VA 286 & VA 28 only)	2022 completed

NOTE: Shaded areas represent changes from the 2022 Update to Visualize 2045. Blue = removed. Yellow = added or changed.

VISUALIZE 2050 AIR QUALITY CONFORMITY NETWORK INPUTS (highway)

DRAFT 2/29/2024

	PIT Project ID	Con ID	Project ID	Agency ID	Improvement	Facility	From	To	Fr	To	Lanes From	Lanes To	Completion Date
326	CE3448 T6540	852	VI1ZA	105500	Widen / Revise Operations	I-66	US 29 Centreville	University Boulevard Ramps (new interchange for HOT only)	1	1	4 general purpose in each direction off-peak, 3 general purpose + 1 HOV in peak direction	3 general purpose + 2 HOT in each direction	2022 completed
327	CE3448 T6540	852	VI1ZA1	105500	Widen / Revise Operations	I-66	VA 234 Bypass	University Blvd.	1	1	4 general purpose in each direction off-peak, 3 general purpose + 1 HOV in peak direction during peak period	3 general purpose + 2 HOT in each direction (+1 Auxiliary each direction between US 29 and VA 234 Bypass only)	2022 completed
328	CE3448 T6540	853	VI1ZB	105500	Widen / Revise Operations	I-66	University Boulevard Ramps (new interchange for HOT only)	US 15 (1.2 miles west of)	1	1	4 general purpose in each direction off-peak, 3 general purpose + 1 HOV in peak direction during peak period	3 general purpose + 2 HOT in each direction (+1 Auxiliary each direction between US 29 and VA 234 Bypass only)	2040 2024
329	CE3484	862	VI1X1		Revise Operations	I-66	I-495	US 29 near Rosslyn	1	1	HOT 2 in peak direction during peak period	HOT 3 in peak direction during peak period	2022 completed

NOTE: Shaded areas represent changes from the 2022 Update to Visualize 2045. Blue = removed. Yellow = added or changed.

VISUALIZE 2050 AIR QUALITY CONFORMITY NETWORK INPUTS (highway)

DRAFT 2/29/2024

	PIT Project ID	Con ID	Project ID	Agency ID	Improvement	Facility	From	To	Fr	To	Lanes From	Lanes To	Completion Date
330	CE3484	863	V11X2		Revise Operations	I-66	I-495	US-29 near Rosslyn	1	1	HOT 3 in-peak direction during peak period	HOT 3 in-both directions during peak period	2040
331	CE3448	7221			Study	I-66 Revise Operations by 2024	I-495	US-29 near Rosslyn			HOT 3 in-peak direction during peak period	HOT 3 in-both directions during peak period	not coded
332	CE3484	788	V11XB		Construct/Widen	I-66 Eastbound	VA 267 DTR	Washington Blvd. Off-Ramp	1	1	3	4	2040 2020 completed
333	CE3484	789	V11XC		Construct/Widen	I-66 Eastbound	Washington Blvd. Off-Ramp	North Fairfax Drive	1	1	2	3	2040 2020 completed
334	CE3484	786	V11XD		Construct/Widen	I-66 Westbound	Sycamore Street	Washington Blvd. On-Ramp	1	1	2	3	2040 2020 completed
335	CE3448-T6540	752	I66R31 I66R32 I66R34		Construct	I-66 Express Lanes Interchange Ramps	EB Expr to SB GP NB GP to WB Expr SB Expr to WB Expr EB Expr to NB GP SB GP to WB Expr	I-495 Interchange (Capital Beltway GP and Express Lanes)	0	1	0	1	2022 completed
336	CE3448-T6540	753	I66R37		Construct	I-66 General Purpose Lanes Interchange Ramp	NB Expr to WB GP (modification of existing loop ramp)	I-495 Interchange (Capital Beltway GP and Express Lanes)	0	1	0	1	2022 completed
337	CE3448-T6540	754			Relocate / Reconstruct	I-66 Interchange	Dual-lane loop ramp from NB I-495 GP to I-66 GP relocated to dual-lane flyover & existing ramp modified to NB I-495 GP to I-66 WB HOT	@ I-495	1	1	2	2	2022 completed
338	CE3448-T6540	755			Reconstruct	I-66 Interchange	EB GP to SB GP WB GP to SB GP WB GP to SB Expr NB GP to EB GP SB GP to WB GP	@ I-495	1	1	—	—	2022 completed
339	CE3448-T6540	756	I66R29		Construct	I-66 flyover ramp	EB general purpose to EB express lanes	.5 mile east of VA 243	0	1	0	1	2022 completed
340	CE3448-T6540	759	I66R27 I66R28		Construct	I-66 Express Lanes Interchange Ramps (duplicate project with ConID 399, above)	EB off-ramp, WB on-ramp to/from I-66 Express lanes	@Vaden Dr.	1	1		Bus / HOV-3 / HOT from proposed Express Lanes	2022 completed
341	CE3448-T6540	983	I66R43		Remove	I-66 ramp	remove existing EB on-ramp from Saintsbury Dr. at Vaden Dr.						2022 completed

NOTE: Shaded areas represent changes from the 2022 Update to Visualize 2045. Blue = removed. Yellow = added or changed.

VISUALIZE 2050 AIR QUALITY CONFORMITY NETWORK INPUTS (highway)

DRAFT 2/29/2024

	PIT Project ID	Con ID	Project ID	Agency ID	Improvement	Facility	From	To	Fr	To	Lanes From	Lanes To	Completion Date
342	CE3448-T6540	762	V11YA		Reconstruct	I-66 Interchange	Reconfigured interchange to eliminate C-D roads & replacemodify EB to NB loop ramp with flyover& WB to SB flyover	@ Chain Bridge Road (VA 123)	1	1	—	—	2022 completed
343	CE3448-T6540	763	I66R25 I66R26		Construct	I-66 Express Lanes Interchange Ramps	EB on-ramp, EB off-ramp, WB on-ramp, WB off-ramp to/from I-66 Express Lanes	@ Chain Bridge Road (VA 123)	0	1	0	1	2022 completed
344	CE3448-T6540	765	I66R23 I66R24		Construct	I-66 Express Lanes Interchange Ramps	EB on-ramp, WB off-ramp to/from I-66 Express lanes	@ Lee Jackson Mem Highway (US 50)	0	1	0	1	2022 completed
345	CE3448-T6540	766	I66R62		Construct	I-66 Express Lanes Interchange ramps	EB Express Lanes on-ramp from NB US 50	@ Lee Jackson Mem Highway (US 50)	0	1	0	1	2040 2024
346	CE3448-T6540	767	I66R19A I66R20A I66R21A I66R22A		Relocate / Reconstruct	I-66 Interchange	Reconfigure interchange with Express lanes ramps shifted to the north of I-66; ; Construct new EB off-ramp, WB on-ramp to/from I-66 Express lanes	@ Monument Drive (US 50)	1	1	Bus / HOV-2 Reversible by time of day	Bus / HOV-3 / HOT Movements in both directions 24 hrs/day	2040 2024
347	CE3448-T6540	768	I66R19 I66R20 I66R21 I66R22		Reconstruct / Revise Operations / Construct	I-66 Interchange	Conversion of existing HOV ramps to HOT; Construct new EB off-ramp, WB on-ramp to/from I-66 Express lanes	@ Monument Drive (US 50)	1	1	Bus / HOV-2 Reversible by time of day	Bus / HOV-3 / HOT Movements in both directions 24 hrs/day	2022 completed
348	CE3448-T6540	769	I66R17 I66R18		Revise Operations	I-66 Express Lanes Interchange Ramps	The existing reversible HOV ramp at Stringfellow Road will be expanded and converted to Express Lanes ramps providing access to and from the east using the Express Lanes. The new ramps will allow two-way traffic to and from the Express Lanes toward the Beltway 24 hours a day.	@ Stringfellow Road	1	1	Bus / HOV-2 Reversible by time of day	Bus / HOV-3 / HOT both directions 24 hrs / day	2022 completed
349	CE3448-T6540	771	I66R16		Construct	I-66 flyover ramp	EB express lanes to EB general purpose	1.5 miles west of VA 286	0	1	0	1	2022 completed
350	CE3448-T6540	772	I66R41		Construct	I-66 slip ramp	EB general purpose to EB express lanes	2.5 miles west of VA 286	0	1	0	1	2022 completed
351	CE3448-T6540	773	I66R15		Construct	I-66 flyover ramp	WB express lanes to WB general purpose	1 mile west of VA 286	0	1	0	1	2022 completed

NOTE: Shaded areas represent changes from the 2022 Update to Visualize 2045. Blue = removed. Yellow = added or changed.

VISUALIZE 2050 AIR QUALITY CONFORMITY NETWORK INPUTS (highway)

DRAFT 2/29/2024

	PIT Project ID	Con ID	Project ID	Agency ID	Improvement	Facility	From	To	Fr	To	Lanes From	Lanes To	Completion Date
352	CE3448-T6540	774	I66R42		Construct	I-66 slip ramp	WB general purpose to WB express lanes	2.0 miles west of VA 286	0	1	0	1	2022 completed
353	CE3448-T6540	776	I66R11 I66R12 I66R13 I66R14 I66R40		Construct	I-66 Express Lanes Interchange Ramps	EB Expr to NB GP WB Expr to NB GP SB GP to EB Expr SB GP to WB Expr NB GP to EB Expr	Route 28 Interchange	0	1	0	1	2022 completed
354	CE3448-T6540	916	I66R61		Construct	I-66 Express Lanes Interchange ramps	SB HOV to WB Expr	Route 28 Interchange	0	1	0	1	2040 2024
355	CE3448-T6540	917	I66R45		Construct	I-66 flyover ramp	EB general purpose to EB Express Lanes	.65 miles east of VA Bus 234	0	1	0	1	2022 completed
356	CE3448-T6540	920	I66R46		Construct	I-66 flyover ramp	WB Express Lanes to WB general purpose	.65 miles east of VA Bus 234	0	1	0	1	2022 completed
357	CE3448-T6540	778	I66R9 I66R10		Construct	I-66 Express Lanes Interchange Ramps	EB on-ramp, WB off-ramp to/from I-66 Express lanes	@ Balls Ford Road / Ashton Avenue Connector 1.25 mile west of VA Bus 234	0	1	0	1	2022 completed
358	CE3448-T6540	779	I66R7 I66R8		Construct	I-66 Express Lanes Interchange Ramps	EB on-ramp, WB off-ramp to/from I-66 Express lanes	@ Cushing Road Park-Ride Lot .5 mile east of VA 234 Bypass	0	1	0	1	2040 2024
359	CE3448-T6540	855	I66R38 I66R39		Construct	I-66 Express Lanes Interchange Ramps	EB off-ramp, WB on-ramp to/from I-66 Express lanes	@ VA 234 Bypass to/from south of I-66	0	1	0	1	2040 2024
360	CE3448-T6540	781	I66R5 I66R6		Construct	I-66 Express Lanes Interchange Ramps	EB on-ramp, WB off-ramp to/from I-66 Express lanes	@ University Boulevard .75 mile east of US 29	0	1	0	1	2022 completed
361	CE3448-T6540	784	I66R1 I66R1A I66R2 I66R2A		Construct	I-66 Express Lanes Interchange Ramps	EB on-ramp & off-ramp, WB on-ramp & off-ramp to/from I-66 Express lanes	@ New connector road between Heathcote Boulevard and VA 55 approx .5 mile west of US 15	0	1	0	1	2040 2024
362	CE3448-T6540	785	VSP49C		Construct	I-66 Express Lanes Access Connector Road	Heathcote Boulevard Extension	John Marshall Highway (VA 55)	0	1	0	1	2040 2024
363	CE2147	270	VI2AC		Reconstruct	I-95 Interchange	VA-613 Van Dorn Street		1	1			2030
364	CE3556				Construct	I-95 HOT lanes ramp	.25 miles south of Russell Road (Exit 148)	Russell Road	0	1	0	1	2022 2023 completed
365	CE2667	378	BRAC	BRAC0005	Construct	I 95 NB Off Ramp at Newington	I-95 NB	Fairfax County Parkway NB	1	1	0	1	2020 completed
366	CE2668	8	BRAC0004 / VI2ra		Construct	I 95 Reversible Ramp (Colocated w/ existing slip ramp from HOV to GP lanes)	I 95 HOV/BUS/HOT Lanes (Located N of Rte. 7100/I 95 I/C Phase II DAR)	EPG Southern Loop Road AM Only	0	1	0	1	2025 2023 completed

NOTE: Shaded areas represent changes from the 2022 Update to Visualize 2045. Blue = removed. Yellow = added or changed.

VISUALIZE 2050 AIR QUALITY CONFORMITY NETWORK INPUTS (highway)

DRAFT 2/29/2024

	PIT Project ID	Con ID	Project ID	Agency ID	Improvement	Facility	From	To	Fr	To	Lanes From	Lanes To	Completion Date
367		16	VI2r43a		Construct	I 95 HOV/Bus/HOT Ramp SB Gen Purpose Lanes to SB HOV/Bus/HOT lanes	Between Dumfries Rd. and Joplin Rd.		0	1	0	1	2018 completed
368		18	VI2r45a		Construct	I 95 HOV/Bus/HOT Ramp NB HOV/Bus/HOT lanes to NB Gen Purpose Lanes	Between Joplin Rd. and Russell Rd.		0	1	0	1	2018 completed
369	T6682	969	VI2X		Construct	I-95 Auxiliary Lane SB	VA 123	VA 294	1	1	0	1	2022 2023 completed
370	CE3697-T11510	1011	VI2R48		Construct	I-95 Opitz Drive Reversible Ramp	I-95 Express Lanes at Opitz Drive	Opitz Drive	1	1	0	1	2022 2024
371	CE3811	28920			Widen/Revise Operations	I 95 Express Lanes- bi-directional operation	Turkeycock Run	Opitz Blvd.	1	1	reversible	bi-directional : 3 lanes peak direction, 2 lanes off-peak direction	2030
372	CE3811	38801			Widen/Revise Operations	I 95 Express Lanes- new northbound and southbound access ramps to serve bi-directional operation			1	1			2030
373	CE3814	24840 28929			Construct	I 95/I 495 Express Lanes	Springfield Interchange	MD 210	1	1	varies	+2 express in each direction	2031
374	CE3814	24840 28929			Construct	I 95/I 495 Express Lanes access ramps	Van Dorn St., US 1, I-295, and MD 210		1	1			2031
375	CE3813	28925			Revise Operations	I 95 Express Lanes- truck access	I-95/Springfield Interchange	I-95/Route 17 Exit	1	1			2030
376	CE3812	28921			Revise Operations	I 495 Express Lanes- truck access	I-95/I-395 Interchange	American Legion Bridge	1	1			2030
377	CE3272	20	VI4laux1		Widen	I 495 Capital Beltway NB Auxiliary Lane	North of Hemming Ave. Underpass	Braddock Road Off Ramp	1	1	4+2	5+2	2030
378	CE3272	21	VI4laux2		Widen	I 495 Capital Beltway SB Auxiliary Lane	Braddock Road On Ramp	North of Hemming Ave. Underpass	1	1	4+2	5+2	2030

NOTE: Shaded areas represent changes from the 2022 Update to Visualize 2045. Blue = removed. Yellow = added or changed.

VISUALIZE 2050 AIR QUALITY CONFORMITY NETWORK INPUTS (highway)

DRAFT 2/29/2024

	PIT Project ID	Con ID	Project ID	Agency ID	Improvement	Facility	From	To	Fr	To	Lanes From	Lanes To	Completion Date
379	CE3272	22	VI4Iaux3		Widen	I 495 Capital Beltway NB Auxiliary Lane	Braddock Road On Ramp	VA 236 Off Ramp	1	1	4+2	5+2	2030
380	CE3272	24	VI4Iaux5		Widen	I 495 Capital Beltway NB Auxiliary Lane	VA 236 On Ramp	Gallows Road Off Ramp	1	1	4+2	5+2	2030
381	CE3272	25	VI4Iaux6		Widen	I 495 Capital Beltway SB Auxiliary Lane	Gallows Road On Ramp	VA 236 Off Ramp	1	1	4+2	5+2	2030
382	CE3272	29	VI4Iaux10		Widen	I 495 Capital Beltway NB Auxiliary Lane	US 50 On Ramp	I 66 Off Ramp	1	1	5+2	6+2	2030
383	CE3272	32	VI4Iaux13		Widen	I 495 Capital Beltway SB Auxiliary Lane	VA 7 On Ramp	I 66 Off Ramp to WB	1	1	4+2	5+2	2030
384	CE3272	35	VI4Iaux16		Widen	I 495 Capital Beltway SB Auxiliary Lane	VA 123 On Ramp	VA 7 Off Ramp	1	1	5+2	6+2	2030
385	CE3272	38	VI4Iaux19		Widen	I 495 Capital Beltway NB Auxiliary Lane	VA 267 On Ramp	VA 193 Off Ramp	1	1	4+2	5+2	2025
386	CE3272	39	VI4Iaux20		Widen	I 495 Capital Beltway SB Auxiliary Lane	VA 193 On Ramp	VA 267 Off Ramp	1	1	4+2	5+2	2035
387	CE2069-T11577	999	VI4IRMP1		Construct	I-495 Express Lanes On-Ramp	Dulles Connector Road WB	I-495 Express Lanes NB	0	1	0	1	2025 2026
388	CE2069-T11577	1001	VI4IRMP2		Construct	I-495 NB Exchange Ramp	I-495 NB GP Lanes at Dulles Toll Road	I-495 NB Express Lanes	0	1	0	1	2045 2026
389	CE2069-T11577	1002	VI4IRMP3		Construct	I-495 SB Exchange Ramp	I-495 SB GP Express Lanes at Dulles Toll Road	I-495 SB GP Lanes	0	1	0	1	2045 2026
390	CE2069-T11577	40	VI4K		Construct	I 495 Capital Beltway HOT Lanes	American Legion Bridge	George Washington Parkway (south of)	1	1	8	8+4	2025 2026

NOTE: Shaded areas represent changes from the 2022 Update to Visualize 2045. Blue = removed. Yellow = added or changed.

VISUALIZE 2050 AIR QUALITY CONFORMITY NETWORK INPUTS (highway)

DRAFT 2/29/2024

PIT Project ID	Con ID	Project ID	Agency ID	Improvement	Facility	From	To	Fr	To	Lanes From	Lanes To	Completion Date	
391	CE2069-T11577	41	VI4KA		Construct	I 495 Capital Beltway HOT Lanes	George Washington Parkway (south of)	Old Dominion Drive (south of)	1	1	8	8+4	2025 2026
392	CE3186	49	Part VI4IHOTa		Relocate	I 495 Capital Beltway Interchange Flyover Ramp (Phase 4)	EB Dulles Airport Access Highway to NB General Purpose	at VA 267 Dulles Toll Road	1	1	1	1	2025 2013 completed
393	CE3186	519	VI4IRMP6		Construct	I 495 Capital Beltway Interchange (Phase IV)	Provide SB HOT to EB HOV	at VA 267 Dulles Toll Road	1	1			2025 2013 completed
394	CE3186	519	VI4IRMP5		Construct	I 495 Capital Beltway Interchange (Phase IV)	Provide EB DTR to NB HOT	at VA 267 Dulles Toll Road	1	1			2025 2013 completed
395	CE3186	517	Part VI4IHOTa		Widen	I 495 Capital Beltway Interchange Ramp (Phase III DTR)	Widen EB DTR ramp to 2 NB lanes	NB GP Lanes	1	1	1	2	2045 2013 completed
396	CE3186	520	VI4IRMP7		Construct	I 495 Capital Beltway Interchange Flyover Ramp (Phase 4)	I 495 Capital Beltway NB GP lanes	Dulles Airport Access Highway (DAAH) WB	0	1	0	1	2045 2013 completed
397	CE3208	50	VI4IHOTb		Construct	I 495 Capital Beltway Interchange Ramp (Phase II, Ramp 3 DAAH)	I 495 Capital Beltway SB	Dulles Airport Access Highway WB	0	1	0	1	2025 2013 completed
398	CE3680	991	VP21G		Widen	Dulles Greenway - eastbound only	Toll Plaza	Dulles Toll Road	1	1	2	3	2019 completed
399	CE3838	38420			Widen	Dulles Toll Road Cleveland Ramp	SB I-495 off ramp 19A	Scotts Run Crossing	1	1	1/2	2/3	2029
400	CE3671	970	VP15F		Widen	VA 267 Dulles Toll Road - eastbound only	Dulles Greenway	Centreville Rd. off-ramp	1	1	4	5	2019 completed
401	CE3152	534	VP15E		Construct	VA 267 Dulles Toll Road Ramp	New Boone Boulevard Extension at Ashgrove		0	1	0	2	2027 2040
402	CE3153	535	VP15B		Construct	VA 267 Dulles Toll Road Ramp	Greensboro Drive @ Tyco Road		0	1	0	2	2026 2040
403	CE1965	236	MW1	MW1	Widen	Dulles Airport Access Road	Dulles Airport	VA-123 I-495 Capital Beltway	1	1	4	6	2020 2040
Primary													
404	CE3291	549	VP1AH	90339	Widen	US 1 Richmond Highway	Fuller Road	Stafford County Line	2	2	4	6	2040
405	CE2594-T6692	631	VP1AD	90339	Widen	US 1 Fraley Blvd. (Town of Dumfries)	Brady's Hill Road	VA 234 Dumfries Road	2	2	4	6	2025 2030
406	CE2594	632	VP1ADA		Widen	US 1 Richmond Highway	VA 234 Dumfries Road	Cardinal Drive/Neabsco Road	2	2	4	6	2020 2050
407	CE3180	85	VP1AG		Widen	US 1 Richmond Highway	Annapolis Way	Pollock Road Telegraph Rd.	2	2	4	6	2025 2045

NOTE: Shaded areas represent changes from the 2022 Update to Visualize 2045. Blue = removed. Yellow = added or changed.

VISUALIZE 2050 AIR QUALITY CONFORMITY NETWORK INPUTS (highway)

DRAFT 2/29/2024

	PIT Project ID	Con ID	Project ID	Agency ID	Improvement	Facility	From	To	Fr	To	Lanes From	Lanes To	Completion Date
408	CE1942 T6443	322	VP1U		Widen	US 1 Richmond Highway	Mt. Vernon Memorial Highway	VA 626 Sherwood Hall Ln	2	2	4	6	2028
409	CE3173	84	VP1AF	104303	Widen	US 1 Richmond Highway	Featherstone Road	Mary's Way	2	2	4	6	2022
410	CE2161 T6310	239	VP1P	94102	Widen	US 1 Richmond Highway	Mary's Way	Annapolis Way	2	2	4	6	2019 completed
411	CE2161	634	VSP63	100938	Construct	Belmont Bay Drive Extension	US 1	Heron's View Way			0	4	2025 2022 completed
412	CE3331 T6618	653	VP2P	111666	Construct	VA 7 Interchange	At VA 690		2	2	0	4	2025 2027
413	CE3733		VP2JB		Widen	VA 7	VA 9	West Market St.	2	5	5	6	2030
414	CE1870	86	VP2JA	16006	Widen	VA 7 Bypass	VA 7 West Dulles Greenway	US 15 South King Street South VA7/US15 interchange	5	1	4	6	2040
415	CE1870	299	VP2J	16006	Widen	VA 7 Bypass	US 15 South King Street	VA7/US 15 East	5	4 5	4	6	2040 2030
416	CE2105 T6539	221	VP2M		Widen	VA 7	Reston Avenue	Jarrett Valley Dr.	2	2	4	6	2024 2023 completed
417	CE2105	628	VP2Lb		Widen	VA 7 Leesburg Pike	VA 123 Chain Bridge Road	I-495 Capital Beltway	2	2	6	8	2030-2035
418	CE3161	87	VP2N		Widen	VA 7 Leesburg Pike	I-495	I-66	2	2	4	6	2030
419	CE2175	347	VP2B	TBD	Widen	VA 7	Seven Corners	Bailey's Crossroads	2	2	4	6	2030-2040
420	CE3792	36461			Construct	VA 7 Seven Corners Ring Road	West side of interchange on Route 50	East side of interchange on Route 50			0	4	2045
421	CE3162		VP4EA		Widen	US 15 James Madison Highway Overpass	US29 Lee Highway	Haymarket Dr	3	3	2	4	2040
422	CE3162		VP4EC		Widen	US 15 James Madison Highway Overpass	1200' S of RR tracks	1000' N. of RR tracks	3	3	2	4	2030
423	CE3738 CE3608	881	VP4G VP4GA		Widen	US 15	Battlefield Parkway	Montresor Road Whites Ferry Road	2	2	2	4	2026 2027
424	CE3738 CE3608	881 27163	VP4G VP4GB		Widen	US 15	Battlefield Parkway Whites Ferry Road	Montresor Road	2	2	2	4	2026 2029

NOTE: Shaded areas represent changes from the 2022 Update to Visualize 2045. Blue = removed. Yellow = added or changed.

VISUALIZE 2050 AIR QUALITY CONFORMITY NETWORK INPUTS (highway)

DRAFT 2/29/2024

	PIT Project ID	Con ID	Project ID	Agency ID	Improvement	Facility	From	To	Fr	To	Lanes From	Lanes To	Completion Date
425	CE2045	88	VP6H		Widen	VA 28	Fauquier County Line	VA 652 Fitzwater Drive	3	3	2	4	2040 2045
426	CE2045	309	VP6KA	105198	Widen	VA 28	VA 652 Fitzwater Drive	VA 215 Vint Hill Road	3	3	2	4	2019 completed
427	CE2045 T12001	326	VP6MA	96721	Widen	VA 28 Nokesville Road	Godwin Drive	Manassas City limits	3	2	4	6	2019 completed
428	CE2045	89	VP6K	105428	Widen	VA 28 Nokesville Road	Manassas City limits	VA 619 Linton Hall Road	3	3	4	6	2022 completed
429	CE1734	1037	VP6EDD		Convert	VA 28 PPTA Phase II - HOV	I-66	Westfields Blvd	5	5	8+2 aux	6+2 aux + 2 HOV	2040
430	CE1734	873	VP6EDE		Convert	VA 28 PPTA Phase II - HOV	Westfields Blvd	Dulles Toll Road	5	5	8	6+2 HOV	2040
431	CE1734	794	VP6EAA		Widen	VA 28 PPTA Phase II	I 66	Westfields Blvd	5	5	6	8+ 2 aux	2021 completed
432	CE1734		VP6EAB		Widen	VA 28 PPTA Phase II	Westfields	US 50	5	5	6	8	2025-2023 completed
433	CE1734		VP6EBB		Widen	VA 28 PPTA Phase II	US 50	Sterling Blvd.	5	5	6	8	2016 completed
434	CE1734	310	VP6ECC	106651	Widen	VA 28 PPTA Phase II	Sterling Blvd.	VA 7	5	5	6	8	2025 2023 completed
435	CE3479- T6450	737	VP6N	108720	Widen	VA 28 Centreville Road	US 29	Prince William County Line	2	2	4	6	2023 completed
436	CE1865	995	VP6O		Construct	VA 28 Manassas Bypass	VA 234 Sudley Road	VA 28 Centreville Road in the vicinity of Bull Run	0	5	0	4	2025- 2029
437	CE3383	730		105482	Study	VA 28	US 29	Liberia Avenue					Not Coded
438	CE1956	620	VP7s		Widen	US 29 (add NB lane)	I-66-US 55 (John Marshall Highway)	Entrance to Conway Robinson MSF- Pageland Lane	3	2	4	5 6	2020 2048
439	CE1933	349	VP7AA		Widen	US 29	ECL City of Fairfax (vic. Nutley St.)	Espana Court	2	2	4	6	2040
440	CE1933	625	VP7AB		Widen	US 29	Espana Court	I-495 Capital Beltway	2	2	4	6	2040
441	CE3474 T6604	731	VP7T		Widen	US 29 Lee Highway	VA 659 Union Mill Road	Buckleys Gate Drive	2	2	4	6	2024 2027
442	CE2182	319	VP8H		Widen	US 50	ECL City of Fairfax	Arlington County Line	2	2	4	6	2025 2040
4423	CE3739	2500	VP25		Construct	US 50 North Collector Road / Tall Cedars Parkway Extension	Tall Cedars Parkway	VA 28/ Air and Space Museum	0	2	0	4	2029 2033

NOTE: Shaded areas represent changes from the 2022 Update to Visualize 2045. Blue = removed. Yellow = added or changed.

VISUALIZE 2050 AIR QUALITY CONFORMITY NETWORK INPUTS (highway)

DRAFT 2/29/2024

	PIT Project ID	Con ID	Project ID	Agency ID	Improvement	Facility	From	To	Fr	To	Lanes From	Lanes To	Completion Date
444	CE3694	997	VP16		Widen	VA 55	Route 29	Fayette St.			2	4	2028
445	CE1723 CE2161	245	VP10G	100938	Widen	VA 123	US 1	Annapolis Way Occoquan River	2	2	4	6	2025 2045
446	CE1784	235	VP10H		Widen	VA 123 Ox Road	Howes Rd. Weatherly Way	Fairfax Co. Parkway	2	2	4	6	2030 2045
447	CE1784	337	VP10F	1784	Widen	VA 123 Ox Road	Fairfax Co. Parkway	Burke Center Parkway	2	2	4	6	2030
448	CE1856	300	VP10R		Widen	VA 123	Burke Center Parkway	Braddeock Road	2	2	4	6	2030
449	CE3159	95	VP10S		Widen	VA 123	VA 677 Old Courthouse Road	VA 7 Leesburg Pike			4	6	2030 2040
450	CE3376	595	VP10T		Widen	VA 123 Chain Bridge Road	VA 7 Leesburg Pike	I 495 Capital Beltway	2	2	6	8	2030 2040
451	CE3698	1015	VP10U		Widen	VA 123	VA 267 Dulles Access Road	VA 634 Great Falls Street	2	2	4	6	2030 2040
452	CE3371	590	VP24B		Widen	VA 215 Vint Hill Road	Kettle Run Drive	VA 1566 Sudley Manor Drive	4	4	2	4	2020 completed
453	CE3641				Widen	VA 234 Sudley Road	Grant Road	Godwin Drive	2	2	2	3	2021
454	CE1897	286	VP12O	99482	Construct	VA 234 Bypass Extension North	VA 234 Bypass@I-66 (Prince Wm. Co.)	US 50 (Loudoun Co.)		5		4	2040
455	CE3177	678		105420/ T143- T20906	Construct	VA 234 Bypass Interchange	Balls Ford Road Relocated						2022 completed
456	CE3178	660		T5665	Construct	VA 234 Bypass Interchange	Dumfries Road/Brentsville Road						2024
457	CE1760	311	VP13A		Widen	VA 236	Pickett Road	I-295	2	2	4	6	2035
458	CE2106- CE3843	96 30872	VSF25ea	57167	Widen	VA 286 Fairfax County Parkway	Sunrise Valley	Rugby Road	5	5	4	6	2035 2045
459	CE2106- T6520	320- 30083	VSF25GC		Widen	VA 286 Fairfax County Parkway	US 29	VA 123 Ox Road Nomes Ct.	5	5	4	6	2030 2027
460	CE2106- T13567	320- 29720	VSF25GB		Widen	VA 286 Fairfax County Parkway	VA 123 Ox Road Nomes Ct.	VA 123 Ox Road	5	5	4	6	2030 2028

NOTE: Shaded areas represent changes from the 2022 Update to Visualize 2045. Blue = removed. Yellow = added or changed.

VISUALIZE 2050 AIR QUALITY CONFORMITY NETWORK INPUTS (highway)

DRAFT 2/29/2024

	PIT Project ID	Con ID	Project ID	Agency ID	Improvement	Facility	From	To	Fr	To	Lanes From	Lanes To	Completion Date
461	CE3841	30685	VSF25GA		Widen	VA 286 Fairfax County Parkway	VA 123	Sydenstricker Road	5	5	4	6	2040 2045
462	CE2718	408	VSP23d		Widen	VA 294 Prince William County Parkway	VA 776 Liberia Avenue	VA 642 Hoadly Road	2	2	4	6	2040
463	CE3151-CE3154	106-1033	VP15CD		Construct	Collector-Distributor Rd Westbound (parallels Dulles Toll Rd.)	Route 7 Leesburg Pike	VA 828 Wiehle Avenue	0	0	0	0 +1	2037
464	CE3154	107	VP15CDE		Construct	Collector-Distributor Rd Eastbound (parallels Dulles Toll Rd.)	VA 828 Wiehle Avenue	Route 7 Leesburg Pike	0	0	0	0 +1	2036
465	CE3154-CE3151	1033	VP15CD2		Construct	Collector-Distributor Rd Westbound (parallels Dulles Toll Rd.)	Route 7 Leesburg Pike	Spring Hill Rd.			0	+2	2035 2040
466	CE3151	1032	VP15CDE2		Construct	Collector-Distributor Rd Eastbound (parallels Dulles Toll Rd.)	Spring Hill Rd.	Route 7 Leesburg Pike			0	+2	2035 2040
Urban													
467	CE2139	313	VU28B	100518	Construct	Battlefield Parkway	US 15 south of Leesburg	Dulles Greenway	0	2	0	4	2020 completed
468	CE3222	52	VU30F	50100-5100	Widen/Reconstruct	East Elden Street	Monroe Street	Fairfax County Parkway	3	2	4	6	2026 2029
469	CE1783	328	VU52	77378	Widen	Eisenhower Avenue	Mill Road	Holland Lane	3	3	4	6	2023 completed
470	CE3851	34662			Construct	Euclid Avenue	current terminus	Centreville Rd.			0	2	2040
471	CE3286	681	VU56		Construct	Farrington Avenue	Van Dorn Street at Eisenhower Avenue	Edsall Road	0	4	0	2	2034
472	CE3858				Construct	South Street (Fairfax City)	University Dr.	Chain Bridge Rd.	0	4	0	2	2029
473	CE1952-T6537	267-25140	VU10B		Widen/Reconstruct	Spring Street	Herndon Parkway (East)/Spring Street	Fairfax County Parkway Interchange	3	2	4	6	2024
474	CE2073-T6203	232	VU33	102895	Widen	Sycolin Road	VA7/US 15 Bypass	SCL of Leesburg	4	4	2	4	2027 2021 completed
Secondary													
Arlington County													
475	CE2830	411	AR17a		Widen	Washington Boulevard	Wilson	Kirkwood	3	3	3	4	2022 completed
476	CE3677	987	AR30		Convert to 2-way	27th Street South	US-1	Crystal Drive	4	4	4	4	2019 completed
477	CE3678	988	AR31		Demolish	South Clark Street	12th Street South	20th Street South	4	0	2	0	2019 completed

NOTE: Shaded areas represent changes from the 2022 Update to Visualize 2045. Blue = removed. Yellow = added or changed.

VISUALIZE 2050 AIR QUALITY CONFORMITY NETWORK INPUTS (highway)

DRAFT 2/29/2024

	PIT Project ID	Con ID	Project ID	Agency ID	Improvement	Facility	From	To	Fr	To	Lanes From	Lanes To	Completion Date
478	CE3826	29341			Convert to 2-way	North Fort Myer Dr.	North Nash St.	North Fairfax Drive					2031
479	CE3847	31420			Reduce Capacity	Potomac Ave	South Glebe Road	Arlington /Alexandria Line	4	4	4	3	2028
Fairfax County													
480	CE1849	336	FFX2a		Widen	VA 602 Reston Pkwy.	VA 5320 Sunrise Valley Dr. South Lakes Dr.	VA 5320 Sunrise Valley Dr.—Dulles Toll Rd.	3	3	4	6	2040 2045
481	CE1849		FFX2ab		Widen	VA 602 Reston Pkwy.	VA 5320 Sunrise Valley Dr. —Dulles Toll Rd.	Sunset Hills Road	3	3	4	6	2000 completed
482	CE1849	4041	FFX2b		Widen	VA 602 Reston Pkwy.	New Dominion Parkway	VA 606 Baron Cameron Avenue	3	3	4	6	2040
483	CE3475	732	VSF44		Widen	VA 608 Frying Pan Road	VA 28 Sulley Road	VA 657 Centreville Road	3	3	2	4	2020 2045
484	CE2186	218	VSF4ca	218	Widen	VA 611 Telegraph Road	Leaf Road North	VA 635 Hayfield Road	3	3	2	4	2040 2045
485	CE2186	298	VSF4i	298	Widen	VA 611 Telegraph Road	VA 635 Hayfield Road	VA 613 (Van Dorn St.) Kings Highway	3	3	2	4	2040 2045
486	CE2186	62	VSF4h	11012	Widen	VA 611 Telegraph Road	VA 613 S. Van Dorn	VA 644 Franconia Road	3	3	2	3	2040 2045
487	CE3275	63	VSF15b		Construct	VA 613 Van Dorn Interchange	VA 644 Franconia Road		0	0	0	0	2035
488	CE2158	301	VSF8g		Widen	VA 620 Braddock Road	VA 286 Fairfax County Parkway	VA 123 Ox Road	3	3	4	6	2040 2045
489	CE2206	334	VSF8j		Construct/Widen	VA 620 New Braddock Rd.	VA 28	US 29 @ VA 662 (Stone Rd.)	0/4	3	0/2	4	2025
490	CE3478	736	VSF45		Widen	VA 636 Hooes Road	VA 286 Fairfax County Parkway	VA 600 Silverbrook Road	3	3	2	4	2025 2035
491	CE1936 T6247	302	VSF10a		Widen	VA 638 Rolling Road	Viola St.	VA 644 Old Keene Mill Road	3	3	2	4	2026
492	CE3301	586-31368	VSF10E	102905	Widen	VA 638 Rolling Road	Rt 5297 DeLong Drive	Virginia Dr.	3	3	2	4	2035 2045
493	CE1859	217	FFX11a		Widen	VA 645 Stringfellow Road	US 50	VA 286 Fairfax County Parkway	3	3	2	4	2040
494	CE3156	64	VSF37a		Widen	VA 650 Gallows Road	VA 7 Leesburg Pike	VA 699 Prosperity Ave.	2	2	4	6	2038
495	CE2833	65	VSF33a Study		Widen	VA 651 Guinea Road	VA 6197 Roberts Parkway	VA 4807 Pommeroy Drive	3	3	2	4	2040 not coded

NOTE: Shaded areas represent changes from the 2022 Update to Visualize 2045. Blue = removed. Yellow = added or changed.

VISUALIZE 2050 AIR QUALITY CONFORMITY NETWORK INPUTS (highway)

DRAFT 2/29/2024

	PIT Project ID	Con ID	Project ID	Agency ID	Improvement	Facility	From	To	Fr	To	Lanes From	Lanes To	Completion Date
496	CE1748	255	FFX12a		Construct	VA 651 New Guinea Road	VA 123 Ox Road	Roberts Road	0	3	0	4	2040
497	CE3442	688	VSF17b		Construct	VA 655 Shirley Gate Road	VA 286 Fairfax County Parkway	VA 620 Braddock Road	0	3	0	4	2030 2028
498	CE1939	346	VSF18C	74749	Widen	VA 657 Centreville Road	VA 8390 Metrotech Dr.	VA 668 McLearn Road	3	3	4-2	6 4	2040 2009 completed
499	CE3150	66	VSF42		Construct	Boone Boulevard Extension	VA 123 Chain Bridge Road	Ashgrove Lane			0	4	2036 2045
500	CE3832	29880	VSF46	724	Construct	Fairbrook Drive	Herndon Parkway	Spring Street	0	4	0	4	2035
501	CE3460	724	VSF46	724	Construct	VA 2677 Frontier Drive	Franconia-Springfield Transportation Center	VA 789 Loisdale Road	0	4	0	4	2030 2032
502	CE3155	69	NRS		Construct	Greensboro Drive WB	Spring Hill Road	Tyco Road	0	4	0	2	2034
503	CE3158	68	VSF43		Widen	Magarity Road	VA 7 Leesburg Pike	VA 694 Great Falls Street			2	4	2027
504	CE3609-T6665	882	VSF48		Construct	Davis Dr. Bridge Rock Hill Road Overpass	VA 5320 (Sunrise Valley Dr.)	VA 209 (Innovation Avenue)	0	4	0	4	2030 2032
505	CE3792				Construct	Seven Corners Ring Road	US 50 west of VA 7	VA 7 East of US 50	0		0	4	2045
506	CE3450 T6583	722	VSF49	112479	Construct	Soapstone Drive 4-Lane Overpass	Sunrise Valley Drive	Sunset Hills Road	0	4	0	4	2027 2034
507	CE3699	1017	VSF50		Construct	Town Center Parkway Underpass of Dulles Toll Road	VA 5320 Sunrise Valley Dr.	VA 675 Sunset Hills Road	0	4	0	4	2030
508	CE3060	442	VSF41	103907	Construct/Widen	VA 8102 Scotts Crossing Rd	VA 123 Dolly Madison Blvd	Jones Branch Dr			0/2	4	2018 completed
Loudoun County													
509		330	VSL1B	97529, 105064	Widen/Upgrade	VA 606/607 Old Ox Rd/Loudoun County Parkway	VA 634 Moran Rd	VA 621 Evergreen Mills Rd	4	3	2	4	2018 completed
510	CE3845				Widen	VA 606 Sterling Rd. Old Ox Road	Shaw Rd.	Rock Hill Road	3	3	4	6	2045
511		566	VSL10E		Widen	VA 607 Loudoun County Parkway	US 50	VA 606 at new Arcola Blvd.	3	3	4	6	2030

NOTE: Shaded areas represent changes from the 2022 Update to Visualize 2045. Blue = removed. Yellow = added or changed.

VISUALIZE 2050 AIR QUALITY CONFORMITY NETWORK INPUTS (highway)

DRAFT 2/29/2024

	PIT Project ID	Con ID	Project ID	Agency ID	Improvement	Facility	From	To	Fr	To	Lanes From	Lanes To	Completion Date
512		275	VSL10bb		Widen/Upgrade	VA 607 Loudoun County Parkway	W&OD Trail	Redskin Park Drive	4	2	4	6	2025
513	CE3736-CE3315	2493	VSL10F		Widen	VA 607 Loudoun County Parkway	Shellhorn Road	Ryan Road	3	3	4	6	2022 2023 completed
514	CE3604	890	VSL2C		Widen	VA 620 Braddock Rd	VA 659	Fairfax County Line	3	3	2	4	2025 2030
515	CE3605	889	VSL2D		Widen	VA 620 Braddock Rd	VA 659	Royal Hunter Drive	4	4	2	4	2025
516	CE3312	580	VSL62A		Widen/Construct	Arcola Mills Dr. (formerly VA 621 Evergreen Mills Road) (Western Segment)	VA 842 Arcola Boulevard	Stone Springs Blvd. VA 659 Belmont Ridge Road Loudoun County Parkway	4	4	2	4	2025 2050
517	CE2209 T6346	335	VSL45		Study Widen	VA 643 Sycolin Road	Leesburg Town Limits	Loudoun Center Place Crosstrails Boulevard	3	3	2	4	not coded 2030
518	CE3502	827	VSL65		Construct	VA 643 Shellhorn Extended	VA 606 Loudoun County Parkway	VA 634 Moran Road	0	4	0	4	2023 2027
519	CE3499-T6659	825	VSL64		Construct	VA 645 Westwind Drive Extended	VA 607 Loudoun County Parkway	VA 606 Old Ox Rd.	0	4	0	4	2026
520	CE3734-CE3607	883	VSL66		Widen	Croscon Ln	Claiborne Parkway	Mooreview Pkwy	4	4	2	4	2025 2027
521	CE1897	72	VSL4ac	76244 & 99481	Widen	VA 659 Belmont Ridge Road	VA 7 Leesburg Pike	VA 267 Dulles Greenway	4	3	2	4	2018 completed
522	CE1897	746	VSL4AD		Widen/Upgrade	VA 659 Belmont Ridge Road	VA 645 Croscon Lane Truro Parish Dr.	VA 267 Dulles Greenway	4	3	2	4	2017 completed
523	CE1897		VSL4AE		Widen/Upgrade	VA 659 Belmont Ridge Road	VA 645 Croscon Lane	VA 645 Croscon Lane Truro Parish Dr.	4	3	2	4	2023 2024
524	CE1897	2523	VSL4G		Widen	VA 659 Belmont Ridge Road	Arcola Mills Drive	Shreveport Drive			2	4	2028 2020 completed
525	CE1818	297	VSL4f		Widen	VA 659 Gum Spring Rd.	Prince William County Line	VA 620 Braddock Road	4	4	2	4	2025 2022 completed
526	CE3306-CE3307-CE3308	573 574-575	VSL61		Construct	VA 842 Arcola Boulevard (Southern Segment)	US 50	VA 607 Loudoun County Parkway Arcola Mills Dr.	0	4	0	4	2022 2024
527	CE3067	76	VSL40F	102858	Construct	VA 901 Claiborne Parkway	VA 645 Croscon Lane	VA 772 Ryan Road	0	4	0	4	2019 completed

NOTE: Shaded areas represent changes from the 2022 Update to Visualize 2045. Blue = removed. Yellow = added or changed.

VISUALIZE 2050 AIR QUALITY CONFORMITY NETWORK INPUTS (highway)

DRAFT 2/29/2024

	PIT Project ID	Con ID	Project ID	Agency ID	Improvement	Facility	From	To	Fr	To	Lanes From	Lanes To	Completion Date
528	CE3309	576	VSL63		Construct	VA 774 Creighton Road (completion of eastern end)	Northstar Boulevard	VA 621 Evergreen Mills Road	0	4	0	4	2020 completed
529	CE3735	2491	VSL56A		Construct	Crosstrail Boulevard	VA 625 Sycolin Road	Dulles Greenway	0	4	4	4	2026 2028
530	CE3313 & CE3314	564 & 565	VSL67A		Construct	Dulles West Blvd. Phase I & Phase II	Loudoun County Parkway	Arcola Blvd	0	4	0	4	2022 Complete
531	CE2582-T6602	1031-1013	VSL67B		Construct	Dulles West Blvd. Phase III	Arcola Blvd	Northstar Dr.	0	4	0	4	2025 2027
532	CE3320	30947			Construct	Lockridge Road West	Prentice Dr.	Waxpool Road	0	4	0	4	2030
533	CE3316	568	VSL57		Construct	VA 2298 Mooreview Parkway (Missing Link)	VA 2773 Amberleigh Farm Drive	VA 772 Old Ryan Road	0	4	0	4	2019 completed
534	CE3318-T6634	570	VP12R	106994	Construct	VA 3171 Northstar Boulevard (Missing Link #79)	Evergreen Mills Rd (formerly Shreveport Drive)	US 50	0	3	0	4	2022 2025
535	CE3737-T12002	2495	VP12S		Construct	Northstar Boulevard	Tall Cedars Parkway	Braddock Road	0	3	0	4	2028
536	CE3320	572	VSL59		Construct	Prentice Drive (Western Segment)	VA 607 Loudoun County Parkway	Loudoun Station Drive	0	4	0	4	2026 2030
537	CE3321	556	VSL59-VSL59A		Construct	Prentice Drive (Eastern Segment)	VA 789 Lockridge Road	VA 607 Loudoun County Parkway	0	4	0	4	2026 2031
538	CE3501-T6662	826	VSL48B		Construct	Riverside Parkway	VA 607 Loudoun County Parkway	Ashburn Village Boulevard Extension	0	4	0	4	2022 completed
539	CE3324	559	VSL49B		Construct	Russell Branch Parkway (Western Segment)	VA 659 Belmont Ridge Road	Tournament Parkway	0	4	0	4	2024 2050
540	CE3329	562	VSL60	105783	Construct	Williamson Blvd	VA 1036 Pacific Boulevard	VA 634 Moran Road	0	4	0	4	2025
541	CE3332	555		87106	Widen	VA 2119 Waxpool Road	VA 2070 Demott Road	VA 2020 Ashburn Village Boulevard	4	4	2	4	2018 completed
Prince William County													

NOTE: Shaded areas represent changes from the 2022 Update to Visualize 2045. Blue = removed. Yellow = added or changed.

VISUALIZE 2050 AIR QUALITY CONFORMITY NETWORK INPUTS (highway)

DRAFT 2/29/2024

	PIT Project ID	Con ID	Project ID	Agency ID	Improvement	Facility	From	To	Fr	To	Lanes From	Lanes To	Completion Date
542	CE3187	82	VSP2i	92999	Widen	VA 619 Fuller Road	US 1	VA 619 Fuller Heights Road Relocated			2	4	2025
543	CE3693	996	VSP3D		Widen	VA 621 Devlin Road	Linton Hall Road	Wellington Road			2	4	2028
544	CE2357-T6623	79	VSP3b	80347	Widen/Upgrade	VA 621 Balls Ford Road	Sudley Rd	Doane Drive	4	3	2	4	2022 2023 completed
545	CE2357-T6623	690	VSP64			VA 621 Balls Ford Road Relocated	Doane Drive	Devlin Road	0	3	0	4	2022 2023 completed
546	CE3372	591	VSP66		Construct	VA 627 Van Buren Road	VA 234 Dumfries Road	VA 610 Cardinal Drive	0	4	0	4	2040
547	CE3374-T6541	593	VSP65	107947	Widen	VA 638 Neabsco Mills Road	US 1 Jefferson Davis Highway	Smoke Ct.	3	3	2	4	2023
548		376	VSP5e	103484	Widen	VA 640 Minnieville Road	VA 643 Spriggs Road	VA 234 Dumfries Road	3	3	2	4	2018 completed
549	CE3695	998	VSP17C		Widen	VA 674 Wellington Road	University Boulevard	VA 621 Devlin Road/Balls Ford Road	3	3	2	4	2028
550	CE2145	646 581	VSP17ba		Widen	VA 674 Wellington Road	VA 621 Devlin Road/Balls Ford Road	VA 234 Prince William Parkway Bypass	3	3	2	4	2025 2045
551	CE2145	338 589	VSP17b		Widen	VA 674 Wellington Road	VA 234 Bypass Prince William Parkway	VA 668 Rixlew Lane	3	3	2	4 6	2035 2045
552	CE1754	308	VSP18	VSP18	Widen	VA 676 Catharpin Rd.	VA 55 John Marshall Highway	Heathcote Blvd.	3	3	2	4	2020 2040
553	T13568	35060			Construct	Connor Dr.	Euclid Ave.	Manassas Drive / Railroad Drive	0	4	4	2	2030
554	CE3754	3520			Study	HOV lanes on Dale Blvd/PW Pkwy/Minnieville Rd	Dale Blvd / PW Pkwy / Minnieville Rd						not coded
555	CE3789	32563			Reduce Capacity - bike lanes	Graham Park Road	Old Triangle Road	Purvis Dr.	4	4	4	2	2030
556	CE2876	4123	VU14B		Widen	Liberia Avenue	VA 28	Richmond Avenue			4	6	2025 2027
557	CE1985	401	NRS		Construct	McGraws Corner Dr. / Thoroughfare Rd.	US 29 Lee Highway @ Virginia Oaks Dr.	US 15 @ Thoroughfare Dr.	0	4	0	4	2040
558	CE3308	32540			Widen	VA 704 Pageland Road	VA 234 Sudley Road	US 29			2	4	2045
559	CE2008	325	VSP20C		Widen/Upgrade	VA 1392 Rippon Boulevard Extension	West of Wigeon Way	Rippon VRE Station	4	3	2	4	2030
560	CE3293	642	VSP62a		Construct	Rollins Ford Road	Wellington Road	Linton Hall Road	0	3	0	4	2040
561	CE1921	643	VSP67	104802	Construct	VA 2190 Summit School Road Extension	Telegraph Road	VA 2190 Summit School Road (south end of existing)	4	4	2	4	2025 2027

NOTE: Shaded areas represent changes from the 2022 Update to Visualize 2045. Blue = removed. Yellow = added or changed.

VISUALIZE 2050 AIR QUALITY CONFORMITY NETWORK INPUTS (highway)

DRAFT 2/29/2024

	PIT Project ID	Con ID	Project ID	Agency ID	Improvement	Facility	From	To	Fr	To	Lanes From	Lanes To	Completion Date
562	CE1837-CE1921	257	VSP25c		Widen	VA 1781 Telegraph Rd.	VA 294 (Prince William Pkwy)	Horner Road Park n Ride Lot Access-Caton Hall Rd.	4	4	2	4	2025 2027
563	T11635	83	VSP47e		Construct Widen	University Boulevard	Sudley Manor Drive	Wellington Rd./Progress Ct. Edmonston Dr.	0	3	2	4	2025 2024
564	CE3292	83	VSP47ea		Construct Widen	University Boulevard	Sudley Manor Drive Edmonston Dr.	Wellington Rd./Progress Ct. Devlin Road	0	3	0 2	4	2035
565	CE3810	37168	VSP47f		Construct	University Boulevard	Devlin Road	Wellington Road	0	3	0	4	2035
566	CE2176	904			Construct	Williamson Blvd	Sudley Manor Drive	Portsmouth Road			0	4	2030
FAMPO													
567			VI2RFA		Construct/revise operations	I-95 :HOV/Bus/HOT Lanes- single reversible lane	north of Garrisonville Road (south of Aquia Creek) at flyover	south of Garrisonville Road	1	1	0	1	2018
568			VI2RFB		Construct	I 95 : HOV / Bus / HOT Lanes: Southbound Ramp	South of Garrisonville Road	SB HOT Lanes to SB GP Lanes	1	1	0	1	2018
569			VI2RFC		Construct	I 95 : HOV / Bus / HOT Lanes: Northbound Ramp	South of Garrisonville Road	NB GP Lanes to NB HOT Lanes	1	1	0	1	2018
570			VI2rf		Construct	I 95 : HOV / Bus / HOT Lanes	Rte. 610 (Garrisonville Rd.) in Stafford County	VA 17 Warrenton Rd. (exit 133)	1	1	0	2	2022
571					Study	I 95 : HOV / Bus / HOT Lanes	VA 17 Warrenton Road (exit 133)	VA 17 in Spotsylvania County (exit 126)	1	1	0	2	not coded
572					Construct	I 95 : HOV / Bus / HOT Lanes: Ramp	South of Telegraph Road (North of Aquia Creek)	SB GP Lanes to SB HOT Lanes	1	1	0	1	2022
573					Construct	I 95 : HOV / Bus / HOT Lanes: Ramp	South of Telegraph Road (North of Aquia Creek)	NB HOT Lanes to NB GP Lanes	1	1	0	1	2022
574					Construct	I 95 : HOV / Bus / HOT Lanes: Ramp	North of Garrisonville Road (south of Aquia Creek)	NB GP Lanes to NB HOT Lanes	1	1	0	1	2022
575			VI2RFD		Construct	I 95 : HOV / Bus / HOT Lanes: Ramp	At Courthouse Rd.	NB AM on-ramp	1	1	0	1	2022
576			VI2RFE		Construct	I 95 : HOV / Bus / HOT Lanes: Ramp	at Courthouse Rd.	SB PM off-ramp	1	1	0	1	2022
577			FAI1F		Widen	I-95 northbound	Exit 126 (US 1/VA17)	Exit 130 (VA 3 Plank Rd.)	1	1	3	4	2035
578			FAI1G		Construct	I-95 northbound 3 lane collector distributor road	Exit 130 (VA 3 Plank Rd.)	Exit 133 (VA 17 Warrenton Rd.)	1	1	3	6	2025
579			FAI1H		Widen	I-95 northbound	Exit 133 (VA 17 Warrenton Rd.)	Exit 136 (Centerport Parkway)	1	1	3	4	2045
580			FAI1HA		Construct	I-95 4th auxiliary lane	Exit 133 (VA 17 Warrenton Rd.)	Exit 136 (Centerport Parkway)	1	1	X	X+1	2045
581			FAI1J		Widen	I-95 southbound	Exit 130	Exit 126 (US 1/VA17)	1	1	3	4	2035
582			FAI1K		Construct	I-95 southbound	1.3 miles south of Exit 130	.3 miles north of Truslow Rd	1	1	x	x+3cd	2025
583			FAS22A		Widen	VA-3 (William St)	Gateway Blvd.	William St./Blue Gray Parkway			4	6	2030
584			FAS22		Widen	VA 3 (Spotsylvania)	Chewing Lane	VA 627 (Gordon Rd.)	2	2	4	6	2013
585			FAP6E		Widen	Tidewater Trail 17 Business/VA 2	US Beulah Salisbury Dr.	US 17 Bypass (Mills Dr.)	2	2	2	4	2035
586			FAP6		Widen	US 17	US 1	Hospital Blvd.	2	2		4	2025
587			FAP6C		Widen	US 17 (Warrenton Rd.)	McLane Drive	Stafford Lakes Parkway	2	2	4	6	2020
588			FAP7A		Widen	VA 218 (Butler Rd.)	Carter St.	Castle Rock Dr.	4	4	2	4	2045
Fredericksburg													

NOTE: Shaded areas represent changes from the 2022 Update to Visualize 2045. Blue = removed. Yellow = added or changed.

VISUALIZE 2050 AIR QUALITY CONFORMITY NETWORK INPUTS (highway)

DRAFT 2/29/2024

PIT Project ID	Con ID	Project ID	Agency ID	Improvement	Facility	From	To	Fr	To	Lanes From	Lanes To	Completion Date
589				Construct	Carl D. Silver Pkwy Ext.	current terminus	Gordon Shelton Blvd.			0	4	2035
590		FAU1			Fall Hill Ave./ Mary Washington Blvd. Extension	Mary Wash. Blvd.	Gordon Shelton Blvd.			2	4	2020
591					Lafayette Blvd.	City Limit	VA-3 (Blue & Gray Parkway)				4	2045
592		FAU2			Gateway Blvd. Extended	William St. (PR-3)	Fall Hill Ave (UR-3965)			0	4	2035
Stafford County Secondary												
593		NRS			VA 610	Shenandoah Ln	Orville Rd				6	2021
594		FAS5b			VA 630 (Courthouse Rd)	Austin Ridge Dr.	VA 648 (Shelton Shop Rd)	4	4	2	4	2035
595		FAS13			VA 648 (Shelton Shop Rd.)	VA 610 (Garrisonville Rd)	VA 627 (Mountainview Rd)	4	4	2	4	2035
596		FAS3E		Widen	Garrisonville Rd.	Eustace Rd.	Shelton Shop Rd.			4	6	2045
Spotsylvania County Secondary												
597		FAS26A			VA 606	US 1	I-95				4	2025
598		FAS18B			VA-620 (Harrison Rd.)	US-1 BUS (Lafayette Blvd.)	VA-639 (Salem Church Rd.)			2	4	2035
599		FAS19			VA 636 (Mine Rd./ Hood Dr.)	VA 208 (Courthouse Rd.)	US 1	4	4	2	4	2025
600		FAS19B			VA 636 (Mine Rd./ Hood Dr.)	Falcon Dr. / Spotsylvania Ave	Landsdowne Rd	4	4		4	2035

NOTE: Shaded areas represent changes from the 2022 Update to Visualize 2045. Blue = removed. Yellow = added or changed.



March 1, 2024

AIR QUALITY CONFORMITY ANALYSIS: VISUALIZE 2050 & FY 2026-2029 TIP

DRAFT SCOPE OF WORK

I. INTRODUCTION

The list of projects solicited for the Visualize 2050 National Capital Region Transportation Plan and the FY 2026-2029 Transportation Improvement Program (TIP) is scheduled to be finalized at the May 15, 2024 meeting of the National Capital Region Transportation Planning Board (TPB). This work effort addresses requirements associated with attainment of the ozone National Ambient Air Quality Standards (NAAQS). Volatile organic compounds (VOC) and nitrogen oxides (NOx) are ozone precursor pollutants.

The amended plan must meet air quality conformity regulations: (1) as originally published by the Environmental Protection Agency (EPA) in the November 24, 1993 Federal Register, and (2) as subsequently amended, most recently on March 14, 2012, and (3) as detailed in periodic Federal Highway Administration (FHWA) / Federal Transit Administration (FTA) and EPA guidance. These regulations specify both technical criteria and consultation procedures to follow in performing the assessment.

This scope of work provides a context in which to perform the conformity analyses and presents an outline of the work tasks required to address all regulations currently applicable.

II. FEDERAL REQUIREMENTS

As described in the 1990 Clean Air Act Amendments, conformity is demonstrated if transportation plans and programs:

1. Are consistent with most recent estimates of mobile source emissions budgets
2. Contribute to annual emissions reductions

The federal requirements governing air quality conformity compliance are contained in §93.110 through §93.119 of the Transportation Conformity Regulations (printed April 2012), as follows:

CONFORMITY CRITERIA & PROCEDURES	
All Actions at all times	
§93.110	Latest Planning Assumptions
§93.111	Latest Emissions Model
§93.112	Consultation
§93.113	TCMs
§93.114	Currently conforming Plan and TIP
§93.115	Project from a conforming Plan and TIP
§93.116	CO, PM10 and PM2.5 hot spots
§93.117	PM10 and PM2.5 Control Measures
§93.118 and/or §93.119	Emissions Budget and/or Interim Emissions

§ 93.110 Criteria and procedures: Latest planning assumptions - The conformity determination must be based upon the most recent planning assumptions in force at the time of the conformity determination.

§ 93.111 Criteria and procedures: Latest emissions model - The conformity determination must be based on the latest emission estimation model available.

§ 93.112 Criteria and procedures: Consultation – The conformity must be determined according to the consultation procedures in this subpart and in the applicable implementation plan, and according to the public involvement procedures established in compliance with 23 CFR part 450.

§ 93.113 Criteria and procedures: Timely implementation of TCMs - The transportation plan, TIP, or any FHWA/FTA project which is not from a conforming plan and TIP must provide for the timely implementation of TCMs from the applicable implementation plan.

§93.114 Criteria and procedures: Currently conforming transportation plan and TIP - There must be a currently conforming transportation plan and currently conforming TIP at the time of project approval.

§93.115 Criteria and procedures: Projects from a plan and TIP - The project must come from a conforming plan and program.

§93.116 Criteria and procedures: Localized CO, PM10, and PM2.5 violations (hot spots) -The FHWA/FTA project must not cause or contribute to any new localized CO, PM10, and/or PM2.5 violations or increase the frequency or severity of any existing CO, PM10, and /or PM2.5 violations in CO, PM10, and PM2.5 nonattainment and maintenance areas.

§93.117 Criteria and procedures: Compliance with PM10 and PM2.5 control measures -The FHWA/FTA project must comply with PM10 and PM2.5 control measures in the applicable Implementation Plan.

§93.118 Criteria and procedures: Motor vehicle emissions budget - The transportation plan, TIP, and projects must be consistent with the motor vehicle emissions budget(s).

§93.119 Criteria and procedures: Interim emissions in areas without motor vehicle budgets - The FHWA/FTA project must satisfy the interim emissions test(s).

Assessment Criteria:

Ozone season pollutants will be assessed by comparing the forecast year pollutant levels to the EPA-approved mobile emissions budgets in the 2008 Ozone NAAQS Maintenance Plan. The 2008 Ozone NAAQS Maintenance Plan includes mobile emissions budgets for 2014 (attainment year), 2025 (intermediate year), and 2030 (out year). The 2014 budgets will be used for any analysis year between 2014 and 2024, the 2025 budgets will be used for any analysis year between 2025 and 2029, and the 2030 budgets will be used for any analysis year beyond 2029.

III. POLICY AND TECHNICAL APPROACH

The table below summarizes the key elements of the Policy & Technical Approach:

Pollutants	Ozone Season VOC and NOx
Emissions Model	MOVES4
Conformity Test	<u>Budget Test</u> : Using EPA approved mobile emissions budgets from the 2008 Ozone NAAQS Maintenance Plan
Vehicle Fleet Data	December 2023 vehicle registration data
Geography	8-hour ozone non-attainment area
Network Inputs	Regionally significant projects
Land Activity	Cooperative Forecasts Round 10
HOV/HOT	<u>VA</u> : I-66, I-95, I-395, and I-495 are all HOT3+; all HOV facilities will be HOV2+ through 2050 <u>MD</u> : HOV facility on US 50 will remain HOV2+ through 2050; HOV facility on I-270 will convert from HOV2+ to HOT3+ when additional lanes are added;
Roadway Restrictions	Roadway restrictions, such as truck prohibitions, are reflected in the travel model network using information supplied by the Departments of Transportation
Transit Constraint	No Metrorail “capacity constraint” (removed with March 2018 passage of annual funding for WMATA agreement)
Analysis Years	2025, 2026, 2030, 2040, 2045, and 2050
Modeled Area	6,800 square mile area with 3,722 Transportation Analysis Zones (TAZs)
Travel Demand Model	Gen2/Version 2.4 or latest

IV. CONSULTATION

The TPB adheres to the specifications of the consultation procedures (as outlined in the consultation procedures report adopted by the TPB on May 20, 1998). The TPB will participate in meetings of the Metropolitan Washington Air Quality Committee (MWAQC), its Technical Advisory Committee (MWAQC-TAC), and its Conformity Subcommittee to discuss the Scope of Work, project inputs, and other elements as needed.

V. WORK TASKS

The work tasks associated with the air quality conformity analysis are as follows:

1. Receive project inputs from programming agencies and organize into conformity documentation listings by:
 - Project type, limits, etc.
 - Phasing with respect to forecast years
 - Transit operating parameters, e.g., schedules, service
2. Update Travel Model Base Transit Service to reflect:
 - Service current to December 2023
 - Fares current to May 2024
3. Determine Characteristics of the Motor Vehicle Fleet by Preparing 2023 Vehicle Registration/Vehicle Identification Number (VIN) Data
 - Purchase VIN decoding software
 - Set up and test VIN decoding software
 - Collect and decode VIN data for the District, Maryland, and Virginia
4. Review and Update Land Activity files to reflect Round 10 Cooperative Forecasts:
 - Develop zonal data files
 - Ensure consistent definition of employment throughout the modeled area by applying the “employment definition adjustment factors” to the land activity forecasts.
 - Estimate households by auto ownership, size and household income (done as part of the travel model)
 - Coordinate with agencies outside the MWCOG Cooperative Forecast area, e.g., the Baltimore Metropolitan Council (BMC), the Fredericksburg Area Metropolitan Planning Organization (FAMPO), and the Calvert-St. Mary's Metropolitan Planning Organization (C-SMMPO).
 - Develop trip tables for exogenous/residual travel: 1) through vehicle trips; 2) external-to-internal and internal-to-external vehicle trip ends; 3) taxi, visitor/tourist and school vehicle trips; and 4) airport-passenger auto-driver trips.
5. Prepare forecast-year highway and transit networks including regionally significant projects, as follows:
 - 2025, 2026, 2030, 2040, 2045, and 2050 highway networks
 - 2025, 2026, 2030, 2040, 2045, and 2050 transit network input files
 - Update highway tolls and transit fares as necessary

6. Execute travel demand modeling for years 2025, 2026, 2030, 2040, 2045, and 2050
7. Derive mobile emissions estimates for years 2025, 2026, 2030, 2040, 2045, and 2050 using inputs from the 2008 Ozone NAAQS Maintenance Plan mobile budgets
8. Summarize key inputs and outputs (VMT, mode share, emissions, etc.) of the conformity determination
9. Assess conformity and document results in a report
 - Document methods
 - Draft conformity report
 - Forward to technical and policy committees
 - Make available for public and interagency consultation
 - Receive comments
 - Respond to comments and present to TPB for action
 - Finalize report and forward to FHWA, FTA, and EPA

SCHEDULE:

Timeframe	Activity
January – February 2024	<ul style="list-style-type: none"> • Preliminary inputs due December 29 for the LRTP and Air Quality Conformity (AQC) analysis for staff review and coordination. • Staff will review and compile the conformity table showing changes. Staff to send draft table with changes to agencies for review on February 1. Agencies to provide corrections by February 15. • TPB member agencies submit technical corrections to preliminary inputs and updates based on TPB/interagency consultation to produce final inputs for comment period. • Final project inputs for Visualize 2050 and AQC analysis due to TPB staff for inclusion in comment period documentation on February 15. • TPB staff will reconcile draft financial analysis results and produce preliminary financial plan to reflect project submissions.
March 2024	<ul style="list-style-type: none"> • March 1 - The TPB Technical Committee will review the draft financial plan; projects proposed for inclusion in the conformity analysis, and the draft AQC scope of work. Public comment period starts March 1 on projects and AQC scope of work. • The TPB will receive a briefing on the draft inputs to the plan/AQC analysis and the draft AQC scope of work and the draft financial plan. • Public comment period runs March 1 through March 30 on inputs to the plan/AQC analysis and AQC scope of work. MWAQC TAC will review this information during its March meeting.
April 2024	<ul style="list-style-type: none"> • The TPB will receive a summary of the public comments on the draft inputs to the plan and AQC analysis; agencies sponsoring the projects will have the opportunity to discuss and advise staff on responses. • The TPB will review responses to comments and updates to inputs to the plan and scope of work for the AQC analysis.
Early 2024	<ul style="list-style-type: none"> • EPA anticipated to find new Motor Vehicle Emissions Budgets (MVEBs) in the updated 2008 ozone maintenance plan adequate for use in air quality conformity analyses.
May 2024	<ul style="list-style-type: none"> • The TPB will be asked to accept the comments and approve the inputs and scope, authorizing staff to begin analysis. • Continue financial analysis: (May 2024-March 2025) final revisions, report production
May 2024	<ul style="list-style-type: none"> • TPB staff commence Air Quality Conformity technical analysis after TPB approval
Winter 2024	<ul style="list-style-type: none"> • Transportation Improvement Program (TIP) inputs due for the FY 2026-2029 TIP January 26, 2025. • TPB staff complete financial plan: final revisions, report production.

		<ul style="list-style-type: none"> • TPB staff complete Air Quality Conformity technical analysis and draft report. • TPB staff draft performance analysis for the plan and TIP.
	April 2025	<ul style="list-style-type: none"> • Public comment period on the plan, TIP and the results of AQC analysis for the updated plan and FY 2026-2029 TIP from April 1 – April 30 • The TPB Technical Committee and MWAQC and MWAQC TAC will review the draft results of AQC analysis for the updated plan and FY 2026-2029 TIP during their meetings. • The TPB will receive a briefing on the draft results of the AQC analysis for the plan and TIP.
	May 2025	<ul style="list-style-type: none"> • The TPB will receive a summary of the comments received on the analysis, plan and TIP; the agencies sponsoring the projects will have the opportunity to advise staff on responses to comments.
	June 2025	<ul style="list-style-type: none"> • The TPB will be asked to approve the results of the AQC analysis and adopt the updated plan and the FY 2026-2029 TIP.

VISUALIZE 2050

National Capital Region Transportation Plan

March 1-30, 2024, Public Comment Opportunity
*Summary Table of Draft Regionally Significant for Air Quality Projects
to be completed in 2026 or later*

Project Summary Table - Contents

Transit Projects by State.....	2
Maryland Department of Transportation Projects on Interstate, Primary, or Secondary Roads.....	5
Maryland Secondary Road System Projects.....	7
District of Columbia Roadway Projects	8
Virginia Department of Transportation Projects on Federal Lands, Interstate, Primary, and Urban System Roads.....	11
Virginia Secondary Road System Projects	16

Staff has been made aware of incorrect information in the project database associated with two key projects in Maryland –

- I-495/I-270Y (West Spur) Express Toll Lanes Widening: I-270 to George Washington Memorial Parkway
- I-270 Express Toll Lanes Widening: I-270 Spur to I-370

Thus, the links to these project packets have been disabled and will be reinstated when the information has been updated.

All information provided and linked in this table is being reviewed and will be updated, as necessary.

A reminder that this is supplementary information to the two key pieces of information that the Board will be approving in May which are the Air Quality Conformity Inputs Table and Scope of Work which have remained unchanged during this comment period.

VISUALIZE 2050

National Capital Region Transportation Plan

March 1-30, 2024, Public Comment Opportunity
 Summary Table of Draft Regionally Significant for Air Quality Projects
 to be completed in 2026 or later

Transit Projects by State

TPB Project Title	Cost	Completion Year	Project Type	Safety	Maintenance	Reliability	Affordable and Convenient	Efficient System Operations	Environmental Protection	Resilient Region	Livable and Prosperous Communities
District of Columbia											
Benning Road Streetcar Expansion from Oklahoma Avenue NE to Benning Road Metro Station	\$202,664,372	2030	Streetcar Expansion								
Maryland											
MARC Service Improvements for Brunswick Line	\$1,825,000,000	2045	Rail Service Improvements			☑	☑				☑
MARC Service Improvements for Camden Line	\$726,000,000	2045	Rail Service Improvements			☑	☑				
MARC Service Improvements for Penn Line	\$2,497,000,000	2045	Rail Service Improvements			☑	☑	☑			☑
MD 355 New BRT Expansion from East-West Highway (MD 410) to Clarksburg Road	\$436,081,000	2030	New BRT Expansion	☑	☑	☑	☑	☑	☑	☑	☑
New Hampshire Avenue New BRT Expansion from Coleville Park and Ride to Fort Totten Metro Station	\$285,000,000	2045	New BRT Expansion								
New Purple Line Transitway: Bethesda to New Carrollton	\$3,095,495,039	2027	New Light rail Expansion		☑	☑	☑			☑	
North Bethesda Transitway New BRT Expansion from Montgomery Mall Transit Center to North Bethesda Metro Station	\$115,150,000	2030	New BRT Expansion								
Randolph Road New BRT: from US 29 to Rockville Pike (MD 355)	\$102,000,000	2040	New BRT Expansion								

VISUALIZE 2050

National Capital Region Transportation Plan

March 1-30, 2024, Public Comment Opportunity

Supplementary Material to Explain Draft Regionally Significant for Air Quality Projects (to be completed in 2026 or later)
for Inclusion in Air Quality Analysis of Visualize 2050 and the FY 2026-2029 Transportation Improvement Program as Provided by TPB Member Agencies

TPB Project Title	Cost	Completion Year	Project Type	Safety	Maintenance	Reliability	Affordable and Convenient	Efficient System Operations	Environmental Protection	Resilient Region	Livable and Prosperous Communities
Viers Mills Road New BRT Expansion from Montgomery College. Rockville to Wheaton Metro Station	\$167,358,000	2030	New BRT Expansion	<input checked="" type="checkbox"/>	<input checked="" type="checkbox"/>	<input checked="" type="checkbox"/>	<input checked="" type="checkbox"/>	<input checked="" type="checkbox"/>	<input checked="" type="checkbox"/>	<input checked="" type="checkbox"/>	<input checked="" type="checkbox"/>
Virginia											
Alexandria Passenger Rail Track Expansion	\$185,000,000	2026	Rail Expansion	<input checked="" type="checkbox"/>	<input checked="" type="checkbox"/>	<input checked="" type="checkbox"/>	<input checked="" type="checkbox"/>	<input checked="" type="checkbox"/>	<input checked="" type="checkbox"/>		<input checked="" type="checkbox"/>
Broad Run Track Expansion	\$130,464,180	2027	Rail Expansion	<input checked="" type="checkbox"/>	<input checked="" type="checkbox"/>	<input checked="" type="checkbox"/>	<input checked="" type="checkbox"/>		<input checked="" type="checkbox"/>	<input checked="" type="checkbox"/>	<input checked="" type="checkbox"/>
Crystal City Transitway Expansion from Crystal City Metro Station to Pentagon City Metro Station	\$25,336,000	2026	BRT Expansion	<input checked="" type="checkbox"/>		<input checked="" type="checkbox"/>	<input checked="" type="checkbox"/>	<input checked="" type="checkbox"/>	<input checked="" type="checkbox"/>	<input checked="" type="checkbox"/>	<input checked="" type="checkbox"/>
DASH Service Expansion throughout the City of Alexandria	\$36,000,000	2030	Bus Expansion/Service Improvements								
Duke Street Transitway New Bus Lane from King Street Metro to Fairfax County Line	\$87,000,000	2028	New Bus Lane Expansion	<input checked="" type="checkbox"/>		<input checked="" type="checkbox"/>	<input checked="" type="checkbox"/>		<input checked="" type="checkbox"/>	<input checked="" type="checkbox"/>	
Franconia to Occoquan Passenger Rail Track Expansion	\$555,000,000	2028	Rail Expansion			<input checked="" type="checkbox"/>	<input checked="" type="checkbox"/>		<input checked="" type="checkbox"/>		<input checked="" type="checkbox"/>
Fredericksburg and Manassas VRE Lines Service Improvements	\$1,500,797,857	2035	Rail Service Improvements			<input checked="" type="checkbox"/>	<input checked="" type="checkbox"/>	<input checked="" type="checkbox"/>	<input checked="" type="checkbox"/>		<input checked="" type="checkbox"/>
I-66 Multimodal Improvements (Inside the Beltway)	Not currently available	2050	Managed lanes/HOV	<input checked="" type="checkbox"/>	<input checked="" type="checkbox"/>	<input checked="" type="checkbox"/>	<input checked="" type="checkbox"/>			<input checked="" type="checkbox"/>	<input checked="" type="checkbox"/>
Landmark Transit Center New BRT at Duke Street and Van Dorn Street	\$12,997,000	2027	New Transit Center	<input checked="" type="checkbox"/>		<input checked="" type="checkbox"/>	<input checked="" type="checkbox"/>		<input checked="" type="checkbox"/>		

VISUALIZE 2050

National Capital Region Transportation Plan

March 1-30, 2024, Public Comment Opportunity

Supplementary Material to Explain Draft Regionally Significant for Air Quality Projects (to be completed in 2026 or later)
for Inclusion in Air Quality Analysis of Visualize 2050 and the FY 2026-2029 Transportation Improvement Program as Provided by TPB Member Agencies

TPB Project Title	Cost	Completion Year	Project Type	Safety	Maintenance	Reliability	Affordable and Convenient	Efficient System Operations	Environmental Protection	Resilient Region	Livable and Prosperous Communities
New Long Bridge over the Potomac River	\$220,000,000	2030	New Bridge/rail		<input checked="" type="checkbox"/>	<input checked="" type="checkbox"/>	<input checked="" type="checkbox"/>				<input checked="" type="checkbox"/>
New Potomac Shores Commuter Rail Station	\$26,559,000	2030	New Transit Station			<input checked="" type="checkbox"/>	<input checked="" type="checkbox"/>				
US 1 New BRT from Ft. Belvoir to Huntington Metro Station	\$544,800,000	2031	New BRT Expansion	<input checked="" type="checkbox"/>		<input checked="" type="checkbox"/>	<input checked="" type="checkbox"/>		<input checked="" type="checkbox"/>		<input checked="" type="checkbox"/>
US 1 Metroway Enhancements: Glebe Road to Evans Lane	\$15,000,000	2030	New BRT Expansion								
VRE L'Enfant Station and Fourth Track Improvements	\$114,732,939	2028	Rail Service Improvements	<input checked="" type="checkbox"/>	<input checked="" type="checkbox"/>	<input checked="" type="checkbox"/>	<input checked="" type="checkbox"/>	<input checked="" type="checkbox"/>	<input checked="" type="checkbox"/>	<input checked="" type="checkbox"/>	<input checked="" type="checkbox"/>
West End Transit Way New BRT from Van Dorn Street Metro Station to Pentagon Metro Station	\$420,000,000	2028	New BRT Expansion	<input checked="" type="checkbox"/>	<input checked="" type="checkbox"/>	<input checked="" type="checkbox"/>	<input checked="" type="checkbox"/>	<input checked="" type="checkbox"/>		<input checked="" type="checkbox"/>	<input checked="" type="checkbox"/>

VISUALIZE 2050

National Capital Region Transportation Plan

March 1-30, 2024, Public Comment Opportunity

Supplementary Material to Explain Draft Regionally Significant for Air Quality Projects (to be completed in 2026 or later)
for Inclusion in Air Quality Analysis of Visualize 2050 and the FY 2026-2029 Transportation Improvement Program as Provided by TPB Member Agencies

Maryland Department of Transportation Projects on Interstate, Primary, or Secondary Roads

TPB Project Title	Cost	Completion Year	Project Type	Safety	Maintenance	Reliability	Affordable and Convenient	Efficient System Operations	Environmental Protection	Resilient Region	Livable and Prosperous Communities
Annapolis Road (MD 450) Widening: Stonybrook Drive to west of Crain Highway (MD 3)	\$40,800,000	2035	Roadway Widening		<input checked="" type="checkbox"/>	<input checked="" type="checkbox"/>	<input checked="" type="checkbox"/>				
Branch Avenue (MD 5) Widening: US 301 (North Junction) to North of I-95/I-495	\$769,000,000	2035	Roadway Widening	<input checked="" type="checkbox"/>		<input checked="" type="checkbox"/>	<input checked="" type="checkbox"/>				<input checked="" type="checkbox"/>
Buckeystown Pike (MD 85) Widening: English Muffin Way to North of Grove Road	\$80,400,000	2035	Roadway Widening		<input checked="" type="checkbox"/>					<input checked="" type="checkbox"/>	
Clopper Road (MD 117) from west of Game Preserve Road to I-270 Interchange Improvements	\$78,600,000	2030/2035	Intersection/ Interchange/ Ramp Improvements	<input checked="" type="checkbox"/>		<input checked="" type="checkbox"/>	<input checked="" type="checkbox"/>	<input checked="" type="checkbox"/>			<input checked="" type="checkbox"/>
Frederick Freeway (US 15) Grade Separation at Biggs Ford Road and Widening: North of Biggs Ford Road to I-270	\$140,000,000	2030/2040	Grade Separation and Roadway Widening	<input checked="" type="checkbox"/>	<input checked="" type="checkbox"/>	<input checked="" type="checkbox"/>	<input checked="" type="checkbox"/>	<input checked="" type="checkbox"/>	<input checked="" type="checkbox"/>	<input checked="" type="checkbox"/>	<input checked="" type="checkbox"/>
Georgia Avenue (MD 97) Widening: MD 390 to MD 192/Forest Glen Road	\$50,233,000	2030	Roadway Widening	<input checked="" type="checkbox"/>	<input checked="" type="checkbox"/>	<input checked="" type="checkbox"/>	<input checked="" type="checkbox"/>		<input checked="" type="checkbox"/>		<input checked="" type="checkbox"/>
I-495/I-270Y (West Spur) Express Toll Lanes Widening: I-270 to George Washington Memorial Parkway	\$3,703,510,000	2035	HOV/HOT Lanes		<input checked="" type="checkbox"/>						<input checked="" type="checkbox"/>
I-270 Express Toll Lanes Widening: I-270 Spur to I-370	\$2,092,000,000	2030	HOV/HOT Lanes	<input checked="" type="checkbox"/>	<input checked="" type="checkbox"/>	<input checked="" type="checkbox"/>	<input checked="" type="checkbox"/>			<input checked="" type="checkbox"/>	<input checked="" type="checkbox"/>
I-70 Widening: Mt. Phillips Road to west of I-270	\$124,500,000	2035	Roadway Widening	<input checked="" type="checkbox"/>	<input checked="" type="checkbox"/>	<input checked="" type="checkbox"/>	<input checked="" type="checkbox"/>	<input checked="" type="checkbox"/>		<input checked="" type="checkbox"/>	<input checked="" type="checkbox"/>

VISUALIZE 2050

National Capital Region Transportation Plan

March 1-30, 2024, Public Comment Opportunity

Supplementary Material to Explain Draft Regionally Significant for Air Quality Projects (to be completed in 2026 or later)
for Inclusion in Air Quality Analysis of Visualize 2050 and the FY 2026-2029 Transportation Improvement Program as Provided by TPB Member Agencies

TPB Project Title	Cost	Completion Year	Project Type	Safety	Maintenance	Reliability	Affordable and Convenient	Efficient System Operations	Environmental Protection	Resilient Region	Livable and Prosperous Communities
I-95/I-495 at Greenbelt Metro Station Interchange Improvements	\$263,959,000	2030	Intersection/ Interchange/ Ramp Improvements			<input checked="" type="checkbox"/>	<input checked="" type="checkbox"/>		<input checked="" type="checkbox"/>		<input checked="" type="checkbox"/>
Indian Head Highway (MD 210) at I-95/I-495 and MD 228 Interchange Improvements	\$15,520,000	2040	Intersection/ Interchange/ Ramp Improvements	<input checked="" type="checkbox"/>		<input checked="" type="checkbox"/>	<input checked="" type="checkbox"/>	<input checked="" type="checkbox"/>			<input checked="" type="checkbox"/>
Landover Road (MD 202) at Brightseat Road Intersection Improvements	\$20,400,000	2045	Intersection/ Interchange/ Ramp Improvements	<input checked="" type="checkbox"/>		<input checked="" type="checkbox"/>	<input checked="" type="checkbox"/>				<input checked="" type="checkbox"/>
Norbeck Road (MD 28) Widening: Georgia Avenue (MD 97) to Layhill Road (MD 182)	\$300,000,000	2045	Roadway Widening	<input checked="" type="checkbox"/>	<input checked="" type="checkbox"/>	<input checked="" type="checkbox"/>	<input checked="" type="checkbox"/>			<input checked="" type="checkbox"/>	
Pennsylvania Avenue (MD 4) Widening: I-95/I-495 to Woodyard Road (MD 223)	\$502,000,000	2040	Roadway Widening	<input checked="" type="checkbox"/>		<input checked="" type="checkbox"/>	<input checked="" type="checkbox"/>	<input checked="" type="checkbox"/>			<input checked="" type="checkbox"/>
Randolph Road/Montrose Parkway Grade Separation from Rockville Pike (MD 355) to east of Parklawn Drive	\$11,341,000	2045	Grade Separation	<input checked="" type="checkbox"/>	<input checked="" type="checkbox"/>	<input checked="" type="checkbox"/>	<input checked="" type="checkbox"/>			<input checked="" type="checkbox"/>	
Solomons Island Road (MD 2/4) Widening: north of Stoakley Road/Hospital Road to south of MD 765A just south of Parkers Creek	\$146,400,000	2045	Roadway Widening		<input checked="" type="checkbox"/>	<input checked="" type="checkbox"/>	<input checked="" type="checkbox"/>				<input checked="" type="checkbox"/>
US 301 Reconstruction: Mt. Oak Road to I-595/US 50	\$485,900,000	2035	Reconstruction	<input checked="" type="checkbox"/>		<input checked="" type="checkbox"/>	<input checked="" type="checkbox"/>				<input checked="" type="checkbox"/>

VISUALIZE 2050

National Capital Region Transportation Plan

March 1-30, 2024, Public Comment Opportunity

Supplementary Material to Explain Draft Regionally Significant for Air Quality Projects (to be completed in 2026 or later)
for Inclusion in Air Quality Analysis of Visualize 2050 and the FY 2026-2029 Transportation Improvement Program as Provided by TPB Member Agencies

Maryland Secondary Road System Projects

TPB Project Title	Cost	Completion Year	Project Type	Safety	Maintenance	Reliability	Affordable and Convenient	Efficient System Operations	Environmental Protection	Resilient Region	Livable and Prosperous Communities
Goshen Road South Widening: South of Girard Street to 1,000 ft north of Warfield Road	\$8,000,000	2040	Roadway Widening	<input checked="" type="checkbox"/>		<input checked="" type="checkbox"/>	<input checked="" type="checkbox"/>	<input checked="" type="checkbox"/>	<input checked="" type="checkbox"/>	<input checked="" type="checkbox"/>	<input checked="" type="checkbox"/>
Little Seneca Parkway Widening: Frederick Road (MD 355) to Observation Drive	\$123,608,000	2035	Roadway Widening	<input checked="" type="checkbox"/>	<input checked="" type="checkbox"/>	<input checked="" type="checkbox"/>	<input checked="" type="checkbox"/>	<input checked="" type="checkbox"/>	<input checked="" type="checkbox"/>	<input checked="" type="checkbox"/>	<input checked="" type="checkbox"/>
New Dorsey Mill Road Bridge over I-270 from Century Boulevard to Milestone Center Drive	\$33,395,000	2040	New Bridge	<input checked="" type="checkbox"/>		<input checked="" type="checkbox"/>	<input checked="" type="checkbox"/>			<input checked="" type="checkbox"/>	<input checked="" type="checkbox"/>
Observation Drive Extension: Waters Discovery Lane to Stringtown Road	\$123,608,000	2035/ 2045	Extension	<input checked="" type="checkbox"/>	<input checked="" type="checkbox"/>	<input checked="" type="checkbox"/>	<input checked="" type="checkbox"/>	<input checked="" type="checkbox"/>	<input checked="" type="checkbox"/>	<input checked="" type="checkbox"/>	<input checked="" type="checkbox"/>
Old Georgetown Road (MD 187) Extension: Georgetown Road (MD 187) to Nicholson Lane/Tilden Lane	\$133,784,000	2030	Extension	<input checked="" type="checkbox"/>	<input checked="" type="checkbox"/>	<input checked="" type="checkbox"/>	<input checked="" type="checkbox"/>	<input checked="" type="checkbox"/>	<input checked="" type="checkbox"/>	<input checked="" type="checkbox"/>	<input checked="" type="checkbox"/>
Collington Road (MD 197) Widening: Kenhill Drive to Annapolis Road (MD 450)	\$50,000,000	2030	Roadway Widening	<input checked="" type="checkbox"/>	<input checked="" type="checkbox"/>	<input checked="" type="checkbox"/>	<input checked="" type="checkbox"/>	<input checked="" type="checkbox"/>	<input checked="" type="checkbox"/>	<input checked="" type="checkbox"/>	<input checked="" type="checkbox"/>

VISUALIZE 2050

National Capital Region Transportation Plan

March 1-30, 2024, Public Comment Opportunity

Supplementary Material to Explain Draft Regionally Significant for Air Quality Projects (to be completed in 2026 or later)
for Inclusion in Air Quality Analysis of Visualize 2050 and the FY 2026-2029 Transportation Improvement Program as Provided by TPB Member Agencies

District of Columbia Roadway Projects

TPB Project Title	Cost	Completion Year	Project Type	Safety	Maintenance	Reliability	Affordable and Convenient	Efficient System Operations	Environmental Protection	Resilient Region	Livable and Prosperous Communities
6th Street NW Capacity Reduction for New Bicycle Accommodations: Florida Avenue NW to Constitution Avenue NW	\$6,680,000	2030	Capacity Reduction	<input checked="" type="checkbox"/>		<input checked="" type="checkbox"/>	<input checked="" type="checkbox"/>				<input checked="" type="checkbox"/>
Alabama Avenue SE Capacity Reduction for Additional Pedestrian and Bicycle Accommodations: Bowen Road SE to Martin Luther King Jr Elementary School	\$33,753,265	2030	Capacity Reduction	<input checked="" type="checkbox"/>	<input checked="" type="checkbox"/>						
Bladensburg Road NE Capacity Reduction for New Bicycle Accommodations: Eastern Avenue to Benning Road	\$26,908,000	2028	Capacity Reduction		<input checked="" type="checkbox"/>	<input checked="" type="checkbox"/>	<input checked="" type="checkbox"/>				<input checked="" type="checkbox"/>
Constitution Avenue Capacity Reduction for New Bicycle Accommodations: Louisiana Avenue NW to Pennsylvania Avenue NW	\$35,535,670	2026	Capacity Reduction	<input checked="" type="checkbox"/>		<input checked="" type="checkbox"/>	<input checked="" type="checkbox"/>				<input checked="" type="checkbox"/>
Dalecarlia Parkway NW Capacity Reduction for New Bicycle Accommodations: Loughboro Road to Westmoreland Circle	Part of DC-wide \$6,680,000 program	2030	Capacity Reduction	<input checked="" type="checkbox"/>		<input checked="" type="checkbox"/>	<input checked="" type="checkbox"/>				<input checked="" type="checkbox"/>
East Capitol Street Capacity Reduction for New Bicycle and Pedestrian Accommodations: 40th Street SE to Southern Avenue	\$61,907,725	2030	Capacity Reduction	<input checked="" type="checkbox"/>	<input checked="" type="checkbox"/>	<input checked="" type="checkbox"/>	<input checked="" type="checkbox"/>				
Eastern Avenue NE Capacity Reduction for New Bicycle Accommodations: Whittier Street NW to New Hampshire Avenue NE	\$139,753	2028	Capacity Reduction			<input checked="" type="checkbox"/>	<input checked="" type="checkbox"/>				

VISUALIZE 2050

National Capital Region Transportation Plan

March 1-30, 2024, Public Comment Opportunity

Supplementary Material to Explain Draft Regionally Significant for Air Quality Projects (to be completed in 2026 or later)
for Inclusion in Air Quality Analysis of Visualize 2050 and the FY 2026-2029 Transportation Improvement Program as Provided by TPB Member Agencies

TPB Project Title	Cost	Completion Year	Project Type	Safety	Maintenance	Reliability	Affordable and Convenient	Efficient System Operations	Environmental Protection	Resilient Region	Livable and Prosperous Communities
Georgia Avenue NW Capacity Reduction for New Bus Lanes: Eastern Avenue to Barry Place NW	\$7,725,000	2026	Capacity Reduction			<input checked="" type="checkbox"/>	<input checked="" type="checkbox"/>				
Louisiana Avenue NW Capacity Reduction for New Bicycle Accommodations: Columbus Circle NE to Constitution Avenue NW	Part of DC-wide program \$6,680,000	2026	Capacity Reduction	<input checked="" type="checkbox"/>		<input checked="" type="checkbox"/>	<input checked="" type="checkbox"/>				<input checked="" type="checkbox"/>
Maryland Avenue NE Capacity Reduction for New Bicycle/Pedestrian Accommodations: Bladensburg Road NE to Neal Street NE	Not currently available	2028	Capacity Reduction		<input checked="" type="checkbox"/>	<input checked="" type="checkbox"/>	<input checked="" type="checkbox"/>				<input checked="" type="checkbox"/>
Missouri Avenue NW (Eastbound) Capacity Reduction for New Bicycle Accommodations: 17th Street NW to 16th Street NW	Part of DC-wide program \$6,680,000	2030	Capacity Reduction	<input checked="" type="checkbox"/>		<input checked="" type="checkbox"/>	<input checked="" type="checkbox"/>				<input checked="" type="checkbox"/>
MLK Jr. Avenue SE Capacity Reduction for Additional Pedestrian Accommodations: South Capitol Street SE to Upsal Street SE	\$8,550,526	2027	Capacity Reduction		<input checked="" type="checkbox"/>	<input checked="" type="checkbox"/>	<input checked="" type="checkbox"/>				
M Street NE Capacity Reduction for New Bicycle Accommodations: 1st Street NE to 1st Street NW	Part of DC-wide program \$6,680,000	2026	Capacity Reduction	<input checked="" type="checkbox"/>		<input checked="" type="checkbox"/>	<input checked="" type="checkbox"/>				<input checked="" type="checkbox"/>
Nebraska Avenue NW Capacity Reduction for New Bicycle Accommodations: New Mexico Avenue to Loughboro Road	Part of DC-wide program \$6,680,000	2030	Capacity Reduction	<input checked="" type="checkbox"/>		<input checked="" type="checkbox"/>	<input checked="" type="checkbox"/>				<input checked="" type="checkbox"/>

VISUALIZE 2050

National Capital Region Transportation Plan

March 1-30, 2024, Public Comment Opportunity

Supplementary Material to Explain Draft Regionally Significant for Air Quality Projects (to be completed in 2026 or later)
for Inclusion in Air Quality Analysis of Visualize 2050 and the FY 2026-2029 Transportation Improvement Program as Provided by TPB Member Agencies

TPB Project Title	Cost	Completion Year	Project Type	Safety	Maintenance	Reliability	Affordable and Convenient	Efficient System Operations	Environmental Protection	Resilient Region	Livable and Prosperous Communities
Pennsylvania Avenue NW Capacity Reduction for New Bicycle Accommodations: 17th Street NW to 29th Street NW	\$40,913,500	2040	Capacity Reduction	<input checked="" type="checkbox"/>		<input checked="" type="checkbox"/>	<input checked="" type="checkbox"/>				<input checked="" type="checkbox"/>
Southern Avenue SE Northbound Capacity Reduction for New Bus/Bike Lane: South Capitol Street SE to Barnaby Road SE	\$15,350,000	2026	Capacity Reduction	<input checked="" type="checkbox"/>							
Wheeler Road SE Capacity Reduction for Additional Pedestrian Accommodations: Alabama Avenue to Southern Avenue	\$26,518,075	2027	Capacity Reduction	<input checked="" type="checkbox"/>		<input checked="" type="checkbox"/>	<input checked="" type="checkbox"/>				

VISUALIZE 2050

National Capital Region Transportation Plan

March 1-30, 2024, Public Comment Opportunity

Supplementary Material to Explain Draft Regionally Significant for Air Quality Projects (to be completed in 2026 or later)
for Inclusion in Air Quality Analysis of Visualize 2050 and the FY 2026-2029 Transportation Improvement Program as Provided by TPB Member Agencies

Virginia Department of Transportation Projects on Federal Lands, Interstate, Primary, and Urban System Roads

TPB Project Title	Cost	Completion Year	Project Type	Safety	Maintenance	Reliability	Affordable and Convenient	Efficient System Operations	Environmental Protection	Resilient Region	Livable and Prosperous Communities
Belmont Ridge Road (VA 659) Widening: Leesburg Pike (VA 7) to Arcola Mills Drive (VA 659)	\$43,000,000	2040	Roadway Widening	<input checked="" type="checkbox"/>		<input checked="" type="checkbox"/>	<input checked="" type="checkbox"/>	<input checked="" type="checkbox"/>	<input checked="" type="checkbox"/>		
Billy Pierce Memorial Pike (VA 7) at Hillsboro Road (VA 690) Interchange Improvements	\$52,851,578	2027	Intersection/Interchange/Ramp Improvements	<input checked="" type="checkbox"/>	<input checked="" type="checkbox"/>	<input checked="" type="checkbox"/>	<input checked="" type="checkbox"/>	<input checked="" type="checkbox"/>	<input checked="" type="checkbox"/>	<input checked="" type="checkbox"/>	<input checked="" type="checkbox"/>
Chain Bridge Road (VA 123) Widening: Old Courthouse Road (VA 677) to Great Falls Street (VA 634)	\$23,150,000	2040	Roadway Widening	<input checked="" type="checkbox"/>	<input checked="" type="checkbox"/>	<input checked="" type="checkbox"/>	<input checked="" type="checkbox"/>	<input checked="" type="checkbox"/>	<input checked="" type="checkbox"/>	<input checked="" type="checkbox"/>	<input checked="" type="checkbox"/>
Dulles Airport Access Road Widening: Dulles Airport to I-495	\$400,000,000	2040	Roadway Widening			<input checked="" type="checkbox"/>	<input checked="" type="checkbox"/>				<input checked="" type="checkbox"/>
Dulles Toll Road (VA 267) Ramp Construction: New Boone Boulevard Extension at Ashgrove and Greensboro Drive at Tyco Road	Not currently available	2040	Intersection/Interchange/Ramp Improvements	<input checked="" type="checkbox"/>		<input checked="" type="checkbox"/>	<input checked="" type="checkbox"/>	<input checked="" type="checkbox"/>			<input checked="" type="checkbox"/>
Dulles Toll Road (VA 267) Ramp Widening: SB I-495 off Ramp 19A to Scotts Run Crossing	Not currently available	2029	Intersection/Interchange/Ramp Improvements	<input checked="" type="checkbox"/>		<input checked="" type="checkbox"/>	<input checked="" type="checkbox"/>	<input checked="" type="checkbox"/>			<input checked="" type="checkbox"/>
Dulles Toll Road Collector-Distributor Extension: Spring Hill Road to Leesburg Pike (VA 7)	Not currently available	2036/ 2037/ 2040	Extension								
East Elden Street (VA 606) Widening: Monroe Street to Fairfax County Parkway (VA 286)	\$119,500,000	2029	Roadway Widening	<input checked="" type="checkbox"/>	<input checked="" type="checkbox"/>	<input checked="" type="checkbox"/>	<input checked="" type="checkbox"/>	<input checked="" type="checkbox"/>	<input checked="" type="checkbox"/>	<input checked="" type="checkbox"/>	<input checked="" type="checkbox"/>

VISUALIZE 2050

National Capital Region Transportation Plan

March 1-30, 2024, Public Comment Opportunity

Supplementary Material to Explain Draft Regionally Significant for Air Quality Projects (to be completed in 2026 or later)
for Inclusion in Air Quality Analysis of Visualize 2050 and the FY 2026-2029 Transportation Improvement Program as Provided by TPB Member Agencies

TPB Project Title	Cost	Completion Year	Project Type	Safety	Maintenance	Reliability	Affordable and Convenient	Efficient System Operations	Environmental Protection	Resilient Region	Livable and Prosperous Communities
Euclid Avenue Extension: Manassas Park High School to Centreville Road (VA 28)	Not currently available	2040	Extension	<input checked="" type="checkbox"/>		<input checked="" type="checkbox"/>	<input checked="" type="checkbox"/>	<input checked="" type="checkbox"/>	<input checked="" type="checkbox"/>		<input checked="" type="checkbox"/>
Fairfax County Parkway (VA 286) Widening: Ox Road (VA 123) to Lee Highway (US 29)	\$239,670,546	2027/2028	Roadway Widening	<input checked="" type="checkbox"/>	<input checked="" type="checkbox"/>	<input checked="" type="checkbox"/>	<input checked="" type="checkbox"/>		<input checked="" type="checkbox"/>	<input checked="" type="checkbox"/>	<input checked="" type="checkbox"/>
Fairfax County Parkway (VA 286) Widening: Rugby Road to Sunrise Valley Drive	\$312,000,000	2045	Roadway Widening	<input checked="" type="checkbox"/>		<input checked="" type="checkbox"/>	<input checked="" type="checkbox"/>		<input checked="" type="checkbox"/>		<input checked="" type="checkbox"/>
Fairfax County Parkway (VA 286) Widening: Sydenstricker Road (VA 640) to Ox Road (VA 123)	\$364,000,000	2045	Roadway Widening								
Farrington Avenue Extension: Van Dorn Street/Eisenhower Avenue to Edsall Road	\$87,000,000	2034	Extension	<input checked="" type="checkbox"/>	<input checked="" type="checkbox"/>	<input checked="" type="checkbox"/>	<input checked="" type="checkbox"/>	<input checked="" type="checkbox"/>		<input checked="" type="checkbox"/>	<input checked="" type="checkbox"/>
I-495 Auxiliary Lanes: north of Hemming Avenue underpass to Georgetown Pike (VA 193)	\$3,235,000	2030	HOV/HOT Lanes								
I-495 Express Toll Lanes Northern Extension (NEXT): South of Old Dominion Drive to American Legion Bridge	\$559,323,951	2026	HOV/HOT Lanes								
I-495 Express Toll Lane Ramps: at Dulles Connector Road and Dulles Toll Road	Not currently available	2045	Intersection/ Interchange/ Ramp Improvements								
I-495 Express Lanes Truck Access: American Legion Bridge to I-95/I-395 Interchange	Not currently available	2030	HOV/HOT Lanes			<input checked="" type="checkbox"/>	<input checked="" type="checkbox"/>		<input checked="" type="checkbox"/>		<input checked="" type="checkbox"/>
I-95 New Bi-Directional Operation Express Toll Lanes with Widening: Turkeycock Run to Optiz Boulevard	Not currently available	2030	HOV/HOT Lanes			<input checked="" type="checkbox"/>	<input checked="" type="checkbox"/>	<input checked="" type="checkbox"/>	<input checked="" type="checkbox"/>		<input checked="" type="checkbox"/>
I-495 Southside Express Toll Lanes (SEL): Springfield Interchange to MD 210	\$1,400,000,000	2031	HOV/HOT Lanes			<input checked="" type="checkbox"/>	<input checked="" type="checkbox"/>	<input checked="" type="checkbox"/>			<input checked="" type="checkbox"/>

VISUALIZE 2050

National Capital Region Transportation Plan

March 1-30, 2024, Public Comment Opportunity

Supplementary Material to Explain Draft Regionally Significant for Air Quality Projects (to be completed in 2026 or later)
for Inclusion in Air Quality Analysis of Visualize 2050 and the FY 2026-2029 Transportation Improvement Program as Provided by TPB Member Agencies

TPB Project Title	Cost	Completion Year	Project Type	Safety	Maintenance	Reliability	Affordable and Convenient	Efficient System Operations	Environmental Protection	Resilient Region	Livable and Prosperous Communities
I-95 Express Lanes Truck Access: I-95 Springfield Interchange to I-95/Route 17 Interchange	Not currently available	2030	HOV/HOT Lanes			<input checked="" type="checkbox"/>	<input checked="" type="checkbox"/>		<input checked="" type="checkbox"/>		<input checked="" type="checkbox"/>
James Madison Highway (US 15) Overpass Widening: 1000 ft North of Railroad Tracks to Lee Highway (US 29)	\$102,740,000	2030/2040	Roadway Widening			<input checked="" type="checkbox"/>	<input checked="" type="checkbox"/>				
Lee Highway (US 29) Widening: John Marshall Highway (US 55) to Pageland Lane	\$80,000,000	2048	Roadway Widening	<input checked="" type="checkbox"/>		<input checked="" type="checkbox"/>	<input checked="" type="checkbox"/>				<input checked="" type="checkbox"/>
Leesburg Pike (VA 7) Widening: Chain Bridge Road (VA 123) to I-495	\$78,500,000	2030	Roadway Widening	<input checked="" type="checkbox"/>	<input checked="" type="checkbox"/>	<input checked="" type="checkbox"/>	<input checked="" type="checkbox"/>	<input checked="" type="checkbox"/>	<input checked="" type="checkbox"/>	<input checked="" type="checkbox"/>	<input checked="" type="checkbox"/>
Leesburg Pike Bypass (VA 7 Bypass) Widening: Dulles Greenway (VA 267) to East Market Street (VA 7/US 15)	\$70,000,000	2030/2040	Roadway Widening	<input checked="" type="checkbox"/>		<input checked="" type="checkbox"/>	<input checked="" type="checkbox"/>	<input checked="" type="checkbox"/>	<input checked="" type="checkbox"/>		<input checked="" type="checkbox"/>
Leesburg Pike (VA 7) Widening: Route 9 to West Market Street	\$160,000,001	2030	Roadway Widening	<input checked="" type="checkbox"/>	<input checked="" type="checkbox"/>	<input checked="" type="checkbox"/>	<input checked="" type="checkbox"/>	<input checked="" type="checkbox"/>		<input checked="" type="checkbox"/>	<input checked="" type="checkbox"/>
Leesburg Pike (VA 7) Widening: Seven Corners to Bailey's Crossroads	\$445,000,000	2040	Roadway Widening			<input checked="" type="checkbox"/>	<input checked="" type="checkbox"/>	<input checked="" type="checkbox"/>	<input checked="" type="checkbox"/>	<input checked="" type="checkbox"/>	<input checked="" type="checkbox"/>
Lee Highway (US 29) Widening: Union Mill Road (VA 659) to Buckleys Gate Drive	\$95,679,564	2027	Roadway Widening	<input checked="" type="checkbox"/>	<input checked="" type="checkbox"/>	<input checked="" type="checkbox"/>	<input checked="" type="checkbox"/>	<input checked="" type="checkbox"/>		<input checked="" type="checkbox"/>	<input checked="" type="checkbox"/>
New Manassas Bypass (VA 28): Sudley Road (VA 234) to Centreville Road (VA 28)	\$92,392,491	2029	New Roadway Construction								
Manassas National Battlefield Park Bypass Extension Roadway Closure (US 29) from Pageland Lane to Paddington Lane and Sudley Road (VA 234) from Battlevue Parkway to Featherbed Lane Road Closures	\$28,509,000 – Connected to project below	2040	Roadway Closure for Extension								<input checked="" type="checkbox"/>

VISUALIZE 2050

National Capital Region Transportation Plan

March 1-30, 2024, Public Comment Opportunity

Supplementary Material to Explain Draft Regionally Significant for Air Quality Projects (to be completed in 2026 or later)
for Inclusion in Air Quality Analysis of Visualize 2050 and the FY 2026-2029 Transportation Improvement Program as Provided by TPB Member Agencies

TPB Project Title	Cost	Completion Year	Project Type	Safety	Maintenance	Reliability	Affordable and Convenient	Efficient System Operations	Environmental Protection	Resilient Region	Livable and Prosperous Communities
Manassas National Battlefield Park Bypass Extension: US 29 at Pageland Lane to Bull Run Drive	\$28,509,000 – Connected to project above	2040	Extension								<input checked="" type="checkbox"/>
Nokesville Road (VA 28) Widening: Fauquier County Line to Fitzwater Drive (VA 652)	\$70,900,000	2045	Roadway Widening			<input checked="" type="checkbox"/>	<input checked="" type="checkbox"/>				<input checked="" type="checkbox"/>
Ox Road (VA 123) Widening: US 1 to the Occoquan River	\$175,000,000	2045	Roadway Widening								
Ox Road (VA 123) Widening: Weatherly Way to Fairfax County Parkway (VA 286)	\$983,600,000	2045	Roadway Widening			<input checked="" type="checkbox"/>	<input checked="" type="checkbox"/>	<input checked="" type="checkbox"/>	<input checked="" type="checkbox"/>	<input checked="" type="checkbox"/>	<input checked="" type="checkbox"/>
Prince William County Parkway (VA 294) Widening: Liberia Avenue (VA 776) to Hoadly Road (VA 642)	\$60,000,000	2040	Roadway Widening	<input checked="" type="checkbox"/>		<input checked="" type="checkbox"/>	<input checked="" type="checkbox"/>				<input checked="" type="checkbox"/>
South Street Extension: University Drive to Chain Bridge Road	\$23,833,000	2029	Extension	<input checked="" type="checkbox"/>		<input checked="" type="checkbox"/>	<input checked="" type="checkbox"/>				
Tall Cedars Parkway Extension: US 50 to Air and Space Museum Parkway/VA 28	\$247,568,000	2033	Extension								
University Boulevard Widening: Wellington Road to Devlin Road	\$179,605,000	2035	Roadway Widening		<input checked="" type="checkbox"/>	<input checked="" type="checkbox"/>	<input checked="" type="checkbox"/>		<input checked="" type="checkbox"/>		<input checked="" type="checkbox"/>
US 1 Widening: Annapolis Way to Telegraph Road	\$675,500,000	2045	Roadway Widening	<input checked="" type="checkbox"/>		<input checked="" type="checkbox"/>	<input checked="" type="checkbox"/>	<input checked="" type="checkbox"/>		<input checked="" type="checkbox"/>	<input checked="" type="checkbox"/>
US 1 Widening: Dumfries Road (VA 234) to Cardinal Drive	\$127,000,000	2050	Roadway Widening								
US 1 Widening: Sherwood Hall Lane (VA 626) to Mt. Vernon Memorial Highway	\$468,692,429	2028	Roadway Widening		<input checked="" type="checkbox"/>	<input checked="" type="checkbox"/>	<input checked="" type="checkbox"/>		<input checked="" type="checkbox"/>	<input checked="" type="checkbox"/>	<input checked="" type="checkbox"/>
US 1 Widening: Stafford County Line to Dumfries Road (VA 234)	\$212,484,558	2030/2040	Roadway Widening	<input checked="" type="checkbox"/>	<input checked="" type="checkbox"/>	<input checked="" type="checkbox"/>	<input checked="" type="checkbox"/>				<input checked="" type="checkbox"/>

VISUALIZE 2050

National Capital Region Transportation Plan

March 1-30, 2024, Public Comment Opportunity

Supplementary Material to Explain Draft Regionally Significant for Air Quality Projects (to be completed in 2026 or later)
for Inclusion in Air Quality Analysis of Visualize 2050 and the FY 2026-2029 Transportation Improvement Program as Provided by TPB Member Agencies

TPB Project Title	Cost	Completion Year	Project Type	Safety	Maintenance	Reliability	Affordable and Convenient	Efficient System Operations	Environmental Protection	Resilient Region	Livable and Prosperous Communities
US 15 Widening: Montresor Road (VA 661) to Battlefield Parkway	\$100,000,000	2027/2029	Roadway Widening	<input checked="" type="checkbox"/>	<input checked="" type="checkbox"/>	<input checked="" type="checkbox"/>	<input checked="" type="checkbox"/>	<input checked="" type="checkbox"/>	<input checked="" type="checkbox"/>		<input checked="" type="checkbox"/>
US 50 Widening: Eastern City Limit of Fairfax to Arlington County Line	\$450,000,000	2040	Roadway Widening	<input checked="" type="checkbox"/>	<input checked="" type="checkbox"/>	<input checked="" type="checkbox"/>	<input checked="" type="checkbox"/>	<input checked="" type="checkbox"/>	<input checked="" type="checkbox"/>	<input checked="" type="checkbox"/>	<input checked="" type="checkbox"/>
Washington Street (VA 55) Widening: Lee Highway (US 29) to Fayette Street	\$70,000,000	2028	Roadway Widening			<input checked="" type="checkbox"/>	<input checked="" type="checkbox"/>				

VISUALIZE 2050

National Capital Region Transportation Plan

March 1-30, 2024, Public Comment Opportunity

Supplementary Material to Explain Draft Regionally Significant for Air Quality Projects (to be completed in 2026 or later)
for Inclusion in Air Quality Analysis of Visualize 2050 and the FY 2026-2029 Transportation Improvement Program as Provided by TPB Member Agencies

Virginia Secondary Road System Projects

TPB Project Title	Cost	Completion Year	Project Type	Safety	Maintenance	Reliability	Affordable and Convenient	Efficient System Operations	Environmental Protection	Resilient Region	Livable and Prosperous Communities
Arcola Mills Drive (formerly VA 621) Widening: Stone Springs Boulevard to Loudoun County Parkway	\$30,000,000	2050	Roadway Widening								
Boone Boulevard Extension: Chain Bridge Road (VA 123) to Ashgrove Lane	\$164,000,000	2045	Extension	☑		☑	☑	☑	☑	☑	☑
Braddock Road (VA 620) Widening: Fairfax County Parkway (VA 286) to Ox Road (VA 123)	\$16,710,000	2045	Roadway Widening	☑	☑	☑	☑	☑	☑	☑	☑
Braddock Road (VA 620) Widening: Gum Springs Road to Fairfax County Line	\$115,373,000	2030	Roadway Widening	☑	☑	☑	☑	☑		☑	☑
Catharpin Road (VA 676) Widening: Heathcote Boulevard to John Marshall Highway	\$50,000,000	2040	Roadway Widening	☑	☑	☑	☑				
Connor Drive Extension and Grade Separation: Euclid Avenue to Manassas Drive/Railroad Drive	\$32,087,425	2030	Extension and Grade Separation	☑	☑	☑	☑	☑	☑	☑	☑
Croson Lane (VA 645) Widening: Claiborne Parkway to Mooreview Parkway	\$26,577,000	2027	Roadway Widening		☑	☑	☑	☑		☑	
Crosstrail Boulevard Extension: Sycolin Road (VA 625) to Dulles Greenway (VA 267)	\$109,473,000	2028	Extension								
Devlin Road (VA 621) Widening: Linton Hall Road to Wellington Road	\$54,399,033	2028	Roadway Widening	☑	☑	☑	☑			☑	☑
Dulles West Boulevard Extension: Arcola Boulevard to Northstar Drive	\$72,235,000	2027	Extension	☑	☑	☑	☑	☑	☑	☑	☑
Fairbrook Drive Extension: Herndon Parkway to Spring Street	\$20,000,000	2035	Extension	☑	☑	☑	☑		☑	☑	☑

VISUALIZE 2050

National Capital Region Transportation Plan

March 1-30, 2024, Public Comment Opportunity

Supplementary Material to Explain Draft Regionally Significant for Air Quality Projects (to be completed in 2026 or later)
for Inclusion in Air Quality Analysis of Visualize 2050 and the FY 2026-2029 Transportation Improvement Program as Provided by TPB Member Agencies

TPB Project Title	Cost	Completion Year	Project Type	Safety	Maintenance	Reliability	Affordable and Convenient	Efficient System Operations	Environmental Protection	Resilient Region	Livable and Prosperous Communities
Frontier Drive (VA 2677) Extension: Franconia-Springfield Transportation Center to Loisdale Road (VA 789)	\$241,630,600	2032	Extension		<input checked="" type="checkbox"/>	<input checked="" type="checkbox"/>	<input checked="" type="checkbox"/>	<input checked="" type="checkbox"/>	<input checked="" type="checkbox"/>	<input checked="" type="checkbox"/>	<input checked="" type="checkbox"/>
Frying Pan Road (VA 608) Widening: Sulley Road (VA 288) to Centrevillow Road (VA 657)	\$54,300,000	2045	Roadway Widening	<input checked="" type="checkbox"/>		<input checked="" type="checkbox"/>	<input checked="" type="checkbox"/>	<input checked="" type="checkbox"/>	<input checked="" type="checkbox"/>		<input checked="" type="checkbox"/>
Graham Park Road Capacity Reduction for New Bicycle Accommodations: Old Triangle Road to Purvis Drive	\$35,000,000	2030	Capacity Reduction	<input checked="" type="checkbox"/>		<input checked="" type="checkbox"/>	<input checked="" type="checkbox"/>				
Greensboro Drive west Extension: Spring Hill Road to Tyco Road	\$80,000,000	2034	Extension	<input checked="" type="checkbox"/>		<input checked="" type="checkbox"/>	<input checked="" type="checkbox"/>	<input checked="" type="checkbox"/>	<input checked="" type="checkbox"/>	<input checked="" type="checkbox"/>	<input checked="" type="checkbox"/>
Hooes Road (VA 636) Widening: Fairfax County Parkway (VA 286) to Silverbrook Road (VA 600)	\$20,550,000	2035	Roadway Widening	<input checked="" type="checkbox"/>		<input checked="" type="checkbox"/>	<input checked="" type="checkbox"/>	<input checked="" type="checkbox"/>		<input checked="" type="checkbox"/>	<input checked="" type="checkbox"/>
Liberia Avenue Widening: VA 28 to Richmond Avenue	\$8,855,000	2027	Roadway Widening	<input checked="" type="checkbox"/>		<input checked="" type="checkbox"/>	<input checked="" type="checkbox"/>				
Lockridge Road West Extension: Prentice Drive to Waxpool Road	\$163,073,000	2030	Extension	<input checked="" type="checkbox"/>	<input checked="" type="checkbox"/>	<input checked="" type="checkbox"/>	<input checked="" type="checkbox"/>	<input checked="" type="checkbox"/>	<input checked="" type="checkbox"/>	<input checked="" type="checkbox"/>	<input checked="" type="checkbox"/>
New Seven Corners Ring Road (VA 7): Arlington Boulevard (US 50) to Leesburg Pike (VA 7)	\$132,691,000	2045	New Construction	<input checked="" type="checkbox"/>	<input checked="" type="checkbox"/>	<input checked="" type="checkbox"/>	<input checked="" type="checkbox"/>	<input checked="" type="checkbox"/>	<input checked="" type="checkbox"/>	<input checked="" type="checkbox"/>	<input checked="" type="checkbox"/>
North Fort Myer Drive Reconstruction: North Nash Street to north Fairfax Drive	\$41,000,000	2031	Reconstruction	<input checked="" type="checkbox"/>	<input checked="" type="checkbox"/>	<input checked="" type="checkbox"/>	<input checked="" type="checkbox"/>	<input checked="" type="checkbox"/>	<input checked="" type="checkbox"/>	<input checked="" type="checkbox"/>	<input checked="" type="checkbox"/>
Northstar Boulevard Widening: Tall Cedars Parkway to Braddock Road (VA 620)	\$54,880,000	2028	Roadway Widening			<input checked="" type="checkbox"/>	<input checked="" type="checkbox"/>	<input checked="" type="checkbox"/>			
Old Ox Road (VA 606) Widening: Shaw Road to Rock Hill Road	\$49,000,000	2045	Roadway Widening								<input checked="" type="checkbox"/>

VISUALIZE 2050

National Capital Region Transportation Plan

March 1-30, 2024, Public Comment Opportunity

Supplementary Material to Explain Draft Regionally Significant for Air Quality Projects (to be completed in 2026 or later)
for Inclusion in Air Quality Analysis of Visualize 2050 and the FY 2026-2029 Transportation Improvement Program as Provided by TPB Member Agencies

TPB Project Title	Cost	Completion Year	Project Type	Safety	Maintenance	Reliability	Affordable and Convenient	Efficient System Operations	Environmental Protection	Resilient Region	Livable and Prosperous Communities
Pageland Road (VA 704) Widening: Sudley Road (VA 234) to Lee Highway (US 29)	\$18,749,000	2045	Roadway Widening						<input checked="" type="checkbox"/>		
Potomac Avenue Capacity Reduction for New Bus Lane: Potomac Avenue to Arlington/Alexandria Line	\$7,496,000	2028	Capacity Reduction	<input checked="" type="checkbox"/>		<input checked="" type="checkbox"/>	<input checked="" type="checkbox"/>	<input checked="" type="checkbox"/>	<input checked="" type="checkbox"/>	<input checked="" type="checkbox"/>	<input checked="" type="checkbox"/>
Prentice Drive Extension: Loudoun Station Drive to Lockridge Road (VA 789)	\$165,743,000	2030/2031	Extension	<input checked="" type="checkbox"/>	<input checked="" type="checkbox"/>	<input checked="" type="checkbox"/>	<input checked="" type="checkbox"/>	<input checked="" type="checkbox"/>	<input checked="" type="checkbox"/>	<input checked="" type="checkbox"/>	<input checked="" type="checkbox"/>
Reston Parkway (VA 602) Widening: Dulles Toll Road to South Lakes Drive	\$45,000,000	2045	Roadway Widening	<input checked="" type="checkbox"/>	<input checked="" type="checkbox"/>	<input checked="" type="checkbox"/>	<input checked="" type="checkbox"/>				<input checked="" type="checkbox"/>
Rippon Boulevard Widening: West of Wigeon Way to Rippon VRE Station	\$20,000,000	2030	Roadway Widening	<input checked="" type="checkbox"/>		<input checked="" type="checkbox"/>	<input checked="" type="checkbox"/>				
Rock Hill Road Overpass Extension: Sunrise Valley Drive to Innovation Avenue (VA 209)	\$435,217,373	2032	Extension								<input checked="" type="checkbox"/>
Rolling Road (VA 638) Widening: DeLong Drive to Virginia Drive	\$22,400,000	2045	Roadway Widening	<input checked="" type="checkbox"/>		<input checked="" type="checkbox"/>	<input checked="" type="checkbox"/>			<input checked="" type="checkbox"/>	<input checked="" type="checkbox"/>
Rolling Road (va 638) Widening: Viola Street to Old Keene Mill Road (VA 644)	\$93,459,000	2026	Roadway Widening	<input checked="" type="checkbox"/>		<input checked="" type="checkbox"/>	<input checked="" type="checkbox"/>				
Rollins Ford Road Extension: Wellington Road to Linton Hall Road	\$20,000,000	2040	Extension			<input checked="" type="checkbox"/>	<input checked="" type="checkbox"/>				<input checked="" type="checkbox"/>
Russell Branch Parkway Extension: Belmont Ridge Road (VA 659) to Tournament Drive	\$38,240,000	2050	Extension	<input checked="" type="checkbox"/>	<input checked="" type="checkbox"/>	<input checked="" type="checkbox"/>	<input checked="" type="checkbox"/>	<input checked="" type="checkbox"/>	<input checked="" type="checkbox"/>	<input checked="" type="checkbox"/>	<input checked="" type="checkbox"/>
Shellhorn Road (VA 643) Extension: Loudoun County Parkway (VA 606) to Moran Road (VA 634)	\$126,000,000	2027	Extension								<input checked="" type="checkbox"/>
Shirely Gate Road (VA 655) Extension: Fairfax County Parkway (VA 286) to Braddock Road (VA 620)	\$31,000,000	2028	Extension	<input checked="" type="checkbox"/>		<input checked="" type="checkbox"/>	<input checked="" type="checkbox"/>	<input checked="" type="checkbox"/>			<input checked="" type="checkbox"/>

VISUALIZE 2050

National Capital Region Transportation Plan

March 1-30, 2024, Public Comment Opportunity

Supplementary Material to Explain Draft Regionally Significant for Air Quality Projects (to be completed in 2026 or later)
for Inclusion in Air Quality Analysis of Visualize 2050 and the FY 2026-2029 Transportation Improvement Program as Provided by TPB Member Agencies

TPB Project Title	Cost	Completion Year	Project Type	Safety	Maintenance	Reliability	Affordable and Convenient	Efficient System Operations	Environmental Protection	Resilient Region	Livable and Prosperous Communities
Soapstone Drive Overpass Extension: Sunrise Valley Drive to Sunset Hills Road	\$235,000,300	2034	Extension	<input checked="" type="checkbox"/>		<input checked="" type="checkbox"/>	<input checked="" type="checkbox"/>	<input checked="" type="checkbox"/>	<input checked="" type="checkbox"/>		<input checked="" type="checkbox"/>
Summit School Road Extension: Telegraph Road to existing terminus of Summit School Road	\$39,930,483	2027	Extension			<input checked="" type="checkbox"/>	<input checked="" type="checkbox"/>				
Sycolin Road (VA 643) Widening: Loudoun Center Place to Crosstrails Boulevard	\$65,679,000	2030	Roadway Widening	<input checked="" type="checkbox"/>	<input checked="" type="checkbox"/>	<input checked="" type="checkbox"/>	<input checked="" type="checkbox"/>	<input checked="" type="checkbox"/>	<input checked="" type="checkbox"/>	<input checked="" type="checkbox"/>	<input checked="" type="checkbox"/>
Telegraph Road (VA 611) Widening: Franconia Road (VA 644) to Leaf Road North	\$275,000,000	2045	Roadway Widening	<input checked="" type="checkbox"/>		<input checked="" type="checkbox"/>	<input checked="" type="checkbox"/>	<input checked="" type="checkbox"/>	<input checked="" type="checkbox"/>		<input checked="" type="checkbox"/>
Telegraph Road Widening: Prince William Parkway (VA 294) to Caton Hall Road	Not currently available	2027	Roadway Widening			<input checked="" type="checkbox"/>	<input checked="" type="checkbox"/>				
Town Center Parkway Extension: Sunrise Valley Drive to Sunset Hills Road	\$309,330,253	2030	Extension	<input checked="" type="checkbox"/>		<input checked="" type="checkbox"/>	<input checked="" type="checkbox"/>		<input checked="" type="checkbox"/>		<input checked="" type="checkbox"/>
Van Buren Road (VA 627) Extension: Dumfries Road (VA 234) to Cardinal Drive (VA 610)	\$82,000,000	2040	Extension			<input checked="" type="checkbox"/>	<input checked="" type="checkbox"/>				<input checked="" type="checkbox"/>
Van Dorn Street (VA 613) at Franconia Road (VA 644) Interchange Improvements	\$173,000,000	2035	Intersection/ Interchange/ Ramp Improvements	<input checked="" type="checkbox"/>	<input checked="" type="checkbox"/>	<input checked="" type="checkbox"/>	<input checked="" type="checkbox"/>	<input checked="" type="checkbox"/>	<input checked="" type="checkbox"/>		<input checked="" type="checkbox"/>
Wellington Road (VA 674) Widening: Rixlew Lane (VA 668) to University Boulevard	\$180,000,000	2028/2045	Roadway Widening	<input checked="" type="checkbox"/>	<input checked="" type="checkbox"/>	<input checked="" type="checkbox"/>	<input checked="" type="checkbox"/>				
Westwind Drive Extension: Loudoun County Parkway to Old Ox Road (VA 606)	\$126,677,000	2026	Extension								
Williamson Boulevard Extension: Sudley Manor Drive to Portsmouth Road	Not currently available	2030	Extension			<input checked="" type="checkbox"/>	<input checked="" type="checkbox"/>	<input checked="" type="checkbox"/>			<input checked="" type="checkbox"/>

Government of the District of Columbia

Department of Transportation



February 21, 2024

The Honorable Christina Henderson, Chair
National Capital Region Transportation Planning Board
Metropolitan Washington Council of Governments
777 North Capitol Street N.E., Suite 300
Washington, DC 20002-4290

Dear Chair Henderson,

The District Department of Transportation (DDOT) welcomes the public comments transmitted as a part of the update for the National Capital Region Transportation Planning Board's (TPB) Visualize 2050 Plan. The District Department of Transportation (DDOT) is committed to ensuring accessible and inclusive public involvement in all agency projects and the public comment opportunity for projects included in the National Capital Region's Transportation Plan update is an important step in this process.

DDOT's project-related decisions are guided by the Department's strategic plan, moveDC. moveDC's [seven goals](#) are: safety, equity, mobility, project delivery, management and operations, sustainability, and enjoyable spaces. DDOT's project selection process assesses each project with the established goals of moveDC to ensure projects selected to receive funding are in alignment with the stated goals of the future of the District's transportation system. This prioritization process includes each project listed in the Visualize 2045 plan.

Several of DDOT's projects received public input during the Transportation Planning Board's comment period. Of these, the District-wide Bicycle and Pedestrian Management Program received the most. The Bicycle and Pedestrian Management Program serves a key goal for DDOT, which is to ensure that 75% of District residents commute using a mode other than single-occupancy vehicle. Additionally, bicycle lane additions to roadways can help to reduce crashes between 30 and 49%, depending on the roadway classification, making the District's network of bicycle lanes a crucial component of our roadway safety toolkit.

DDOT also received comments regarding our bus priority projects, including the Pennsylvania Ave SE Bus Priority Project. We are pleased to report that Phase I of this project, from 2nd St SE to 13th St SE, is complete and operational. This project preserves Pennsylvania Ave SE as a scenic boulevard offering views of the Capitol building, while also providing safer crossings for pedestrians, protected bicycle facilities for cyclists, and dedicated transit lanes during the morning and evening rush hours for Metro bus routes along this roadway. As progress on Phase II, from 13th St SE to Barney Circle is completed, this project will increase service reliability for over 11,000 riders each day who utilize corresponding Metrobus routes.

DDOT's mission is to ensure that all current and future District residents and visitors are able to move through the District safely, utilizing our multimodal network. Strengthening this network is a key strategy to better serve current and future roadway users, including updating and maintaining the District's network of bikeways and transit priority corridors.

Sincerely,

Asad Nouri

Asad Nouri

Interim Chief Administrative Officer
District Department of Transportation

m. 202.907.7241

e. asad.nouri@dc.gov

February 29, 2024

The Honorable Christina Henderson
Chair
National Capital Region Transportation Planning Board
Metropolitan Washington Council of Governments
777 North Capitol Street, NE, Suite 300
Washington DC 20002

Dear Chair Henderson:

In response to the National Capital Region Transportation Planning Board's (TPB) request for feedback to the responses received during the 2023 open public comment period, the Maryland Department of Transportation (MDOT) is happy to respond to the projects under review to be included in the technical inputs for the Visualize 2050 Long Range Transportation Plan.

Joint Response – American Legion Bridge and I-270 Corridor Program (formerly OP Lanes Phase 1) with I-270 Innovative Congestion Management

Governor Moore unveiled plans in August 2023 for the American Legion Bridge and I-270 Corridor Program to enhance the Washington Region's access, opportunity, and quality of life. MDOT hosted four open house meetings in November and December of 2023 to engage communities and stakeholders for feedback on potential multimodal solutions for the corridor. There was broad agreement on bike and pedestrian amenity across the Potomac River to connect to existing networks, the need to address the aging, existing bridge, and better bus transit across the river made viable through the use of HOT lanes. MDOT has also listened to the feedback and adjusted the parts of the program without strong support by de-prioritizing work in the Rockville area, focusing on addressing the bridge and I-495, and starting the I-270 north multi-modal study where there is strong support for solutions from Upper Montgomery and Frederick Counties.

The project will replace the 60-year-old American Legion Bridge, which provides a critical freight and passenger connection between Maryland and Virginia and expand transportation options in the corridor to include HOV/transit lanes and bicycle and pedestrian options. Replacing the bridge will bring the asset into a state-of-good-repair and enhance safety and mobility. The new bridge will include expanded bicycle and pedestrian connections between multimodal facilities in Maryland and Virginia, increasing active transportation opportunities and access to recreation. Corridor improvements will support the implementation of new transit connections between Maryland and Virginia and the enhancement of transportation demand management to reduce single-occupancy vehicle travel in the I-495/I-270 corridor.

The Honorable Christina Henderson
Page Two

MD 28/MD 198 Corridor Study

In 2021, the Maryland State Highway Administration (SHA) completed the MD 28/MD 198 Corridor Improvement Study. The study identified five segments within the corridor that could advance individually and made preliminary recommendations for each. Recommendations are intended to enhance safety and operations and included access roads, new shared use paths, sidewalks, roundabouts, new left turns lanes and medians.

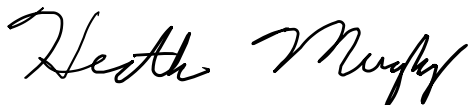
SHA is currently advancing Segment D (MD 198 from Old Columbia Pike to US 29A) through planning. In 2022, the Segment D Preliminary Planning Report was completed, which identified preliminary concepts. SHA is currently working to identify a preferred alternative to obtain environmental approvals so that the project may advance to detailed design.

US 29 Corridor

As part of the development of the Draft FY 2024-2029 Consolidated Transportation Program (CTP), SHA conducted a review of unfunded Development and Evaluation program projects and removed older corridor-level projects that would need significant reevaluation to advance. As a result of that process, the US 29 corridor project was removed from the draft Montgomery portion of the CTP and also from the technical inputs for the Visualize 2050 Long Range Transportation Plan.

MDOT remains committed to creating a safe and reliable transportation system that connects the residents of the National Capital Region and the entire State to economic opportunities through all modes of transportation. Thank you again for the comments on the projects included in the Visualize 2050 technical inputs. We appreciate hearing from you. If you have any questions or concerns, please contact Ms. Kari Snyder MDOT Office of Planning and Capital Programming (OPCP) Regional Planner at 410-865-1305, toll free 888-713-1414 or via e-mail at ksnyder3@mdot.maryland.gov, of course, feel free to contact me directly.

Sincerely,



Heather Murphy
Director
Office of Planning and Capital Programming

cc: Ms. Kari Snyder, Regional Planner, OPCP, MDOT



COMMONWEALTH of VIRGINIA

DEPARTMENT OF TRANSPORTATION

Stephen C. Brich, P.E.
Commissioner

1401 East Broad Street
Richmond, Virginia 23219

February 23, 2024

The Honorable Christina Henderson, Chair
National Capital Region Transportation Planning Board
Metropolitan Washington Council of Governments
777 North Capitol Street, N.E., Suite 300
Washington, DC 20002-4201

RE: TPB Virginia Member Agencies Responses to Negative Comments from 2023 Public Feedback

Dear Chair Henderson:

As requested, provided below are the general responses provided by the Virginia Department of Transportation (VDOT), Metropolitan Washington Airports Authority (MWAA), Fairfax, Loudoun, and Prince William counties, and the City of Manassas to negative public comments received on the Visualize2045 projects undergoing re-evaluation for submission to the Visualize2050 Plan. The specific responses below are for projects that received mostly negative comments during the TPB informal public comment period in 2023, that were generated from the project list provided by TPB staff on January 19, 2024.

VDOT RESPONSE

I-66 Improvements

The I-66 project provides benefits to commuters traveling through Northern Virginia, which moves more people, provides reliable trips, and offers new travel options. Revenues collected from tolls are used to fund transit and other multimodal projects. Through the Northern Virginia Transportation Commission (NVTC), Commuter Choice Program, the revenue collected from tolls along I-66 are reinvested to fund transit and multimodal projects. To date, \$66.2M of toll revenue has been reinvested to fund 41 transit/multimodal projects along the I-66 corridor, one of the proven benefits of the I-66 project. Although this project is reflected in the current long-range plan, Visualize2045, VDOT has no future proposals to expand I-66, and therefore it will not be included in next plan update for Visualize2050.

MWAA RESPONSES

Dulles Airport Access Road Project

MWAA will continue to monitor Dulles International Airport passenger growth, Silver Line Metro ridership, vehicular usage of the Dulles International Airport Access Highway (DIAAH), and other modal splits in the region. Widening of the road from 4 to 6 lanes will be executed when the road's level of service deteriorates and/or safety and operational improvements are required. Washington Dulles International Airport has had a dramatic increase in usage since the construction of the original 4-lane access road in the 60's. Widening will occur within the present access right of way, eliminating the need

for additional land for this project. This project will also contribute to the development of a system of roadways that enhances quality of life and promotes a strong and growing economy in Fairfax County and throughout the entire region. This project will likely be implemented in a multi-phased manner.

Dulles Toll Road Expansion

MWAA who operates the Dulles Toll Road, has not seen traffic volumes on the Dulles Toll Road return to pre-pandemic levels, despite the large increase in corporate and residential developments along the Dulles Corridor. MWAA will continue to monitor vehicular volumes, traffic congestion and Silver Line ridership and propose Dulles Toll Road expansion as necessary to address improvements required to meet level of service standards, safety concerns, and/or operational requirements.

Dulles Toll Road Collector

The Dulles Toll Road Collector project will construct collector-distributor lanes to allow closely spaced interchanges to be constructed in Tysons. This project is located near an Equity Emphasis Area and will provide additional access to several Activity Centers. The project improves connectivity and accessibility to transit for low income/minority populations. This project allows for additional access points from the Dulles Toll Road directly into Tyson's Grid of Streets. The project enhances continuity and connectivity of the street network, which will contribute to lower emissions, as some vehicles will be able to take a more direct and shorter route, reducing travel times and congestion with the Tysons area. Project also provides improved access to the Spring Hill Metrorail Station. This project also contributes to the development of a system of roadways that enhances quality of life and promotes a strong and growing economy in Fairfax County and throughout the entire region.

FAIRFAX COUNTY RESPONSES

US 29 Widening Project (ELC City of Fairfax (Vic. Nutley St.) to Capital Beltway)

After review by County staff, Fairfax County residents, and the Fairfax County Board of Supervisors, this project will not be submitted to the region's long-range plan at this time.

Fairfax County Parkway Improvements

The Fairfax County Parkway Improvements project adds lanes for vehicles and bus service, incorporates enhanced bicycle and pedestrian facilities, and provides safety enhancements that will contribute to the development of an interconnected transportation system that enhances quality of life and promotes a strong and growing economy in Fairfax County and throughout the region. The project increases capacity from Reston/Herndon to Springfield and Fort Belvoir for vehicles and buses and provides pedestrian and bicycle facilities, thereby providing more attractive alternatives to motorized travel, reducing congestion and increasing mobility, and increasing multimodal connectivity and access. The project helps contribute to lower emissions as congestion reduction benefits bus service, which also reduces single occupancy vehicle (SOV) trips. This project connects regional Activity Centers, as well as an Equity Emphasis Area (EEA), improving multimodal connections for many in the County.

Rolling Road Widening Project: From DeLong Drive to Fullerton Road

The Rolling Road Widening project will contribute to developing an interconnected transportation system that enhances the quality of life and promotes a strong and growing economy in Fairfax County and throughout the entire region. The project provides additional roadway capacity, which will lead to reduced congestion along the corridor, reducing travel time, and lowering emissions from automobiles idling on Rolling Road. This project will improve the County's multi-modal transportation system that increases capacity for vehicles and buses as well as provide enhanced pedestrian and bicycle facilities and crossings. This project includes active transportation improvements for pedestrians and bicyclists and

improves bus stops facilities and access to bus stops for transit riders. In addition, the project improves roadway safety with access management and other improvements.

VA 7: Two projects:

Intersection at Leesburg Pike and Dolly Madison Road

This project will contribute to the development of an interconnected transportation system that enhances quality of life and promotes a strong and growing economy in Fairfax County and throughout Tysons, which is an economic engine for the region. This project is a key component in a planned grid of streets identified in the Tysons Comprehensive Plan to disperse vehicle traffic and improve mobility for pedestrians and bicyclists. Adding vehicular capacity is not the purpose of this project. The project will remove the current interchange at this location to construct an at-grade solution. No additional through lanes will be added to Route 7 or Route 123. The new at-grade intersection will allow for place-making opportunities and for improved pedestrian and bicycle facilities, greatly increasing mobility over the current grade-separated interchange.

Roadway segment from I-495 to Route 123

This project will contribute to the development of an interconnected transportation system that enhances quality of life and promotes a strong and growing economy in Tysons, which is an economic engine for the region, and throughout Fairfax County. Adding vehicular capacity is not the purpose of this project. The proposed widening is to allow for future median-running bus rapid transit (BRT) lanes. In addition, access management improvements that will increase safety along the corridor are included. Extensive pedestrian and bicycle improvements being made as part of the project, allowing for shared-use paths along both sides of the corridor, are also planned. The overall goal of BRT is to reduce single-occupancy vehicle (SOV) demand along the corridor and increase transit ridership. Pedestrian and bicycle safety should be increased along the corridor, especially at intersections.

Reston Parkway Improvements: From Baron Cameron Avenue to South Lakes Drive

The Reston Parkway Improvements project, which adds lanes for vehicles and buses for a limited stretch of roadway leading to the Dulles Toll Road (a major regional facility that leads to international travel) also incorporates enhanced bicycle and pedestrian facilities and provides safety enhancements. The project increases north-south capacity for vehicles and buses, reducing congestion and increasing mobility, and provides pedestrian and bicycle facilities increasing multimodal connectivity and access. The project enhances the continuity and connectivity of the street network, which will contribute to lower emissions, as some vehicles will be able to take a more direct and shorter route. Reduction in congestion benefits bus service, which also reduces single occupancy vehicle (SOV) trips. This project affects an Equity Emphasis Area (EEA) and an Activity Center and will improve multimodal connections for disadvantaged populations.

VA 123 Widening (Fairfax) Two Projects: From VA 267 Dulles Access/Toll Rd to Great Falls St/Evans Farm Drive and VA 7 Leesburg Pike to I-495 Capital Beltway

The VA 123 Widening project will contribute to developing an interconnected transportation system that enhances the quality of life and promotes a strong and growing economy in Fairfax County. This project enhances the County's multi-modal transportation system by increasing capacity for vehicles and buses and providing enhanced pedestrian and bicycle facilities. The project provides additional capacity, which will lead to reduced congestion along the corridor, reducing travel time, and lowering emissions from automobiles idling on VA 123. Related bike and pedestrian improvements provide an alternative to motorized travel. This corridor features bus routes as well and access to the McLean Metrorail Station.

Magarity Toll Road Expansion

After review by County staff, Fairfax County residents, and the Fairfax County Board of Supervisors, this project will not be submitted to the region's long-range plan at this time.

US 50 Improvements

The US 50 Improvements project contributes to developing an interconnected transportation system that enhances quality of life and promotes a strong and growing economy in Fairfax County and throughout the entire region. This project adds to the County's multi-modal transportation system, increasing capacity for vehicles and buses and providing enhanced pedestrian and bicycle facilities. The project provides additional roadway capacity, which helps reduce congestion along the corridor, reducing travel time, and lowering emissions from automobiles idling on Route 50. Related bicycle and pedestrian facility improvements will provide an alternative to motorized travel. Regional and local buses also traverse this corridor and a reduction in congestion benefits bus service which can help improve travel time. This project will also provide improved walk/bike access to transit. This project traverses several Equity Emphasis Areas and improves multimodal connections for disadvantaged populations. It will also improve connectivity and accessibility to several Activity Centers.

New Braddock Road

After review by County staff, Fairfax County residents, and the Fairfax County Board of Supervisors, this project will not be submitted to the region's long-range plan at this time.

New Guinea Road, Construct

After review by County staff, Fairfax County residents, and the Fairfax County Board of Supervisors, this project will not be submitted to the region's long-range plan at this time.

Stringfellow Roadway Improvements

After review by County staff, Fairfax County residents, and the Fairfax County Board of Supervisors, this project will not be submitted to the region's long-range plan at this time.

Braddock Road Improvements (Fairfax County Parkway to Route 123/Ox Road)

The Braddock Road Improvements project, which adds lanes for vehicles and bus service, incorporates enhanced bicycle and pedestrian facilities, and provides safety enhancements, will contribute to the development of an interconnected transportation system that enhances the quality of life and promotes a strong and growing economy in Fairfax County and throughout the entire region. The project increases east-west capacity for vehicles, reducing congestion and increasing mobility, and provides pedestrian and bicycle facilities. Reduction in congestion benefits bus service, which also reduces single occupancy vehicle (SOV) trips. Related bicycle and pedestrian facility improvements will provide an alternative to motorized travel. This project may benefit disadvantaged populations, but it is not in or near an Equity Emphasis Area (EEA).

Lee Highway Widening (Route 29) Phase 2: From Union Mill Road/Centreville Farm Road to Buckleys Gate Drive/Summit Drive

The Route 29 Widening project contributes to developing an interconnected transportation system that enhances the quality of life and promotes a strong and growing economy in Fairfax County and throughout the entire region. This project improves the County's multi-modal transportation system by increasing capacity for vehicles and providing enhanced pedestrian and bicycle facilities. The project provides additional roadway capacity, which will reduce congestion along the corridor, reducing travel time, and lowering emissions from automobiles idling on Route 29. The scope of the Route 29 Phase 2 project includes ten-foot-wide shared use paths on both sides of Route 29 to accommodate pedestrians,

bicyclists, and others engaged in active transportation. Additionally, trail connectivity will be improved by extending the shared use path on the south side of Route 29 from Buckleys Gate Drive to Gun Powder Road where an existing trail currently terminates. Fairfax County also has plans to make operational local bus service (Connector Route 610) along Route 29, and this project will accommodate bus stops at the intersection of Meadow Estates Drive. Access management strategies will be applied to improve safety and operations along the corridor.

Route 1 Improvements (Fairfax and Prince William Counties)

This project will contribute to developing an interconnected transportation system that enhances the quality of life and promotes a strong and growing economy in Fairfax County and throughout the entire region. This project will improve the County's multi-modal transportation system by increasing capacity for vehicles and buses and providing enhanced pedestrian and bicycle facilities and crossings. The project provides additional roadway capacity, which will reduce congestion along the corridor, reducing travel time, and lowering emissions from automobiles idling on Richmond Highway. The Richmond Highway Corridor Improvement Project, administered by the Virginia Department of Transportation (VDOT), between Jeff Todd Way and Sherwood Hall Lane in Fairfax County includes facilities for pedestrians, bicyclists, a wide median to accommodate future Bus Rapid Transit (BRT), and stormwater management, in addition to bridge replacements. Active transportation facilities include six-foot wide sidewalks for pedestrians and eight-foot-wide two-way cycle tracks on both sides of Richmond Highway. A major feature of this project is to accommodate the future median-running BRT system that Fairfax County is constructing from the Huntington Metrorail Station to Fort Belvoir, which will decrease vehicular demand and increase transit ridership. Numerous stormwater management facilities such as wet ponds and bioretention facilities will be provided to control stormwater quantity and quality along the corridor. Existing bridges at Dogue Creek and Little Hunting Creek will be replaced by bridges that are higher and longer based on hydrology, hydraulic, and floodplain analysis. The new stormwater management facilities coupled with the higher and longer bridges should make Richmond Highway more resilient to flooding. There is another multimodal Route 1 project from Pohick Road to north of Occoquan River Bridge. Like the Richmond Highway Corridor Improvement Project, the southern segment will include improved facilities for pedestrians, bicyclists, stormwater management, and a future median-running BRT.

Shirley Gate Road Improvements

The Shirley Gate Improvements project has been approved by the Board of Supervisors and design is underway, including early acquisition of one property. Project will construct two-lanes on future 4-lane right-of-way and include a shared-use path on one side and sidewalk on the other. The project will provide the primary access point to future Patriot Park expansion planned by Fairfax County Park Authority. It is being coordinated with the Virginia Department of Transportation administered Fairfax County Parkway/Pope's Head Road interchange project. Project is expected to provide some relief of traffic congestion on Route 123 between Braddock Road and Fairfax County Parkway and along Braddock Road between existing Shirley Gate Road and Route 123.

Soapstone Drive Connector

The Soapstone Drive Connector project contributes to developing an interconnected transportation system that enhances quality of life and promotes a strong and growing economy in Fairfax County and throughout the entire region. This project will develop the County's multi-modal transportation system by increasing capacity for vehicles and buses as well as provide enhanced pedestrian and bicycle facilities. The project provides a direct connection across the Dulles Toll Road, improving access to the Wiehle-Reston East Metrorail Station for buses, vehicles, bicyclists, and pedestrians. Included enhancements to the street network improve continuity and connectivity, offering a more direct route for

some vehicles. Additionally, improvements to bicycle and pedestrian facilities offer alternative transportation options. Situated in an Activity Center near an Equity Emphasis Area, the project enhances connectivity and accessibility to transit for low-income and minority populations. Overall, the project contributes to developing an interconnected transportation system, enhancing quality of life, promoting economic growth in Fairfax County and the region.

LOUDOUN COUNTY RESPONSES

Croson Lane Widening

Croson Lane is already four lanes between Belmont Ridge Road and Claiborne Parkway. The adopted Countywide Transportation Plan (CTP) calls for the widening of Croson Lane (Route 645) to four lanes between Claiborne Parkway (Route 901) and Old Ryan Road (Route 772). The project entails the construction of a four-lane, median-divided roadway and includes the construction of a sidewalk on one side of the road and a shared use path on the other side. Crosswalks are anticipated at major intersections. Croson Lane is a designated transit corridor per the CTP.

Crosstrail Boulevard, Segment C

Crosstrail Boulevard is currently constructed between Russell Branch Parkway and Sycolin Road. The adopted Countywide Transportation Plan calls for the construction of Crosstrail Boulevard as a four-lane median divided major collector between Sycolin Road and the Dulles Greenway. The project also includes shared use paths on both sides of the road and the construction of a bridge over Sycolin Creek.

Dulles West Boulevard

Dulles West Boulevard is currently constructed as a four-lane road between Loudoun County Parkway and Arcola Boulevard as part of a developer proffer. The adopted Countywide Transportation Plan calls for the construction of Dulles West Boulevard between Arcola Boulevard and Northstar Boulevard as a four-lane median divided major collector with shared use paths on both sides of the road; a portion of this roadway segment, between Racefield Lane and Northstar Boulevard, is being built as part of the County's Northstar Boulevard (Shreveport Drive to Route 50) design-build project.

Farmwell Road Intersection Improvements

This project does not widen Farmwell Road. This project provides for improvements to the Farmwell Road corridor intersections at Ashburn Road, Dodge Terrace/Hemingway Drive, Ashburn Village Boulevard, and Smith Switch Road/Waxpool Road. Loudoun County Transit currently operates bus service along a portion of Farmwell Road between Ashburn Village Boulevard and Ashburn Road.

Loudoun County Parkway

This project has been completed and opened to traffic. The project widened Loudoun County Parkway (Route 607) from four to six lanes between Ryan Road (Route 772) and Shellhorn Road (Route 643), and the construction of turn lanes at intersections. Construction of the roadway improvements were proffer conditions of the Silver District West development.

Loudoun County Parkway Interchange at US 50

The adopted Countywide Transportation Plan calls for the construction of a grade-separated interchange at the intersection of US Route 50 and Loudoun County Parkway (Route 606). In addition, the project includes the construction of a ten-foot wide, shared use path on the west side of Loudoun County Parkway between Riding Center Drive and Evergreen Mills Road. This shared use path will provide a bicycle and pedestrian connection across US Route 50, connecting existing bicycle and pedestrian networks on both the north and south sides of US Route 50.

Loudoun County Parkway Widening (Shellhorn Road to Ryan Road)

This project has been completed and opened to traffic. The project widened Loudoun County Parkway (Route 607) from four to six lanes between Ryan Road (Route 772) and Shellhorn Road (Route 643), and the construction of turn lanes at intersections. Construction of the roadway improvements were proffer conditions of the Silver District West development.

Prentice Drive Improvements

The adopted Countywide Transportation Plan (CTP) calls for the construction of this project in two segments: (1) between Loudoun County Parkway (Route 607) and Lockridge Road (Route 789); and (2) between Loudoun County Parkway (Route 607) and Shellhorn Road (Route 643) at its intersection with Metro Center Drive, with a new road (referred to as North-South Connector in the CTP) between Prentice Drive and Waxpool Road (Route 640). The project is intended to provide more direct connectivity to the Ashburn Metrorail Station. Both roadways will be designed as four-lane major collectors, with associated turn lanes and bicycle and pedestrian facilities.

Route 15 North Widening

The results of the Route 15 North Congestion Report, initiated to reduce traffic congestion between Battlefield Parkway and Whites Ferry Road, were presented to the Board of Supervisors in May 2017. Recommendations from the report included widening US Route 15 from two to four lanes between Battlefield Parkway and Montresor Road. As a result of the report, the board directed the initiation of the Route 15 North Safety and Operations Study to identify potential improvements between Whites Ferry Road and the Maryland state line. The adopted Countywide Transportation Plan (CTP) was amended in 2018 to widen US Route 15 from two to four lanes between Battlefield Parkway and Montresor Road. The project scope includes: a signalized Continuous Green "T" (CGT intersection) at North King Street to allow through traffic to continue north on US Route 15 without stopping, an updated signalized intersection at Whites Ferry Road, and a two-lane hybrid roundabout at Montresor Road at a realigned section of Limestone School Road opposite Montresor Road. The project also includes a shared use path / regional trail along the west side of US Route 15 from Tuscarora High School to Montresor Road, and a shared use path / regional trail along the entire length of Whites Ferry Road. As called for by the CTP, the design process includes context-sensitive methods for transportation projects in the Rural Policy Area and follows the guidelines for the Journey Through Hallowed Ground National Scenic Byway.

Route 50/Everfield Roundabout

Comment acknowledged. Design of this roundabout has not yet commenced, but this comment will be forwarded to Loudoun County transportation design staff for consideration.

Route 50 Corridor Improvements in Fairfax and Loudoun Counties

This project is named as it is because it initially included intersection improvements in both Loudoun County and western Fairfax County. Currently, the only improvements associated with this project in Loudoun County are intersection improvements at Pleasant Valley Road, Tall Cedars Parkway, and Arcola Boulevard / Gum Spring Road, as well as an auxiliary lane westbound between Pleasant Valley Road and Tall Cedars Parkway.

Route 7/George Washington Boulevard Overpass

This project has been completed and was opened to traffic on November 30, 2023.

Route 7/690 Interchange

This project funds the construction of a grade-separated interchange at Route 7 and Route 690 (Hillsboro Road) in Purcellville, located approximately two miles west of the Route 7/Route 287 (Berlin Turnpike)

interchange and approximately two miles east of the Route 7 and Business Route 7 interchange. The proposed Route 7/Route 690 interchange would alleviate connectivity issues in the roadway network around Purcellville, reduce traffic in downtown Purcellville and on Route 287, and provide a more direct route to destinations north of Route 7, including Woodgrove High School and Mountain View Elementary School.

Sterling Boulevard Extension

This project will extend Sterling Boulevard from Pacific Boulevard to a connection with Moran Road (Route 634). The roadway will be a four-lane median divided major connector, associated turn lanes, a shared used path on one side of the road and a sidewalk on the other. When completed, this project will improve access to the Loudoun Gateway Metrorail Station and connect with a planned extension of Shellhorn Road.

Sycolin Road (Loudoun Center Place to Crosstrail Boulevard)

The adopted Countywide Transportation Plan calls for the continuation of the four-lane segment already constructed by the Town of Leesburg. This project will widen Sycolin Road between Loudoun Center Place and Crosstrail Boulevard. The new roadway will be including shared use paths on both sides of the road.

US 15 Improvements

The US Route 15 widening project in the adopted Visualize 2045 is located in Prince William County.

US 50 Improvements

It is not clear that the comment is referencing a project in Loudoun County. The only US Route 50 widening in Visualize 2045 for Loudoun was Project CE3740 (Route 50 Widening between Tall Cedars Parkway and Loudoun County Parkway). This project will be removed from the draft Visualize 2050 Plan as this section of roadway has already been widened to six lanes.

VA 7 Widening

This project provides for the widening of Route 7 Eastbound from two lanes to three lanes between Route 9 and the Dulles Greenway (Route 267), and Westbound from two lanes to three lanes from South King Street (US Route 15) to West Market Street. The project also includes the widening of the Route 7 bridges over South King Street (US Route 15). It is noted that in previous SMART SCALE funding applications this project scores high as one of the most congested roadway segments in Northern Virginia.

PRINCE WILLIAM COUNTY RESPONSES

Battlefield Park Bypass Project

Prince William County has removed the Battlefield Park Bypass Project from the long-range plan. The 2022 update to the County's Comprehensive Plan includes an alternative option to the Battlefield Park Bypass. This alternative was initially added after receiving and analyzing public and key stakeholder input, including the National Park Service. This option, called the Route 29 Alternate Road, would allow for the closure of Route 29 through the Manassas Battlefield Park, and provide a new roadway connection to facilitate through traffic with fewer impacts. The Route 29 Alternate Road is being submitted to the long-range plan in lieu of the Battlefield Park Bypass project. The County continues to work towards better shared local and regional mobility goals.

Route 1 Improvements

Approximately 5 miles of Route 1 has been widened in Prince William County. Substantial federal, state, and regional funds have been allocated to an active project to widen an additional two miles. These projects, and additional improvements on Route 1, are critical to providing the capacity for multimodal travel options on this key corridor. In addition to vehicle travel, the projects improve travel times for local, fare free OmniRide bus routes, and the improvements will create a continuous network of pedestrian and bicycle facilities on the corridor. Prince William County has submitted a separate project to the long-range plan for the planning of High-Capacity Transit along the corridor, consistent with the County's Comprehensive Plan, and the Route 1 Improvements project will include facilitating connectivity for high-capacity transit systems. Additionally, the County has submitted a project to incorporate green infrastructure on the Route 1 corridor to the TPB's Transportation Resiliency Improvement Plan (TRIP) to implement recommendations from an active Transportation-Land Use Connections (TLC) study to enhance the resiliency of transportation infrastructure by improving stormwater management in flood prone areas and providing long term considerations for sustainability to help the region achieve the adopted climate change mitigation goals. All submitted projects along the Route 1 Corridor are designed to work holistically to improve mobility while achieving local and regional goals for equity and sustainability.

For the Battlefield Parkway/Route 15 Bypass Interchange

This project reduces traffic congestion and increases safety without adding additional through travel lanes on the Rt 15 Bypass by replacing the existing at-grade signalized intersection with a grade-separated interchange. The interchange provides easier east-west travel on Battlefield Parkway over the Rt 15 Bypass, especially for pedestrians and bicyclists. The project includes a 10-foot shared use path on one side of Battlefield Pkwy and a 5-foot sidewalk on the other side, along with new curb ramps and crosswalks.

CITY OF MANASSAS RESPONSES

Sudley Road 3rd Lane

This project is currently in advertisement for construction. This project is located along a commercial corridor that is already developed and will have minimal impacts to woodlands. No residents will need to be relocated as part of this project, nor will there be any physical impacts to residential housing or any other buildings along the corridor.

This project is currently in advertisement for construction. A road diet along this corridor is not a viable approach at this time given the high traffic volumes on this roadway and would exacerbate traffic congestion. The Manassas 2040 Comprehensive Plan calls for the Sudley Road corridor to be redeveloped into a mixed-use center, and these suggestions will be taken into account as the corridor transforms. We are looking to add bicycle facilities along Sudley Road and encourage members of the public to view the alternatives at www.manassasva.gov/sudleybike.

Roundabout at Sudley and Centreville

This project is currently at 90% design. The City's Transportation Master Plan recommended a roundabout at this location to improve level of service while also creating safer accommodations for pedestrians.

Liberia Avenue Widening

This project was identified as a recommendation in the City's Transportation Master Plan to improve congestion from Level of Service (LOS) "F" to "D" in the AM Peak hour and LOS "E" to "D" in

The Honorable Christina Henderson
February 23, 2024
Page Ten

the PM Peak hour in 2040. The data from the traffic model analysis supports widening eastbound Liberia Avenue between Route 28 and Euclid Avenue, which will reduce longer periods of idling.


A road diet along this corridor is not a viable approach at this time given the high traffic volumes on this roadway and would exacerbate traffic congestion. This project was identified as a recommendation in the City's Transportation Master Plan to improve congestion from Level of Service (LOS) "F" to "D" in the AM Peak hour and LOS "E" to "D" in the PM Peak hour in 2040. The data from the traffic model analysis supports widening eastbound Liberia Avenue between Route 28 and Euclid Avenue. This project will also include pedestrian enhancements such as wider sidewalks, street furniture, street trees, crosswalks, and bus stop improvements.

Dean Drive Widening

The current two-lane typical section of Dean Drive is not designed to modern standards. The purpose of this project is to upgrade Dean Drive to current design standards and not to add additional lanes. Bike lanes and sidewalks will also be installed as part of this project to ensure proper accommodations and access for bicycles and pedestrians.

Thank you for providing the TPB Virginia member agencies an opportunity to offer responses to public comments. Representatives from VDOT and Virginia localities will be available to follow-up as needed with any additional information.

Sincerely,



Bill Cuttler, P.E.
Northern Virginia District Engineer

Cc: Ms. Maria Sinner, P.E., VDOT-NoVA
Mr. Amir Shahpar, P.E., VDOT-NoVA
Glen Warren, MWAA
Malcolm Watson, Fairfax County
Rob Donaldson, Loudoun County
Meagan Landis, Prince William County
Brian Leckie, City of Manassas