



## Virginia's Highway Safety Action Plans

**MWCOG Transportation Safety Subcommittee**

**June 23, 2008**

# Virginia's Strategic Highway Safety Plan

- [www.VirginiaDOT.org](http://www.VirginiaDOT.org)  
Search "Safety Plan"
- Approved in 2006
- Implementing Actions through 2010
- **Goal:** To save 100 lives and prevent 4,000 injuries in 2010



# Key Engineering Action Plan Elements

- Improve traffic records to be more accurate and timely
- Incorporate Transportation Safety Planning into all levels of government
- Intersection Safety
  - Congested Areas
  - All users - Bicycle and Pedestrian
- Roadway Departures
  - Keep drivers on the roadway
  - Minimize consequences when they leave

# Commissioner Safety Initiatives

- Public Awareness
- Program Investment
- Accountability
- Legislative Proposals



**Today's Focus**

# Joint Communications Campaign

**Are you Virginia's  
next traffic fatality?**

**Buckle up • Avoid distractions • Share the road  
Drive drua & alcohol free • Obey speed limit**

**VDOT** Virginia Department  
of Transportation



**DMV**  
www.dmvNow.com  
Virginia Highway Safety Office



Consider joining Virginia's Highway Safety Challenge...

# Joint Safety Website for Virginia



A partnership between:

- Virginia Department of Transportation
- Virginia State Police
- Virginia Department of Motor Vehicles

Home

Contact Us

Our Mission

Publications and Resources

Links

Get Involved



Are you Virginia's next traffic fatality?

- Buckle up
- Avoid distractions
- Share the road
- Drive drug & alcohol free
- Obey speed limits



Traffic fatalities on Virginia's highways on Nov. 4, 2007:  
Preliminary data from the Virginia State Police



[About these numbers](#)

Traffic fatalities on Virginia's highways since Jan. 1, 2007:



Traffic fatalities at this time last year: 803

# Interstate Enforcement & Emergency Response

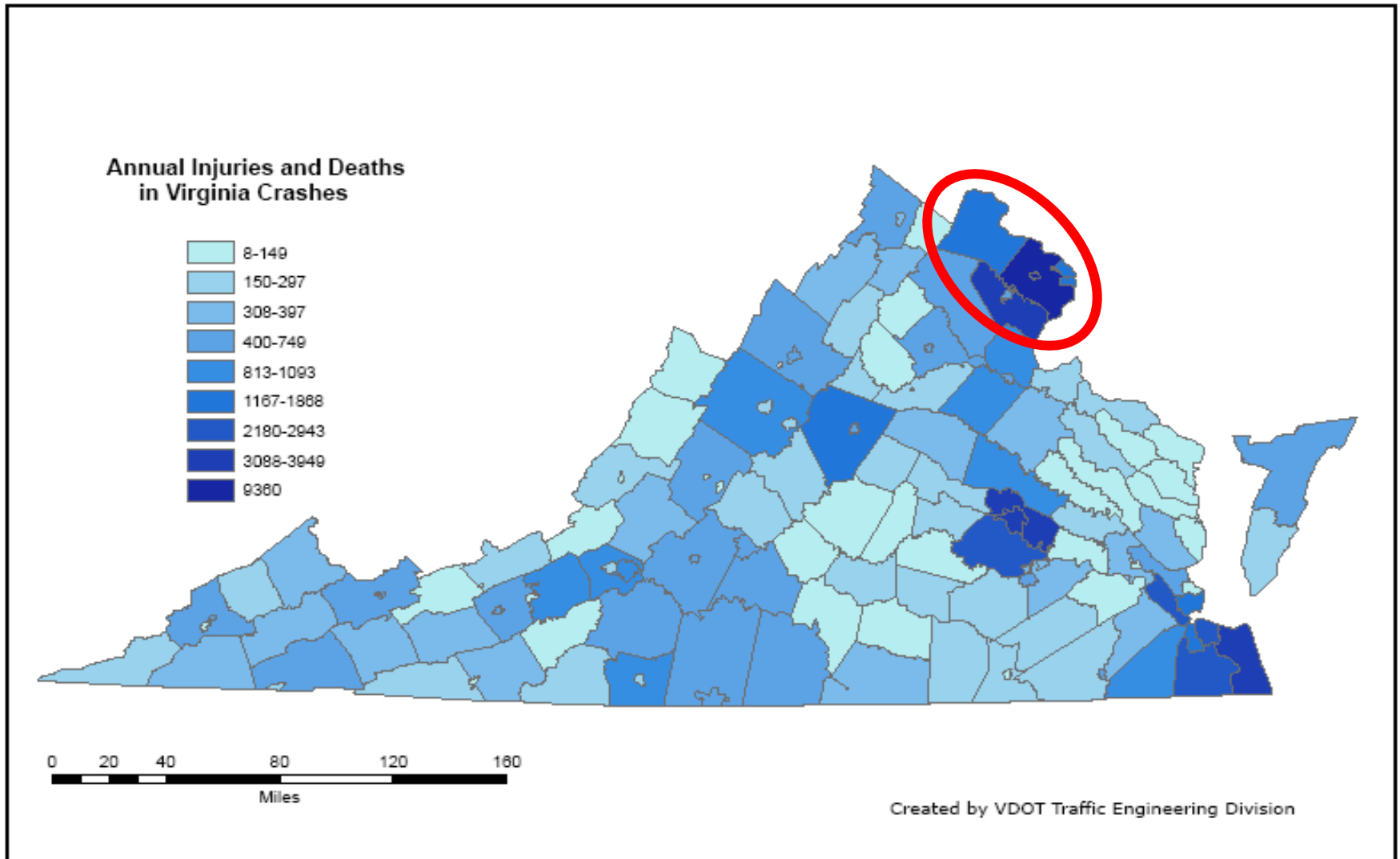
## 3 year injuries and deaths per mile

### Legend

- 5 Mile Marker
- Division 7 Interstate Deaths and Injuries per mile\*
  - 237 - 318 (<1.0%)
  - 180 - 236 (1.0%-5.0%)
  - 128 - 159 (5.1%-15.0%)
  - 103 - 127 (15.1-25.0%)
  - 1 - 102 (>25.0%)
- Interstates
- Virginia State Police Divisions
- Virginia Major Water Bodies
- Urbanized Area
- Virginia MPO Study Area Boundary
- Virginia Jurisdictions



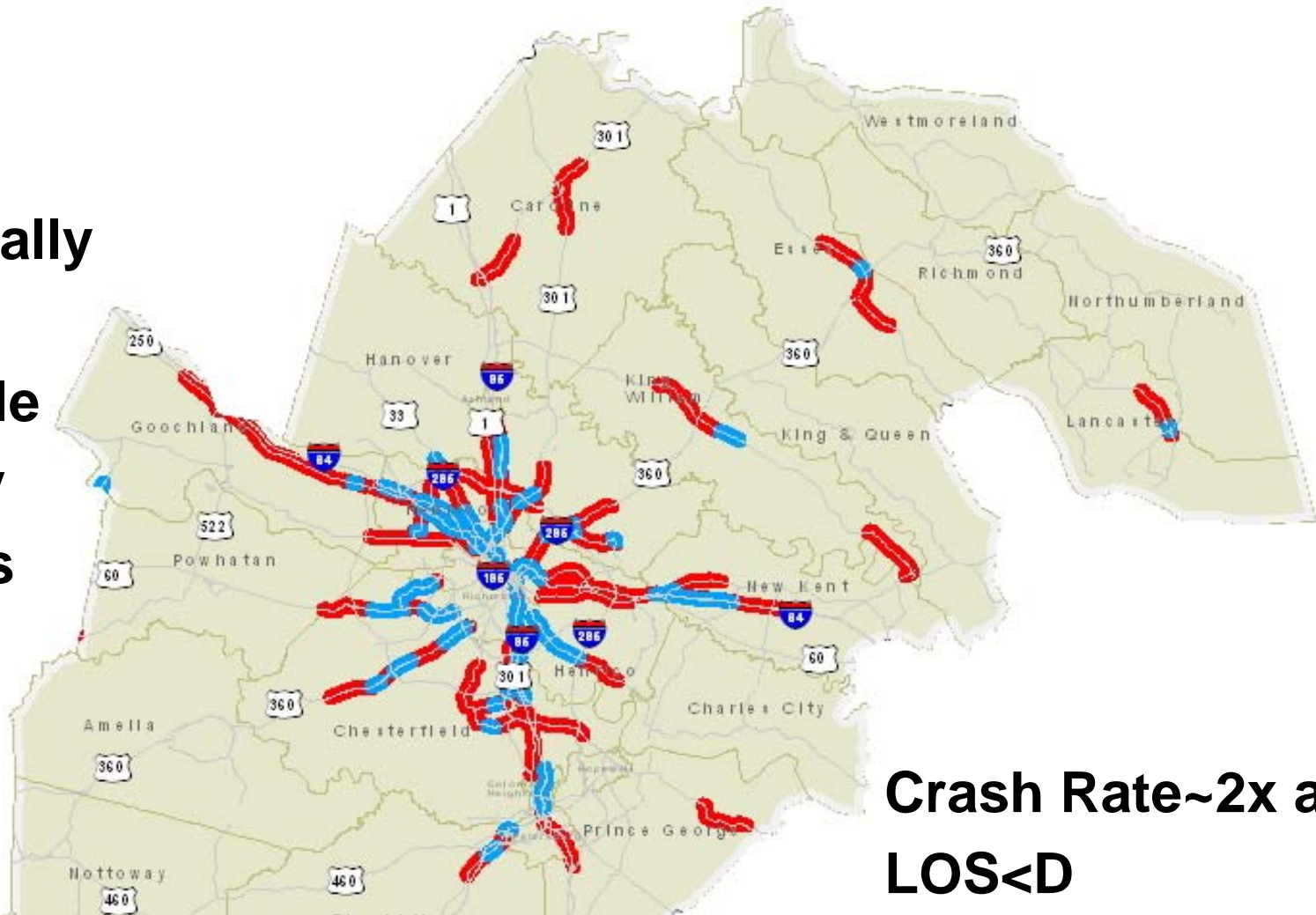
# Program Investment based on Deaths & Injuries by Jurisdiction





# Corridors with High Crash Rates (Red) and Congestion (Blue) for STARS

**S**trategically  
**T**argeted  
**A**ffordable  
**R**oadway  
**S**olutions



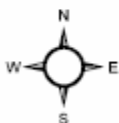
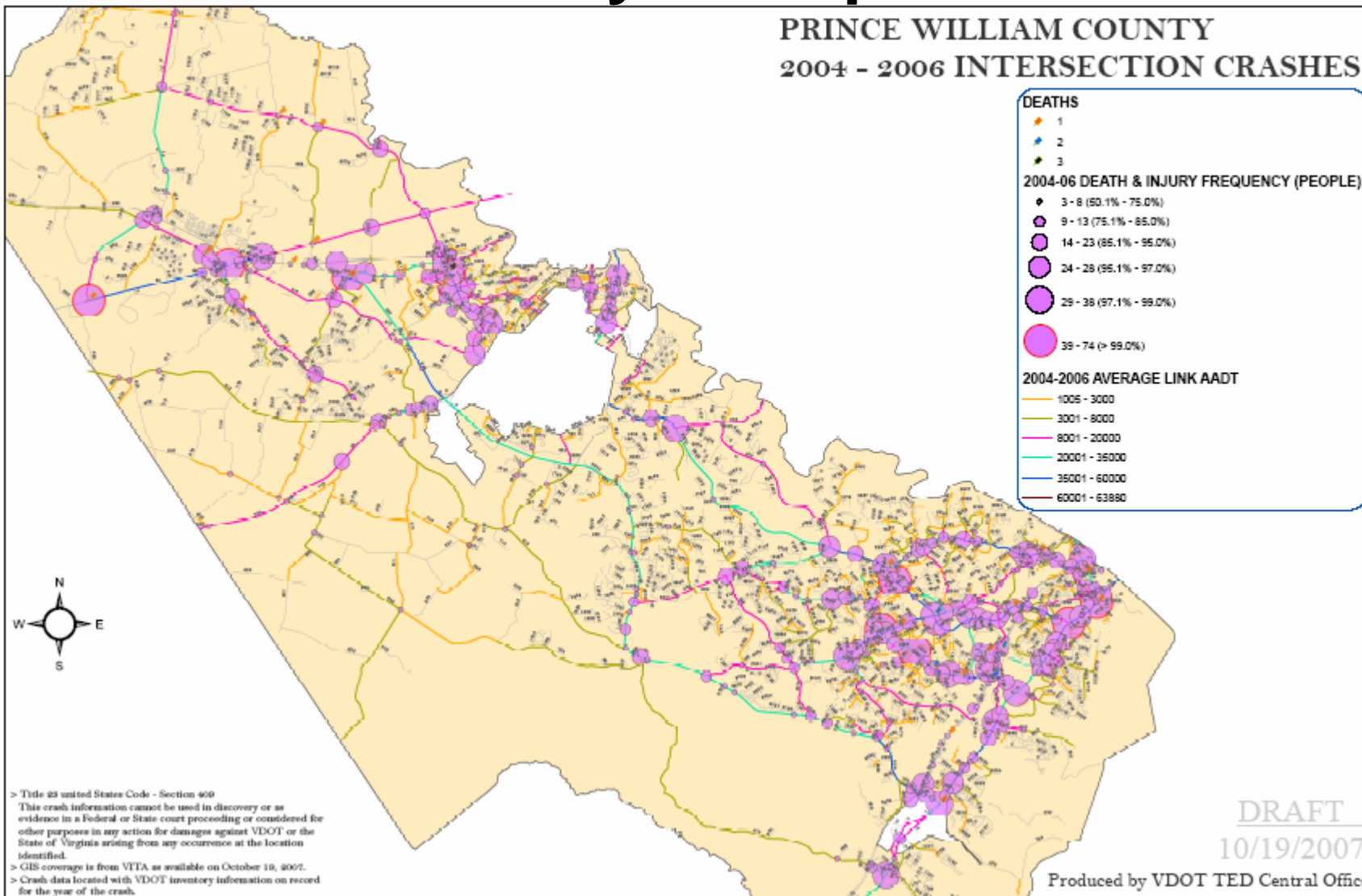
**Crash Rate ~2x avg**  
**LOS < D**



# Safety Planning

## Identify Hot Spots

### PRINCE WILLIAM COUNTY 2004 - 2006 INTERSECTION CRASHES



> Title 28 United States Code - Section 409  
 This crash information cannot be used in discovery or as evidence in a Federal or State court proceeding or considered for other purposes in any action for damages against VDOT or the State of Virginia arising from any occurrence at the location identified.  
 > GIS coverage is from VITA as available on October 19, 2007.  
 > Crash data located with VDOT inventory information on record for the year of the crash.

DRAFT  
10/19/2007

Produced by VDOT TED Central Office

# Intersection Crash Deaths and Injuries Ranked for STARs + Enforce

**Legend**

**Intersection Crashes between 2004 - 2006**

**Total Fatalities**

- 1
- 2
- 3

**Total Fatalities & Injuries**

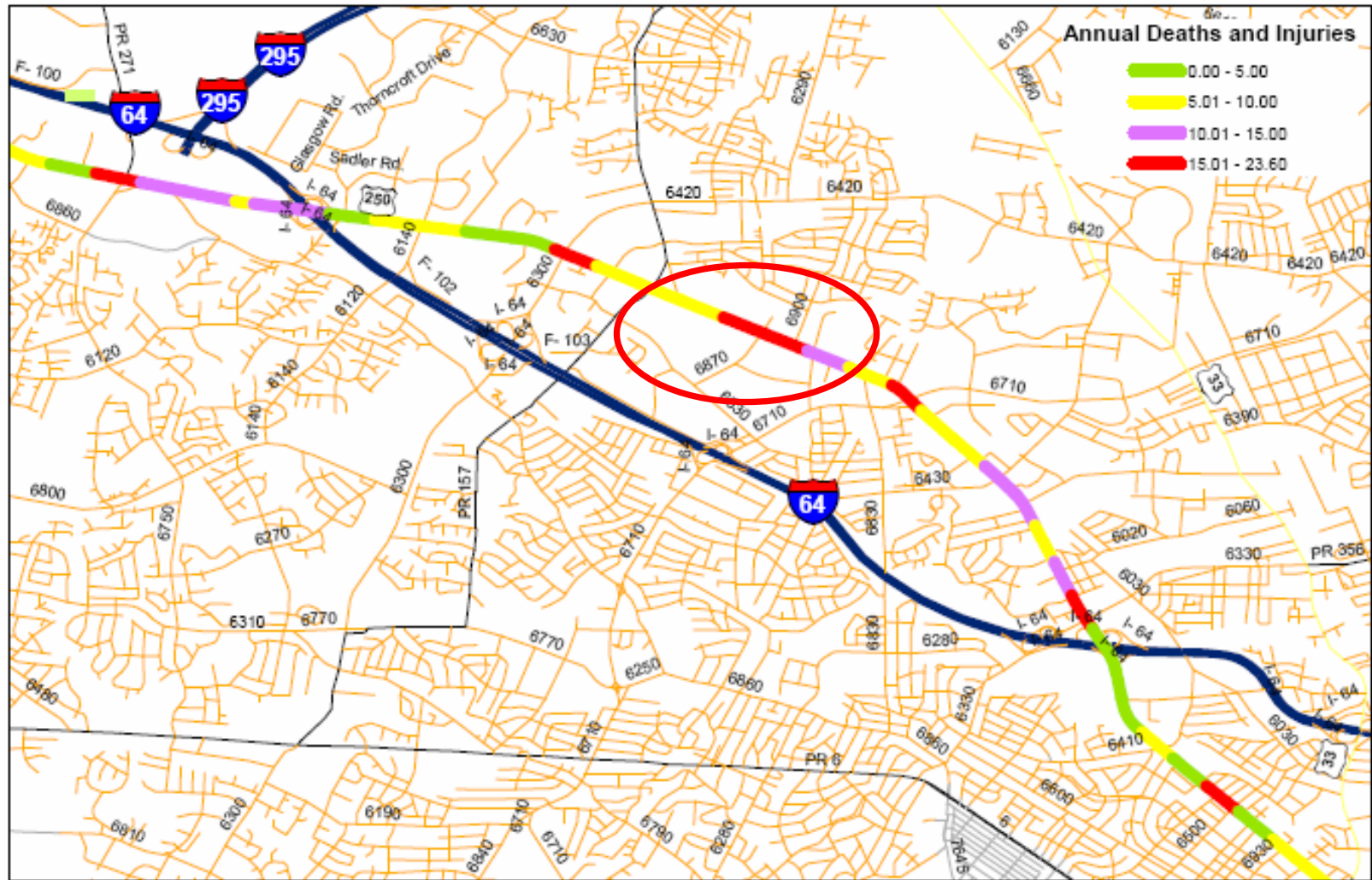
- 3 - 8 (75%)
- 9 - 12 (15% - 25%)
- 13 - 20 (5% - 15%)
- 21 - 38 (1% - 5%)
- 39 - 57 (>1%)

Interstate  
 Primary  
 Other  
 Highway Safety Corridors with LOS D,E, & F  
 Highway Safety Corridors  
 Systems Operations Regions  
 Virginia Jurisdictions  
 Virginia Major Water Bodies  
 Virginia Jurisdictions



# Map Critical Roadway Sections based on Density

US 250 Broad Street Annual Deaths and Injuries per Quarter Mile per Year (2002-06 Average)



# Detailed Crash Analysis & Roadway Safety Assessments

- Conduct crash analysis and Roadway Safety Assessments on the critical locations following VDOT's guidelines
- Identify a range of short, medium and long term safety countermeasures

# Improving Safety Data in Virginia

