

Sustainable Regional Planning



HUD Sustainable Communities Regional Planning Grant

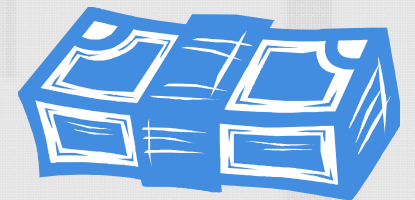
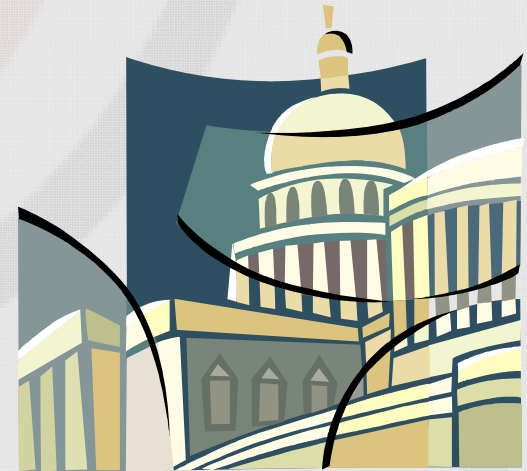
Metropolitan Washington Council of Governments

Today's Agenda:

- **Background & Program Goals**
- **Activities**
- **Conceptual Project Approach**
- **Next Steps**

HUD Sustainable Regional Planning Grant

- **Congress authorized Sustainable Communities Initiative to improve integrated regional planning efforts**
- **Grants of up to \$5,000,000 are available to help complete a Regional Plan for Sustainable Development**
- **Grant program is highly competitive - more metropolitan areas applying for grants than there are funds available**



HUD Sustainable Regional Planning Grant

Purpose:

Support planning efforts to create a **Regional Plan for Sustainable Development** that integrates:

- Housing
- Land use
- Economic/workforce development
- Transportation
- Infrastructure investments



HUD Sustainable Regional Planning Grant

Consider the following interdependent challenges:

- Economic competitiveness and revitalization;
- Social equity, inclusion, and access to opportunity;
- Energy use and climate change;
- Public health and environmental impact



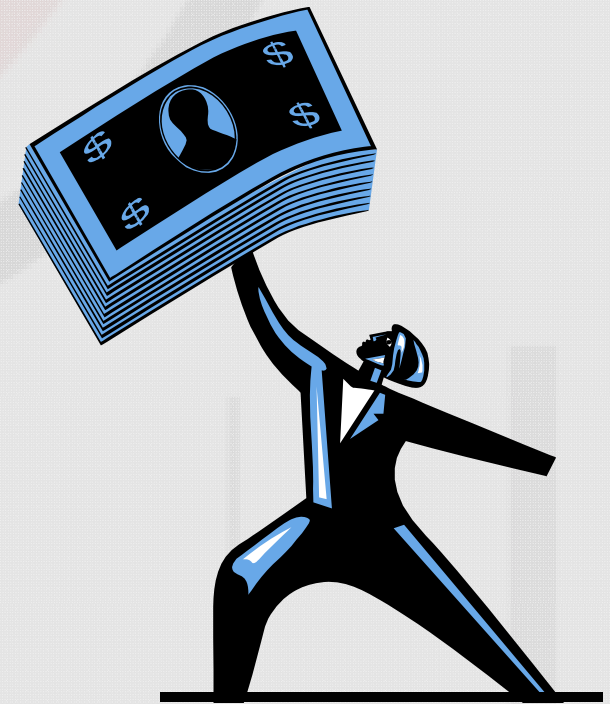
HUD Sustainable Regional Planning Grant

Two requirements:

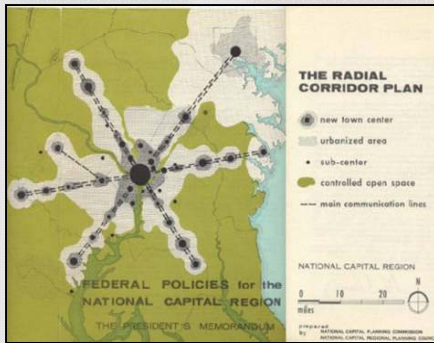
- Formation of a multi-jurisdictional consortium including the COG, MPO, local jurisdictions representing at least 50 percent of the metropolitan area population, and at least one non-profit or educational institution
- Consortium must provide a minimum of a 20 percent funding match in the form of cash or in-kind contributions

Benefits: Preferred Sustainability Status

- Applicants will be scored by HUD, for Preferred Sustainability Status, signifying they are ready to advance sustainable regional planning
- Applicants with integrated Regional Plan will score points for future federal funding from DOT, HUD, and EPA



Funding Categories



Category 1

Regional plans for sustainable development



Category 2

Fine Tune Regional Vision or Plan & Execution Plans

Application Activities

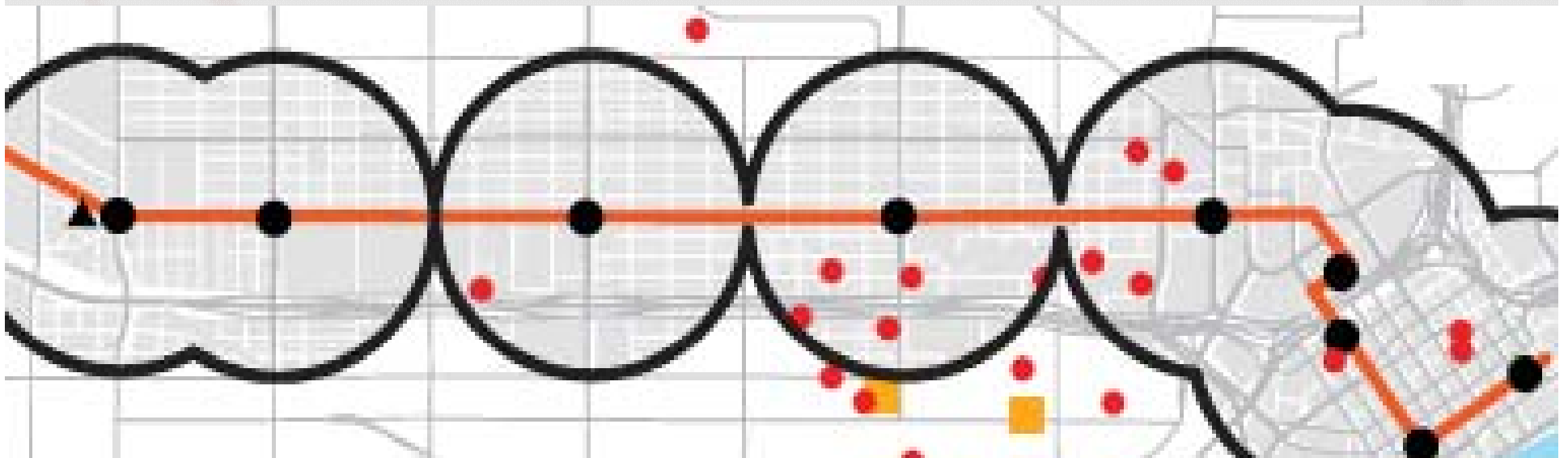
- **Intergovernmental Agreements**
- **Develop a Regional Plan for Sustainable Development (required)**
 - **Housing Plan**
 - **Fair Housing Analysis**
 - **Transportation Planning**
 - **Water Infrastructure**
 - **Environmental Planning**
 - **Economic Development Planning**
 - **Scenario Planning**
 - **Climate Impact Assessment**

(continued)

Application Activities

- **Identify Long-Term Policies**
- **Align Infrastructure Investments**
- **Ensure Public Decision-Making through meaningful resident participation**
- **Identify Measures to Track Progress**
- **Strengthen Management**

Complete Communities in Transit Corridors



Regional Challenge

- Spatial shift in where people want to live and how they get around
- Currently experiencing and expect more robust growth in the region's core markets around transit and walkable communities
- This new growth threatens to displace long-time residents and businesses
- Affordability and Accessibility Tradeoff: *Move away from transit or fight to stay near transit*

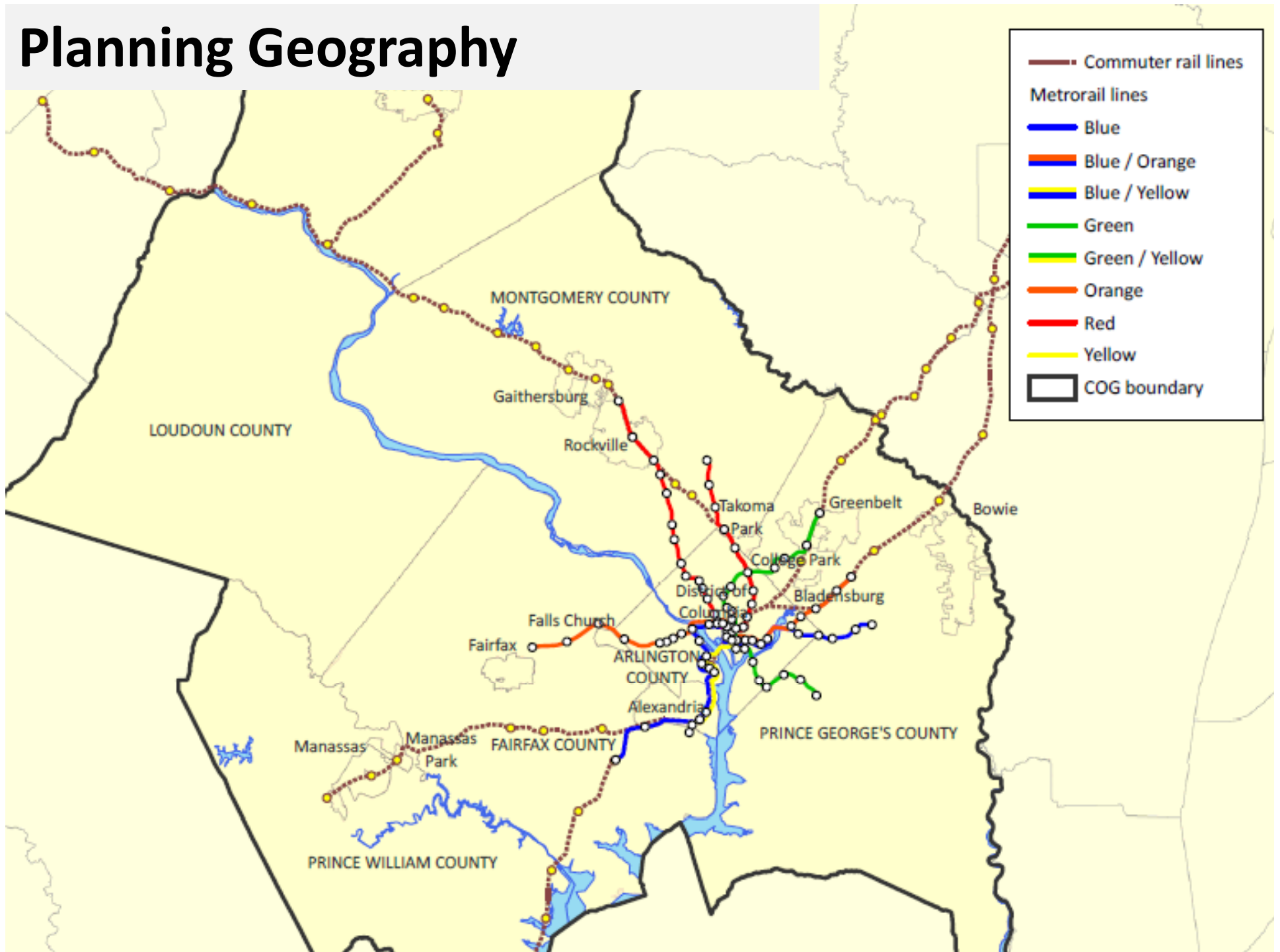
How to Address This Challenge

- 1) Plan to channel growth around our transit investments and create Complete Communities
- 2) Get in front of this trend before development pressures around our transit stations force low-income families to move away from transit

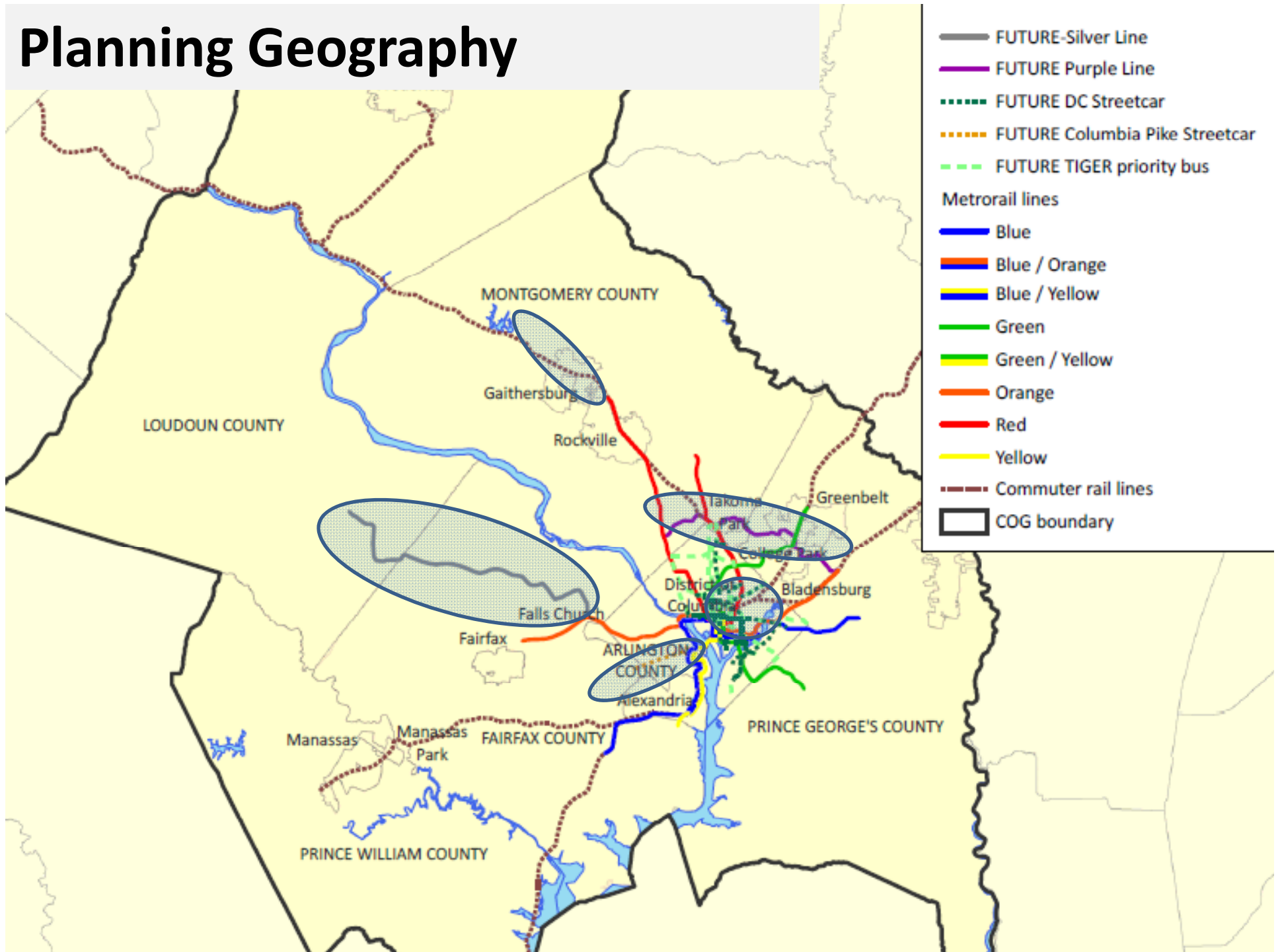
Project Approach

- **Focus on Equitable TOD**
- **Comprehensive**
 - **Environment**
 - **Economy**
 - **Equity**
- **Planning Geography**
 - **Commuter Rail Network**
 - **Metrorail Network**
 - **New Transit Lines (*limited to those in the CLRP*)**
 - **TIGER Priority Bus Network**

Planning Geography

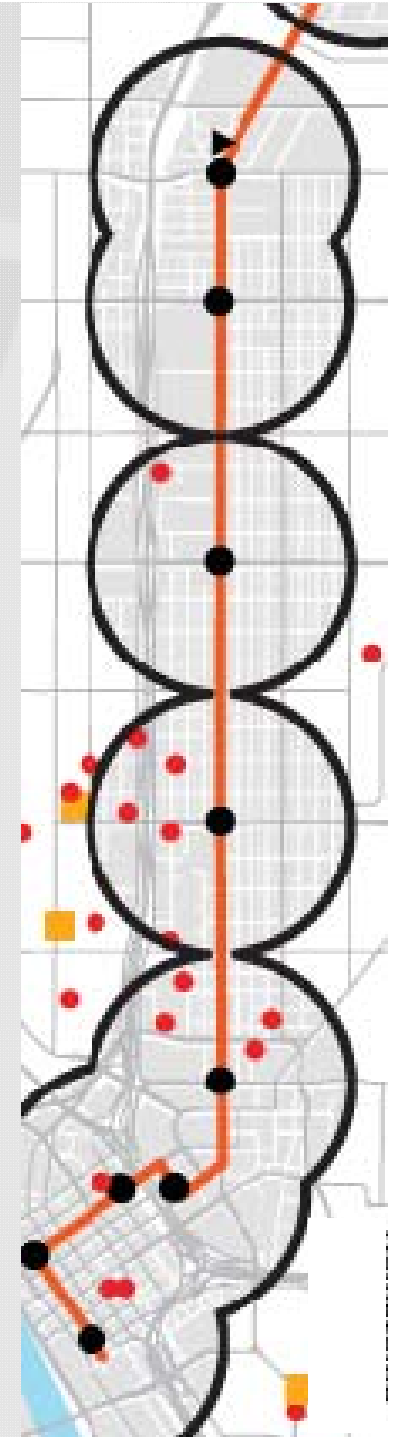


Planning Geography



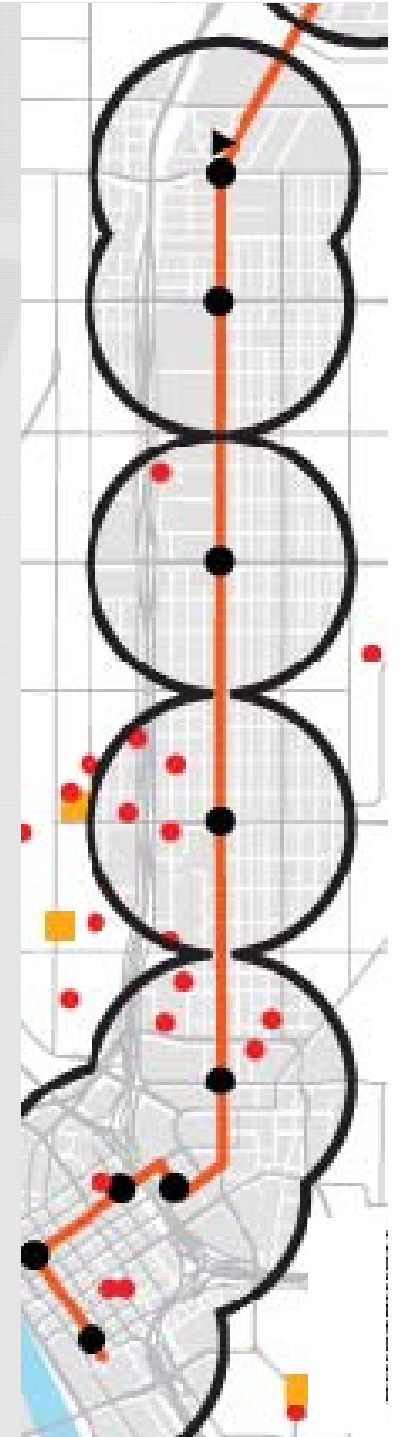
Activities Under Consideration

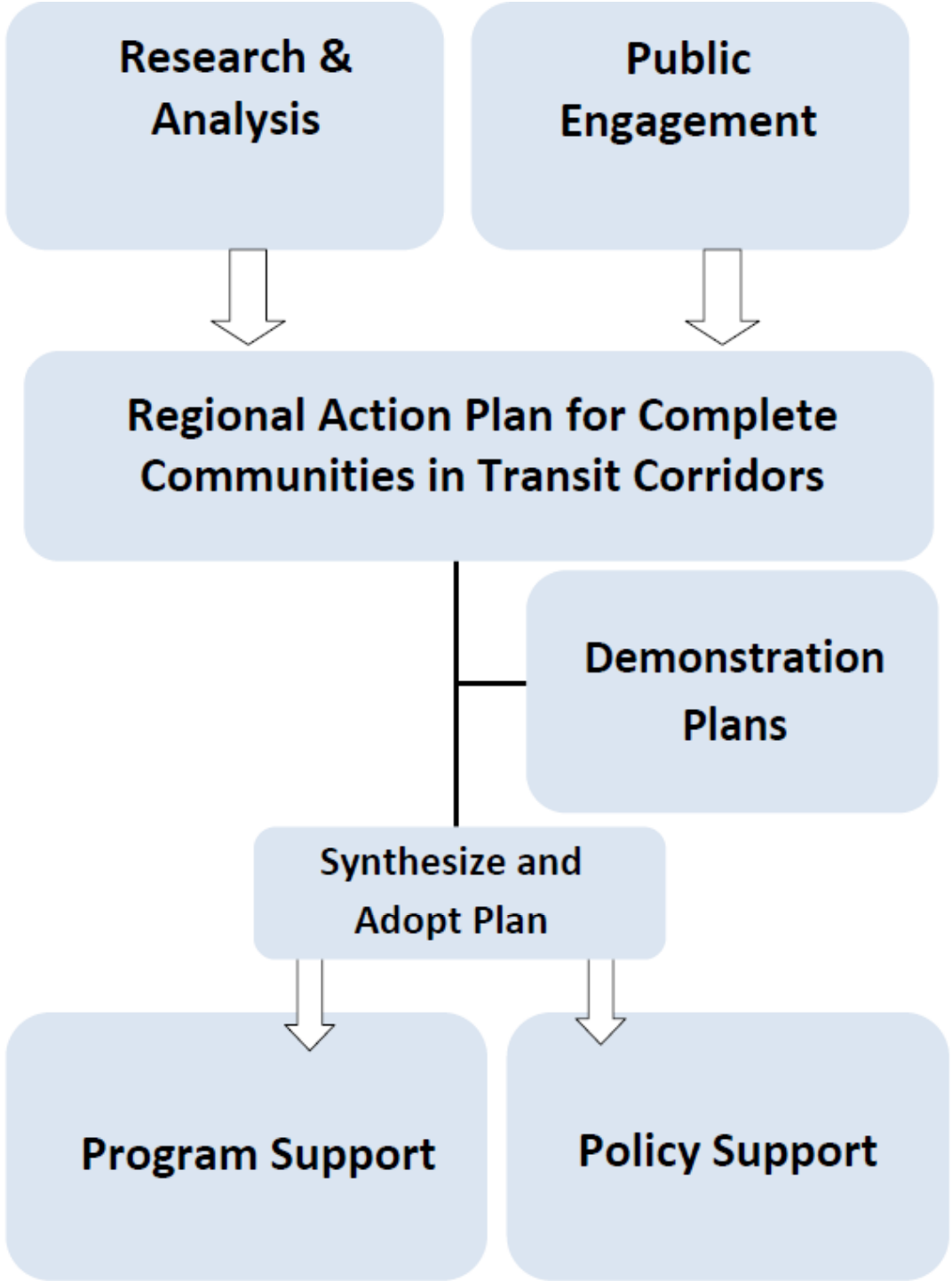
- Establish an Equity Network to facilitate broad participation by residents and community groups
- Research and Analysis
- Action Plan for Transit Corridors to identify Complete Community Priorities (*equity, environment and economy*)



Activities Under Consideration

- Demonstration Plans for planned and existing transit corridors
- Launch new or existing Tools (e.g. GreenPATH)
- Identify policy, administrative, regulatory changes (i.e. inclusionary zoning, capital improvements,





Next Steps

- Engage Region Forward Coalition to formalize consortium and partnerships
- Develop work program, budget and timeline
- Identify local match and in-kind contributions