

2024-2025 DISTRICT SNOW TEAM

**DISTRICT
SNOW
TEAM**

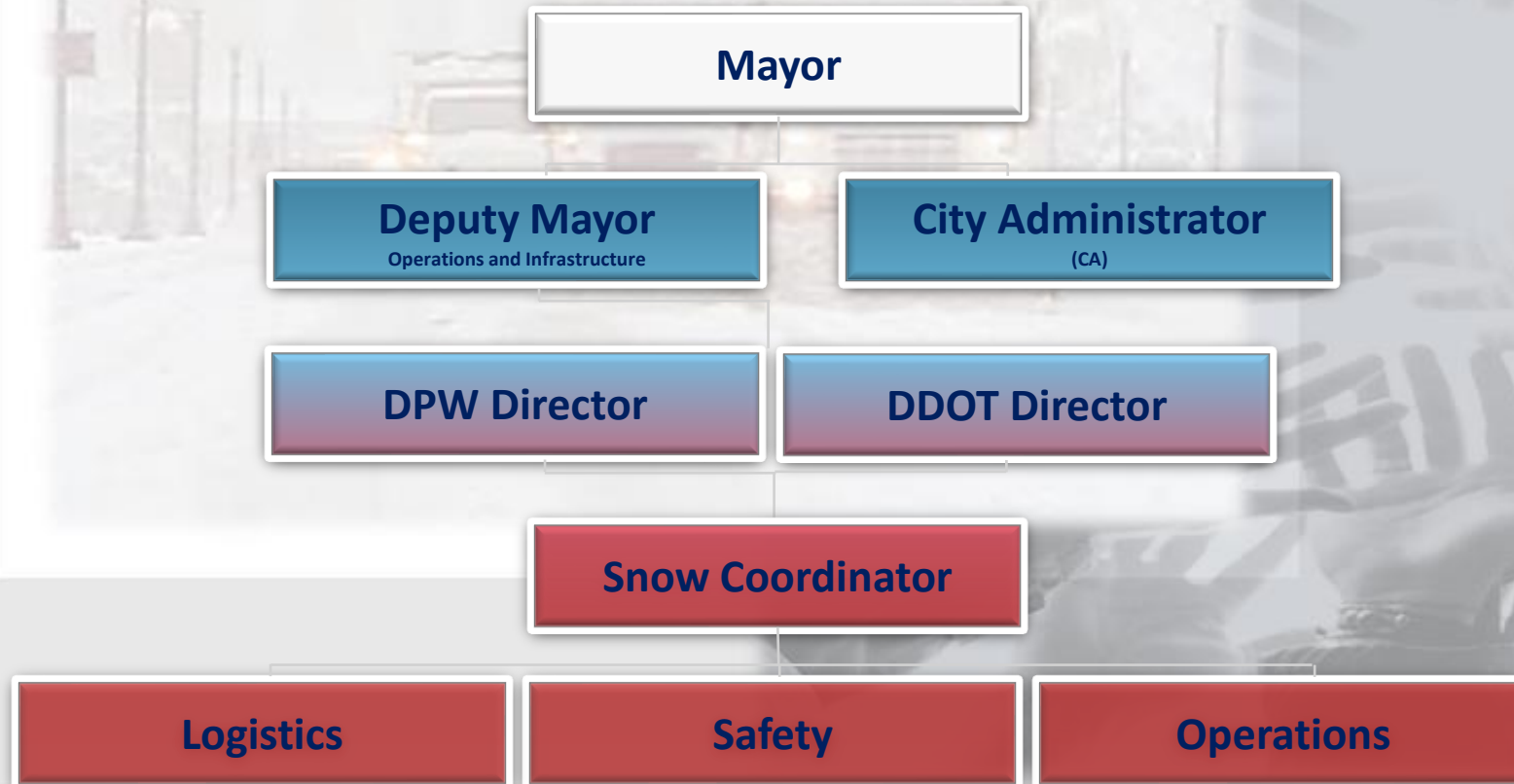
**DISTRICT
SNOW
TEAM**

**Metropolitan Washington Council of Governments
COG Winter Weather Briefing 2024
Thursday, October 31, 2024/2:30 pm – 4:30 pm**

2024-2025 DISTRICT SNOW TEAM

**DISTRICT
SNOW
TEAM**

Incident Command Structure (ICS)



2024-2025 DISTRICT SNOW TEAM

**DISTRICT
SNOW
TEAM**

DPW leads the District Snow Team with support from the **District Department of Transportation (DDOT)** for clearing our streets of snow and ice. We also receive support from multiple District government agencies, including the:

- **Department of General Services (DGS)**, which clears snow/ice from around municipal buildings;
- **Homeland Security and Emergency Management Agency (HSEMA)**, which provides coordinative activities for DC government agencies responding to winter storms; and
- **Serve DC**, which coordinates volunteer snow shoveling services to homeowners who are seniors and/or living with a disability.

2024-2025 DISTRICT SNOW TEAM

**DISTRICT
SNOW
TEAM**

Snow Performance Measures – Penguin Chart

Storm Type	Accumulation	Major Streets		Residential Streets	
		Time from storm end	Percent of streets passable	Time from storm end	Percent of streets passable
Freezing Rain	Coating	12 hours	85%	12 hours	85%
Snow	0 to 2 inches	4 hours	85%	8 hours	85%
	2 to 4 inches	6 hours	85%	12 hours	85%
	4 to 8 inches	12 hours	85%	24 hours	85%
	8 to 12 inches	18 hours	85%	36 hours	85%
	12 to 18 inches	36 hours	75%	48 hours	75%
	over 18 inches	36 hours	75%	60 hours	75%

- Restore our streets to:
 - Ensure safe passage in residential and commercial areas
- Reopen government, schools, businesses, tourist sites, restaurants

2024-2025 DISTRICT SNOW TEAM

**DISTRICT
SNOW
TEAM**



**SNOW
COMMAND
CENTER**

2024-2025 DISTRICT SNOW TEAM

**DISTRICT
SNOW
TEAM**

DC LANE MILE TOTALS	Total Travel Lane Miles	2328.40
	Total Ramp Lane Miles	59.60
	Total Service Road Lane Miles	10.50

2024-2025 DISTRICT SNOW TEAM

**DISTRICT
SNOW
TEAM**

Prowl

HP 30-35

LP 0

Routes Serviced:
NHS, Bridges,
Service Roads

Partial

HP 43

LP30

Routes Serviced:
DPW: All HP and
2-3 LP routes as
the forecast
dictates

Full

HP 93

LP 76

Routes Serviced:
ALL Routes

Full

Augmented

HP
93+TBD

LP
76+TBD

Routes Serviced:
All Routes & based on
weather conditions,
some routes have
multiple trucks on HP
routes.

Snow Statistics: Mobilization

Legend
Heavy Plow- HP
Light Plow- LP

2024-2025 DISTRICT SNOW TEAM

**DISTRICT
SNOW
TEAM**



Equipment

- Ventrac SSD Sidewalk
- Ventrac 3400
- Xmark Broom



Bridge/Sidewalks

- DPW 79
- DDOT 79
- NPS 25



Bike Lanes

- 33 miles (protected)
- 76 miles (unprotected)

As of July 2023

**TOTAL
DISTRICT
SNOW
FLEET: 256**
Inc. Heavy and
Light Plows,
Loaders, Brine
Equipment, and
Bike Lane
Equipment

2024-2025 DISTRICT SNOW TEAM

**DISTRICT
SNOW
TEAM**

- NHS Snow Team uses contract plows
 - The team supervises/manages plows
 - DDOT staff does not drive the plows
 - SBM and DPW in-house staff drive their own plows, but not the NHS team
 - Team members are assigned to a route and given a crew of plows to clear it



2024-2025 DISTRICT SNOW TEAM

**DISTRICT
SNOW
TEAM**

DDOT READINESS: BRINE PROGRAM UPDATE

- Installation of new Brine Machine & (3) Storage Tanks at Farragut
- Delivery of 9,000 Gallons of Geo-melt for Brine Treatment Program
- Installation of (3) Henderson Pro Truck Fill Stations
- Brine sites: Farragut, S. Capitol and W Street



2024-2025 DISTRICT SNOW TEAM

**DISTRICT
SNOW
TEAM**

Snow Statistics: Staffing



**DPW
450**



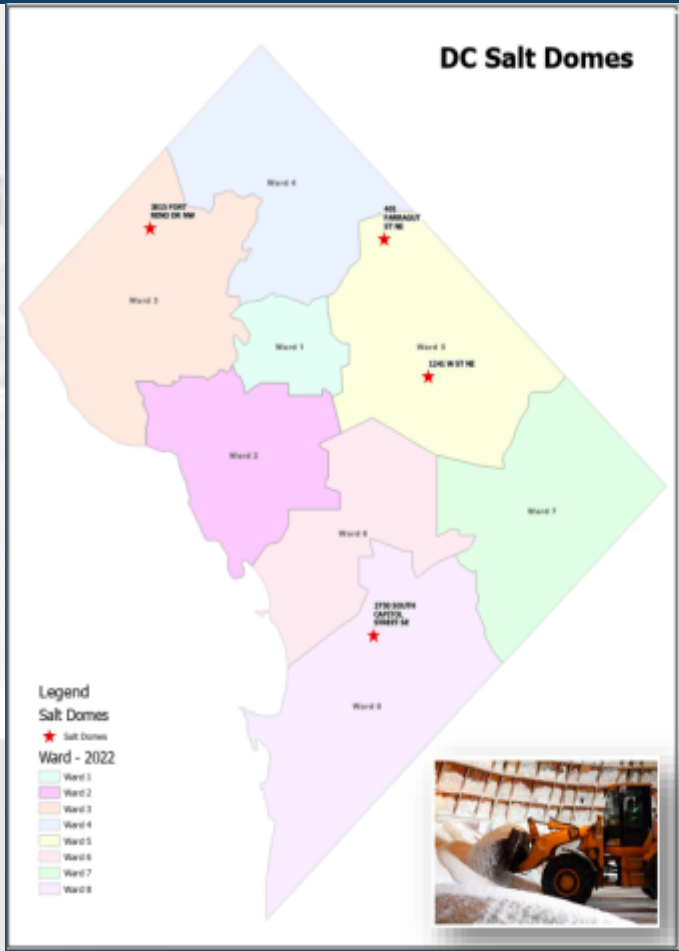
**DDOT
304**



**NHS
70**

2024-2025 DISTRICT SNOW TEAM

**DISTRICT
SNOW
TEAM**



Location	Salt Dome Capacity (in tons)
2750 South Capitol St SE	7500
3890 Fort Reno Drive NW	4500
414 Farragut St NE	18,000
Brentwood & W Street NE	12,000
Total	42,000

SALT DOMES

2024-2025 DISTRICT SNOW TEAM

**DISTRICT
SNOW
TEAM**

BATTLE RYTHM DRY RUN



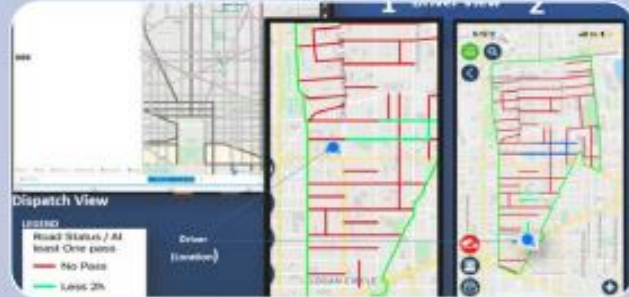
Weather Goal

6-8" by Friday with expectation of below freezing temp with an additional 2+ inches predicted for Saturday morning

**Snow
Mobilization
Week
Oct. 14-18
2024**

2024-2025 DISTRICT SNOW TEAM

**DISTRICT
SNOW
TEAM**



DC SNOW TEAM TECHNOLOGY

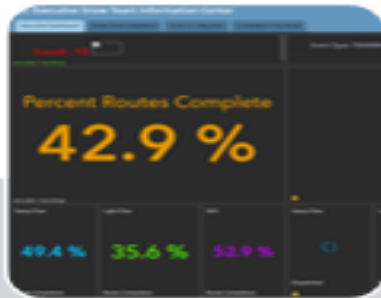
Geotab: Municipal Vehicles

Route Completion
Smart Spreaders (Muncie)

EV Streets: Contract Plow Vehicles

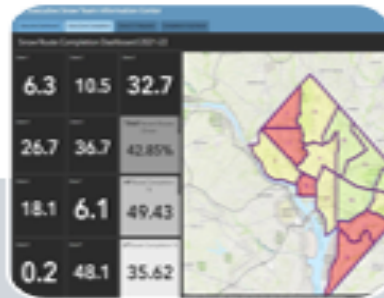
2024-2025 DISTRICT SNOW TEAM

**DISTRICT
SNOW
TEAM**



Executive Dashboard

- Data from Stormtrak and Geotab



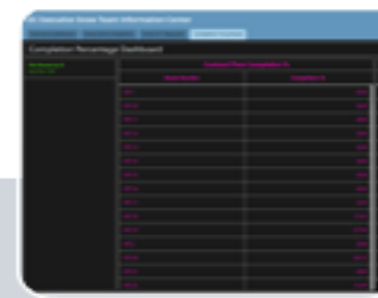
Snow Zone Completion

- Data from Geotab



Snow 311 Requests

- Data from OUC 311



Completion % by Route

- Data from EV Streets and Geotab

**DC
Executive
Snow Team
Information
Center**

2024-2025 DISTRICT SNOW TEAM

**DISTRICT
SNOW
TEAM**

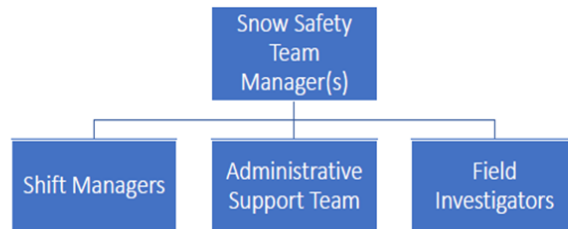


Shift Managers are responsible for ongoing team functions during a snow deployment – team briefings, monitoring incidents, accidents and crash investigations and communicating to the snow safety team manager(s).



DC Snow Safety Team

The DC Snow Safety Team is co-managed and staffed by DPW and DDOT.



Administrative Support manages team check in/check out, time keeping and payroll, monitors the snow safety hotline, provides dispatch of field investigators and handles all communications between the snow safety team and snow command.



Field Investigators perform reasonable suspicion, conduct direct observations, conduct incident, accident and crash investigations.



2024-2025 DISTRICT SNOW TEAM

**DISTRICT
SNOW
TEAM**

MATOC SWCWG Road Conditions Table

Transportation System Status Levels		Suggested terminology and PIO templates
<p>Road Condition 5: IMPASSABLE/ DANGEROUS/ TREACHEROUS</p> <p>Some roads could be temporarily impassable. This may be the result of severe weather (low visibility, etc.) or road conditions (drifting, excessive unplowed snow, glare, ice, accidents, stranded vehicles, etc.) Skeletal transit services. Limited above-ground rail service if more than 8" of accumulation. Lane drops in certain sections.</p>		<p>"treacherous", "impassable", "dangerous" <i>Be where you need to be by <time>.</i> <i>Get where you need to be before the weather gets bad.</i> <i>Stay where you are.</i></p>
<p>Road Condition 4: ICY/SNOW PACKED</p> <p>The pavement surface is covered with packed snow and/or ice. There may be loose snow on top of the icy or packed snow surface. Transit lifeline services only with significant delays for rail and bus. Refreeze possible. Lane drops in certain sections.</p>		<p>"unsafe", "impassable" "major delays" <i>Be where you need to be by <time>. Avoid or postpone travel for next <hours>.</i> <i>Stay at the office an extra <hour>, or leave early, to avoid travel during a winter storm.</i></p>
<p>Road Condition 3: SNOW AND/OR SLUSH COVERED</p> <p>The pavement surface has continuous stretches of packed snow with or without loose snow on top of the packed snow or ice. Core bus services only, delays in rail services. Lane drops on certain sections of roadways.</p>		<p>"caution", "passable" <i>Avoid being stranded at bus stops</i> <i>Avoid or postpone travel for next <hours>.</i> <i>Stay off the roads.</i> <i>Stay at the office an extra <hour>, or leave early, to avoid travel during a winter storm.</i></p>
<p>Road Condition 2: SNOW / SLUSH COVERED W/ WHEEL TRACKS EXPOSED</p> <p>Accumulations of loose snow or slush up to 2 inches are found on the pavement surface. Packed and bonded snow and ice are not present. Regular transit services with some minor exceptions and detours for buses. Drifting snow.</p>		<p>"passable" <i>Avoid discretionary travel. Road crews engaged in clearing activities.</i> <i>Curtail "elective" travel. Avoid unnecessary travel.</i></p>
<p>Road Condition 1: CLEAR WET/DRY</p> <p>Clear and wet/dry pavement surface is the general condition. There are occasional areas having snow or ice accumulations resulting in drifting, sheltering, cold spots, frozen melt-water, etc. Transit operations per schedules.</p>		<p>"passable"</p>

2024-2025 DISTRICT SNOW TEAM

**DISTRICT
SNOW
TEAM**

DISTRICT SNOW TEAM COMMUNICATIONS OBJECTIVES:

- Ensure accurate, timely, and effective communications that enhance public and situational awareness and engagement during the District's snow operations
- Foster community preparedness
- Emphasize the safety and well-being of District snow personnel and residents

2024-2025 DISTRICT SNOW TEAM

**DISTRICT
SNOW
TEAM**

BIDS

Business Improvement Districts will:

- Pre-treat handicapped ramps, bus stops, curbs and fire hydrants before snow falls
- Clear snow from sidewalks, bus stops and hydrants
- Check storefront and public space, especially of abandoned businesses

The District Snow Team:

- Clears streets within the BID areas

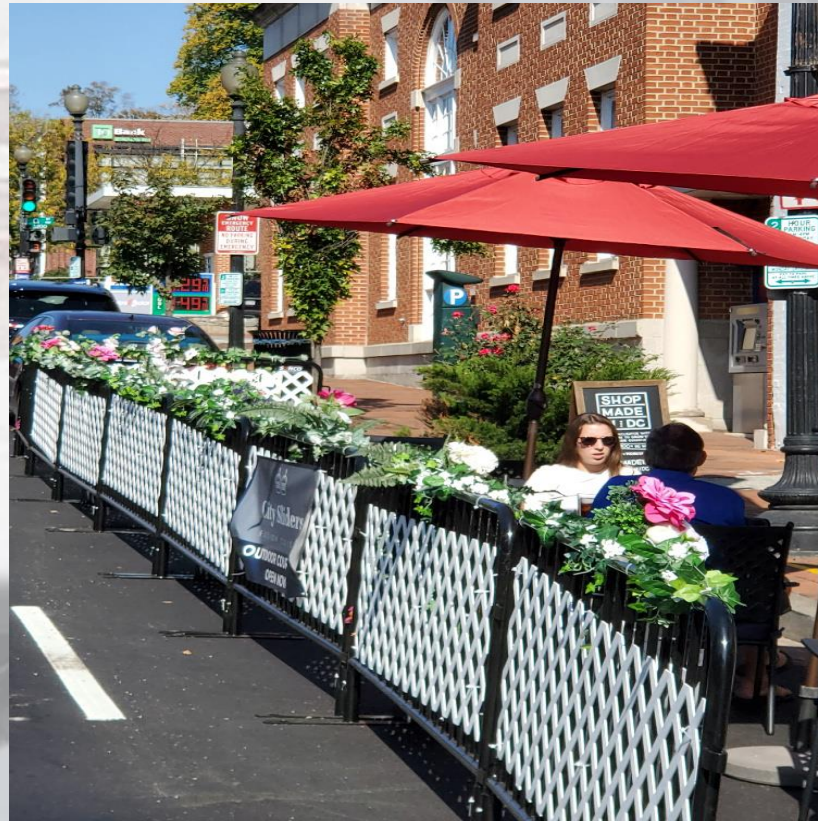
BUSINESS IMPROVEMENT DISTRICTS

2024-2025 DISTRICT SNOW TEAM

**DISTRICT
SNOW
TEAM**

Streateries

The District Snow Team is working with the Mayor's Office of Nightlife & Culture and the DC BID Council to ensure streets where Streateries are located are cleared of snow and ice.



2024-2025 DISTRICT SNOW TEAM

**DISTRICT
SNOW
TEAM**



**THE DISTRICT SNOW TEAM IS
*READY!***