



DC GIS Steering Committee Meeting

September 6, 2007

Barney Krucoff
GIS Director
Office of The Chief Technology Officer
Barney.Krucoff@dc.gov
202-727-9307



Agenda

- **Introductions**
- **DC GIS News** – Barney Krucoff
- **United States Geological Survey Grant**
 - Barney Krucoff, Roger Barlow, & Applied Geographics Inc.
- **Data Report** – Mario Field
- **Pictometry Upgrade** – Tim Abdella
- **Training Report** – Tim Abdella
- **DDOT Transportation Enterprise** – David Miller - *Canceled*



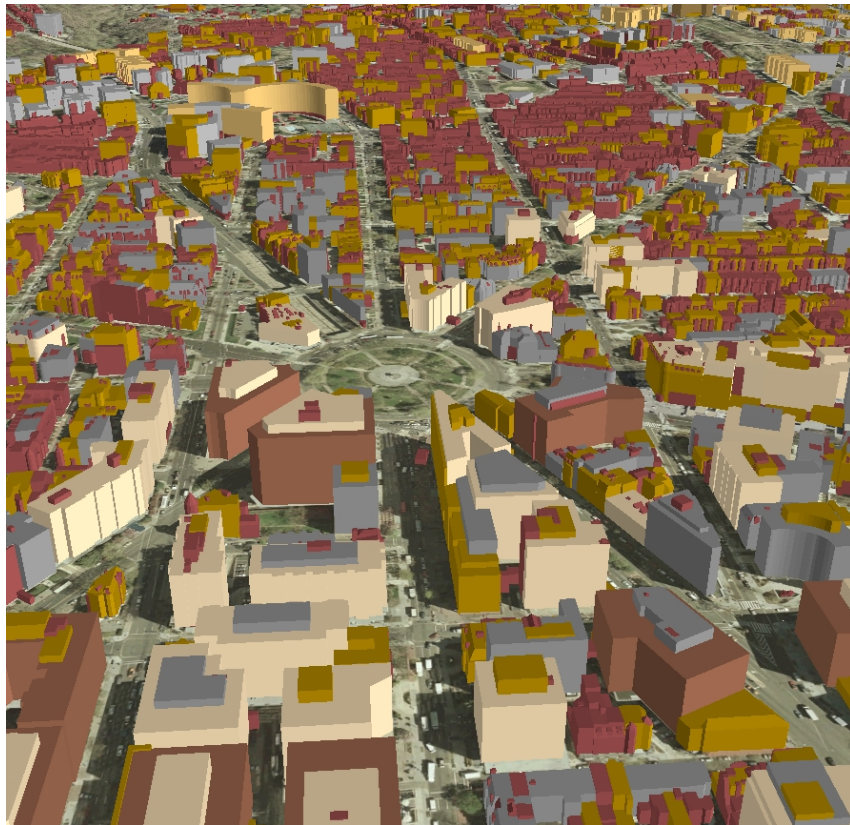
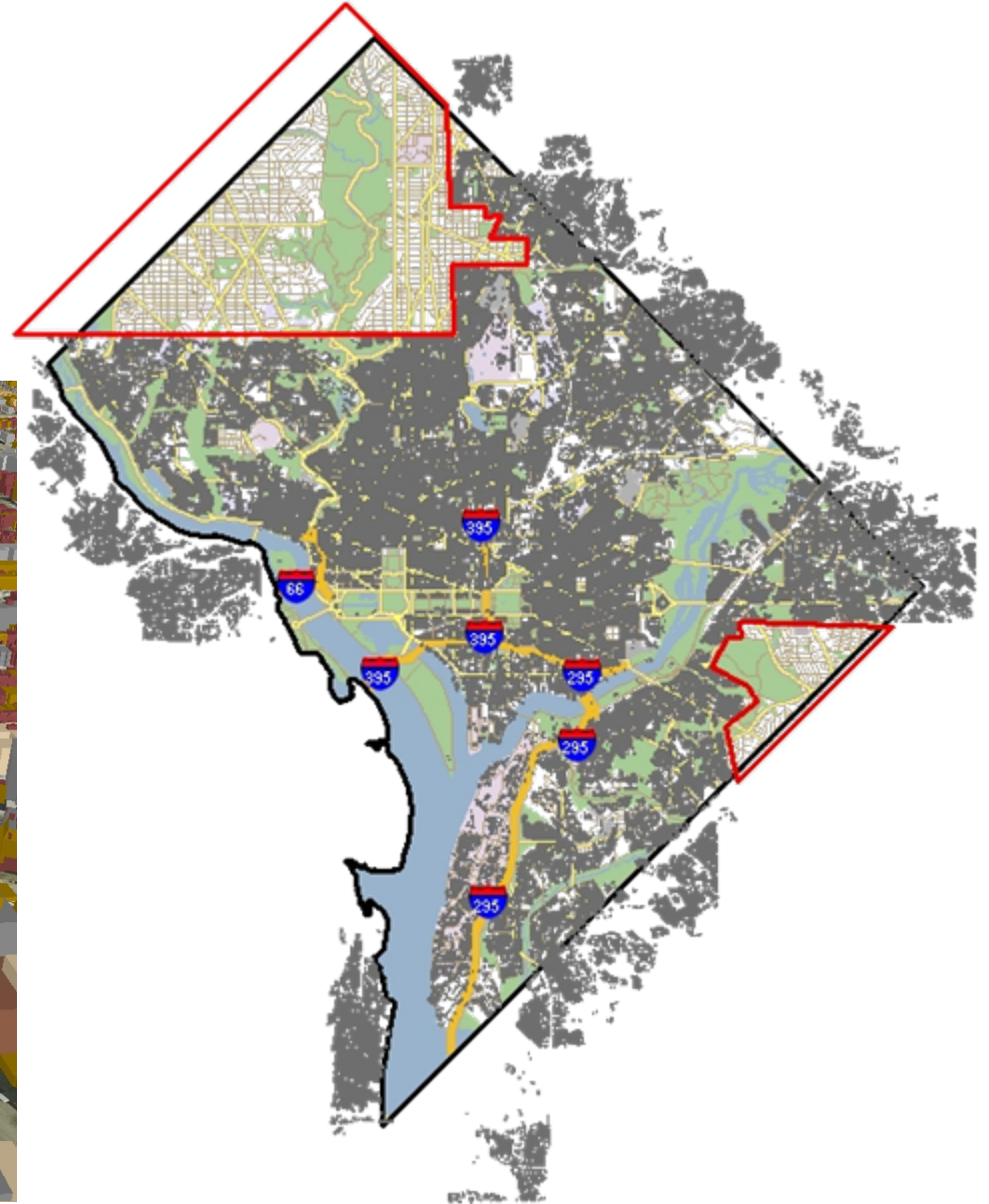
News Items

- ArcGIS 9.2 Status
 - Desktop GIS/Citrix upgraded
 - Database ready to go, but must be last
 - ArcIMS not ready to go
- Master Address Repository (MAR) wins Center for Digital Government G-to-G Award
- Google Earth and Maps now using DC GIS 2005 Orthoimagery
- Local Update of Census Addresses LUCA
 - Focus on units inside rental apartment buildings



News Items

- 3D Data Update





PSA 306 Is Now PSA 208

- Updated in DC GIS Central
 - PSA Boundaries
 - Police District Boundaries
 - ROCs (no change)
- Updated in Citywide Data Warehouse
 - Historic data
- Changing this weekend
 - MAR / Address points
 - DC Guide





New MAR Web Services

<http://10.2.11.29/newwebservices/locationverifier.aspx>

- **findAddFromSSL_new (Draft Data)**
Accepts square, suffix, lot; returns all AIDs associated with the SSL. This operation will be a replacement for the old findAddFromSSL operation in the future. The result is more accurate with the consideration of the many to many relationship between SSL and AID.
- **findOwnerFromSSL** Accepts square, suffix, lot; returns owner information associated with the SSL.
- **reverseGeocoding** Accepts Maryland State Plane (NAD 83) coordinates, finds MAR address/alias points within a radius (default of 100 meters) from these coordinates and returns the nearest five AIDs. The unit for the returned distance is in meters.
- **findSSLFromAID (Draft Data)**
Accepts an address id; returns all SSLs associated with the address id.
- **findAliasFromAID** Accepts address id; returns all Aliases associated with the address id.
- **submitAddress**
Submits addresses automatically (set with Verification=false), or submits addresses that are 'Valid But Not Verified' after verification (set with Verification=true). The default value of withVerification is true.
- **findUnitFromAID (Bad Data)**
Accepts address id; returns all Units associated with the address id.

DC GIS FY 2007 Goals

Organizational & Institutional

- DC GIS becomes one of tools the new administration uses to manage the city ●
- Garner support and budget to resume major data collection in FY 2008. ●

Development Team Goals

- DC Atlas All-In-One ●
- Additional DC GIS Tools ●
- Additional Web Services (w/ OP)
 - Thematic mapping attribute data generalization ●
 - More options for geocoding ●
 - Faster/Simpler Base Map Service ●
 - Vector Property Map data look up ●
 - Data feedback ●
- GIS added to at 3 more agency web sites ●

Customer Service & Training Team

- Add two new course
 - Working with addresses ●
 - GIS for Emergency Management ●
- Train 400 DC Employees ●
- Formalize tier 2 GIS help desk functions ●

System Team

- Improve database capacity/stability ●
- Smooth transition to ArcGIS 9.2 ●
- Establish ArcSDE replication with at least 2 agencies ●
- Improve development and staging environments, and development workflow. ●

Data Team

- Publish the Vector Property Map ●
- Develop and Publish 3D data ●
- Improve cooperation with USPS and Census on addressing ●
- DCRA assume Daily Master Address Repository Maintenance ●
- DCRA and OTR establish Vector Property Map Maintenance ●
- Add 20 new agency contributed layers ●

- | | |
|---|-----------------------|
| ● | Completed |
| ● | Underway |
| ● | Not even close |

DC GIS FY 2007 Supplemental Goals

Organizational & Institutional

- Improved working relationship with CDW ●
- Secure operating enhancement ●

Development Team Goals

- Metadata Server Portal Tool Kit ●
- Mayor's Transparency Web Site ●
- Improve EIC ●

Customer Service & Training Team

- 100 day project 3D GIS for International Conference of Shopping Centers ●

System Team

- Improve redundancy at HSEMA ●
- Additional Hardware ●

Data Team

- SSL/AID cross reference table ●
- Support Nuisance Properties Task Force ●

- | | |
|---|-----------------------|
| ● | Completed |
| ● | Underway |
| ● | Not even close |



FY 2008 Project Outlook

- Strategic and Business Plan Development
- Planimetric Update
- LUCA
- Vector Property Map - Public Lands
- DC GIS development and operations
- Mayor's Transparency Website
- DDOT Asset Collection
- Google Implementation
- Permitting and licensing support
- Mapping for Mobile Computing



United State Geological Survey Grant

- \$50,000 to update the DC GIS Strategic Plan and create a Business Plan.
- Goals
 - Find champions for geospatial development and coordination in the new administration.
 - Reform/revitalize DC GIS Governance
 - Reach beyond the District government to **new partners** in independent agencies, the Federal Government, Academia, and relevant Non-Profits
 - Demonstrate the **effectiveness of cooperation** with NSDI for the District
- Start in October 2007 finish in April 2008



DC GIS Data Report

Mario Field

Dr. Data



Updated DC GIS Data

- **Address Point/Address Alias**
- **Annotation**
- **Central Employment Area**
- **Comprehensive Plan Planning Area**
- **DC Net Site Type**
- **DC Net LIT Site**
- **DC Property**
- **Main Streets (reStoreDC)**
- **Orthophoto Raster Catalog (2007 Pictometry sector tile - 1 foot resolution)**
- **Owner Point**
- **Owner Polygons**
- **Police District**
- **Police Service Area**
- **Property Supplemental CAD Linework**
- **Public School**
- **Red Light Camera**
- **Sale Point**
- **Street Centerline**
- **Street Segment**
- **Tax Increment Financing Area**
- **Vector Property Map (Appropriations, Record and Tax Lots, Parcels, etc.)**
- **Zoning**



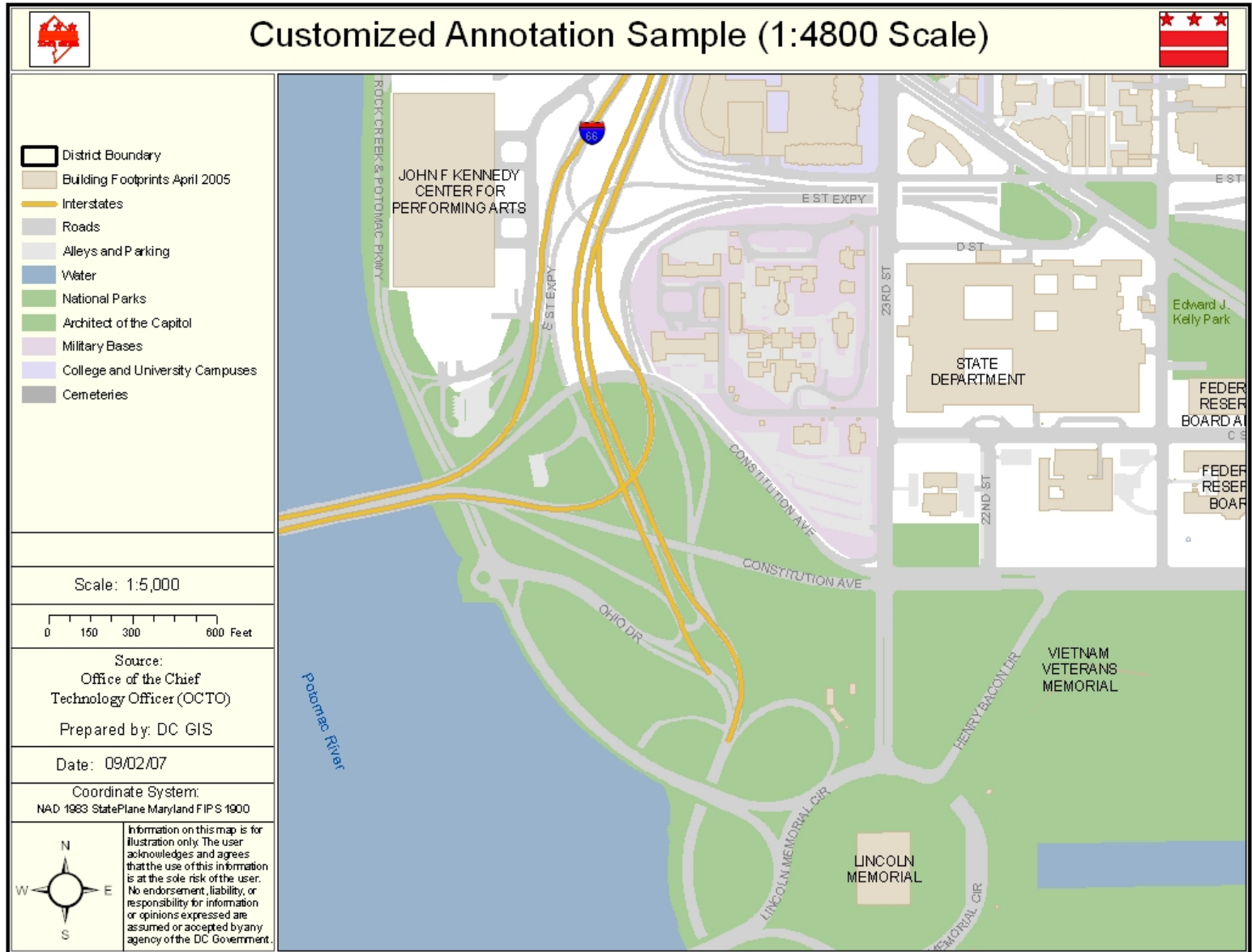
Current DC GIS Data Update

- **CAMA**
- **Charter School**
- **Community Residential Facility**
- **Emergency Shelter**
- **Intermediate Care Facility**
- **Library**
- **Satellite Image (GeoEye – July 2007)**
- **Tunnel**
- **Zoning**

– **September 2006 publication**



Customized Annotation





Customized Annotation

- **Layers**
 - **Address Alias**
 - **Cemetery**
 - **Hydrography**
 - **Neighborhood**
 - **Park**
 - **Square (not at 1:31680)**
 - **Street Centerline**
 - **University**
- **Scales**
 - **1:1200**
 - **1:4800**
 - **1:12000**
 - **1:31680**



Pictometry Library Update Demonstration

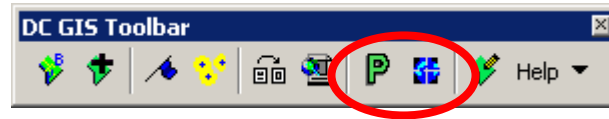
We will use a real users account and walk
through the process

Tim Abdella



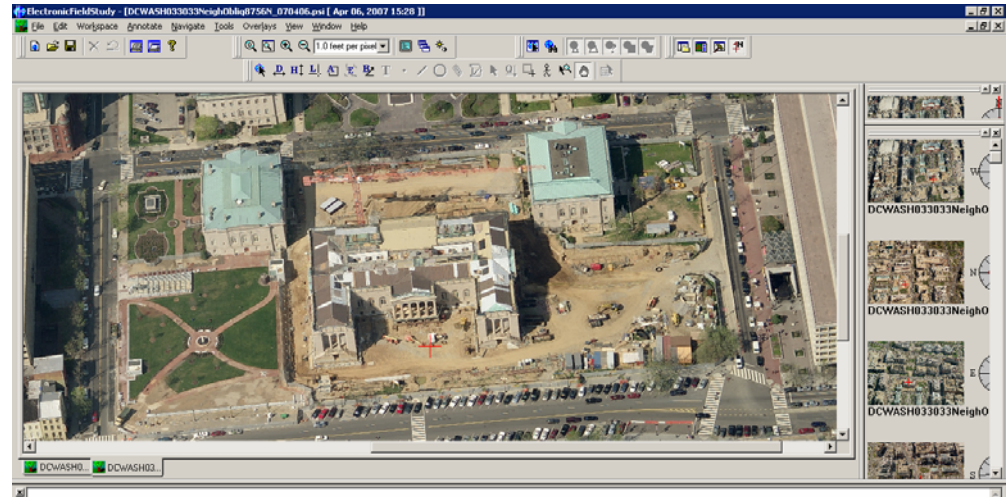
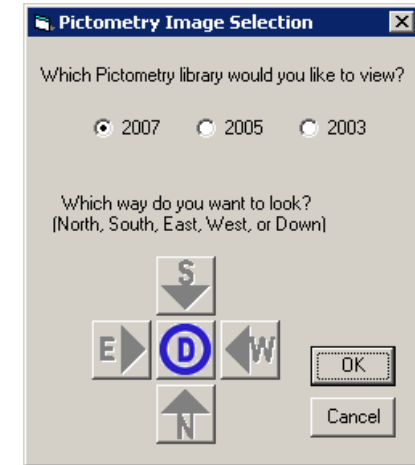
Pictometry 2007

- Available from DC GIS Toolbar



- Available In EFS

– Must reset license



- Available as Raster Catalog in DCGISCENTRAL



DC GIS Training Report

Tim Abdella
GeoSpatial Education Director





Course material Update

- All Class material updated to reflect ArcGIS 9.2
- Available for download from website:
 - Dcgis.in.dc.gov → Training → DC Virtual Campus

dcgis: DC Virtual Campus 2 - Windows Internet Explorer
http://www.dcgis.in.dc.gov/dcgis/cwp/view.asp?A=1263&Q=503527

September 6, 2007 12:33 PM

DC Intranet

Search: Ask

DC GIS

DC Virtual Campus:

This is the area where you can find the training materials for the classes offered through CWD.

Overview of DC GIS Services and Applications

- **Lectures*** in PDF Format updated: 7/09/07

Introduction to DC GIS Using ArcGIS 1

- **Lectures*** in PDF Format updated: 8/13/2007
- **Exercises*** in PDF Format updated: 8/13/2007

Working with address and point based data

- **Lectures*** in PDF Format updated: 1/29/07

ESRI Virtual Campus credits are available through coordination with the Geospatial Education Director. To find out how to take advantage of these courses, please e-mail [Tim Abdella](#).

- Visit the [ESRI Virtual Campus](#)

* This document is presented in Portable Document Format (PDF). A PDF reader is required for viewing. [Download a PDF Reader](#) or [Learn More About PDFs](#).

DCGIS HOME

SERVICES

- [Master Address Repository](#)
- [Web Mapping Applications](#)
- [Data Clearinghouse/Catalog](#)
- [Desktop Mapping Applications](#)
- [Tools for Application Developers](#)
- [Training](#)

INFORMATION



FY 08 Class Schedule

- Still waiting on CWD
- Courses to be offered less frequently
- Course catalog will be accurate
- Wish List dates:

Overview:

October 11th
November 20th
January 22nd
March 20th
April 29th
June 10th
July 23rd
September 24th

Introduction:

October 23-25
December 11-13
February 12-14
April 1-3
May 20 -22
Jun 17-19
August 13-15

Address:

November 1st
January 8th
March 4th
May 7th
July 9th
August 26th

Professional:

November 13-14
February 26-27
June 25-26
September 9-10



FY 08 Customer Service Goals

- Formally form Customer service team:
 - Training & Continued Education
 - Technical Support
 - Website Maintenance
 - Documentation development, QA/QC
 - Citrix Account Management / Creation
 - Agency Liaison Services
 - Application testing and Review
 - Tradeshow and event support
 - Special projects – R&D
 - Steering Committee Participation
 - Newsletters and Articles
- Focused training / user development for agencies



Q&A

Timothy L Abdella

GeoSpatial Education Director

Office of the Chief Technology Officer

441 4th Street, NW

Washington, DC 20001

tim.abdella@dc.gov

202-727-4946 Office

716-308-0000 Cell

Thank you



Thank you

Next DC GIS Steering Committee Meeting:

Thursday, December 6, 2007

at 1:00 p.m.

Conference Room TBD

441 4th Street NW

NSDI Cooperative Agreement Program: Strategic Planning Overview and Lessons Learned

Advancing Statewide Spatial Data
Infrastructures in Support of the National
Spatial Data Infrastructure (NSDI)

Strategic Plan Template

For use by all stakeholders in the Geospatial Community



Produced by NSGIC
for the Federal Geographic Data Committee (FGDC)

March 2006



Presented to DC GIS Steering Committee
September 6, 2007

The NSGIC Process and Lessons Learned

Prepared by:

**Rich Grady and
Sara Kustron**

Applied Geographics, Inc. (AppGeo)
Boston, Massachusetts

Presentation Outline

- **The DC Situation**
 - Existing Strategic Plan & GIS Coordination Program (DC GIS)
 - Federated Data Model
 - Proposed Strategic & Business Plan Development Project
- **Important National Initiatives**
 - National Spatial Data Infrastructure (NSDI) and the Fifty States Initiative
 - National States Geographic Information Council (NSGIC)
Templates for GIS Strategic Planning and Business Planning
- **Strategic Planning vs. Business Planning**
- **Refining the Vision and Goals**
- **Lessons Learned From Other CAP Grant Recipients**

The DC Situation

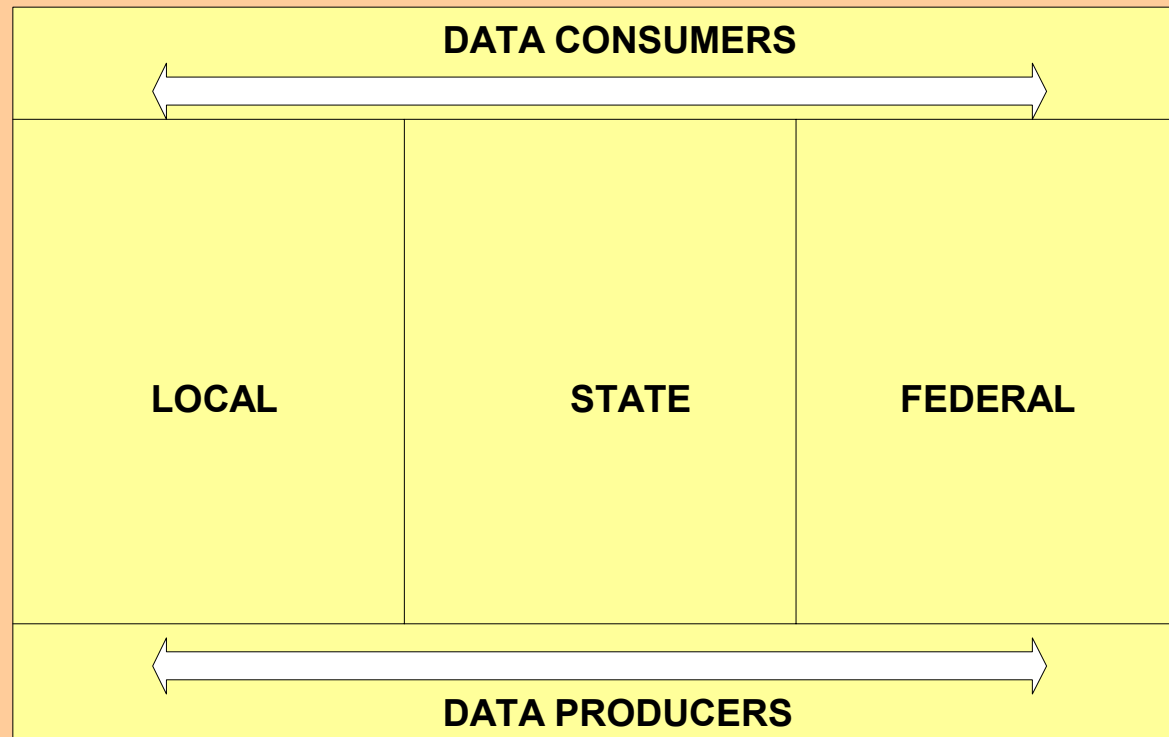
- Existing Strategic Plan document needs to be updated and aligned with national efforts
- DC GIS, reporting into DC OCTO, is *forward-leaning* in its organizational posture and coordination role
- Preliminary goals have been identified for the proposed Strategic & Business Planning project to:
 - **Find champions** in the District's new political and executive leadership
 - Revitalize Geospatial Governance/Coordination
 - Work with such champions to **identify sustainable funding** for the DC GIS program
 - Reach beyond the District government to **new partners** in the Federal Government, Academia, and relevant Non-Profits
 - Demonstrate the **effectiveness of cooperation** with NSDI for the District

GIS Strategic & Business Planning Project

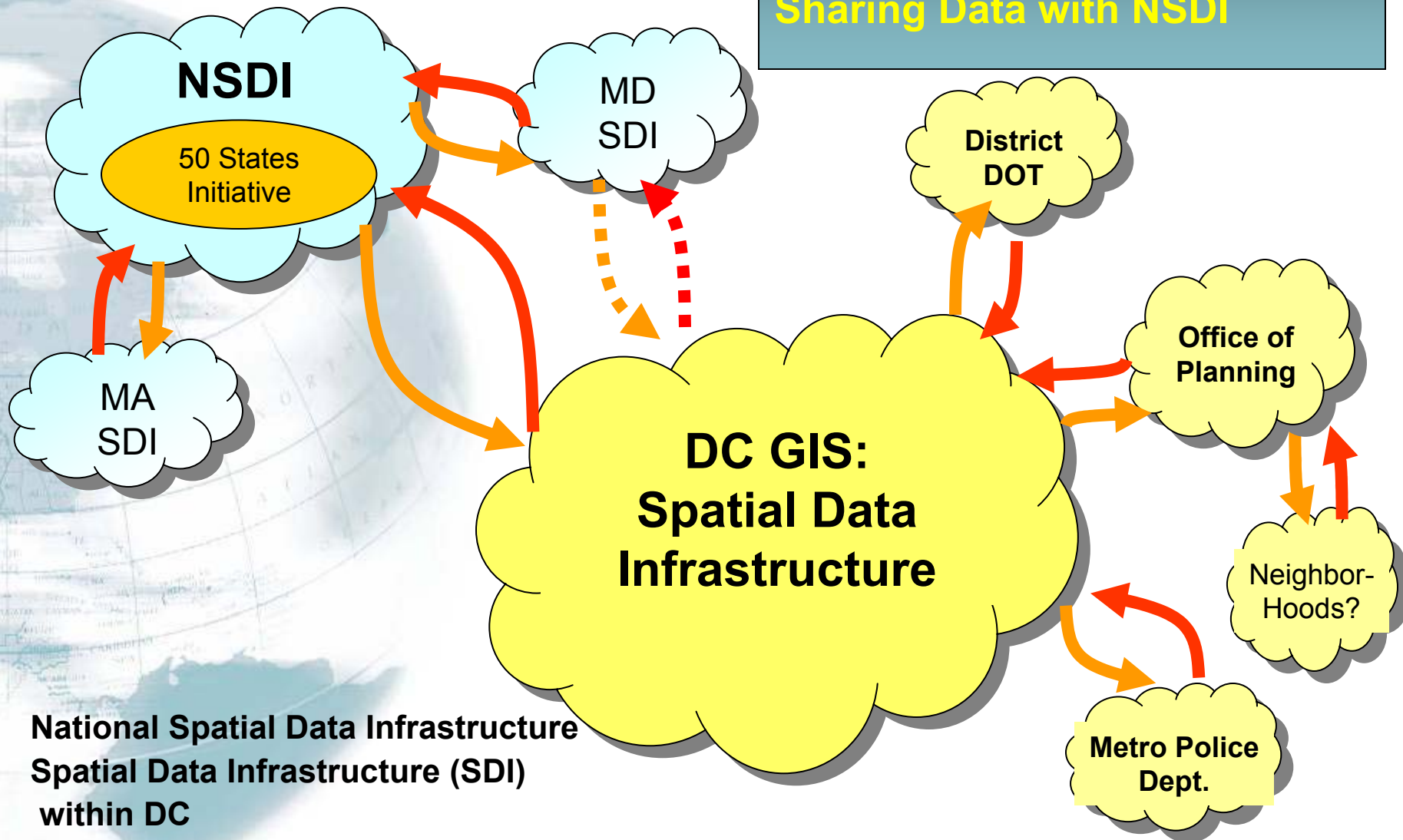
- The need for this to be done has been recognized
- Support for the project was obtained from federal sources
- Outreach to stakeholders is a key part of the process, to gather input and support for a collaborative **District-wide** effort

NSDI Goal: Cross-Governmental Data Sharing

National Spatial Data Infrastructure (NSDI)



Part of a Bigger Picture: Sharing Data with NSDI



- National Spatial Data Infrastructure
- Spatial Data Infrastructure (SDI) within DC
- Participation in a national effort and supply chain of data and services

Fifty States Initiative: *Nine (9) criteria of a successful statewide GIS program*

1. A full-time, **paid coordinator position is designated** and has the authority to implement the state's business and strategic plans
2. A clearly defined **authority exists for statewide coordination** of geospatial information technologies and data production
3. The statewide coordination office has a **formal relationship with the state's Chief Information Officer (CIO)**
4. A **champion** (politician, or executive decision-maker) is aware and involved in the process of geospatial coordination
5. The **responsibilities** for developing the National Spatial Data Infrastructure and a State Clearinghouse **are assigned**
6. The ability exists to **work and coordinate** with local governments, academia, and the private sector
7. The **sustainable funding** sources exist to meet project needs
8. GIS Coordinators have the authority to enter into contracts and become capable of **receiving and expending funds**
9. The **Federal government works through** the statewide coordinating authority


The DC Situation: Comparison to the Nine Criteria of the Fifty States Initiative

- How do you grade yourself? *See Barney Krucoff's scorecard for DC (You've got a head-start!)*
- What improvements are needed?
- What is the political climate, and what is the political will to accomplish something?
- What are the barriers to success?
- What are the key success factors?
- What are the benefits?

Strategic & Business Plan Development

- Identify the stakeholders and the **‘Steering Committee’** for the planning process
- Get familiar with **NSGIC Templates** and planning guidance
- Fold the **DC situation and parts of the existing plan** into the Template
- Sensible **modifications to template outlines as deemed appropriate for DC** are fine (just remember that there is a national context)
- Strategic Plan Content: **Make “reader friendly”** with an awareness of audience
 - Not too long (typically, +/- 20-30 pages)
 - Relatively **high-level**
 - Keep it readable and **digestible**
 - Stories and anecdotes
 - **Graphically rich**
 - Additional data are assembled in appendices
- **Implementation details are reserved for Business Plan(s)**

DC Stakeholders:

- 
- Members of DC GIS Steering Committee (DC GISSC)
 - Federal Agencies
 - Academic Institutions
 - Private Sector
 - Nonprofits
 - Others Groups?
 - Citizens?

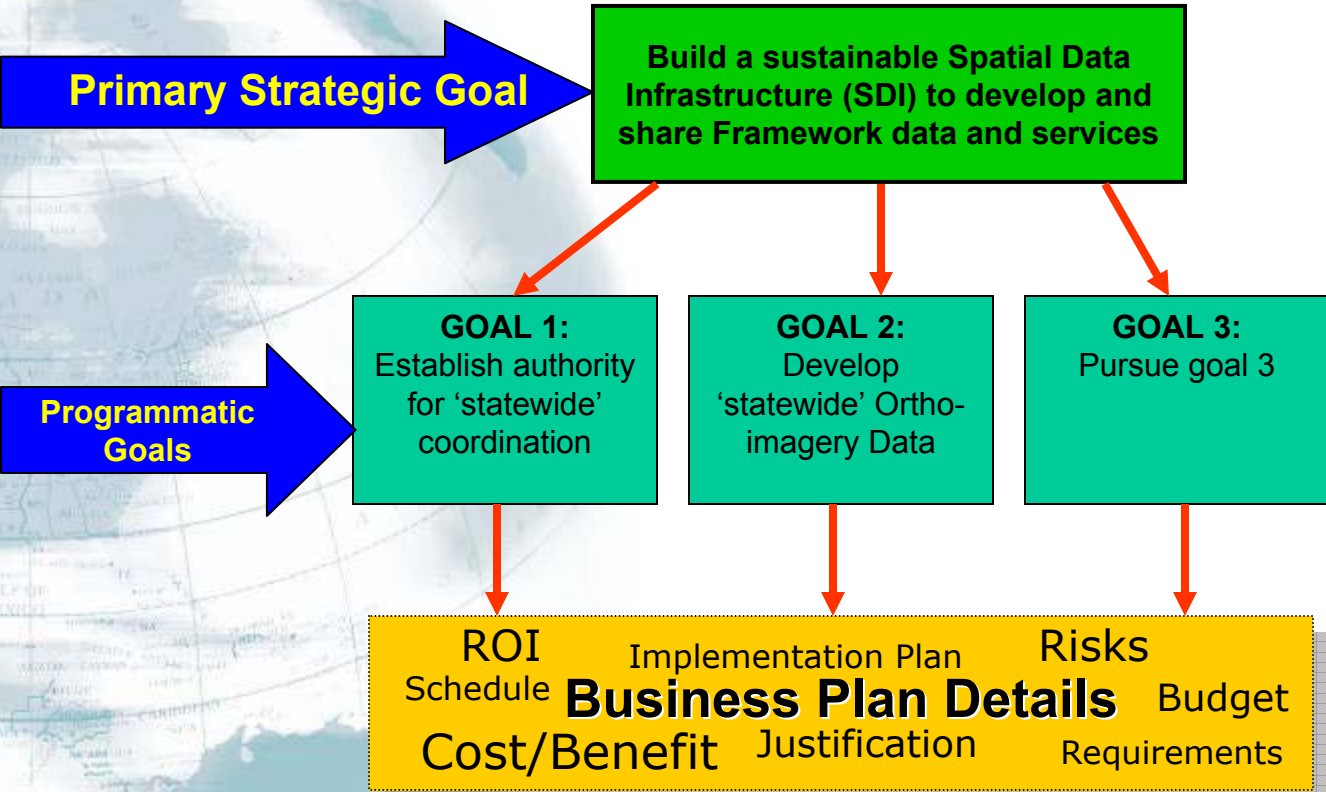
What are the key goals of the Strategic Plan?

- **Improve inter-governmental coordination?**
 - District ⇔ Federal
 - District ⇔ Adjacent States
 - District ⇔ Adjacent Counties
- **To create a sustainable District-wide Spatial Data Infrastructure?**
 - Is the best local data easily accessible and current?
 - Can improved data sharing reduce duplication of effort and infrastructure?
- **To participate in NSDI?**
 - Providing good District level data to the Federal Government should help...
 - In times of crisis situations
 - When resources are being allocated, to help analyze needs
- **To generally “advance” GIS in the District?**
 - Raise general awareness?
 - Enlist a high-level champion?
 - Capitalize on new technology?

The difference between a Strategic and a Business Plan?

- **One Strategic Plan, multiple Business Plans (eventually)**
- **Strategic Plan**
 - **What** and the **Why**
 - Vision & Goals
 - The “**big picture**” and overall context
- **Business Plan (s)**
 - **How, When, and How much**
 - Aimed at those that approve and fund
 - Details of initiatives emerge
 - Makes the business case for implementing a ‘programmatic’ goal

Strategic vs. Business Plan



SP	
SP	BPs
	BPs

The process **matters!**

“Plans are nothing;
planning is everything”

Dwight D. Eisenhower



<http://www.whitehouse.gov/history/presidents/de34.html>

“Plans are of little importance,
but planning is essential”

Winston Churchill



http://en.wikipedia.org/wiki/Image:Winston_Churchill.jpg

What are other CAP Grant recipients doing?

Priorities vary from State-to-State

- **Develop and Sustain Maintenance of 'Statewide' Data Layers**
 - The **Massachusetts , Kansas, and New York** plans are focused on **key data layers** and **data infrastructure for sharing, e.g.:**
 - Orthos
 - Parcels
 - Addresses
 - Critical infrastructure
- **Improve GIS Governance**
 - The **New Hampshire, Wyoming, Connecticut, and Colorado** plans are centered on the creation of a Geographic Information Officer (GIO) role and a GIS Office
- **Capitalize on New Technology**
 - The **Rhode Island and Utah** efforts are focused on building a multi-departmental enterprise architecture with data warehousing and web services

Lessons-Learned in Other States

On GIS Strategic and Business Planning Efforts

- Identify the **high-visibility issues** where GIS coordination activities can have a positive impact (e.g., Smart Growth, Public Safety, and Education, to name a few)
- Do not underestimate the importance of **high-level support** and input **early in the process** (i.e., business/departmental sponsor and political/legislative sponsor)
- Business Planning may result in **discoveries** that require adjustments to Strategic Plan (e.g., strategic goals may need **refinement** to enhance probability of successful implementation)

Lessons-Learned in Other States *(continued)*

On GIS Strategic and Business Planning Efforts

- Strategic and Business Plans are **‘living’ documents** (i.e., planning is a process, and plans should evolve to **account for changing conditions** – this includes refinements to the NSGIC templates)
- Case studies of actual experiences can help **make the business case** (especially if quantifiable, but also if they tell a meaningful story)
- Creating an **intergovernmental Strategic Planning Committee** to oversee the process and take ownership of the plan can be helpful in demonstrating consensus
- When states with a mature GIS operation engage in strategic planning it is less about “discovering” what is required and it is more about “articulating” the requirement and **building a consensus** for an approach or solution

Summary

- Understand the NSGIC recommended process for Strategic & Business Planning
- Leverage lessons learned (from both the DC experience and elsewhere)
- Adapt the process and the lessons to DC's current situation and needs
- Involve the Stakeholders in the planning process
- Identify the audience for the planning documents
- In the Strategic Plan, articulate 'programmatic' goals that are clear and actionable
- In the Business Plan(s), include the implementation details to achieve particular 'programmatic' goal(s)

Remember:

It's the process, not just the plan that counts!



Thank You!

Rich Grady
617-447-2455
Sara Kustron
617-447-2477

rgrady@appgeo.com
skustron@appgeo.com