

# Census 2010 Redistricting Data and the American Community Survey(ACS)

COG Board of Directors

February 9, 2011

Gregory Goodwin  
COG /DCPS Staff



James Whitehorne  
U.S. Census Bureau





# Today's Presentation

- Impending release of 2010 Census Redistricting Data
- What is the American Community Survey (ACS)?
- Methodology of Survey
- Overview of ACS data products
- COG's ACS Work Plan

# Census 2010 Redistricting Data

James Whitehorne,  
Assistant Chief  
Redistricting Data Office  
U.S. Census Bureau

## Strength in Numbers

Your Guide to Census 2010 Redistricting Data From the U.S. Census Bureau



U.S. CENSUS BUREAU  
Helping You Make Informed Decisions

United States  
Census  
2010



# Public Law 94-171

- Public Law 94-171 specifies that within 1 year of Census Day, the Census Bureau must send each state the small area data it will need to redraw districts for the state legislature.
- Public Law 94-171 sets up a voluntary program between the Census Bureau and those states that wish to receive population tabulations for voting districts and other state specified geographic areas.



# Process for P.L. 94-171 Data Delivery

- Data must be and is delivered in a non-partisan manner.
- We ship to governors, majority and minority leaders of both parties, commission directors (when we know who they are), redistricting committees (when we know who they are) and to the D.C. city council and mayor, at the same time.



# P.L. 94-171 Geographic Support Products

- TIGER/Line Shapefiles - Delivery Completed January, 2011
- Map Suite – Expected Delivery last two weeks of February, 2011
- Block Assignment Files - Expected Delivery last two weeks of February, 2011



# P.L. 94-171 Summary Files

- The P.L. 94-171 redistricting data files are delivered on a state by state flow basis beginning in early February 2011.
- P.L. 94-171 redistricting data files are delivered to all states no later than March 31, 2011.



# Redistricting Process

Each state has unique challenges

- Maryland - relocate prisoners to home of record
- Virginia - plans required for Nov. 2011 elections
- District of Columbia – must redistrict 4 types of districts; Wards, ANC Areas; ANC Single Member Districts; Precincts



# The American Community Survey (ACS)

Gregory Goodwin,  
Regional Planner  
Department of Community  
Planning & Services  
Metropolitan Washington  
Council of Governments





# The American Community Survey (ACS)

Until Census 2010, the Census Bureau used 2 forms:

- **Short Form** -- basic demographic & housing statistics
  - Age, race, gender of residents
  - Tenure – owned or rented housing unit
- **Long Form** -- detailed economic, demographic, commuting
  - Age, race, gender of residents, tenure (*short form data*)
  - Income and poverty
  - educational attainment
  - language
  - Employment occupation and industry
  - Commuting – mode and travel time



# The American Community Survey (ACS)

- Replaces the Census long form
- Ongoing survey that provides detailed data every year
  - 3 million households surveyed annually nation-wide
- Helps to determine how more than \$400 billion in federal and state funds are distributed each year.
- An important resource for COG in measuring progress in meeting the goals of *Region Forward* initiative.



## Social Characteristics

- Education
- Marital Status
- Fertility
- Grandparent Caregivers
- Veterans
- Disability Status
- Place of Birth
- Citizenship
- Year of Entry
- Language Spoken at Home
- Ancestry / Tribal Affiliation



# Economic Characteristics

- Income and Poverty Status
- Benefits
- Employment Status
- Occupation Industry
- Commuting to Work
- Place of Work



# Housing Characteristics

- Tenure
- Occupancy and Structure
- Housing Value
- Taxes and Insurance
- Utilities
- Mortgage/Monthly Rent



# Demographic Characteristics

- Sex
- Age
- Race
- Hispanic Origin



# Methodology and Challenges of Survey

## The American Communities Survey:

- First implemented in 2005 and will continue to provide data every year.
- Nearly 3 million households surveyed each year
- ACS sample smaller than that of the Census 2000 long-form sample (+/- 18 million housing units)
- ACS will provide *annual* estimates for larger geography.
- Regular data users must be aware of margin of error or confidence intervals and statistical significance issues
  - Smaller geographic areas = smaller sample size



# Data Products Release Schedule

Data Product	Population Size of Area	Data Released in:				
		2009	2010	2011	2012	2013
1-Year Estimates for Data Collected in:	65,000+	2008	2009 (Dec. 2010)	2010	2011	2012
3-Year Estimates for Data Collected in:	20,000+	2006-2008	2007-2009 (Jan. 2011)	2008-2010	2009-2011	2010-2012
5-Year Estimates for Data Collected in:	All Areas*		2005-2009 (Dec. 2010)	2006-2010	2007-2011	2008-2012

\*Five-Year estimates will be available for areas as small as census tracts and block groups. Source: US Census Bureau

# Product Availability in Local Jurisdictions

Jurisdiction	5-year	3-year	1-year
District of Columbia	X	X	X
Frederick County	X	X	X
City of Frederick	X	X	
Montgomery County	X	X	X
City of Gaithersburg	X	X	
City of Rockville	X	X	
City of Takoma Park	X		
Prince George's County	X	X	X
City of Bowie	X	X	
City of College Park	X	X	
City of Greenbelt	X	X	
Town of Bladensburg	X		

# Product Availability in Local Jurisdictions

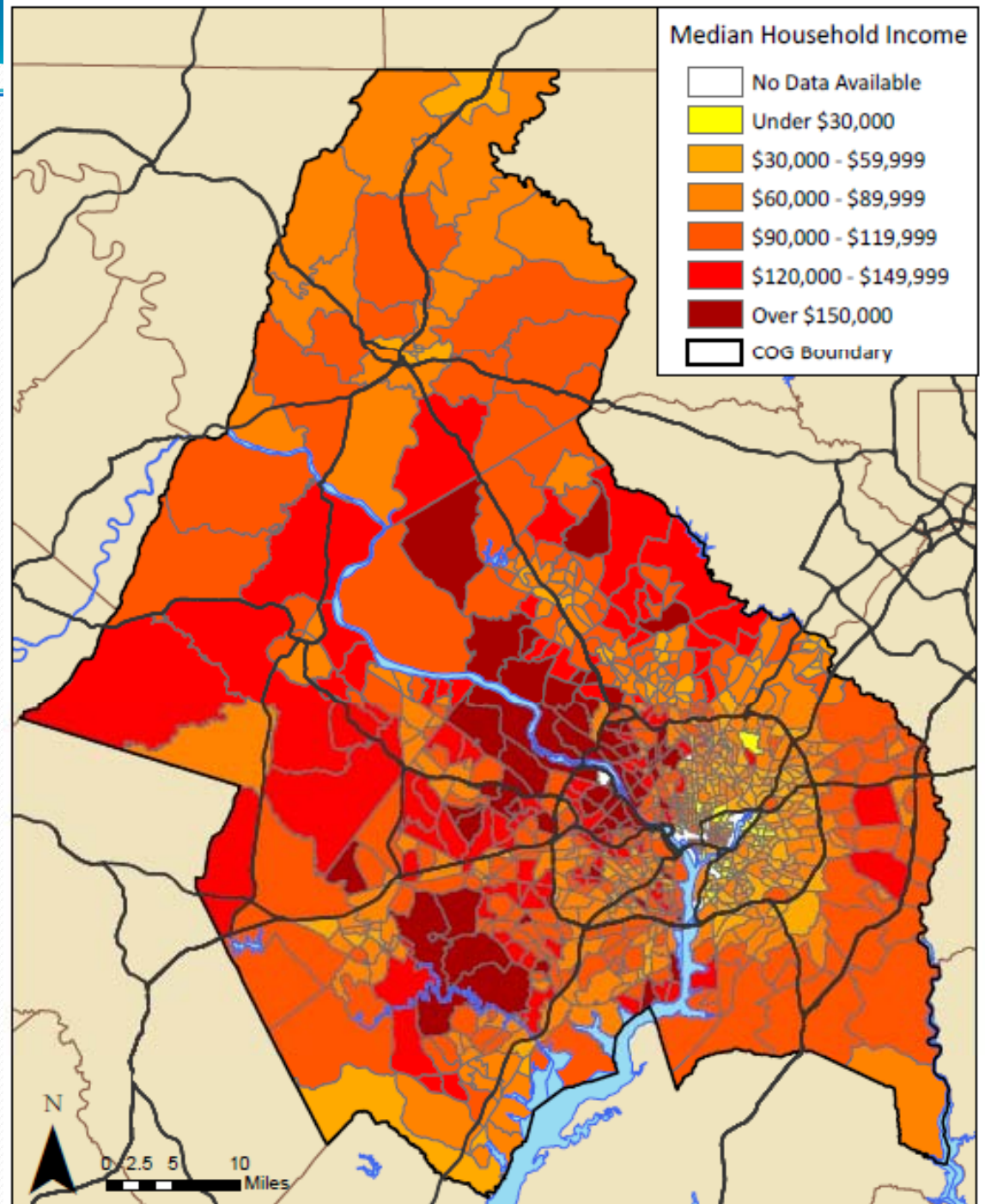
Jurisdiction	5-year	3-year	1-year
Arlington County	X	X	X
Fairfax County	X	X	X
Loudoun County	X	X	X
Prince William County	X	X	X
City of Alexandria	X	X	X
City of Falls Church	X		
City of Fairfax	X	X	
City of Manassas	X	X	
City of Manassas Park	X		

# Proposed COG ACS Topical Reports

- Changes in Population
- Median Household Income and Poverty
- Nativity of Foreign Born
- Educational Attainment
- Journey to Work



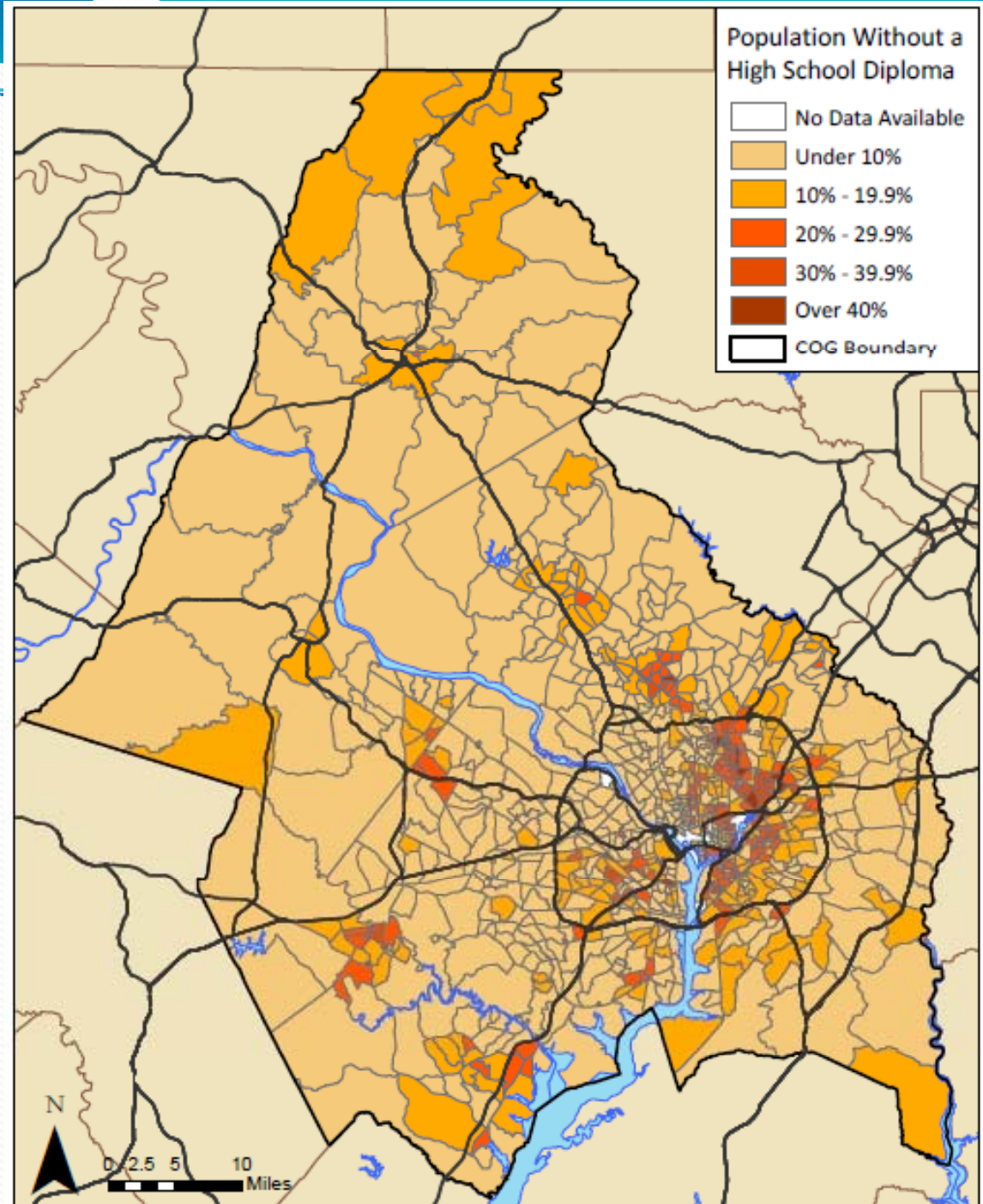
# COG Region - Median Household Income



Source: American Community Survey, 2005 - 2009, Table B19013

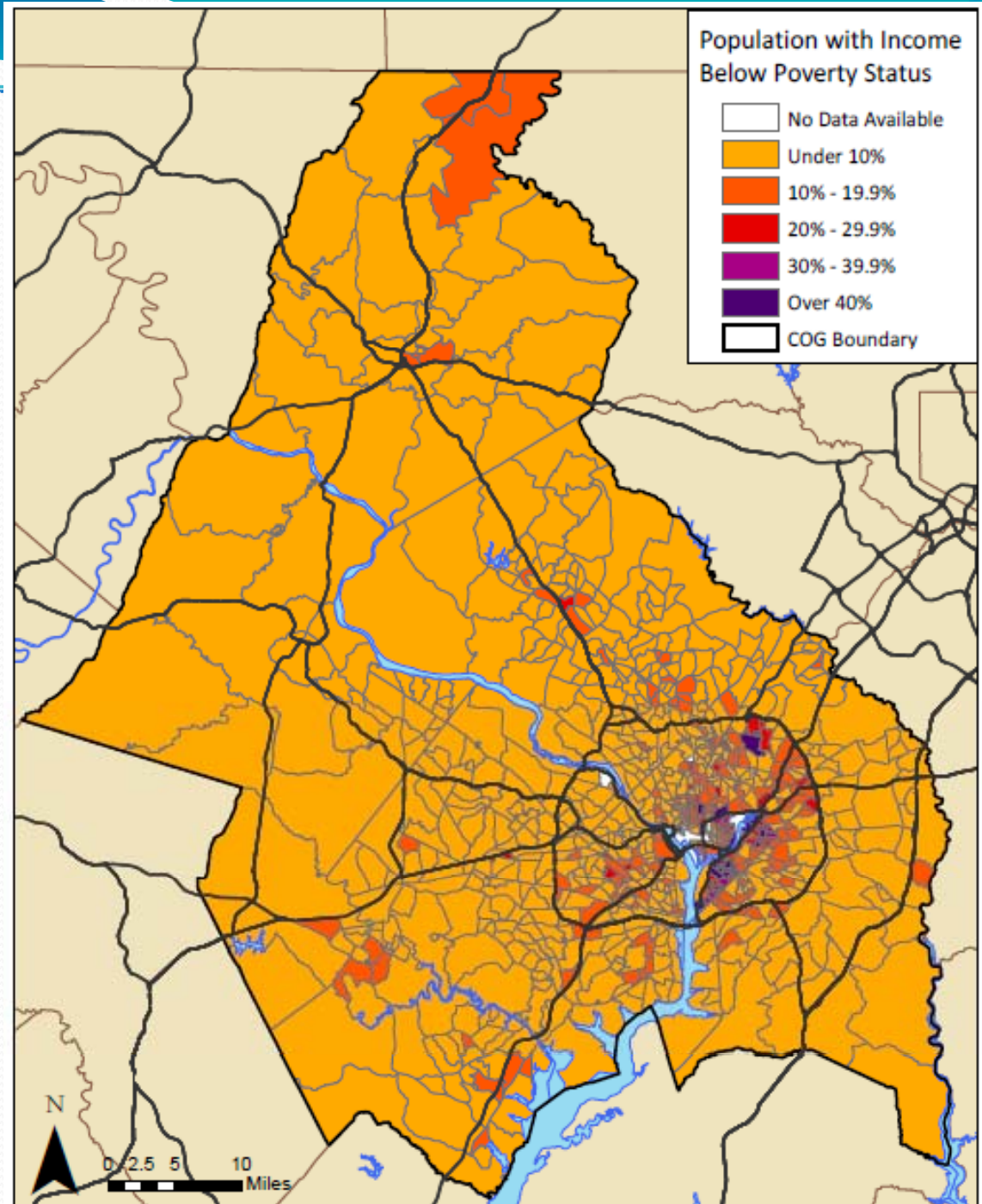


# Percent of Population Over 25 years Without a High School Diploma



Source: American Community Survey, 2005 - 2009, Table B15002

# Population With Income Below Poverty Status



Source: American Community Survey, 2005 - 2009, Table B17001