

# TRANSPORTATION LAND-USE CONNECTIONS PROGRAM

---

## FY 2025 TECHNICAL ASSISTANCE

John Swanson, Transportation Planner  
Kenneth Derryberry, TLC Intern

TPB Technical Committee  
April 5, 2024



# TLC Program Background

---

## History

Began in 2007 to promote building more walkable and vibrant communities

## Over time

177 projects funded for nearly \$7 million between 2007 and 2024

## Projects

Cover planning issues, including trail planning, corridor studies, and TOD analysis



# Solicitation

---

## Application

Between January 5  
– March 8, 2024

## Received

29 applications  
for **\$2,215,000**  
funding request

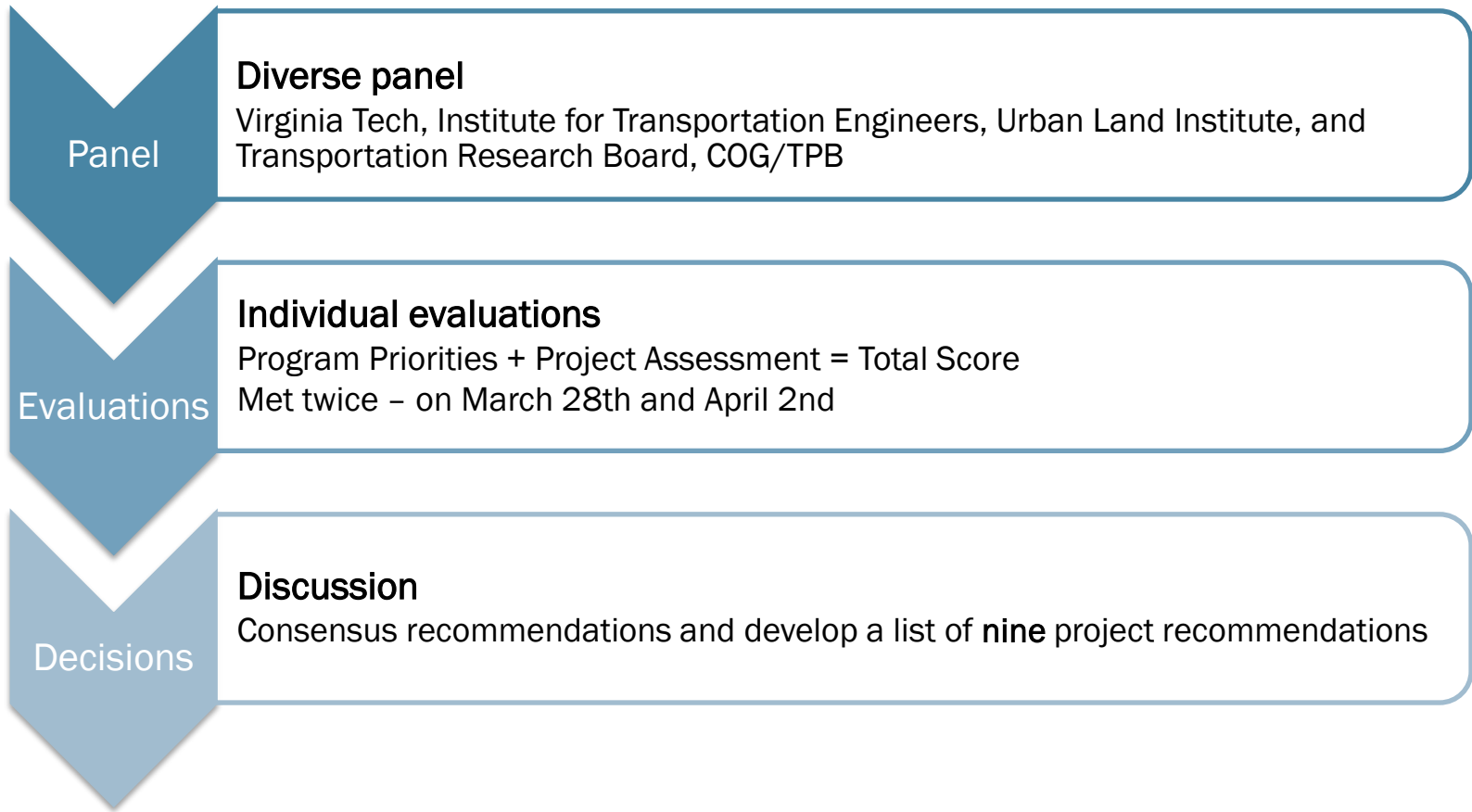
## Distribution

15 from Virginia  
12 from Maryland  
2 from DC

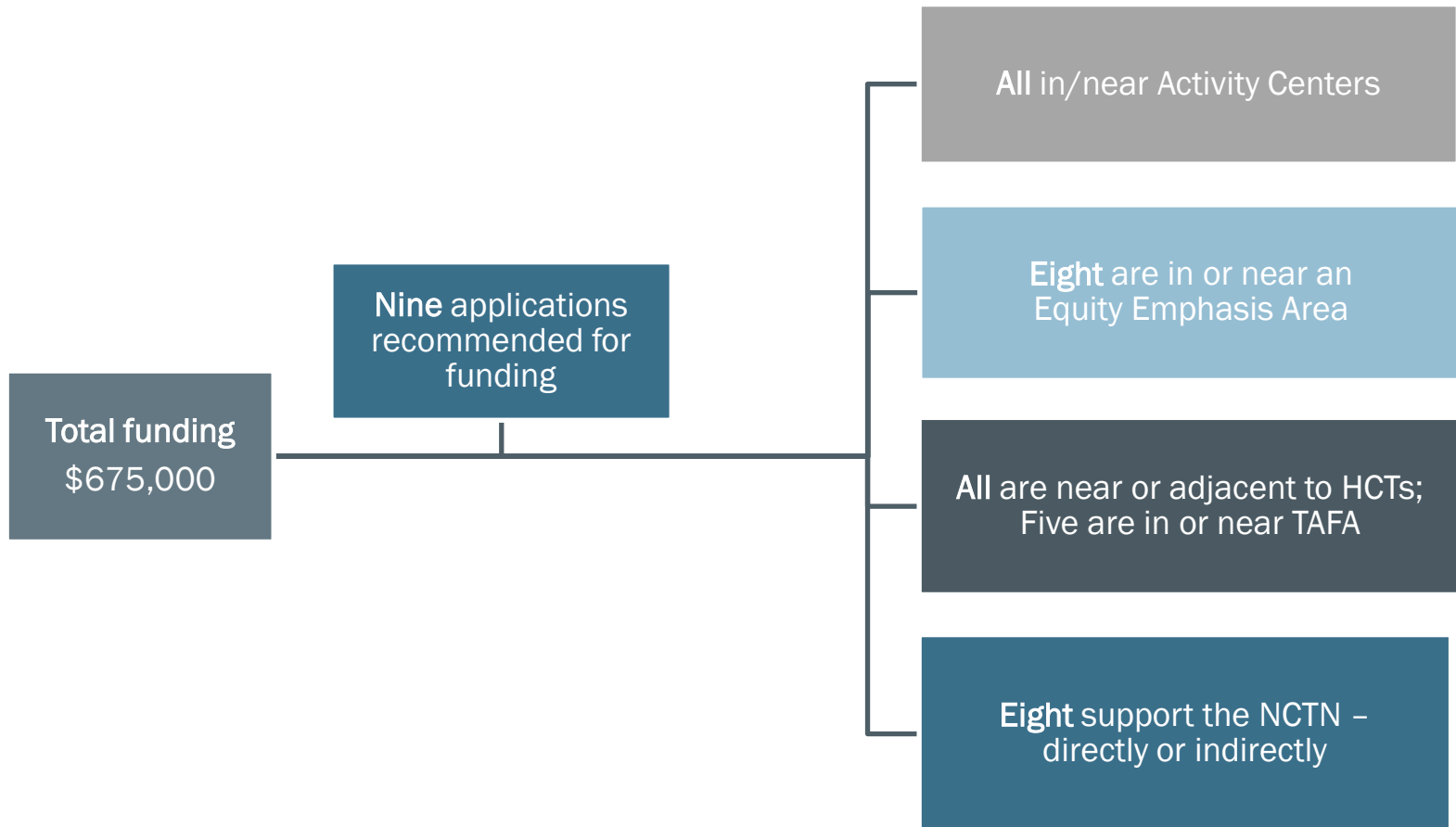


# Selection

---



# Overview of Recommendations



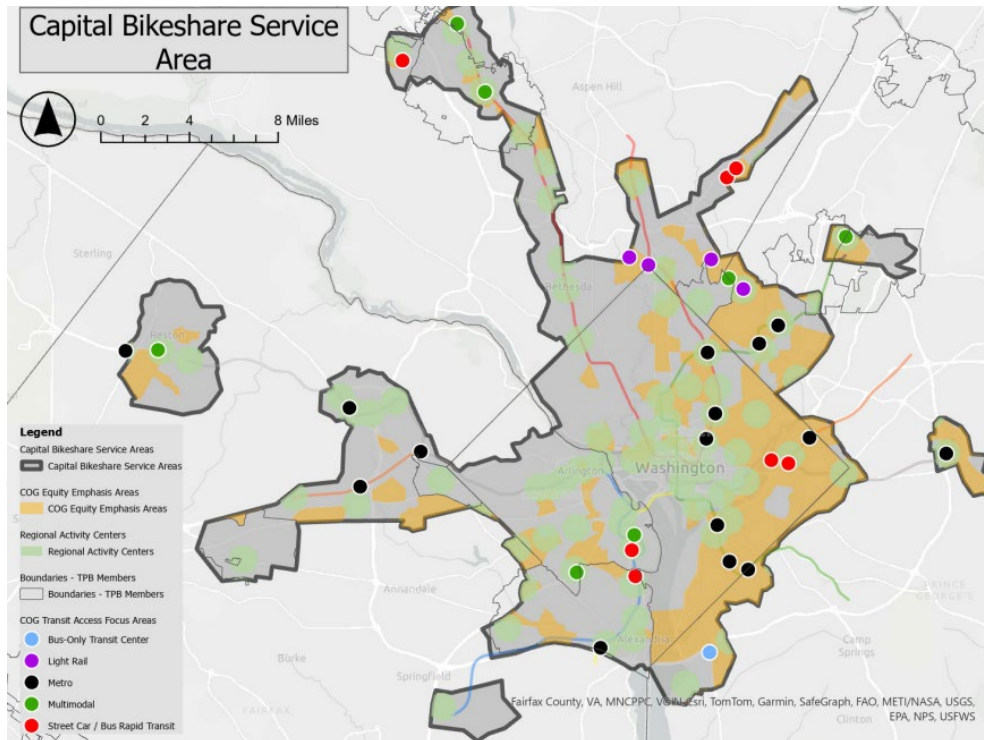
# Draft Funding Recommendations

Jurisdiction	Project	Funding
DC	Capital Bikeshare Fare Study	\$55,000
DC	Public Space Strategies to Advance Racial Equity	\$50,000
College Park	River Road Protected Bike Lanes Project - 30% Design Phase	\$60,000
Frederick, City of	Southern East Street Redesign 30% Design	\$100,000
Montgomery Co	Montgomery County VMT Tool	\$80,000
Rockville	Congressional Lane Complete Street Feasibility Study	\$80,000
Takoma Park	Hammond Avenue Bike-Pedestrian By-Pass	\$80,000
Alexandria	Edsall Road Corridor Improvements	\$80,000
Fairfax Co	Wiehle Avenue Safety Project	\$100,000



# Capital Bikeshare Fare Study

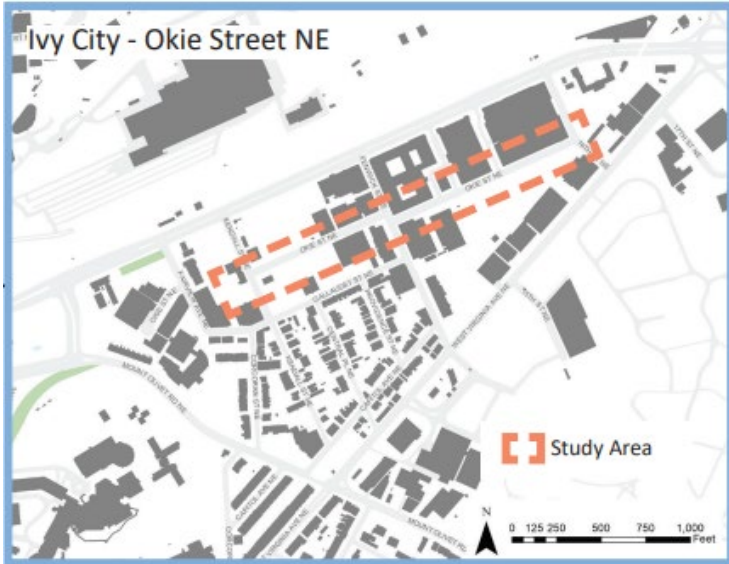
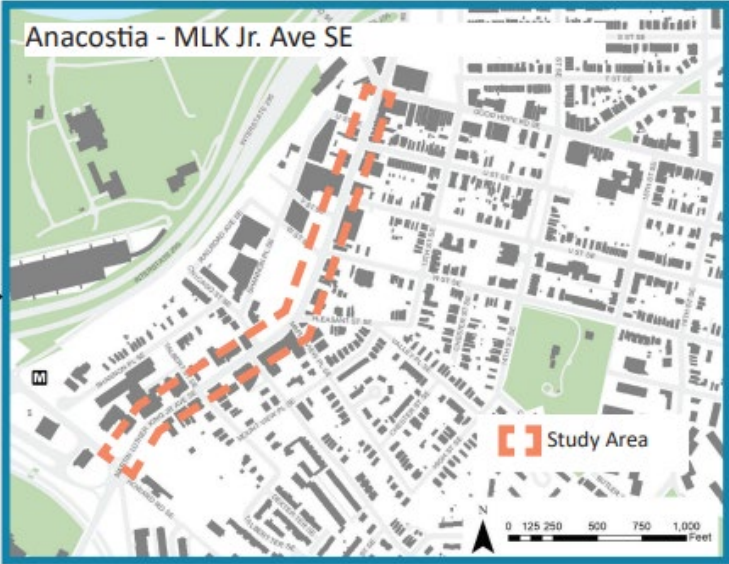
Washington, D.C.- \$55,000





# Public Space Strategies to Advance Racial Equity

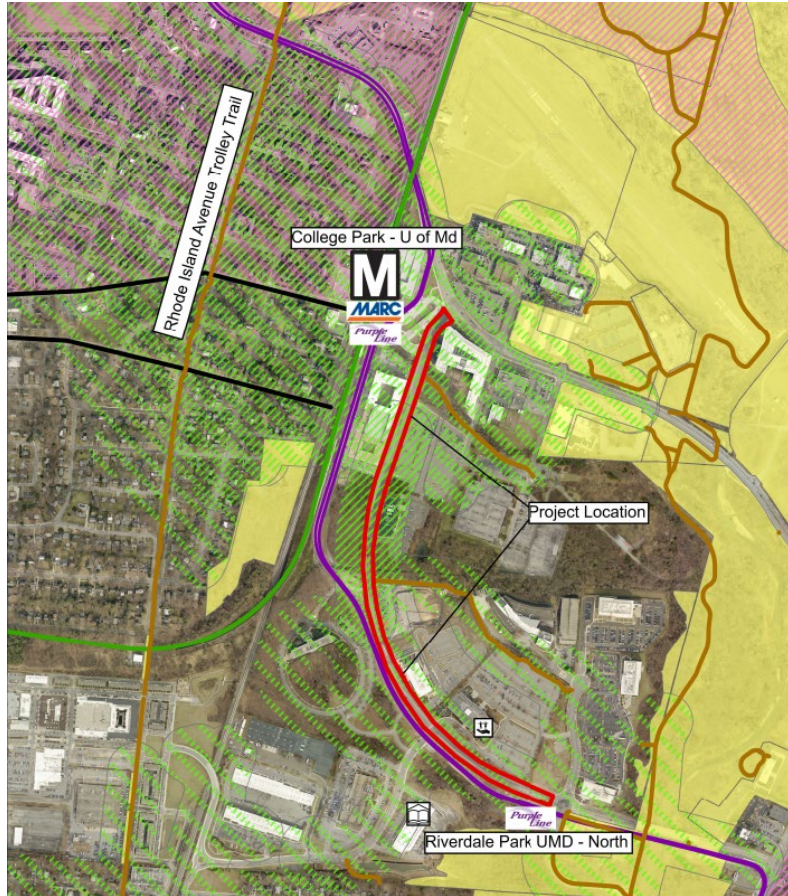
Washington, D.C.- \$50,000





# River Road Protected Bike Lanes Project - 30% Design Phase

City of College Park- \$60,000







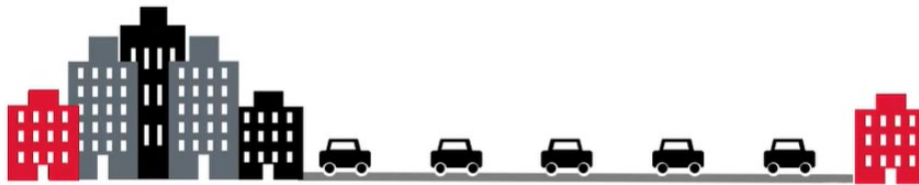
# Montgomery County VMT Tool

Montgomery County- \$80,000

## Analyzed using LOS

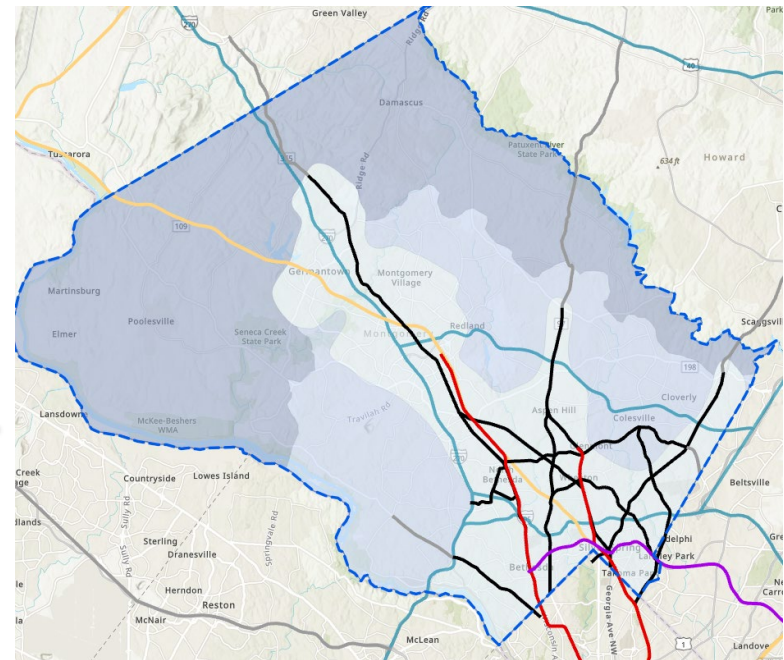
Many LOS impacts  
\$\$\$

Few LOS impacts  
\$



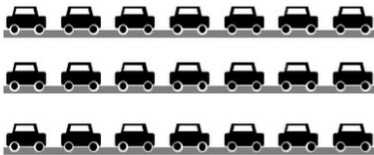
Very little VMT  
\$

A lot of VMT  
\$\$\$



## Mitigation using LOS

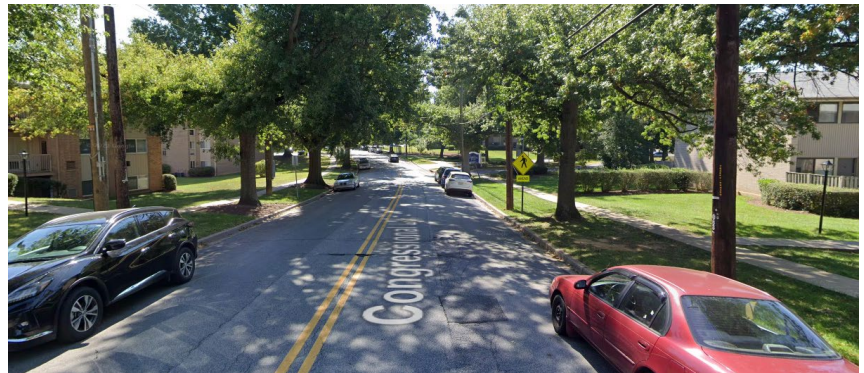
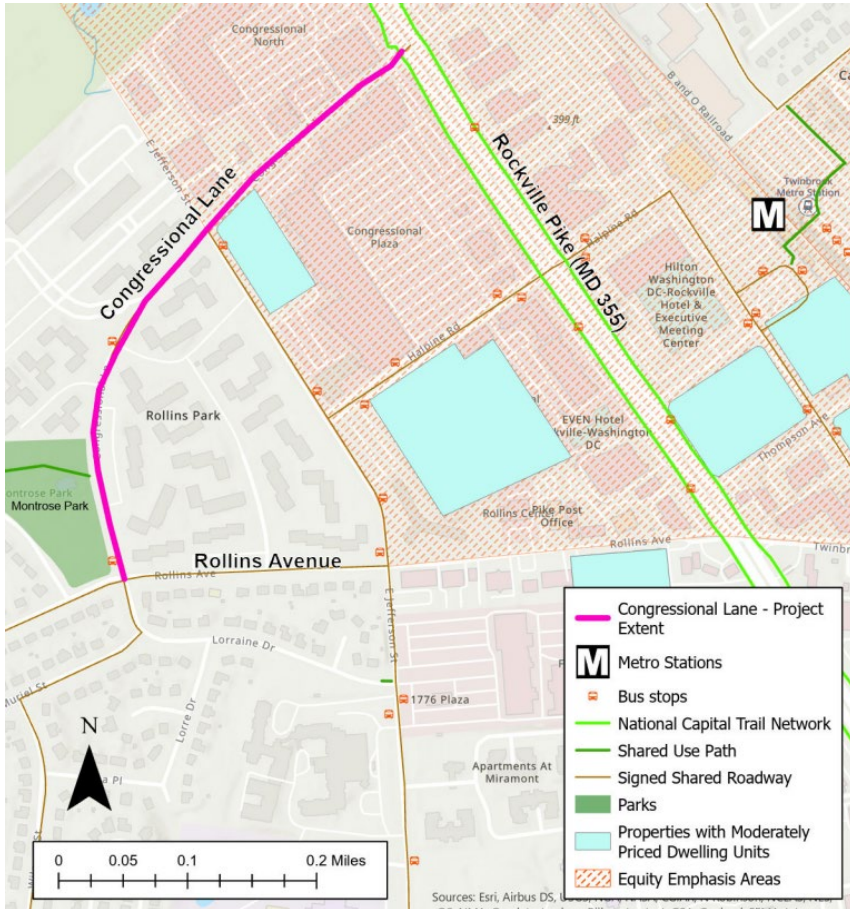
## Mitigation using VMT





# Congressional Lane Complete Street Feasibility Study

City of Rockville- \$80,000





# New Ave Bikeway Northern Extension Study

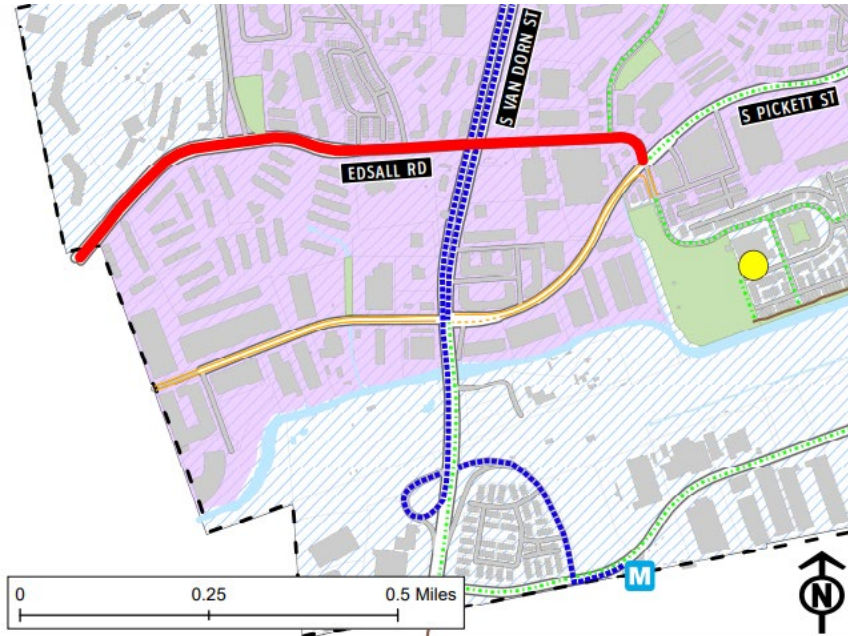
City of Takoma Park- \$80,000





# Edsall Road Corridor Improvements

City of Alexandria- \$80,000



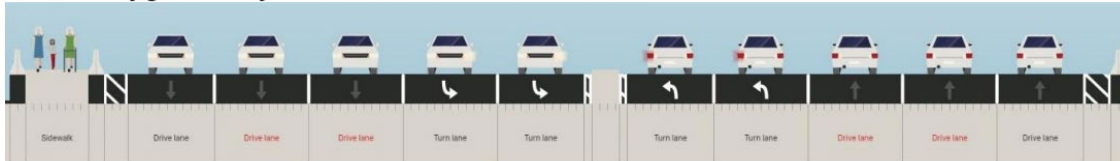


# Wiehle Avenue Safety Project

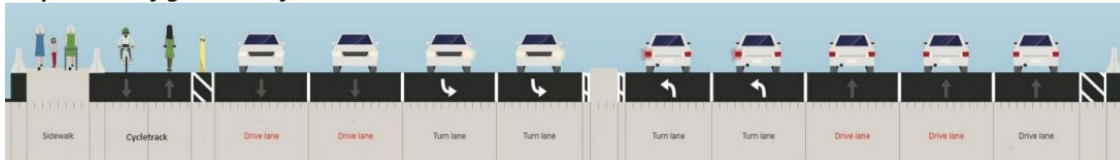
Fairfax County- \$100,000



**Current configuration of Wiehle Ave over Dulles Toll Road**

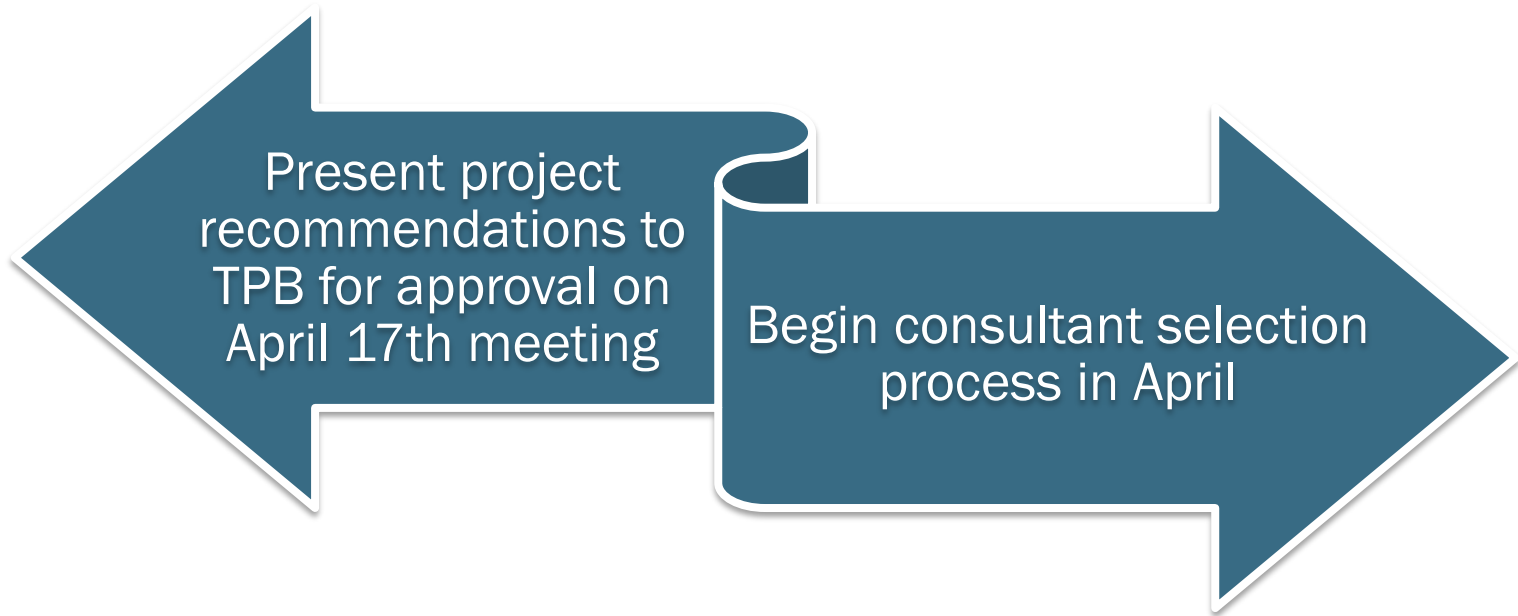


**Proposed configuration of Wiehle Ave over Dulles Toll Road**



# Next Steps

---



## **John Swanson**

Transportation Planner

[jswanson@mwkog.org](mailto:jswanson@mwkog.org)

## **Kenneth Derryberry**

TLC Intern

[kderryberry@mwkog.org](mailto:kderryberry@mwkog.org)

**[mwkog.org/TPB](http://mwkog.org/TPB)**

---

Metropolitan Washington Council of Governments

777 North Capitol Street NE, Suite 300

Washington, DC 20002



National Capital Region  
**Transportation Planning Board**