



# *The Potomac Heritage National Scenic Trail in Northern Virginia*

*July 19, 2011*

*MWCOG Bike Pedestrian Subcommittee*



# Potomac Heritage National Scenic Trail

- One of 26 national scenic and historic trail designations.
- Braided, 830-mile network of locally-managed routes
  - The Potomac between the mouth of the River and Allegheny Highlands in the upper Ohio River basin.
- Blends outdoor recreation and interpretation of the ecological, historical and cultural significance of the Trail corridor, connecting local resources to national stories
- Trail network is intended for non-motorized modes of travel including, hiking, hiking / equestrian and hiking / equestrian / bicycling facilities
  - 10-mile Potomac Heritage Trail and
  - 18-mile Mount Vernon Trail
  - Trail segments in northern Fairfax, Prince William County, and eastern Loudoun counties
- Based on concept plans completed 2002 member jurisdictions and the Commonwealth have recognized the Trail in local comprehensive plans the Virginia Outdoors Plan



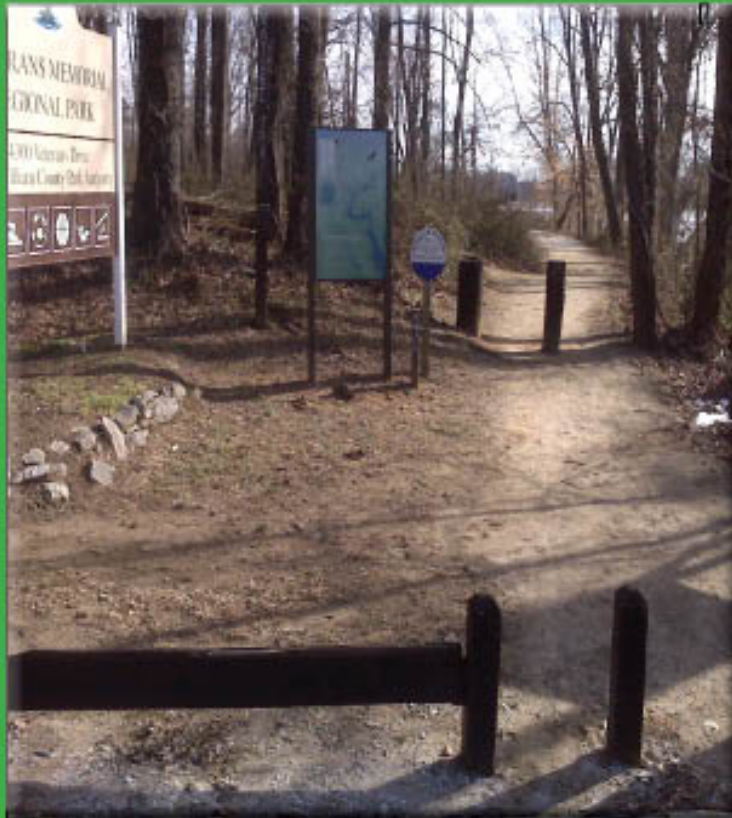


# Authorized Corridor for Northern Virginia



# Corridor Analysis

For The Potomac Heritage  
National Scenic Trail  
In Northern Virginia



Download:  
[www.novaregion.org/PHNST](http://www.novaregion.org/PHNST)

Draft April 2011



# Benefits of the Corridor Analysis

- Larger Context for Local Trail Improvements
- Connectivity of Trail with other regional, local amenities and routes
- Local priorities with cost estimates.
- Funding Sources, Trail Benefits, References

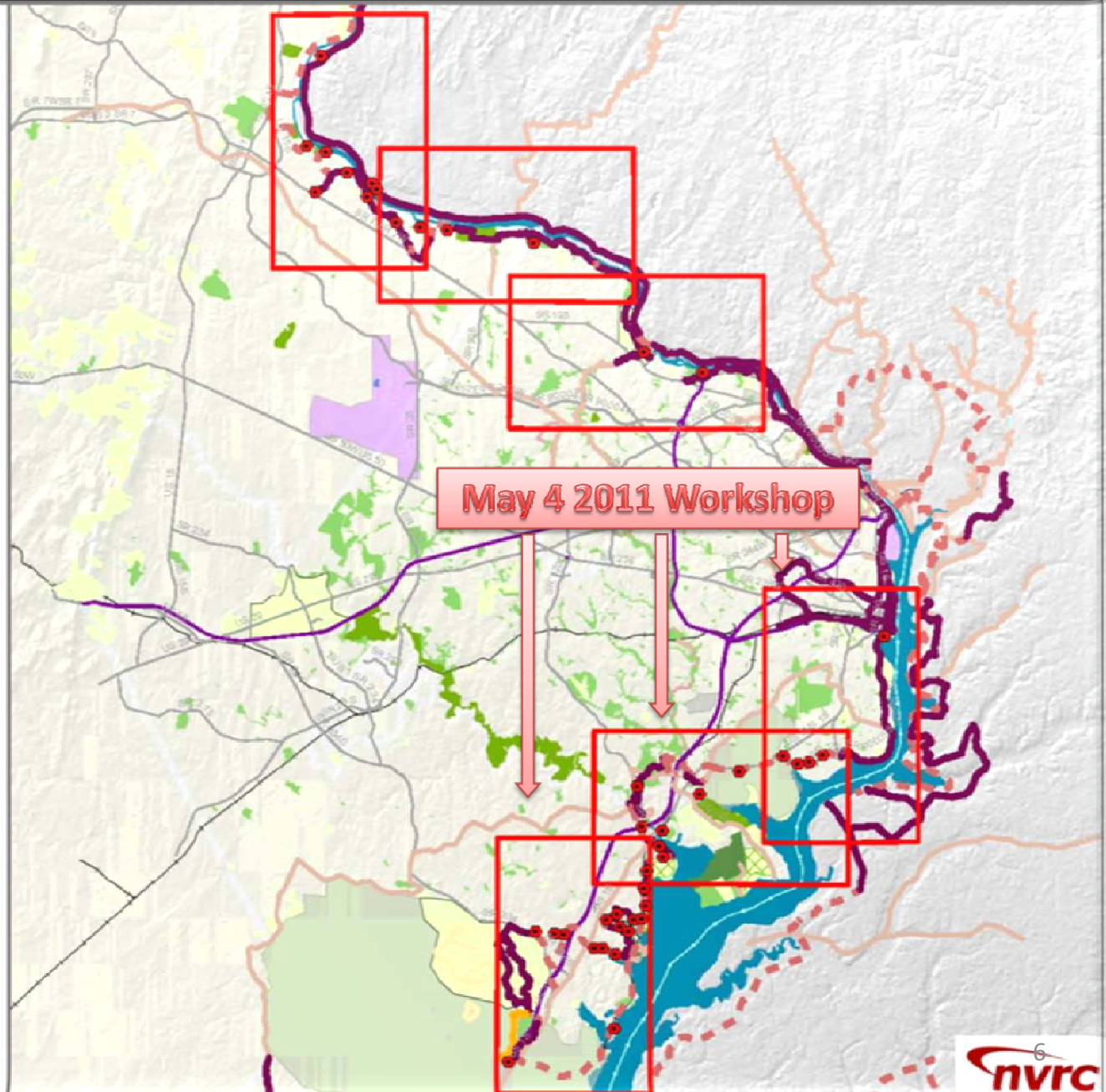
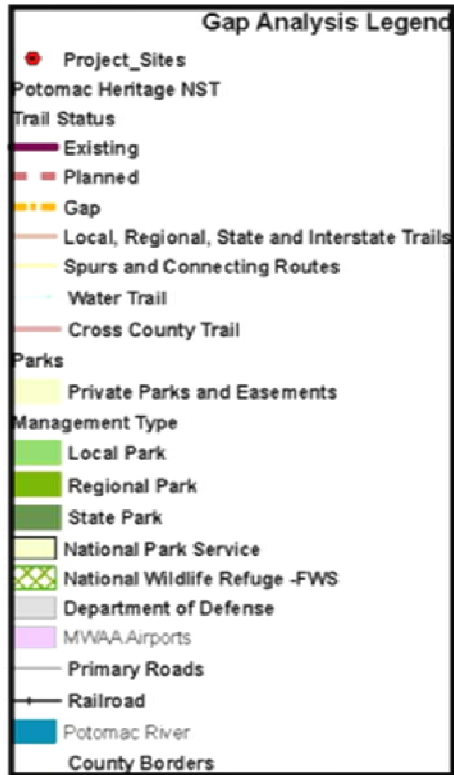
## Process

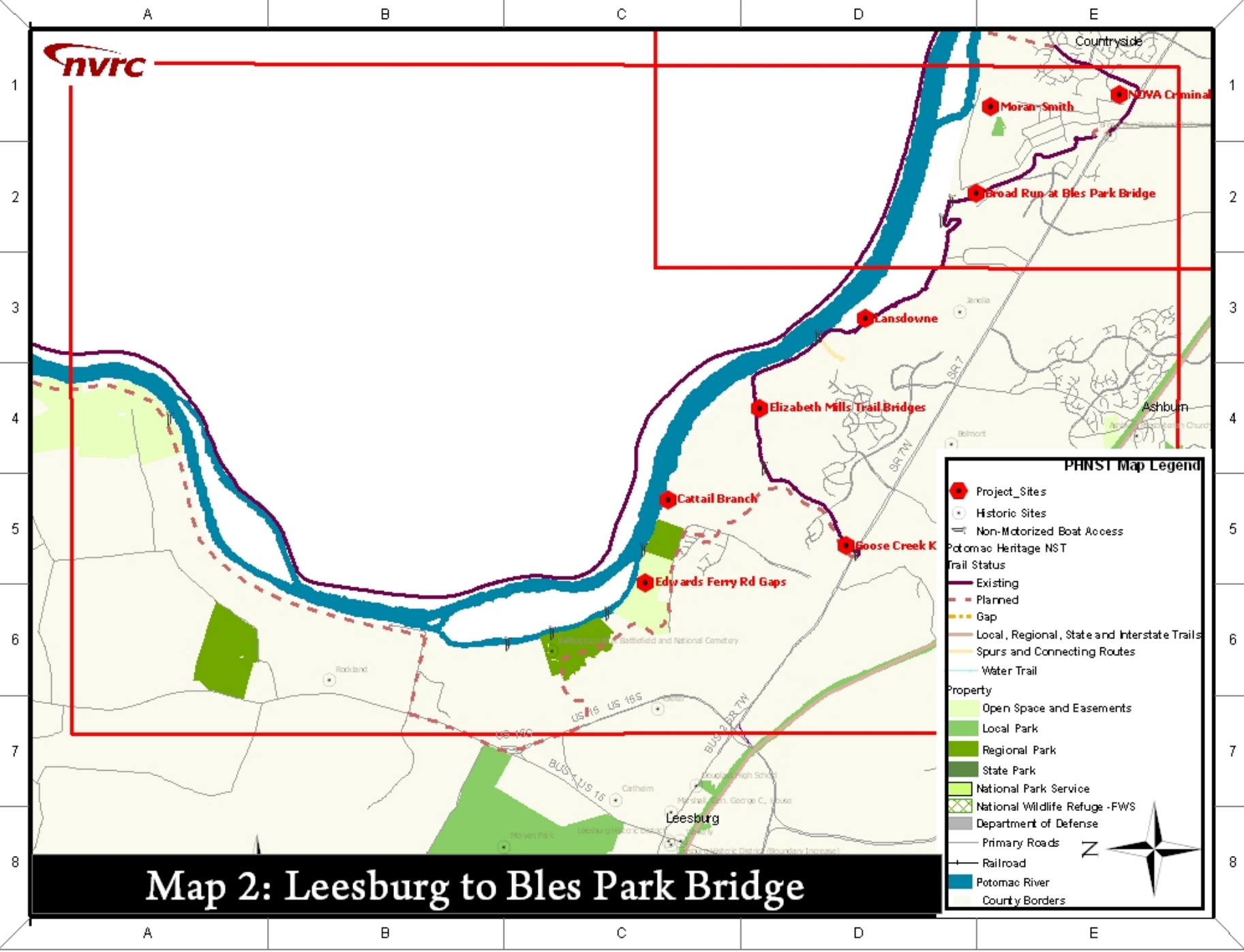
- Used earlier implementation plans to develop project list.
- Local land and trail managers identified priorities
- Updated shape files, maps
- Provided additional references to document...benefits, funding, references.





# Map 1: Corridor Analysis for Potomac Heritage National Scenic Trail



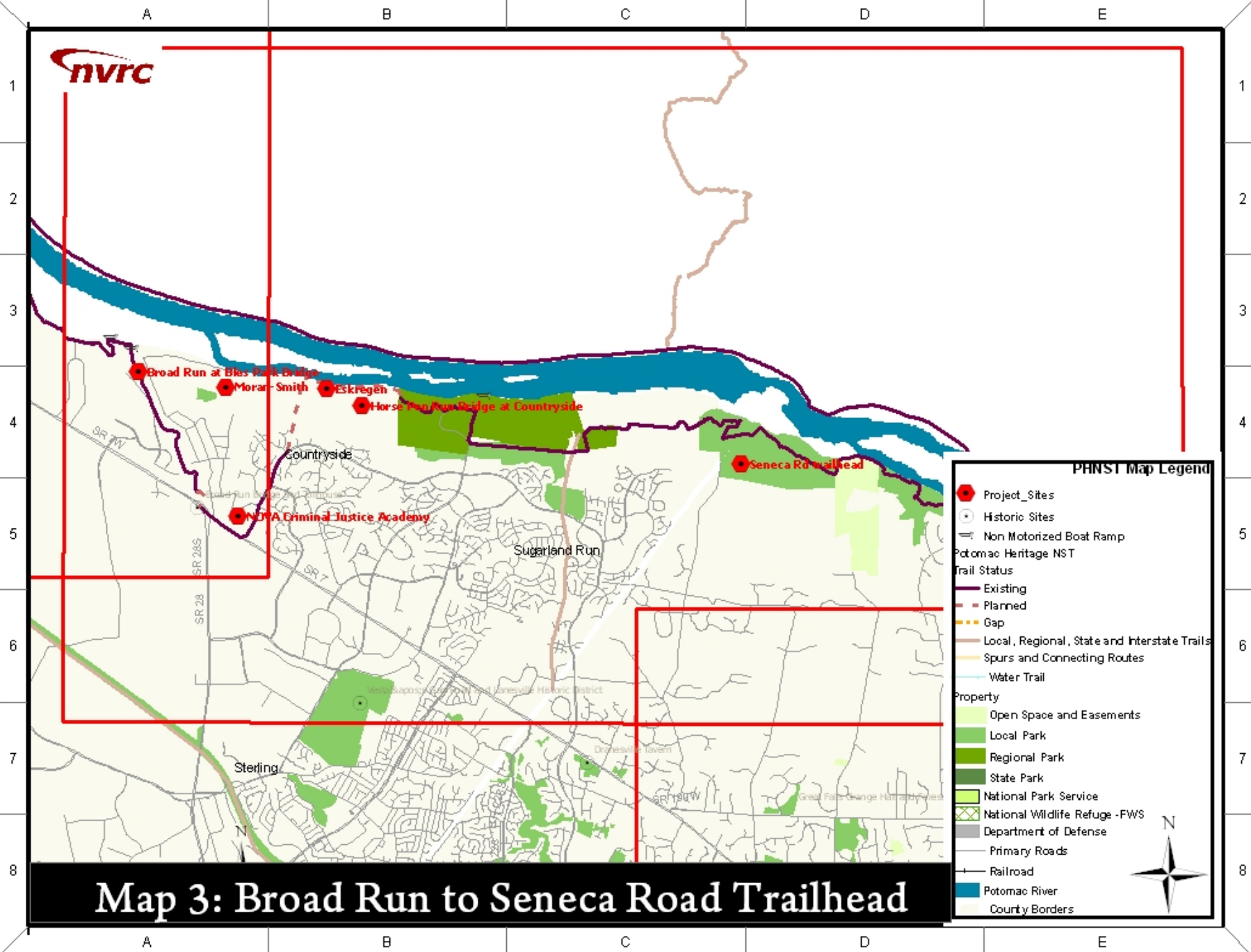


### PHNST Map Legend

- Project\_Sites
- Historic Sites
- Non-Motorized Boat Access
- Potomac Heritage NST
- Trail Status**
  - Existing
  - Planned
  - Gap
  - Local, Regional, State and Interstate Trails
  - Spurs and Connecting Routes
  - Water Trail
- Property**
  - Open Space and Easements
  - Local Park
  - Regional Park
  - State Park
  - National Park Service
  - National Wildlife Refuge -FWS
  - Department of Defense
  - Primary Roads
  - Railroad
  - Potomac River
  - County Borders



**Map 2: Leesburg to Bles Park Bridge**



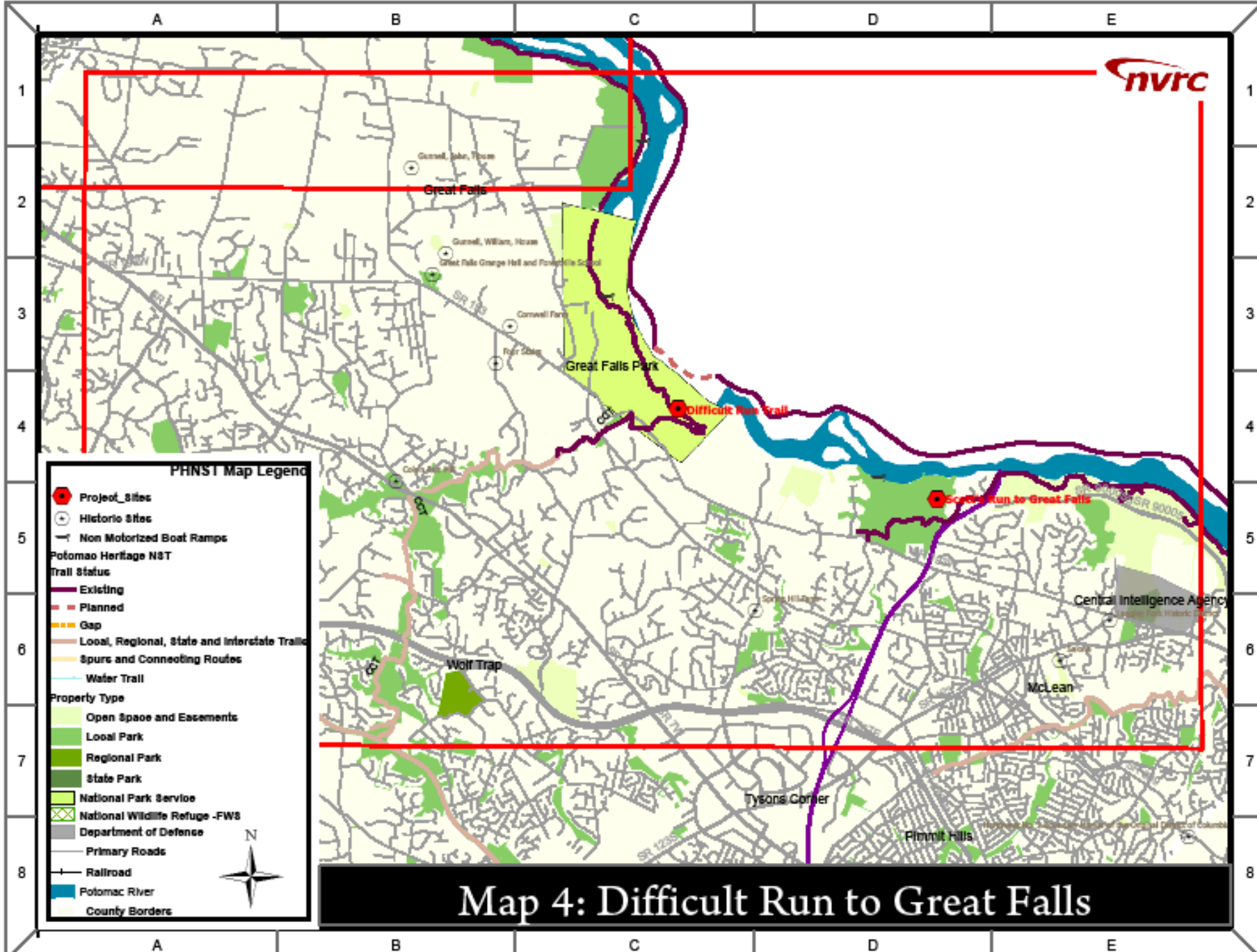
**PHNST Map Legend**

- Project\_Sites
- Historic Sites
- Non Motorized Boat Ramp
- Potomac Heritage NST
- Trail Status
  - Existing
  - Planned
  - Gap
- Local, Regional, State and Interstate Trails
- Spurs and Connecting Routes
- Water Trail
- Property
  - Open Space and Easements
  - Local Park
  - Regional Park
  - State Park
  - National Park Service
  - National Wildlife Refuge -FWS
  - Department of Defense
- Primary Roads
- Railroad
- Potomac River
- County Borders



**Map 3: Broad Run to Seneca Road Trailhead**

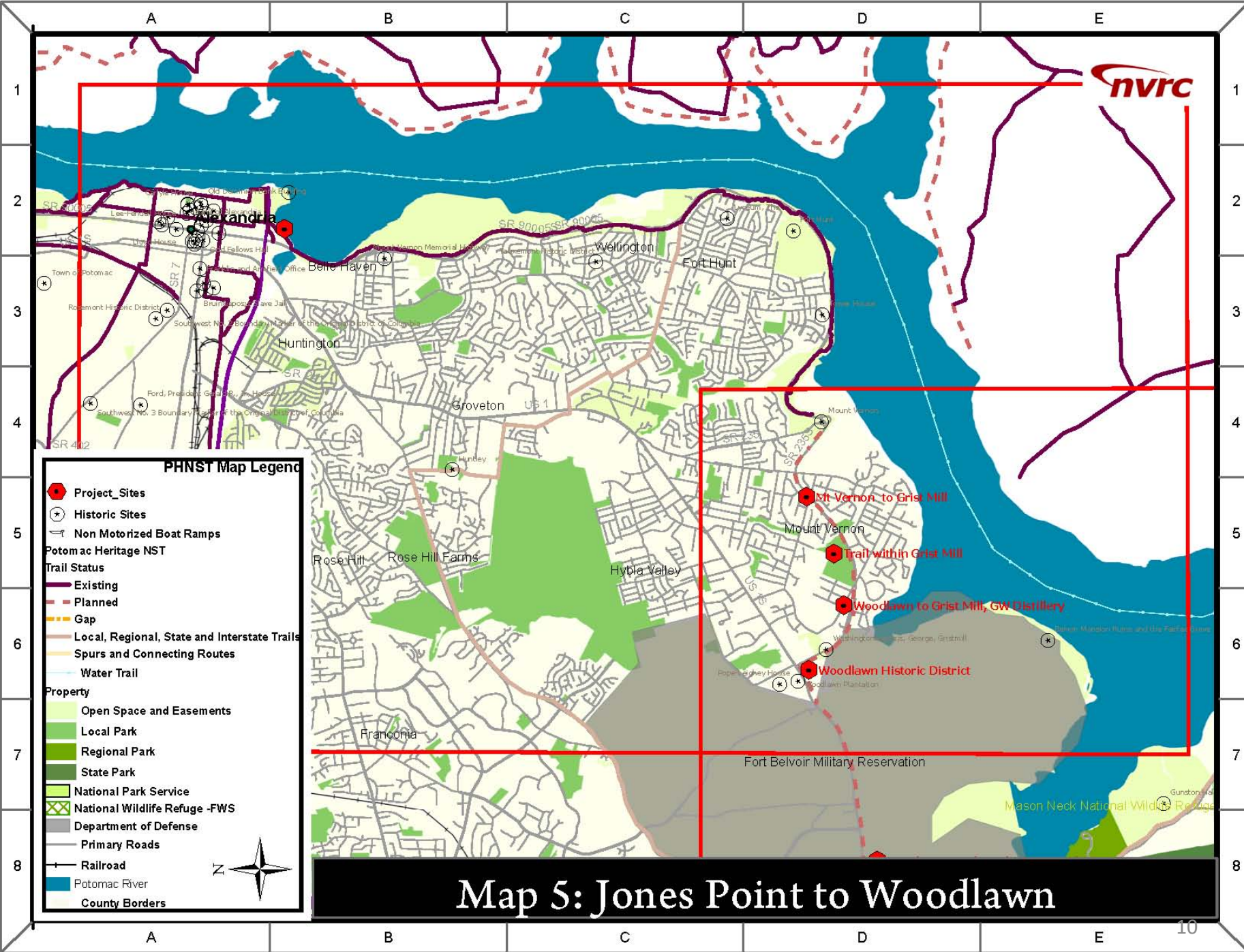




**PHNST Map Legend**

- Project Sites
- Historic Sites
- ⚓ Non Motorized Boat Ramps
- Potomac Heritage NST
- Trail Status
  - Existing
  - - - Planned
  - Gap
  - Local, Regional, State and Interstate Trails
  - Spur and Connecting Routes
  - Water Trail
- Property Type
  - Open Space and Easements
  - Local Park
  - Regional Park
  - State Park
  - National Park Service
  - National Wildlife Refuge -FWS
  - Department of Defence
  - Primary Roads
  - Railroad
  - Potomac River
  - County Borders

**Map 4: Difficult Run to Great Falls**



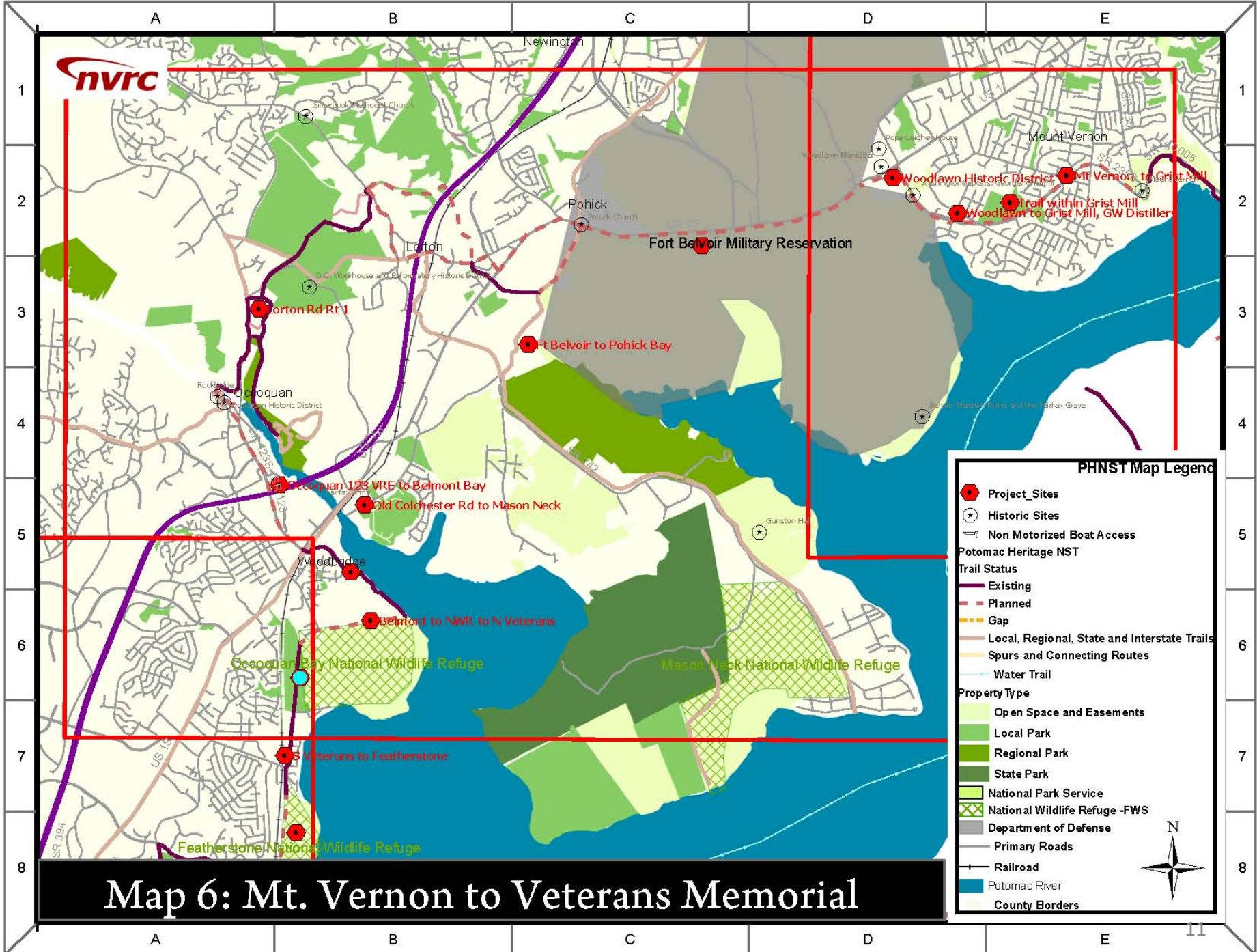
**PHNST Map Legend**

- Project\_Sites
- Historic Sites
- Non Motorized Boat Ramps
- Potomac Heritage NST**
- Trail Status**
- Existing
- Planned
- Gap
- Local, Regional, State and Interstate Trails
- Spurs and Connecting Routes
- Water Trail
- Property**
- Open Space and Easements
- Local Park
- Regional Park
- State Park
- National Park Service
- National Wildlife Refuge -FWS
- Department of Defense
- Primary Roads
- Railroad
- Potomac River
- County Borders



**Map 5: Jones Point to Woodlawn**





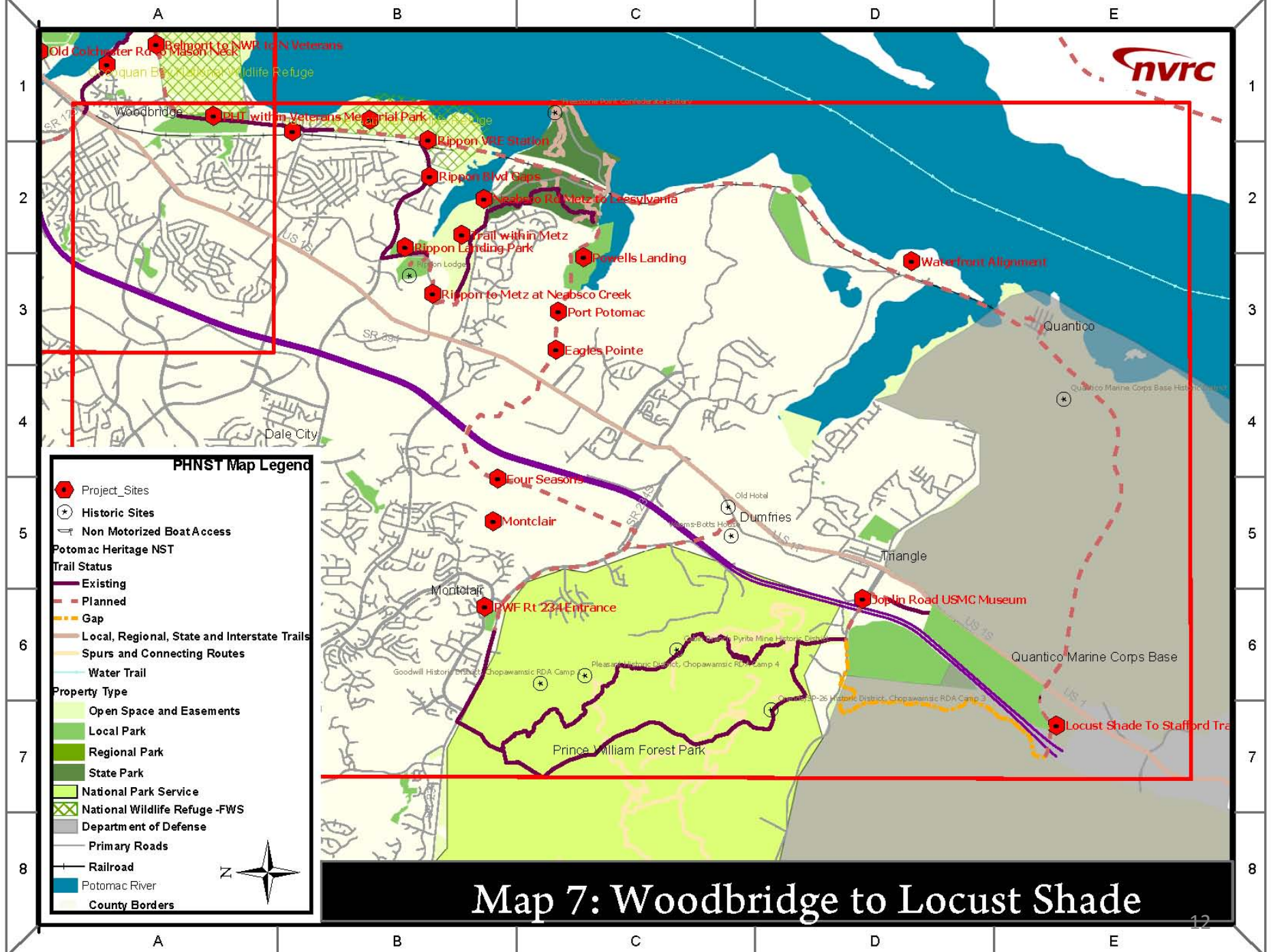
**PHNST Map Legend**

- ⬢ Project Sites
- \* Historic Sites
- Non Motorized Boat Access
- Potomac Heritage NST**
- Trail Status**
- Existing
- Planned
- Gap
- Local, Regional, State and Interstate Trails
- Spurs and Connecting Routes
- Water Trail
- Property Type**
- Open Space and Easements
- Local Park
- Regional Park
- State Park
- National Park Service
- National Wildlife Refuge -FWS
- Department of Defense
- Primary Roads
- Railroad
- Potomac River
- County Borders

**Map 6: Mt. Vernon to Veterans Memorial**







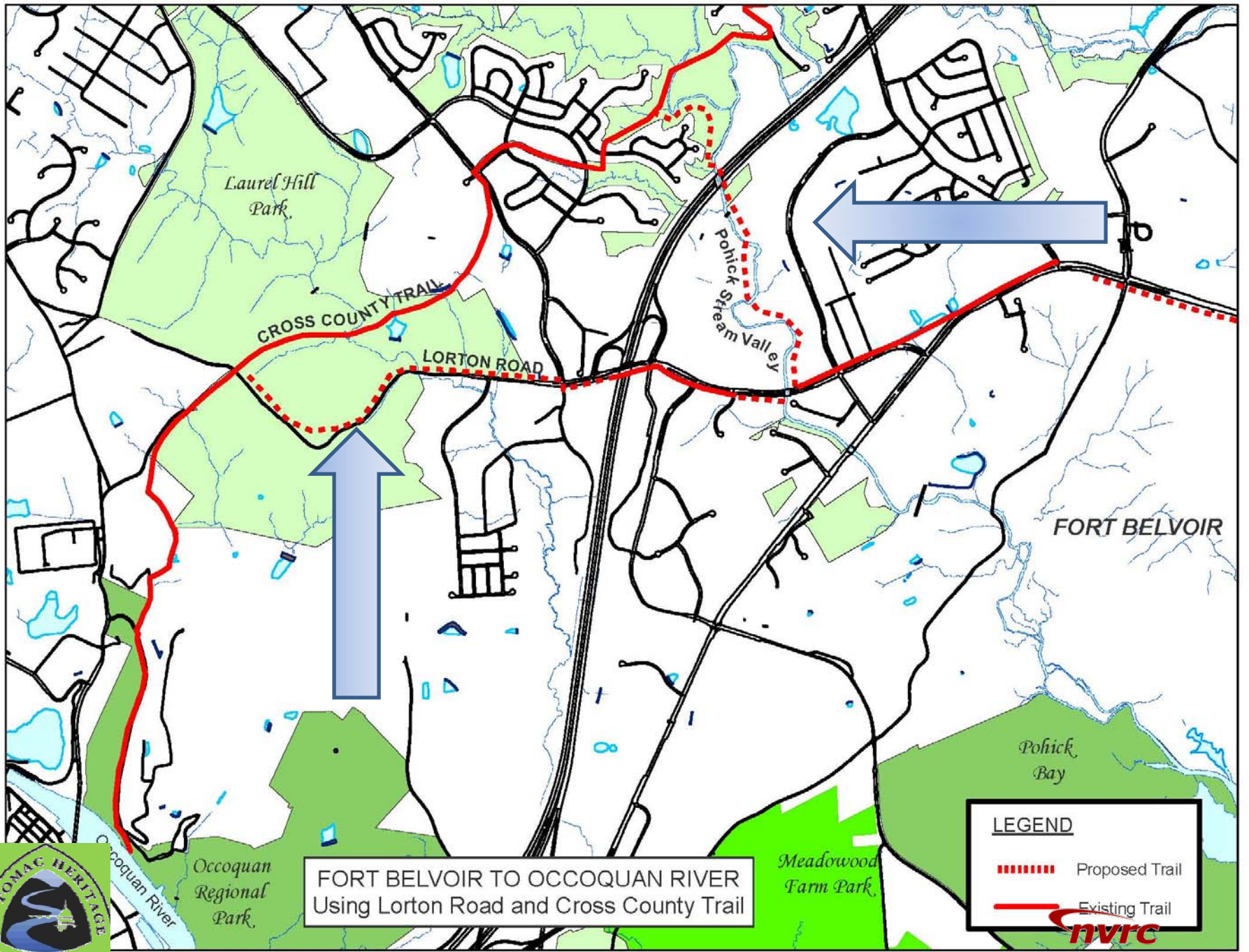
**PHNST Map Legend**

- Project Sites
- ★ Historic Sites
- Non Motorized Boat Access
- Potomac Heritage NST**
- Trail Status**
- Existing
- Planned
- Gap
- Local, Regional, State and Interstate Trails
- Spurs and Connecting Routes
- Water Trail
- Property Type**
- Open Space and Easements
- Local Park
- Regional Park
- State Park
- National Park Service
- National Wildlife Refuge -FWS
- Department of Defense
- Primary Roads
- Railroad
- Potomac River
- County Borders



**Map 7: Woodbridge to Locust Shade**





FORT BELVOIR TO OCCOQUAN RIVER  
Using Lorton Road and Cross County Trail

**LEGEND**

- - - - - Proposed Trail
- Existing Trail

**NVRC**

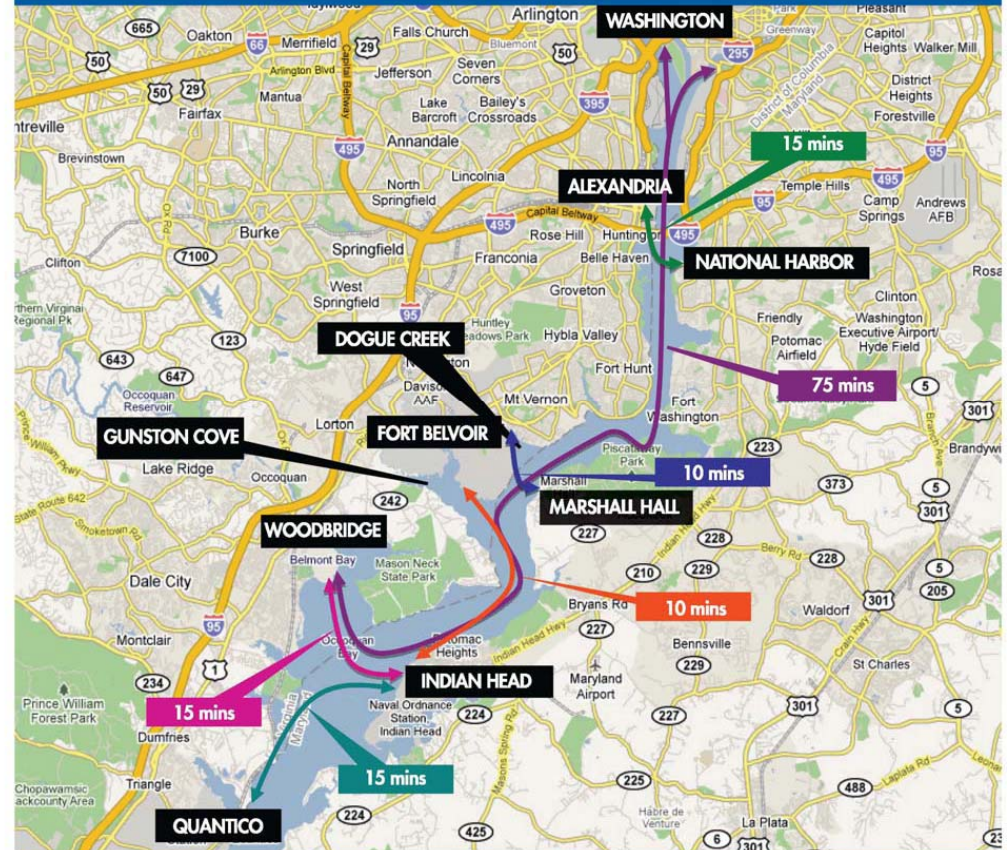




# Lessons Learned

1. Communicate and Coordinate with trail managers
2. Link projects to funding
3. Link transportation connections: VRE, Neighborhoods, adjoining trails, Metro, Bus Routes, Ferry
4. Identify project leaders and priorities

## HOW TO WIN AT THE GAME OF **WWBridge?** BY WATER TAXI



**VISIT THIS WEBSITE**

[www.potomacriverboatco.com/survey](http://www.potomacriverboatco.com/survey)

TO PARTICIPATE IN OUR SHORT, IMPORTANT WATER TAXI SURVEY!





# Wayfinding

## Trail Signage



## Trail Signage, Belmont Bay

[Identity Guidelines for Trail Partners \(3006\):](http://www.nps.gov/pohe/parkmgmt/planning.htm)

<http://www.nps.gov/pohe/parkmgmt/planning.htm>



# Reference Documents

- **Development and Management Plan for the Potomac Heritage National Scenic Trail in Virginia**, February 2006. Prepared by NVRC and the National Park Service.
- **Potomac Heritage NST Interpretive Concept Plan**, Developed by National Park Service, 2004.
- **Virginia Outdoors Plan, 2007**, Virginia DCR,  
[http://www.dcr.virginia.gov/recreational\\_planning/vop.sht](http://www.dcr.virginia.gov/recreational_planning/vop.sht)
- **Potomac Trail Council, Corridor Inventory of the Potomac Heritage National Scenic Trail**, August 2011.
- **A Foundation for Administration, Planning, Management and Interpretation of Potomac Heritage National Scenic Trail Segments and for Coordination among Trail Management Partners: 2011 DRAFT.**
- **Implementation Plan for the Potomac Heritage National Scenic Trail in Prince William County, September 2002.** Prepared by NVRC for the Prince William Park Authority.
- **Implementation Plan for the Potomac Heritage National Scenic Trail in Fairfax County**, September 2002. Prepared by NVRC for the Fairfax County Park Authority.
- **Implementation Plan for the Potomac Heritage National Scenic Trail in Loudoun County, July 2002.** Prepared by NVRC for the Loudoun County Parks and Recreation Department.

# Thank You

Debbie Spiliotopoulos  
Northern Virginia Regional  
Commission

[dspilio@novaregion.org](mailto:dspilio@novaregion.org)

703-642-4631

## Photo Credits:

Patti Pakkala, Mike DePue,  
Tod Kolankiewicz Liz  
Cronauer, Mark Novak,  
Doug Pickford, Don Briggs,  
Kate Rudacille

## Map Expertise:

Sam Kinzer

