



Arlington Initiative to
**Rethink
Energy**

Energy Efficiency Programs Outreach and Education

Arlington Initiative to Rethink Energy

Joan Kelsch

December 17, 20



Arlington Initiative to
**Rethink
Energy**

Be SMART
Think LESS

Arlington Initiative to Rethink Energy AIRE

Arlington Initiative to Rethink Energy (AIRE)
Government Organization

Create Call to Action Liked Message

Timeline About Photos Reviews More

860 likes 0 this week

2 were here 0 this week

View Pages Feed
See posts from other Pages

Finish Your Post
Work on your recently saved draft.

Invite friends to like this Page

230 post reach this week

More Reach. Less Money.
Reach 110,000 people near Arlington Initiative to Rethink Energy (AIRE).
Get started for \$20.00.
Promote Local Business

Status Photo / Video Offer, Event +

Write something...

6 Drafts
Last draft modified Friday, December 11 at 9:53am. See drafts.

9 Scheduled Posts
Next post scheduled for tomorrow at 2:21pm. See posts.

Arlington Initiative to Rethink Energy (AIRE)
Published by Paul-augustine Lauricella (?) · December 12 at 6:00pm ·

Holiday shopping for someone who loves gadgets? Check out these #solar-powered gift ideas!
<http://www.greenamerica.org/livinggreen/solargifts.cfm>

Social Media



Arlington Initiative to
**Rethink
Energy**

Columns [STARTUP MONDAY](#) [LOCAL WOOF](#) [LEGAL INSIDER](#) [ASK ELI](#) [PET OF THE WEEK](#) [JUST REDUCED](#)
[WELLNESS MATTERS](#) [HEALTHY PAWS](#) [RENTAL TRENDS](#) [JUST LISTED](#) [HONEST TEACHER](#) [YWBG](#) [BETHINK ENERGY](#)

Connect    

Rethink Energy: Four Things Every Arlingtonian Should Know About Energy Audits

SPONSORED CONTENT

by ARLnow.com Sponsor – November 28, 2015 at 12:00 pm 1 Comment



This regularly-scheduled sponsored Q&A column is written by the [Arlington Initiative to Rethink Energy team](#) (AIRE). This county program helps you make smart energy decisions that save you money and leaves a lighter footprint on the environment. Got a question? Email us at energy@arlingtonva.us!

- Why get an energy audit?
- What does it cost?
- When should I do it?
- What is the payback?

Here is more information to nosh on over the holiday weekend. *Don't let energy waste gobble up your savings.*

featured local business

A Cleaning Service LLC



P O Box 3294
Arlington, Virginia 22204

703-892-8648
Home Services(2) >> Cleaners(1)

[View All](#)

featured events

- Rosslyn Holiday Market Festival & Bonfire**
December 11 - 10:00 am to 9:00 pm
- Belleconnecta's Self Care Day**
December 12, 10:00 am to 4:00 pm, December 13
- National Chamber Ensemble - Happy Holidays!**
December 12 - 7:30 pm to 9:30 pm
- New Years Eve Extravaganza at Twisted Vines!**
December 31, 7:00 pm to 2:00 am, January 01
- 2016 Mad Rose Tavern's New Years Eve MADsquerade Ball**
December 31 - 9:00 pm to 2:00 am
- Arlington Philharmonic - Ritmos**

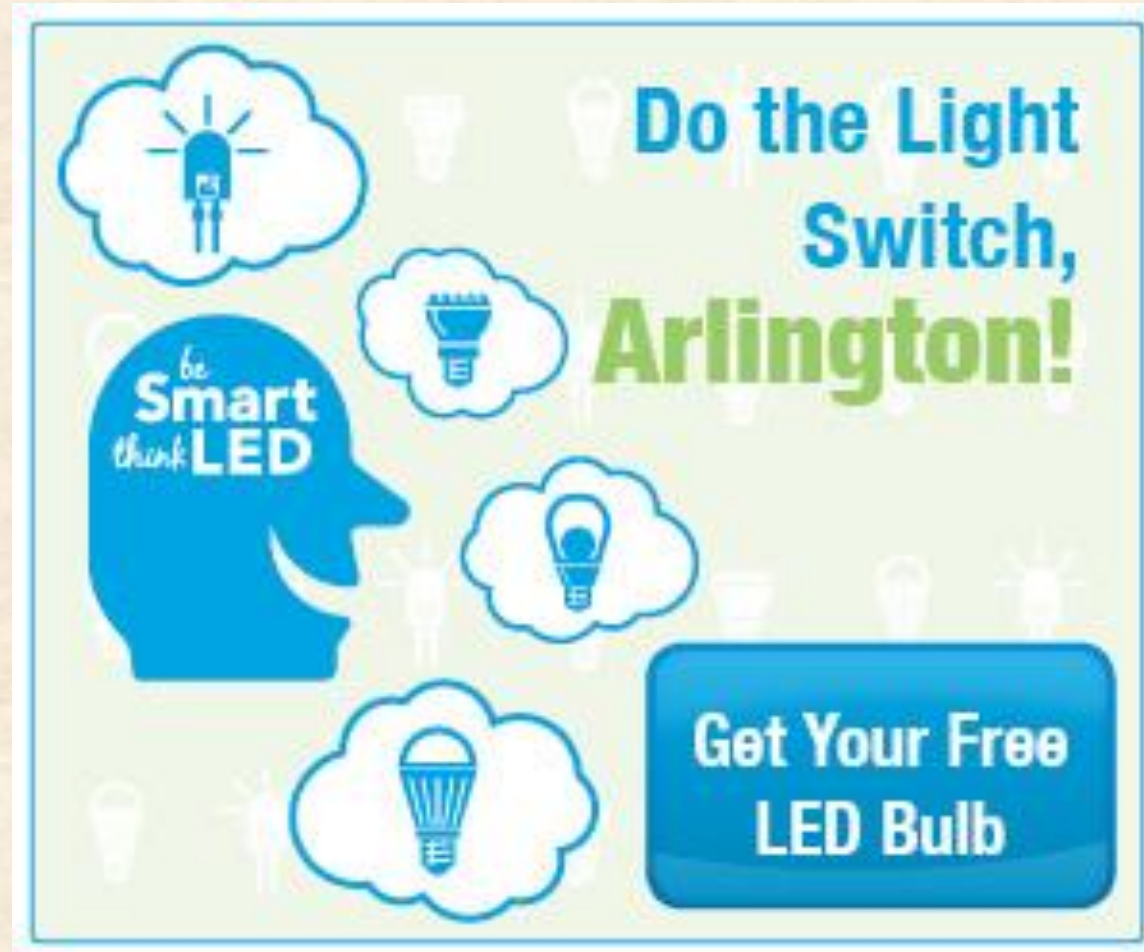


Arlington Initiative to
**Rethink
Energy**

WERA 96.7
RADIO ARLINGTON

Radio Show

AIRE events



Do the Light Switch!

- Central Library
- Saturdays in October from 10am-noon



Energy Journey

- Life Size Board Game
- 3 years

Rethink Energy Challenge

- Seasonal list of simple energy-saving actions
- Raise energy awareness
- Gather emails for an energy Listserv
- Residents can take the challenge at AIRE events or [on our website](#)

Arlingtonians are saving energy! *To date...*



1,483 pledges



3,377 actions pledged



\$52,900 annual savings

Lighting Education

YOUR GUIDE TO LED LIGHTING

DO THE LIGHT SWITCH TO SAVE ENERGY & MONEY

YOUR SHOPPING GUIDE TO LED LIGHT BULBS

Consider both brightness and color when buying light bulbs. Use the chart below to select energy efficient LED bulbs.

Lumens = Brightness
Watts = Energy

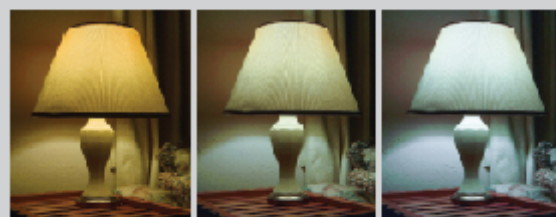
Watts (energy)	Lumens (brightness)
40	450
60	800
75	1100
100	1600
150	2600

You used to look for

Now you look for

Light bulbs come in an array of colors. Choose the color of light that you prefer.

Kelvin (K) = Light Color

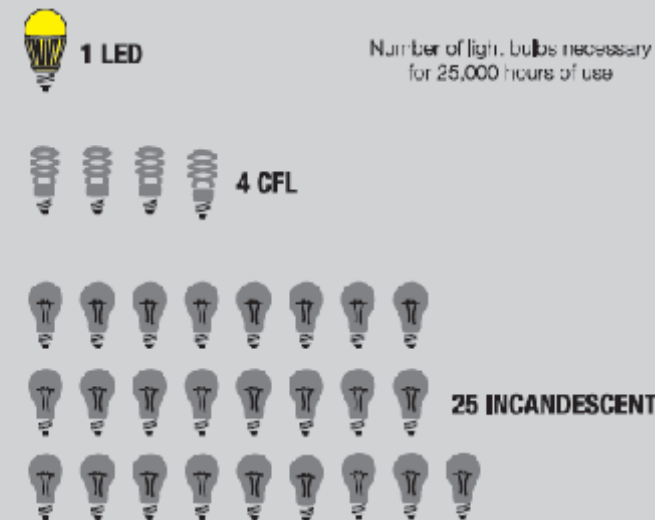


2700K
warm & soft white

4000K
cool & natural white

5500K
natural & blue daylight

LED BULBS LAST 25 TIMES LONGER



Source: U.S. Environmental Protection Agency's ENERGY STAR Program

SAME BRIGHTNESS, LESS ENERGY



Wattages are approximate. Source: Cree, Inc.

ENERGY COST COMPARISON

1 BULB FOR ONE YEAR



Based on 1 light fixture turned on 3 hours per day per Dominion Virginia Power's (DVP) electricity rate (11 cents/kWh). Rounded to nearest 10 cents.

ENTIRE HOUSE FOR ONE YEAR

Entire house = 25 light fixtures turned on 3 hours per day



Based on 25 light fixtures turned on 3 hours per day per DVP's electricity rate. Rounded to nearest \$5.



Arlington Initiative to
**Rethink
Energy**

Kill-a-Watt



Borrow from
Arlington Pubic
Libraries

Solar Co-op



- Virginia SUN, ACE, AIRE
- Reduces costs by 30% through bulk purchasing
- 290 roofs screened
- 36 signed contracts to date
- Nearly a 50% increase in # of solar systems in Arlington (81 before co-op)



Arlington Initiative to
**Rethink
Energy**





Arlington Initiative to
**Rethink
Energy**

Energy Masters

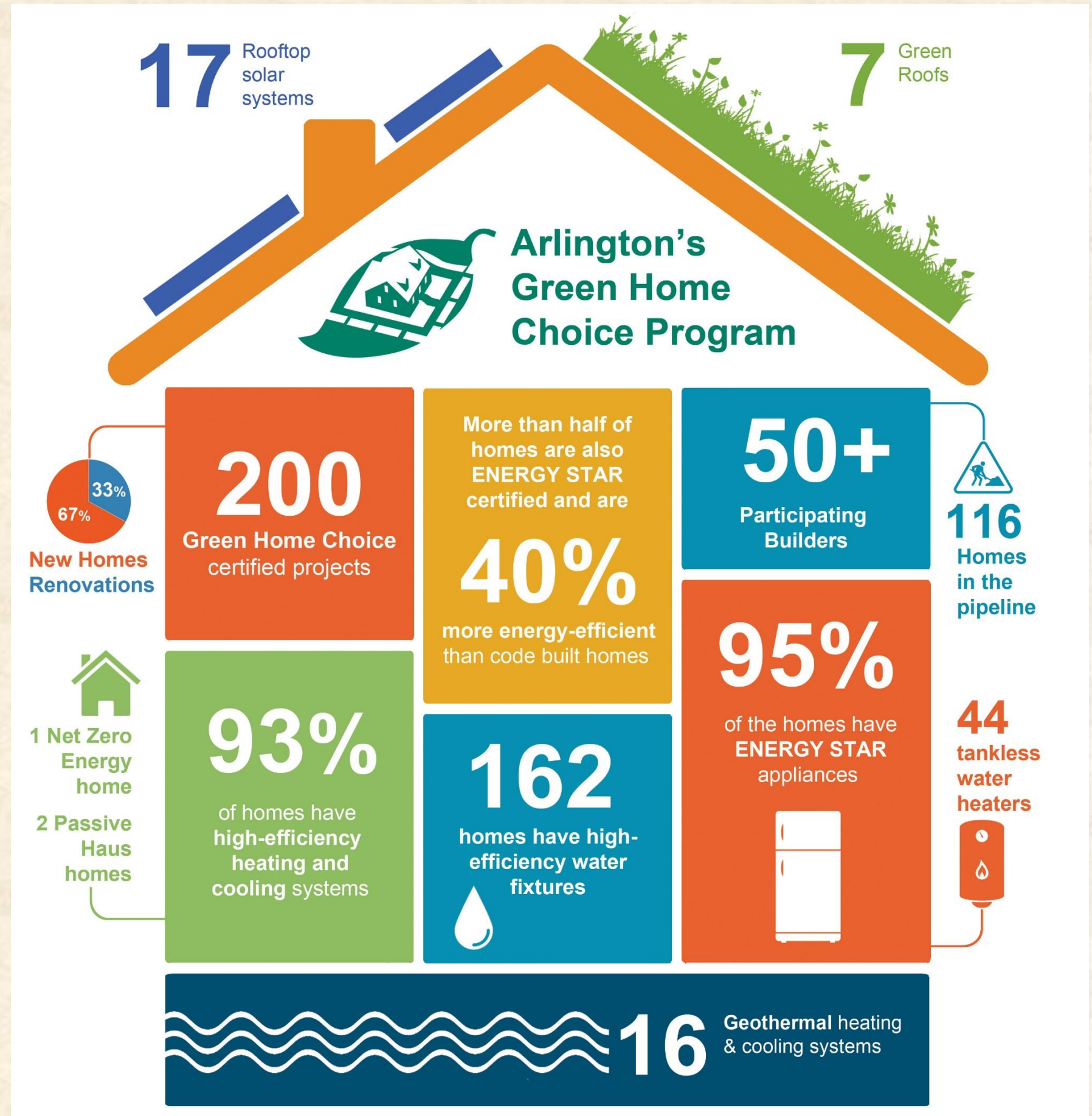


Partner with
Arlingtonians for a
Clean Environment



Arlington Initiative to Rethink Energy

Green Home Choice





Energy Spotlight

2012 Green Home Choice Gold Award



Arlington Initiative to
**Rethink
Energy**



ABOUT AIRE

The Arlington Initiative to Rethink Energy (AIRE) helps our community make smart decisions about energy and supports individual actions to sustain and improve Arlington's quality of life. We are committed to energy practices that will make Arlington a more prosperous, healthful, and secure place to live, work, and play.

AIRE supports owners, architects, and builders of sustainable homes that are energy- and resource-efficient and provide a healthy living environment. Homes that achieve the Green Home Choice certification are, on average, 40 percent more energy-efficient than the building code requires.

Through programs like Green Home Choice, AIRE educates and encourages Arlington residents and businesses to use energy wisely, inspiring daily actions that will make a lasting difference. By working together, we can ensure the health of our community for the long term. Come join us!

Visit us online at
www.ArlingtonEnergy.us

THE STRUCTURE

This Arlington brick colonial, originally constructed in the mid-1940s, had two above-grade levels with uninsulated walls and an unfinished basement. In 2010, the owners renovated and added onto the house while participating in the Green Home Choice program to increase the home's functionality in the most sustainable way. The renovation expanded the two upper levels and finished the basement, more than doubling the home's size from about 1,300 to 2,800 square feet.

ENERGY IMPROVEMENTS

Building Envelope Insulation and Sealing – The most important energy feature in any building is the “envelope”—the walls, floors, and ceilings. Insulating the envelope is important, but even more beneficial is making the building airtight. The entire building envelope was renovated with spray foam insulation, which not only provides a good level of insulation but also acts as a sealant in areas where air leaks in and out of a home.

Heating and Air-Conditioning Upgrades – Most of a home's energy is consumed by its mechanical system, otherwise known as heating and air conditioning. The original home had a traditional gas boiler and forced-air cooling system. The new home is heated and cooled by an all-electric geothermal—or ground-sourced—heat pump system, which uses the natural heat of the earth for heating and cooling. The



Case Studies

How to Build a Better Home Video Series



Arlington Initiative to
**Rethink
Energy**





Arlington Initiative to **Rethink Energy**



2 Hotel
18 Office
4 Retail
6 Residential
2 Worship

32 rebates issued to Arlington properties

75% of new fixtures installed are efficient LED lights

6,000+ Inefficient Fixtures Replaced

\$116,598 in AIRE rebates were leveraged to **save more than \$350,000** in annual electricity costs

All projects reduced lighting wattage by **>50%**

3.4 Million kWh saved annually by Arlington properties that switched to more efficient lights

That's equal to the energy used by **213 homes.**

The amount of energy saved is equal to the energy used by **3 Arlington Mill Community Centers**



Commercial Lighting Rebate Program



Arlington Initiative to
**Rethink
Energy**

Joan Kelsch

Arlington Initiative to Rethink Energy

jkelsch@arlingtonva.us

www.environment.arlingtonva.us/energy