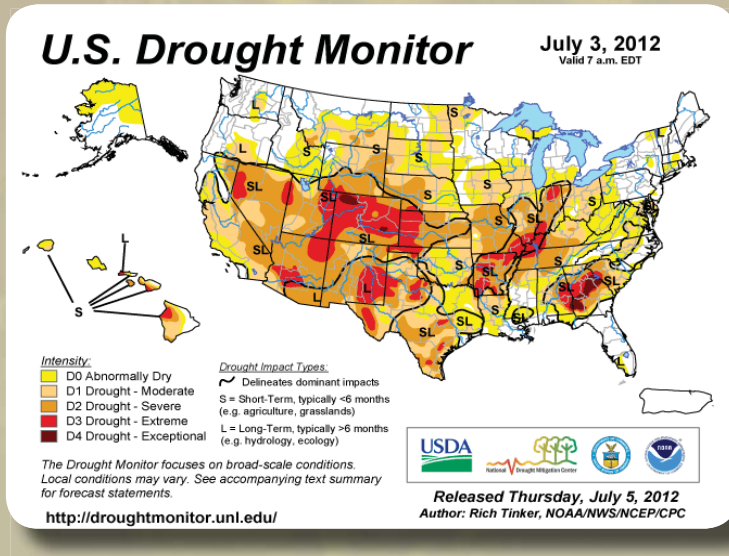


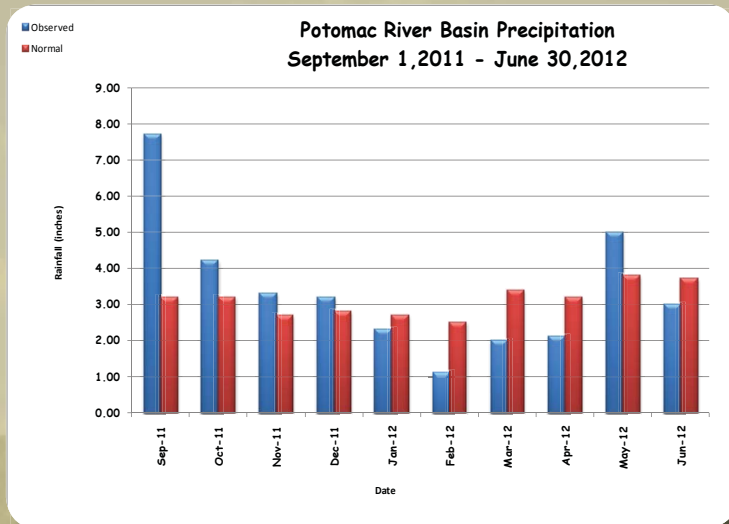
# Washington Metropolitan Region Drought and Water Supply Status and Outlook - July 2012

## Metropolitan Washington Water Supply and Drought Awareness Response Plan - Drought Stage NORMAL



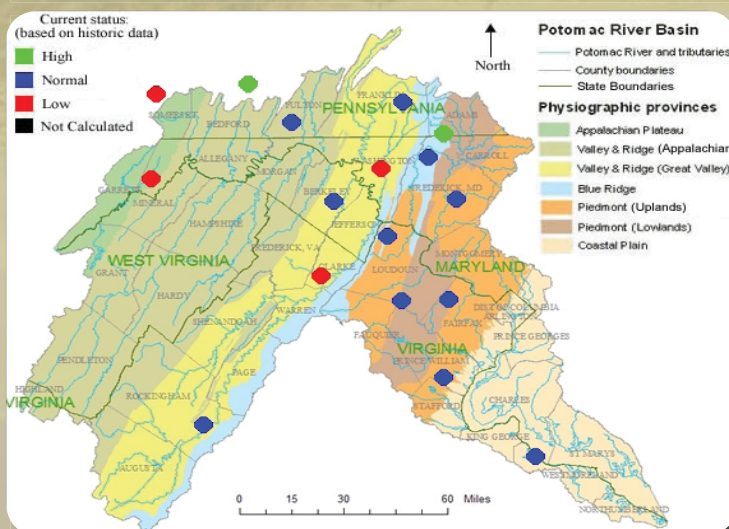
### U.S. DROUGHT MONITOR

As expected, our region has responded to the extremely high temperatures throughout the month. The U.S. Drought Monitor released on July 5th indicates that most of the Potomac River Basin is abnormally dry (D0). The southeastern section of Maryland remains moderately dry (D1). SOURCE: NOAA Climate Prediction Center



### POTOMAC BASIN PRECIPITATION DATA June 2012 - Below Average

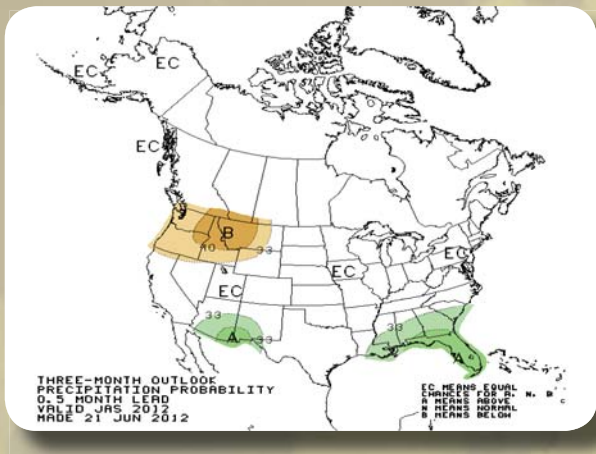
The Potomac River Basin received 3.0 inches of precipitation in the month of June which is 0.7 inches below normal. From January 1, 2012 through July 4, 2012 the Basin received 16.8 inches of precipitation, 3.0 inches below normal. SOURCE: Middle Atlantic River Forecast Center



### GROUNDWATER STATUS July 2012 - Normal to Low

The most recent groundwater map indicates that most of the groundwater wells monitored are at normal (blue) to low (red) throughout the entire Basin - a change from the high levels reported last month. SOURCE: USGS



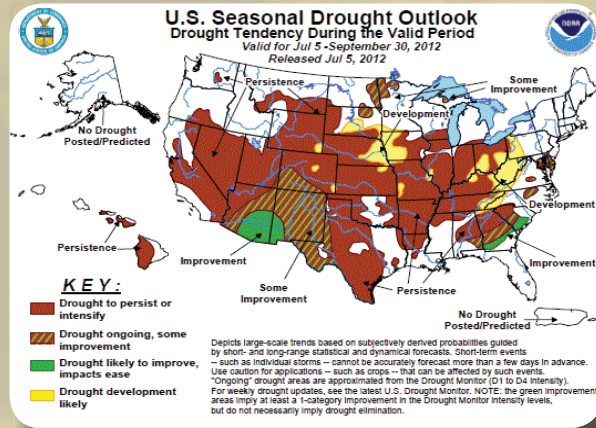


### THREE MONTH PRECIPITATION OUTLOOK

The Climate Prediction Center of the National Weather Service produces three month precipitation forecasts for the United States. According to the July through September outlook, our region has an equal chance of above, below, or normal amounts of precipitation. SOURCE: NOAA Climate Prediction Center

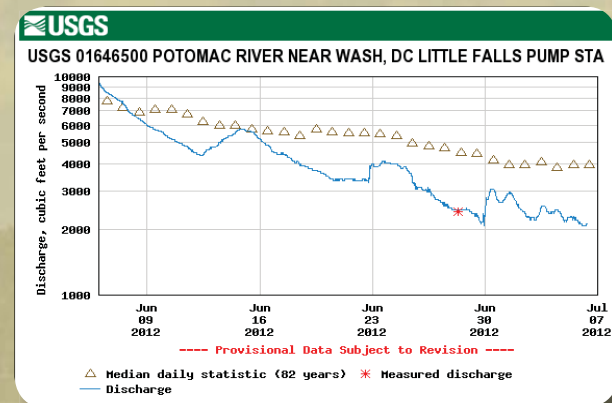
### RESERVOIR STATUS July 2012

There is a 24 percent conditional probability that natural Potomac flow will drop below 600- to 700-million gallons per day (MGD) at Little Falls through December 31 of this year; at these flow levels, water supply releases from Jennings Randolph and Little Seneca Reservoirs may occur. Releases occur when predicted flow is less than demand plus a required flow-by. Demand ranges from 400 to 700 MGD during the summer months and the minimum flow-by at Little Falls is 100 MGD. Source: ICPRB



### SEASONAL DROUGHT OUTLOOK July 2012

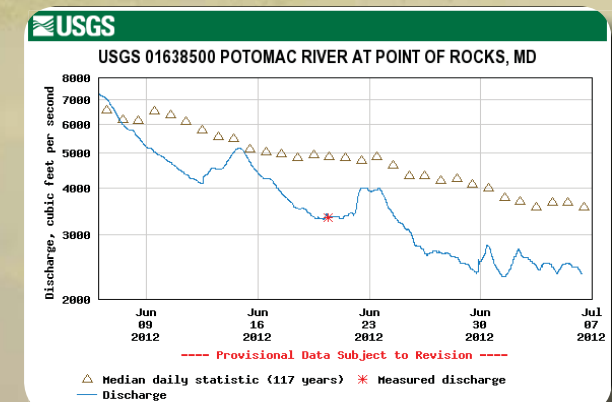
The seasonal drought outlook released on July 5, 2012 indicates that drought conditions could improve in the eastern sections of the Potomac River Basin. Note the prediction of drought persistence throughout most of the United States. SOURCE: NOAA Climate Prediction Center



### POTOMAC RIVER FLOW POINT OF ROCKS and LITTLE FALLS

Below Median Levels

Instantaneous flow readings on July 6th at Point of Rocks (2,350 cfs/median 3,550) and Little Falls (2,120 cfs/median 3,960,) indicate that flows are below median levels. SOURCE: USGS



For additional information about this report contact Christine Howard at [choward@mwco.org](mailto:choward@mwco.org)

Water, Use it Wisely

