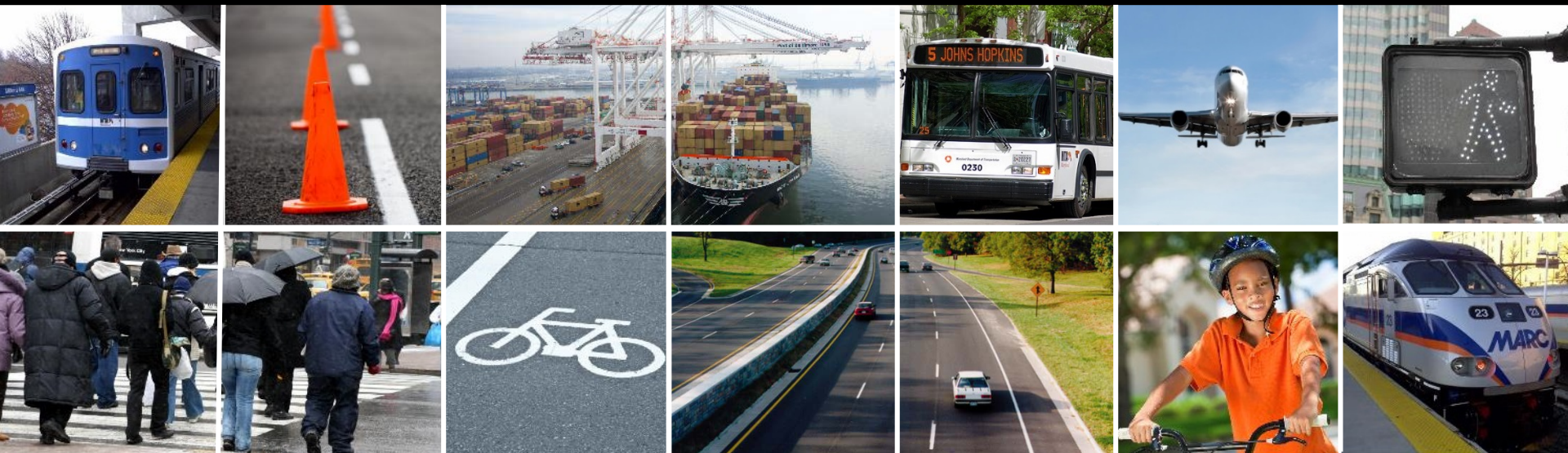




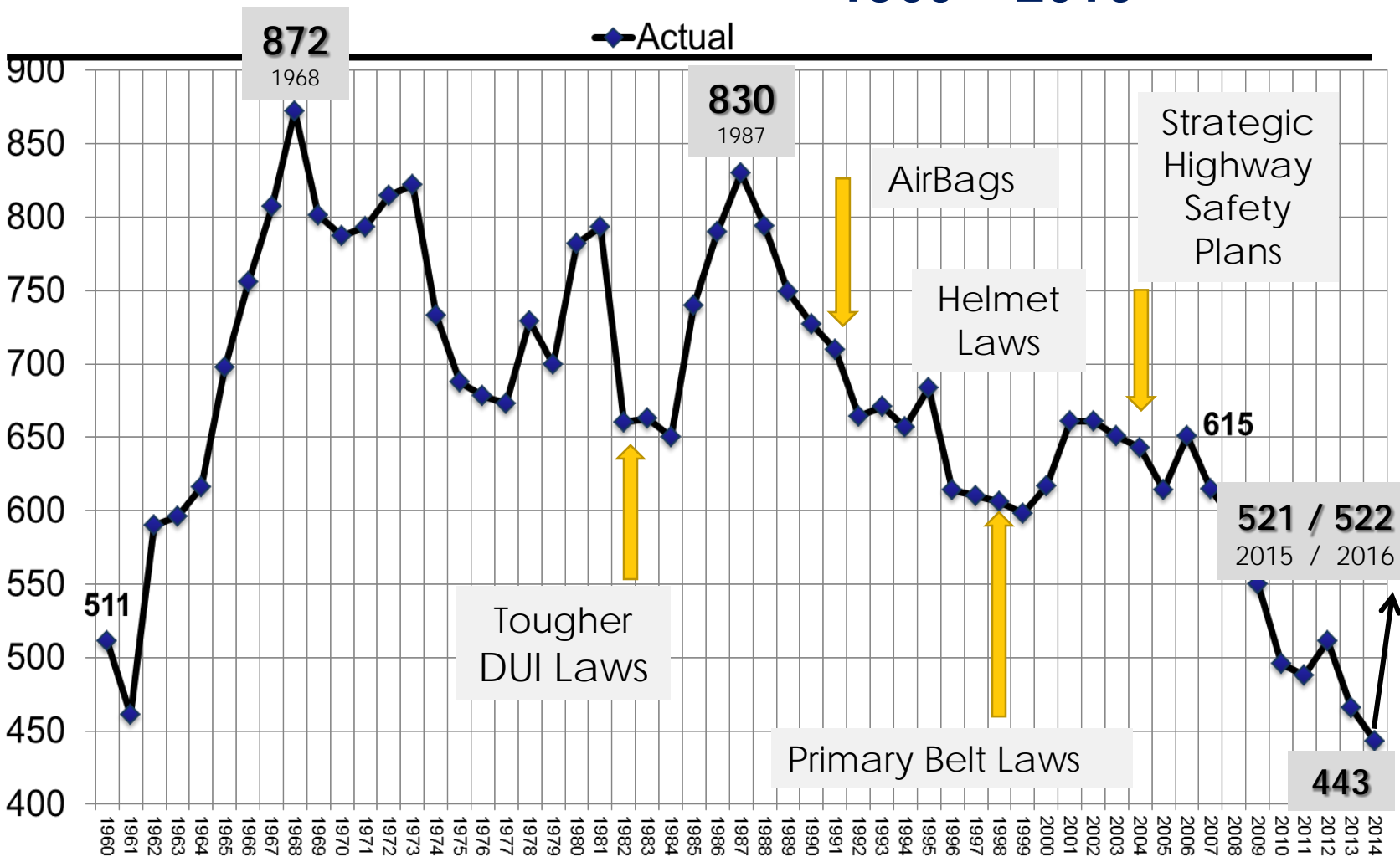
*Transportation Solutions to
Connect Our Customers
to Life's Opportunities*

Maryland's Strategic Highway Safety Plan



Historical Trends

Traffic Fatalities on MD Roads 1960 – 2016



Progress in Fits & Starts

Increased Exposure



3.2 trillion
miles driven on U.S. roads
in **2016**

Maryland VMT:

2015: ↑ 1.6% from 2014

2016: ↑ 1.9% from 2015

Over 2 BILLION
VMT more than 2014



Preliminary VMT Data

STATE HIGHWAY ADMINISTRATION

Estimated Monthly Distribution of Annual Vehicle Miles of Travel

	2013 VMT (Millions)	2014 VMT (Millions)	2015 VMT (Millions)	2016 VMT (Millions)	2017 VMT* (Millions)	Percent Change 2013-2014	Percent Change 2014-2015	Percent Change 2015-2016	Percent Change 2016-2017
Jan	4281	4260	4153	4003	4590	-0.49%	-2.51%	-3.61%	14.7%
Feb	4369	4373	4369	4642	5010	0.09%	-0.09%	6.25%	7.9%
Mar	4629	4588	4562	4974	5070	-0.89%	-0.57%	9.03%	1.9%
Apr	4785	4784	4787	4820	5272	-0.02%	0.06%	0.69%	9.4%
May	4908	4885	4892	4840	5372	-0.47%	0.14%	-1.06%	11.0%
Jun	4895	4911	4901	5041	25,314 To Date	0.33%	-0.20%	2.86%	
Jul	4935	4940	5189	5210		0.10%	5.04%	0.40%	
Aug	4953	4905	5064	5171		-0.97%	3.24%	2.11%	
Sep	4780	4809	4936	5020		0.61%	2.64%	1.70%	
Oct	4731	4779	4912	5006		1.01%	2.78%	1.91%	
Nov	4625	4567	4776	4918		-1.25%	4.58%	2.97%	
Dec	4566	4599	4773	4758	60 Billion @ Year End ?	0.72%	3.78%	-0.31%	
TOTAL	56,457	56,400	57,314	58,403		-0.10%	1.62%	1.90%	



How Do We Reverse the Deadly Highway Trend

Maryland's Strategic Vision:
Since 2010 ...

ZERO
TOWARD ZERO DEATHS
== MARYLAND ==
EVERY LIFE COUNTS



Maryland's Strategic Highway Safety Plan

Overarching Goal:

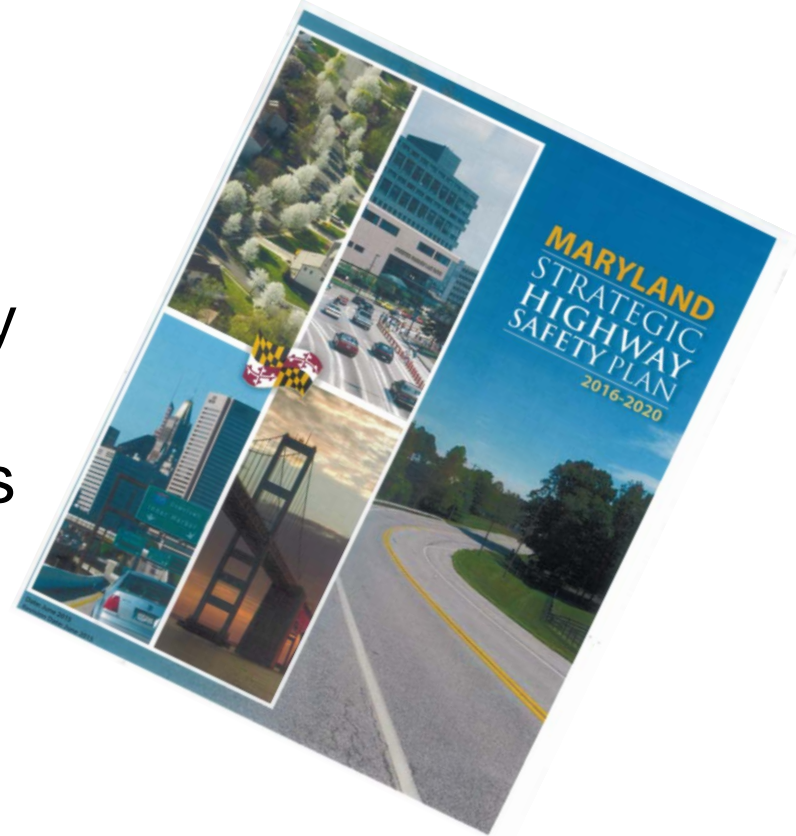
Toward *Zero* Deaths

The overall goal of Maryland's Strategic Highway Safety Plan is to reduce Fatalities and Serious Injuries by ½ by 2030.

Interim Targets:

of Fatalities (2020): 394

of Serious Injuries (2020): 2,939



Approved by SHSP Executive Council

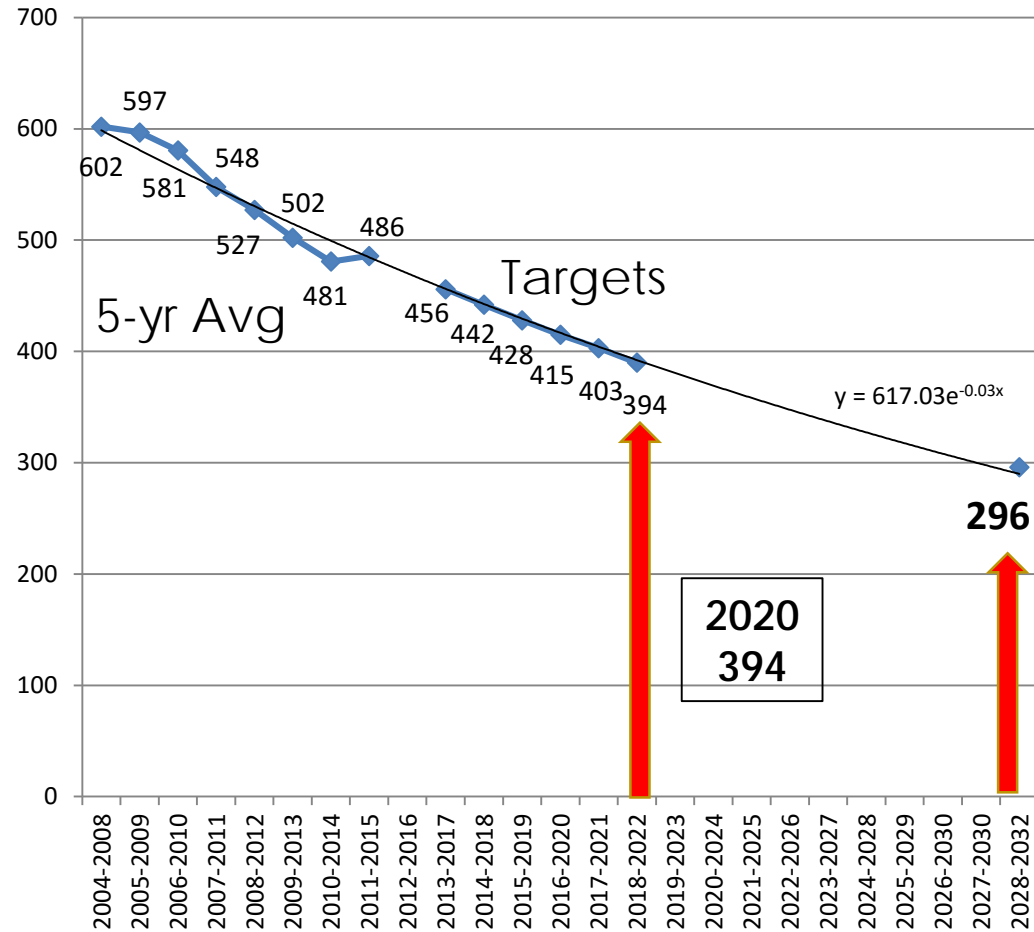


Toward Zero Deaths (TZD)

- Fixed end point
- (1/2 of 2008 by 2030)
- Exponential trend line fitted

Five Year Rolling Averages used to set trend line to Final Target Point

Annual Targets are mid-point years of 5-yr buckets



Considered by SHSP Executive Council

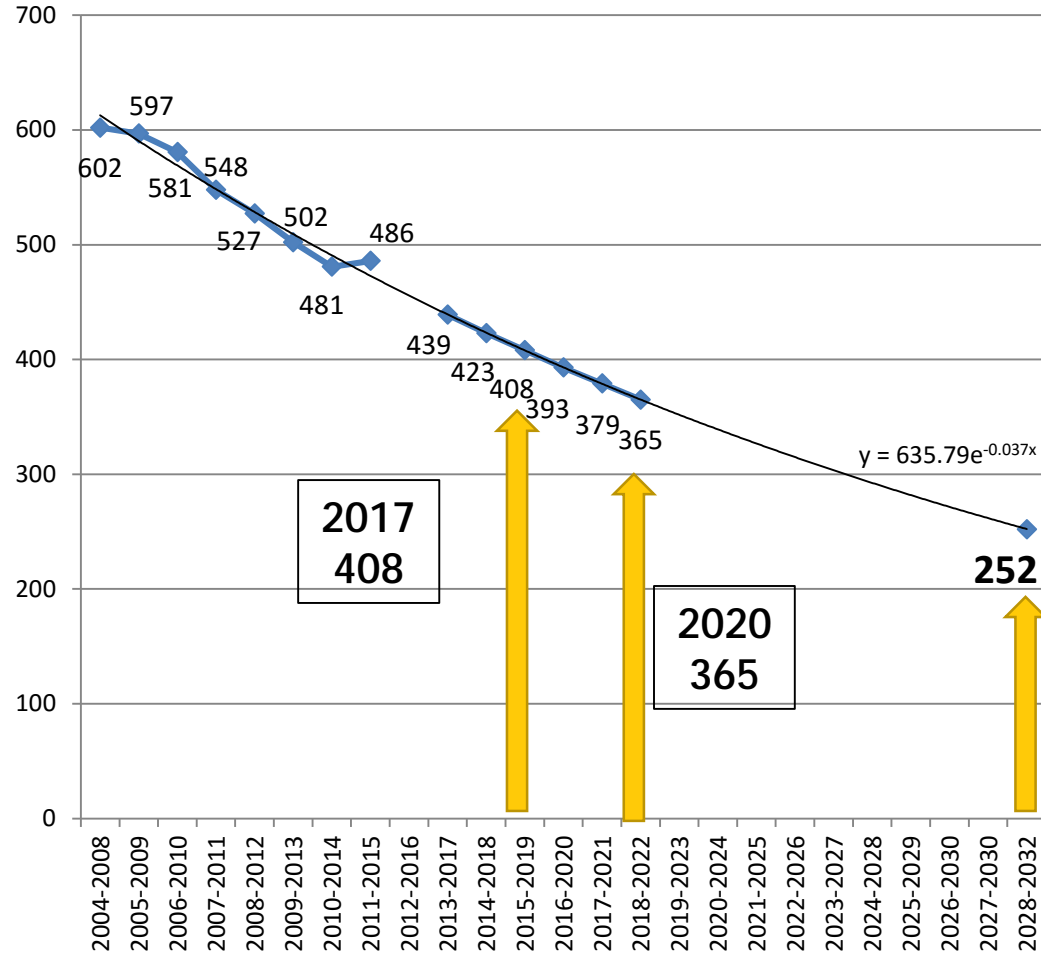


DATA SPEAKS:

Data Trends

- No fixed end point
- Exponential line fit to historical data

Targets Change Every Year



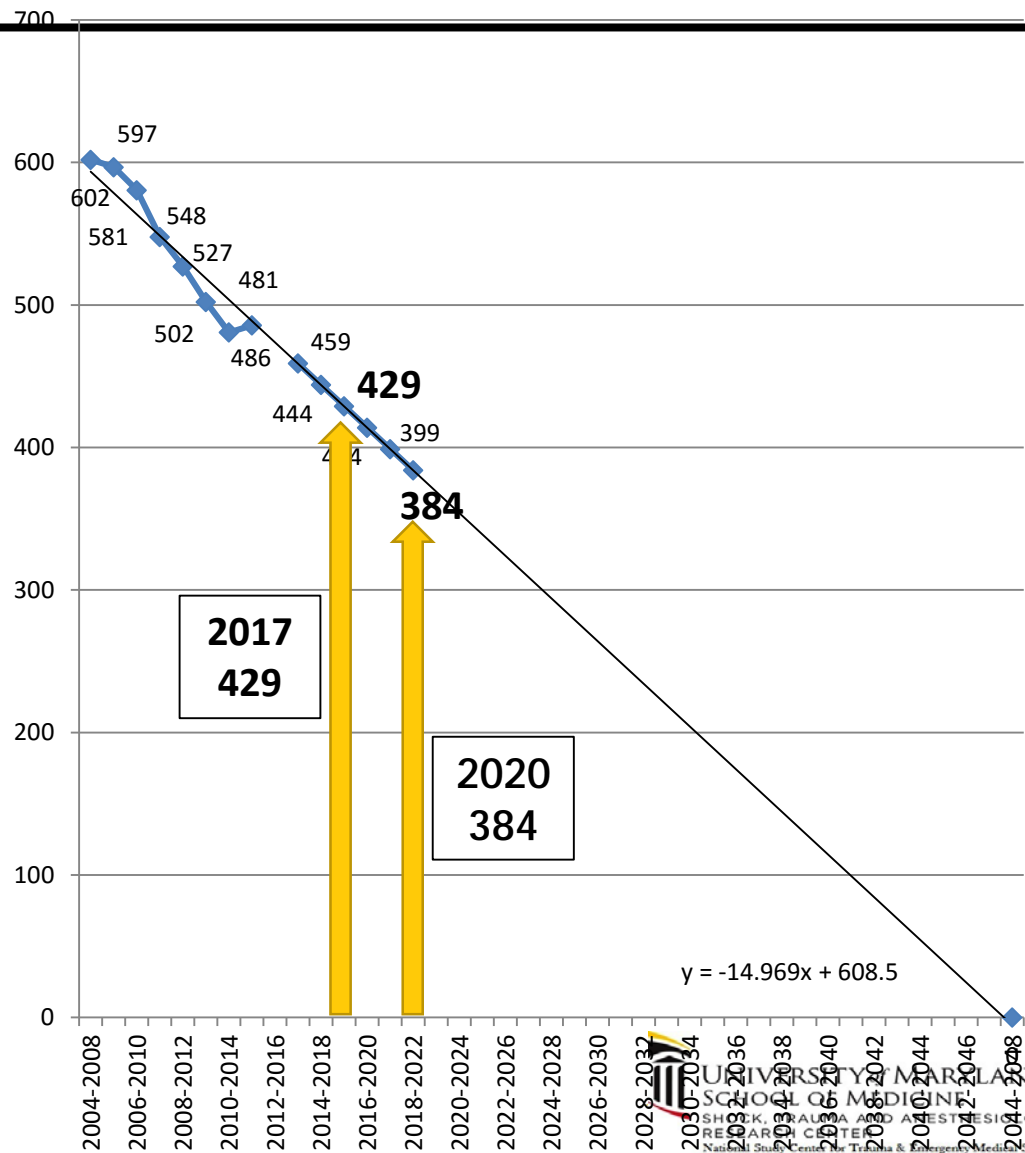
Considered by SHSP Executive Council



Road to Zero Zero fatalities by 2046

- Fixed endpoint of
0 fatalities by 2046

- Linear trend line



Required Performance Measures Strategic Highway Safety Plan

FHWA Mandated Safety Performance Measurements:

Required by: HSP – July 1st // HSIP – August 31st 2017

of Fatalities (based on FARS)

Fatality Rate (based on FARS)

of Serious Injuries (based on State data)

Serious Injury Rate (based on State data)

Combination of:

PED Fatalities& Serious Injuries AND

Bicycle Fatalities & Serious Injuries

(based on FARS definitions & Combined Data)



Maryland's SHSP Path Forward



➤ TZD Goal Statements:

▪ Fatalities & Serious Injuries Only

- Provides for Good Future Target Analysis w/ Historical Analysis

➤ New Federal Mandated Goal Statements

▪ Utilizing 5-yr Rolling Averages w/ FARS or State Data

- Fatafs; Fatality Rate; Serious Injuries; Serious Inj Rate;
and Combined PED/Bike

➤ Emphasis Areas (Utilizing More Readily Available State Data)

▪ Utilize TZD Methodology

- Sets solid targets and eliminates rolling targets
- Does NOT Require Yearly Target Updates



"If you aim at
nothing, you will hit
it every time"

Author Unkown

TOWARD **ZERO** DEATHS
MARYLAND



How do We Reverse the Deadly Highway Trend and Move Toward Zero Deaths?

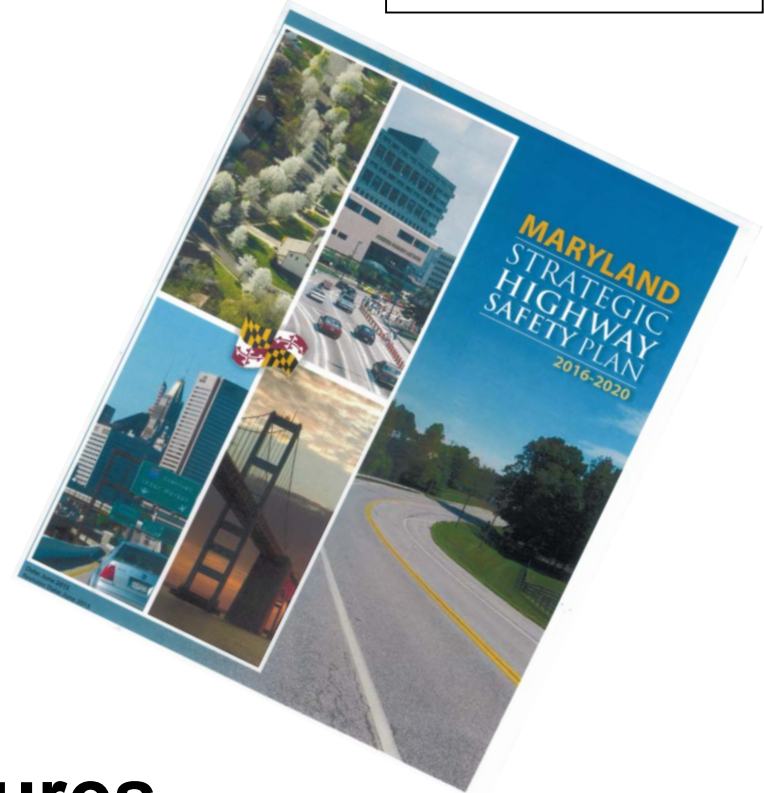
STEP #1



Strategic Vision:

Toward *Zero* Deaths

**Goal Statements
& Performance Measures**



How do We Reverse the Deadly Highway Trend and Move Toward Zero Deaths?

Addressing Risky Behaviors

- Aggressive Driving
- Distracted Driving
- Speeding
- Occupant Protection
- Impaired Driving

STEP #2



How do We Reverse the Deadly Highway Trend and Move Toward Zero Deaths?

Engineering Considerations

STEP #2

- Run-Off-Road
- Intersection Safety
- Work Zones



How do We Reverse the Deadly Highway Trend and Move Toward Zero Deaths?

Creating a Safety Culture

STEP #3

So, What's Culture?



An examination from:

- 1) Personal Perspective
- 2) Community Perspective



Reversing the Deadly Highway Trend

SAFETY PLANNING: Locally Developed & Locally Owned



What's in your Plan ?

Strategic Highway Safety Plan

Hypothetical Washington Region Targets

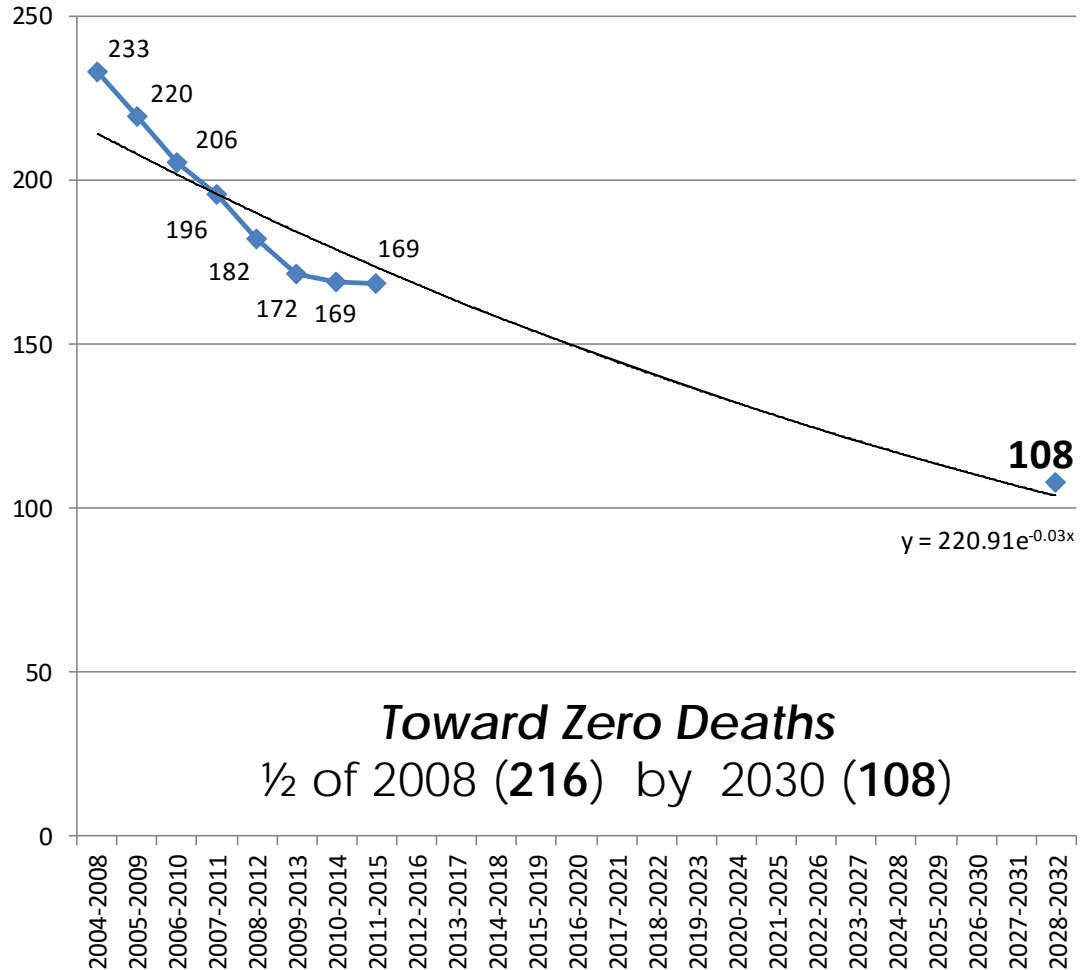
Overall Fatality Goals

Total of 4 Counties

Montgomery
Prince George's
Frederick &
Charles

Interim yearly goals

- 2017 - 154**
- 2018 - 150**
- 2019 - 145**
- 2020 - 141**



Reversing the Deadly Highway Trend



Culture

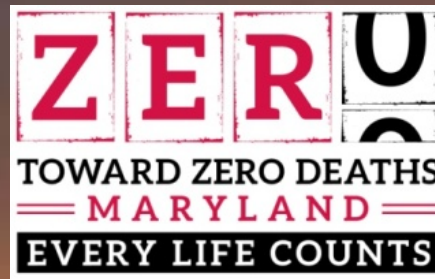
*It's What
We Do
Around
Here!*



An Unforgiving Place!



JOIN the JOURNEY On Our Road to Zero



Thomas J. Gianni
410-787-4014
tgianni@mdot.state.md.us

