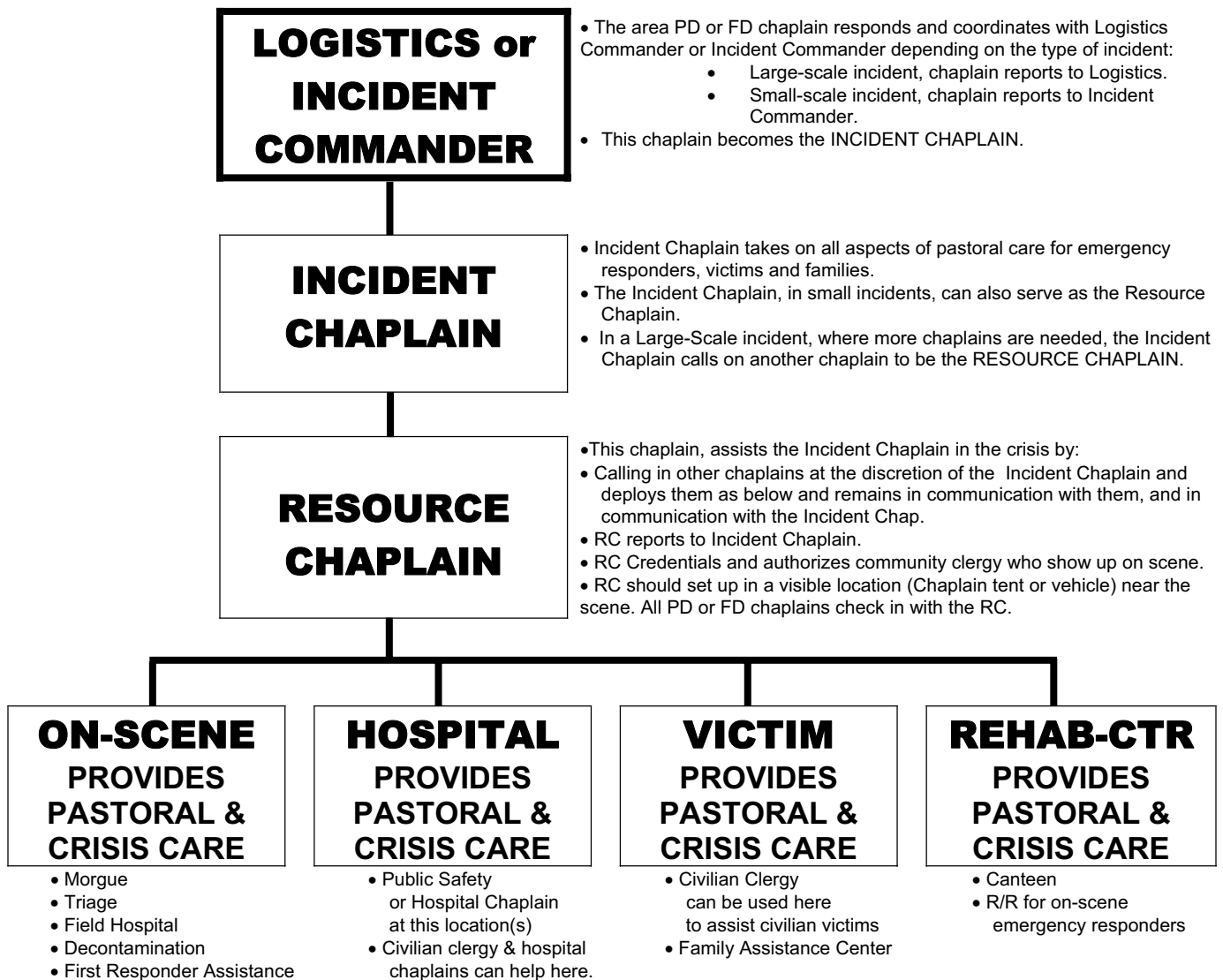


# PUBLIC SAFETY CHAPLAIN DEPLOYMENT - SOP

## MWCOC AREA • REVISED FEBRUARY 2006



### NOTES:

- This chart applies to **critical incidents involving death of a public safety officer** (police, fire, EMS, federal, state)
- This chart also applies to **critical incidents involving mass casualties** of the public.
- All public safety chaplains (police and fire) must show their departmental issued ID and be visible as such.
- All public safety chaplains must check in with Resource Chaplain for assignment.
- All community clergy that show up on the scene, who are not credentialed public safety chaplains, would need to check in with the Resource Chaplain and show proof of clergy status.

### QUALIFICATION STANDARDS OF MWCOC PUBLIC SAFETY CHAPLAINS

#### **All MWCOC CHAPLAINS MUST BE CERTIFIED IN ANY OF THE FOLLOWING DISCIPLINES:**

- Basic, Senior or Master Level Training Credentials from the International Conference of Police Chaplains (ICPC)
- Certificate of Basic or Advanced Fire Chaplaincy from the Federation of Fire Chaplains (FFC)
- Basic or Advanced Level Certification in Critical Incident Stress Management (CISM) or CISM Resiliency Training.
- Basic or Advanced Level Certification in Pastoral Crisis Intervention (PCM)
- Certification in Training in Mass Casualty Incidents/Fatality Response.

#### **PLUS, ALL MWCOC CHAPLAINS MUST:**

- Be duly authorized by their jurisdiction's Police or Fire Chief and carry departmental credentials testifying to this.
- Undergo a background investigation in order to become a chaplain of the local public safety department.
- Undergo regular training in police or fire chaplaincy and in Critical Incident Response through their department.