



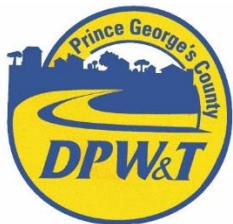
Rushern L. Baker, III
County Executive

Department of Public Works and Transportation

Metropolitan Washington Council of Governments
Regional Bus Sub-Committee Briefing

Overview of Prince George's County DPW&T Transportation Program

Tuesday, July 22, 2014



Darrell B. Mobley, Director



Purpose

The purpose of this presentation is to:

- Familiarize the audience with the transportation services provided by the Prince George's County Department of Public Works & Transportation (DPW&T);
- Provide an overview of **TheBus**, **Call-A-Bus** and **Call-A-Cab** transportation services;
- Provide an overview of the T.R.I.P. Center;
- Provide an update on current transit initiatives within the County; and
- Discuss challenges to providing efficient transit service.



Prince George's County

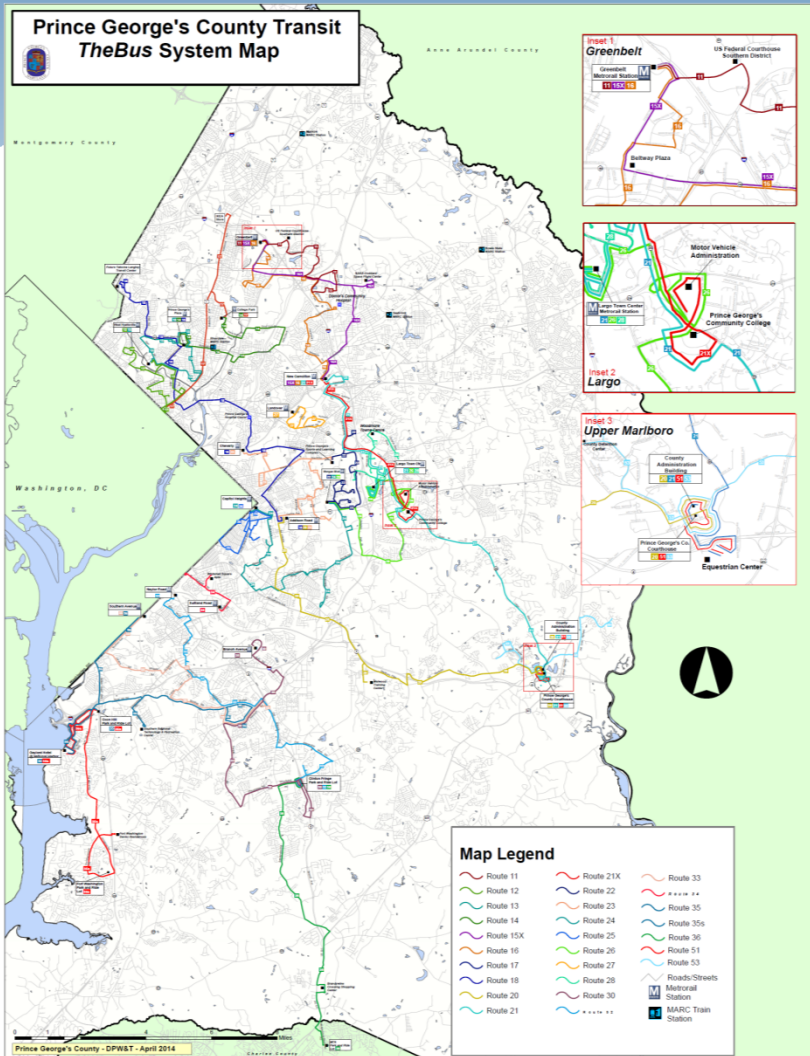
DEPARTMENT OF PUBLIC WORKS & TRANSPORTATION

The Prince George's County Department of Public Works & Transportation (DPW&T) provides:

- Fixed – Route Transit Service via, ***TheBus***;
- ADA/Paratransit Service via, ***Call-A-Bus***;
- Taxi Service via, ***Call-A-Cab***;
- Roadway planning, design, engineering, construction & maintenance of over 1,900 miles of roadway in Prince George's County; and
- Management of Traffic Operations via the Traffic Operations Center (TRIP).



Prince George's County Map & Bus Route Schedule



36 & Clinton-Pinefield **THE BUS** Prince George's County Transit

To Mattawoman Beantown Road Monday-Friday						To Clinton Fringe Parking Lot Monday-Friday					
Leave Clinton Fringe Parking Lot [P]	Brandywine Rd. @ Surratts Rd.	Brandywine Rd. @ Groveton Dr.	Gwynn Park High School	Brandywine Crossing	Arrive Mattawoman Beantown Rd.	Leave Mattawoman Beantown Rd.	Brandywine Crossing	Gwynn Park High School	Brandywine Rd. @ Groveton Dr.	Brandywine Rd. @ Surratts Rd.	Arrive Clinton Fringe Parking Lot [P]
#1	#4	#7	#8	#10	#11	#11	#12	#14	#15	#18	#21
-	-	-	-	-	-	6:00	6:04	6:12	6:18	6:23	6:30
6:00	6:08	6:12	6:19	6:26	6:33	6:40	6:44	6:52	7:58	8:03	7:10
6:40	6:48	6:52	6:59	7:06	7:13	7:20	7:24	7:32	7:38	7:43	7:50
7:20	7:28	7:32	7:39	7:46	7:53	8:00	8:04	8:12	8:18	8:23	8:30
8:00	8:08	8:12	8:19	8:26	8:33	8:40	8:44	8:52	8:58	9:03	9:10
8:40	8:48	8:52	8:59	9:06	9:13	9:20	9:24	9:32	9:38	9:43	9:50
9:20	9:28	9:32	9:39	9:46	9:53	10:00	10:04	10:12	10:18	10:23	10:30
10:00	10:08	10:12	10:19	10:26	10:33	10:40	10:44	10:52	10:58	11:03	11:10
10:40	10:48	10:52	10:59	11:06	11:13	11:20	11:24	11:32	11:38	11:43	11:50
11:20	11:28	11:32	11:39	11:46	11:53	12:00	12:04	12:12	12:18	12:23	12:30
12:00	12:08	12:12	12:19	12:26	12:33	12:40	12:44	12:52	12:58	1:03	1:10
12:40	12:48	12:52	12:59	1:06	1:13	1:20	1:24	1:32	1:38	1:43	1:50
1:20	1:28	1:32	1:39	1:46	1:53	2:00	2:04	2:12	2:18	2:23	2:30
2:00	2:08	2:12	2:19	2:26	2:33	2:40	2:44	2:52	2:58	3:03	3:10
2:40	2:48	2:52	2:59	3:06	3:13	3:20	3:24	3:32	3:38	3:43	3:50
3:20	3:28	3:32	3:39	3:46	3:53	4:00	4:04	4:12	4:18	4:23	4:30
4:00	4:08	4:12	4:19	4:26	4:33	4:40	4:44	4:52	4:58	5:03	5:10
4:40	4:48	4:52	4:59	5:06	5:13	5:20	5:24	5:32	5:38	5:43	5:50
5:20	5:28	5:32	5:39	5:46	5:53	6:00	6:04	6:12	6:18	6:23	6:30
6:00	6:08	6:12	6:19	6:26	6:33	6:40	6:44	6:52	6:58	7:03	7:10
6:40	6:48	6:52	6:59	7:06	7:13	7:20	7:24	7:32	7:38	7:43	7:50
7:20	7:28	7:32	7:39	7:46	7:53	-	-	-	-	-	-

(301) 324-BUSS (2877) www.princegeorgescountymd.gov

Service to:
 Clinton Fringe Lot
 Clinton
 Gwynn Park
 Brandywine Crossing
 Pinefield Shopping Center

(301) 324-BUSS (2877)
 TDD: 1 (800) 735-2258
www.princegeorgescountymd.gov
 Robert L. Baker III
 County Executive



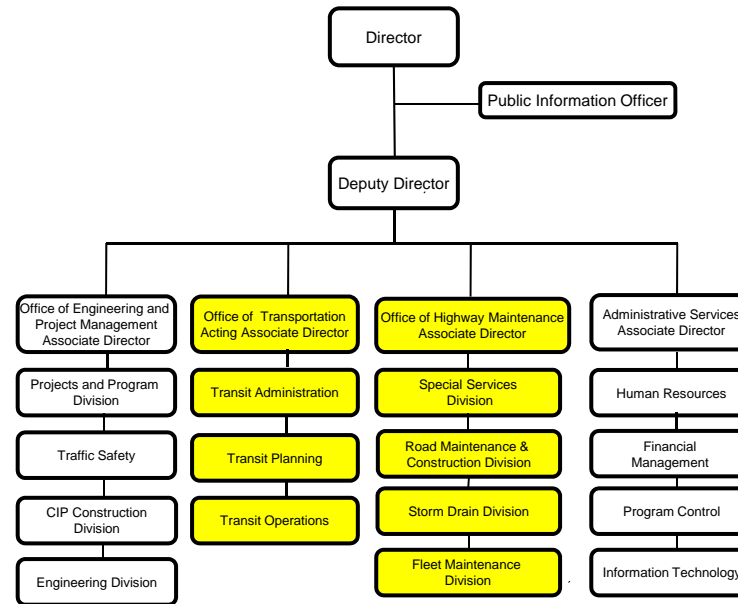
Fares
 Adults: \$1.25
 Seniors (50+) & Disabled: FREE*
 First child under 5: FREE

*Proper ID required (i.e., driver's license, State issued ID card, MetroAccess card, Metro senior or persons with disabilities card, Medicare card, etc.)

Other passes are available. Electronic transfers are available with paid fares only. Please have exact fare ready when you board. Drivers do not carry change.



DEPARTMENT OF PUBLIC WORKS & TRANSPORTATION Organization Chart



TheBus

➤ Service Characteristics

- Total of 28 routes serve the County;
- Operates Monday-Friday:
 - 6:00am – 7:00pm;
- **TheBus** service to to 15 Metrorail Stations in the County;
- 3,728 County Bus Stops;
- FY14 Ridership – 3.8 million;
- \$26.1 million FY15 budget (projected);
- Fleet – Mostly Low-Floor Gillig Phantoms;
- Fare structure:
 - Adults: \$1.25
 - Seniors (60+) & Disabled: Free
 - First child under 5: Free



TheBus

➤ Bus Stop/Shelter Program

- 10-Year Contract with Signal Outdoor, Inc.
 - 60 Bus Benches installed throughout the County annually – **2014 Beginning Installation!**
 - 43 Shelters installed throughout the County annually



➤ Bicycle Rack Installation

- Beginning installation in Fall 2015
 - Currently evaluating vendors
 - Installing 3-bike racks



Image via <http://ridemcts.com>



Paratransit Operations & Call-A-Cab Program

➤ Paratransit – Senior Transportation Services (STS)

- Provides regularly scheduled curb-to-curb transportation throughout Prince George's County to senior and disabled County residents.
 - Nutrition Program
 - Medical Program
 - General Transportation
- Department of
Family Services

➤ Paratransit - Call-A-Bus Service

- Demand Response curb-to-curb service available to all residents of Prince George's County who are not served by or cannot use existing fixed route services. Priority given to senior and disabled persons.
- Reservation based service – 14 day advance notice
- Fare: \$1.00, Senior Citizens and Disabled Citizens ride free



Call-A-Bus



➤ Service Characteristics

- Demand Response ADA/Paratransit
- Operates Monday-Friday:
 - 6:30am-3:30pm
 - Trips can be requested up to 14 days in advance.
- Fleet of 52 vehicles;
- FY14 Ridership – 26,280 passengers
- **Call-A-Bus** service throughout the County to seniors, disabled and low-income persons;
- Fare structure:
 - Adults: \$1.00
 - Seniors (60+) & Disabled: Free
 - First child under 5: Free



Call-A-Cab

Transportation service that provides mobility within Prince George's County at a reduced cost for senior (age 60 & over) and/or disabled County residents;

➤ Service Characteristics

- Operates Monday-Friday.
- Coupon based program featuring participating taxi cab companies.
- Up to fourteen (14) \$20.00 coupon books can be purchased in a six-month period for \$10.00 per book.
- Coupons can be applied to cost of cab trip.



“Raising the Profile of Transit”

Current Initiatives

- **2013 - Recalibration** – Recent assessment of overall trip time performance revealed that several routes required schedule revisions. Several route schedules underwent schedule modifications designed to improve on time performance. This effort is ongoing.
- **2014 - Bus Stop Improvement Program** – \$2.3 million state grant which will facilitate passenger, pedestrian and ADA accessibility improvements to over 500 bus stops.
- **2014 - Identifying Opportunities for Exposure & Growth** – Recent extension of service into Charles County along emerging business/retail corridor. Partnering talent in house to forward exciting customer/passenger centric projects.



“Raising the Profile of Transit”

Current Initiatives

➤ 2014- Identifying Opportunities for Exposure & Growth

- **Google Transit** – Compiling GTFS files to launch **TheBus** transit service in Google Transit;
- **Bus Shelter/Bench Program** – Installation of new bus shelters and benches; maintenance of current amenities;
- **Bus Stop Improvement Program** – Increase the number of accessible stops and ensure ADA compliance;
- **RPIDS** (Real Time Passenger Information Display) – Enhanced traveler information system can be positioned at a transit hub or remotely; and
- **Installation of bike racks** onto **TheBus** vehicles – Creates multi-modal transit opportunity for cyclists, thereby increasing access to destinations. options



Service Challenges

- Obtaining resources to operate higher frequencies in dense transit dependent areas;
- 'Coverage' routes versus 'High Ridership' routes
 - Balancing routes that facilitates coverage and routes that facilitate frequent service
- Pockets of fixed route demand in fringe areas;
- Obtaining dedicated funding for operations



TRAFFIC RESPONSE AND INFORMATION PARTNERSHIP CENTER TRIP CENTER



TRAFFIC MANAGEMENT CENTER



1. LOCAL TRAVELER INFORMATION

2. LOCAL TRANSIT

3. INCIDENT MANAGEMENT

4. SPECIAL EVENT INFORMATION

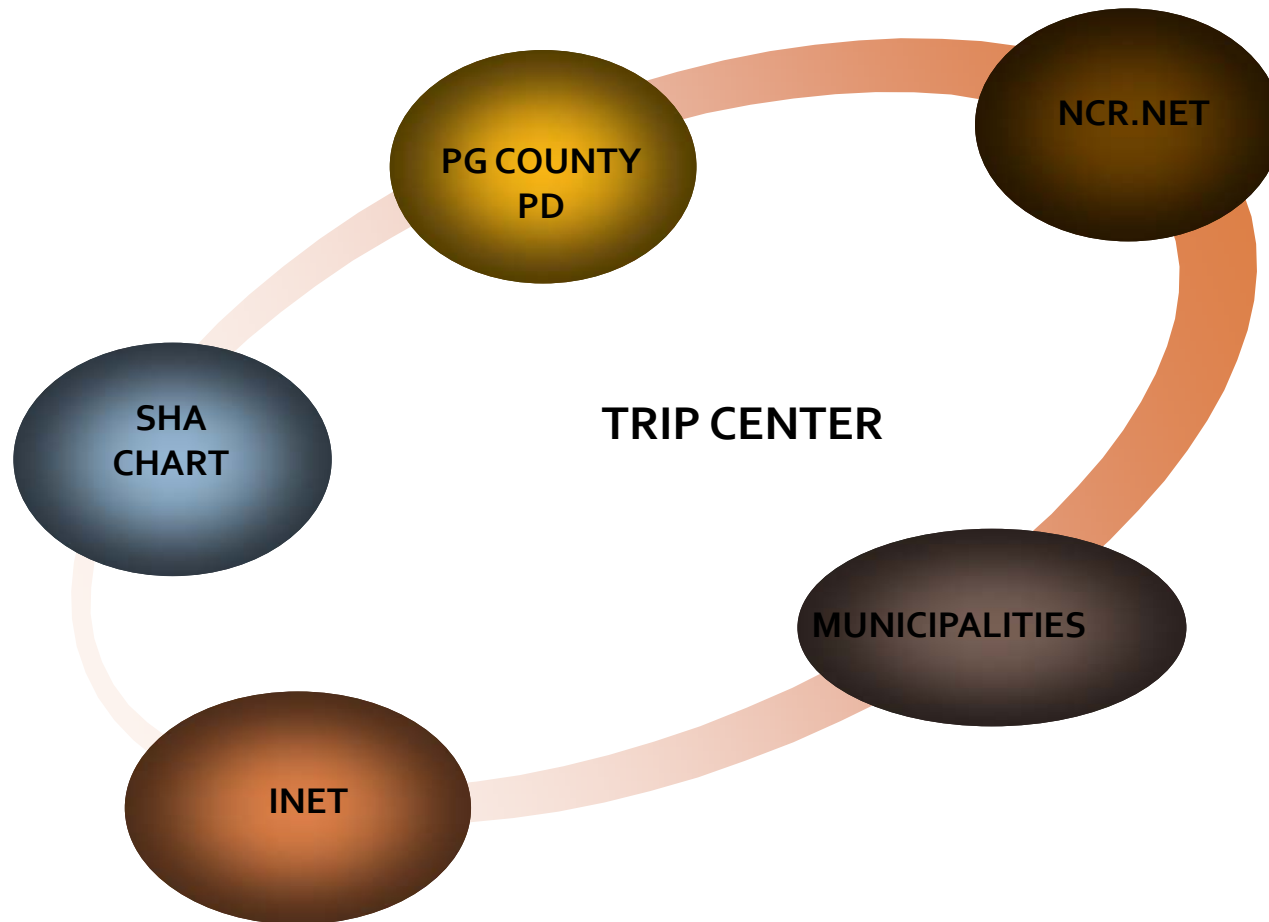
5. ONLINE SERVICES

Our mission is to provide efficient, well-maintained and environmentally friendly transportation infrastructure systems for all users.



DATA SHARING

Traffic data & video sharing with authorized users



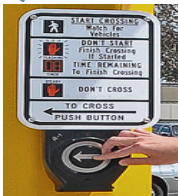
ITS PROGRAMS

Prince Georges
County DPW&T
TRAFFIC OPS

**SPEED
AWARENESS**



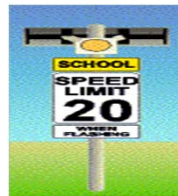
APS



**VARIABLE
MESSAGE SIGNS**



**SCHOOL FLASHER
PROGRAM**



**LED
TRAFFIC SIGNALS**



**LED
STREET LIGHTS**



**ONLINE
SERVICES**



**VEHICLE
DETECTION CAMERA**

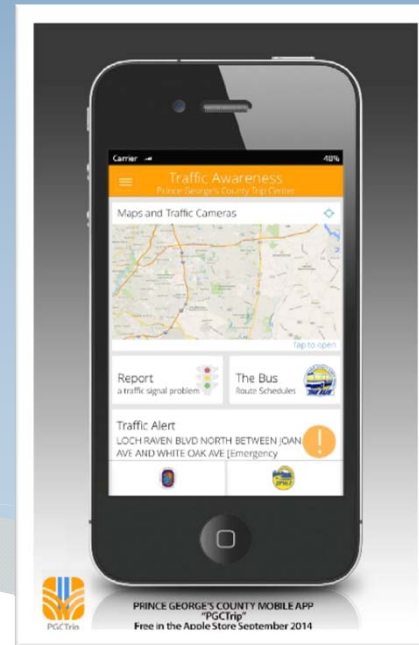
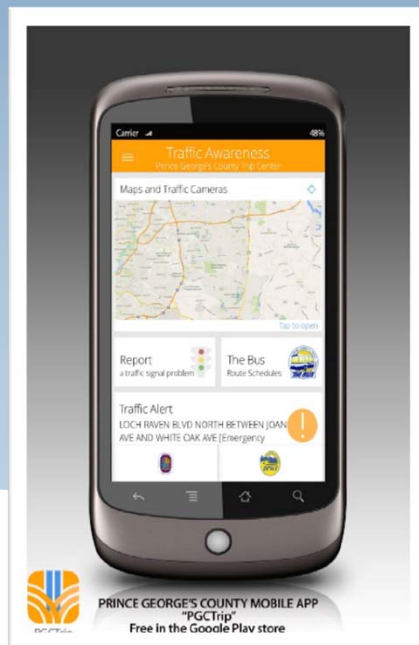


**TRAFFIC
CAMERA**



Prince George's County PGCTrip Mobile App

The Prince George's County Department of Public Works and Transportation created a FREE Commuter App that allows the traveling public to have access to Transit route schedules and arrival times, Traffic Cameras, Traffic Incidents, Road Conditions, Pavement sensor information and more....

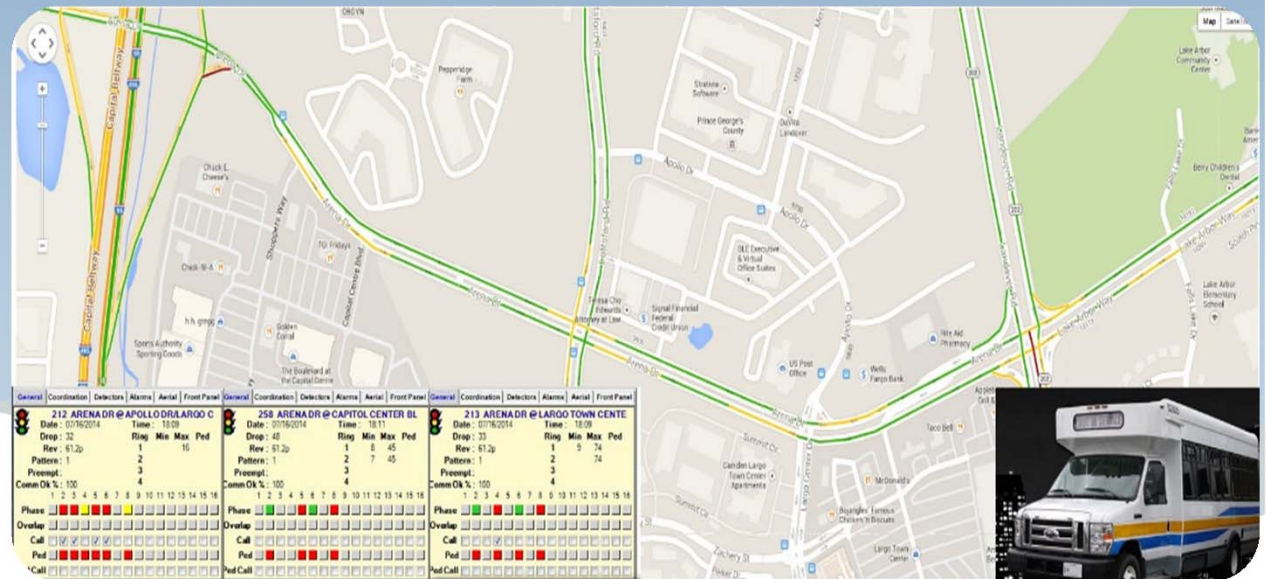


PRINCE GEORGE'S COUNTY TRANSIT PRIORITY PILOT

The County plans to implement an Active GPS based TSP approach by adjusting the signal timing along system corridors dynamically to improve service for the transit vehicle.

In preparation for Transit Priority, the County will evaluation 19 of its traffic signal systems along transit routes. Consideration will given to:

- Traffic Volumes
- Level of Service
- Cycle length
- Pedestrian movement
- Bike lanes
- Communications
- Type of Detection



Prince George's County TRANSIT PRIORITY PILOT

- Detailed report with recommendations for optimization and improved coordination
- Conception of operation for TSP
- Pilot Implementation plan
- Testing
- Re-evaluate the systems and determine if LOS is acceptable after TSP
- Make changes based on recommendations



THANK YOU

QUESTIONS?

