

# PRINCE GEORGE'S COUNTY

---

MWCOG – TLC Peer Exchange  
January 13, 2020

# Eastover/Forest Heights Trail Improvement Plan – Project Highlights, Lessons Learned and Next Steps

Bryan Barnett-Woods and Fred Shaffer; M-NCPPC



## EASTOVER FOREST HEIGHTS trail improvements PLAN

MAY 2019



Prepared by:



# This TLC project was intended to move master plan proposals towards implementation and engage agency and citizen stakeholders



# A myriad of facility gaps and needs were identified in the area:



## Gaps included:

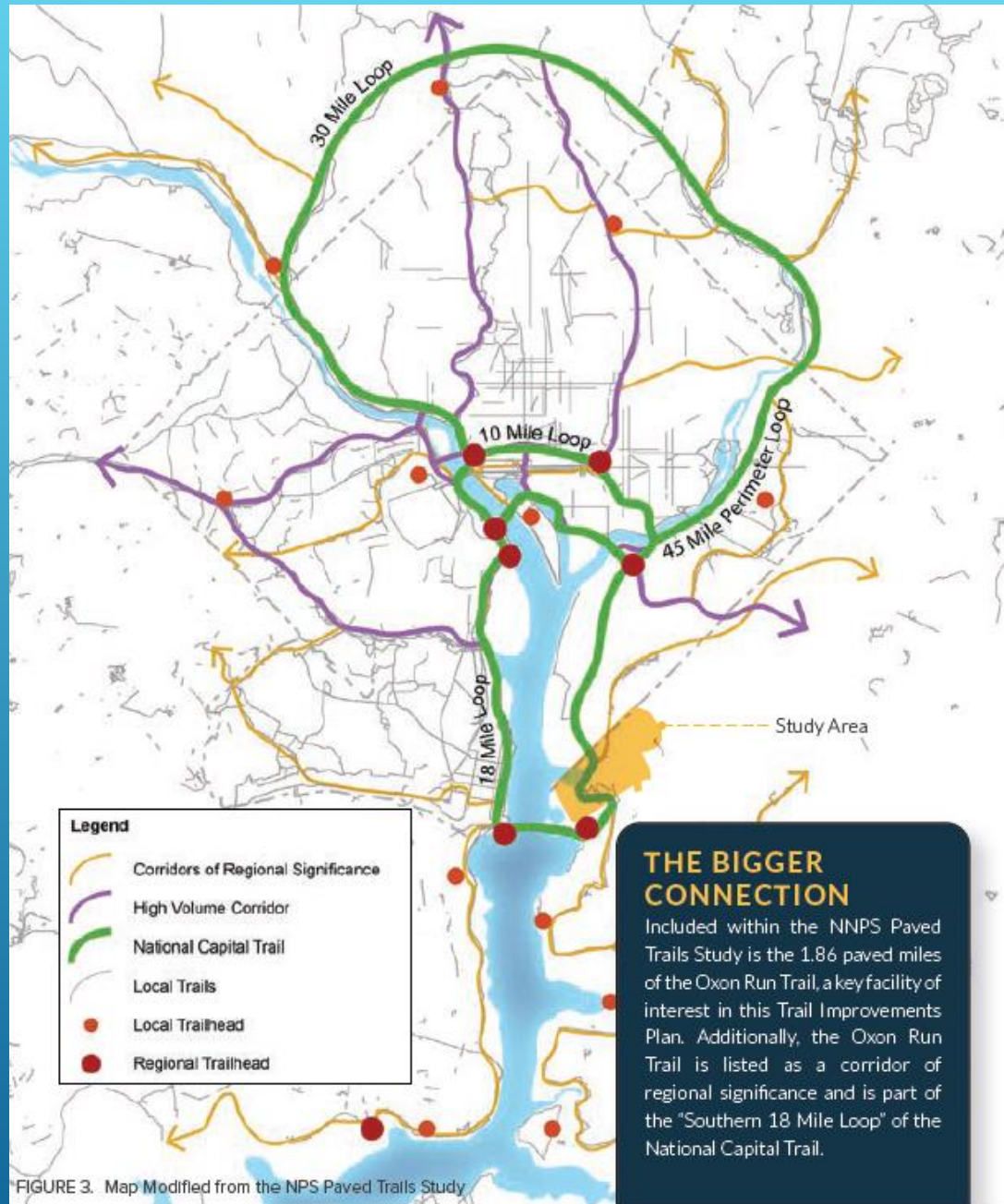
- Trail bridges
- Incomplete sidewalks
- On-road bike facilities
- Key trail connections
- Pedestrian crossings

Many stakeholders were engaged:

- M-NCPPC
- National Park Service
- DPW&T
- SHA
- Town of Forest Heights
- Business Improvement District
- Capital Trails Coalition
- Area residents and bicycle groups



Projects within the study area are important locally and regionally. The planned trail network will not only improve pedestrian safety and local connectivity, but also complete gaps in the regional network.



# Purple Line Parking Study – Context

- New transit line – 2022
- New Zoning – 2020
- Influence:
  - Mode share
  - Development pattern
  - Placemaking



# Purple Line Parking Study – Context

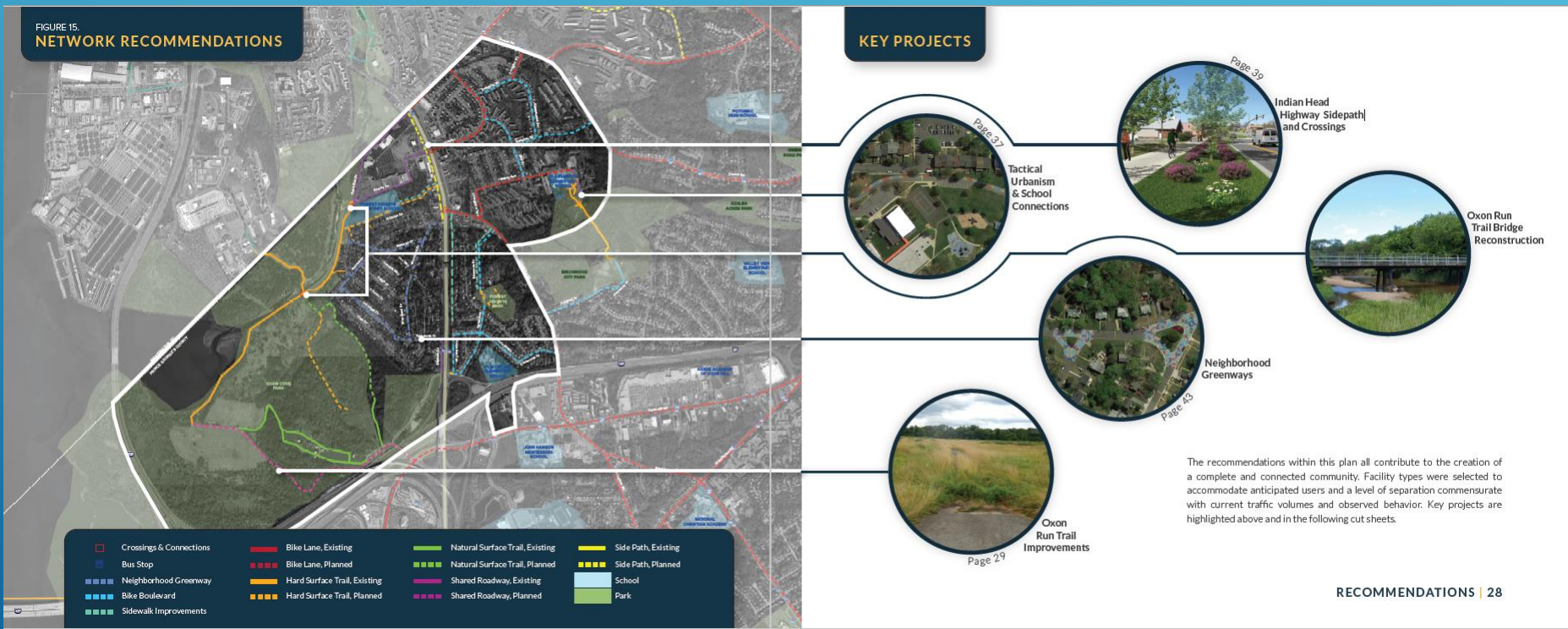
- Limited data
- Existing policies
- Perceptions vs realities
- Emotional



Image from Flickr User Alexg2887



# Key projects were prioritized and the appropriate implementing agencies were identified.



Renderings helped the community envision how their area can be transformed.



### **Academic Exploration**

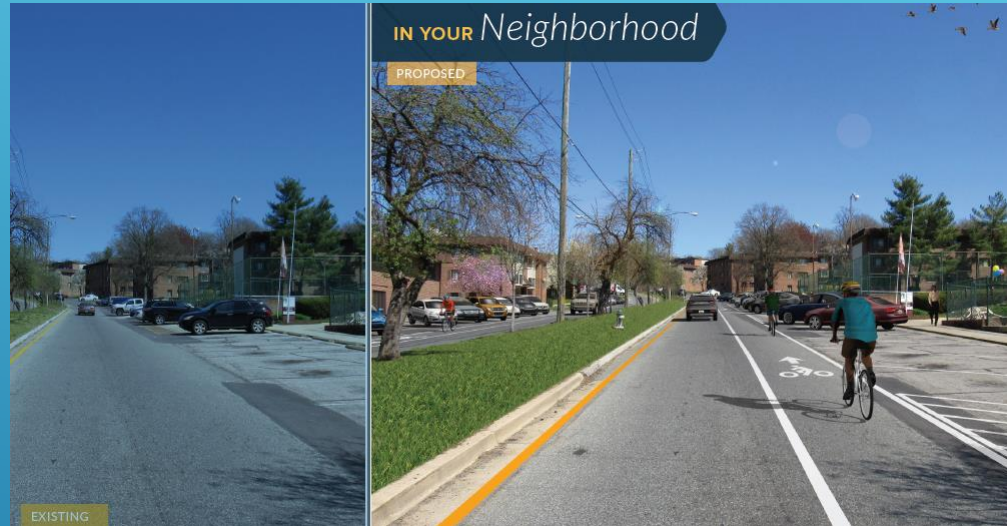
In 2009, students in Dr. David Myers' Landscape Architecture Studio at the University of Maryland examined the areas of Eastover and Forest Heights and recommended trail improvements and connections that would better serve the community. Students recommended a range of facilities and elements to enhance the existing system, including trails, greenways, new bridges and piers, plazas, trailheads, and programmed parks. These ideas enhanced creative thinking during recommendation development.

# Major recommendations included:

- Trail bridges along Oxon Run
- Trail maintenance and amenities
- Bicycle and pedestrian improvements along MD 210
- Local trail connections to parks and schools
- On-road bicycle facilities included bike lanes, cycle tracks and wayfinding signage



WAYFINDING, DIRECTIONAL SIGNAGE, KIOSKS, AND INTERPRETIVE SIGNS



EXISTING

PROPOSED

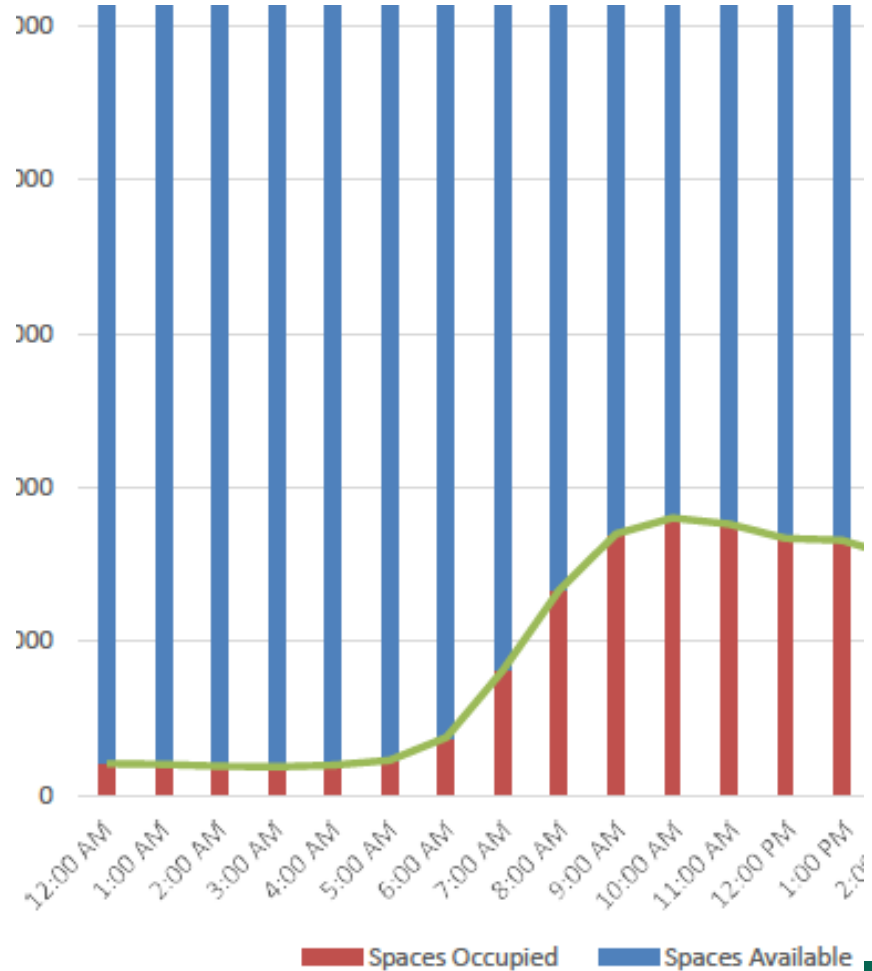
IN YOUR Neighborhood



PUBLIC ART AND SCULPTURE

# Purple Line Parking Study – Outcomes & Recommendations

- Less usage than expected
- Policies don't encourage parking management

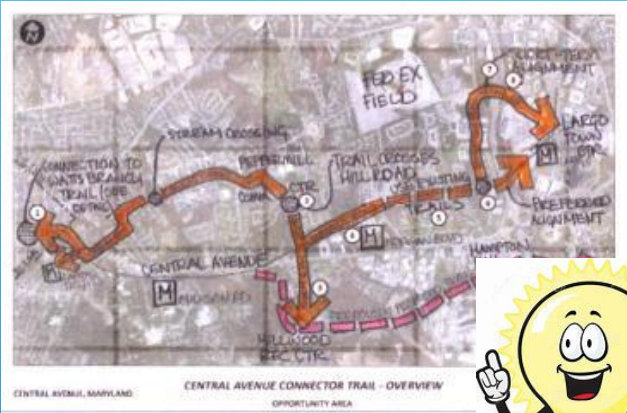


# Purple Line Parking Study – Outcomes & Recommendations

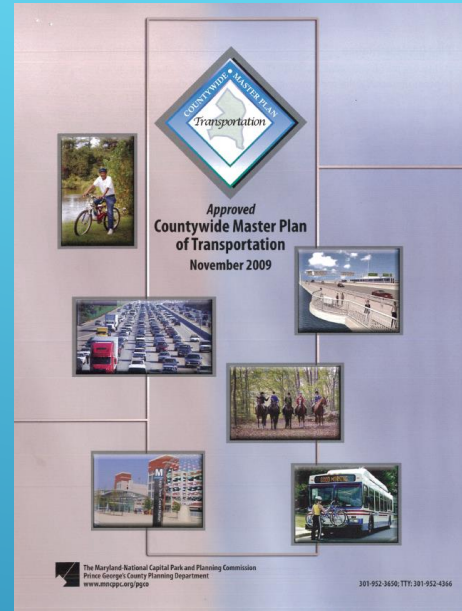


- Residential Parking Permit Program
  - Organized neighborhoods
  - Pro-active vs reactive

# Moving trails from an idea to a "line on a map" to implementation



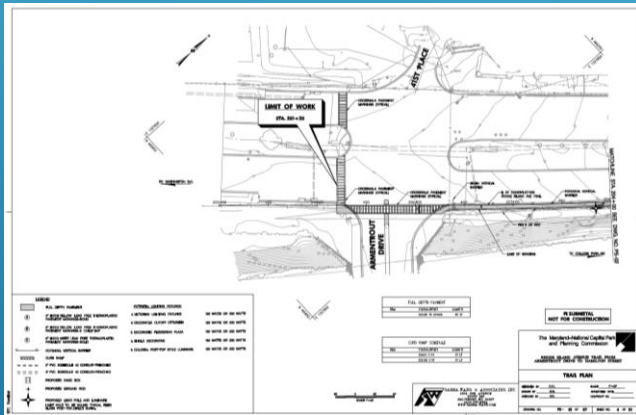
1. First you need an idea.



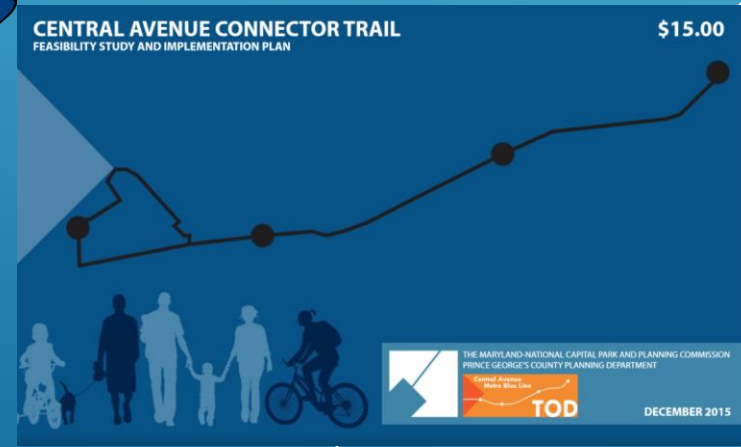
2. Then you need to incorporate the trail into an approved plan



4. 30% design plans should then be completed for the approved alignment.



5. Once the 30% design plans are complete, you are eligible for funding for final design and construction!



3. Next you need to study the feasibility/alignment in more depth and develop an implementation plan.

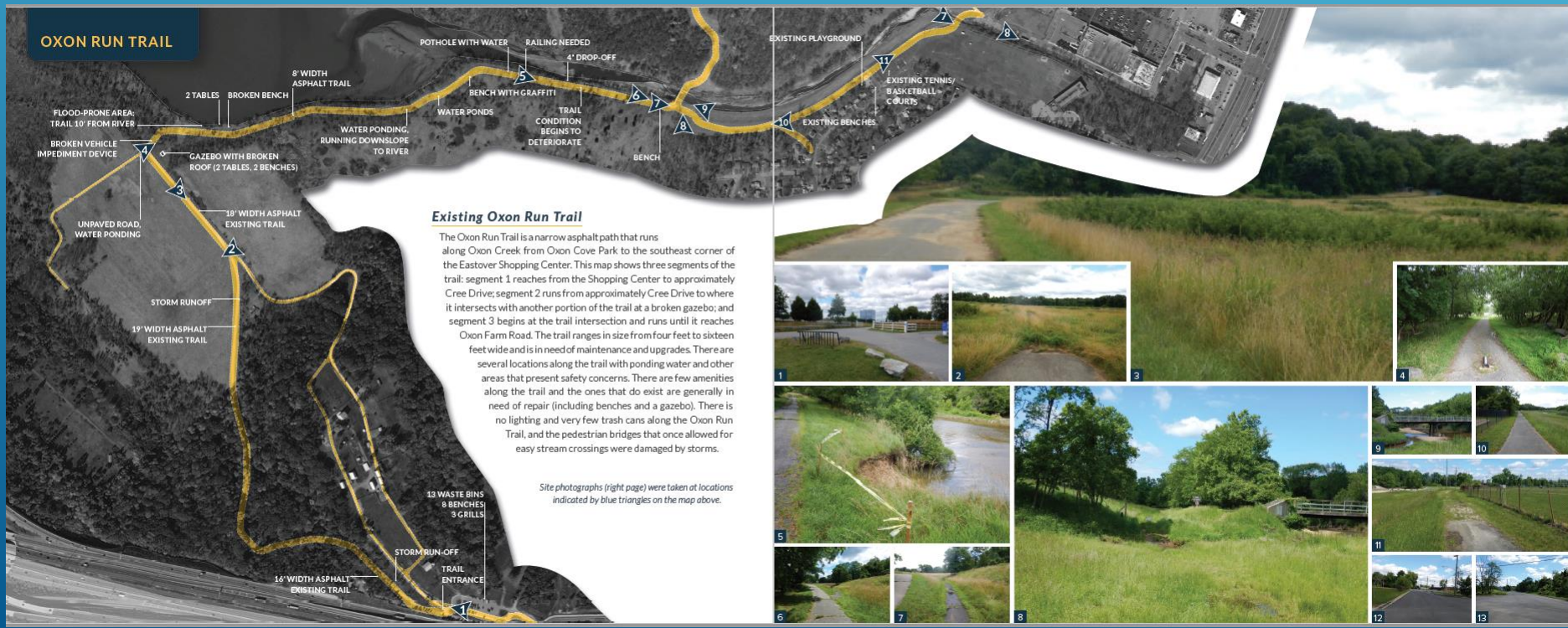
# Purple Line Parking Study – Lessons Learned

- Strategize project scope
  - Data collection / Policy guidance
- Stakeholder groups
  - Shape data efforts
  - Shape policy/practices



# Next steps:

- Engage stakeholders to refine the priorities and identify next steps.
- Submit grant applications for 30% designs for key projects (possible future TLC applications for design)
- Incorporate other projects into agency work programs
- Many improvements focused on Oxon Run Trail





# Purple Line Parking Study – Next Steps

- Takoma-Langley  
Redevelopment Study
  - TOD opportunities
  - Business development
  - Expanded parking  
analysis
- Future Master Plans



# Questions?