

# Visualize 2045 Update Plan Outline and Document Development

Stacy Cook, TPB Transportation Planner  
Transportation Planning Board

January 19, 2022

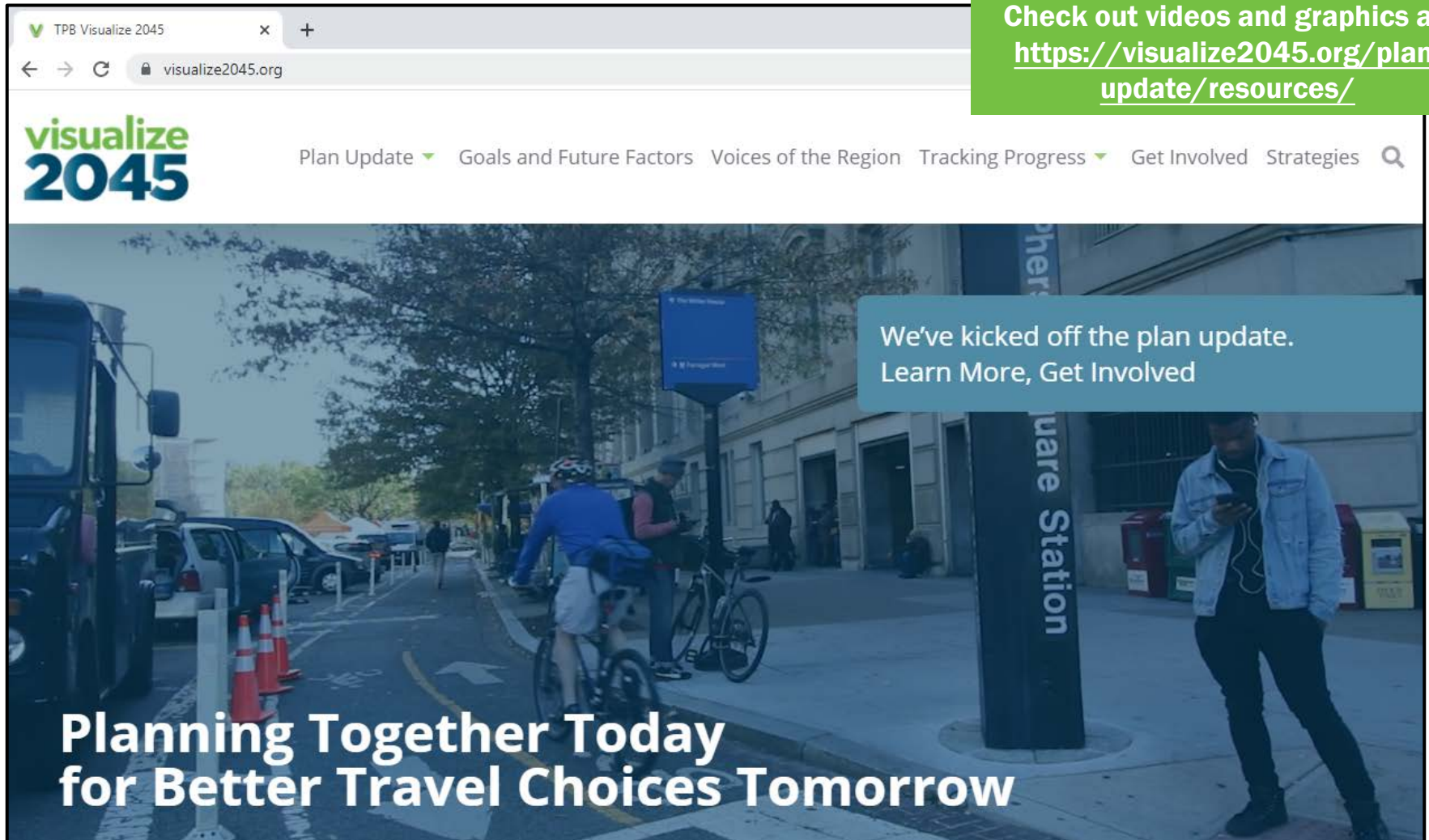
Agenda Item #10



**visualize**  
**2045** A long-range  
transportation plan  
for the National  
Capital Region

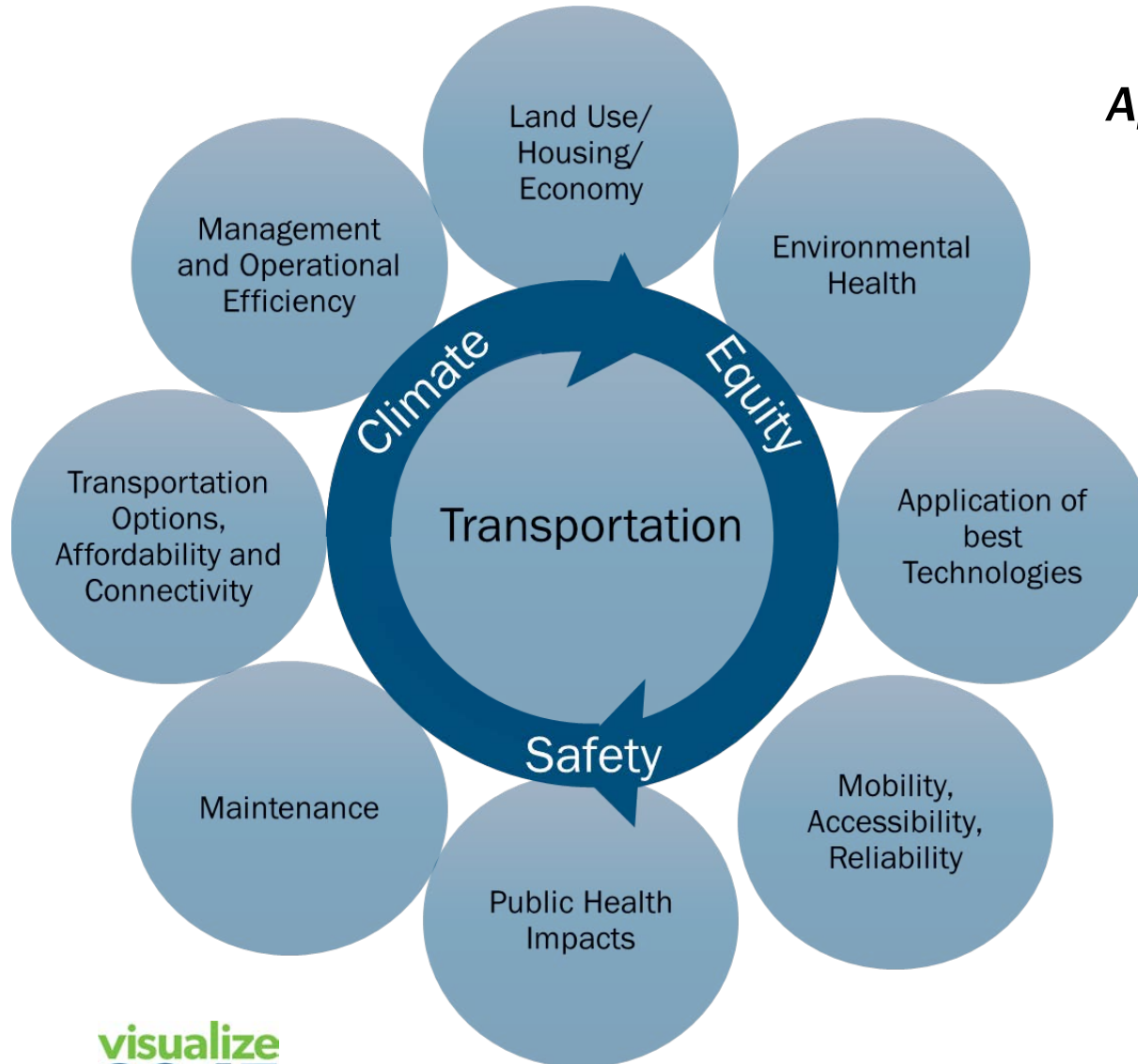
Flickr/Belvoir Hossein

# Updated Visualize 2045 Website



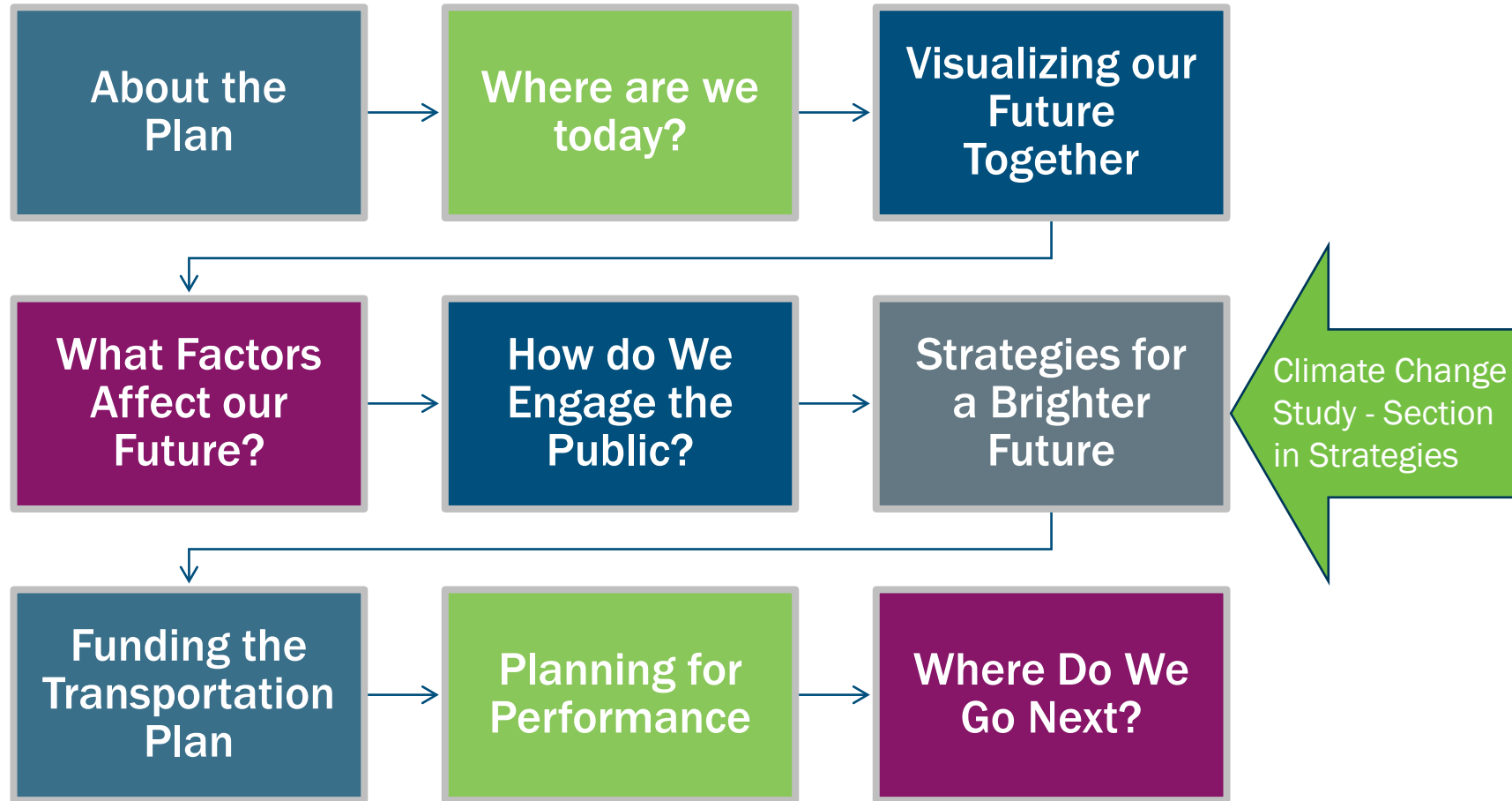
Check out videos and graphics at:  
<https://visualize2045.org/plan-update/resources/>

# Plan Emphases: Safety, Equity, Climate



***Applying an equity lens and an integrated planning approach as we work toward shared regional goals, with a renewed emphasis on safety and climate resilience.***

# Plan Organization



# Highlights of What's New

Applies an 'equity lens' to plan content.

Process:  
More information on the planning process:  
How does regional planning work?

Public Engagement:  
Integrates Voices of the Region findings

Planning:

- transportation modes
- future /federal planning factors
- section on climate change and CCMS of 2021

Projects:  
Integrates project sponsor responses to regional policy questions.

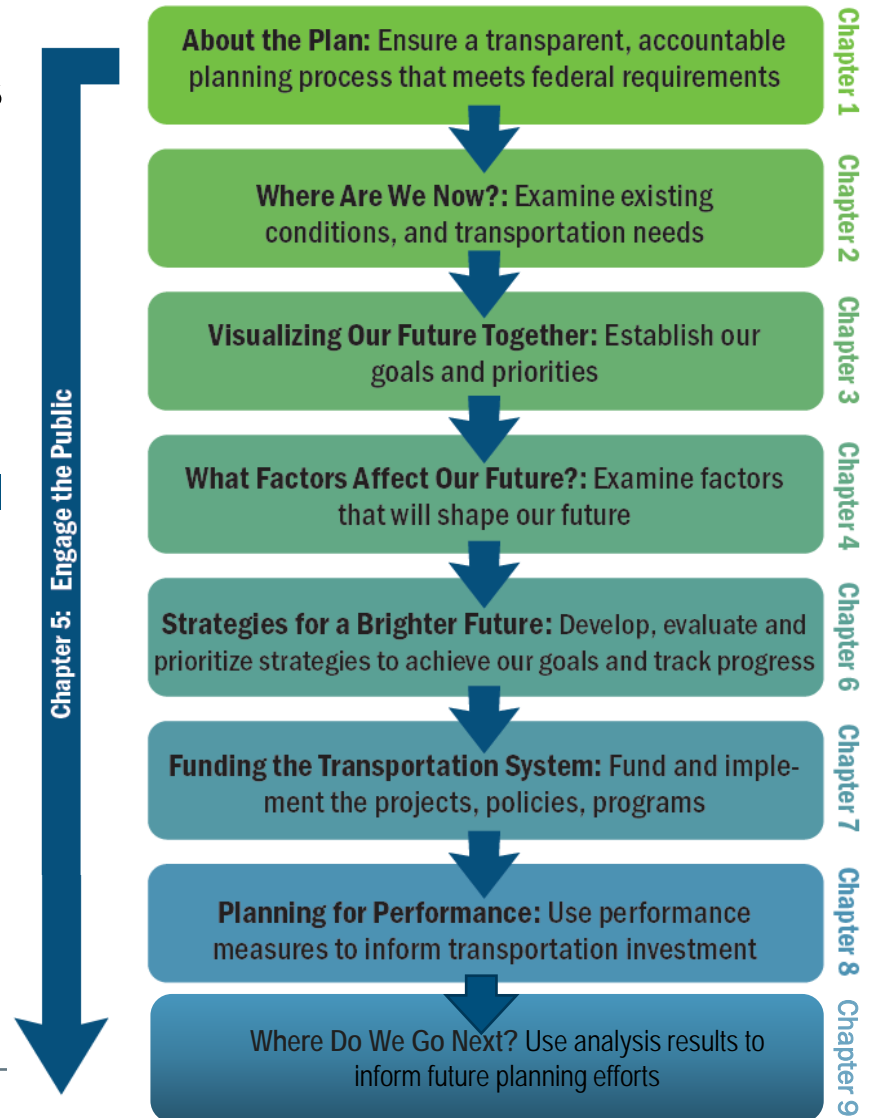
Federal Compliance:  
Progress discussions for the PBPP and the new TPB performance measures.

*And the plan maintains a continued focus on demonstrating federal compliance*

# Chapter 1: About the Plan

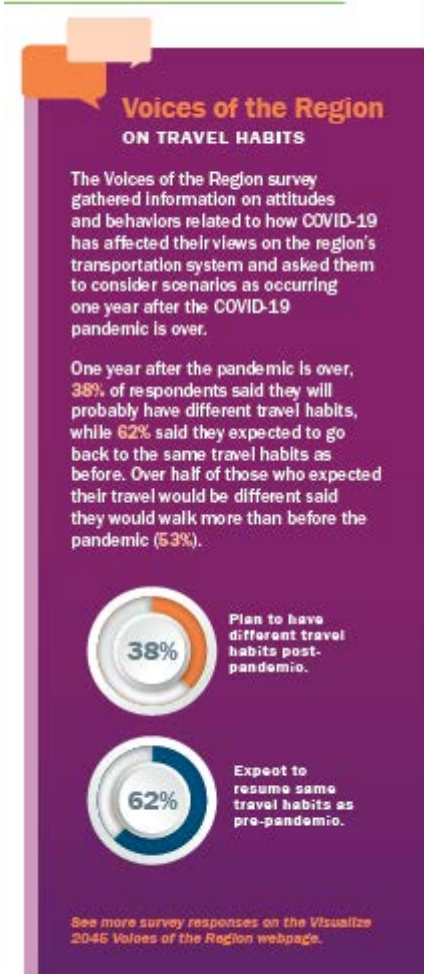
- About the TPB and planning process
- Purpose of the plan
- **How you can use this plan**
- **Planning process and roles** (including board and public)
- Plan development
- **How local projects fit into the plan**
- **Where to learn more about regional planning**
- Federal Requirements

*How TPB goals are implemented - within and beyond the constrained element (aka: air quality analysis project list)*



# Chapter 2: Where Are We today?

- Provides regional context in which TPB and its members conduct planning for the region's transportation system
- Types of information:
  - Acknowledging COVID-19, equity, and climate change
  - Data
    - **Regional Travel Survey (RTS) findings**
    - **Demographics**
    - Existing and projected population and employment
    - **Cultural, social, and environmental data**
      - *Electric Vehicle Planning*
      - *EJ/Pollution proximity discussion /map*
      - *Importance of land cover*
  - **Input from Voices of the Region public outreach**



# Chapter 3: Visualizing Our Future Together

## TPB policy framework: regional vision/goals

- Highlights recent TPB equity, climate and safety resolutions
- Climate Goals
- Voices of the Region findings and quotes
- **Challenges discussion**
- How TPB goals align with the federal transportation National Goals
- Quotes from Board Members on TPB priorities

## THINK REGIONALLY, ACT LOCALLY

The region comes together through the TPB to establish shared regional policy goals. Local jurisdictions and agencies take action and make progress on local and regional goals by funding and implementing projects, programs and policies that move our region forward.



# Chapter 4: What Factors Affect our Future?

- A new chapter that highlights emerging and significant planning factors to consider when planning\* include:
  - Equity
  - Climate change and the environment
  - Safety
  - Emerging technologies
  - Public health
  - Land use, population, and the economy
  - Funding
- **Voices of the Region public input**

\* Chapter 6 covers additional planning topics

**TRANSPORTATION FACTORS THAT SHAPE OUR FUTURE**

**visualize 2045**  
A Metrolink transportation plan for the National Capital Region

By 2045, metropolitan Washington's transportation system is expected to handle 21 million daily trips. To ensure each one is safe, efficient, and accessible, our regional transportation plan not only addresses ongoing challenges like congestion and crowding but looks boldly to the future.

**EQUITY**  
We need a transportation system that works for all people, regardless of income, race, age, gender, or ability.

**ECONOMY**  
Our roads, transit systems, and trail networks connect our communities, support the movement of goods, and lead to a stronger regional economy.

**TRAFFIC SAFETY**  
Everyone should be able to get around safely. Whether on foot or bike, in a car, or on a bus, we're working together to reduce fatalities and injuries so every trip is a safe one.

**FUNDING**  
Most transportation funding goes to the upkeep of existing infrastructure. We're promoting strategies to keep pace with demand, enhance the system, and make the most of every dollar.

**CLIMATE CHANGE AND THE ENVIRONMENT**  
To protect our climate and ecosystems, transportation solutions need to reduce emissions and environmental impacts. We need to ensure transportation options are resilient and reliable as extreme weather increases.

**PUBLIC HEALTH**  
Clean air, traffic safety, and healthy neighborhoods are directly linked to transportation planning. Making it easier to walk, bike, and take transit reduces emissions and helps communities thrive, even when faced with crises such as the COVID-19 pandemic.

**LAND USE**  
As our population grows, we're promoting strategies that bring together jobs, a range of housing options, services, and recreational opportunities in walkable environments served by transit and freight.

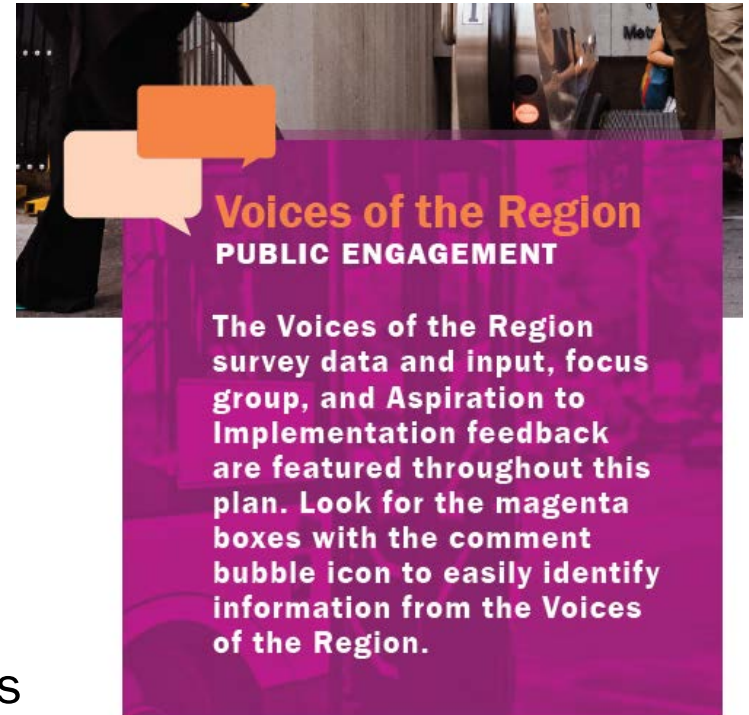
**EMERGING TECHNOLOGIES**  
Advancements in transportation technology can improve efficiency, safety, and integration, and reduce greenhouse gases. However, the role of connected and automated vehicles remains uncertain. We need to anticipate and adapt to beneficial innovations.

National Capital Region Transportation Planning Board  
Plan Together. Prosper Together.  
Get involved with the Transportation Planning Board.

visualize2045.org  
Think regionally, act locally.

# Chapter 5: How Do We Engage the Public?

- This chapter provides information on:
  - Why the TPB engages the public
  - Federal requirements
  - **How the TPB engages the public:**
    - E.g., Voices of the Region: Survey Focus Groups and Aspiration to Implementation, comment periods – look for a **Story Map** on this soon!
- There will be an appendix that documents how the plan process has followed the TPB's public participation process. The TPB has published separate reports for the Voices of the Region Survey, Focus Groups, and Aspiration to Implementation event.



# Chapter 6: Strategies for a Brighter Future



6

CHAPTER

Strategies for  
a Brighter  
Future

## WHAT IS A STRATEGY?

A strategy is a way  
to achieve a goal.

Designed to communicate all planning areas and priority strategies in  
3 main sections:

1. Aspirational Initiatives
2. Transportation Options
3. Strategies to Address the Future Factors and **Federal Planning Factors** – includes a full climate change section

# Chapter 6: Strategies for a Brighter Future

## Transportation Options:

- TDM
- Bike/Ped/Micromobility
- Transit (new) including Intercity bus
- Driving and Riding (new)
- Airport Systems

## Future Factors/Federal Planning Factors

- Equity and Inclusion
- Coordinated Human Transportation Services Plan
- **Climate Change Mitigation and Resiliency**
- Environmental Consultation and Mitigation
- Safety
- Land-Use (including affordability and HCT/EEA planning)
- Freight
- Funding
- **Public Health**
- Management and Operations
- Emerging Technology/**CAV**
- Emergency Preparedness and Transportation Security
- Travel and Tourism

**Equity considerations and planning discussed in each section**

# Chapter 6: Strategies for a Brighter Future

- Voices of the Region public input
- ‘Visualize the Future’ sections enhanced to track progress and provide examples from the regional policy documentation submitted by sponsoring agencies
- ‘Policy Context’ call-outs

## The Policy Context

**Impact of the Aspirational Initiatives**

Expanding BRT and transitways throughout the region with improved bicycle and pedestrian connections would provide more people access to High-Capacity Transit and additional connectivity to destinations throughout the region, including making existing and future intercity bus stations more accessible for all. Expanding Metrorail core capacity would provide logistical ease and comfort for those traveling by Metrorail to and from the region’s numerous destinations served by Metrorail, including intercity bus stations.

**Planning Factors**

- Enhance travel and tourism.
- Increase the accessibility and mobility of people and for freight.
- Enhance the integration and connectivity of the transportation system, across and between modes, for people and freight.

**draft**

**RTPP Goals**

- Promote a strong regional economy, including a healthy regional core and dynamic Activity Centers.
- Support inter-regional and international travel and commerce.

# Chapter 7: Funding the Transportation Plan

- Regional funding
- Background on project development and funding categories
- Financial plan summary
- Constrained element (project list) summary
  - Aspirational Initiatives implemented through the constrained element
  - Summary (providing a count) of the project sponsor responses to federal/regional policy questions



## Goal 2: Promote a Strong Regional Economy, Including a Healthy Regional Core and Dynamic Activity Centers

The region's economy is supported largely by the economic activity that occurs in major housing and job centers, known as Activity Centers. Strengthening these areas, including the regional core, and connecting them with good transportation options bolsters the economy. It allows us

to grow and use land more wisely, and creates numerous opportunities to move people and goods more efficiently and with a lower carbon footprint. Respondents for each of the projects were asked about the project area and overlap with Activity Centers and Equity Emphasis Areas (EEAs), which areas with significant concentrations of low-income, minority populations or both.



Table 7.2: Goal 2 - Project Sponsor Responses



*Note: the performance analysis has moved to Chapter 8, Planning for Performance*

# Chapter 8: Planning for Performance

- Performance Overview
  - Performance-Based Planning and Programming: **data trends and progress**
  - Congestion Management Process
  - Air Quality Conformity Analysis results
  - GHG and land use measures
  - Systems Performance Analysis of the constrained element of the LRTP
    - **New systems performance measures**

Table 8.5: Regional Transit Asset Management Targets for Revenue Vehicles, 2020 (Source: Transportation Planning Board)

Percentage of Revenue Vehicles that Have Met or Exceeded Useful Life Benchmark	Regional Assets Total	Regional Target
Articulated Bus	91	4.8%
Auto	34	0.0%
Over-the-Road Bus	169	23.4%
Bus	2709	5.0%
Cutaway Bus	84	6.8%
Heavy Rail Passenger Car	1200	0.0%
Light Rail Vehicle	6	0.0%
Commuter Rail Locomotive	20	0.0%
Commuter Rail Passenger Coach	100	0.0%
Van	844	10.6%
<b>Revenue Vehicle Totals</b>	<b>5257</b>	

draft

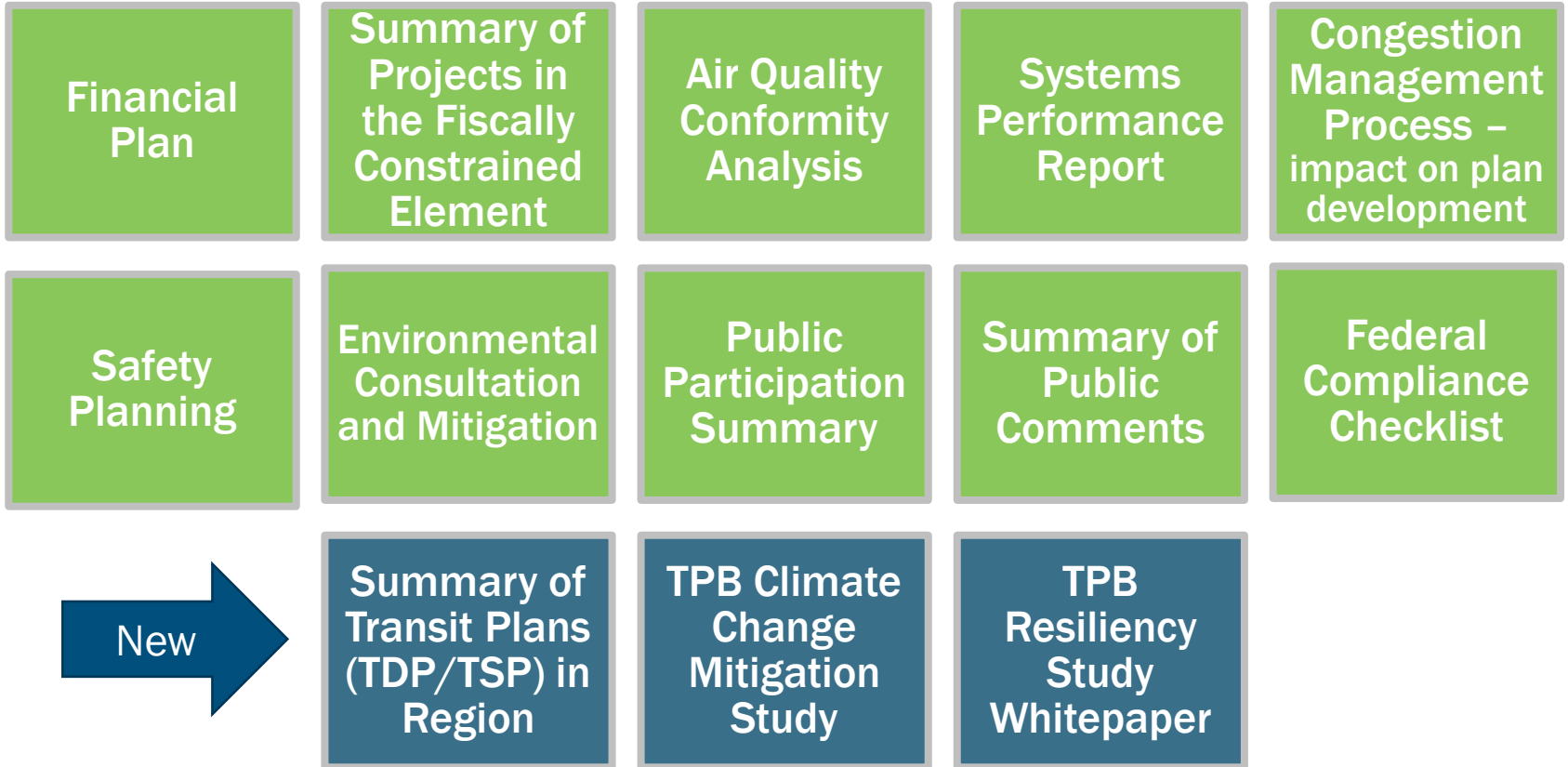
# Chapter 9: Where Do We Go Next?

- This chapter will:
  1. wrap up the plan
  2. discuss findings from the climate change study
  3. discuss findings from the air quality and system performance analyses
  4. discuss planning and strategies towards 2045





# Plan Appendices and Reports



# Next Steps

- January - March 2022:
  - Finalize air quality conformity and system performance analyses – document in chapter 8
- Now - March 2022:
  - Develop Climate Change Section, document any formal response by Board to Climate Change Mitigation Study of 2021 findings
- Now - March 2022:
  - Draft “Where Do We Go Next,” Chapter 9
- April 1, 2022:
  - Begin Public Comment Period on the Air Quality Conformity Analysis and the plan
- May 2022 TPB meeting:
  - Staff present public comment summary
- June 2022 TPB meeting:
  - Staff recommendation for approval of the update to Visualize 2045

## Stacy Cook

TPB Transportation Planner  
scook@mwkog.org

**[mwkog.org/TPB](http://mwkog.org/TPB)**

Metropolitan Washington  
Council of Governments

777 North Capitol Street NE,  
Suite 300

Washington, DC 20002