



NEVI PROGRAM AND LOCAL GOVERNMENT INVOLVEMENT

AGENDA

- I. Welcome / Agenda
- II. NEVI Background
- III. Involving Local Partners in NEVI

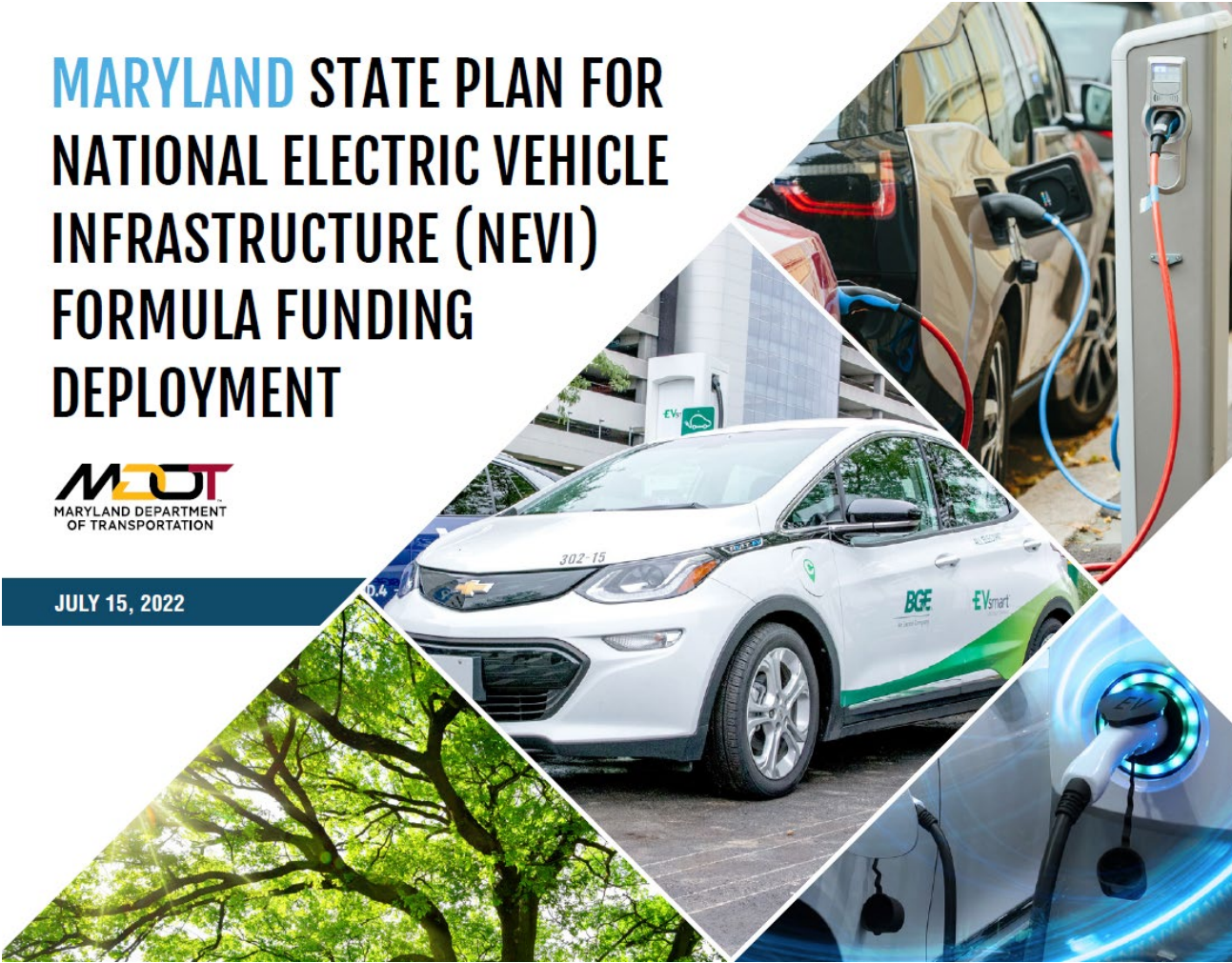
NEVI Background

NEVI Overview

MARYLAND STATE PLAN FOR NATIONAL ELECTRIC VEHICLE INFRASTRUCTURE (NEVI) FORMULA FUNDING DEPLOYMENT

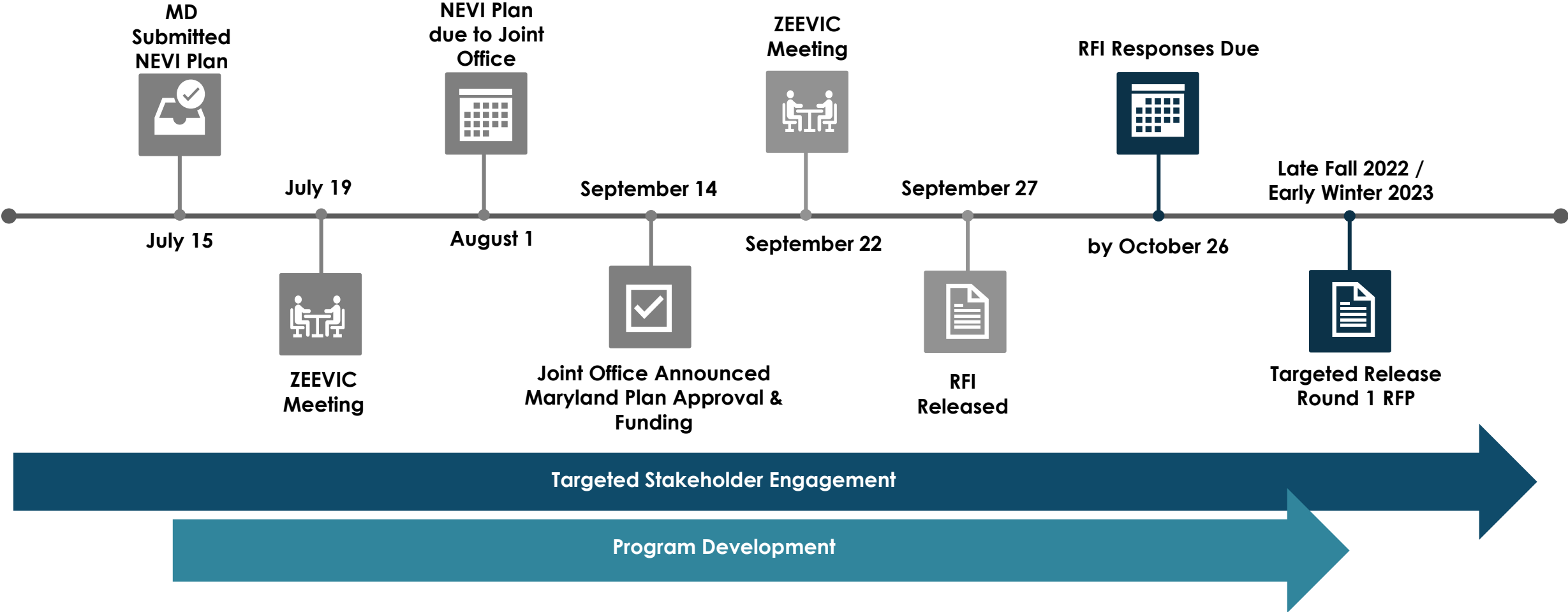


JULY 15, 2022



- All states submitted plans to the Joint Office August 1, 2022 (MD was one of the **first**)
- **\$57,500,000** for investment in Maryland (after set-asides)
- **Maryland Goals:**
 1. Certify Corridors
 2. Invest in Communities per **ZEEVIC**

NEVI Timeline



Involving Local Partners In NEVI

NEVI Plan Components



Introduction



State Agency Coordination



Public Engagement



Plan Vision & Goals



Contracting



Existing & Future Conditions



EVSE Deployment



Implementation



Civil Rights



Equity Considerations



Labor & Workplace Considerations



Cybersecurity



Program Evaluation



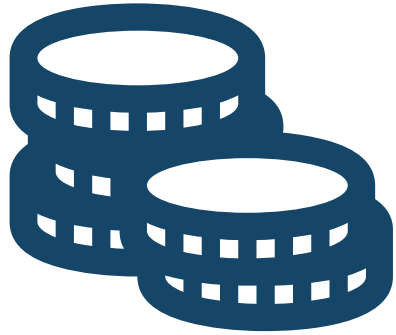
Discretionary Exceptions

 Areas where local govts can be involved

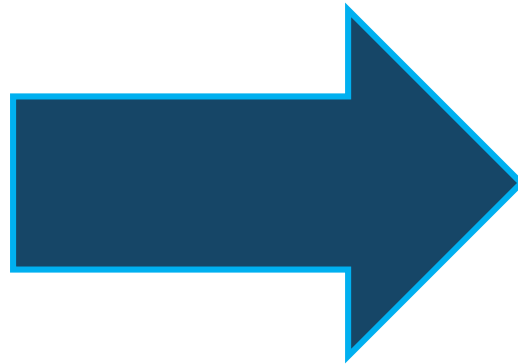
NEVI Goals



Equity - Justice40



**At least 40% of the
overall benefits of
federal investments**



**Disadvantaged
Communities**

Outreach

- 3 Webinars
 - 332 Total Participants
 - Interactive Polling and Q&As
 - Summarized on ZEVIP Website
- MetroQuest Survey
 - 793 Total Participants
 - 500 Participants after NEVI Plan submission
- Presentations
 - ZEEVIC, MPOs, Non-Profits, etc.
- ZEEVIC Outreach Activities
 - 6 Community Events in 2022
 - 5 Completed Events
 - Baltimore, Salisbury, Boonsboro, Westminster, Cumberland
 - 1 Upcoming Event - Leonardtown

Maryland ZEVIP Stakeholder Survey More at <https://evplan.mdot.maryland.gov/>



1 Introduction
Maryland Zero Emission Vehicle Infrastructure Plan

Introduction
Maryland is required to develop and submit a plan to Federal Highway Administration (FHWA) to access National Electric Vehicle Infrastructure (NEVI) formula funding. The **Maryland Zero Emission Vehicle Infrastructure Plan (ZEVIP)** will be developed jointly by the Maryland Department of Transportation and the Maryland Electric Administration (MEA) and in collaboration with our stakeholders. The plan will outline the state's strategy for accessible charging infrastructure and electric vehicle infrastructure.

Introduction
Please take a moment to answer some questions that will help shape Maryland's EV infrastructure plan.

2 GOAL RATING
3 PRIORITIZATION
4 MAPPING
5 WRAP UP

Next

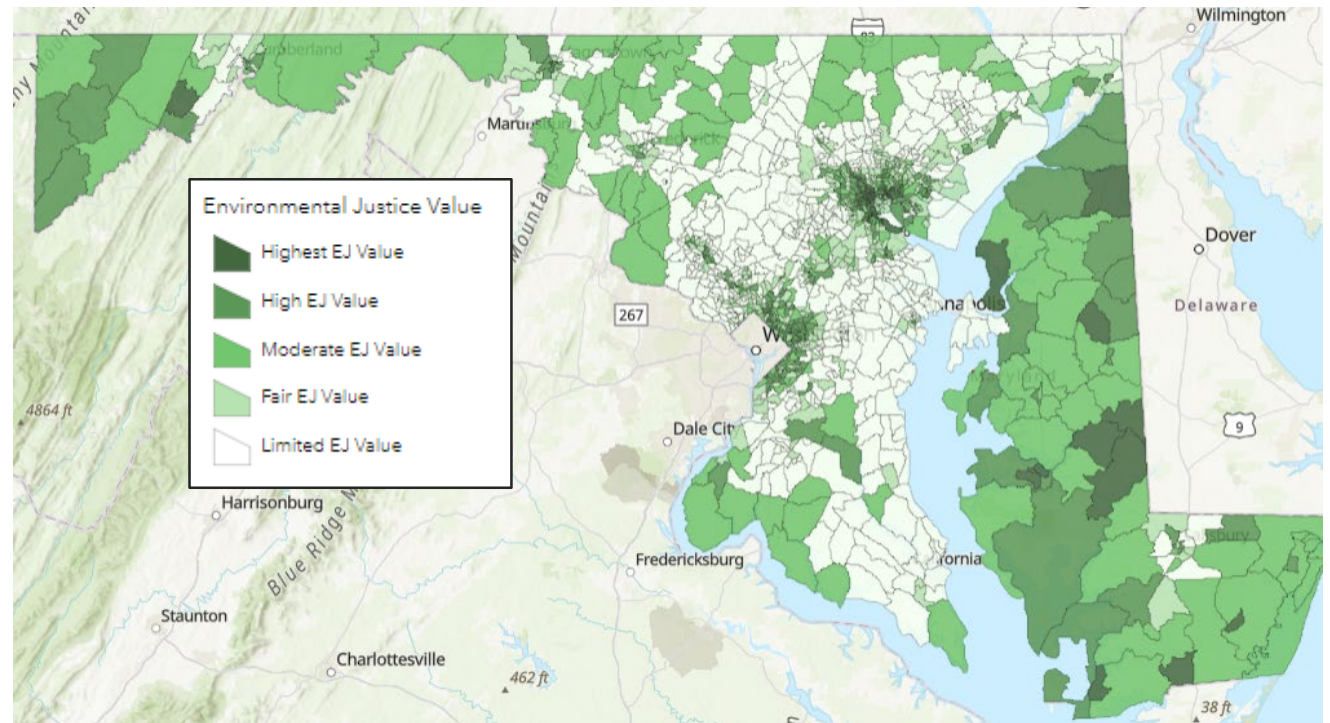


NEVI Toolkit

- Developed to assist in site identification, evaluation, & tracking
- Converts Four Areas:
 - Transportation, Land Use, Environmental Justice
 - Each with different weight

Environmental Justice Score

- National Datasets
 - Justice40
 - CDC Social Vulnerability Index
 - USDOT Historically Disadvantage Communities
- State Datasets
 - UMD/MDE EJSCREEN
 - DHCD Rural Areas



Role of Local Governments

Certify AFCs

- ✓ Approval of permits for the installation of EVSEs

Community Investment

- ✓ Identification of communities for investment
 - ✓ Focus on EJ/Rural
- ✓ Approval of permits for the installation of EVSEs
- ✓ Zoning & permits requirements support the installation of EVSEs

Other

- ✓ Identification of community/EJ groups and organizations to include within stakeholder & public engagement
- ✓ Support & encourage workforce development programs & trainings

Resources

NEVI Website:

Evplan.mdot.Maryland.gov

NEVI Planning ToolKit:

<https://storymaps.arcgis.com/stories/b83f23cdf1e349a8bd314c9eaf647c73>

NEVI RFI:

https://emma.maryland.gov/page.aspx/en/bpm/process_manage_extranet/49012

Questions or Comments:

Email: Evplan@mdot.Maryland.gov

Contact



Dan Janousek

Office of Planning and Capital Programming
djanousek@mdot.state.md.us