



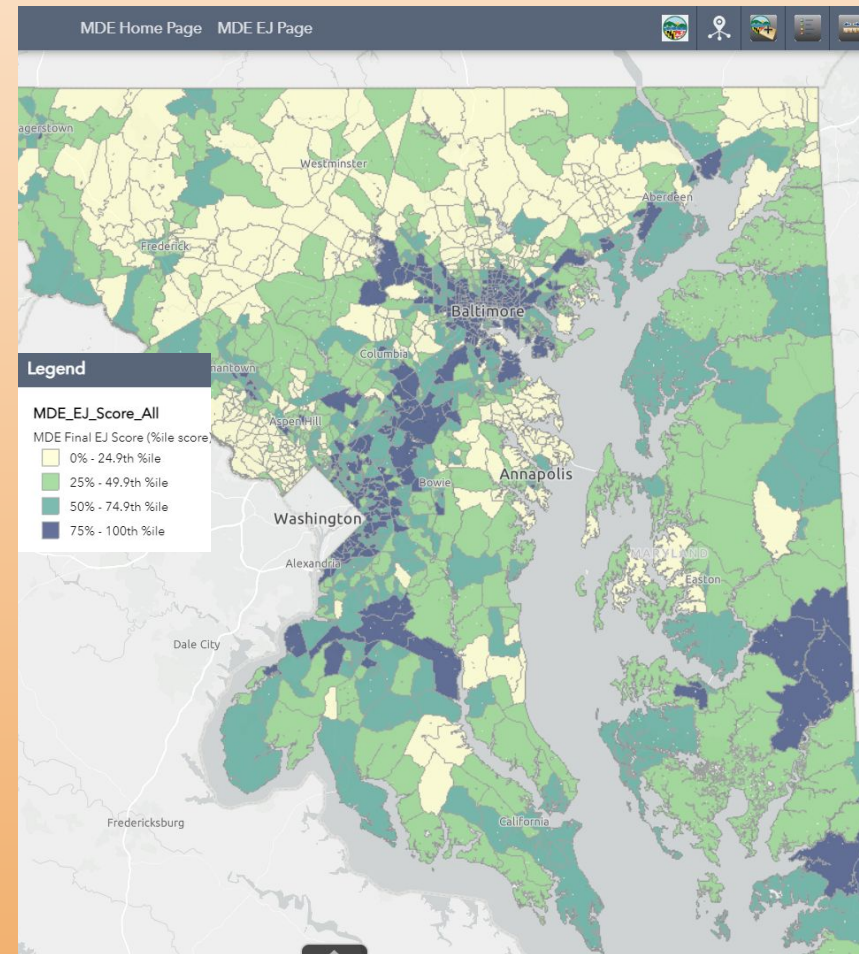
The Maryland Department of the Environment: Air Pollution Reduction Tools

Noble Smith
Air and Radiation Administration



Agenda

- Environmental Justice
- Past Legislative Action
- Community Partnerships
- Overview
- Enhanced Inspections
- Anti-Idling
- Local Air Monitoring
- Climate Pollution Reduction





Maryland and Environmental Justice



Secretary Serena McIlwain with Turner's Station community leadership.

As Secretary of the Maryland Department of the Environment, Secretary McIlwain stated that **Environmental Justice is one of her top priorities** for Maryland and ensuring that no Marylander is left behind.

In January, Secretary McIlwain announced the appointment of Aneca Y. Atkinson as the agency's **first** Assistant Secretary for Environmental Justice.

Since her appointment, Assistant Secretary Atkinson has lead efforts to connect state resources to communities that have disproportionately experienced pollution and



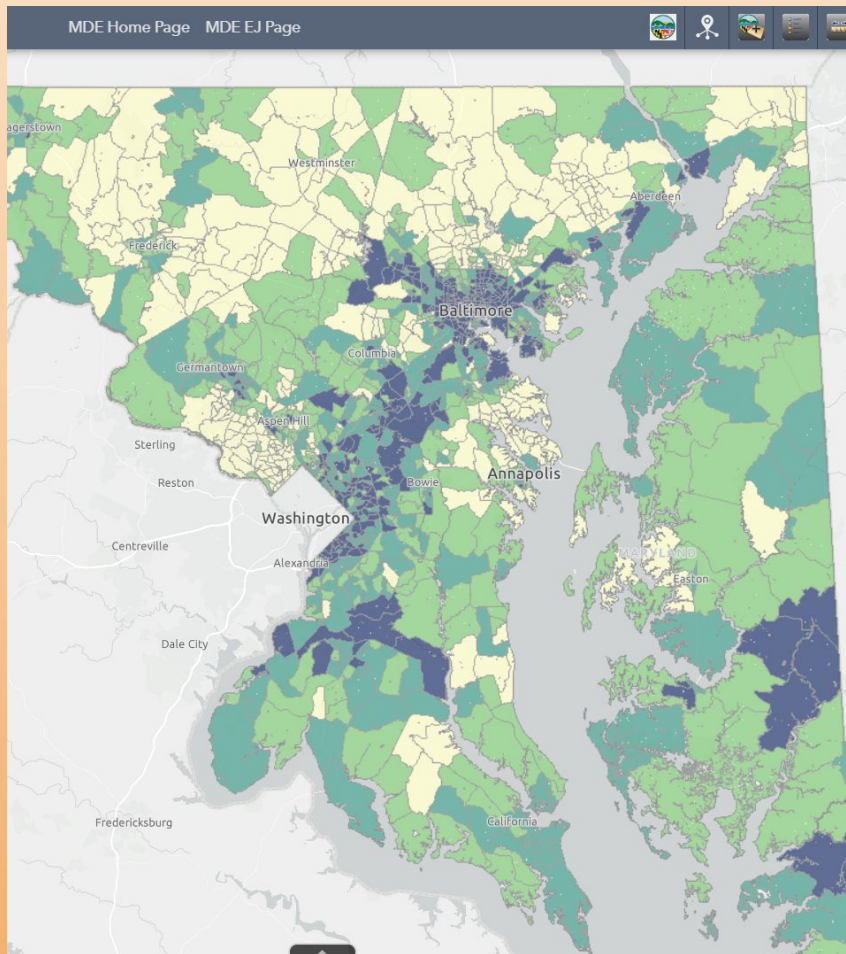
Past Legislative Action



- Under HB 970 of 2003, **Environmental Justice** was defined in Maryland state law as "equal protection from environmental and public health hazards for all people regardless of race, income, culture, and social status."
- Under *HB 1200* of 2021, the Maryland General Assembly defined *Overburdened Community* and *Underserved Community* based on 24 demographic and environmental health indicators.
 - Based on this criteria, MDE was able to develop an EJ Screening Tool which maps these indicators by census tract.
 - In MDE, all permit applications must go through the MDE EJ Tool during the public review process.



Community Partnerships



- In November of 2022, EPA selected MDE, in conjunction with the University of Maryland (UMD) and community partners, for an almost \$500k American Rescue Plan (ARP) grant for local air quality monitoring networks.
- MDE/UMD are partnering with three communities under the ARP grant:
 - Cheverly (Prince George County)
 - Curtis Bay (Baltimore City)
 - Turner's Station (Baltimore County)
- Since 2023, a Steering Committee comprised of MDE, UMD, and community representatives from each of the three communities has been meeting bi-weekly.



Partnership Actions

1. Conducting inspections at permitted emission sources.
2. Collaborating with the Maryland State Police to complete area-wide scans and observations at non-permitted sources where diesel trucks or buses idle for long periods.
3. Using regulatory monitors to calibrate the community owned sensors and performed an analysis of PM2.5 levels.
4. Meeting bi-weekly with community partners.
 - Coordination with specific sources in Partner Communities
 - Connecting Federal and State resources with partners



Partnership Outcomes

The data and analysis from previous community/university partnerships provided a starting point for MDE to conduct follow-up activities including:

- continued use of the community-based air monitoring/sensor network and further community input to target inspection efforts and other analyses;
- reduction in unnecessary, potentially illegal idling;
- increased efforts with academic partners, and EPA to improve techniques and tools for evaluating potentially inequitable exposure to air pollution; and
- identification of other potential partnership opportunities with the community partners.



Pollution Reduction Tools: Enhanced Inspection Initiatives



Action: MDE has been integrating community input and community-based air monitoring/sensor network to target inspection efforts and other analyses in the Cheverly area, including fugitive dust.

MDE is continuing to conduct targeted site visits at facilities identified by community partners.

MDE engages directly with sources that have community complaints.

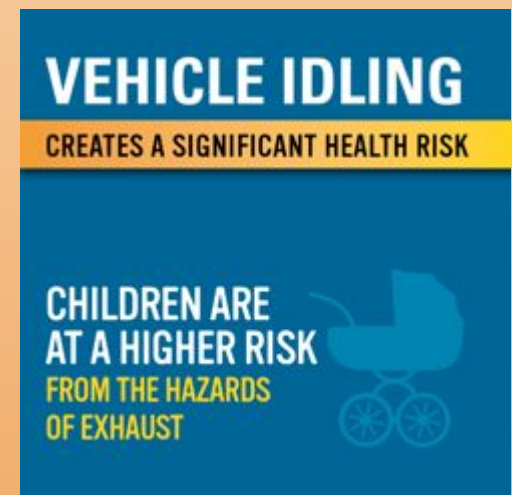
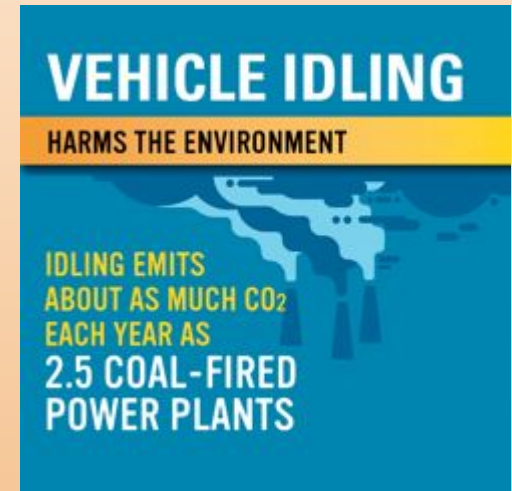


Pollution Reduction Tools: Anti-Idling

Action: MDE distributes anti-idling education and outreach at community events, and encourages citizens to refer idling complaints to the MDE air pollution hotline- 410-537-3215.

While MDE does not have enforcement authority over idling, the Department referred, and will continue to refer those complaints to the MSP/local police, counties, municipalities and private entities to address non-compliance.

Free educational and outreach resources are available at MDE's website
<https://mde.maryland.gov/programs/air/MobileSources/idlefreeMD/Pages/index.aspx>





Pollution Reduction Tools: Anti-Idling

The Maryland State Police (MSP) conducts a commercial motor vehicle inspection and enforcement initiative at the request of MDE.

The initiative's ultimate goals are to educate drivers on Maryland's anti-idling laws and decrease future environmental impact. Each inspection was accompanied by the issuance of the MDE anti-idling compliance advisory letter.

MDE has worked with the MSP to set-up the yearly education and enforcement initiatives





Pollution Reduction Tools: Locally Owned AQM Networks

Action: MDE worked with our community partners in Cheverly, Turner Station, and Curtis Bay to identify pollutants of concern and their sources.

Each community partner received a sensor package that will monitor the following pollutants:

Black Carbon, carbon monoxide (CO), nitric oxide (NO), nitrogen dioxide (NO₂), ozone (O₃), pm (PM_{1.0}, PM_{2.5}, PM₁₀), total volatile organic compounds (TVOC)



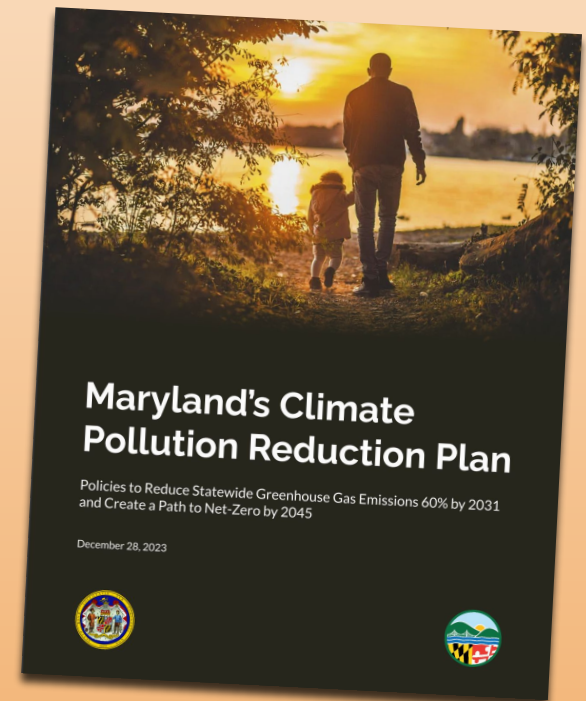


Pollution Reduction Tools: Climate Pollution Reduction

Maryland's nation-leading emissions reduction goals and the requirements for this Plan were established by the Climate Solutions Now Act of 2022.

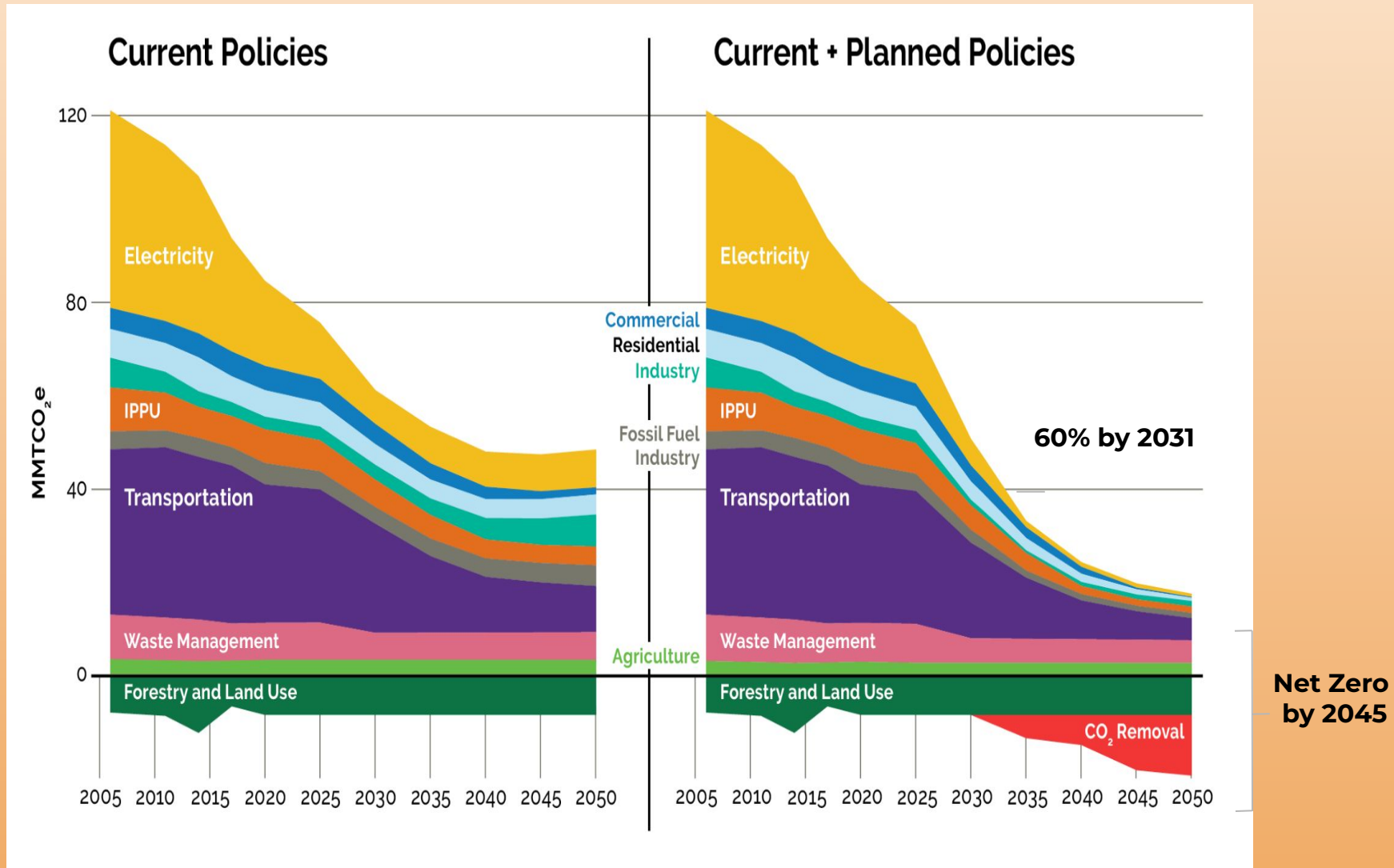
MDE's final plan to reduce statewide greenhouse gas emissions 60% from 2006 levels by 2031 and set the state on a path to achieve net-zero emissions by 2045.

The full plan is available at mde.maryland.gov.





Current and New Policies Achieve the State's Pollution Reduction Goals





Questions/Comments/Follow-Up

Noble Smith

Air and Radiation Administration

Maryland Department of the Environment

1800 Washington Boulevard

Baltimore, Maryland 21230

noble.smith1@maryland.gov

410-537-3041 (O-Baltimore)