

# REPORT ON CRIME AND CRIME CONTROL



**R**egional crime statistics of police agencies that participate in the Metropolitan Washington Council of Governments (COG) Police Chiefs Committee are compiled, reviewed and published in COG's "Report on Crime and Crime Control" Year 2004 Summary.

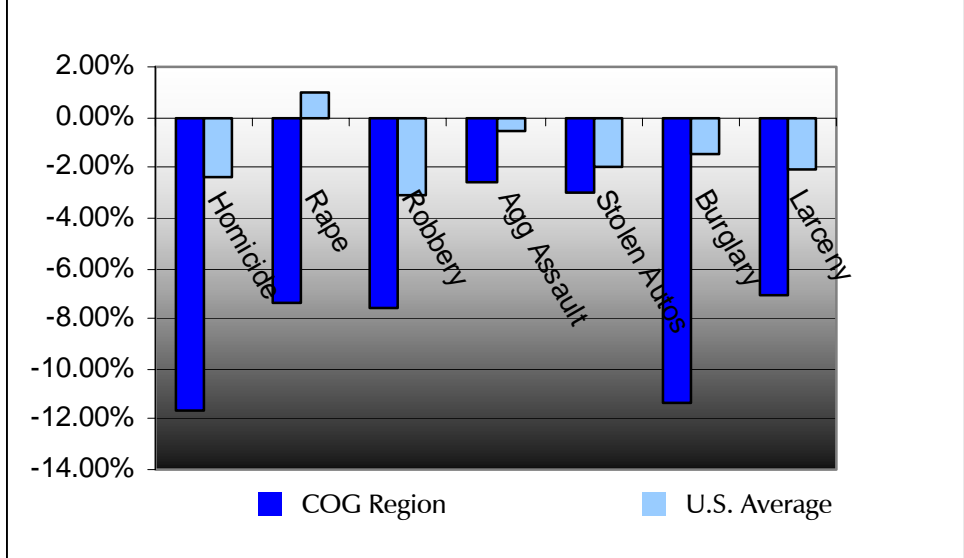
The COG report covers the most serious crimes, classed as Part I crimes, which include violent crime categories (criminal homicide, forcible rape, robbery, aggravated assault) and property crimes (burglary, larceny, and motor vehicle theft).

In 2004, there were 160,380 Part I crimes compared to 171,748 Part I crimes reported in 2003, a reduction of 6.6%. The overall regional Crime Index (crimes per thousand residents) was 35.3 in 2004 compared to 38.3 in 2003, a 2.6% reduction.

With the regional and national crime rates showing reductions, 2004 ended in a favorable trend for the region as well as the country thanks to improved funding, implementing new technology, information sharing, and public awareness.

With continued generous and positive political and public support the COG region's membership moves forward with high expectations for future successful crime reduction results.

Percentage Change of Part I Crimes Between 2003 and 2004



*The region compared well with the national crime rate showing reductions in all categories.*

- Compared to the 6.6% decrease in Part I crimes between 2003 and 2004, the national crime rate dropped just 1%.
- The regional Crime Index of 35.3 crimes per thousand residents was less than the national rate of 39.8.

FOR MORE INFORMATION

*The data highlighted in this summary is compiled annually by the Metropolitan Washington Council of Governments (COG) from data supplied by local police departments, sheriff's offices, and state and federal police services. The report informs government officials and the public on the nature of the crime problem in the COG region and provides law enforcement with criminal statistics for administrative and operational use.*



## 2004 PART I CRIME STATISTICS

COG DEPARTMENTS	REPORTING METHOD	HOMICIDE	RAPE	ROBBERY	AGG. ASSAULT	BURGLARY	LARCENY	M/V THEFT	TOTAL OFFENSES
Alexandria Police Department	NIBRS	2	31	187	213	426	2,937	635	4,431
Arlington County Police Department	NIBRS	1	26	184	200	361	3,839	493	5,104
Bowie	UCR	-1	-6	-65	-58	-213	-919	-317	-1,579
College Park	UCR	-5	-4	-47	-25	-139	-644	-206	-1,070
D.C. Metropolitan Police Department	UCR	198	218	3,057	3,863	3,943	13,756	8,136	33,171
City of Fairfax Police Department	NIBRS	0	4	17	23	66	641	72	823
Fairfax County Police Department	UCR	8	47	548	375	1,515	14,737	1,930	19,160
Falls Church City Police Department	UCR	1	2	9	14	27	321	48	422
Frederick County Sheriff's Office	UCR	1	12	14	146	254	873	72	1,372
Gaithersburg Police Department	UCR	-3	-8	-76	-89	-251	-1,537	-183	-2,147
Greenbelt Police Department	UCR	3	9	105	53	151	800	392	1,513
Loudoun County Sheriff's Office	NIBRS	2	35	45	85	284	2,492	183	3,126
City of Manassas Police Department	NIBRS	3	21	42	83	139	871	142	1,301
Manassas Park Police Department	UCR	0	6	7	20	28	255	44	360
Montgomery County Department of	UCR	18	139	788	967	3,743	15,503	2,562	23,720
Prince George's County Police	UCR	134	259	3,527	3,220	6,429	22,988	16,332	52,889
Prince William County Police	UCR	6	27	206	282	974	5,927	819	8,241
Rockville City Police Department	UCR	0	-4	-35	-34	-207	-755	-111	-1,146
Takoma Park Police Department	UCR	0	2	58	29	133	410	154	786
<b>Subtotal</b>		377	838	8,794	9,573	18,473	86,350	32,014	156,419
ASSOCIATE DEPARTMENTS	REPORTING METHOD	HOMICIDE	RAPE	ROBBERY	AGG. ASSAULT	BURGLARY	LARCENY	M/V THEFT	TOTAL OFFENSES
CIA- Security Protective Service	UCR								
Fauquier County Sheriff's Office	NIBRS	1	5	6	49	74	577	35	747
Federal Protective Service	UCR								
METRO Transit Police	NIBRS	0	4	290	89	0	580	175	1,138
Military District of Washington	COPS	1	5	1	31	1	161	9	209
M-NCPPC Police (Montgomery Co)	UCR	0	0	9	60	18	157	6	250
M-NCPPC Police (Prince George's Co)	UCR								
Maryland State Police (Metro Area)	UCR	0	0	3	21	2	156	144	326
Metro. Wash. Airports Authority	UCR	0	0	1	4	20	177	76	278
National Institutes of Health Police	UCR	0	0	0	6	1	156	0	163
Pentagon Force Protective Agency	UCR	0	1	0	2	0	170	0	173
U.S. Capitol Police	UCR	0	0	-3	-5	-2	-98	-3	-111
U.S. Secret Service	UCR								
U.S. Park Police	UCR	1	20	44	92	15	227	18	417
Virginia State Police (Div. 7)	NIBRS	6	4	1	9	3	96	141	260
<b>Subtotal</b>		9	39	355	363	134	2,457	604	3,961
<b>GRAND TOTAL</b>		386	877	9,149	9,936	18,607	88,807	32,618	160,380

\* The data contained in this report is based on information that was provided to MWCOG by the individual jurisdictions.

- **It must be noted that reporting methods are not uniform throughout this report since some departments used the Uniform Crime Reporting (UCR) while others used the National Incident Based Reporting System (NIBRS).** Recognizing the need for additional information about crime, the FBI launched NIBRS as an enhanced UCR Program . The FBI recognized that conversion to the new system would be gradual, so it is appropriate for agencies to still report under UCR. As a general rule, NIBRS crime rates tend to be higher than UCR rates, primarily because NIBRS statistically counts all separate violations within a single criminal event. UCR counts only the most serious crime. The average difference, however, is small.
- For some departments, only partial data or no data at all was collected. Where data is not shown, it was not provided. Highlighted departments indicate data that is reported via another department. These numbers are reported with a dash.
- Metro Transit data provided its own data effective in 2004. Previously, Metro Transit data reflected reporting by another agency.



**PART I CRIMES 2004 vs. 2003 BY DEPARTMENT**

<b>ALEXANDRIA P.D.</b>				
	<b>2004</b>	<b>2003</b>	<b>INC/DEC</b>	<b>%</b>
Homicide	2	4	-2	-50.0%
Rape	31	26	5	19.2%
Robbery	187	179	8	4.5%
A. Assault	213	192	21	10.9%
Burglary	426	497	-71	-14.3%
Larceny	2,937	3,754	-817	-21.8%
M/V Theft	635	640	-5	-0.8%
<b>Total Part I</b>	<b>4,431</b>	<b>5,292</b>	<b>-861</b>	<b>-16.3%</b>

<b>ARLINGTON CO. P.D.</b>				
	<b>2004</b>	<b>2003</b>	<b>INC/DEC</b>	<b>%</b>
Homicide	1	3	-2	-66.7%
Rape	26	30	-4	-13.3%
Robbery	184	208	-24	-11.5%
A. Assault	200	204	-4	-2.0%
Burglary	361	374	-13	-3.5%
Larceny	3,839	4,006	-167	-4.2%
M/V Theft	493	599	-106	-17.7%
<b>Total Part I</b>	<b>5,104</b>	<b>5,424</b>	<b>-320</b>	<b>-5.9%</b>

<b>BOWIE</b>				
	<b>2004</b>	<b>2003</b>	<b>INC/DEC</b>	<b>%</b>
Homicide	1	2	-1	-50.0%
Rape	6	2	4	200.0%
Robbery	65	67	-2	-3.0%
A. Assault	58	84	-26	-31.0%
Burglary	213	227	-14	-6.2%
Larceny	919	863	56	6.5%
M/V Theft	317	265	52	19.6%
<b>Total Part I</b>	<b>1,579</b>	<b>1,510</b>	<b>69</b>	<b>4.6%</b>

<b>COLLEGE PARK</b>				
	<b>2004</b>	<b>2003</b>	<b>INC/DEC</b>	<b>%</b>
Homicide	5	0	5	500.0%
Rape	4	2	2	100.0%
Robbery	47	50	-3	-6.0%
A. Assault	25	51	-26	-51.0%
Burglary	139	168	-29	-17.3%
Larceny	644	602	42	7.0%
M/V Theft	206	179	27	15.1%
<b>Total Part I</b>	<b>1,070</b>	<b>1,052</b>	<b>18</b>	<b>1.7%</b>

<b>DISTRICT OF COLUMBIA-MPD</b>				
	<b>2004</b>	<b>2003</b>	<b>INC/DEC</b>	<b>%</b>
Homicide	198	248	-50	-20.2%
Rape	218	273	-55	-20.1%
Robbery	3,057	3,836	-779	-20.3%
A. Assault	3,863	4,482	-619	-13.8%
Burglary	3,943	4,670	-727	-15.6%
Larceny	13,756	17,362	-3,606	-20.8%
M/V Theft	8,136	9,549	-1,413	-14.8%
<b>Total Part I</b>	<b>33,171</b>	<b>40,420</b>	<b>-7,249</b>	<b>-17.9%</b>

<b>CITY OF FAIRFAX P.D.</b>				
	<b>2004</b>	<b>2003</b>	<b>INC/DEC</b>	<b>%</b>
Homicide	0	0	0	0.0%
Rape	4	4	0	0.0%
Robbery	17	28	-11	-39.3%
A. Assault	23	38	-15	-39.5%
Burglary	66	78	-12	-15.4%
Larceny	641	660	-19	-2.9%
M/V Theft	72	56	16	28.6%
<b>Total Part I</b>	<b>823</b>	<b>864</b>	<b>-41</b>	<b>-4.7%</b>

<b>FAIRFAX CO. P.D.</b>				
	<b>2004</b>	<b>2003</b>	<b>INC/DEC</b>	<b>%</b>
Homicide	8	9	-1	-11.1%
Rape	47	80	-33	-41.3%
Robbery	548	540	8	1.5%
A. Assault	375	399	-24	-6.0%
Burglary	1,515	1,713	-198	-11.6%
Larceny	14,737	16,082	-1,345	-8.4%
M/V Theft	1,930	1,989	-59	-3.0%
<b>Total Part I</b>	<b>19,160</b>	<b>20,812</b>	<b>-1,652</b>	<b>-7.9%</b>

<b>FALLS CHURCH CITY P.D.</b>				
	<b>2004</b>	<b>2003</b>	<b>INC/DEC</b>	<b>%</b>
Homicide	1	0	1	100.0%
Rape	2	1	1	100.0%
Robbery	9	5	4	80.0%
A. Assault	14	11	3	27.3%
Burglary	27	39	-12	-30.8%
Larceny	321	297	24	8.1%
M/V Theft	48	48	0	0.0%
<b>Total Part I</b>	<b>422</b>	<b>401</b>	<b>21</b>	<b>5.2%</b>



**PART I CRIMES 2004 vs. 2003 BY DEPARTMENT**

<b>FREDERICK CO. SHERIFF</b>				
	<b>2004</b>	<b>2003</b>	<b>INC/DEC</b>	<b>%</b>
Homicide	1	1	0	0.0%
Rape	12	12	0	0.0%
Robbery	14	15	-1	-6.7%
A. Assault	146	155	-9	-5.8%
Burglary	254	260	-6	-2.3%
Larceny	873	970	-97	-10.0%
M/V Theft	72	98	-26	-26.5%
<b>Total Part I</b>	<b>1,372</b>	<b>1,511</b>	<b>-139</b>	<b>-9.2%</b>

<b>GAITHERSBURG P.D.</b>				
	<b>2004</b>	<b>2003</b>	<b>INC/DEC</b>	<b>%</b>
Homicide	3	2	1	50.0%
Rape	8	14	-6	-42.9%
Robbery	76	84	-8	-9.5%
A. Assault	89	116	-27	-23.3%
Burglary	251	336	-85	-25.3%
Larceny	1,537	1,961	-424	-21.6%
M/V Theft	183	216	-33	-15.3%
<b>Total Part I</b>	<b>2,147</b>	<b>2,729</b>	<b>-582</b>	<b>-21.3%</b>

<b>GREENBELT P.D.</b>				
	<b>2004</b>	<b>2003</b>	<b>INC/DEC</b>	<b>%</b>
Homicide	3	3	0	0.0%
Rape	9	11	-2	-18.2%
Robbery	105	80	25	31.3%
A. Assault	53	46	7	15.2%
Burglary	151	140	11	7.9%
Larceny	800	952	-152	-16.0%
M/V Theft	392	399	-7	-1.8%
<b>Total Part I</b>	<b>1,513</b>	<b>1,631</b>	<b>-118</b>	<b>-7.2%</b>

<b>LOUDOUN COUNTY SHERIFF</b>				
	<b>2004</b>	<b>2003</b>	<b>INC/DEC</b>	<b>%</b>
Homicide	2	1	1	100.0%
Rape	35	31	4	12.9%
Robbery	45	44	1	2.3%
A. Assault	85	138	-53	-38.4%
Burglary	284	357	-73	-20.4%
Larceny	2,492	2,904	-412	-14.2%
M/V Theft	183	202	-19	-9.4%
<b>Total Part I</b>	<b>3,126</b>	<b>3,677</b>	<b>-551</b>	<b>-15.0%</b>

<b>CITY OF MANASSAS P.D.</b>				
	<b>2004</b>	<b>2003</b>	<b>INC/DEC</b>	<b>%</b>
Homicide	3	4	-1	-25.0%
Rape	21	19	2	10.5%
Robbery	42	33	9	27.3%
A. Assault	83	70	13	18.6%
Burglary	139	105	34	32.4%
Larceny	871	901	-30	-3.3%
M/V Theft	142	151	-9	-6.0%
<b>Total Part I</b>	<b>1,301</b>	<b>1,283</b>	<b>18</b>	<b>1.4%</b>

<b>MANASSAS PARK P.D.</b>				
	<b>2004</b>	<b>2003</b>	<b>INC/DEC</b>	<b>%</b>
Homicide	0	1	-1	-100.0%
Rape	6	3	3	100.0%
Robbery	7	7	0	0.0%
A. Assault	20	15	5	33.3%
Burglary	28	25	3	12.0%
Larceny	255	232	23	9.9%
M/V Theft	44	49	-5	-10.2%
<b>Total Part I</b>	<b>360</b>	<b>332</b>	<b>28</b>	<b>8.4%</b>

<b>MONTGOMERY CO. P.D.</b>				
	<b>2004</b>	<b>2003</b>	<b>INC/DEC</b>	<b>%</b>
Homicide	18	21	-3	-14.3%
Rape	139	135	4	3.0%
Robbery	788	1,004	-216	-21.5%
A. Assault	967	954	13	1.4%
Burglary	3,743	4,095	-352	-8.6%
Larceny	15,503	17,875	-2,372	-13.3%
M/V Theft	2,562	3,489	-927	-26.6%
<b>Total Part I</b>	<b>23,720</b>	<b>27,573</b>	<b>-3,853</b>	<b>-14.0%</b>

<b>PRINCE GEORGE'S CO. P.D.</b>				
	<b>2004</b>	<b>2003</b>	<b>INC/DEC</b>	<b>%</b>
Homicide	134	118	16	13.6%
Rape	259	245	14	5.7%
Robbery	3,527	3,553	-26	-0.7%
A. Assault	3,220	3,003	217	7.2%
Burglary	6,429	7,332	-903	-12.3%
Larceny	22,988	22,007	981	4.5%
M/V Theft	16,332	15,338	994	6.5%
<b>Total Part I</b>	<b>52,889</b>	<b>51,596</b>	<b>1,293</b>	<b>2.5%</b>



## PART I CRIMES 2004 vs. 2003 BY DEPARTMENT

<b>PRINCE WILLIAM CO. P.D.</b>				
	<b>2004</b>	<b>2003</b>	<b>INC/DEC</b>	<b>%</b>
Homicide	6	13	-7	-53.8%
Rape	27	40	-13	-32.5%
Robbery	206	197	9	4.6%
A. Assault	282	270	12	4.4%
Burglary	974	966	8	0.8%
Larceny	5,927	5,563	364	6.5%
M/V Theft	819	755	64	8.5%
<b>Total Part I</b>	<b>8,241</b>	<b>7,804</b>	<b>437</b>	<b>5.6%</b>

<b>ROCKVILLE CITY P.D.</b>				
	<b>2004</b>	<b>2003</b>	<b>INC/DEC</b>	<b>%</b>
Homicide	0	2	-2	-100.0%
Rape	4	11	-7	-63.6%
Robbery	35	56	-21	-37.5%
A. Assault	34	72	-38	-52.8%
Burglary	207	236	-29	-12.3%
Larceny	755	1,383	-628	-45.4%
M/V Theft	111	172	-61	-35.5%
<b>Total Part I</b>	<b>1,146</b>	<b>1,932</b>	<b>-786</b>	<b>-40.7%</b>

<b>TAKOMA PARK P.D.</b>				
	<b>2004</b>	<b>2003</b>	<b>INC/DEC</b>	<b>%</b>
Homicide	0	2	-2	-100.0%
Rape	2	9	-7	-77.8%
Robbery	58	67	-9	-13.4%
A. Assault	29	29	0	0.0%
Burglary	133	156	-23	-14.7%
Larceny	410	447	-37	-8.3%
M/V Theft	154	176	-22	-12.5%
<b>Total Part I</b>	<b>786</b>	<b>886</b>	<b>-100</b>	<b>-11.3%</b>

### 2004 CALLS TO SERVICE

*In 2004, there were 3,219,363 calls to service by departments reporting in the region.*

<b>COG DEPARTMENTS</b>	<b>CALLS</b>
Alexandria Police Department	65,471
Arlington County Police Department	92,459
Bowie	-18,479
College Park	-10,634
D.C. Metropolitan Police Department	753,645
City of Fairfax Police Department	18,013
Fairfax County Police Department	257,420
Falls Church City Police Department	22,317
Frederick County Sheriff's Office	49,287
Greenbelt Police Department	36,365
Loudoun County Sheriff's Office	178,619
City of Manassas Police Department	54,051
Manassas Park Police Department	20,838
Montgomery County Department of Police	374,305
Prince George's County Police Department	529,576
Prince William County Police Department	200,389
Rockville City Police Department	-31,787
Takoma Park Police Department	16,966
<b>Subtotal</b>	<b>2,669,721</b>

<b>ASSOCIATE DEPARTMENTS</b>	<b>CALLS</b>
Fauquier County Sheriff's Office	31,679
METRO Transit Police	59,554
Military District of Washington	3,200
M-NCPPC Police (Montgomery Co)	71,459
Metro. Wash. Airports Authority Police	174,828
National Institutes of Health Police	28,924
Pentagon Force Protective Service	4,393
U.S. Capitol Police	49,217
U.S. Park Police	40,090
Virginia State Police/Div. 7	86,298
<b>Subtotal</b>	<b>549,642</b>



## COG POLICE CHIEFS COMMITTEE

<p><b>BUREAU OF ALCOHOL, TOBACCO, FIREARMS AND EXPLOSIVES, WFD</b>                  William J. Hoover, Special Agent in Charge</p>
<p><b>ALEXANDRIA POLICE DEPARTMENT</b>                  Chief Charles E. Samarra</p>
<p><b>ARLINGTON COUNTY POLICE DEPARTMENT</b>                  Chief M. Douglas Scott</p>
<p><b>CIA- SECURITY PROTECTIVE SERVICE</b>                  Chief Paul Dewey</p>
<p><b>DRUG ENFORCEMENT AGENCY, WASHINGTON FIELD OFFICE</b>                  Shawn Johnson, Special Agent in Charge</p>
<p><b>FAIRFAX CITY POLICE DEPARTMENT</b>                  Chief Richard Rappoport</p>
<p><b>FAIRFAX COUNTY POLICE DEPARTMENT</b>                  Chief David Rohrer</p>
<p><b>FALLS CHURCH CITY POLICE DEPARTMENT</b>                  Chief Robert T. Murray</p>
<p><b>FAUQUIER COUNTY SHERIFF'S OFFICE</b>                  Sheriff Charlie Ray Fox, Jr.</p>
<p><b>FEDERAL BUREAU OF INVESTIGATIONS, WASHINGTON FIELD OFFICE</b>                  Michael Mason, Assistant Director in Charge</p>
<p><b>FEDERAL PROTECTIVE SERVICE</b>                  Joe Trindal, Director</p>
<p><b>FREDERICK COUNTY SHERIFF'S OFFICE</b>                  Sheriff James W. Hagy</p>
<p><b>GAITHERSBURG POLICE DEPARTMENT</b>                  Chief Mary Ann Viverette</p>
<p><b>GREENBELT POLICE DEPARTMENT</b>                  Chief James R. Craze</p>
<p><b>LOUDOUN COUNTY SHERIFF'S OFFICE</b>                  Sheriff Stephen O. Simpson</p>
<p><b>CITY OF MANASSAS POLICE DEPARTMENT</b>                  Chief John Skinner</p>
<p><b>MANASSAS PARK POLICE DEPARTMENT</b>                  Chief John C. Evans</p>
<p><b>MARYLAND NATIONAL CAPITAL PARK POLICE</b>                  Montgomery County Division                  Chief Nathaniel Barber</p>
<p><b>MARYLAND NATIONAL CAPITAL PARK POLICE</b>                  Prince George's County Division                  Chief Larry Brownlee</p>

<p><b>MARYLAND STATE POLICE DEPARTMENT</b>                  Colonel Thomas Hutchins, Superintendent</p>
<p><b>METRO TRANSIT POLICE DEPARTMENT</b>                  Chief Polly Hanson</p>
<p><b>METROPOLITAN POLICE DEPARTMENT</b>                  Chief Charles Ramsey</p>
<p><b>METROPOLITAN WASHINGTON AIRPORTS AUTHORITY POLICE</b>                  Chief Leo Rossiter</p>
<p><b>MILITARY DISTRICT OF WASHINGTON</b>                  Colonel Arnaldo Claudio, Provost Marshal</p>
<p><b>MONTGOMERY COUNTY DEPARTMENT OF POLICE</b>                  Chief J. Thomas Manger</p>
<p><b>NATIONAL INSTITUTES OF HEALTH POLICE</b>                  Chief Alvin Hinton</p>
<p><b>PENTAGON FORCE PROTECTION AGENCY</b>                  Chief Rick Keevil</p>
<p><b>PRINCE GEORGE'S COUNTY POLICE DEPARTMENT</b>                  Chief Melvin High</p>
<p><b>PRINCE GEORGE'S COUNTY MUNICIPAL CHIEFS ASSOCIATION</b>                  Chief Frederick Keeney, Mount Rainier Police</p>
<p><b>PRINCE WILLIAM COUNTY POLICE DEPARTMENT</b>                  Chief Charlie T. Deane</p>
<p><b>ROCKVILLE CITY POLICE DEPARTMENT</b>                  Chief Terrance N. Treschuk</p>
<p><b>TAKOMA PARK POLICE DEPARTMENT</b>                  Chief Cynthia Creamer</p>
<p><b>U.S. CAPITOL POLICE</b>                  Chief Terrance W. Gainer</p>
<p><b>U.S. LIBRARY OF CONGRESS POLICE</b>                  Kenneth E. Lopez, Director</p>
<p><b>U.S. MARSHALS SERVICE</b>                  US Marshal George Walsh</p>
<p><b>U.S. PARK POLICE</b>                  Chief Dwight E. Pettiford</p>
<p><b>U.S. SECRET SERVICE UNIFORMED DIVISION</b>                  Anthony DeMasi                  Deputy Branch Commander</p>
<p><b>U.S. SECRET SERVICE</b>                  Washington Field Office                  James B. Burch, Special Agent in Charge</p>
<p><b>VIRGINIA STATE POLICE - DIVISION 7</b>                  Captain G. Michael Counts</p>