

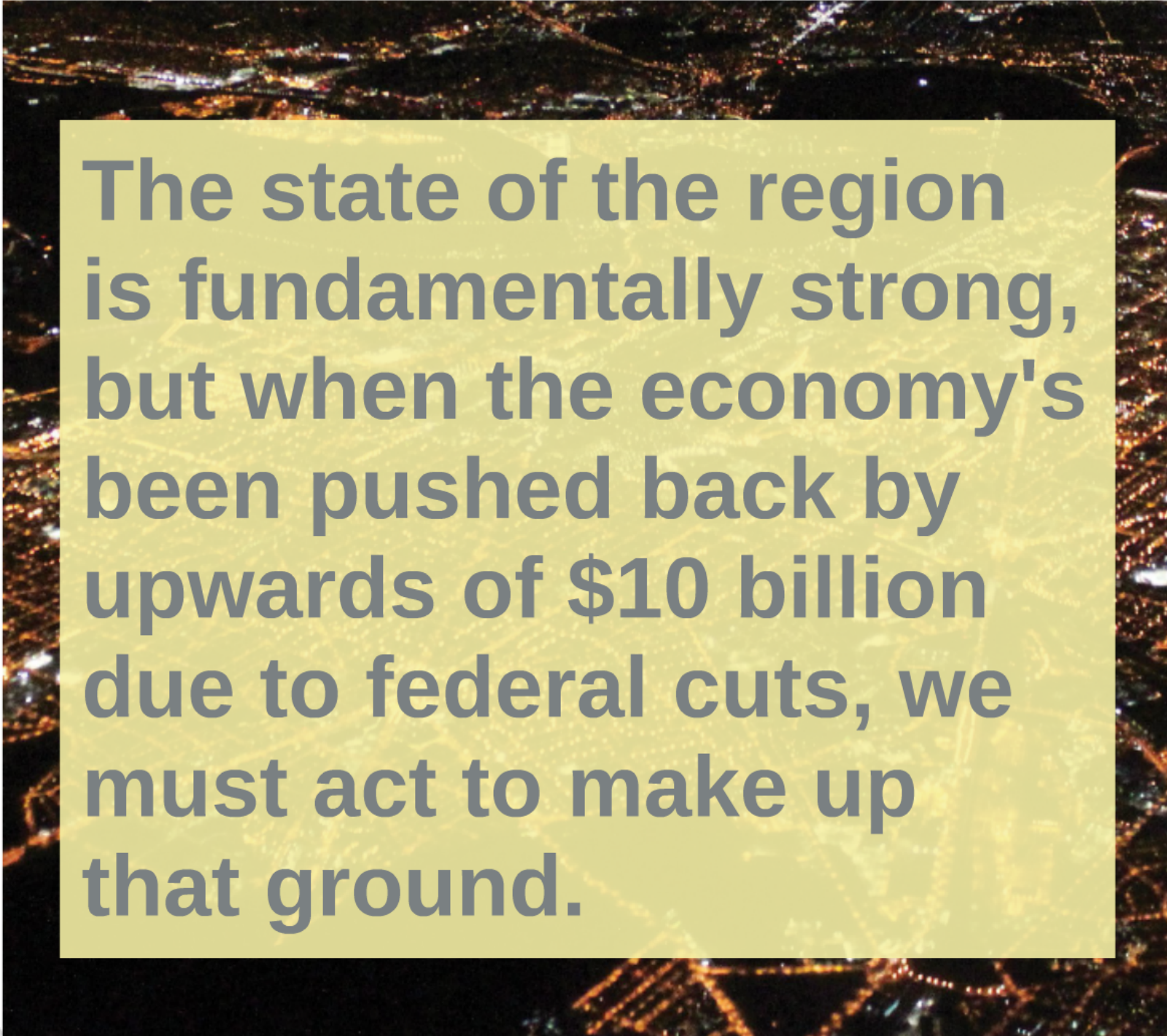


# STATE OF THE REGION

Economic  
Competitiveness  
Report

# 2016

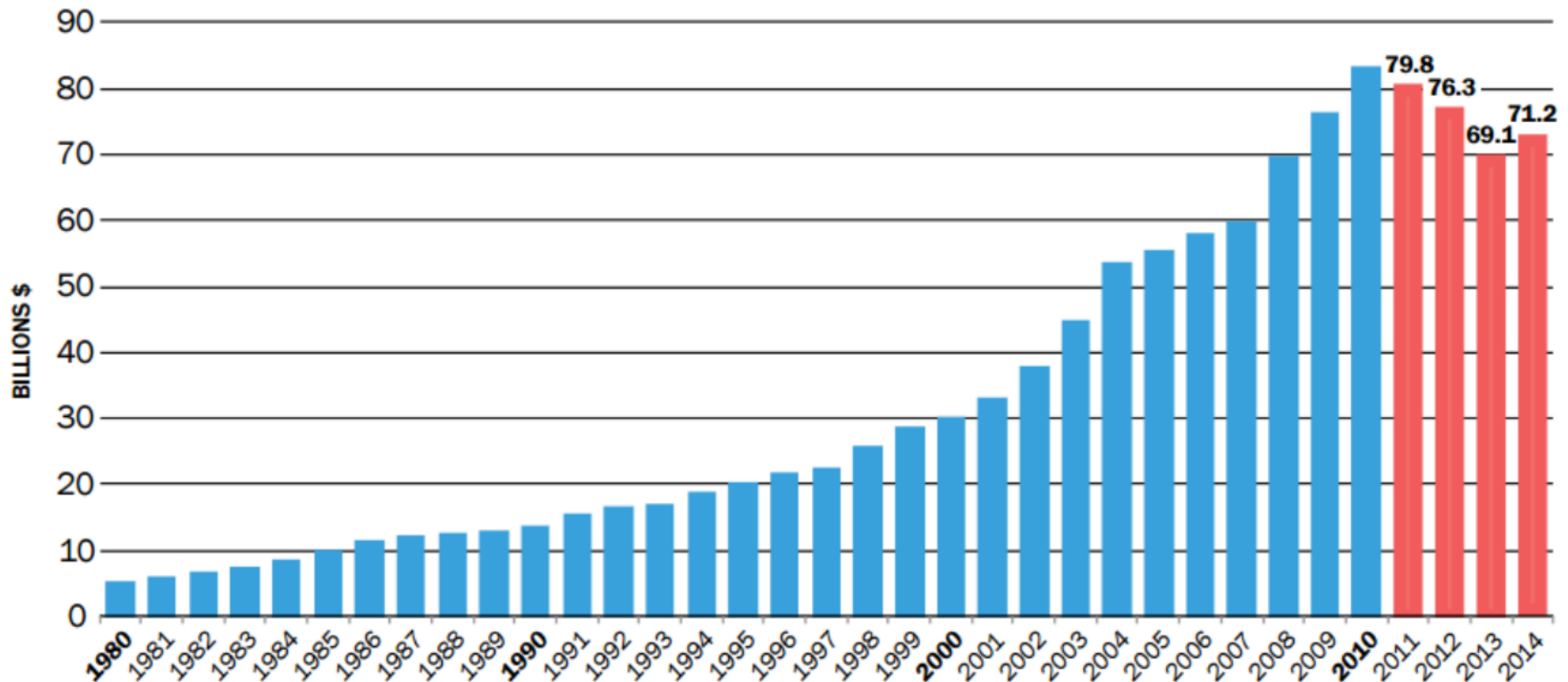




**The state of the region is fundamentally strong, but when the economy's been pushed back by upwards of \$10 billion due to federal cuts, we must act to make up that ground.**

Federal procurement spending declined by **more than \$10 billion** since 2010.

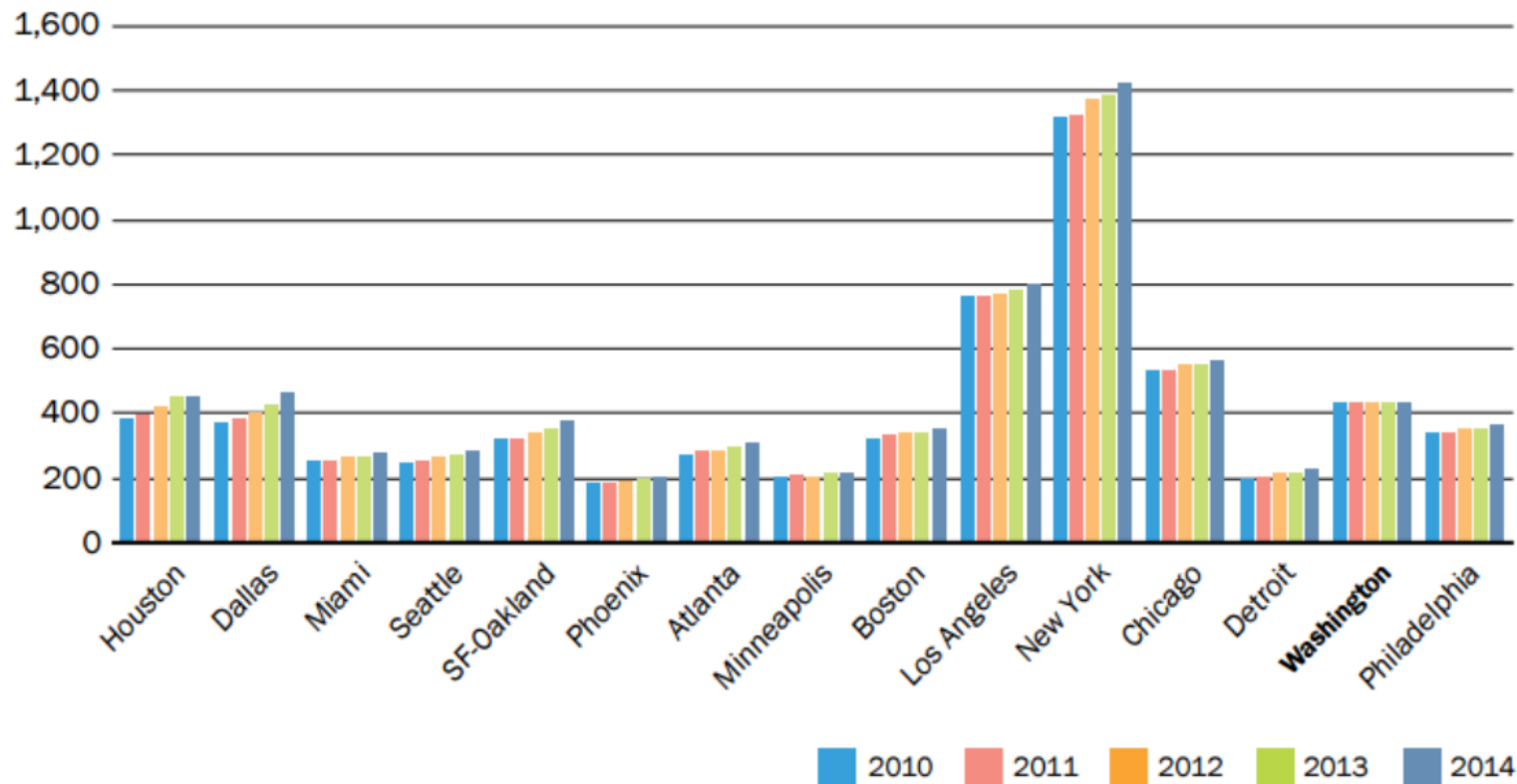
**Federal Procurement in Metropolitan Washington  
FY 1980-2014 (TOTAL \$1.16 TRILLION)**



Metropolitan Washington ranked **93rd** among the top 100 largest U.S. metro areas and **249th** among the 300 largest global metro areas in terms of its annual GRP growth between 2010 and 2014. Total GRP **\$435 billion** in 2014.

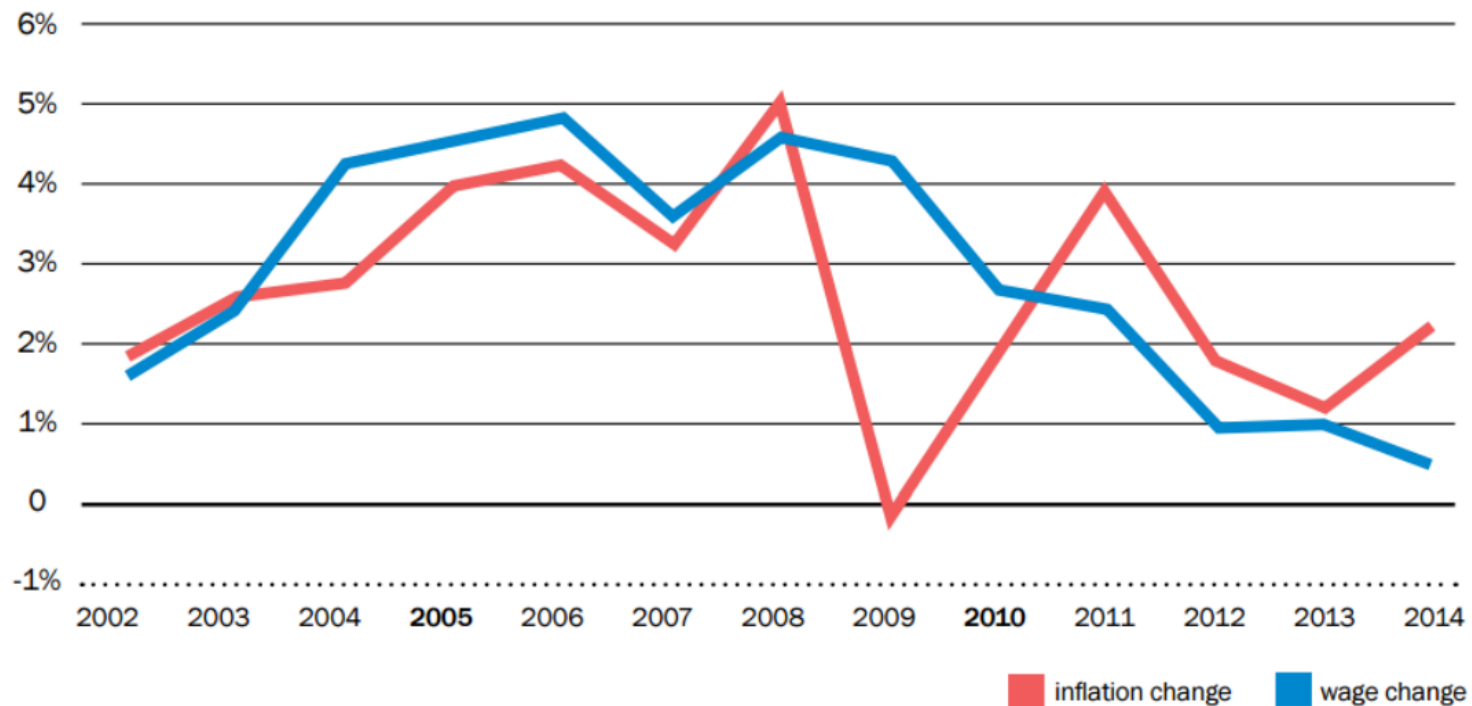
### Gross Regional Product in the 15 Largest Employment Metropolitan Areas, 2009 - 2014

DOLLARS IN TRILLIONS



Growth in inflation has **outpaced** regional median wages since 2011.

Changes in Wages and Inflation





“I think we need to move those things first that are the most feasible, that are the most **win-win**, and build momentum to work on some potentially harder things.”

Chuck Bean, Washington Business Journal



# STATE OF THE REGION

Economic  
Competitiveness  
Report

# 2016



# FOUR PILLARS OF ECONOMIC COMPETITIVENESS



**ECONOMIC CLIMATE**



**BUILT INFRASTRUCTURE**



**HUMAN INFRASTRUCTURE**



**QUALITY OF LIFE**

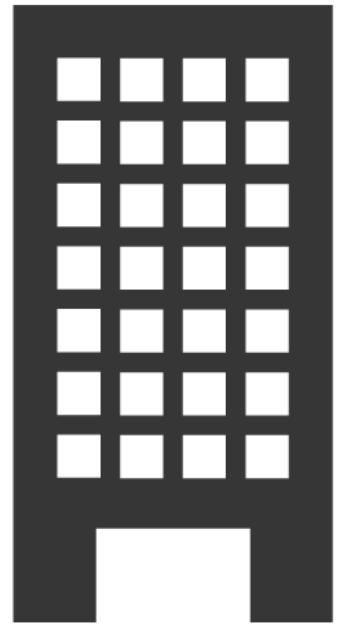




# ECONOMIC CLIMATE



# BUILT INFRASTRUCTURE

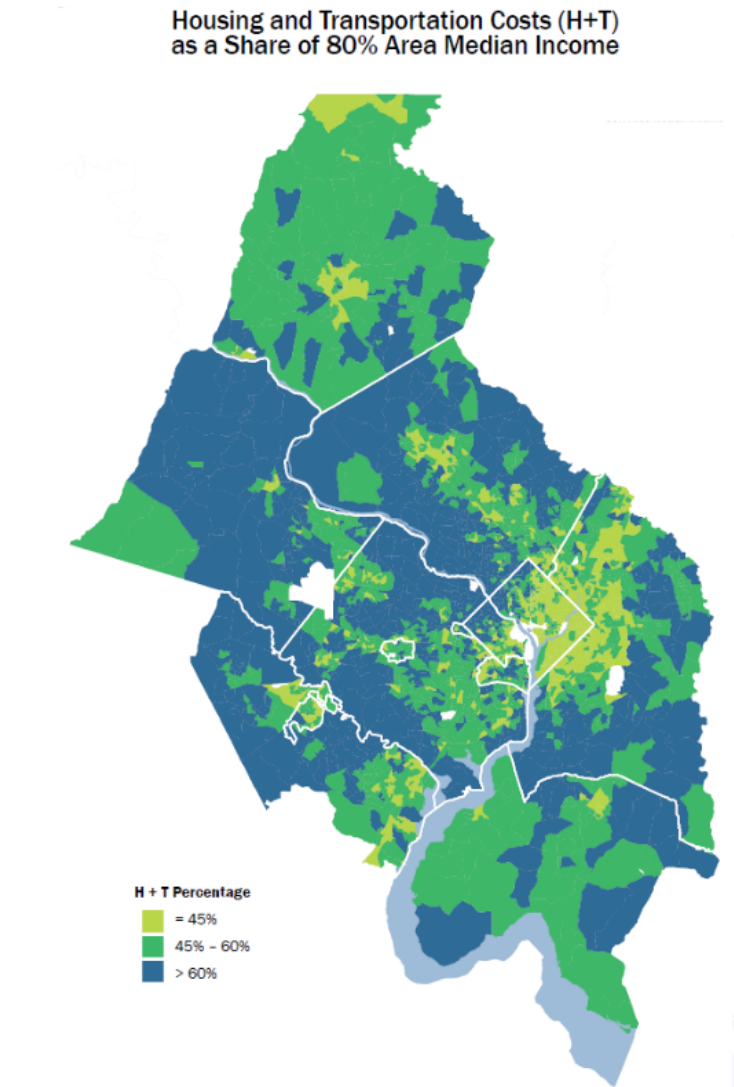


Key to sustaining  
an **economic edge**  
in today's global  
marketplace.



Infrastructure investment gap of at least **\$58 billion** over the next 15 years just to keep pace with a projected 33% increase in population.

Housing and transportation costs comprise **42%** of household income in the region.





# HUMAN INFRASTRUCTURE

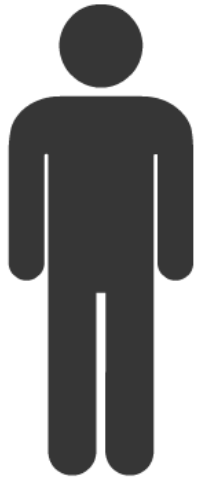


49% of the population over 25 have a Bachelor's degree or higher; 24% have a professional or advanced degree.



Advanced industries growing in significance, making up **27%** of non-governmental jobs.





Workforce participation  
at **73.3%** - national rate  
is 64.3%

Prosperity and advancement opportunities are not realized **equally** by all residents.





# QUALITY OF LIFE

# One of our best economic assets.



75

MUSEUMS  
TO VISIT

19

SMITHSONIAN  
MUSEUMS &  
GALLERIES

137M

WORKS OF  
ARTS AT THE  
SMITHSONIAN



NATIONAL ZOO

2,000 ANIMALS

400 SPECIES

100 ENDANGERED



40

PERFORMING  
ARTS VENUES

2 OF THE  
TOP 3

MOST VISITED  
MUSEUMS  
IN THE WORLD



THE NATIONAL  
MUSEUM OF  
NATURAL HISTORY

7.6M VISITOR  
PER YEAR

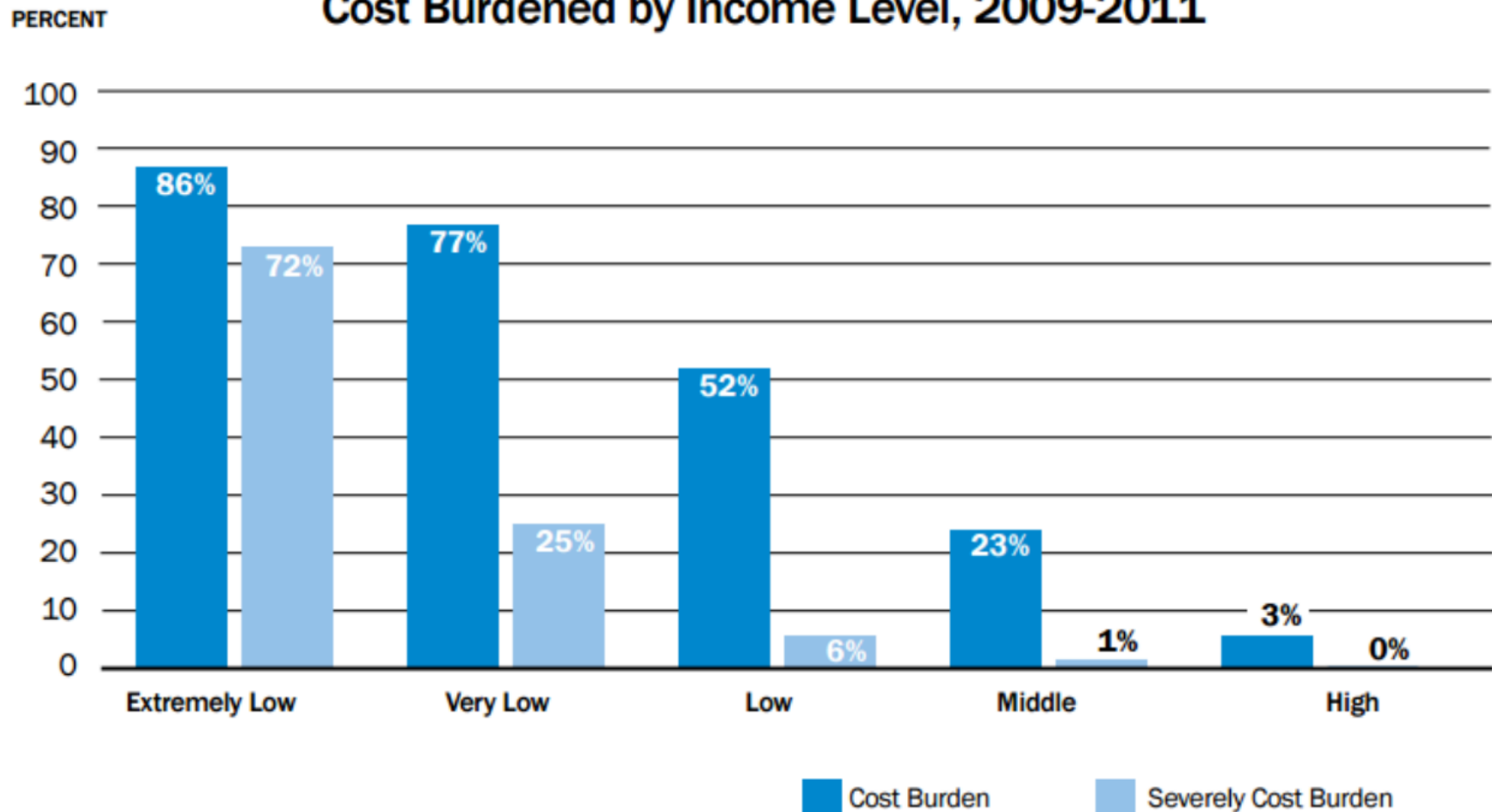


THE NATIONAL  
MUSEUM OF  
AIR & SPACE

6.8M VISITOR  
PER YEAR

Housing affordability and concentrated poverty have the ability to **undercut** these advantages.

**Percent of Region's Renter Households That are Cost Burdened by Income Level, 2009-2011**



## **Regional Action Agenda to Enhance Competitiveness**

- Regional export promotions strategy
- Joint trade missions and other collaborative opportunities
- Workforce
- GSA and the Federal Laboratory Consortium for technology transfer

**We're getting  
started right away.**



# GLOBAL CITIES INITIATIVE



A project of Brookings and JP Morgan Chase

- Leverage global assets
- Actionable ideas for expanding global reach
- Strengthening international network/relationships



We'll submit the application **this Friday**, January 15.



Metropolitan Washington  
**Council of Governments**



GREATER WASHINGTON  
Board of Trade



Consortium of Universities of the  
Washington Metropolitan Area

**Recommended Action:**  
**Accept Report,**  
**Resolution R5-2016**





# STATE OF THE REGION

Economic Competitiveness Report

# 2016

