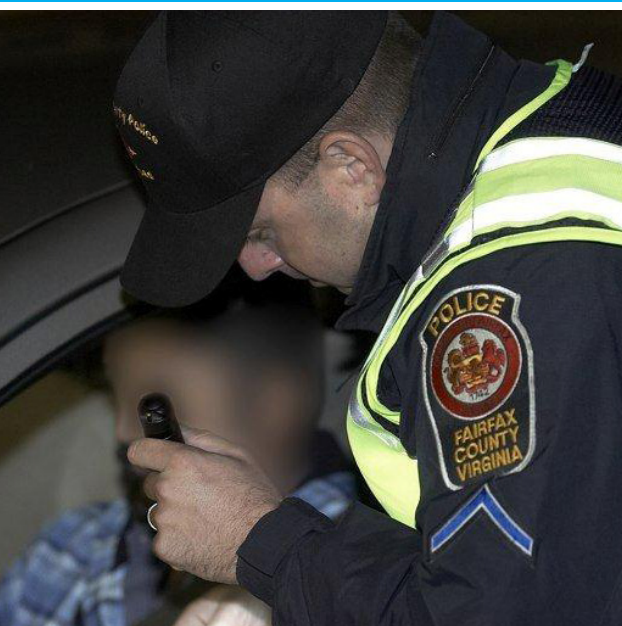




2011 Annual Report on Crime & Crime Control



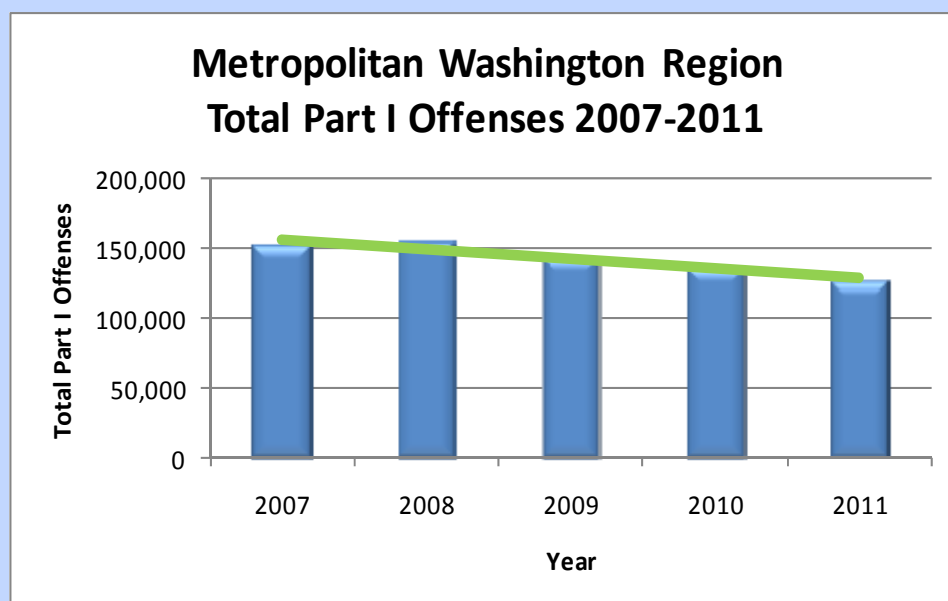
Metropolitan Washington Council of Governments



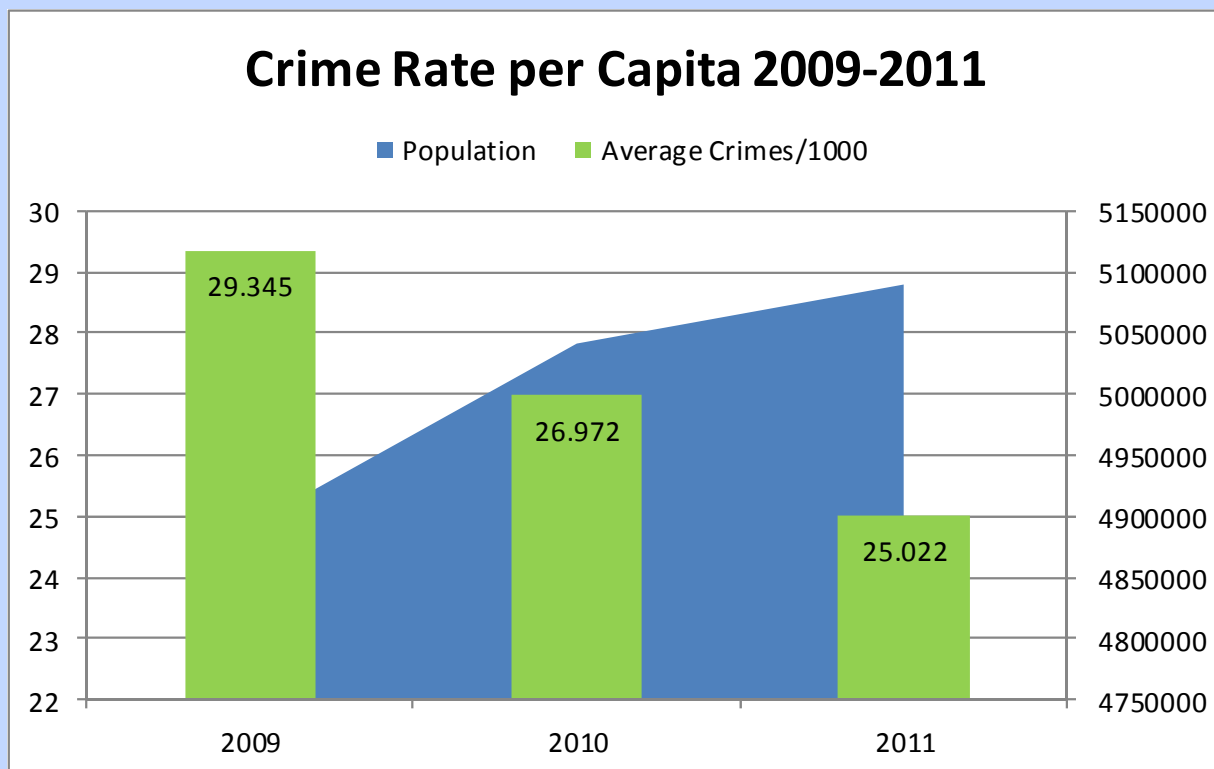
Overview: 2011

The Metropolitan Washington Council of Governments' (MWCOC) annual crime report is based on crime incidents reported by participating agencies in the metropolitan region. The 2011 Annual Report on Crime and Crime Control focuses on Part I offenses as defined by the Federal Bureau of Investigation. This includes crimes against the person: homicide, rape, robbery, and aggravated assault, and crimes against property: burglary, larceny, and motor vehicle theft. In 2011, the metropolitan Washington region experienced another decline in Part I crime, recording 127,349 offenses versus 135,974 offenses in 2010 (-6.3%).

In 2011, all Part I categories experienced a decline. Crimes against the person were down 9.7% overall (15,845 vs. 17,550), fueled by a 13.4% decrease in homicides and an 10.9% decrease in aggravated assaults. There was an overall 5.8% reduction in crimes against property, as a result of a 10.5% and 10.3% decline in motor vehicle thefts and burglaries, respectively.



Metropolitan Washington continues to report favorable five-year trends in overall Part I offenses. Since 2007, the region has witnessed an overall 16.5% decline in Part I crime, driven primarily by significant reductions in motor vehicle theft (-45.6%), homicide (-38.1%), aggravated assault (-23.8%), and robbery (-20.4%). Furthermore, despite a slight population increase and a rise in calls for service, the crime rate per capita decreased from 26.972 crimes per 1000 people to 25.022 crimes.

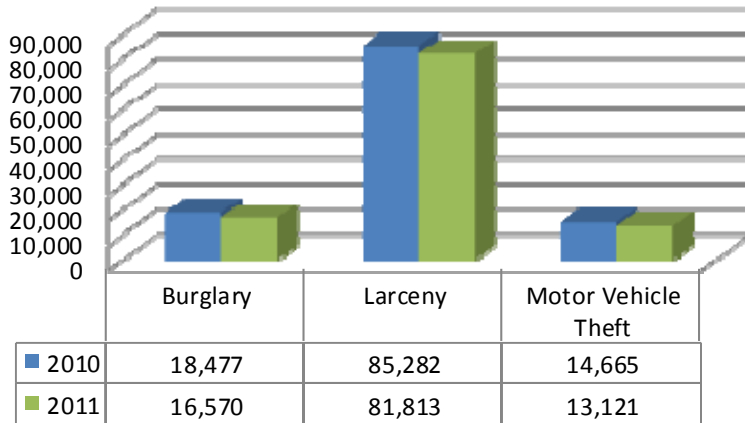


While the crime rate is commonly accepted as a basic indicator of overall crime trends, crime statistics must be viewed in context with environmental influences. Factors such as changes in reporting rates, demographics, the economy, legislation, and changes in police policies and resources can all have an influence on the number of crimes reported.

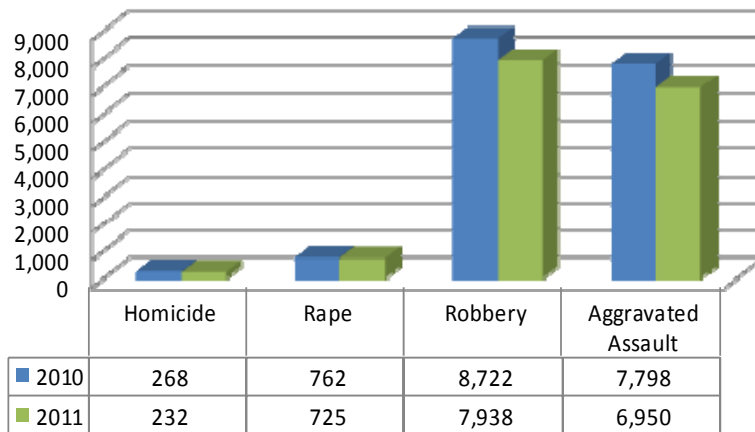
Crime Trends

While the region's current year and five-year trends are positive and encouraging, law enforcement and elected officials should be mindful of the increasing population in metropolitan Washington and the challenges that will present. Currently, over 5 million people live in the Washington metropolitan area and a significant tourist population is not accounted for in this data. Officers responded to over 3.3 million calls for service in 2011 and made nearly 25,000 arrests. This could not be accomplished without the ever-increasing cooperation and coordination between the local, state, and federal agencies, as well as collaboration with the community and other organizations, including the court system, nonprofits, and the military.

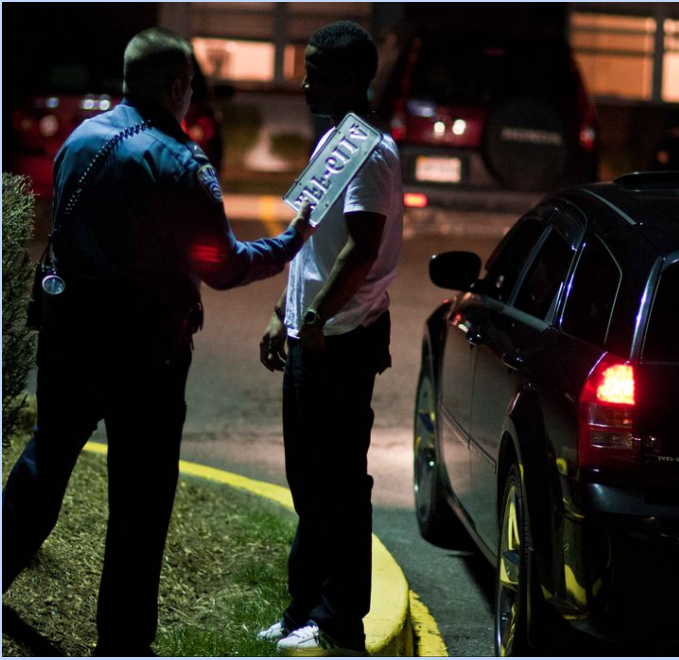
Property Crime 2010 v. 2011



Violent Crime 2010 v. 2011



In a region where crime occurs irrespective of boundaries and is increasingly multi-jurisdictional, a major factor in the reduction of crime has been the cooperation between law enforcement agencies. Local, state, and federal agencies have continued to share information through the National Capital Region Law Enforcement Information Exchange (NCR LInX), regional databases, and distribution lists. Through these information shar-



ing networks, law enforcement has been able to identify suspects and solve cases throughout the metropolitan area. For example, law enforcement officers in Northern Virginia were able to link ballistic evidence from shootings at the Pentagon, the National Museum of the Marine Corps, and two other federal buildings to the same weapon. The suspect was later apprehended after triggering a terror scare at Arlington National Cemetery and the Pentagon, resulting in a combined apprehension effort by local and federal law enforcement.

Across the region, in an effort to safeguard its nearly 1.2 million riders, the Metro Transit Police Department has engaged many of the local police departments in several proactive, collaborative efforts. Both Operation Rail Safe and Blue TIDE create a high visibility presence of law enforcement personnel on the transit system for the purpose of detecting, deterring, and disrupting possible terrorist

and criminal activity. The operations also create a safe transit environment for commuters.

Partnerships with other agencies are yet another way that police departments work to proactively increase public safety. In 2011, a partnership between the DC Metropolitan Police Department, the Court Services and Offender Supervision Agency, and the DC Superior Court, among others, took nearly 800 individuals with outstanding bench warrants off the street, reducing risk in the local community and allowing police to focus on more violent offenders.

Crime prevention through educational initiatives continues to be a major influence in the reduction of crime in the metropolitan area. Many departments continue to support the See Something, Say Something campaign. This campaign is designed to influence people, through audible recordings and highly visible posters and message boards to report suspicious or questionable activity to local officials. The program encourages vigilance and makes crime prevention everyone's responsibility.

Policing in an Urban Environment:

In 2011, Montgomery County Police Department converted to an urban policing model in their central business districts. This model varies patrol methods with officers in cars, bicycles, and on foot patrol. This model has resulted in a reduction in the violent crime rate and will be expanded to all central business districts within the County.

Although this data represents good news and a certain amount of success, law enforcement officials and elected leaders should be cautious about celebrating the reductions that have occurred. With the upcoming Presidential election, the expansion of Metro in Virginia, and ongoing reductions in state and federal funding, law enforcement agencies must continue to think creatively and strategically and employ intelligence-led policing solutions. Law enforcement strives to be proactive, rather than reactive. The goal is to arm officers with information that enables them to know in advance the situations they are entering, to quickly resolve crimes, and to make timely decisions based on real-time information. This will allow law enforcement to continue improving community relations by providing more transparency and flow of information, while also ensuring security and safety.

Street Smart Campaign:

Street Smart is a public education campaign in the Washington, DC, Suburban Maryland, and Northern Virginia area aimed at building safer streets and sidewalks, enforcing laws, and training better drivers, cyclists, and pedestrians. During Street Smart, law enforcement puts an added emphasis on enforcing existing laws regarding roadway safety. In the fall 2010 and spring 2011 campaigns, participating agencies issued 4,220 citations and 3,785 warnings to motorists, pedestrians and cyclists. For more information, please visit <http://www.beststreetsmart.net>



Calls for Service & Authorized Strength

COG DEPARTMENT	CALLS	SWORN	CIVILIAN
D.C. Metropolitan Police	597,614	3,814	488
Bladensburg Police Department	13,431	19	6
Bowie Police Department	22,956	45	9
Frederick County Sheriff's Office	98,876	172	64
Frederick Police Department	78,468	138	39
Greenbelt Police Department	29,024	54	15
Montgomery County Dept. of Police	260,774	1,143	408
Gaithersburg Police Department	31,156	54	14
Rockville City Police Department	34,510	57	33
Prince George's County Police Dept.	973,819	1,786	501
Takoma Park Police Department	21,495	43	24
Alexandria Police Department	50,489	307	106
Arlington County Police Department	115,982	358	100
City of Fairfax Police Department	13,896	66	17
Fairfax County Police Department	474,513	1,328	326
Falls Church City Police Department	27,483	32	10
Loudoun County Sheriff's Office	201,349	549	113
City of Manassas Police Department	53,431	95	26
Manassas Park Police Department	22,229	32	12
Prince William County Police Dept.	231,557	569	182
SUBTOTAL	3,353,052	10,661	2,493
ASSOCIATE DEPARTMENTS			
Fauquier County Sheriff's Office	63,395	110	17
FBI Police	1,182	233	0
Federal Protective Service	70,610	146	24
MNCPPC Police (Montgomery County)	82,333	92	21
MNCPPC Police (Prince George's County)	91,644	107	25
Maryland State Police	34,695	97	15
Metro Transit Police	63,712	434	201
Metro. Wash. Airports Authority Police	67,220	222	97
National Institutes of Health Police	21,002	90	12
Naval Criminal Investigative Service	N/A	22	N/A
Pentagon Force Protection Agency	6,447	817	26
U.S. Capitol Police	71,048	1,775	370
U.S. Park Police	67,687	657	109
Virginia State Police (Div. 7)	168,906	267	49
SUBTOTAL	809,881	5,069	966
GRAND TOTAL	4,162,933	15,730	3,459



Part I Crime Offenses: 2011

COG DEPARTMENTS	REPORTING METHOD	HOMICIDE	RAPE	ROBBERY	AGG ASSAULT	BURGLARY	LARCENY	M/V THEFTS	TOTAL OFFENSES	CRIMES PER 1000	POPULATION
D.C. Metropolitan Police	UCR	108	172	3756	2,949	3,849	20,124	4,339	35,297	57.115	617,996
Bladensburg Police Department	UCR	2	4	40	51	100	234	110	541	59.139	9,148
Bowie Police Department	UCR	0	3	44	32	186	589	60	914	16.618	55,000
Frederick County Sheriff's Office	UCR	1	9	18	187	317	1,194	92	1,818	7.790	233,385
Frederick Police Department	UCR	2	19	96	194	235	1,474	78	2,098	32.159	65,239
Greenbelt Police Department	UCR	0	5	90	35	254	449	114	947	45.305	20,903
Montgomery County Dept. of Police	UCR	16	112	840	648	3,061	13,505	1,185	19,367	20.278	955,062
Gaithersburg Police Department*	UCR	2	12	54	57	193	1,367	74	1,759	29.089	60,469
Rockville City Police Department*	UCR	1	7	53	39	260	988	76	1,424	22.968	62,000
Prince George's County Police Dept.	UCR	81	152	2,048	1,795	5,499	14,977	4,980	29,532	34.204	863,420
Takoma Park Police Department	UCR	1	3	32	26	109	317	77	565	33.802	16,715
Alexandria Police Department	NIBRS	1	21	130	112	308	2,666	374	3,612	25.800	140,000
Arlington County Police Department	NIBRS	0	23	135	143	251	3,439	178	4,169	19.824	210,300
City of Fairfax Police Department	NIBRS	0	4	12	16	38	515	13	598	26.501	22,565
Fairfax County Police Department	NIBRS	11	72	423	392	1,021	13,409	881	16,209	14.994	1,081,004
Falls Church City Police Department	NIBRS	0	0	5	5	4	196	14	224	18.211	12,300
Loudoun County Sheriff's Office	NIBRS	1	52	41	132	286	2,450	154	3,116	9.588	325,000
City of Manassas Police Department	NIBRS	4	22	51	46	123	680	69	995	26.308	37,821
Manassas Park Police Department	NIBRS	0	6	4	7	14	155	14	200	14.012	14,273
Prince William County Police Dept.	UCR	4	46	173	180	915	5,440	389	7,147	17.460	409,345
SUBTOTAL		232	725	7,938	6,950	16,570	81,813	13,121	127,349	25.022	5,089,476
ASSOCIATE DEPARTMENTS	REPORTING METHOD	HOMICIDE	RAPE	ROBBERY	AGG ASSAULT	BURGLARY	LARCENY	M/V THEFTS	TOTAL OFFENSES		
Fauquier County Sheriff's Office	NIBRS	1	10	7	19	112	526	26	701		
FBI Police	OTHER	0	0	0	0	0	2	0	2		
Federal Protective Service	OTHER	1	0	1	6	4	553	1	566		
MNCPCC Police (Montgomery County)	UCR	0	0	6	3	19	154	4	186		
MNCPCC Police (Prince George's County)	UCR	3	4	36	37	17	166	7	270		
Maryland State Police**	UCR	0	0	0	10	1	30	67	108		
Metro Transit Police	NIBRS	0	1	871	108	1	791	126	1,898		
Metro. Wash. Airports Authority Police	NIBRS	0	0	0	0	0	276	53	329		
National Institutes of Health Police	UCR	0	0	0	2	1	87	1	91		
Naval Criminal Investigative Services	OTHER	1	33	1	10	0	25	0	70		
Pentagon Force Protection Agency	OTHER	0	0	0	0	0	76	0	76		
U.S. Capitol Police	OTHER	0	0	60	11	17	31	64	183		
U.S. Park Police	UCR	0	17	45	135	20	126	18	361		
Virginia State Police (Div. 7)	NIBRS	0	1	0	16	0	29	12	58		
SUBTOTAL		6	66	1,027	357	192	2,872	379	4,899		
GRAND TOTAL		238	791	8,965	7,307	16,762	84,685	13,500	132,248		

Footnotes

* Montgomery County also reports the data from the cities of Gaithersburg and Rockville.

** This includes figures from the College Park, Rockville, & Forestville Barracks.

Part I Crime Arrests: 2011

COG DEPARTMENTS	REPORTING METHOD	HOMICIDE	RAPE	ROBBERY	AGG ASSAULT	BURGLARY	LARCENY	M/V THEFTS	TOTAL ARRESTS
D.C. Metropolitan Police	UCR	117	131	1,041	1,571	382	1,428	654	5,324
Bladensburg Police Department	UCR	1	3	2	33	15	30	9	93
Bowie Police Department	UCR	0	0	10	25	28	157	0	220
Frederick County Sheriff's Office	UCR	0	1	3	75	92	259	58	488
Frederick Police Department	UCR	1	3	52	84	53	346	10	549
Greenbelt Police Department	UCR	0	2	17	9	31	86	20	165
Montgomery County Dept. of Police	UCR	15	21	281	329	614	2,093	171	3,524
<i>Gaithersburg Police Department*</i>	UCR	2	2	14	28	20	403	12	481
<i>Rockville City Police Department*</i>	UCR	0	0	15	21	22	99	9	166
Prince George's County Police Dept.	UCR	58	29	522	740	529	2,024	177	4,079
Takoma Park Police Department	UCR	0	2	6	19	17	35	7	86
Alexandria Police Department	NIBRS	1	10	83	60	46	413	22	635
Arlington County Police Department	NIBRS	2	7	49	71	34	684	28	875
City of Fairfax Police Department	NIBRS	1	4	0	15	13	114	1	148
Fairfax County Police Department	NIBRS	22	22	259	334	321	4,080	199	5,237
Falls Church City Police Department	NIBRS	0	0	9	2	14	128	14	167
Loudoun County Sheriff's Office	NIBRS	1	12	39	90	90	638	49	919
City of Manassas Police Department	NIBRS	2	9	21	48	45	119	0	244
Manassas Park Police Department	NIBRS	0	1	0	7	2	18	3	31
Prince William County Police Dept.	UCR	5	38	103	161	192	1,382	55	1,936
SUBTOTAL		226	295	2,497	3,673	2,518	14,034	1,477	24,720
ASSOCIATE DEPARTMENTS	REPORTING METHOD	HOMICIDE	RAPE	ROBBERY	AGG ASSAULT	BURGLARY	LARCENY	M/V THEFTS	TOTAL ARRESTS
Fauquier County Sheriff's Office	NIBRS	0	0	1	10	14	60	0	85
FBI Police	OTHER	0	0	0	0	0	4	0	4
Federal Protective Service	OTHER	0	0	0	2	0	6	0	8
MNCPPC Police (Montgomery County)	UCR	0	0	0	2	5	26	0	33
MNCPPC Police (Prince George's County)	UCR	1	0	7	13	1	19	0	41
Maryland State Police**	UCR	0	0	0	4	0	10	5	19
Metro Transit Police	NIBRS	0	1	255	53	0	62	40	411
Metro. Wash. Airports Authority Police	NIBRS	0	0	0	0	0	23	16	39
National Institutes of Health Police	UCR	0	0	0	0	0	2	1	3
Naval Criminal Investigative Service	OTHER	1	20	0	8	0	16	0	45
Pentagon Force Protection Agency	OTHER	0	0	0	0	0	1	0	1
U.S. Capitol Police	OTHER	0	0	0	1	0	12	0	13
U.S. Park Police	UCR	0	7	9	55	3	16	1	91
Virginia State Police (Div. 7)	NIBRS	1	0	0	4	0	5	5	15
SUBTOTAL		3	28	272	152	23	262	68	808
GRAND TOTAL		229	323	2,769	3,825	2,541	14,296	1,545	25,528



Part I Crime by Department: 2011

Washington, DC

DISTRICT OF COLUMBIA-MPD				
	2011	2010	INC/DEC	%
HOMICIDE	108	132	-24	-18%
RAPE	172	184	-12	-7%
ROBBERY	3,756	3,914	-158	-4%
AGG ASSAULT	2,949	3,238	-289	-9%
BURGLARY	3,849	4,224	-375	-9%
LARCENY	20,124	18,050	2,074	11%
M/V THEFTS	4,339	4,864	-525	-11%
Total Part I	35,297	34,606	691	2%

Maryland

BLADENSBURG P.D.				
	2011	2010	INC/DEC	%
HOMICIDE	2	1	1	100%
RAPE	4	1	3	300%
ROBBERY	40	38	2	5%
AGG ASSAULT	51	87	-36	-41%
BURGLARY	100	123	-23	-19%
LARCENY	234	279	-45	-16%
M/V THEFTS	110	113	-3	-3%
Total Part I	541	642	-101	-16%

BOWIE P.D.				
	2011	2010	INC/DEC	%
HOMICIDE	0	2	-2	0%
RAPE	3	2	1	50%
ROBBERY	44	57	-13	-23%
AGG ASSAULT	32	45	-13	-29%
BURGLARY	186	212	-26	-12%
LARCENY	589	716	-127	-18%
M/V THEFTS	60	116	-56	-48%
Total Part I	914	1,150	-236	-21%

FREDERICK CO. SHERIFF				
	2011	2010	INC/DEC	%
HOMICIDE	1	2	-1	-50%
RAPE	9	15	-6	-40%
ROBBERY	18	28	-10	-36%
AGG ASSAULT	187	162	25	15%
BURGLARY	317	271	46	17%
LARCENY	1,194	1,224	-30	-2%
M/V THEFTS	92	66	26	39%
Total Part I	1,818	1,768	50	3%

FREDERICK P.D.				
	2011	2010	INC/DEC	%
HOMICIDE	2	2	0	0%
RAPE	19	16	3	19%
ROBBERY	96	162	-66	-41%
AGG ASSAULT	194	274	-80	-29%
BURGLARY	235	262	-27	-10%
LARCENY	1,474	1,363	111	8%
M/V THEFTS	78	87	-9	-10%
Total Part I	2,098	2,166	-68	-3%

GAITHERSBURG P.D.				
	2011	2010	INC/DEC	%
HOMICIDE	2	1	1	100%
RAPE	12	11	1	9%
ROBBERY	54	64	-10	-16%
AGG ASSAULT	57	73	-16	-22%
BURGLARY	193	203	-10	-5%
LARCENY	1,367	1,533	-166	-11%
M/V THEFTS	74	86	-12	-14%
Total Part I	1,759	1,971	-212	-11%

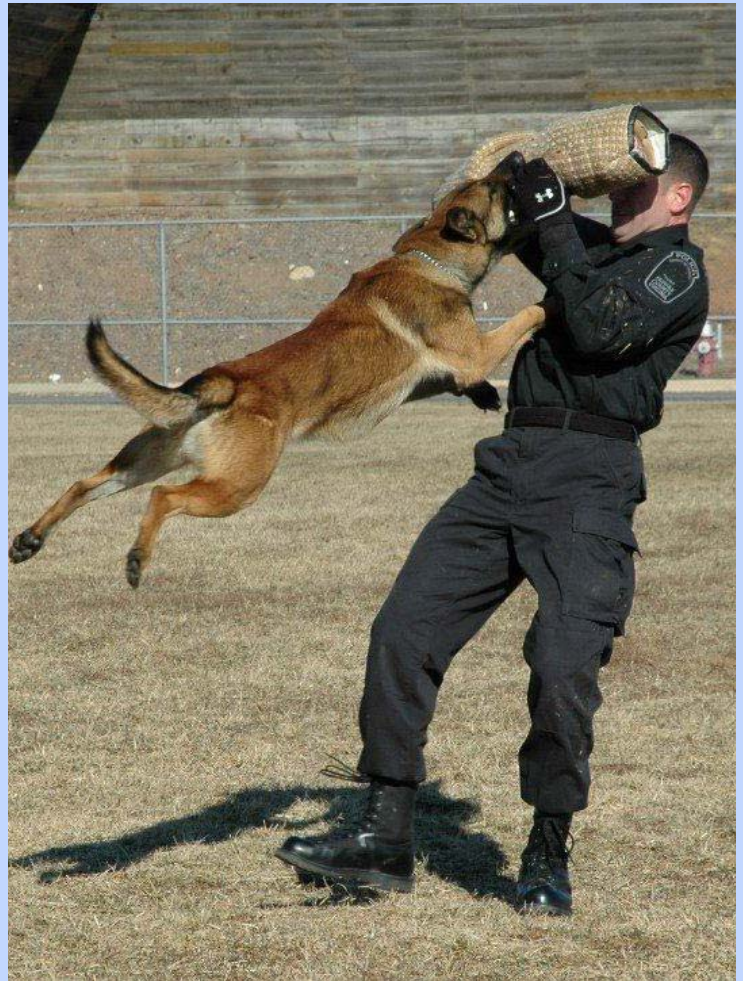
GREENBELT P.D.				
	2011	2010	INC/DEC	%
HOMICIDE	0	2	-2	-100%
RAPE	5	11	-6	-55%
ROBBERY	90	106	-16	-15%
AGG ASSAULT	35	66	-31	-47%
BURGLARY	254	221	33	15%
LARCENY	449	761	-312	-41%
M/V THEFTS	114	133	-19	-14%
Total Part I	947	1,300	-353	-27%

MONTGOMERY COUNTY P. D.				
	2011	2010	INC/DEC	%
HOMICIDE	16	17	-1	-6%
RAPE	112	119	-7	-6%
ROBBERY	840	911	-71	-8%
AGG ASSAULT	648	553	95	17%
BURGLARY	3,061	3,323	-262	-8%
LARCENY	13,505	15,261	-1,756	-12%
M/V THEFTS	1,185	1,455	-270	-19%
Total Part I	19,367	21,639	-2,272	-10%

PRINCE GEORGE'S COUNTY P. D.				
	2011	2010	INC/DEC	%
HOMICIDE	81	82	-1	-1%
RAPE	152	169	-17	-10%
ROBBERY	2,048	2,462	-414	-17%
AGG ASSAULT	1,795	2,219	-424	-19%
BURGLARY	5,499	6,399	-900	-14%
LARCENY	14,977	16,234	-1,257	-8%
M/V THEFTS	4,980	5,597	-617	-11%
Total Part I	29,532	33,162	-3,630	-11%

ROCKVILLE CITY P. D.				
	2011	2010	INC/DEC	%
HOMICIDE	1	0	1	100%
RAPE	7	10	-3	-30%
ROBBERY	53	69	-16	-23%
AGG ASSAULT	39	41	-2	-5%
BURGLARY	260	239	21	9%
LARCENY	988	1,082	-94	-9%
M/V THEFTS	76	66	10	15%
Total Part I	1,424	1,507	-83	-6%

TAKOMA PARK P. D.				
	2011	2010	INC/DEC	%
HOMICIDE	1	0	1	100%
RAPE	3	2	1	50%
ROBBERY	32	48	-16	-33%
AGG ASSAULT	26	26	0	0%
BURGLARY	109	150	-41	-27%
LARCENY	317	364	-47	-13%
M/V THEFTS	77	63	14	22%
Total Part I	565	653	-88	-13%



Targeting Burglaries:

During 2011, the Takoma Park Police Department focused efforts on reducing the number of burglaries in their jurisdiction. The Department was successful by targeting hotspot areas with saturation patrols, as well as using plainclothes tactical enforcement officers to conduct surveillance on known serial burglars.

Part I Crime by Department: 2011

Virginia

ALEXANDRIA P.D.				
	2011	2010	INC/DEC	%
HOMICIDE	1	3	-2	-67%
RAPE	21	20	1	5%
ROBBERY	130	125	5	4%
AGG ASSAULT	112	125	-13	-10%
BURGLARY	308	310	-2	-1%
LARCENY	2,666	2,805	-139	-5%
M/V THEFTS	374	282	92	33%
Total Part I	3,612	3,670	-58	-2%

CITY OF FAIRFAX P.D.				
	2011	2010	INC/DEC	%
HOMICIDE	0	0	0	0%
RAPE	4	3	1	33%
ROBBERY	12	10	2	20%
AGG ASSAULT	16	13	3	23%
BURGLARY	38	26	12	46%
LARCENY	515	507	8	2%
M/V THEFTS	13	30	-17	-57%
Total Part I	598	589	9	2%

ARLINGTON COUNTY P.D.				
	2011	2010	INC/DEC	%
HOMICIDE	0	1	-1	-100%
RAPE	23	24	-1	-4%
ROBBERY	135	143	-8	-6%
AGG ASSAULT	143	142	1	1%
BURGLARY	251	307	-56	-18%
LARCENY	3,439	3,942	-503	-13%
M/V THEFTS	178	211	-33	-16%
Total Part I	4,169	4,770	-601	-13%

FAIRFAX COUNTY P.D.				
	2011	2010	INC/DEC	%
HOMICIDE	11	16	-5	-31%
RAPE	72	74	-2	-3%
ROBBERY	423	394	29	7%
AGG ASSAULT	392	450	-58	-13%
BURGLARY	1,021	1,211	-190	-16%
LARCENY	13,409	14,345	-936	-7%
M/V THEFTS	881	963	-82	-9%
Total Part I	16,209	17,453	-1,244	-7%

FALLS CHURCH CITY P.D.				
	2011	2010	INC/DEC	%
HOMICIDE	0	0	0	0%
RAPE	0	1	-1	-100%
ROBBERY	5	6	-1	-17%
AGG ASSAULT	5	6	-1	-17%
BURGLARY	4	11	-7	-64%
LARCENY	196	268	-72	-27%
M/V THEFTS	14	21	-7	-33%
Total Part I	224	313	-89	-28%

LOUDOUN COUNTY SHERIFF				
	2011	2010	INC/DEC	%
HOMICIDE	1	1	0	0%
RAPE	52	46	6	13%
ROBBERY	41	39	2	5%
AGG ASSAULT	132	114	18	16%
BURGLARY	286	319	-33	-10%
LARCENY	2,450	2,442	8	0%
M/V THEFTS	154	145	9	6%
Total Part I	3,116	3,106	10	0%

Homicide Free:

Through effective policing, excellent medical care, successful prosecution and cooperating communities, several jurisdictions remained homicide free for consecutive years.

PRINCE WILLIAM COUNTY P.D.				
	2011	2010	INC/DEC	%
HOMICIDE	4	8	-4	-50%
RAPE	46	53	-7	-13%
ROBBERY	173	221	-48	-22%
AGG ASSAULT	180	224	-44	-20%
BURGLARY	915	971	-56	-6%
LARCENY	5,440	5,752	-312	-5%
M/V THEFTS	389	428	-39	-9%
Total Part I	7,147	7,657	-510	-7%

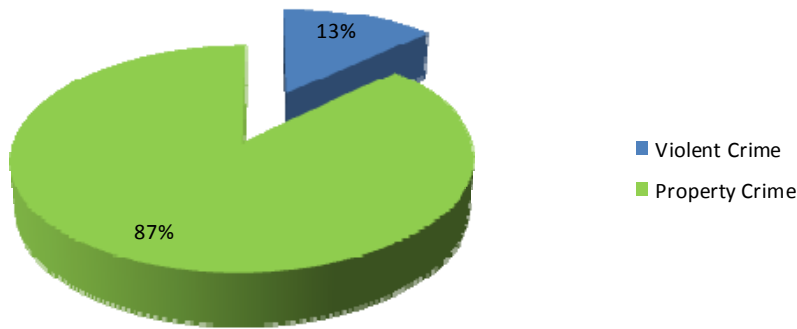
CITY OF MANASSAS P.D.				
	2011	2010	INC/DEC	%
HOMICIDE	4	1	3	300%
RAPE	22	16	6	38%
ROBBERY	51	51	0	0%
AGG ASSAULT	46	50	-4	-8%
BURGLARY	123	122	1	1%
LARCENY	680	785	-105	-13%
M/V THEFTS	69	77	-8	-10%
Total Part I	995	1,102	-107	-10%

MANASSAS PARK P.D.				
	2011	2010	INC/DEC	%
HOMICIDE	0	0	0	0%
RAPE	6	7	-1	-14%
ROBBERY	4	7	-3	-43%
AGG ASSAULT	7	4	3	75%
BURGLARY	14	15	-1	-7%
LARCENY	155	184	-29	-16%
M/V THEFTS	14	14	0	0%
Total Part I	200	231	-31	-13%



Recommendations

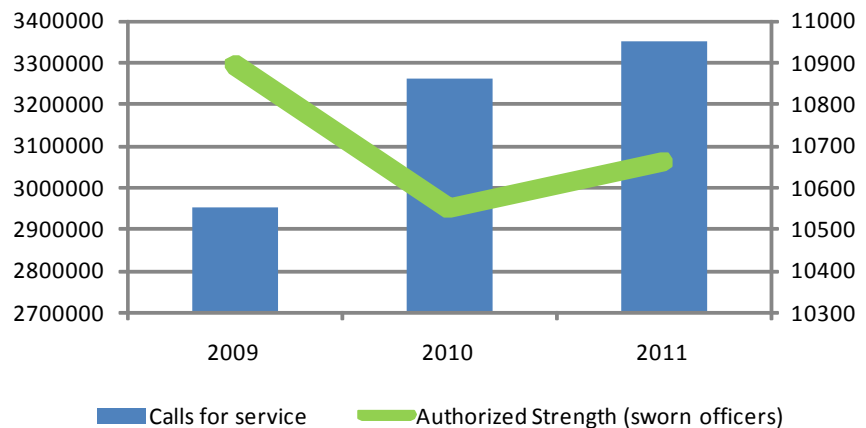
2011 Violent Crime v. Property Crime
(Total Part I Offenses = 127,349)



Law enforcement agencies must continue to look forward and plan for the future. The challenges and expectations regarding the way police perform their duties and the circumstances under which police work is done have become more demanding. The economic down-

turn has left departments with fewer resources than they had five years ago. Technological advancements will continue to increase social vulnerability and provide criminals with new methods and opportunities; law enforcement will continue to use technology to stop them, but will be limited by funding, legislation, and policies. It is critical that departments continue to engage their communities in prevention and awareness, while balancing resources to respond to and investigate incidents that do occur. This can be accomplished through intelligence-led policing solutions, which will provide law enforcement with an operational strategy built around timely and accurate data collection, mapping techniques, and analysis of data to identify the nexus of crime and traffic safety, thereby reducing social harm and improving the quality of life within local communities.

Calls for Service & Sworn Officers



How You Can Help

For Elected Officials

- Continue working together to develop effective crime policy and legislation from a multifaceted, multijurisdictional, evidence-led approach.
- Effective crime policy should include the local citizens, academics, courts, doctors, teachers, and other practitioners, such as probation and parole officers, mental health and social workers, and law enforcement.
- Focus resources on those policies and practices that have the greatest return on investment and proven record of success, based on empirical evidence generated from sound research.

For Residents

- Beware of scams that ask for your personal information, such as your social security number, account numbers, or PIN. If a deal sounds too good to be true, it probably is.
- Make your vehicle unattractive to criminals: park in well-lit areas. Lock the doors at ALL times. Never leave keys in your vehicle and do not leave your vehicle running unattended. Take the extra time to physically remove your valuables (GPS, CDs, radio, purse/briefcase, etc.). Clean the GPS suction cup circle off your window.
- Make your home unattractive to criminals: never leave keys under doormats, flowerpots, or other “secret” hiding places.
- Keep your garage door closed and locked. Make it look occupied if you are going to be away. Keep a detailed inventory of your valuable possessions, including serial numbers, description, and original value. Mark electronics and other valuables with identifying information, which makes it harder for criminals to dispose of the goods and easier for police to recover.
- Encourage the formation of Neighborhood Watch programs or patrols. Participate and stay informed of what’s happening in your community.
- Maintain awareness of your surroundings when out in public, especially while using your smart phones and other electronics.
- Teach your children about “stranger danger.”
- If you see something, say something. Report any and all suspicious activity.



COG Police Chiefs Committee

BUREAU OF ALCOHOL, TOBACCO, FIREARMS AND EXPLOSIVES (ATF) WASHINGTON FIELD DIVISION Willie Brownlee, Acting Special Agent in Charge	FEDERAL BUREAU OF INVESTIGATIONS, WASHINGTON FIELD OFFICE James McJunkin, Assistant Director in Charge	MARYLAND NATIONAL CAPITAL PARK POLICE Prince George's County Division Chief Larry Brownlee	ROCKVILLE CITY POLICE DEPARTMENT Chief Terrance N. Treschuk
CITY of ALEXANDRIA POLICE DEPARTMENT Chief Earl L. Cook	FEDERAL BUREAU OF INVESTIGATIONS, POLICE UNIT Chief Derek A. Fuller	MARYLAND STATE POLICE DEPARTMENT Colonel Marcus L. Brown Superintendent	TAKOMA PARK POLICE DEPARTMENT Chief Ronald A. Ricucci
ARLINGTON COUNTY POLICE DEPARTMENT Chief M. Douglas Scott	FEDERAL PROTECTIVE SERVICE NATIONAL CAPITAL REGION David E. Holmes Acting Regional Director	METRO TRANSIT POLICE DEPARTMENT Chief Michael Taborn	U.S. CAPITOL POLICE Acting Chief Thomas P. Reynolds.
BLADENSBURG POLICE DEPARTMENT Chief Charles L. Owens	FREDERICK POLICE DEPARTMENT Chief Kim C. Dine	METROPOLITAN POLICE DEPARTMENT WASHINGTON DC Chief Cathy Lanier	ICE HOMELAND SECURITY INVESTIGATIONS BALTIMORE FIELD OFFICE William Winter, Special Agent in Charge
CIA- SECURITY PROTECTIVE SERVICE Chief Paul Dewey	FREDERICK COUNTY SHERIFF'S OFFICE Sheriff Charles A. Jenkins	METROPOLITAN WASHINGTON AIRPORTS AUTHORITY POLICE Chief Stephen L. Holl	ICE HOMELAND SECURITY INVESTIGATIONS WASHINGTON FIELD OFFICE John Torres, Special Agent in Charge
DEFENSE INTELLIGENCE AGENCY POLICE Chief Drew Stathis	GAITHERSBURG POLICE DEPARTMENT Chief Mark P. Sroka	MILITARY DISTRICT OF WASHINGTON Colonel Steven M. Lynch Provost Marshal	U.S. PARK POLICE Chief Teresa C. Chambers
DRUG ENFORCEMENT ADMINISTRATION, WASHINGTON FIELD OFFICE Ava Cooper-Davis, Special Agent in Charge	GREENBELT POLICE DEPARTMENT Chief James R. Craze	MONTGOMERY COUNTY DEPARTMENT OF POLICE Chief J. Thomas Manger	U.S. SECRET SERVICE UNIFORMED DIVISION Chief Kevin Simpson
CITY OF BOWIE POLICE DEPARTMENT Chief John Nesky	LOUDOUN COUNTY SHERIFF'S OFFICE Sheriff Michael L. Chapman	NATIONAL INSTITUTES OF HEALTH POLICE Chief Alvin D. Hinton	U.S. SECRET SERVICE WASHINGTON FIELD OFFICE David Beach, Special Agent in Charge
CITY of FAIRFAX POLICE DEPARTMENT Chief Richard Rappoport	CITY OF MANASSAS POLICE DEPARTMENT Chief Douglas W. Keen	NAVAL CRIMINAL INVESTIGATIVE SERVICE WASHINGTON FIELD OFFICE John Wagner Special Agent in Charge	VIRGINIA STATE POLICE DIVISION 7, BUREAU OF CRIMINAL INVESTIGATIONS Commander David Russillo
FAIRFAX COUNTY POLICE DEPARTMENT Chief David M. Rohrer	MANASSAS PARK POLICE DEPARTMENT Chief John C. Evans	PENTAGON FORCE PROTECTION AGENCY Chief Richard S. Keevill	VIRGINIA STATE POLICE DIVISION 7, BUREAU OF FIELD OPERATIONS Captain Mike Spivey
FALLS CHURCH CITY POLICE DEPARTMENT Chief Harry W. Reitze	MARYLAND DEPARTMENT OF NATURAL RESOURCES POLICE Colonel George F. Johnson IV Superintendent	PRINCE GEORGE'S COUNTY POLICE DEPARTMENT Chief Mark Magaw	Copyright © 2012 by the Metropolitan Washington Council of Governments. www.mwcog.org
FAUQUIER COUNTY SHERIFF'S OFFICE Sheriff Charlie Ray Fox, Jr	MARYLAND NATIONAL CAPITAL PARK POLICE Montgomery County Division Interim Chief Antonio DeVaul	PRINCE WILLIAM COUNTY POLICE DEPARTMENT Chief Charlie T. Deane	All rights reserved. No part of this report may be reproduced in any form or by any means without writ- ten permission of the publisher.