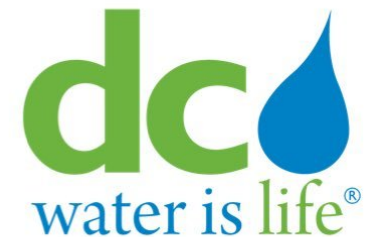


DISTRICT
SNOW
TEAM

 **GOVERNMENT OF THE**
DISTRICT OF COLUMBIA
MURIEL BOWSER, MAYOR

DC Department of Public Works | 2020-2021 Winter Campaign

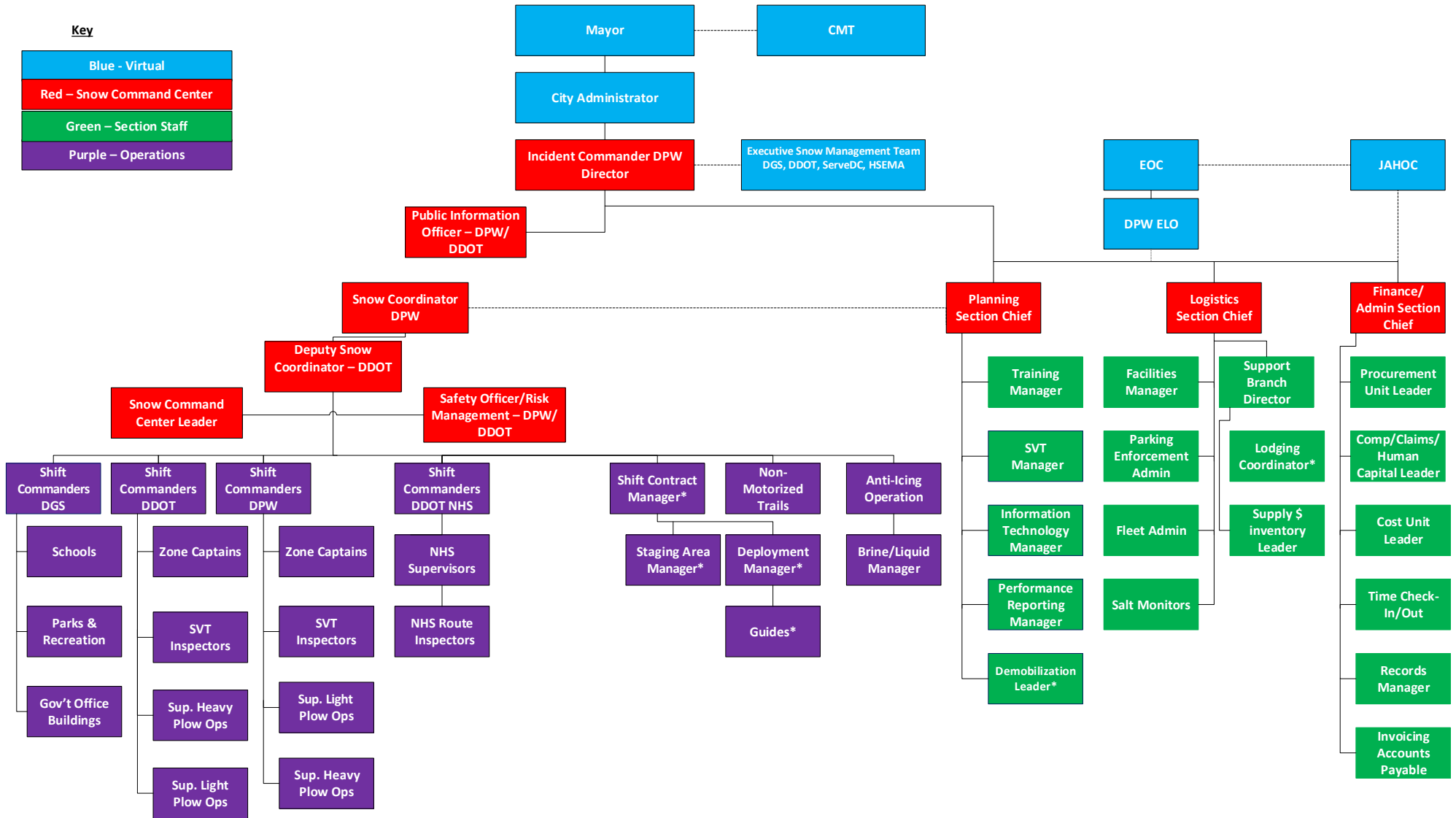
District Snow Team Partners



Organizational Chart

Key

Blue - Virtual
Red – Snow Command Center
Green – Section Staff
Purple – Operations



Roles and Responsibilities

	Department/Division	Position	Roles and Responsibilities
Command	Department of Public Works (DPW) Director	Incident Commander (IC)	<ul style="list-style-type: none"> • Provide oversight and control of snow operations for the District • Establish priorities, objectives, and strategies for snow operations • Activate snow operations plan • Disseminate snow deployment plan to initiate snow operations • Review and approve media releases regarding snow operations • Serve on the Mayor's Consequence Management Team
	Department of General Services (DGS), District Department of Transportation (DDOT), SERVE DC, Homeland Security and Emergency Management Agency (HSEMA)	Executive Snow Management Team	<ul style="list-style-type: none"> • Represent agency leadership • Provide support to the Incident Commander to make critical decisions regarding snow operations
Public Information Officer (PIO)	DPW and DDOT	Lead PIO	<ul style="list-style-type: none"> • Coordinate with partnering agencies to develop public information for snow events • Provide pre-event public information • Route draft public messages to the IC and Mayor's Office for approval • Provide ongoing public messages throughout snow operations
Operations	DPW	Snow Coordinator	<ul style="list-style-type: none"> • Receive direction from the IC • Monitor weather conditions • Provide recommendations to the IC regarding snow operations • Implement decisions regarding the following snow operations: <ol style="list-style-type: none"> I. Deployment level II. Shift commander assignments III. Number of crews IV. Pre-treatment strategy V. Contracted resources • Coordinate with Snow Command Center to implement snow plan

Battle Rhythm Dry Run

BATTLE RHYTHM DRY RUN

Monday October 19th

- Conference Call NWS 0830
- Notification Process
- Email from NWS Graphic to include Graphic by 2:00 PM

Tuesday October 20

- Conference Call NWS 0830
- Determine to do Brine Operation
- Reach out to coordinating agencies

Wednesday October 21

- Brine Operation next 24 Hours OPNS
- Final determination for full activation
- NWS 0830 AM
- CMT call determination
- NWS Snow Team 2:00 PM

Thursday October 22

- Conference Call 0830
- Brine OPNS Complete
- Operations plans brief out
- NWS AM Snow Team
- Decision to do a District Snow Emergency
- Snow Call CMT 2:00 PM

Friday October 23

- Conference call NWS 0830
- All other calls will be determined after the 0830 Call

Goal

To exercise the snow team from notification to exercise
Develop decision point for CMT Calls.

DAYS MONDAY

TUESDAY

WEDNESDAY

THURSDAY

FRIDAY

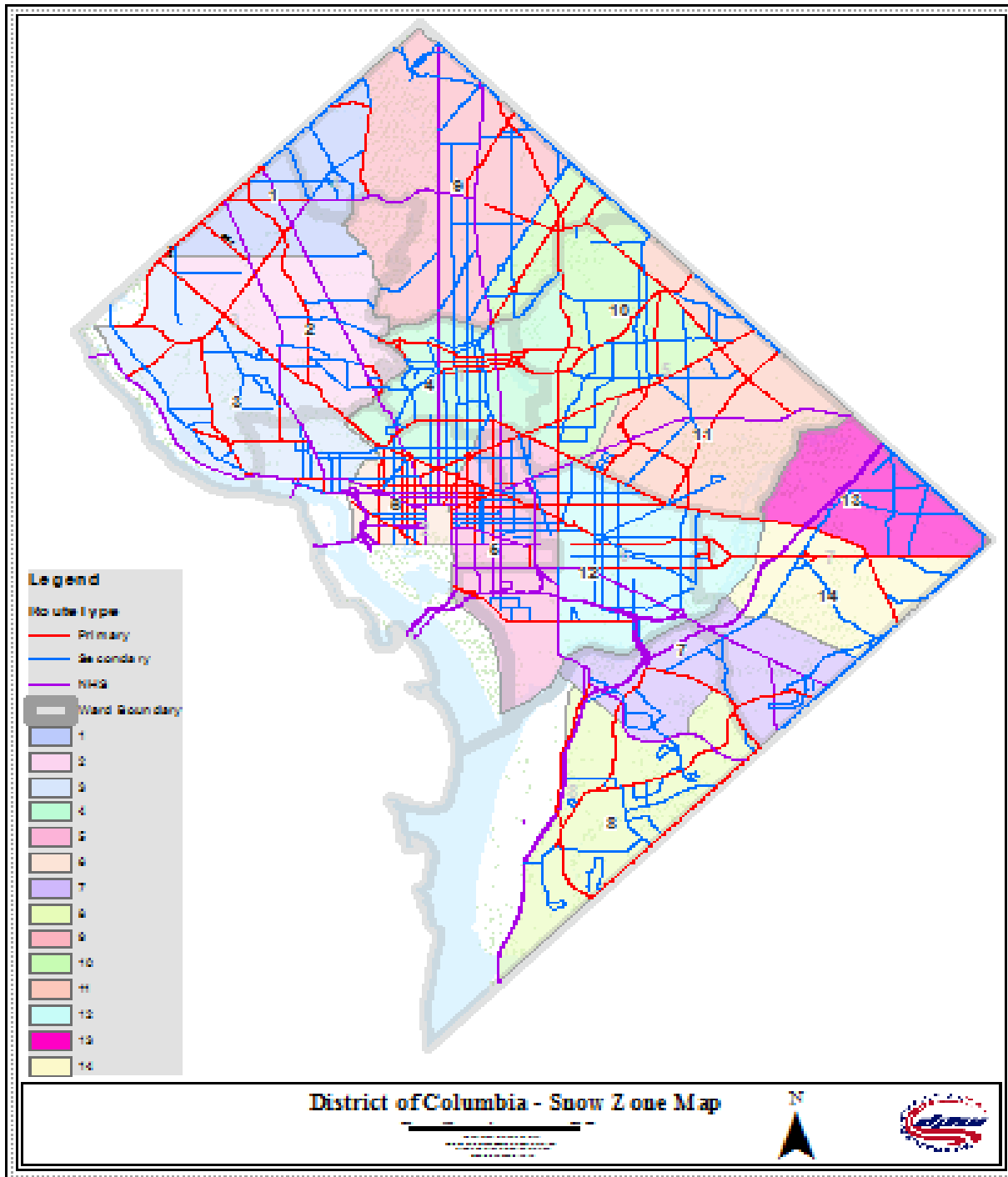
Weather Goal

6-8" by Friday with expectation of below freezing temp with an additional 2+ inches predicted for Saturday morning



Snow Zone Map

Snow Miles by Zone by Type																
Street Segment Type	Snow Zones														Total Length -Feet	Total Miles
	1	2	3	4	5	6	7	8	9	10	11	12	13	14		
NHS	17411.52	20284.49	36072.22	21735.66	112525.2	59983.33	47804.29	46428.42	43042.04	4156.71	16968.95	41979.18	32615.02	1630.27	502637.34	95.20
Primary	37653.61	37386.7	43987.29	64851.15	69721.52	41524.04	19965.96	55308.52	18421.29	83348.79	42207.8	56126.44		29943.72	600446.83	113.72
Secondary	36308.21	39690.08	72399.94	87722.95	72126.65	30211.95	52347.91	61427.66	88168.99	104083.7	51112.11	99917	42536.1	35594.72	873647.96	165.46
Total Length -Feet	91373.34	97361.27	152459.5	174309.8	254373.4	131719.3	120118.16	163164.6	149632.3	191589.2	110288.9	198022.6	75151.12	67168.71	1976732.13	374.38
Total Miles	17.31	18.44	28.87	33.01	48.18	24.95	22.75	30.90	28.34	36.29	20.89	37.50	14.23	12.72		



	Feet	Miles		Feet	Miles		Feet	Miles
NHS	17411.52	3.30	Primary	37653.61	7.13	Secondary	36308.21	6.88
	20284.49	3.84		37386.7	7.08		39690.08	7.52
	36072.22	6.83		43987.29	8.33		72399.94	13.71
	21735.66	4.12		64851.15	12.28		87722.95	16.61
	112525.24	21.31		69721.52	13.20		72126.65	13.66
	59983.33	11.36		41524.04	7.86		30211.95	5.72
	47804.29	9.05		19965.96	3.78		52347.91	9.91
	46428.42	8.79		55308.52	10.48		61427.66	11.63
	43042.04	8.15		18421.29	3.49		88168.99	16.70
	4156.71	0.79		83348.79	15.79		104083.69	19.71
	16968.95	3.21		42207.8	7.99		51112.11	9.68
	41979.18	7.95		56126.44	10.63		99917	18.92
	32615.02	6.18		N/A			42536.1	8.06
	1630.27	0.31		29943.72	5.67		35594.72	6.74

502637.34 95.20

600446.8 113.72

873647.96 165.46

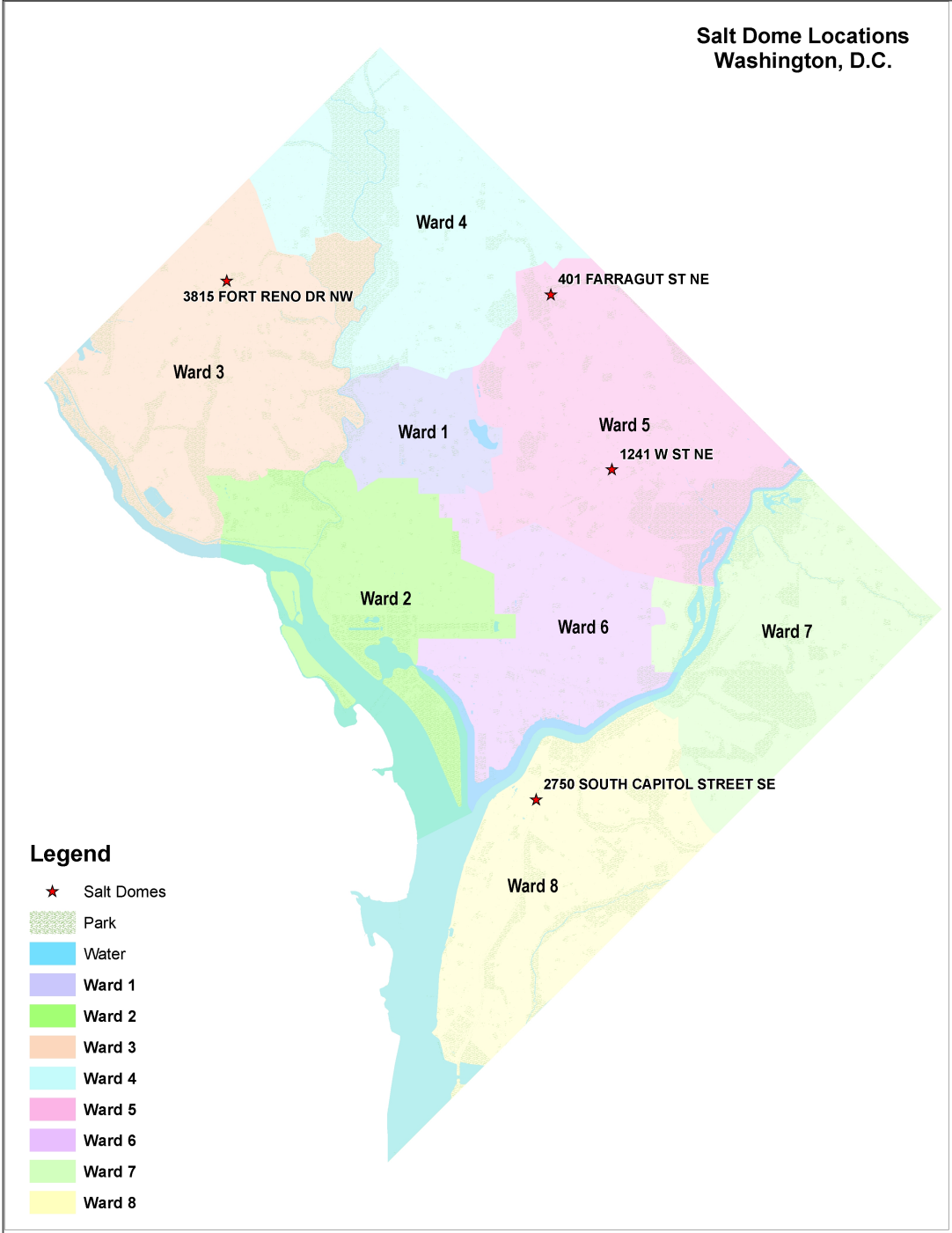
NHS Mileage: 95.2

Primary : 113.72

Secondary: 165.46

Salt Dome Locations

Salt Dome Locations
Washington, D.C.



New Initiatives

SURVEY 1-2-3

- Constant Monitoring of Surface, Sub-Surface and Air Temperatures and Road Conditions
- Survey 1,2,3 will be installed on each mobile device allowing each driver to rate route completion; Zone Captains SVT will approve each route

Geo Tab

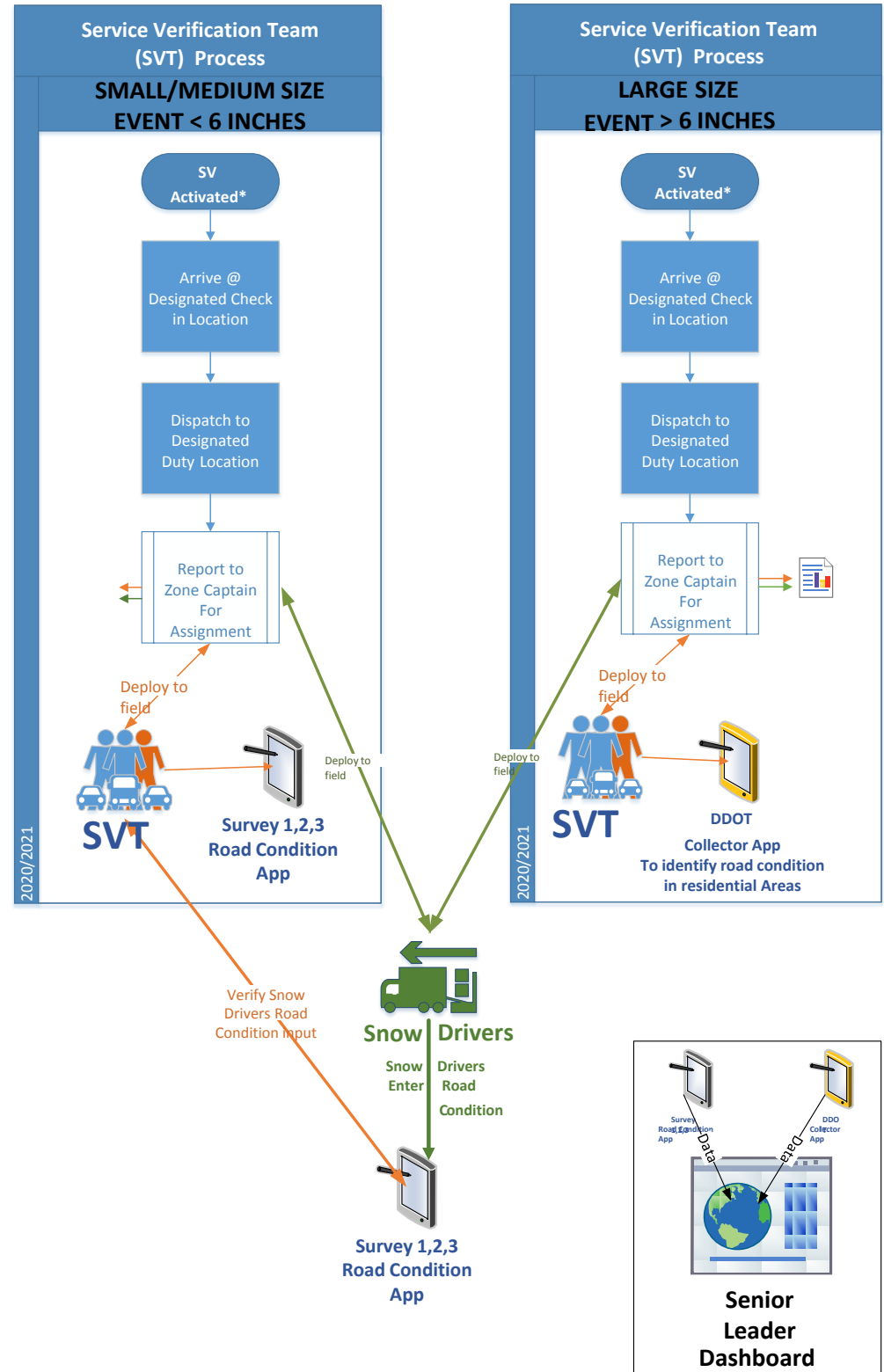
- Different type of devices are being installed in snow plows. This includes District plows as well as rented and contractor-owned vehicles.
- GeoTab will provide real-time location of vehicles and route completion for 400 vehicles
- More reliable connectivity will be achieved by installing the devices through the engine computer, thus protecting the devices from being jostled while the vehicle is being driven. This one upgrade eliminates a major cause of disrupted communication between the plow and the Snow Team.
- The new devices identify each plow by vehicle information number (VIN) and license tag number. They report the plow's location with a time stamp, and identify speed, direction and telemetry.

New Vehicles

- Updated User Interface in all vehicle's AVL system
- Reckless Driving Indicators
- Engine Diagnostic
- Environmental Salt Spreader Standard

Brine Capacity

Service Verification Team



Note: *Activation times are TBD by Snow Coordinator

Environmental Protection Measures

8Y]W]b['D]chDfc'YW]k]h '8C 99]b'NcbYs', / - CV'YW]j Y.'9j U'i UH' dchYbh]U''
a Yh'cXg]hc'fYXi WY'cf'a]b]a]hY' i gY'cZgcX]i a 'W'cf]XYfBU7 'k \]M' WUb'VY'hcI]W
hc'Uei Uh]W]Z'UbX'WU]i gYg'chYf]bZUgfi W]i fY'dfcV'Ya g

5'YfbUH]j Yg]hc'VY'Yj U'i UHYX'Zcf'fYXi W]b['BU7'.

- ∇ FYd'UW]b['BU7'`k]h'gc`X'WU'W]i a 'a U[bYg]i a 'UW]hUH
- ∇ DfYhYUH]b['UfYUgk]h'`ei]X'BU7'`k \]M'a UmfYXi WY'hY'Ua ci bh'cZgc`X'BU7'`
bYYXX'hc'a YYh'fYei]fYX'Yj Y'`cZgYfj]WY'

Environmental Protection Measures

Salt Reduction Pilot

(in partnership with DOEE, funded via U.S. EPA) **Road Salt Alternatives**

Salt Storage

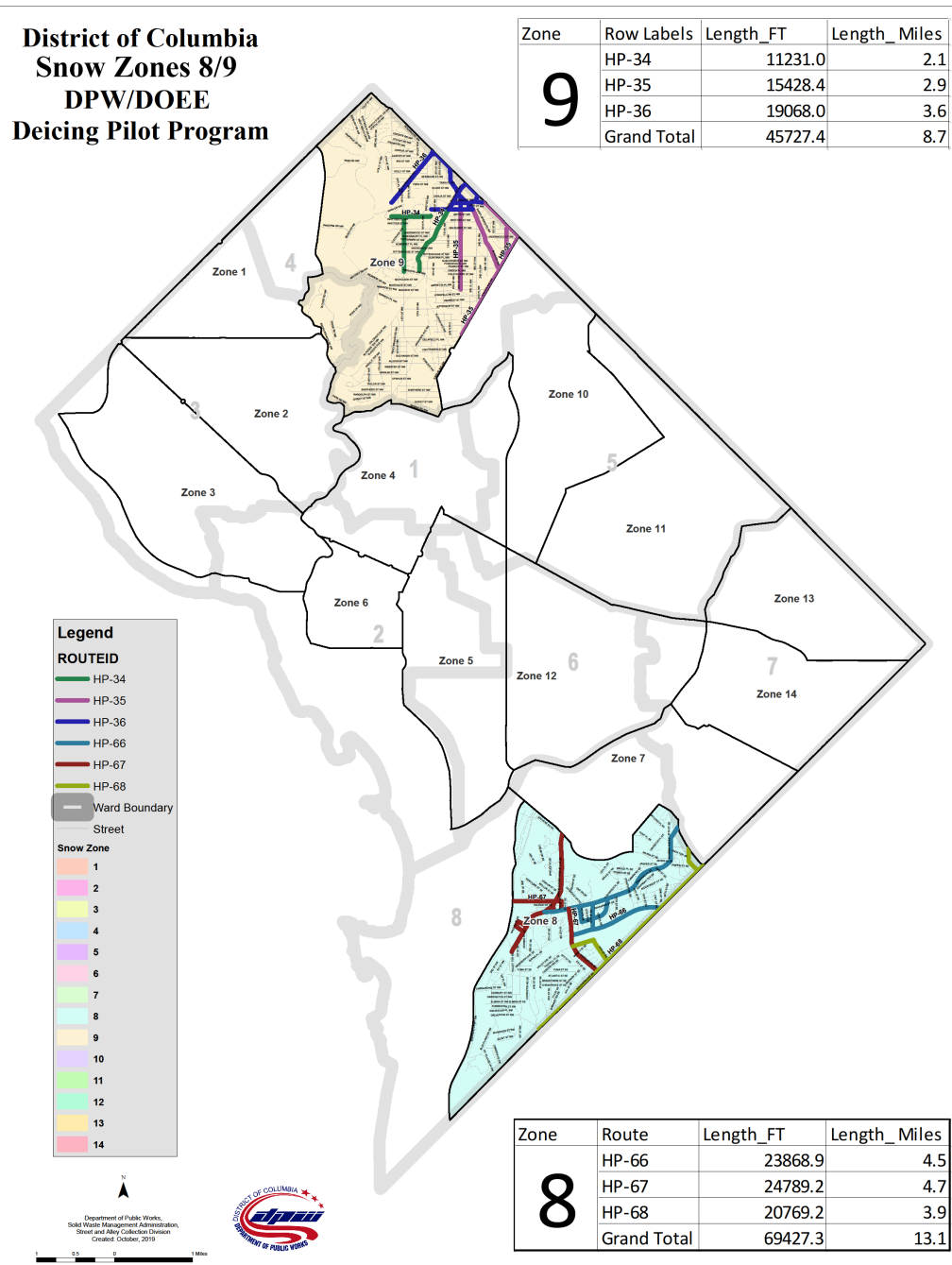
Reuse Briny Runoff

Snow Disposal Sites

Stormwater Best Management Practices (BMPs) and Contracted Specialist (via DOEE)



DPW/DOEE Deicing Pilot Program



COVID-19 Impact: Streateries

The District Snow Team is working with the Mayor's Office of Nightlife & Culture and the DC BID Council to develop a plan that will allow the Team to clear the streets of snow and ice.

Streateries: Compliance



Streeteries: Noncompliance



COVID-19 Impact: Telework

The District Snow Team will follow Mayor Bowser's lead regarding reopening the District.