



UNIVERSITY of MARYLAND
SCHOOL OF MEDICINE

SHOCK, TRAUMA AND ANESTHESIOLOGY
RESEARCH CENTER

National Study Center for Trauma & Emergency Medical Services

Maryland's Pedestrian/Bicyclist Fatality Review: Process and Preliminary Findings

Metropolitan Washington Council of Governments
Transportation Planning Board - Safety Subcommittee
December 10, 2019

NSC: Kim Auman (*Project Manager*), Erica Zimmerman (*Project Coordinator*)
MHSO: Jeff Dunckel (*Pedestrian-Bicycle Safety Program Manager*)

The Reason We Are Here Today

- **MISSION** – The MVA's MHSO is dedicated to saving lives and preventing injuries by reducing motor vehicle crashes through the administration of a comprehensive network of traffic safety programs.
- **VISION** – Anything other than zero deaths is unacceptable

Vision Zero:

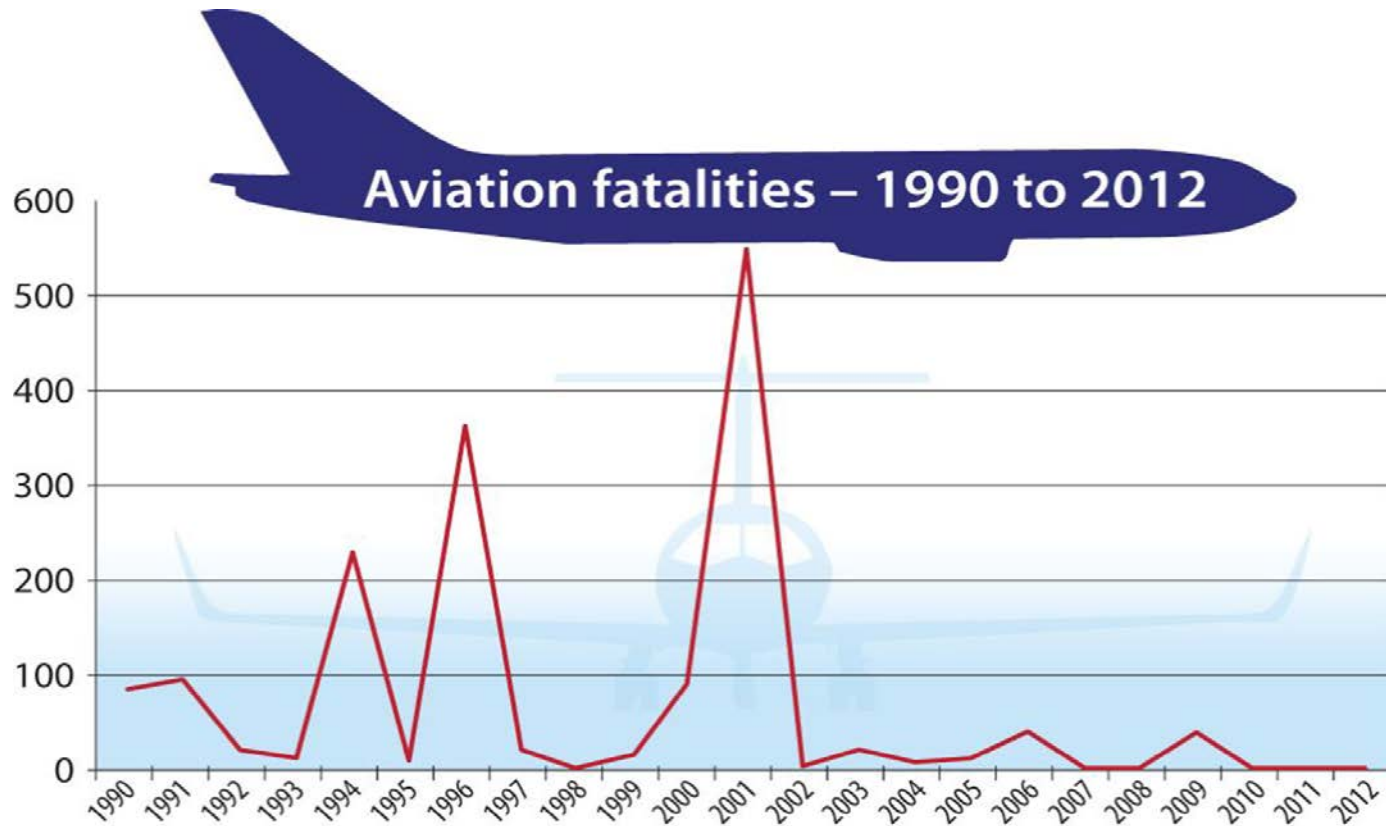
**Who believes we can ever achieve
zero pedestrian - bicycle fatalities?**



Challenges Faced



History of Aviation Fatalities

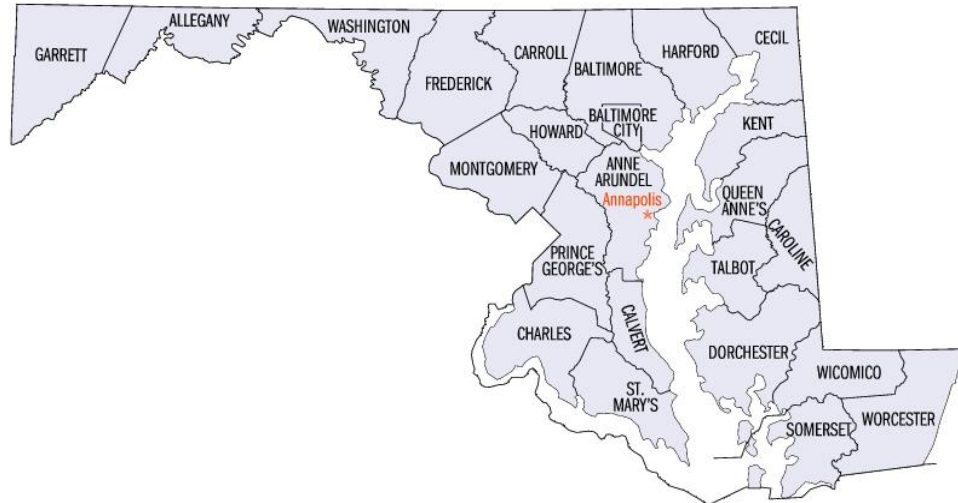


What's Our Little Black Box?

Crash Reconstruction Reports

Project Overview

- Review Maryland's 2016 Pedestrian/Bicyclists fatalities (n=127)
- *Goal:* To identify contributing factors and countermeasures
- Monthly meetings held to discuss cases in specific counties
- Analyze ACRS data to determine how many identified contributing factors in fatal crashes are also identified in non-fatal pedestrian crashes



Multidisciplinary Review Team

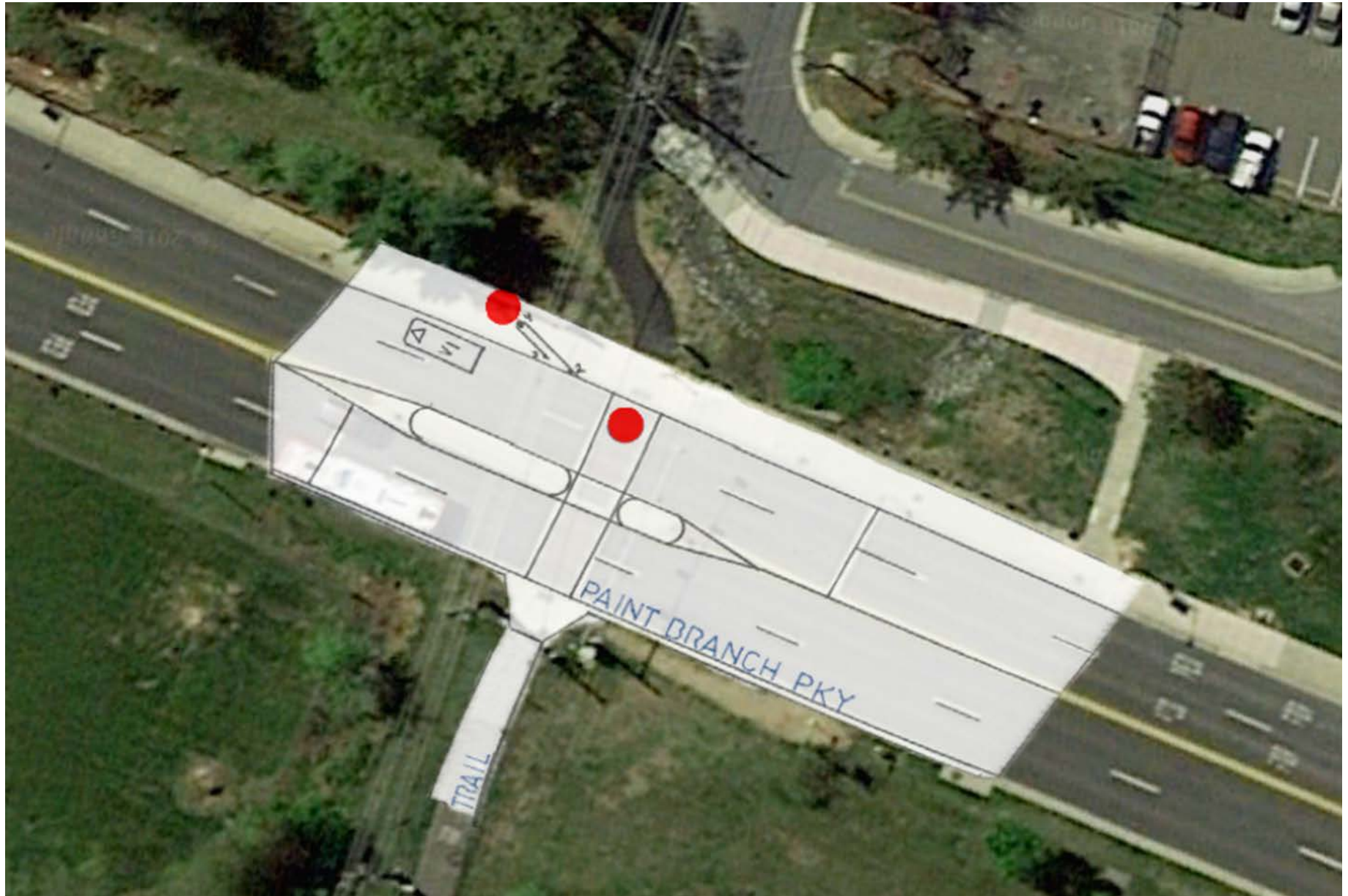


Sources of Information

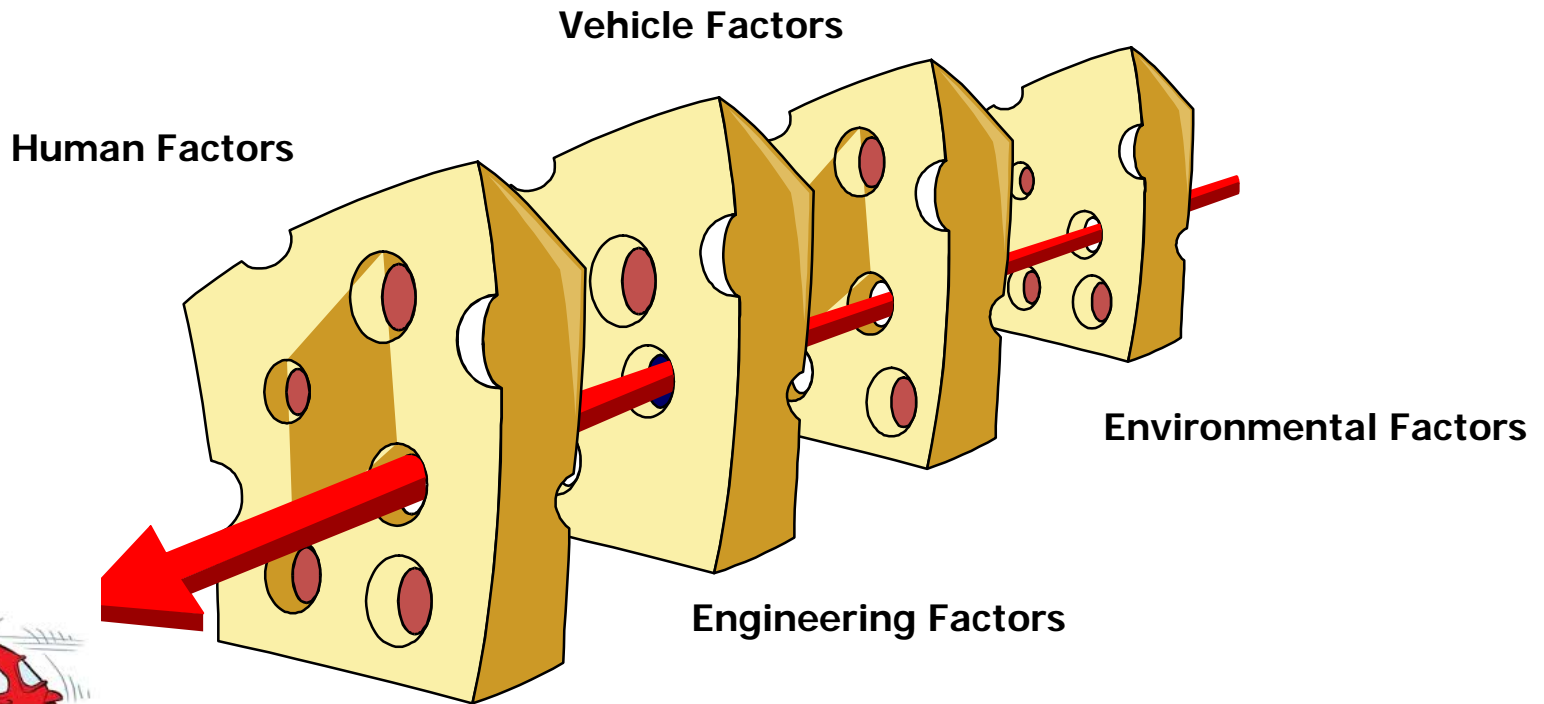
- *Detailed Crash Investigation Report (DCIR) – little black box for pedestrian/bicyclist fatal crashes **
- *ACRS reports **
- *OCME data – toxicology results*
- *Video surveillance – when available*
- *NTDB reviews – when available*
- *Google maps **
- *Media Reports **

* Sent to Review Team 1 week prior to meeting

Scene Photos



“Swiss cheese” model of causation



shutterstock.com • 199341074

Contributing Factors

Human:

Driver— Speeding, Distracted, Not Yielding, Impairment...

Pedestrian— Not Using Crossing, Dark Clothing, Impairment...

Environment: Weather ...

Engineering: Lack of Crossing Opportunities, Lighting, Speed limit ...

Vehicle: Visual Obstructions, Headlights...

Contributing Factor Classification

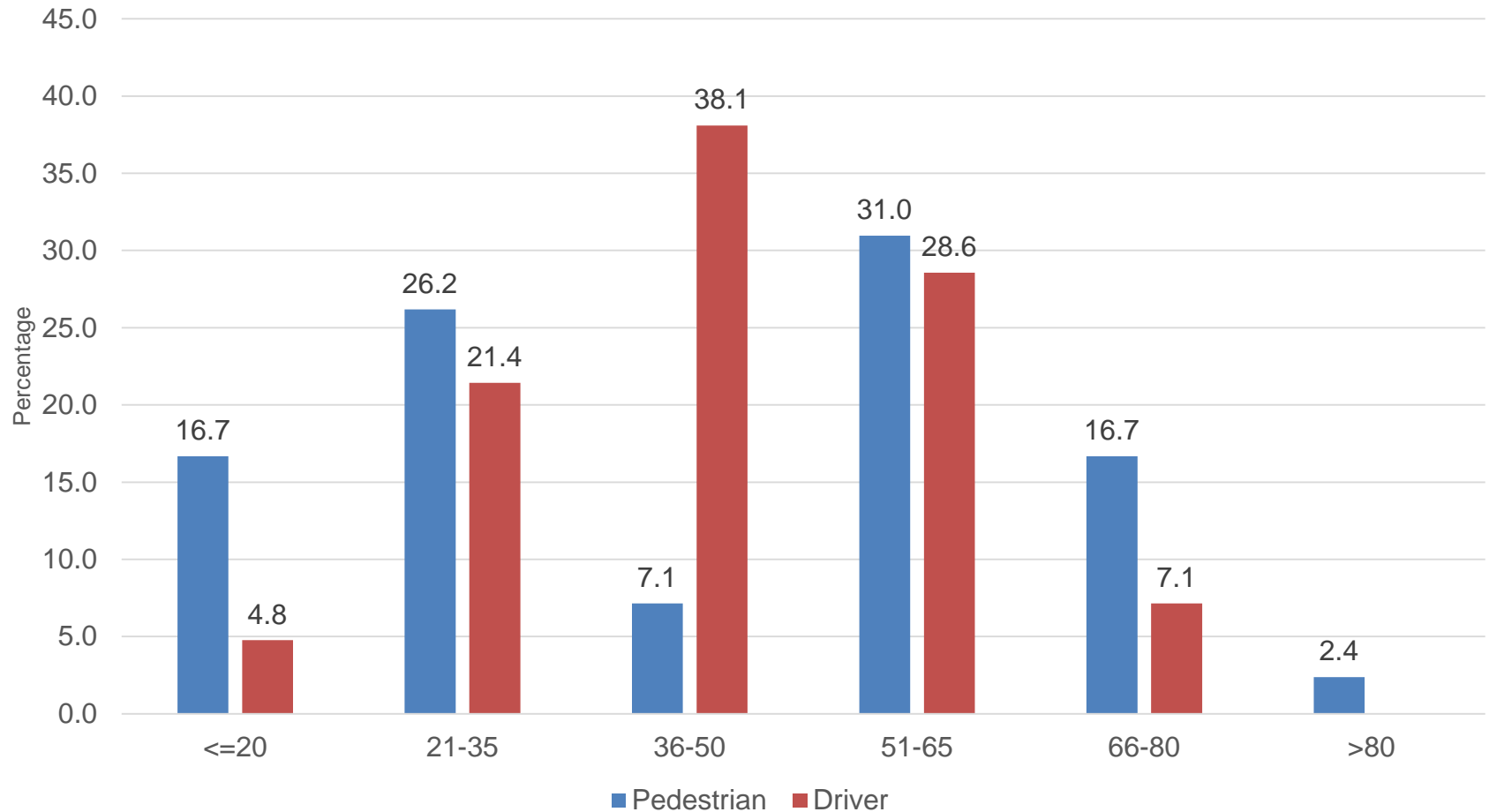
Certain - *Case review and evidence support high confidence the contributing factor was a primary contribution to the pedestrian impact and fatal outcome (established beyond doubt).*

Probable - *Case review and evidence support moderate confidence the contributing factor was a primary contribution to the pedestrian impact and fatal outcome (likely to happen).*

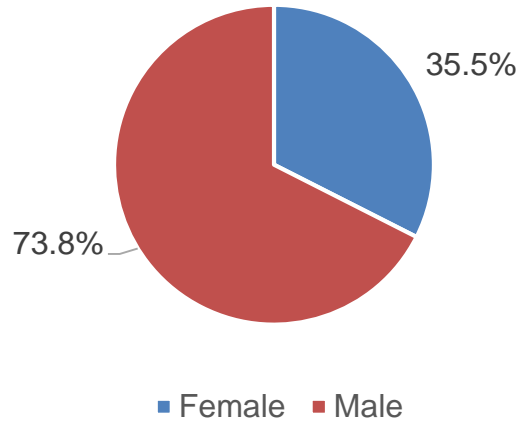
Possible - *Case review and evidence support minimal confidence the contributing factor was a primary contribution to the pedestrian impact and fatal outcome (may or may not have occurred).*

*Preliminary Findings from
41 Case Reviews*

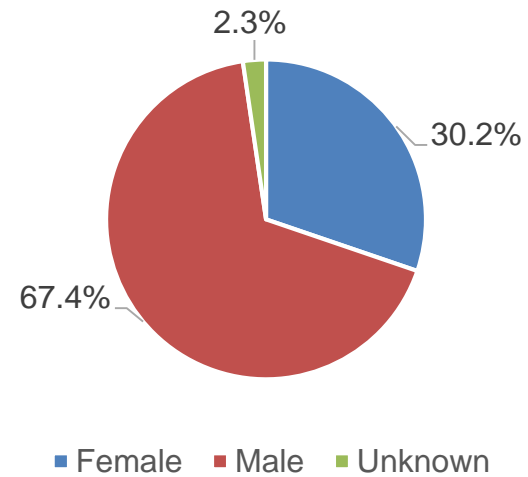
2016 Pedestrian Fatal Crashes: Distribution of Pedestrian and Driver Age



2016 Pedestrian Fatal Crashes: Pedestrian Sex

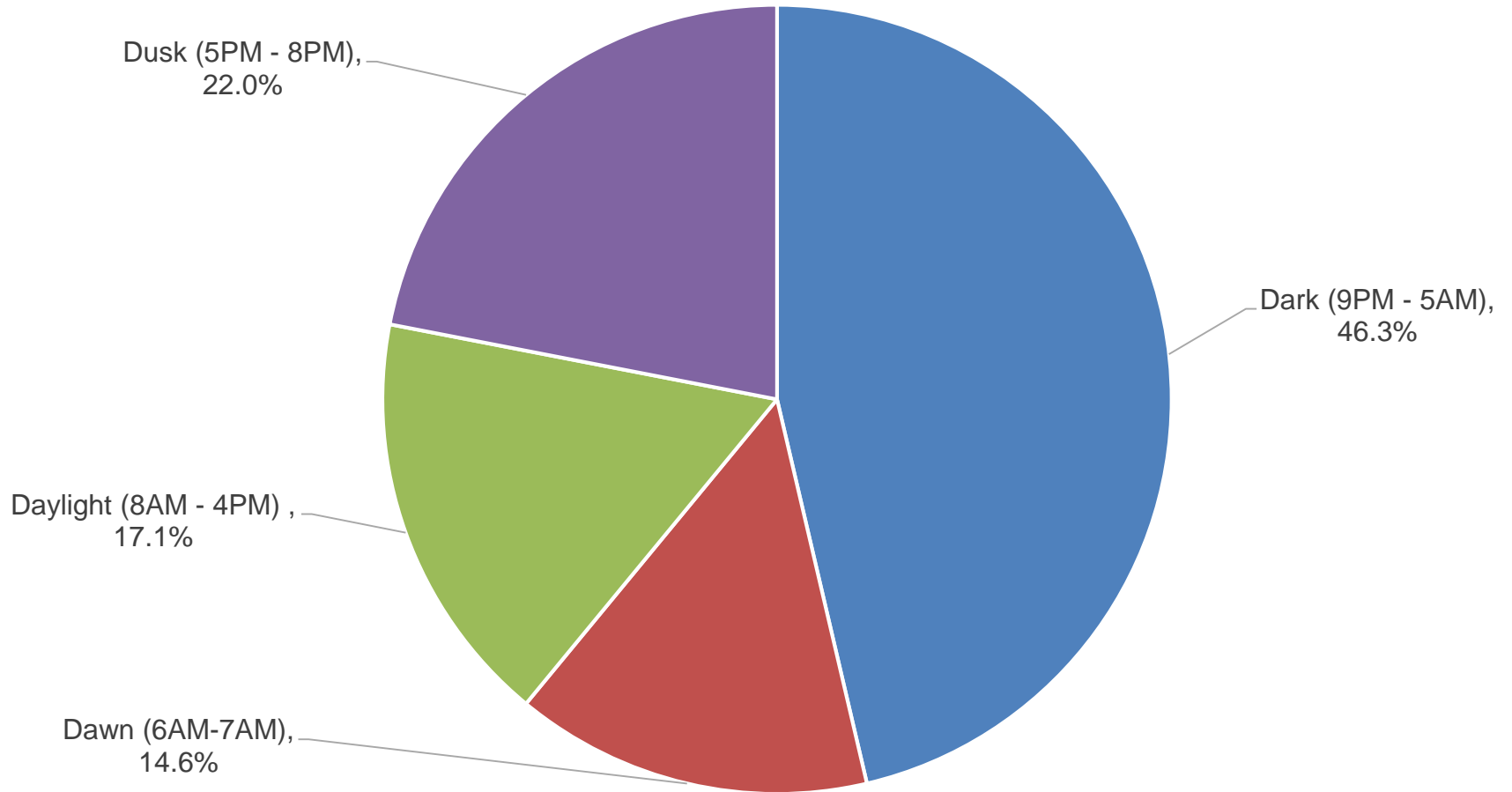


2016 Pedestrian Fatal Crashes: Driver Sex



In one case
driver was
never located.

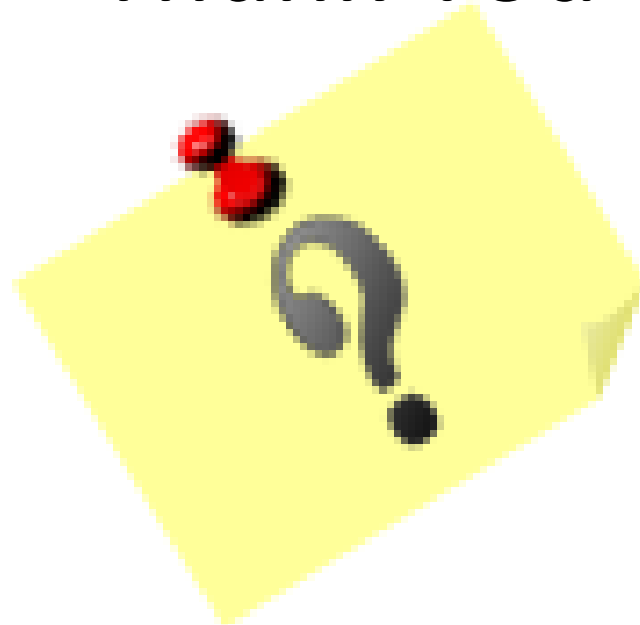
2016 Pedestrian Fatal Crashes: Time of Crash



Potential Countermeasures

Stay Tuned ...

Thank You



Any Questions

Contacts:

- Kim Auman: (410) 328-8331
kauman@som.umaryland.edu
- Erica Zimmerman: (410) 328-7231
ezimmerman@som.umaryland.edu