



# TPB Regional Public Transportation Subcommittee

March 22, 2021  
Lezlie Rupert, DDOT  
David Miller, Foursquare ITP



# About DDOT and moveDC



# About DDOT

District Department of Transportation (DDOT) manages, maintains and improves Washington, DC's multimodal transportation infrastructure

***DDOT's Mission:*** equitably deliver a safe, sustainable and reliable multimodal transportation network for all residents and visitors of the District of Columbia



# What is moveDC?

- moveDC sets the 25-year vision for the transportation system in Washington, D.C.
- Used to guide and prioritize investment and development
- Updated regularly to reflect the evolving needs of the District
  - First completed in 2014
  - Update to be released in 2021



*moveDC fulfills  
the federal  
requirement to  
develop a  
long-range  
transportation  
plan*

# Equity in moveDC

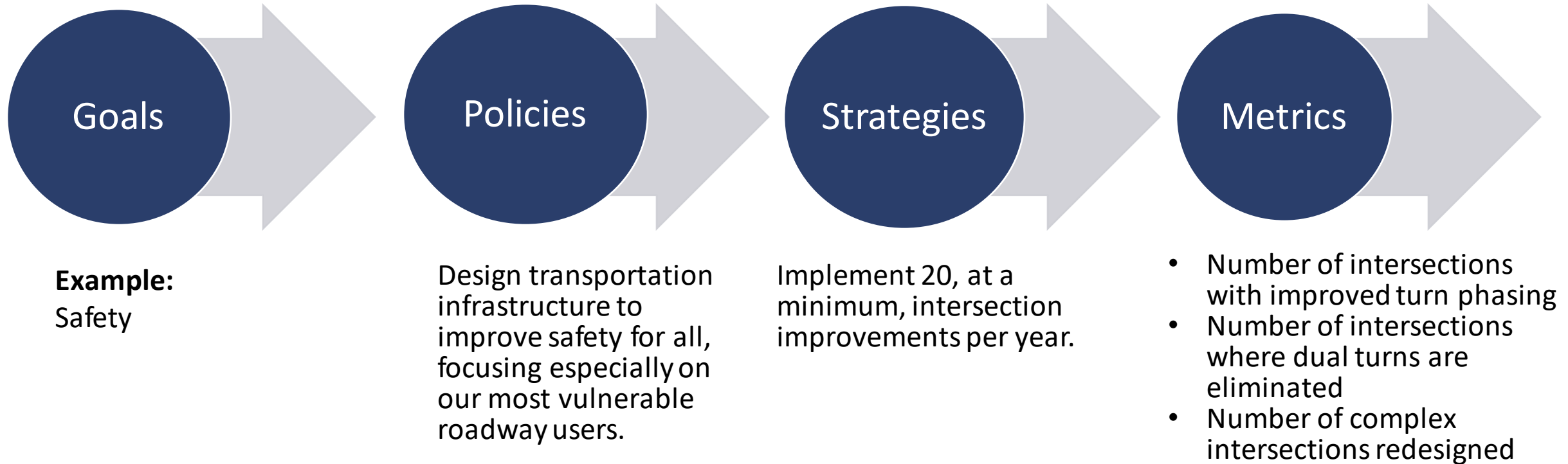
It is DDOT's intention that equity manifests in all of the goals and policies of moveDC. Equity is a foundational and driving factor that undergirds the plan and process.

## **DDOT's definition of equity includes four key areas:**

1. Participatory planning and decision-making
2. Shared and just system outcomes
3. Attention to historically under-resourced communities
4. Overcoming existing disparities

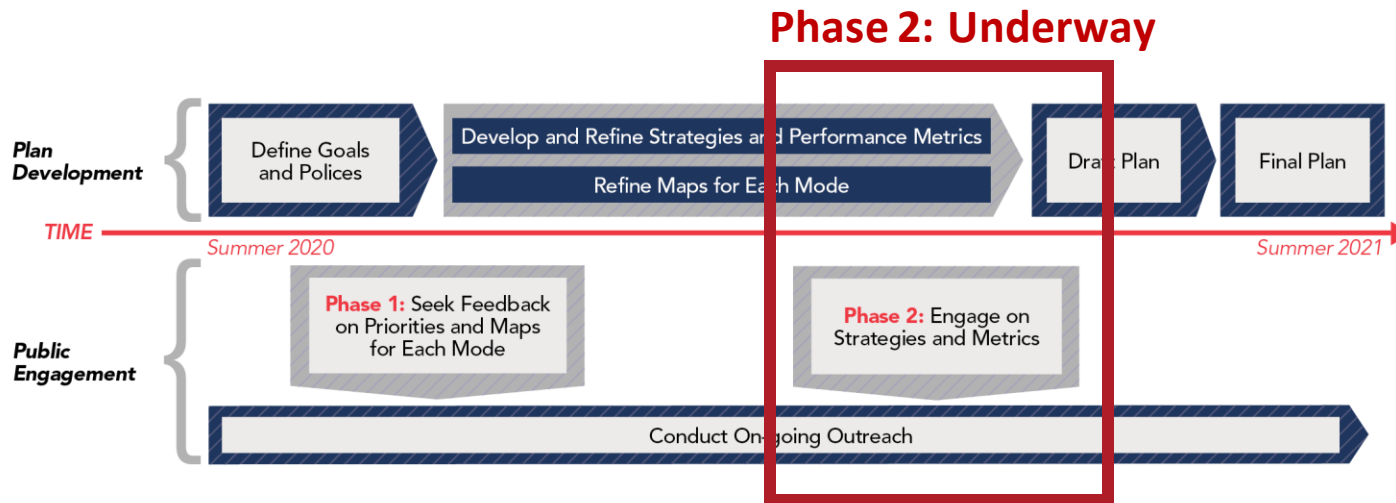
*DDOT has developed an equity statement for moveDC, available on the plan website at [wemovedc.org](http://wemovedc.org).*

# moveDC 2021 Plan Framework



# moveDC Update Process

## Phase 2 Public engagement February – March 2021



- Provide your input on moveDC strategies by taking the survey!
  - Available via web browser or mobile device until **March 31**
  - ***Rebrand.ly/Phase2Survey***
- Call **202-599-7371** to speak to DDOT “live” during office hours
  - Thursdays in February and March from 10:00 to 11:00 AM
  - Or, call any time to leave a voicemail and receive a call-back
- Email us: [movedc@dc.gov](mailto:movedc@dc.gov)



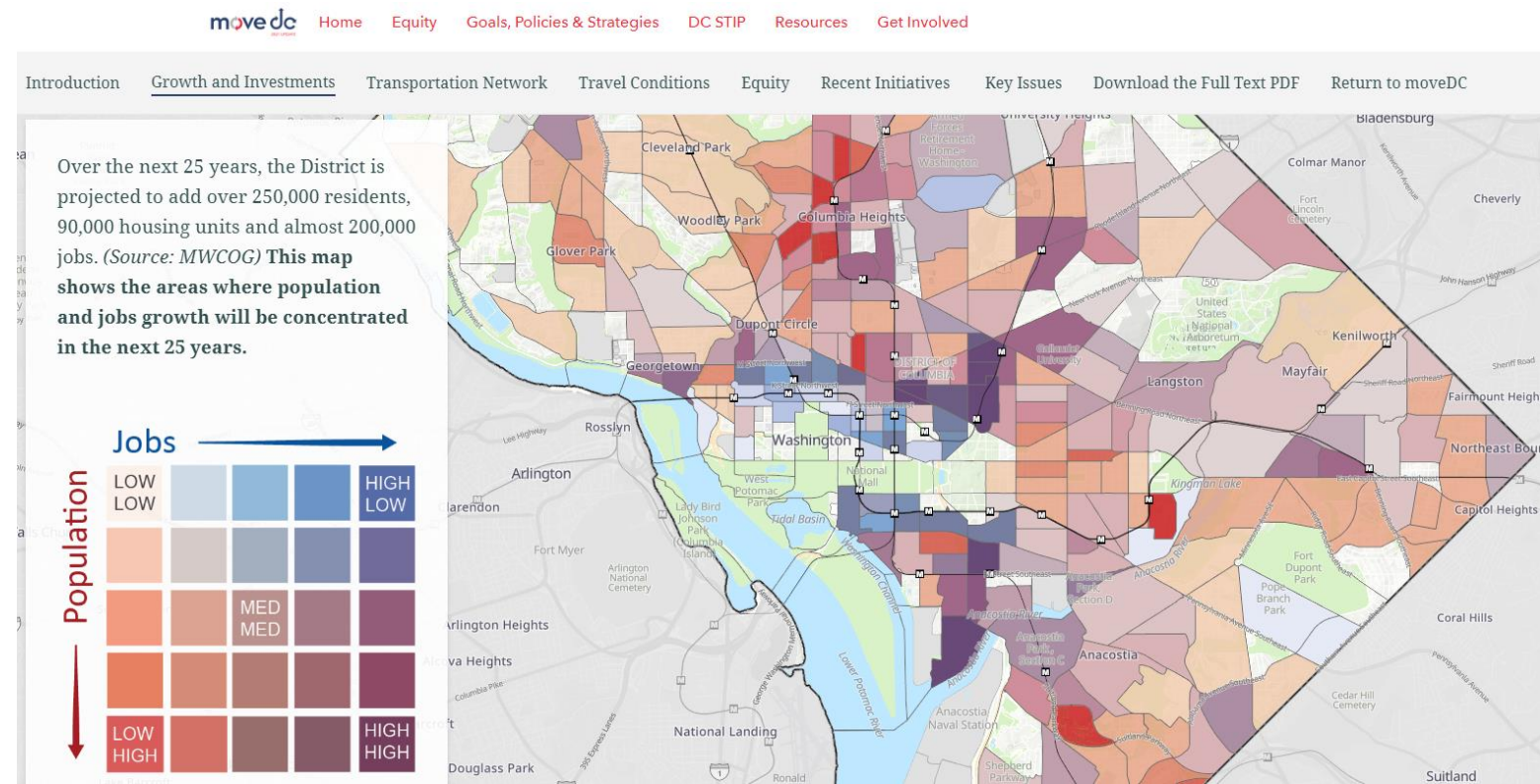
# moveDC: updated maps!



# moveDC Snapshot

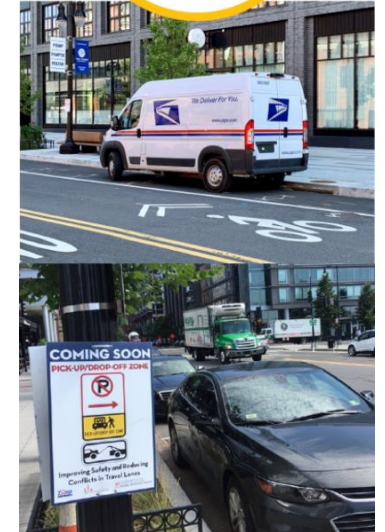
The moveDC Snapshot Story Map shows how our transportation network works today. We encourage you to explore it for yourself at [rebrand.ly/moveDCsnapshot](https://rebrand.ly/moveDCsnapshot)

- We've added over 100,000 residents since 2010 and anticipate adding 250,000 more by 2045
- Most residents (70 percent) and jobs (80 percent) are within walking distance of high-frequency transit



# Mobility Priority Networks

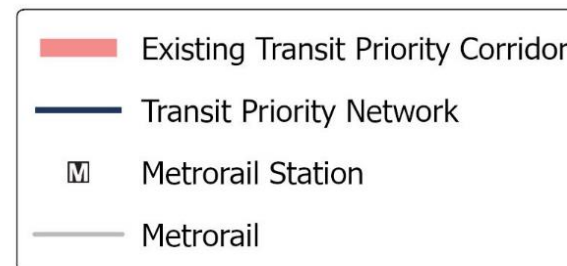
- Mobility Priority Networks show streets on which DDOT will invest in **safety and mobility improvements** for specific modes of transportation
- Goal is to make it easier to move both people and goods, enhancing safety, efficiency, connectivity and access
- Networks **do not indicate specific projects or improvements** – however, DDOT will use these networks to guide future decisions related to project identification, design and development



Mobility Priority Networks are available on [wemovedc.org](http://wemovedc.org)

# Refined Transit Priority Network

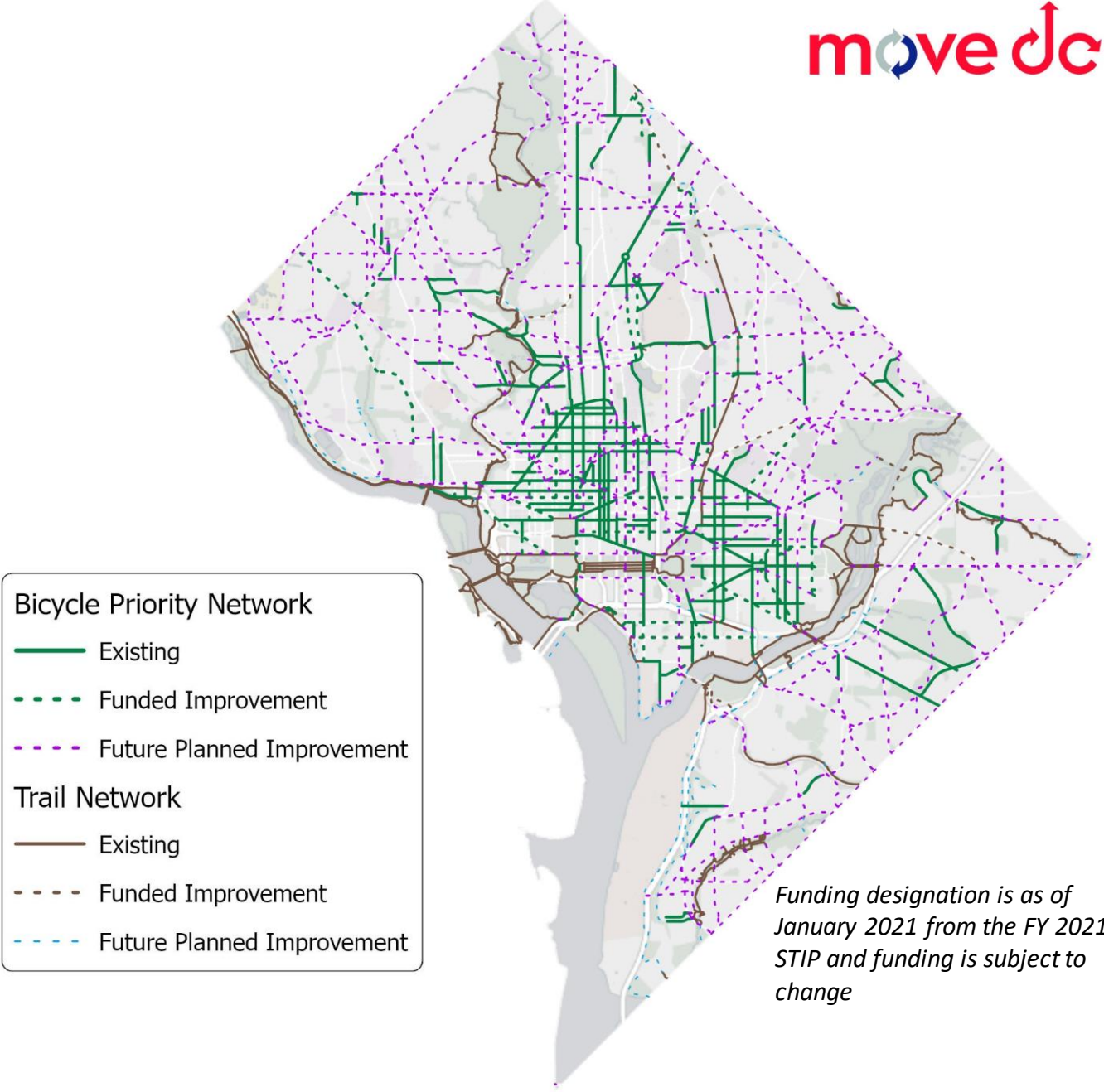
- Priority to:
  - Move transit vehicles more efficiently
  - Improve travel times and reliability for passengers
- Infrastructure may include:
  - Dedicated transit lanes
  - Better transit stops
  - Special treatment for buses at intersections





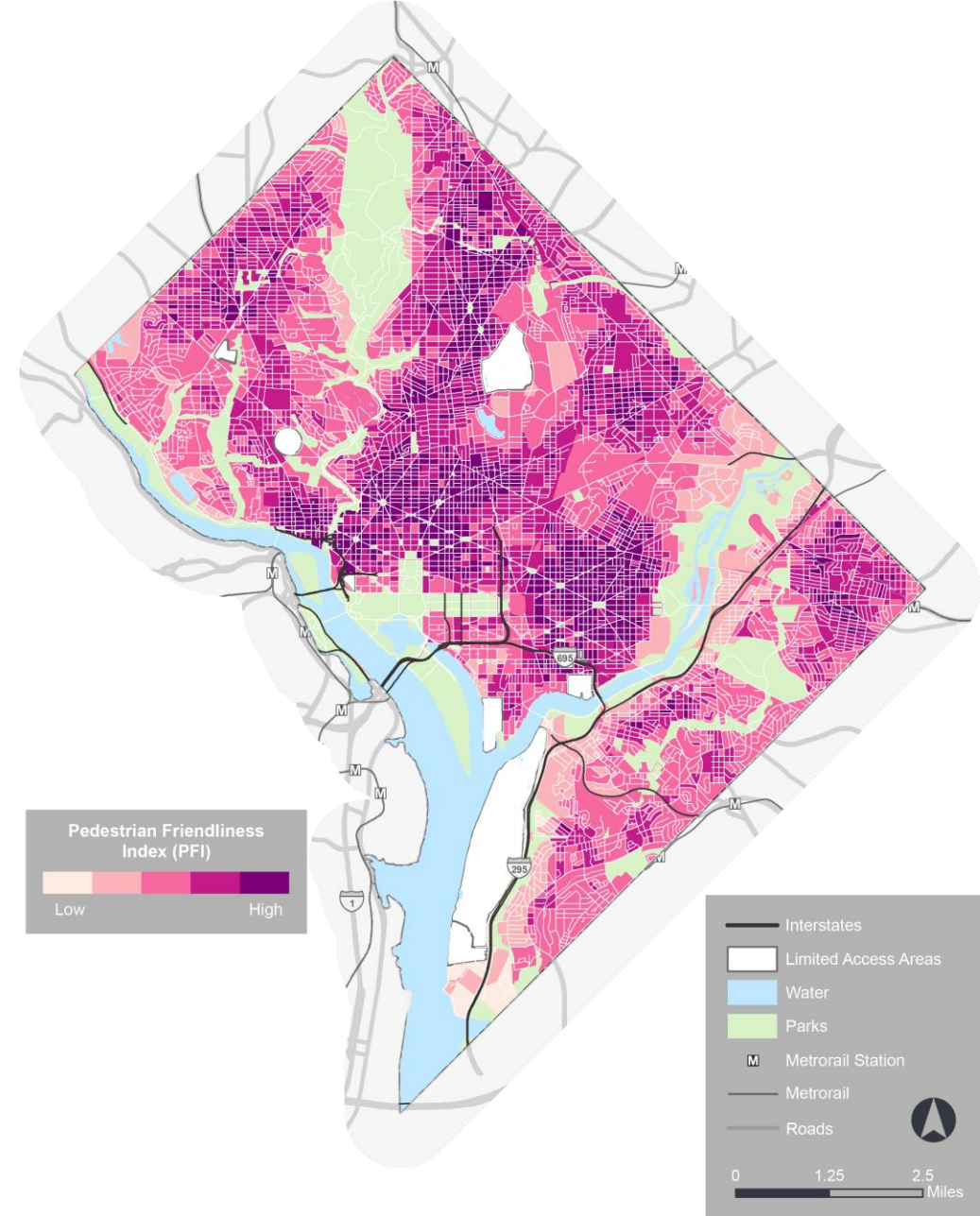
# Refined Bicycle Priority Network

- Connected bicycle routes that:
  - Serve all residential areas
  - Provide low-stress routes that are safe and comfortable for all cyclists
- Network includes
  - Existing on-street bike facilities and trails
  - Funded Improvements
    - Includes DDOT's "20 by 22" initiative
    - Projects included in the FY 21 STIP
  - Future Planned Improvements
    - Locations where bicycle priority may be added in the future



# Pedestrian Priority

- Goal: safe, connected sidewalks on every street
- Pedestrian-focused strategies
- Implement Vision Zero
- Improve sidewalk condition and accessibility for persons with disabilities



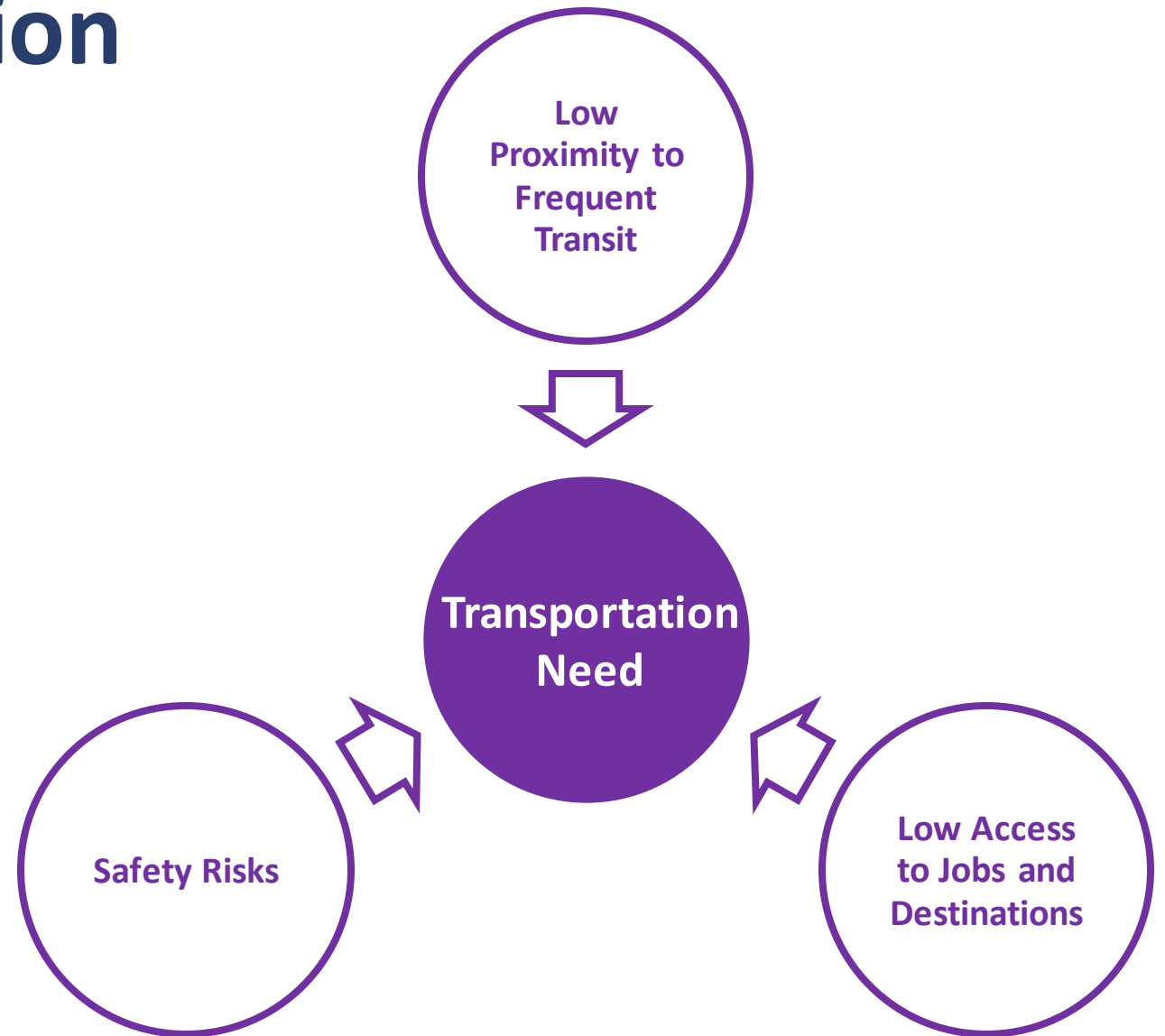


# Transportation Needs



# What is a Transportation Need?

- Areas of District where there is a need for improvement based on **three factors**:
  - Proximity to **frequent transit**
  - Access to **jobs** and **destinations**
  - Proximity to **safety risks**



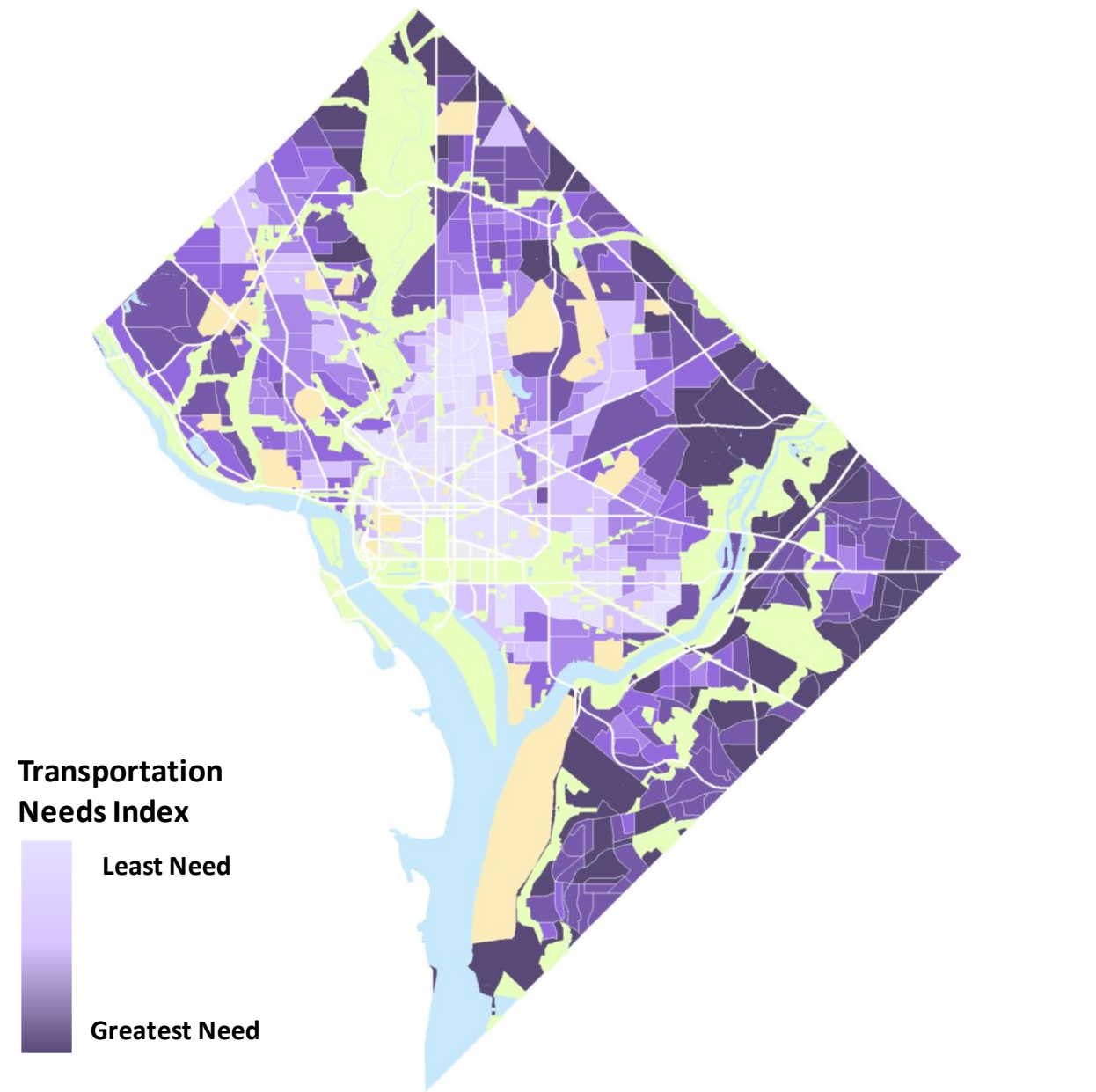
# Purpose of Measuring Transportation Needs

- Brings together multiple elements of moveDC, specifically **goal areas of Safety and Mobility** and the integration of **Equity**
- Provides guidance on where there is the **greatest need and opportunity to improve**
- Helps DDOT **prioritize** investment and projects; **improve** and strengthen areas with the greatest needs; and target disparate system outcomes to provide a **more equitable transportation network**

# Draft Transportation Needs Map

- Areas with the **greatest** transportation needs are shaded **darker**
- Areas with the **least** transportation needs are shaded **lighter**

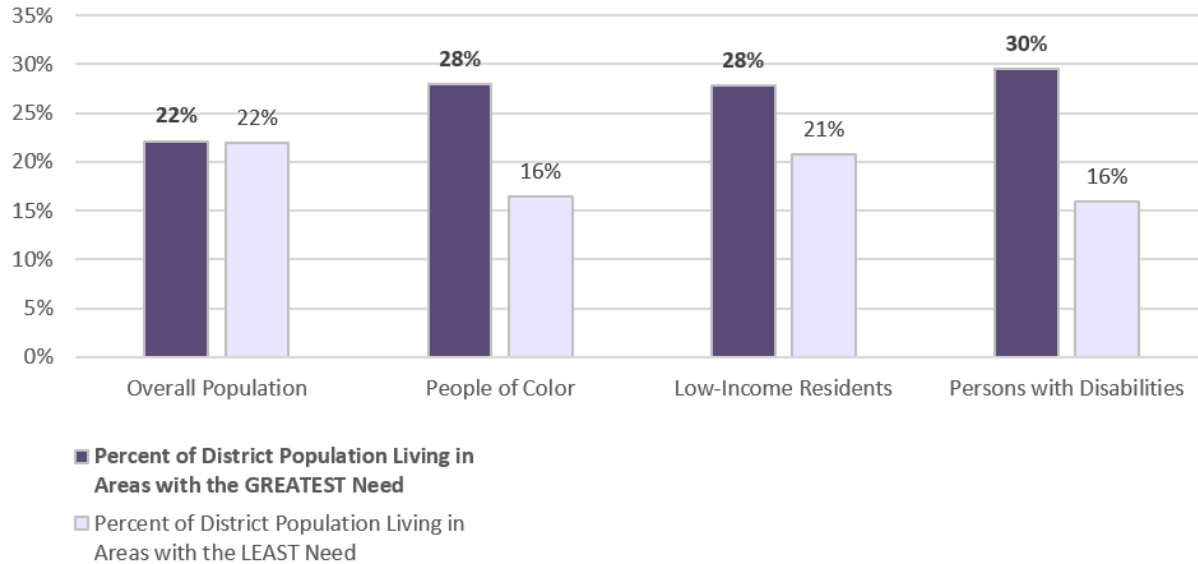
*Interactive map available on [wemovedc.org](https://www.wemovedc.org)*





# Considering Equity

Percent of District Population by Area of Need



Disadvantaged communities have high concentrations of:

- People of color
- Low-income people
- People with disabilities
- People with limited English proficiency

Disadvantaged people are over-represented in areas with the greatest transportation needs. This will require DDOT to be intentional and inclusive as we advance our projects and programs.

