



Regional Transportation Priorities Plan

For the National Capital Region



Purpose

An aerial photograph of a city street intersection. The street has multiple lanes with white lane markings and arrows. A yellow taxi and a white car are visible in the foreground. The text is overlaid on a semi-transparent dark grey rectangular area in the center of the image.

The Regional Transportation Priorities Plan aims to identify strategies with the greatest potential to respond to our most significant transportation challenges.

Key Principles

The Priorities are intended to :

- Be within reach, both financially and politically
- Achieve greater efficiency by making better use of our existing infrastructure, and packaging complementary strategies
- Encourage area leaders to consider regional needs when developing projects

Planning Process

REGIONAL GOALS

Based on the *TPB Vision*



CHALLENGES

Standing in the way of achieving our goals

STRATEGIES

With the Greatest Potential to respond to challenges

- *Near Term Strategies*
- *On-Going Strategies*
- *Long Term Strategies*

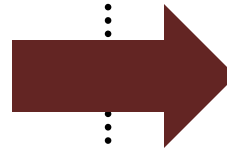
A mix of technical work, public outreach, and stakeholder feedback provided input into the development of the Plan

Priorities

The three priorities in this plan are like building blocks, all essential in achieving our shared goals

PRIORITY 1 STRATEGIES

- Maintenance of the Transit System
- Maintenance of Roads and Bridges



**Move More
People and Goods
More Efficiently**

Alleviate Congestion
and Crowding, and
Accommodate Future Growth

**Strengthen
Public Confidence
and Ensure Fairness**

Pursue Greater
Accountability, Efficiency,
and Accessibility

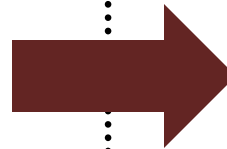
**Meet Our
Existing Obligations**

Maintain the
Transportation System
We Already Have

Priorities

PRIORITY 2 STRATEGIES

- Ensure Accessibility for All Residents
- Engage and Communicate with the Public
- Promote System Efficiency Through Management and Operations, and the Appropriate Use of Technology



**Move More
People and Goods
More Efficiently**

Alleviate Congestion
and Crowding, and
Accommodate Future Growth

**Strengthen
Public Confidence
and Ensure Fairness**

Pursue Greater
Accountability, Efficiency,
and Accessibility

**Meet Our
Existing Obligations**

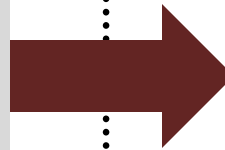
Maintain the
Transportation System
We Already Have

Priorities

PRIORITY 3

Near-Term and Ongoing
STRATEGIES

- Access to Transit Stops and Stations
- Alleviating Roadway Bottlenecks
- Support for Electric Vehicles
- Promotion of Commute Alternatives
- Pedestrian Infrastructure
- Bicycle Infrastructure
- Bus Priority Treatments
- Increasing Roadway Efficiency
- Traffic Laws: Update & Enforce



**Move More
People and Goods
More Efficiently**

Alleviate Congestion
and Crowding, and
Accommodate Future Growth

**Strengthen
Public Confidence
and Ensure Fairness**

Pursue Greater
Accountability, Efficiency,
and Accessibility

**Meet Our
Existing Obligations**

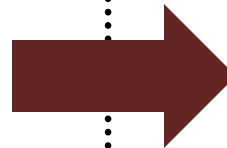
Maintain the
Transportation System
We Already Have

Priorities

PRIORITY 3

Long-Term STRATEGIES

- Additional Capacity on the Existing Transit System
- Concentrated Growth in Activity Centers
- Enhanced Circulation within Activity Centers
- Bus Rapid Transit & Other Cost-Effective Transit Alternatives
- Express Toll Lanes



Move More People and Goods More Efficiently

Alleviate Congestion
and Crowding, and
Accommodate Future Growth

Strengthen Public Confidence and Ensure Fairness

Pursue Greater
Accountability, Efficiency,
and Accessibility

Meet Our Existing Obligations

Maintain the
Transportation System
We Already Have

Bus Elements



Improve Access to Transit Stops and Stations (Near-Term Strategy 1)

Make it easier and safer to get to bus stops and rail stations, especially by modes other than car.

Ensure Maintenance of the Transit System (On-going Strategy 1)

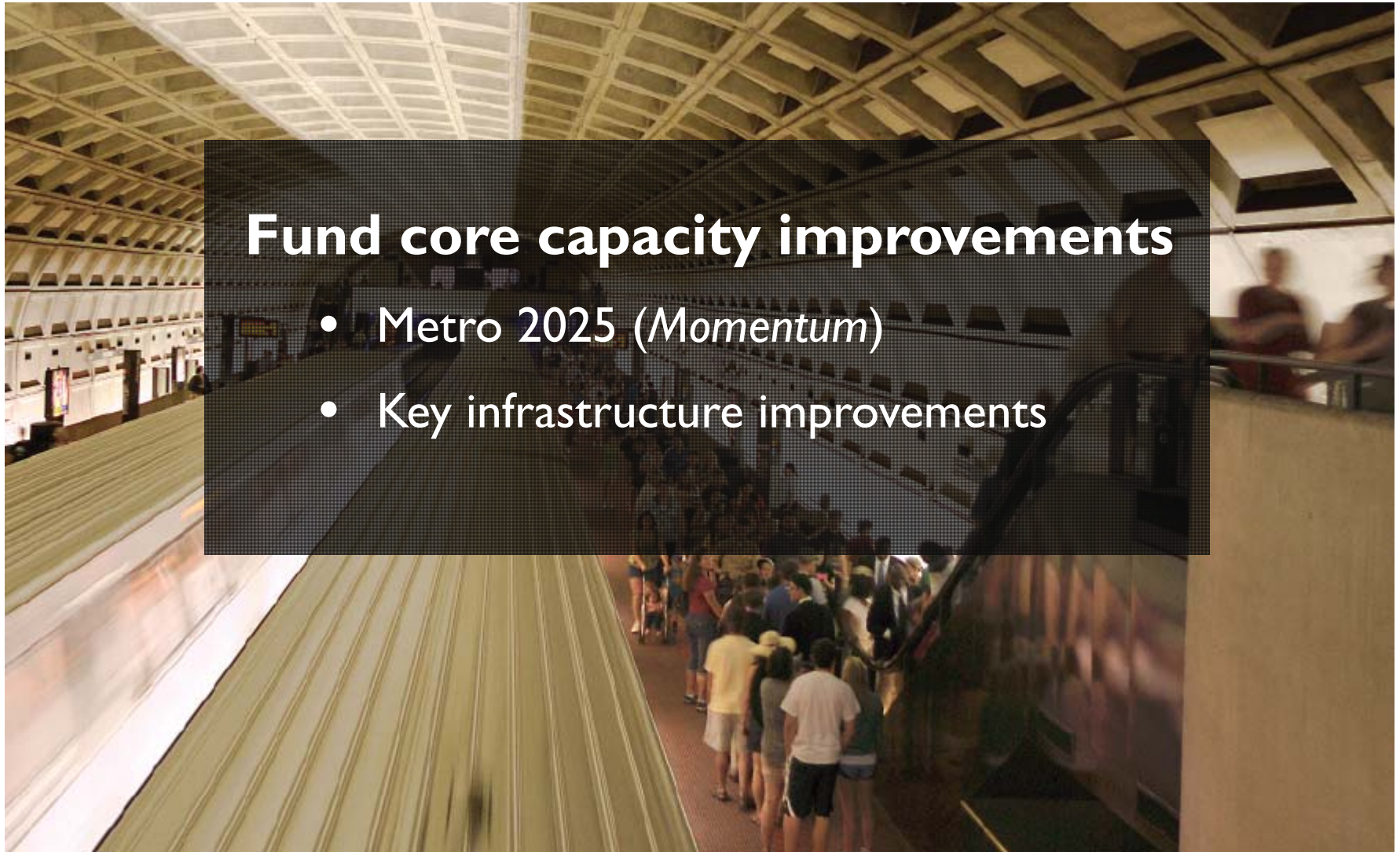
Keep the Metrorail, Metrobus, local bus, and commuter rail systems in the region safe and in good working order

Apply Priority Bus Treatments

(On-going Strategy 3)

Apply priority bus treatments on key routes to make bus transit faster; more reliable, and more convenient

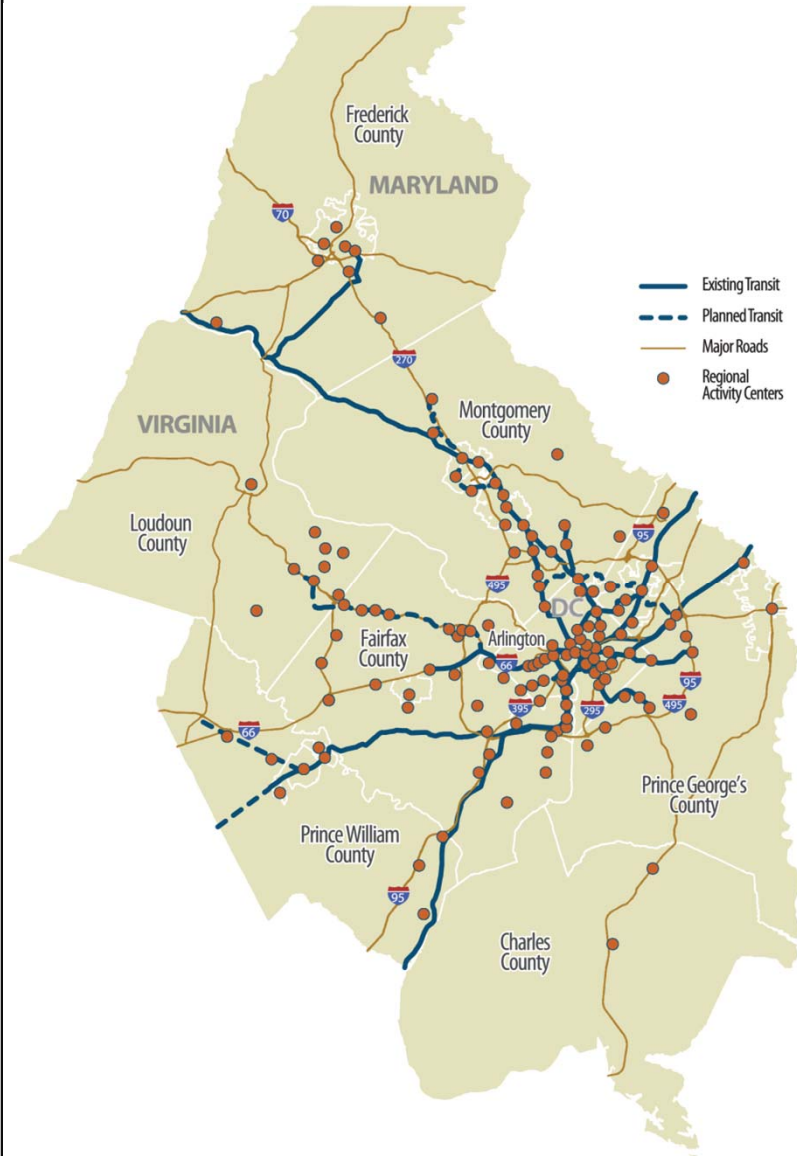
Core Capacity



Fund core capacity improvements

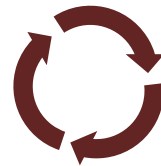
- Metro 2025 (*Momentum*)
- Key infrastructure improvements

Activity Centers



Concentrated Growth in Activity Centers

- Maximizes our existing road and rail infrastructure
- Supports more efficient modes



Enhanced Circulation within Activity Centers

- Improve bike/pedestrian infrastructure, local bus service, and street connectivity



Focus on Activity Centers on the Eastern Side of the Region

- Supports job growth and commercial activity in areas that currently lack it
- Further maximizes benefit of existing infrastructure

BRT & Other Cost-Effective Transit



Deploy new lower-cost transit systems that connect Activity Centers and/or major rail stations.

- Particularly in places that are unlikely to be serviced by rail.
- Can be implemented on arterial roads or on limited-access highways.
- Potentially beneficial synergies when combined with express tolling
 - Revenue
 - Free-flowing capacity

Express Toll Lanes



Use Tolling and Pricing to Manage Congestion and Raise Revenue

- Particularly for new capacity
- On existing capacity when feasible
- Promote seamless tolled systems
- Provide high-quality transit, particularly BRT

Daniel Sonenklar, dsonenklar@mwkog.org

John Swanson, jswanson@mwkog.org

www.mwkog.org/transportation/priorities