

# FY 2020 DC TRANSPORTATION ALTERNATIVES PROGRAM PROJECTS

---

John Swanson  
TPB Transportation Planner

TPB Presentation  
July 24, 2019



National Capital Region  
Transportation Planning Board

Agenda Item #10

# Process

---

- A portion of the federal Transportation Set-Aside Alternatives (TA) Program is sub-allocated to the TPB for project selection in D.C.
- Three DC applicant funding requests were received totaling less than the DC sub-allocation of TA funding
- Staff recommends full funding of all three projects

# Project Recommendations

Project	Sponsor	Project Advocate	Total Cost	TAP Funding Request (80%)	Recommendation
Prather's Alley Safety Improvements	DDOT	Mount Vernon Triangle Community Improvement District	\$169,600	\$135,680	\$135,680
Protected Mobility Lanes on M Street, SE	DDOT	Capitol Riverfront Business Improvement District	\$150,000	\$120,000	\$120,000
Union Station Masonry Restoration Project	DDOT	Union Station Redevelopment Corporation	\$549,182	\$440,000	\$440,000



# M Street Mobility Lane



# M Street Mobility Lane

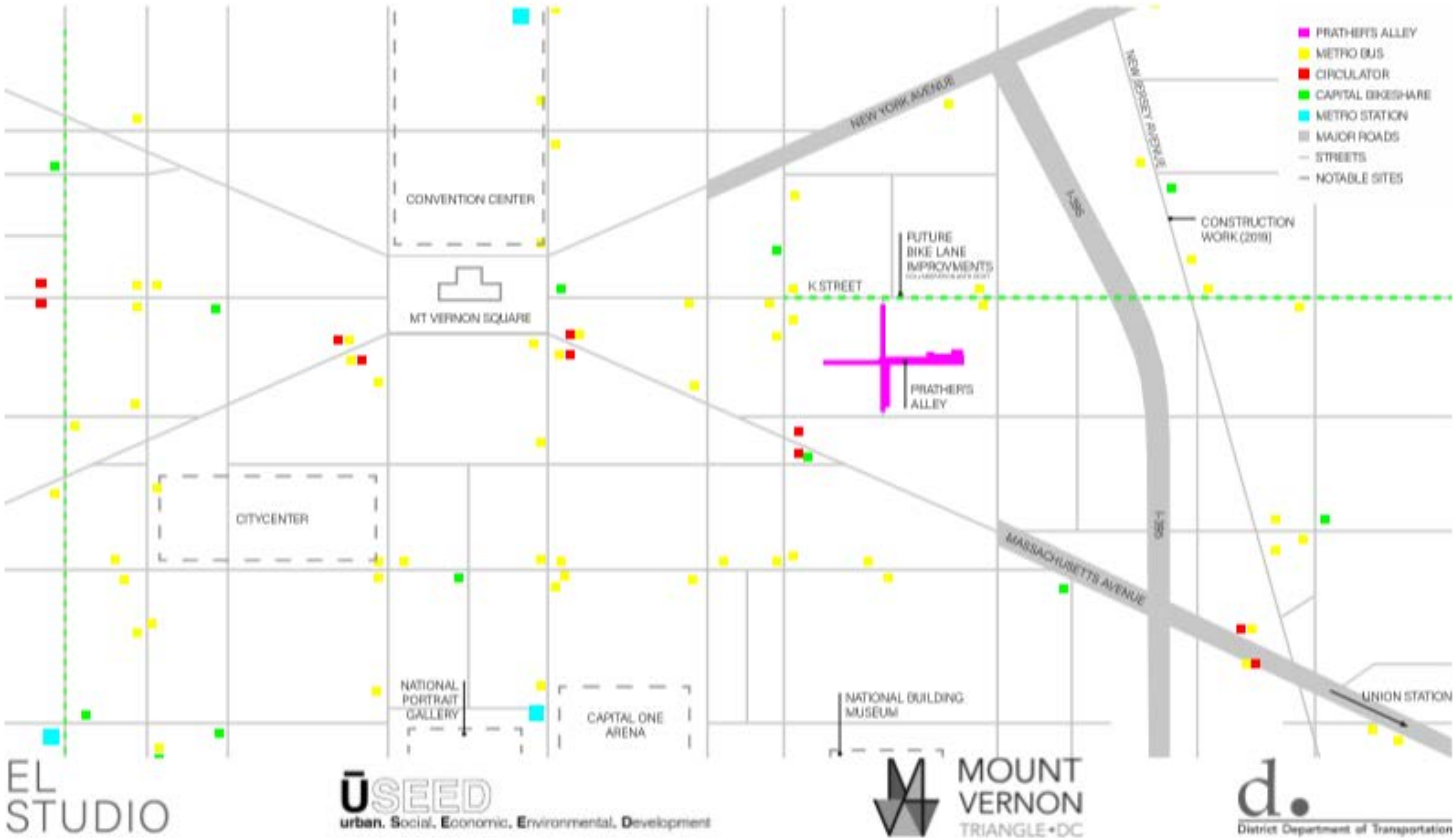


- Increase micromobility connectivity across the Capitol Riverfront neighborhood and the overall District
- The project builds on the District’s Vision Zero and sustainability goals by providing protected mobility lanes on M Street
- A major east-west connection in Capitol Riverfront that links Nationals Park, Audi Field and the Navy Yard/Ballpark Metro station to the Barracks Row/Navy Yard area

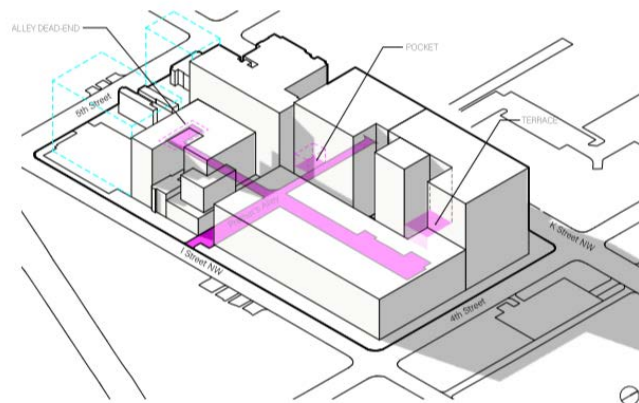


# Prather's Alley Safety Improvements

## PRATHER'S ALLEY NON-MOTORIZED SAFE ROUTES



# Prather's Alley Safety Improvements

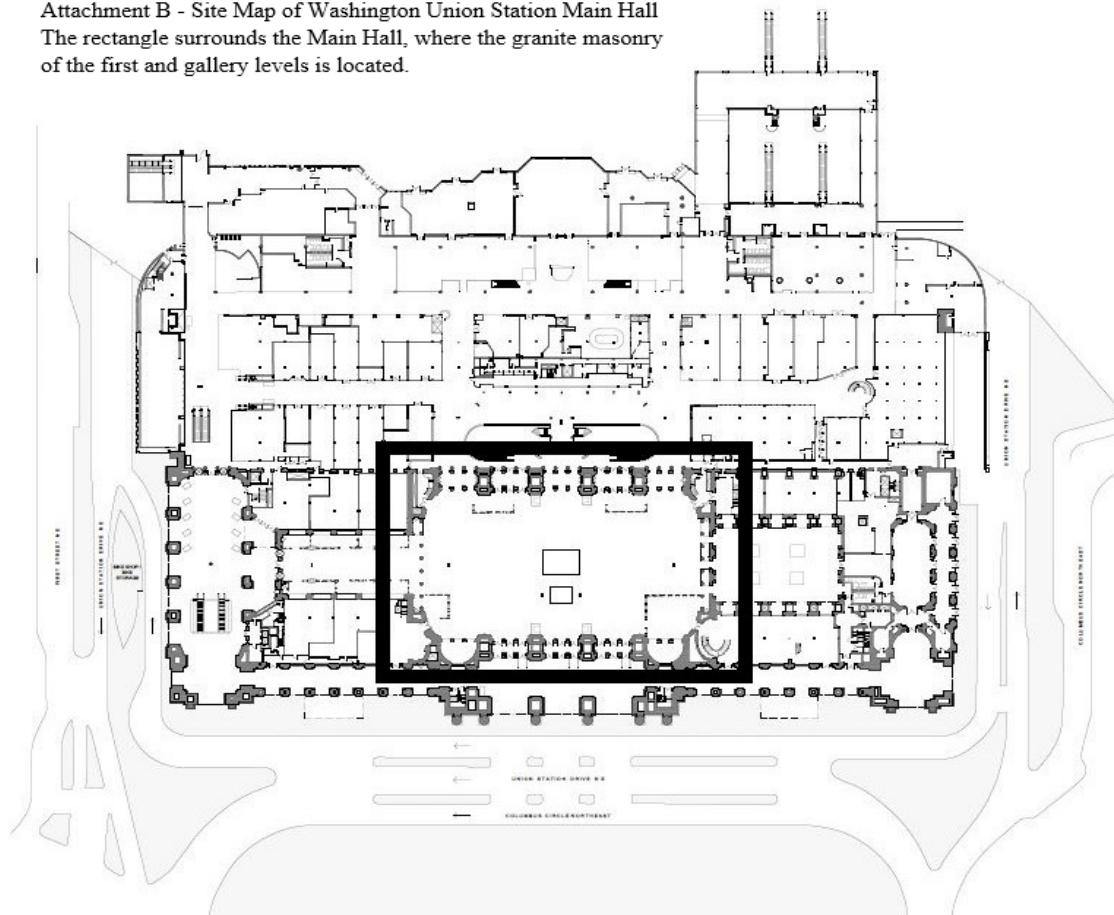


- Mount Vernon Triangle Community Improvement District with EL Studio and urbanSEED, conducted a first use study of Prather's Alley in September 2018
- This project will focus on traffic calming devices and speed reduction mechanisms through the inclusion of signage and proactive design controls



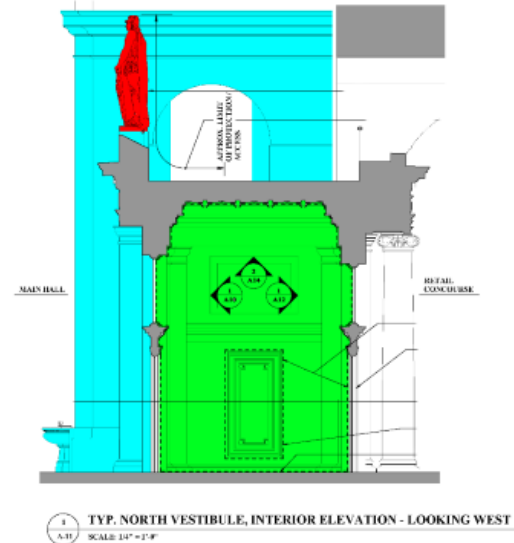
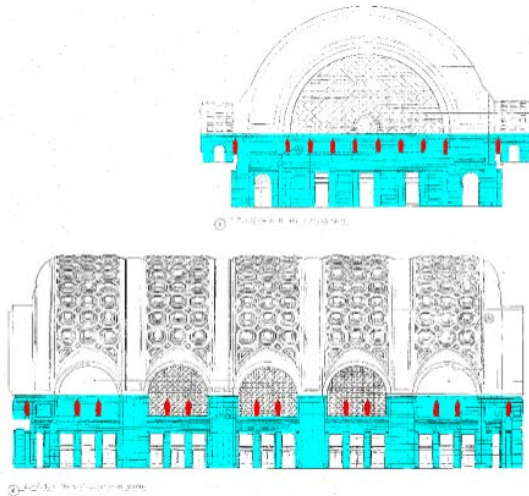
# Union Station Front Portico Roman Legionnaires & Vestibules Restoration

Attachment B - Site Map of Washington Union Station Main Hall  
The rectangle surrounds the Main Hall, where the granite masonry of the first and gallery levels is located.





# Union Station Front Portico Roman Legionnaires & Vestibules Restoration



- The Main Hall is accessed by most of the approximately 100,000 transit users and pedestrians that travel through Union Station daily
- Currently, the masonry is in need of cleaning and conservation, which has not been done since the station's restoration in the late 1980s



# Next Steps

---

- Recommend approval of TA Set-Aside funding for these three projects
- Approve R3-2020

**John Swanson**

(202) 962-3760

[jswanson@mwcog.org](mailto:jswanson@mwcog.org)

**[MWCOG.ORG/TPB](http://MWCOG.ORG/TPB)**

---

777 North Capitol Street NE, Suite 300  
Washington, DC 20002



National Capital Region  
**Transportation Planning Board**