

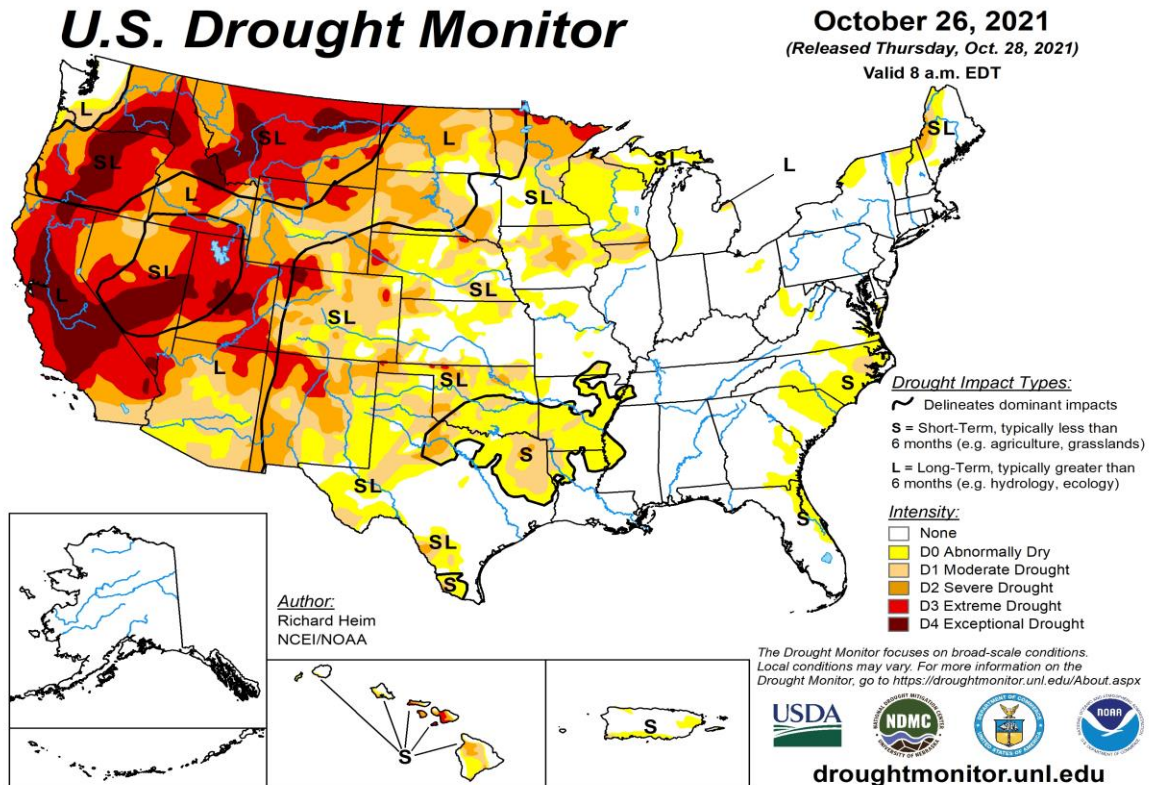
Regional Drought and Water Supply Status October 2021

Summary of Current Conditions - As of October 28, 2021

U.S. Drought Monitor

The latest U.S. Drought monitor released on October 28 indicates that the COG region is free of drought.

Source: <https://droughtmonitor.unl.edu/>



Drought Stage - Normal

The current drought stage as defined in [COG's water supply and drought response awareness plan \(the Plan\)](#) is Normal in the COG region. COG's Plan focuses on tracking and responding to drought conditions as it relates to regional water supply. The western portion of the Potomac Basin is experiencing abnormal dryness and a small portion of moderate drought.

Drought Stages VADEQ and MDE - Normal

COG jurisdictions that are monitored by the Virginia Department of Environmental Quality ([VADEQ](#)) and Maryland Department of the Environment ([MDE](#)) are under a normal status.

Potomac Streamflow - Near median levels

Instantaneous flows readings on October 28 were:

Little Falls -3,570 cfs (median, 2,950 cfs)

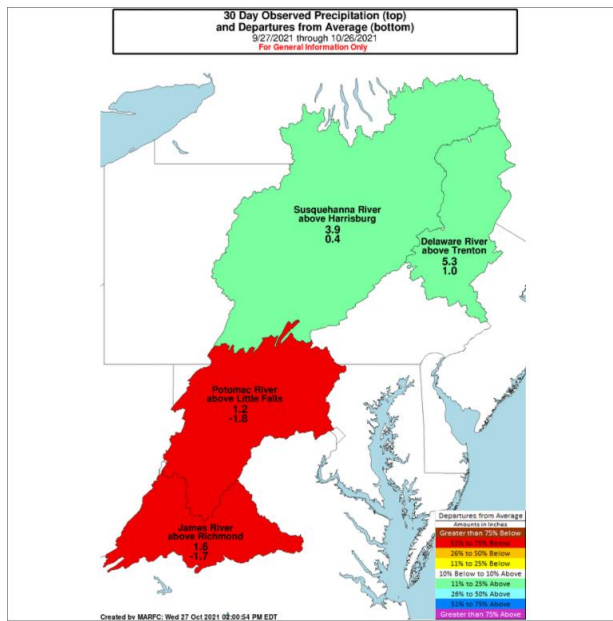
Point of Rocks -2,400 cfs (median, 2,540 cfs)

Source: USGS Little Falls: <https://waterdata.usgs.gov/md/nwis/uv?01646500>

Source: USGS Point of Rocks: <https://waterdata.usgs.gov/md/nwis/uv?01638500>

Potomac Basin Precipitation (as of 10/27/21) – Below Normal

The Potomac Basin received 1.2 inches of rain in the last 30 days, 1.8 inches below normal. Source: Middle Atlantic River Forecast Center <https://www.weather.gov/marfc/BasinPrecipitation30Day>



Groundwater Levels - Normal

Most of the groundwater levels are within a normal range in the COG region.

Source: USGS and Pennsylvania Water Science Center

<https://groundwaterwatch.usgs.gov/statemap.asp?sc=51&sa=VA>

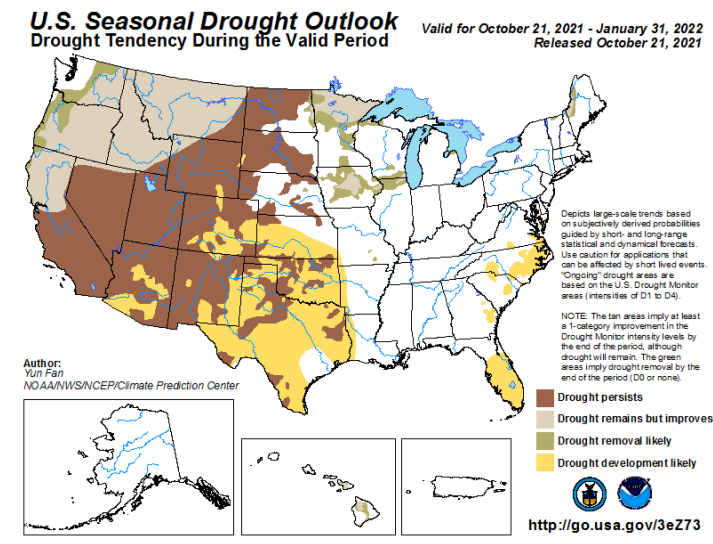
<https://waterdata.usgs.gov/md/nwis/current/?type=gw>

<https://pa.water.usgs.gov/apps/potomac/>

Drought Outlook - Normal

The latest U.S. Seasonal Outlook released on October 21 indicates that drought is not expected in the COG region over the next three months. Source:

http://www.cpc.ncep.noaa.gov/products/expert_assessment/sdo_summary.php



Reservoir Levels - Normal

Drinking water reservoirs at Jennings Randolph and Little Seneca are full.

Source: <http://www.nab-wc.usace.army.mil/nab/potopub.html>

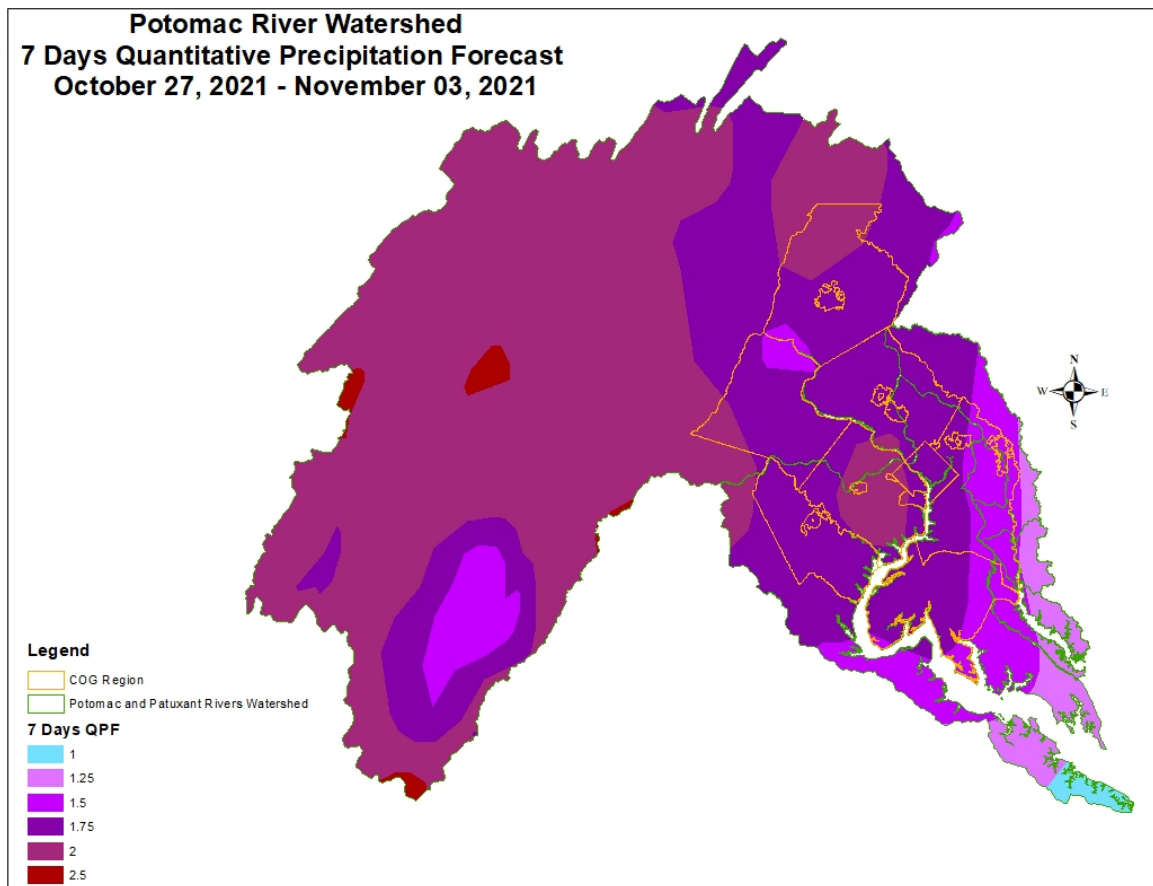
As of the October 2021 report, there is a below normal probability of releases from the Washington metropolitan area's back-up water supply reservoirs for the remainder of the 2021 fall season. Generally, the use of Jennings Randolph and Little Seneca reservoirs is triggered by low flows brought about by a combination of low precipitation and low groundwater levels. There is less than 1 percent conditional probability that natural Potomac flow will drop below 600 to 700 million gallons per day (MGD) at Little Falls through December 31 of this year. Source: ICPRB

<https://www.potomacriver.org/focus-areas/water-resources-and-drinking-water/cooperative-water-supply-operations-on-the-potomac/drought-monitoring-and-operations/water-supply-outlook-status/>

7 Day Precipitation Forecast

The 7 Day quantitative precipitation forecast calls for roughly 1.25 to 2.00 inches of rain in the COG region.

Source: NOAA and COG: <http://www.wpc.ncep.noaa.gov/qpf/day1-7.shtml>



For additional information please visit COG's Water Supply and Drought website:

<https://www.mwcog.org/drought>