


Washington Metropolitan Area Transit Authority

## ConnectGreaterWashington: The 2040 Regional Transit System Plan


TPB Regional Transit Subcommittee  
January 27, 2015




ConnectGreaterWashington:  
The 2040 Regional Transit System Plan

## ConnectGreaterWashington Context


- Current: Transit System Expansion Plan ('99)
- Compact enables development and adoption of a Mass Transit Plan for the "transit zone"
- Stats:
  - 19% Complete/Under Construction
  - 18% TIP
  - 60% Unfunded



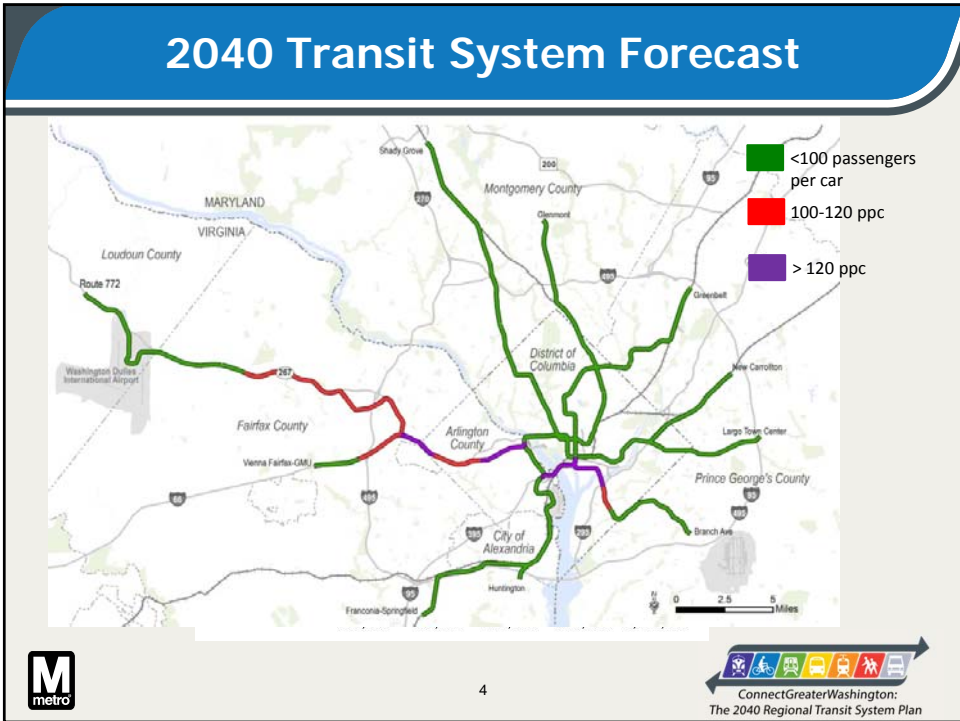
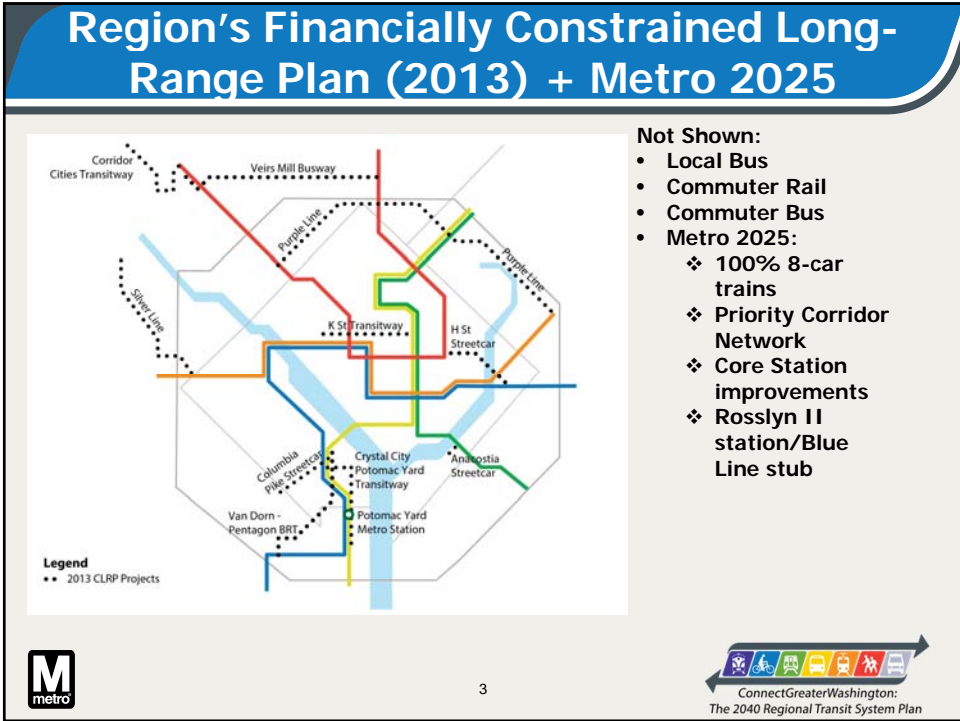
Transit System Expansion Plan

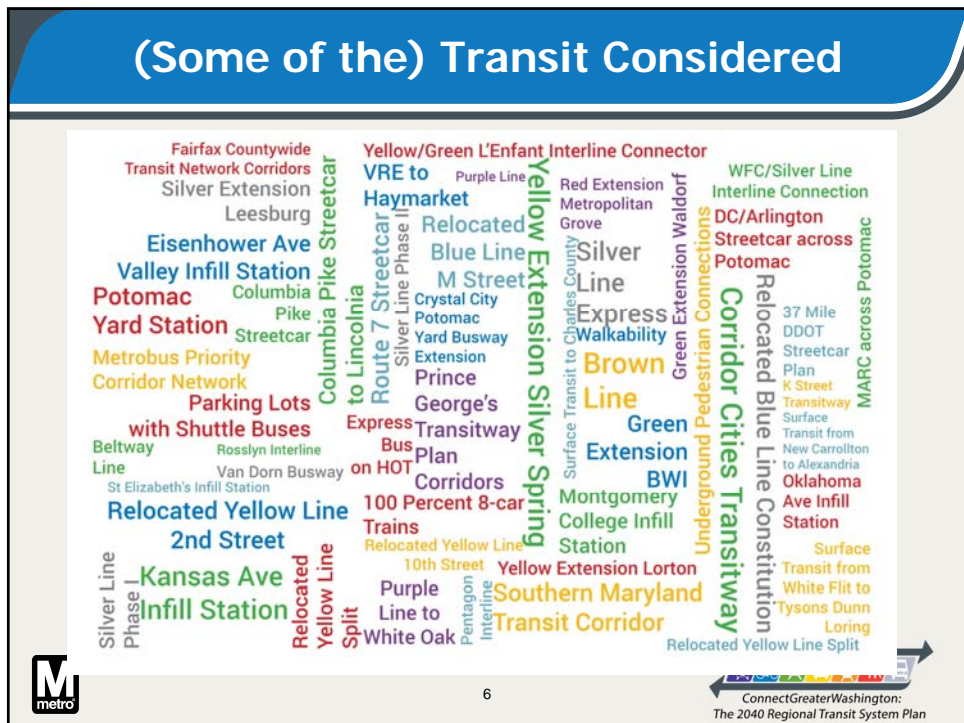
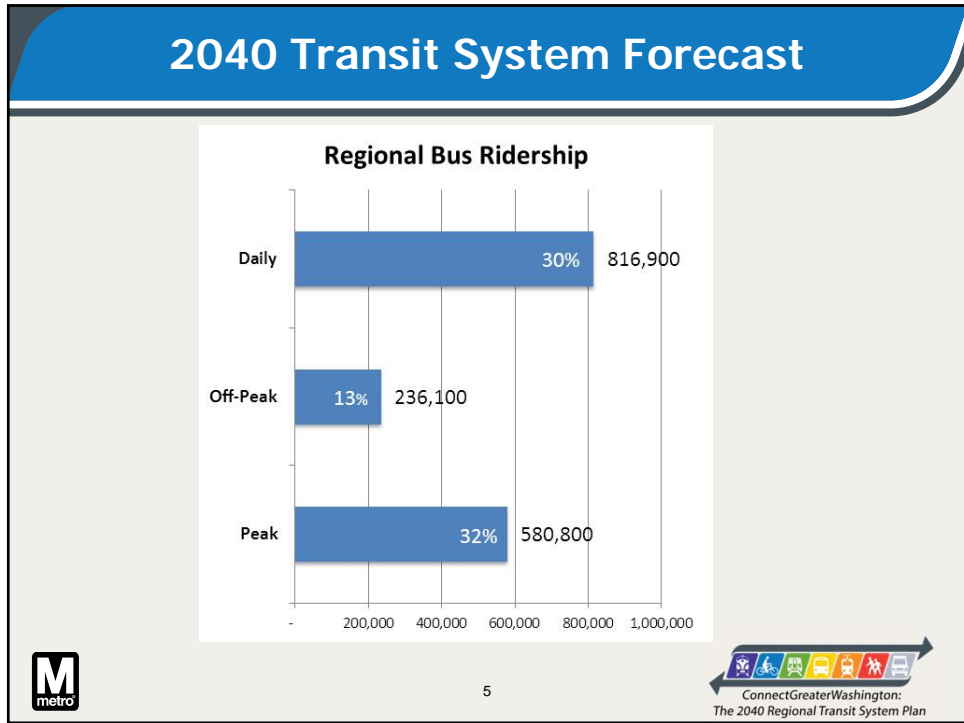


2



ConnectGreaterWashington:  
The 2040 Regional Transit System Plan

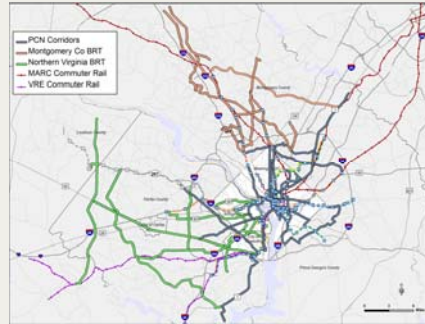




## (Some of the) Transit Considered



Streetcar Proposals (2011)



PCN/BRT/Enhanced Bus (2011)



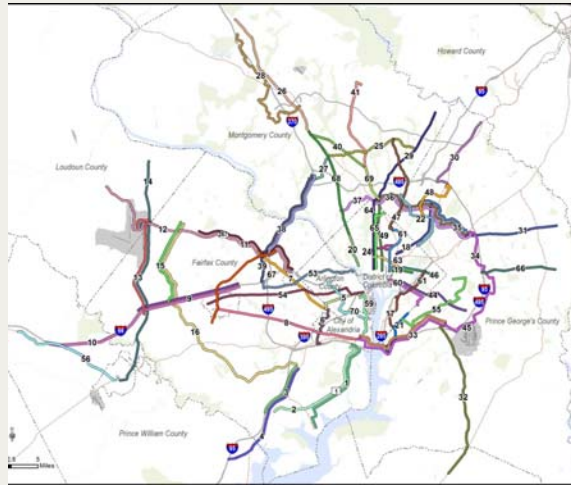
## Matching Modes with Density, Ridership, and Activity Centers

Mode Local Examples	Right-of-Way	Corridor/Station Area Land Use Intensity <sup>1</sup>						Capacity <sup>2</sup>		Distance		Cost <sup>3</sup>	
		Local Mix-Use Examples	Suburbs	Central Suburbia/Urban Core	Local Mix-Use Examples	Suburbs	Central Suburbia/Urban Core	Passengers per Vehicle	Corridor (passengers per hour per direction)	Station/Stop Spacing (average)	Passenger Trip Length (average)	Capital Cost	Operating Cost (per passenger mile)
Commuter Rail VRE MARC	Exclusive	+1 - Stafford County 11 - Silver Spring	2-4	+4	+1 - Stafford County 140 - Clarendon Plaza	N/A Typically residential or Park and Ride	N/A Driven by corridor and terminal stations	90-190 seated	2,000-40,000	2-10 miles	24 miles	\$ - \$\$\$	€
Heavy Rail Metrolink	Exclusive	1 - Branch Ave Metro 27 - Columbia Heights Metro	12-18	+18	1 - Addison Rd Metro 300 - Farnaght West Metro	25-35	>35	65-75 seated 700-1200 total (Metrolink)	25,000 (Metrolink)	0.5-1 mile	3 miles	\$\$ - \$\$\$	€
Light Rail Purple Line (Planned)	Exclusive/Shared	6 - Purple Line Corridor	3-7	+7	12 - Purple Line Corridor	8-18	+18	40-60 seated 180 total	3,600	0.75-1.5 miles	5 miles	\$\$ - \$\$\$	€
Modern Streetcar Columbia Pike DC Streetcar (under construction)	Exclusive/Shared	13 - Columbia Pike 19 - H St NE	3-6	+6	30 - Columbia Pike 50 - H St NE	5-15	+15	35-50 seated 120 total	1,200	0.5 mile	4 miles	\$	€
Commuter Bus MTA Commuter Bus WGT - Covington Loudoun County Transit Private Operators	Exclusive/Shared	N/A (Long distance point-to-point service)						45-65 seated	100-1,000	Varied, Stops Customized at Route Start and End	20-60 miles	\$	€
Bus Rapid Transit Commuter Cities Transitway (planned) CCPY Transitway (under construction)	Exclusive	2 - Corridor Cities Transitway 11 - CCPY Transitway	3-6	+6	8 - Corridor Cities Transitway 44 - CCPY Transitway	8-18	+18	60 seated 95-105 total	1,900-2,100	0.5 mile	5 miles	\$\$	€
Enhanced Bus Metrolink MetroExtra Heavy Corridor Network (planned)	Shared	3 - various suburban PCN lines 26 - 16th St NWB line	3-6	+6	3 - various suburban PCN lines 108 - 16th St NWB line	8-18	+18	40-45 seated 60-70 total	1,200-1,400	0.25-0.5 mile	4 miles	\$	€



## Prioritize Regionally Significant Surface Corridors (and action transit priority)

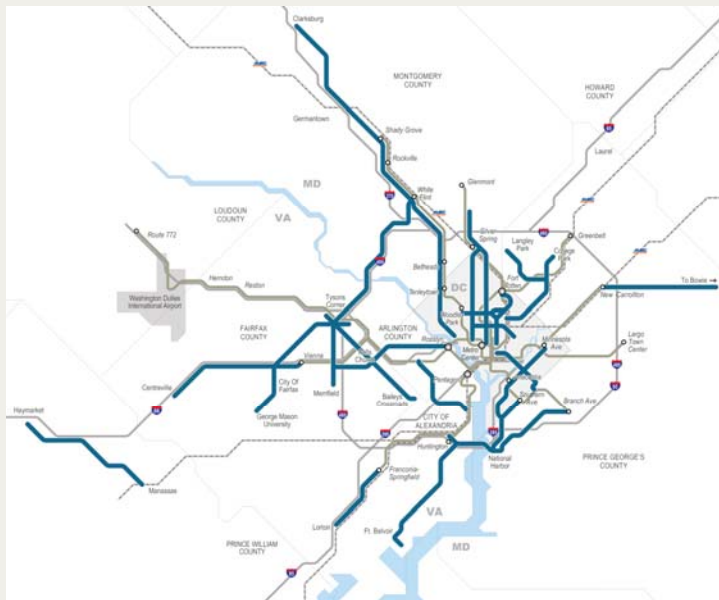
- Employment and household density
- Ridership
- Connectivity to RACs



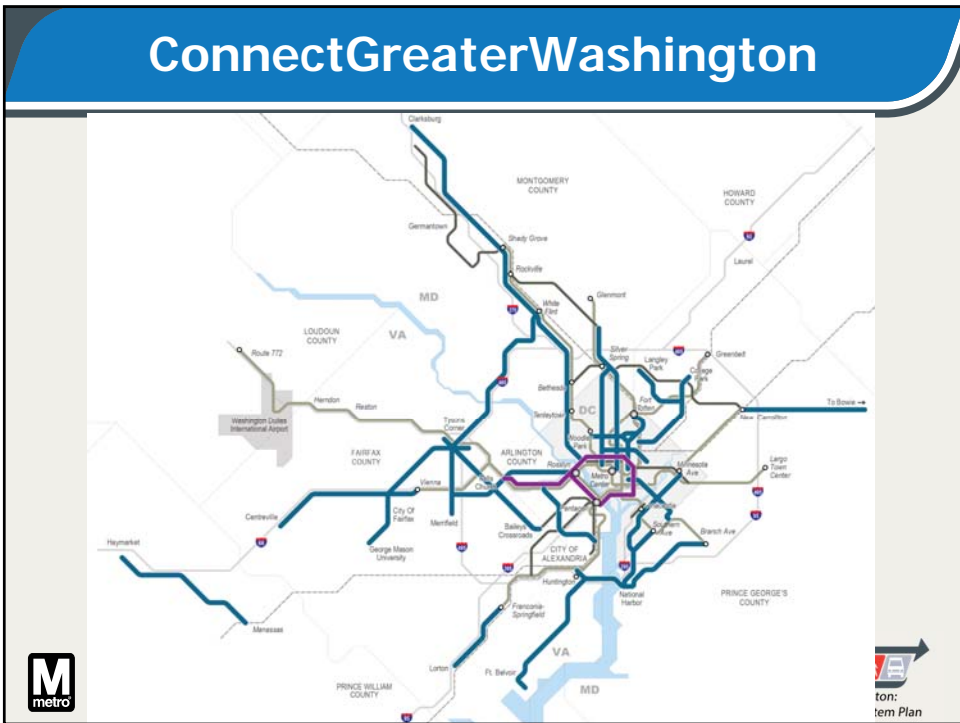
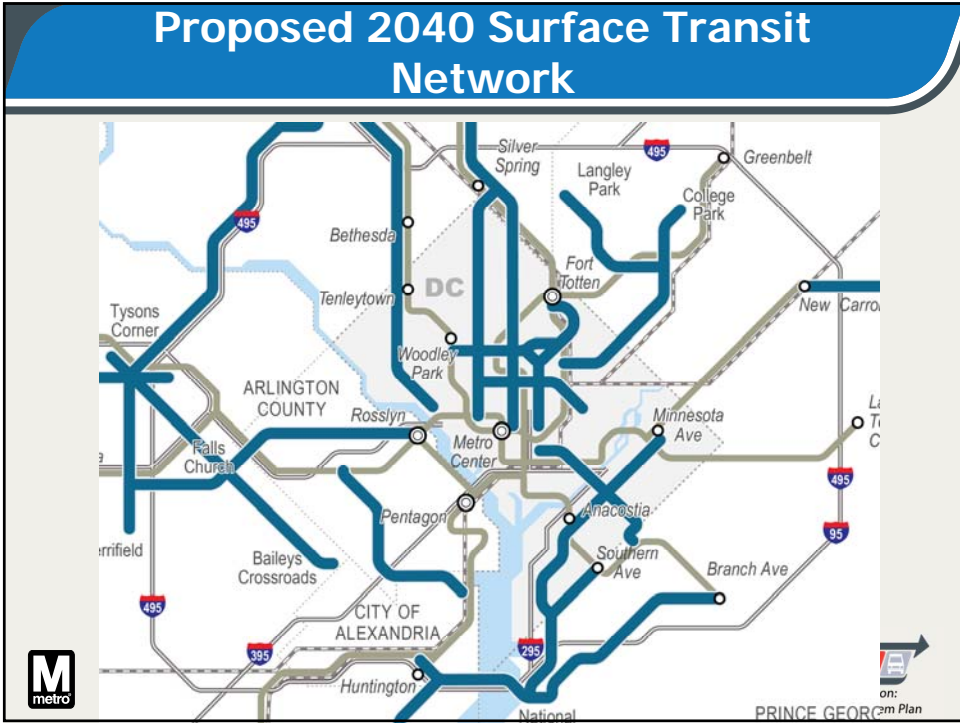
9



## Proposed 2040 Surface Transit Network







## Next Steps

- Finalize expansion threshold by mode
- Finalize land use alternatives – counter scenarios to 2040 transit expansion
- Package ConnectGreaterWashington to enable a robust, open, multi-modal conversation in the region



13

