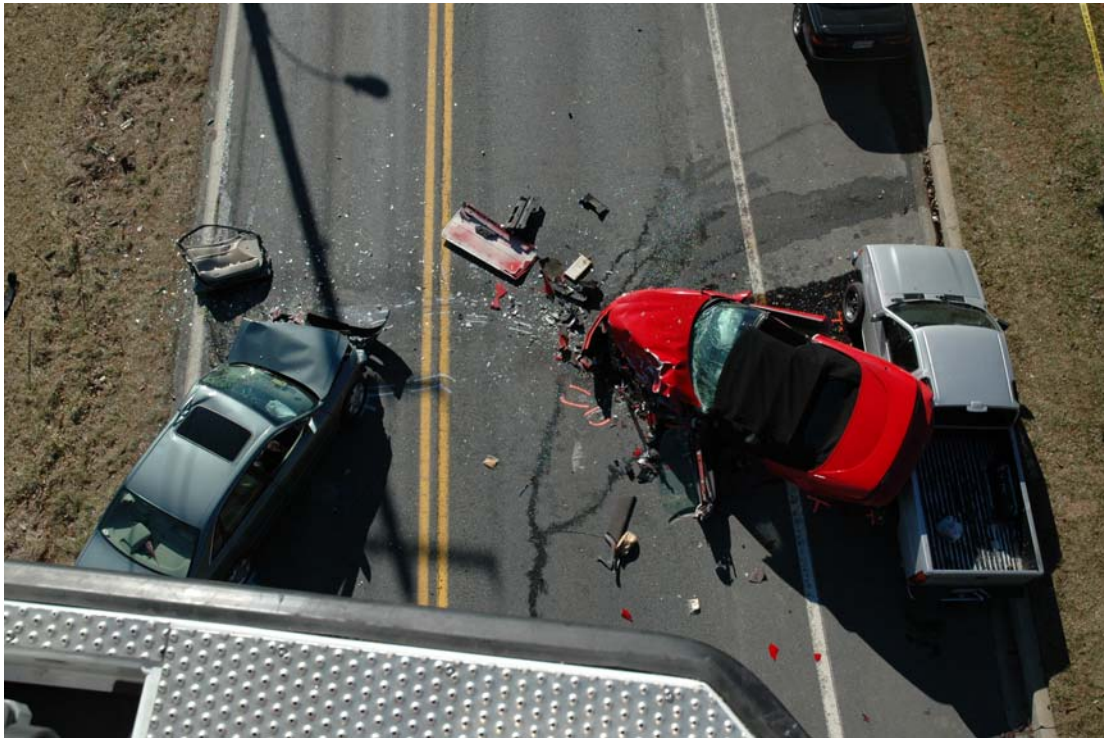




How Safe Are Our Roads?

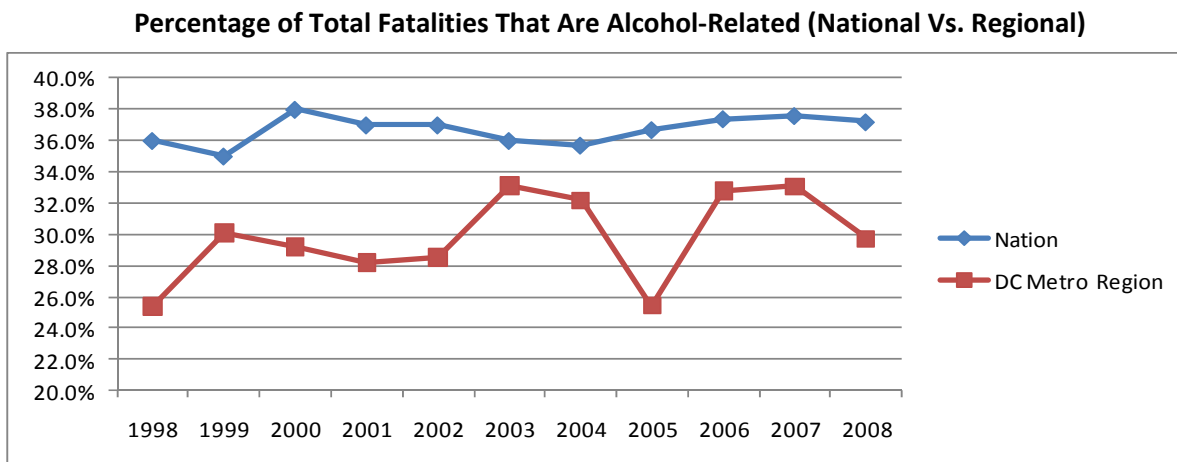
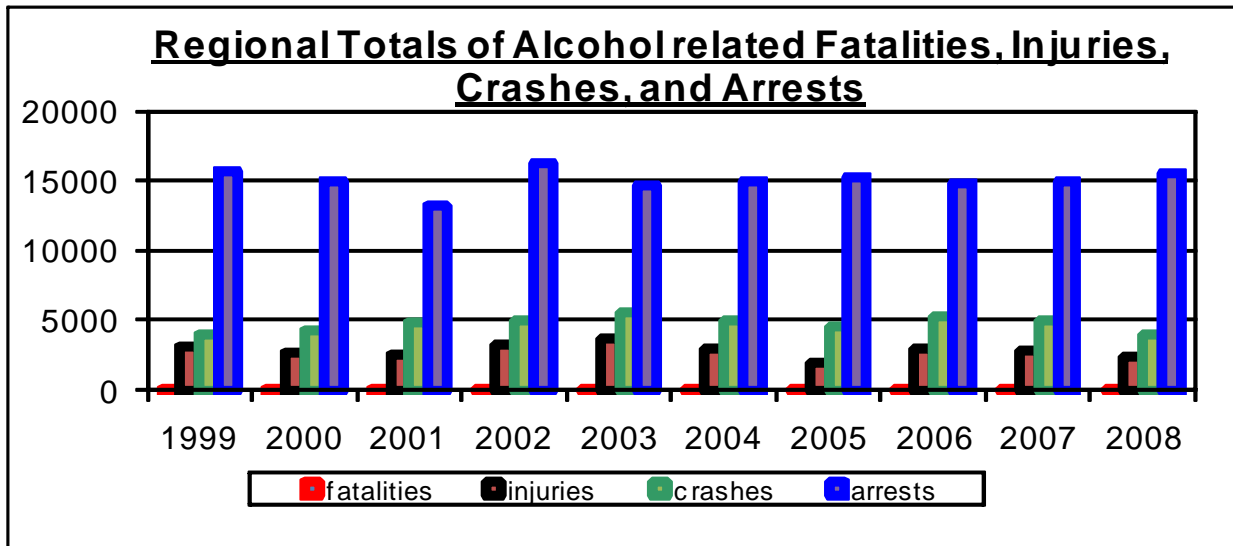


Annual Data Report on the Impact of Drunk Driving on
Road Safety in the Washington D.C. Metropolitan Region
December 2009



Metropolitan Washington
Council of Governments

Decreased Drunk Driving in the Metropolitan Washington Region Counters National Trend



*Source, National Highway Traffic Safety Administration

The Washington Metropolitan area in 2008 has continued its trend in declining numbers of alcohol-related traffic fatalities, injuries and crashes. Meanwhile, the number of local arrests for driving under the influence (DUI) or driving while intoxicated (DWI) increased by 5.0% in 2008. The data upholds research showing the value of both highly-visible law enforcement deterrent efforts like the region’s Checkpoint Strikeforce campaign as well as increased public attention to the threat of drunk driving.



WRAP



How Safe Are Our Roads? - 2008 Overview

Findings in the 2009 report include:

FATALITIES...Local alcohol and or drug-related traffic deaths *decreased* by 20.7% between 2007 and 2008. This is a drastic magnification of last year's 2.5% decrease in such deaths in the Greater Washington Area as well as the 9.7% decrease at the National level.

CRASHES...Area traffic crashes attributed to alcohol and or drugs *decreased* by more than 21.3% between 2007 and 2008. This continues the previous year's (2007) 5.8% decrease in such crashes in the Greater Washington Area.

INJURIES...Local alcohol and or drug-related traffic injuries also *decreased* by 16.8% between 2007 and 2008.

ARRESTS...Local arrests for either driving under the influence (DUI) or driving while intoxicated (DWI) *increased* by 5% between 2007 and 2008.

Of the Washington metropolitan area's 310 total traffic fatalities last year, 29.7% (92) of these roadway deaths were alcohol and or drug-related. 2008 national statistics (National Highway Traffic Safety Administration or NHTSA) show that 37% of total U.S. vehicular fatalities were reported as alcohol / drug-related.

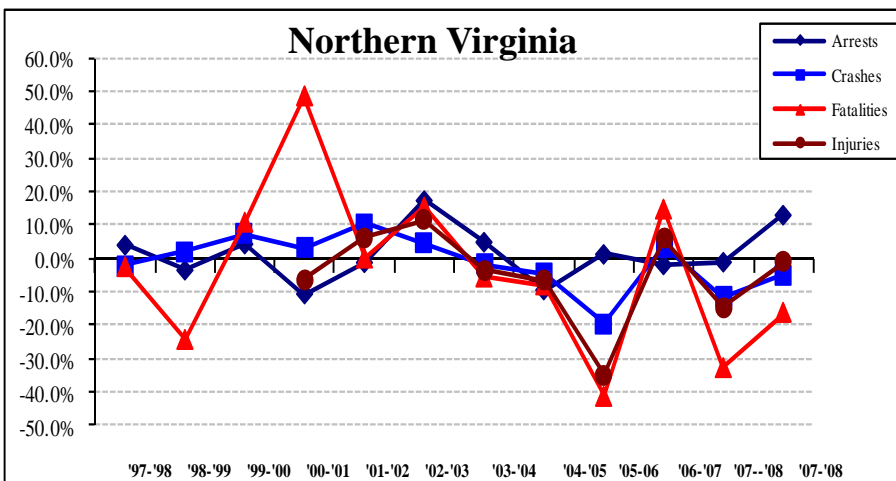
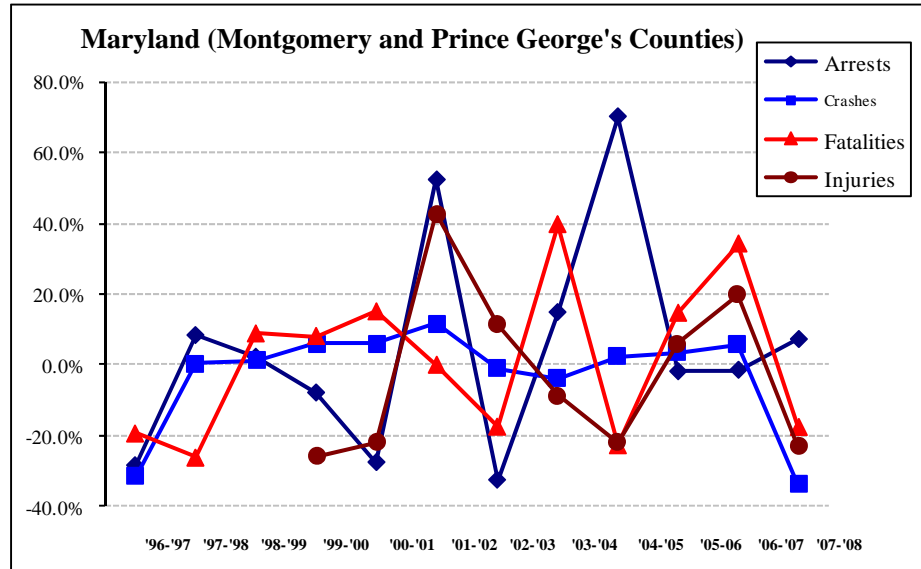
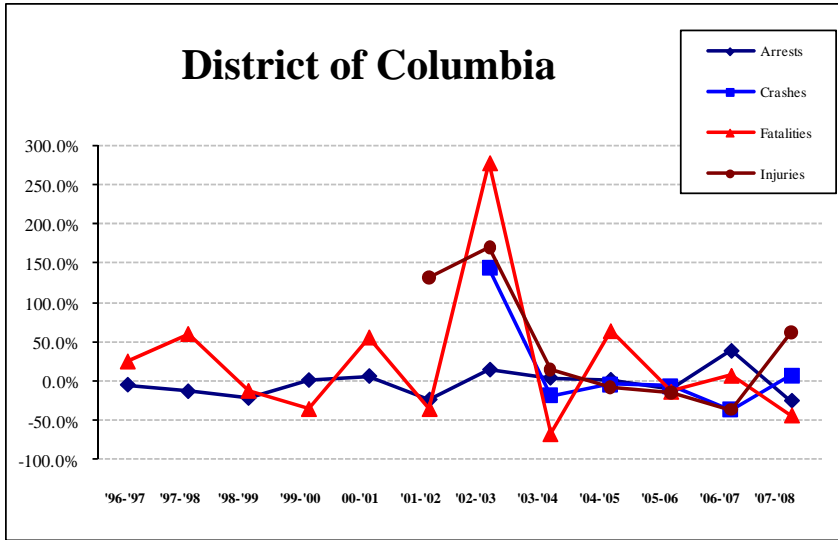
While WRAP and COG are pleased to note the effectiveness of high-profile law enforcement deployments like local sobriety checkpoints and saturation patrols – and the voluntary compliance gained from the same – as a principal catalyst in the Greater Washington Area's recent downward DUI numbers, they also stress the need to resist complacency. Because someone is still arrested for drunk driving every 33-minutes in the Washington metropolitan area, vigilance in combating this completely preventable killer is still needed.

Background

Data compiled in this report comes from national, state, and local sources including the U.S. Census Bureau, National Highway Traffic Safety Administration (NHTSA), and Virginia and Maryland Departments of Transportation. Primary data was collected from the local police departments of each jurisdiction.

It should be noted that the jurisdictional data in this report does not always include State Police data. The State Police in Maryland and Virginia are charged with enforcing traffic laws on state highways and interstate expressways; inclusion of this data would likely increase the number of incidents in all categories. It is possible that some jurisdictional data may include State Police figures because local police often respond to highway incidents when State Police are unavailable. In some jurisdictions, the data reported were provided by the state, and most likely include state police data.

Sub Regional Trends



Northern Virginia

2008 Fatalities



Alcohol Related Traffic Fatalities by Jurisdiction, 1998-2008

	1998	2005	2006	2007	2008	Percent Change	
						2007-2008	1998-2008
District of Columbia	16	18	15	16	9	-43.8%	-43.8%
Maryland							
<i>State Total</i>	-	235	268	178	152	-14.6%	n/a*
Montgomery County	8	9	17	13	14	7.7%	75.0%
Prince George's County	26	32	30	50	38	-24.0%	46.2%
MD Regional Total	34	41	47	63	52	-17.5%	52.9%
Virginia							
<i>State Total</i>	-	322	374	378	354	-6.3%	n/a*
Arlington County	1	0	1	3	3	0.0%	200.0%
Fairfax County	13	20	24	19	13	-31.6%	0.0%
Loudoun County	7	3	5	0	5	n/a	-28.6%
Prince William County	5	4	22	12	9	-25.0%	80.0%
City of Alexandria	2	0	0	1	1	0.0%	-50.0%
City of Fairfax	0	0	3	1	0	-100.0%	0.0%
City of Falls Church	0	0	0	0	0	n/a	0.0%
City of Manassas	0	0	0	1	0	-100.0%	0.0%
City of Manassas Park	0	0	0	0	0	0.0%	0.0%
Northern Virginia Total	28	27	55	37	31	-16.2%	10.7%
DC Metro Regional Total	78	86	117	116	92	-20.7%	17.9%
National Parks in Region	--	3	2	0	0	0.0%	0.0%
Regional Total Adjusted	78	89	119	116	92	-20.7%	17.9%
National	14,899	15,985	15,970	15,534	13,846	-10.9%	-7.1%

* 1998 data is not available for comparison

Total Traffic Fatalities by Jurisdiction 1998-2008

	1998	2005	2006	2007	2008	Percent Change	
						2007-2008	1998-2008
District of Columbia	59	49	41	54	40	-25.9%	-32.2%
Maryland							
<i>State Total</i>	-	614	651	614	591	-3.7%	-10.6%
Montgomery County	46	38	57	49	52	6.1%	13.0%
Prince George's County	111	134	111	126	129	2.4%	16.2%
MD Regional Total	157	172	168	175	181	3.4%	15.3%
Virginia							
<i>State Total</i>	-	947	797	1,027	821	-0.8%	-10.2%
Arlington County	3	4	4	6	8	33.3%	166.7%
Fairfax County	45	61	67	48	29	-39.6%	-35.6%
Loudoun County	21	20	19	22	11	-50.0%	-47.6%
Prince William County	19	23	46	27	24	-11.1%	26.3%
City of Alexandria	3	2	1	5	3	-40.0%	0.0%
City of Fairfax	0	2	3	2	0	-100.0%	n/a
City of Falls Church	0	0	0	0	0	0.0%	n/a
City of Manassas	0	3	1	3	1	-66.7%	n/a
City of Manassas Park	0	0	0	0	0	0.0%	n/a
Northern Virginia Total	91	115	141	113	76	-32.7%	-16.5%
DC Metro Regional Total	307	336	350	342	297	-13.2%	-3.3%
National Parks in Region	--	14	13	9	13	44.4%	-35.0%
Regional Total Adjusted	--	350	363	351	310	-11.7%	-10.1%
National	41,501	43,510	42,642	41,259	37,261	-9.7%	-10.2%



Injuries

Motor Vehicle Injuries in 2008

	Total Injuries	Alcohol Related Injuries	Percentage of Total Injuries that were Alcohol Related	Percent Change Alcohol Related Injuries, 2007-2008
District of Columbia	6,876	96	1.4%	-63.6%
Maryland				
Montgomery County	6,624	405	6.1%	-16.3%
Prince George's County	7,099	572	8.1%	-27.3%
MD Regional Total	13,723	977	7.1%	-23.1%
Virginia				
Arlington County	1,288	146	11.3%	15.0%
Fairfax County	7,964	573	7.2%	-11.6%
Loudoun County	1,717	140	8.2%	418.5%
Prince William County	2,717	263	9.7%	-8.7%
City of Alexandria	1,492	89	6.0%	-22.6%
City of Fairfax	201	8	4.0%	-63.6%
City of Falls Church	141	2	1.4%	n/a
City of Manassas	270	15	5.6%	-6.3%
City of Manassas Park	20	1	5.0%	-83.3%
Northern Virginia Total	18,810	1,237	7.8%	-1.0%
DC Metro Regional Total	36,409	2,310	6.3%	-17.0%
National Parks in Region	669	42	6.3%	-2.3%
Regional Total Adjusted	37,078	2,352	6.3%	-16.8%



The Checkpoint Strikeforce Campaign stopped over 400,000 drivers last year at sobriety checkpoints and saturation patrols in the multi-state area of Delaware, The District of Columbia, Kentucky, Maryland, North Carolina, Virginia and West Virginia.

Total Traffic Injuries by Jurisdiction, 1998-2008

	1998	2005	2006	2007	2008	Percent Change	
						2007-2008	1998-2008
District of Columbia	-	5,007	4,265	4,070	6,876	61.2%	-53.9%
Maryland							
Montgomery County	8,740	6,870	6,759	6,905	6,624	-4.1%	-18.7%
Prince George's County	11,113	5,792	5,595	7,771	7,099	-8.6%	-28.2%
MD Regional Total	19,853	12,662	12,354	14,676	13,723	-6.5%	-23.9%
Virginia							
Arlington County	1,929	1,220	1,374	1,201	1,288	7.2%	-34.1%
Fairfax County	8,333	6,582	8,537	8,019	7,964	-0.7%	-6.6%
Loudoun County	1,102	1,206	1,711	631	1,717	172.1%	52.1%
Prince William County	2,922	2,586	3,341	2,624	2,717	3.5%	-4.3%
City of Alexandria	1,323	853	1,317	1,403	1,492	6.3%	8.1%
City of Fairfax	389	205	315	241	201	-16.6%	-45.4%
City of Falls Church	128	180	240	40	141	252.5%	25.9%
City of Manassas	350	403	448	288	270	-6.3%	-26.0%
City of Manassas Park	41	23	43	18	20	11.1%	0.0%
Northern Virginia Total	16,517	13,258	17,326	14,465	15,810	9.3%	-12.4%
DC Metro Regional Total	36,370*	30,927	33,945	33,211	36,409	9.6%	4.9%
National Parks in Region	--	703	736	675	669	0.9%	-17.9
Regional Total Adjusted	--	31,630	34,681	33,886	37,078	9.4%	1.1%

Crashes

Total Traffic Crashes by Jurisdiction, 1998-2008

	1998	2004	2005	2006	2007	2008	Percent Change	
							2007-2008	1998-2008#^
District of Columbia	--	18,490	17,717	16,478	15,100	16,147	6.9%	-11.6%
Maryland								
Montgomery County	12,811	13,053	12,235	12,076	12,460	11,980	-3.9%	-6.5%
Prince George's County	14,430	15,901	16,349	15,863	15,060	14,266	-5.3%	-1.1%
MD Regional Total	27,241	28,954	28,584	27,939	27,520	26,246	-4.6%	-3.7%
Virginia								
Arlington County	3,324	3,584	3,383	2,984	2,649	2,596	-2.0%	-21.9%
Fairfax County	16,476	18,728	18,363	18,254	17,152	16,318	-4.9%	-1.0%
Loudoun County	2,168	3,824	5,718	4,234	5,720	3,828	-33.1%	76.6%
Prince William County	4,595	5,492	5,648	7,132	5,852	5,520	-5.7%	20.1%
City of Alexandria	2,397	2,274	2,193	2,019	1,947	1,868	-4.1%	-22.1%
City of Fairfax	756	1,124	1,137	926	817	616	-24.6%	-18.5%
City of Falls Church	265	283	196	240	243	177	-27.2%	-33.2%
City of Manassas	733	923	948	931	725	622	-14.2%	-15.1%
City of Manassas Park	88	114	136	111	73	65	-11.0%	-26.1%
Northern Virginia Total	30,802	36,346	37,722	36,831	35,178	31,610	-10.1%	2.6%
	58,043							
DC Metro Regional Total *	--	83,790	84,023	81,248	77,798	74,003	-4.9%	27.5%
National Parks in Region	--	3,186	2,896	2,945	2,669	2,568	-3.8%	-9.5%
Regional Total Adjusted	12,811	86,976	86,919	84,193	80,467	76,571	-4.8%	14.8%



Public outreach to schools can have a large impact in reducing the amount of crashes that occur on the nation's roadways each year.

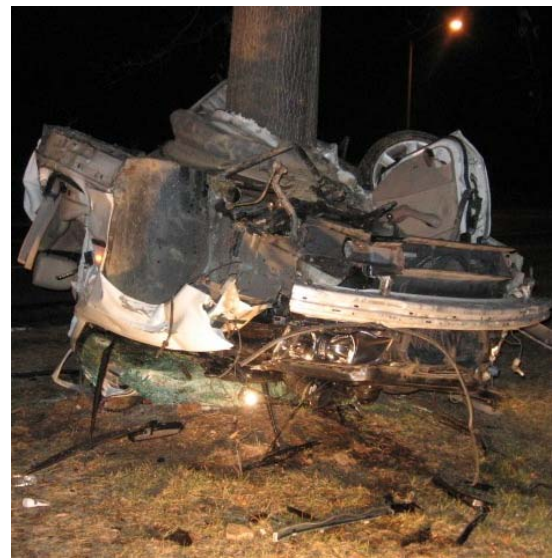
*Regional totals do not include jurisdictions with missing data.

#District of Columbia Percent Change 2001-2008

^National Parks and Regional Totals Adjusted Percent Change 2000-2008

Percentage of all Traffic Crashes that were Alcohol Related, 1996-2007

	1998	2004	2005	2006	2007	2008
District of Columbia	-	3.8%	1.3%	2.5%	1.7%	0.8%
Maryland						
Montgomery County	6.0%	7.7%	8.0%	7.8%	8.0%	5.8%
Prince George's County	7.0%	7.7%	7.5%	8.4%	9.3%	6.3%
MD Regional Total	6.5%	7.7%	7.7%	8.2%	8.7%	6.1%
Virginia						
Arlington County	8.2%	9.0%	6.6%	9.7%	10.6%	9.6%
Fairfax County	5.9%	6.6%	5.1%	6.6%	6.1%	6.3%
Loudoun County	7.2%	6.4%	3.2%	6.0%	3.4%	6.5%
Prince William County	7.7%	8.4%	6.5%	7.2%	8.3%	7.4%
City of Alexandria	5.8%	5.5%	5.1%	5.7%	6.1%	5.6%
City of Fairfax	6.6%	5.2%	3.1%	3.8%	5.9%	4.2%
City of Falls Church	6.8%	6.7%	0.5%	4.6%	1.6%	4.0%
City of Manassas	6.0%	5.5%	9.4%	7.6%	5.7%	7.6%
City of Manassas Park	17.0%	10.5%	9.6%	19.8%	20.5%	9.2%
Northern Virginia Total	6.6%	7.0%	5.2%	6.9%	6.4%	6.7%
DC Metro Regional Total	6.5%	6.5%	5.2%	6.4%	6.3%	5.2%
National Parks in Region	--	3.5%	3.4%	3.4%	4.1%	3.7%
Regional Total Adjusted	--	5.7%	5.2%	6.3%	6.2%	5.2%



Arrests



An impaired driver is arrested every 33 minutes in the Washington Metropolitan Area.

Total Alcohol Related Driving Arrests by Jurisdiction, 1998-2008							
	1998	2005	2006	2007	2008	Percent Change	
						2007-2008	1998-2008
District of Columbia	2,350	1,807	1,600	2,224	1,655	-25.6%	-29.6%
Maryland							
Montgomery County	4,445	3,559	3,714	3,487	3,854	10.5%	-13.3%
Prince George's County	2,321	1,927	1,667	1,814	1,831	0.9%	-21.1%
MD Regional Total	6,766	5,486	5,381	5,301	5,685	7.2%	-16.0%
Virginia							
Arlington County	1,037	574	688	647	677	4.6%	-34.7%
Fairfax County	2,754	3,015	2,769	2,604	3,148	21.7%	14.3%
Loudoun County	220	694	616	690	818	18.6%	271.8%
Prince William County	1,635	1,611	1,794	1,935	2,199	13.6%	34.5%
Alexandria City	394	425	479	567	515	-9.2%	30.7
Fairfax City	325	268	167	184	181	-1.6%	-44.3%
Falls Church City	53	34	54	48	67	39.6%	26.4%
Manassas City	209	219	218	160	110	-31.3%	-47.4%
Manassas Park City	46	110	106	0	60	n/a	30.4%
Northern Virginia Total	6,673	6,950	6,891	6,817	7,715	14.1%	16.5%
DC Metro Regional Total	15,789	14,243	13,872	14,342	15,115	5.4%	-4.3%
National Parks in Region	--	989	974	634	614	-3.2%	36.1%
Regional Total Adjusted	15,789	15,232	14,846	14,976	15,729	5.0%	-0.4%

*Regional totals do not include jurisdictions with missing or pending data.
Source: Jurisdictional contacts, see specific contact in Methodology

Total Alcohol Related Driving Arrests of Juveniles and Adults by Jurisdiction, 1999-2008

	1999			2005			2006			2007			2008		
	≤ 18	>18	Total	≤ 18	>18	Total	≤ 18	>18	Total	≤ 18	>18	Total	≤ 18	> 18 years	Total
District of Columbia			1,807			1,807	--	--	1,600	4	2,220	2,224	6	1,647	1,655
Maryland															
Montgomery County*	285	3,274	3,274	285	3,274	3,559	125	3,589	3,714	48	3,439	3,487	28	3,826	3,854
Prince George's County#	3	1,924	1,924	3	1,924	1,927	4	1,663	1,667	5	1,809	1,814	2	1,829	1,831
MD Regional Total	288	5,198	5,198	288	5,198	5,486	129	5,252	5,381	53	5,248	5,301	30	5,655	5,685
Virginia															
Arlington County	5	0	574	0	574	574	3	685	688	7	640	647			677
Fairfax County	58	28	2,987	28	2,987	3,015	25	2,761	2,786	22	2,564	2,586	25	3,123	3,148
Loudoun County	2	23	671	23	671	694	70	546	616	12	678	690	12	806	818
Prince William County*	19	12	1,599	12	1,599	1,611	27	1,767	1,794	17	1,918	1,935			2,199
Alexandria City	2	0	425	0	425	425	1	478	479	3	564	567	5	510	515
Fairfax City	2	3	265	3	265	268	1	166	167	3	181	184	0	181	181
Falls Church City	0	0	34	0	34	34	2	52	54			48			67
Manassas City	2	2	217	2	217	219	1	217	218	0	160	160	1	109	110
Manassas Park City	1	0	110	0	110	110	1	105	106			0	6	54	60
Northern Virginia Total	91	68	6,882	68	6,882	6,950	131	6,777	6,908	64	6,705	6,817	49	4,783	7,775
DC Metro Regional Total[^]	462	14,523	14,523	462	14,523	14,243	260	12,029	13,889	121	14,173	14,342	85	12,085	15,115
National Parks in Region	--	6	983	6	983	989	5	969	974			634			614
Regional Total Adjusted	91	61	7696	61	7696	15,232	265	12,998	14,863	121	14,173	14,976	85	12,085	15,749

[^]DC Metro Regional totals for under and over age 18 years not included for years with missing juvenile data

*Montgomery County data for persons under the age of 21 years determined to be driver.

Youth Data

Table 19B: SNAPSHOT! Alcohol Related Crashes, Injuries, and Arrests for Persons Under 21 Years of Age By Region, 2008

	Fatalities	Percentage of Alcohol-Related	Crashes	Percentage of Alcohol-related Crashes	Injuries	Percentage of Alcohol-related Inju-	Arrests	Percentage of Alcohol-related Arrests
District of Columbia	n/a	n/a	n/a	n/a	n/a	n/a	n/a	n/a
Maryland*								
Montgomery County	3	15.0%	146	21.2%	108	26.7%	243	6.3%
Prince George's County	14	2.6%	210	23.2%	203	35.5%	81	4.4%
MD Regional Total	17	1.9%	356	22.3%	311	31.8%	324	5.7%
Virginia								
Arlington County	0	n/a	23	9.3%	15	10.3%	22	3.2%
Fairfax County	1	50.0%	150	14.6%	79	13.8%	295	9.4%
Loudoun County	0	0.5%	36	14.5%	23	16.4%	66	8.1%
Prince William County	4	23.5%	65	15.9%	60	22.8%	174	7.9%
City of Alexandria	0	0.0%	10	9.6%	7	7.9%	20	3.9%
City of Fairfax	0	0.0%	5	19.2%	2	25.0%	16	8.8%
City of Falls Church	0	0.0%	0	0.0%	0	0.0%	0	0.0%
City of Manassas	0	0.0%	6	12.8%	1	6.7%	7	6.4%
City of Manassas Park	0	0.0%	2	33.3%	0	0.0%	n/a	n/a
Northern Virginia Total	5	23.8%	297	14.0%	187	15.1%	600	7.8%
DC Metro Regional Total	22	23.7%	653	17.0%	498	21.6%	924	6.1%
National Parks in Region	4	30.8%	6	6.9%	5	12%	23	3.7%
Regional Total Adjusted	26	24.5%	659	16.7%	503	21%	947	6.0%

^Regional totals do not include jurisdictions with missing data.

*Montgomery County data for persons under the age of 21 years determined to be driver and "at fault" for accident

Source: Jurisdictional contacts, see specific contact in Methodology



The Washington Regional Alcohol Program (WRAP) and its community partners have joined together and renewed their efforts to create an effective combination of enforcement, public information, education and advocacy to decrease underage drinking. WRAP offers a YouthGuide as a resource to keep teens safe all year long.

Methodology

Following is a listing of the agencies providing local jurisdictional data:

- District of Columbia:
 - Metropolitan Police Department
 - U.S. Park Police
- Maryland
- State of Maryland: Maryland State Police
 - Prince George's County Police Department
 - Montgomery County Department of Police
- Virginia
 - State of Virginia: Virginia Department of Motor Vehicles, 2008 Crash Facts
 - Department of Judicial Information Technology Office of Executive Secretary Supreme Court Of Virginia
 - Arlington County Police Department
 - Fairfax County Police Department
 - Loudoun County Sheriff's Office
 - Prince William County Police Department
 - City of Alexandria Police Department
 - City of Fairfax Police Department
 - City of Falls Church Police Department
 - City of Manassas Police Department
 - City of Manassas Park Police Department

Data Analysis

The findings in this report are based on data collected from organizations and agencies from across the Washington Metro region. Data tables provide totals within the Washington Metro region as well as individual jurisdictions. Analysis focuses on changes in motor vehicle fatalities, injuries, crashes, and arrests. Results are reported as numbers and percentage of alcohol-related incidents to total numbers across time.

Data Limitations

It is important to note limitations that affected collection and analysis of this data, as they may limit comparability across jurisdictions and influence the level of reasonable analysis. Whenever possible, limitations are noted within the tables and figures. It is important that the reader keep the following in mind:

It should be noted that Montgomery County, Maryland has recently changed and enhanced their database system. While these changes allow them to capture data more accurately, comparisons to previous year's data should be made with caution. In addition, because this report tracks just two jurisdictions in Maryland, regional totals could also be affected.

There is no standardization for data definitions, collection, or recording within the Washington Metro region. Each agency has its own system of data collection, coding, and management. In addition, the range and

type of data collected may not be consistent across jurisdictions. The data reported and analyzed in this report reflect data as reported by contact agencies. Independent verification of data to ensure accuracy is not within the scope of this report.

Information on data collection and management systems and changes within jurisdictions was not solicited. In addition, changes in laws or judicial priorities may result in increased attention to specific data (e.g. blood alcohol level in driver fatalities related to stricter server laws). In some cases, this may result in missing data or data that appears inconsistent when examined against the same values for previous years. It is beyond the scope of this report to identify data methodology or priority changes for each jurisdiction.

Data on impaired driver involvement in motor vehicle fatalities, injuries, crashes and arrests was requested for alcohol-impairment only. Therefore, data are assumed to reflect only alcohol impairment and are reported in this way, although some cases may involve drug use.

The number of incidents, total and related to alcohol impairment, is very small for some jurisdictions. Due to the small numbers, jurisdictional analysis might easily misrepresent the problem. For example, an increase of one alcohol-related fatality would have little impact in a jurisdiction that saw 50 alcohol-related fatalities the previous year, but would appear to represent a significant change in a small jurisdiction with only one or two alcohol-related fatalities the previous year.

Data are reported and analyzed by absolute numbers only. At this time, information that would allow identification of comparable rates is unavailable. It is assumed that people involved in motor vehicle crashes and arrests may live within or outside the Washington Metro region. Collection of data on driver or passenger residence versus jurisdiction of accident is beyond the scope of this report. Calculating rates based on the Washington Metro region's population or number of licensed drivers would not accurately represent the problem since drivers may be from outside the jurisdiction.

Data on people under the age of 21 years is collected in an inconsistent manner among jurisdictions. Caution must be used in evaluation of this data due to varied definitions and missing data.

Many charts display two regional total numbers. The first, "DC Regional Total" is the total of the District of Columbia, the Maryland Region, and the Northern Virginia Region. The second regional number, "Regional Total Adjusted" includes data from the United States Park Police. Because the Park Police information has only been recently collected, it is shown separately and the two regional totals are shown so that comparisons with previous years can be done.

