


A REGION UNITED: GOALS & ACTIONS FOR 2030

Metropolitan Washington Planning Framework to Advance Equity, Transportation, Housing, and Climate Goals

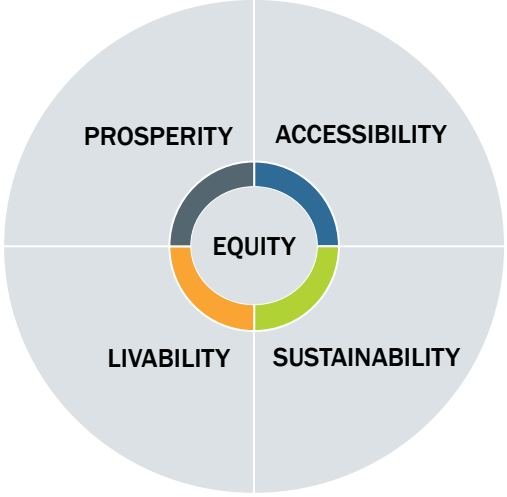
Chuck Bean
COG Executive Director

National Capital Planning Commission
January 6, 2022



1


Region Forward Vision



PROSPERITY ACCESSIBILITY

LIVABILITY SUSTAINABILITY

EQUITY



Metropolitan Washington Planning Framework for 2030 | 2

2

COG Board Planning Priorities

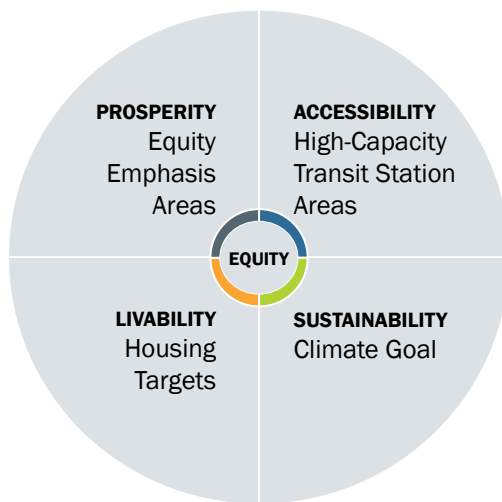
- If the challenges are interrelated, so are the solutions.
 - Housing Targets (2019)
 - Climate Goal (2020)
 - High-Capacity Transit Station Areas (2021)
 - Equity Emphasis Areas (2021)



New Carrollton rendering (WMATA)

3

Framework for 2030

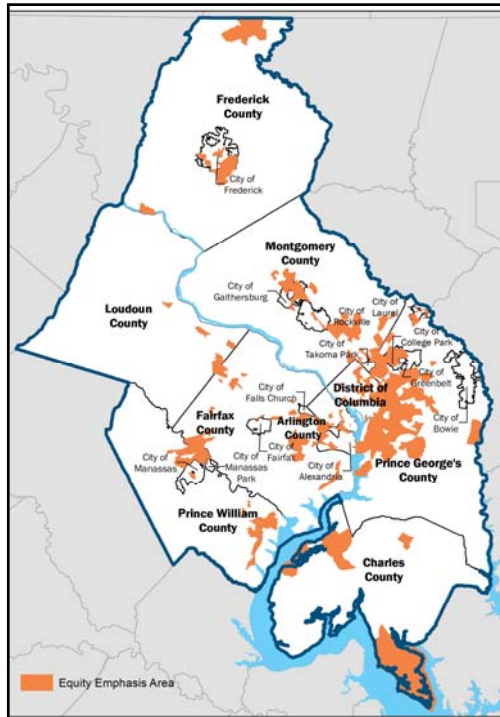


- **Affirming equity** – prioritizing underserved residents, weaving equity into vision.
- **Advancing cross-cutting goals** - demonstrating co-benefits, maximizing positive impacts.
- **Accelerating action** – providing a wide array of planning resources.

4

Advancing Shared Prosperity

5



Elevate 350 Equity Emphasis Areas (EEAs)

Areas with high concentrations of underserved residents.
mwco.org/equityemphasisareas

6

EEAs Located Regionwide

- Nearly 30 percent of the region's population resides within EEAs.
- EEAs are present throughout the region:
 - 28 percent in DC
 - 47 percent in MD
 - 25 percent in VA

Equity Emphasis Areas per Jurisdiction					
TPB Planning Area Jurisdiction	Number of EEAs	Total Population		Population within EEAs	
		#	%	#	%
District of Columbia	97	692,625	12.4%	373,236	24.0%
Charles County	5	159,428	2.9%	17,979	1.2%
Frederick County	9	251,422	4.5%	40,271	2.6%
Montgomery County	49	1,043,530	18.7%	259,093	16.6%
Prince George's County	103	908,670	16.3%	413,340	26.5%
Maryland Subtotal	166	2,363,050	42.3%	730,683	46.9%
City of Alexandria	9	157,613	2.8%	45,274	2.9%
Arlington County	12	233,460	4.2%	47,013	3.0%
Fairfax County	43	1,145,857	20.5%	215,246	13.8%
City of Fairfax	0	23,531	0.4%	0	0.0%
City of Falls Church	0	14,128	0.3%	0	0.0%
Loudoun County	5	395,134	7.1%	27,437	1.8%
City of Manassas	1	41,174	0.7%	7,609	0.5%
City of Manassas Park	1	16,986	0.3%	7,291	0.5%
Prince William County	17	467,886	8.4%	103,940	6.7%
Fauquier Co. UZA portion	0	35,928	0.6%	0	0.0%
Virginia Subtotal	88	2,531,697	45.3%	453,810	29.1%
Total	351	5,587,372	100.0%	1,557,729	100.0%



7

Cross-cutting: Opportunities for Broader Application of EEAs

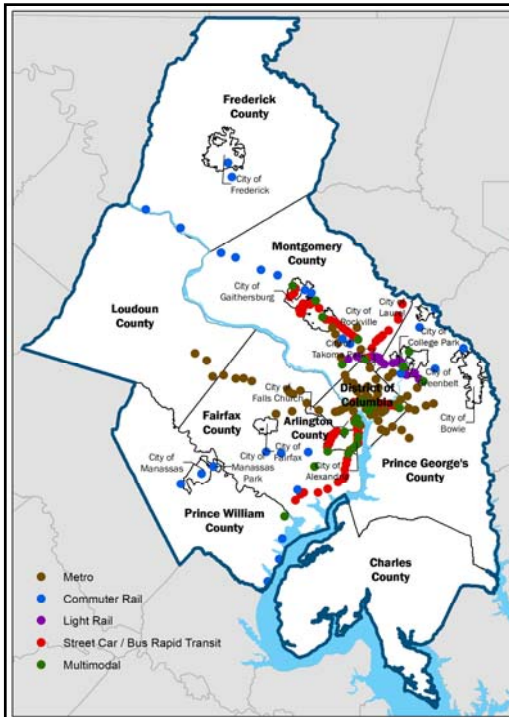
- EEAs can be used broadly in many local/regional planning activities:
 - Housing
 - Community Planning
 - Health
 - Public Safety
 - Transportation
 - Education
 - Economic Opportunities
 - Others!
- Examine the identified need in any planning activity – such as housing, transportation, health, climate change – includes EEAs and magnitude of need within EEAs.
- Customize solutions, as needed, to address the specific considerations within EEAs.



8

Advancing Accessibility

9



Optimize 225 High-Capacity Transit Station Areas (HCTs)

Locations around Metrorail, Commuter Rail, Light Rail, Bus Rapid Transit (BRT), and Streetcar.

mwkog.org/highcapacitytransit

10

High-Capacity Transit Station Areas (HCTs)

- Comprise just 10 percent—or 350 square miles—of the region's land area.
- Between now and 2030, HCTs will be the focus for:
 - 42 percent of the region's new household growth.
 - 55 percent of new job growth.
- A focus of our regional housing targets.
- Critical in our effort to build successful transit-oriented communities.



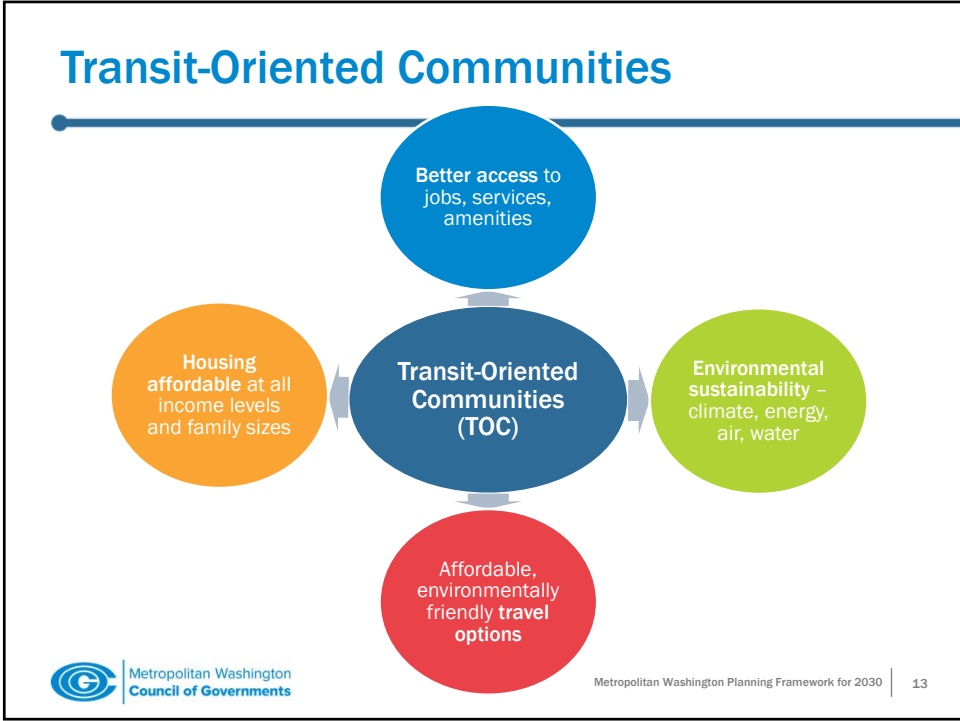
11

HCTs by Jurisdiction/Mode

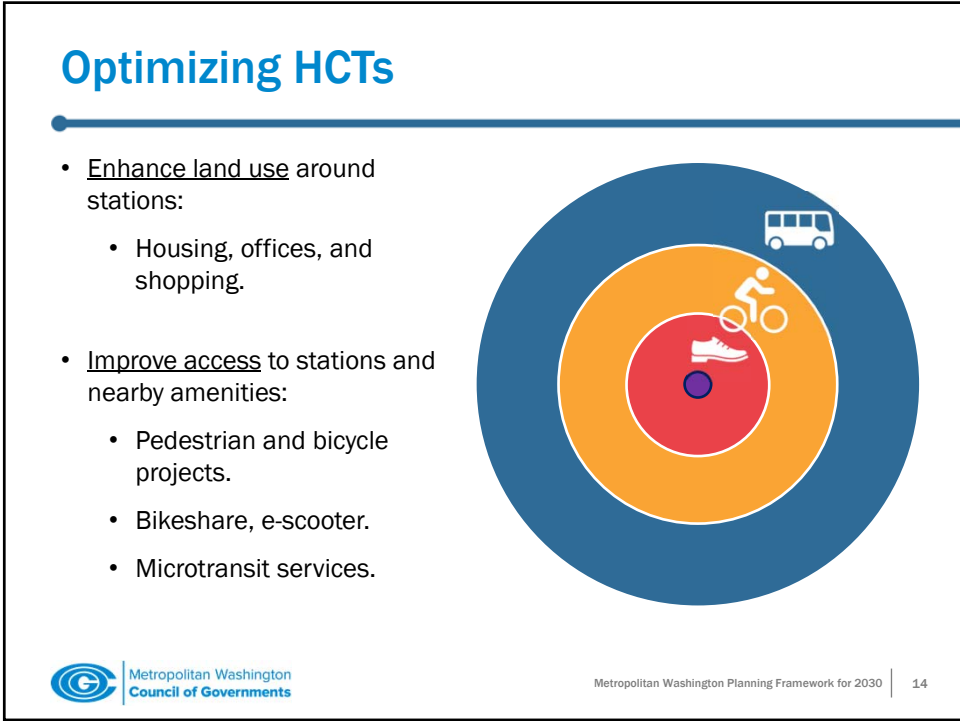
JURISDICTION	TOTAL	Commuter Rail	Light Rail	Metro Rail	Multi System	Streetcar / BRT
City of Alexandria	21	0	0	1	4	16
Arlington County	19	0	0	8	4	7
City of College Park	5	0	3	0	2	0
District of Columbia	55	0	0	34	6	15
Fairfax County	28	4	0	11	2	11
Frederick County	3	3	0	0	0	0
City of Frederick	1	1	0	0	0	0
City of Gaithersburg	6	1	0	0	1	4
City of Greenbelt	1	0	0	0	1	0
City of Laurel	1	1	0	0	0	0
Loudoun County	3	0	0	3	0	0
City of Manassas	1	1	0	0	0	0
City of Manassas Park	1	1	0	0	0	0
Montgomery County	47	7	8	5	4	23
Prince George's County	23	4	6	12	1	0
Prince William County	5	4	0	0	1	0
City of Rockville	6	0	0	1	1	4
Regional Total	255	27	17	75	26	80

**The Greenbelt and Van Dorn HCTs are located on jurisdictional boundaries. Greenbelt is in the cities of Greenbelt and College Park, and Van Dorn is in the City of Alexandria and Fairfax County. These stations appear in their respective jurisdictional totals but are not double counted in the regional totals. (updated October 7, 2021)

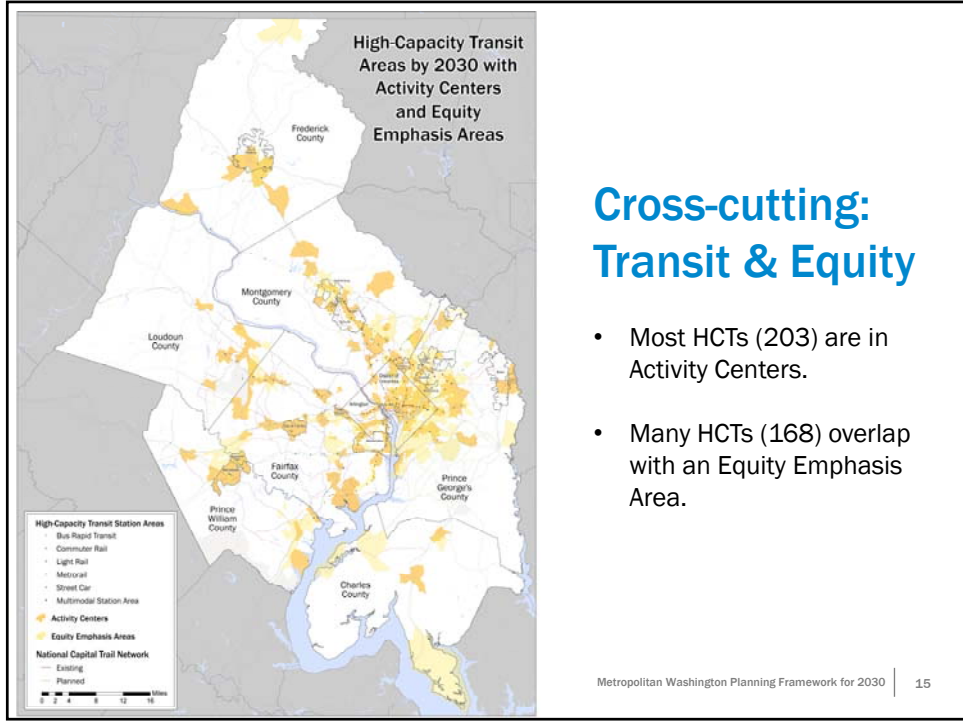
12



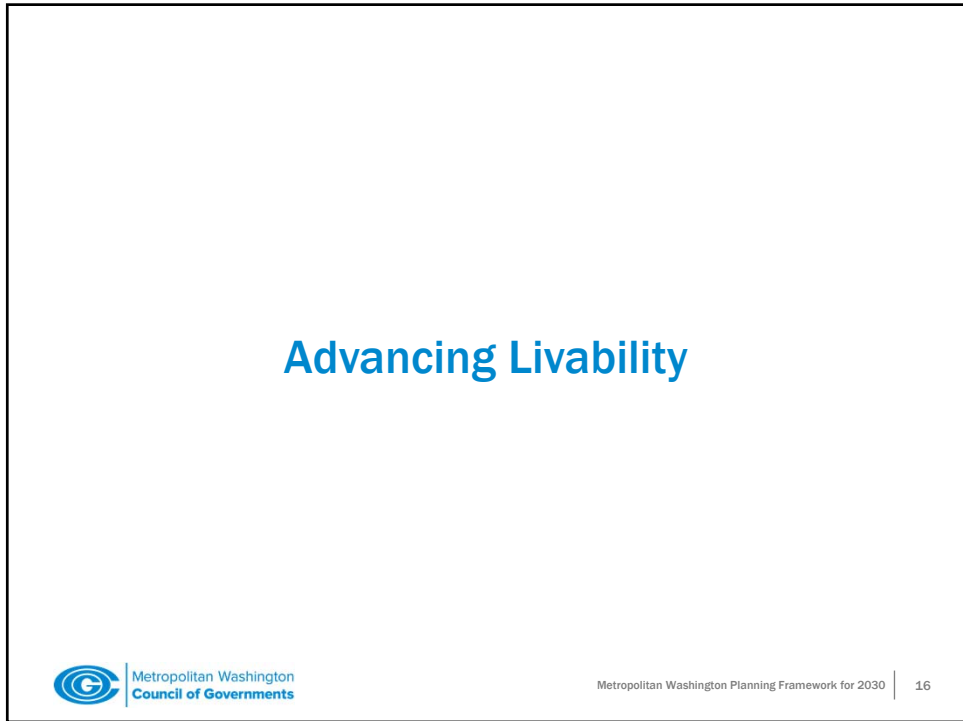
13



14

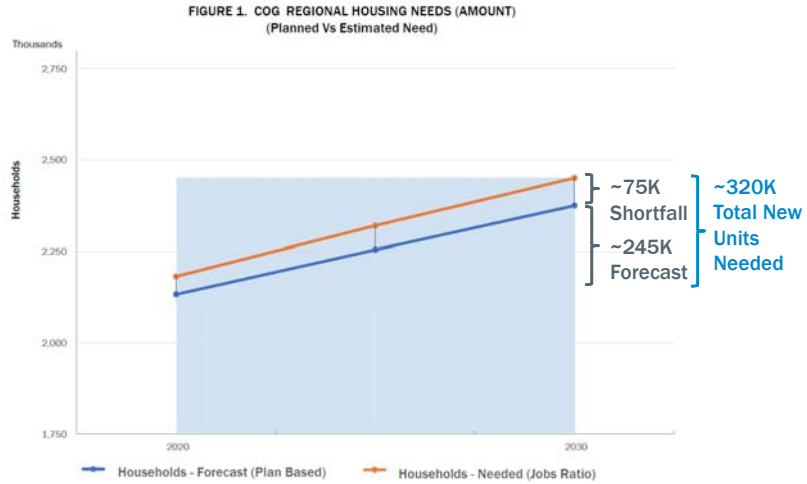


15



16

Housing Needs, 2020-2030



17

Regional Housing Targets: 2020-2030

Regional Target 1:

AMOUNT

At least 320,000 housing units should be added in the region between 2020 and 2030. This is an additional 75,000 units beyond the units already forecast for this period.

Regional Target 2:

ACCESSIBILITY

At least 75% of all new housing should be in Activity Centers or near high-capacity transit.

Regional Target 3:

AFFORDABILITY

At least 75% of new housing should be affordable to low- and middle-income households.

18

Cross-cutting: Housing, Transit, Equity

Regional Target 1:

AMOUNT

At least 320,000 housing units should be added in the region between 2020 and 2030. This is an additional 75,000 units beyond the units already forecast for this period.

Regional Target 2:

ACCESSIBILITY

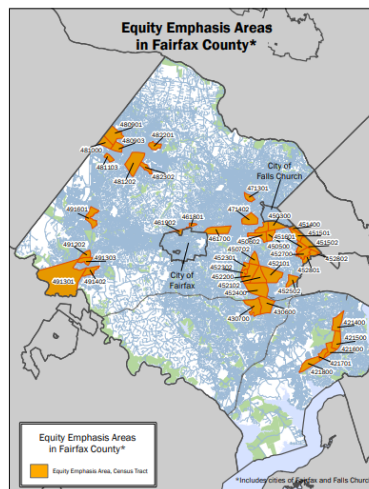
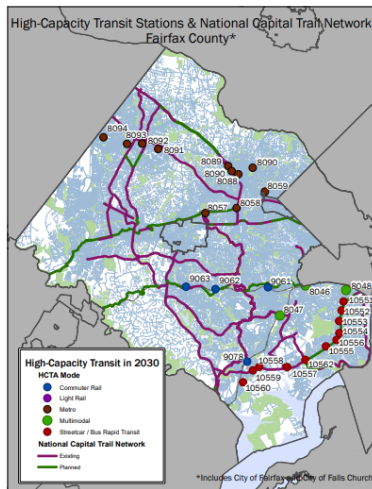
At least 75% of all new housing should be in Activity Centers or near high-capacity transit.

Regional Target 3:

AFFORDABILITY

At least 75% of new housing should be affordable to low- and middle-income households.

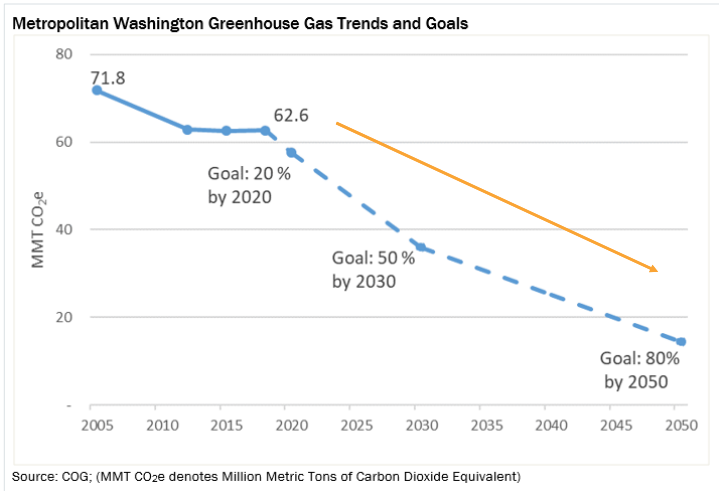
Cross-cutting: Housing, Transit, Equity



Advancing Sustainability

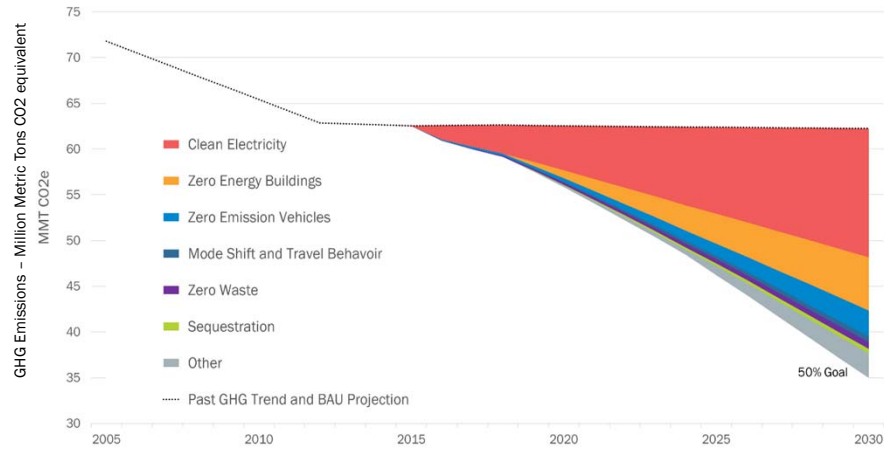
21

Regional Climate Goals – 2020-2030



22

GHG Emission Reduction Strategies

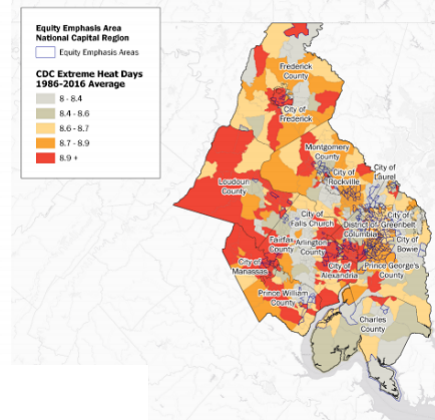


23

Cross-cutting: Climate, Equity, Transit, and Housing

- 2030 Climate and Energy Action Plan identified equity-focused actions the region must take in pursuit of its climate goals.
 - Specifically, prioritizing sustainable energy access for all residents.
- Increased transit use and fewer solo drivers.
- More housing options that use less energy.

Figure 10: Extreme Heat Days and Equity Emphasis Areas



24

Accelerating Action




Metropolitan Washington Planning Framework for 2030 | 25

25

Accelerating Action

- Programs
 - Racial equity professional development
 - Housing Affordability Planning Program
 - Transit Within Reach; Transportation Land-Use Connections (TLC) Program
 - Climate/energy planning; Zero emission vehicles coordination
- Plans
 - Climate and Energy Action Plan
 - Housing Equity Plan
 - Visualize 2045 Aspirational Initiatives



Metropolitan Washington Planning Framework for 2030 | 26

26

Advancing Racial Equity

- Resolution R26-2020: the COG Board affirmed that our work will be anti-racist, will advance equity, and weave equity throughout our work.
- Chief Equity Officers Committee.
- Regional Learning Cohort.
- Internal organizational staff training.



27

Housing Affordability Planning Program

- Made possible with \$500,000 from Amazon Housing Equity Fund.
- \$75,000 grants to local governments and non-profit developers engaged in affordably-priced housing near transit.
 - Toward design work, feasibility studies, and zoning analyses to help jumpstart developments.



28

Climate/Energy Action Planning

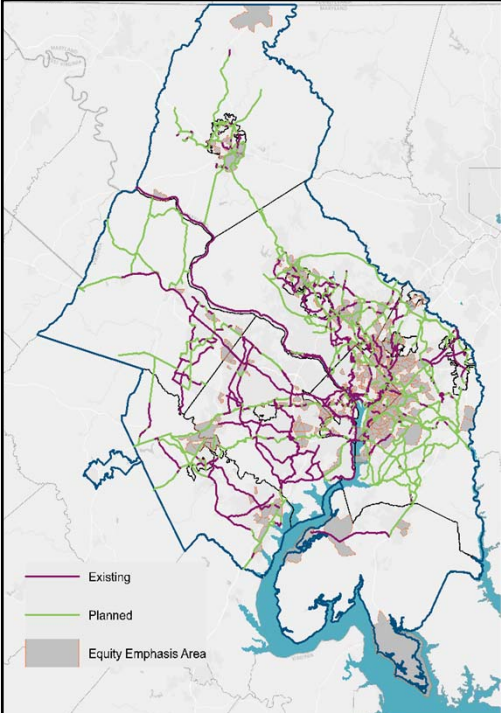
- COG helping members governments, agencies develop climate and energy action plans.
 - Government operations planning.
 - Community-wide planning.



Planning for Zero Emission Vehicles

- COG coordinated local/regional electric vehicle fleet planning. (Developing EV plans, policies.)
- Zero emission bus fleet support. (Sharing grant opportunities, lessons learned among members.)
- EV charger deployment.





National Capital Trail Network (NCTN)


- Long-distance, off-street trails accessible for people of all ages and abilities and suitable for both transportation and recreation.
- 180 of 225 HCTs are within half a mile.
- 55% of the network is unbuilt.

Metropolitan Washington Planning Framework for 2030 | 31


31

Bipartisan Infrastructure Bill

- Region to receive about \$20B/5 years.
 - \$3B (DC), \$7.6B (MD) and \$9.7B (VA)
- Additional \$30B available - competitive grant programs that our members individually, or collectively thru COG/TPB, can pursue.
- Alignment with COG framework - climate and equity goals.



VRE at Potomac River (Leandro Neumann Cluffo/Wikimedia Commons)



Metropolitan Washington Planning Framework for 2030 | 32

32

Chuck Bean

COG Executive Director
(202) 962-3260
cbean@mwcog.org

mwcog.org

777 North Capitol Street NE, Suite 300
Washington, DC 20002

