

FEARLESS IDEAS

– A GREAT UNIVERSITY TOWN



**OVERVIEW OF INNOVATION DISTRICT, RESEARCH PARK &
STRATEGY TO LEVERAGE UMD ACADEMIC/RESEARCH
STRENGTHS AS A CATALYST FOR JOB CREATION**

THINK

BIG

COLLEGES & SCHOOLS / 91 UNDERGRADUATE MAJORS

**COLLEGE OF AGRICULTURE
AND NATURAL RESOURCES**
WWW.AGNR.UMD.EDU

**SCHOOL OF ARCHITECTURE,
PLANNING AND PRESERVATION**
WWW.ARCH.UMD.EDU

COLLEGE OF ARTS AND HUMANITIES
WWW.ARHU.UMD.EDU

**COLLEGE OF BEHAVIORAL
AND SOCIAL SCIENCES**
WWW.BSOS.UMD.EDU

ROBERT H. SMITH SCHOOL OF BUSINESS
WWW.RHSMITH.UMD.EDU

**COLLEGE OF COMPUTER,
MATHEMATICAL, AND NATURAL
SCIENCES**
WWW.CMNS.UMD.EDU

COLLEGE OF EDUCATION
WWW.EDUCATION.UMD.EDU

**A. JAMES CLARK SCHOOL
OF ENGINEERING**
WWW.ENG.UMD.EDU

THE GRADUATE SCHOOL
WWW.GRADSCHOOL.UMD.EDU

COLLEGE OF INFORMATION STUDIES
WWW.ISCHOOL.UMD.EDU

**PHILIP MERRILL COLLEGE
OF JOURNALISM**
WWW.MERRILL.UMD.EDU

SCHOOL OF PUBLIC HEALTH
WWW.SPH.UMD.EDU

SCHOOL OF PUBLIC POLICY
WWW.PUBLICPOLICY.UMD.EDU

UNDERGRADUATE STUDIES
WWW.UGST.UMD.EDU

UNIVERSITY LIBRARIES
WWW.LIB.UMD.EDU

1,250 CAMPUS ACRES

37 RESIDENCE HALLS / 4.1M LIBRARY VOLUMES

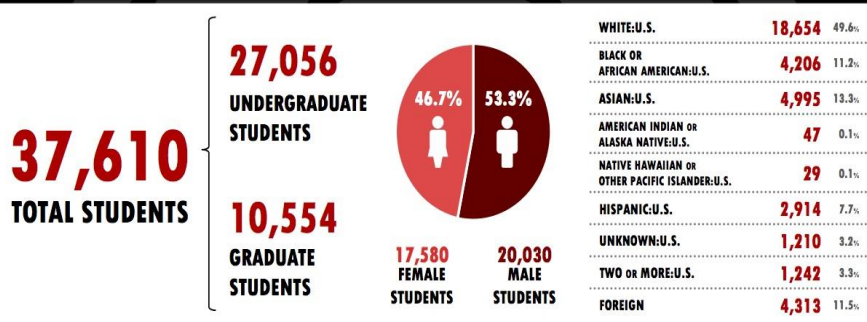


UNIVERSITY OF MARYLAND CAMPUS OVERVIEW

FOUNDED IN 1856 FLAGSHIP SCHOOL OF UNIVERSITY SYSTEM OF MARYLAND 1,250 ACRE CAMPUS

12 ACADEMIC COLLEGES AND SCHOOLS

91 BACHELOR DEGREE PROGRAMS | 106 MASTERS DEGREE PROGRAMS | 83 DOCTORAL DEGREE PROGRAMS



UMD HAS STUDENTS FROM ALL 50 STATES AND 114 DIFFERENT COUNTRIES.

76.9% OF ALL UMD UNDERGRADUATES ARE MARYLAND RESIDENTS.

FIRST-YEAR UNDERGRADUATE RETENTION RATE: 95.7%

Enrollments and figures are from Fall 2014. 1-year retention rate is based upon full time, degree-seeking, new first-time students entering in Fall 2013.



FOUR-YEAR UNDERGRADUATE GRADUATION RATE



SIX-YEAR UNDERGRADUATE GRADUATION RATE



Degree data is from FY2014. 4-year and 6-year graduation rates are based upon full time, degree-seeking, new first-time students entering in Fall 2010 and Fall 2008 respectively.



U.S. News & World Report (2014)

- #20 among national public universities

U.S. News & World Report - Best Global Universities (2014)

- #51 among 500 institutions in 50 countries

Kiplinger's Personal Finance (2014)

- #1 among 30 best college values in the mid-Atlantic

Academic Ranking of World Universities (2014)

- #43 in the world

Princeton Review Top 50 Schools for Entrepreneurship Programs (2015)

- #21 among undergraduate programs

BEST PUBLIC UNIVERSITIES IN THE U.S. - 2015



Evaluated based on the following

- Selectivity
- Prestige
- Advancement
- Cost
- Diversity
- Community

1. University of Michigan
2. UNC
3. UVA
4. College of William & Mary
5. UC Berkeley
6. UCLA
7. University of Florida

8. University of Maryland

9. University of Washington
10. University of Wisconsin

*Data from the Nat'l Center for
Education Statistics & the U.S. Census
Bureau's American Community Survey*

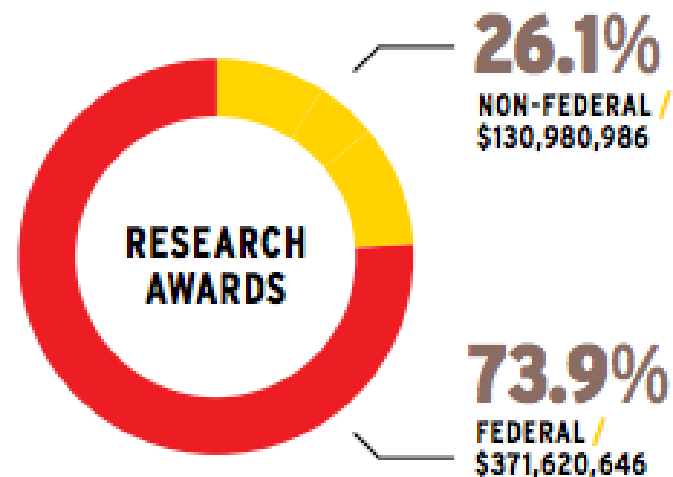
FUELING THE INNOVATION ECONOMY

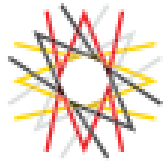
8:1

FUELING THE ECONOMY

The university puts more than \$3.4 billion into the state economy every year and supports more than 23,000 jobs, according to a 2009 Sage Policy Group report. That means for every dollar the state invests in us, we pump out a healthy \$8.

\$502M

 IN RESEARCH FUNDING IN FY 2012



UNIVERSITY OF MARYLAND

MPOWERING THE STATE

Together, the University of Maryland, College Park and the University of Maryland, Baltimore are *MPowering the State*. Collaboration and joint initiatives between the two universities will have a profound effect on our productivity, on the economy, and on the very fabric of higher education.

.....

MPOWERING THE STATE IS ► UM VENTURES / CENTER FOR HEALTH-RELATED INFORMATICS AND BIOIMAGING / COLLABORATIVE SCHOOL OF PUBLIC HEALTH / BIOENGINEERING AND HEALTH SCIENCES / EDUCATIONAL PROGRAMS AT SHADY GROVE / SEED GRANT PROGRAMS / CENTER OF EXCELLENCE IN REGULATORY SCIENCE AND INNOVATION / PRINCE GEORGE'S COUNTY ACCOUNTABLE CARE SYSTEM

CULTURE OF INNOVATION

School of Engineering

- Mtech, Hinman CEOs, Maryland Industrial Partnerships (MIPS)
- #23 Best Grad School – U.S. News & World Report
 - #11 in Aerospace
 - #15 in Electrical Communications
 - #19 in Computer Engineering

Computer, Mathematical and Natural Sciences (CMNS)

- Brendan Iribe Center for Computer Science and Innovation
- #29 Best Global University Subject

School of Business

- Dingman Center

Academy for Innovation & Entrepreneurship

- Launched by President Wallace Loh in 2013; engages 35,000+ of our students in innovation & entrepreneurship to prepare them to tackle the world's toughest problems
- Reimagined Cole Field House

Hinman CEOs Program

- Innovative residential entrepreneurship program for 90 junior and senior students to *live, learn, and launch* new ventures
- 12-credit academic track + coaching and mentoring + incubator space
- Highly competitive application process yields the top students on campus with 1/3 business, 1/3 engineering, and 1/3 arts & sciences



2014 Graduate

- Legislation tracking and prediction software
- Co-founder and CTO Jonathan Chen is a senior CS major
- Raised \$1.2M in venture funding from Mark Cuban, NEA, and First Round Capital in Fall 2013



2005 Graduate

- Online publishing platform for web and mobile experiences
- Founder & CEO is Anthony Casalena '05
- Raised \$30.5M in 2010
- *Inc. 500* Fastest-Growing Companies
- 262 employees today
- Super Bowl ad in 2014



STARTUP SHELL

- 100% student-run incubator and collective that cultivates entrepreneurship through collaboration
- 25 student companies
- Sponsor several on-campus programs: Bitcamp, RECESS, TEDxUMD





“The goal of Cupid’s Cup is to identify and reward students who have the entrepreneurial drive and conviction to take a risk and start a business while they are young. We took the competition to the national stage in 2012, and now we are seeking out the best student entrepreneurs in the world.” – Kevin Plank

BITCAMP



- Formed in 2014 after UMD won first place in the Fall 2013 Major League Hacking season
- Centers on the idea of YOU+TECH
- Brings 1000+ students from universities across the country for 36 hours
- Inspired Brendan Iribe and Michael Antonov to gift \$30M towards new CMNS facility

THE BUZZ IS REAL – MARYLAND IS ON THE MAP

EDUCATION LIFE

The Hackathon Fast Track, From Campus to Silicon Valley

April 6, 2015

“University of Maryland....is building a lab for engineering students to experiment with virtual reality hardware and software. The initiative is a result of a \$31 million donation by Brendan Iribe, chief executive of Oculus VR, the virtual reality start-up acquired by Facebook last year for \$2 billion.”

“Mr. Hashme, who directs the University of Maryland’s Bitcamp, has participated in more than 40 hackathons since 2013. He says he attends because they force him to learn new tech skills. At hackathons he enjoys meeting like-minded students from across the country” —‘It’s a room full of doers’

The New York Times

The Washington Post

March 24, 2015

On Small Business

Uber parks \$25,000 investment in University of Maryland's Startup Shell

"The Uber partnership is the latest in a series of moves by university officials to position the school as an innovative and entrepreneurial university."

"Zuhairah Washington, head of Uber's D.C. division, said the company selected the university largely due to its "mantra of pursuing fearless ideas," which she believes complements the underlying mission at Uber."

MTECH INCUBATORS

- TAP – First stage incubator
24,000 ft² of company space
14 current residents (>100 graduates)
\$300M VC funding, 2 IPOs over \$1B, 2
acquisitions over \$1B
Prototyping labs
- TVB – Second stage incubator
32,000 ft² of company space
14 current residents
- MI² – International incubator
9,200 ft² of company space
9 current residents (36 graduates)
- Startup Shell – Student incubator
100% student-run incubator and
collective
>25 student companies



PLACEMAKING ON CAMPUS –

Projects coming on-line to support the innovation that exists in the classroom

- **Reimagined Cole Field House - \$155M / Phase I Completion 2017 / Phase II 2018**

To include: Terrapin Performance Center, the Center for Sports Medicine, Health and Human Performance and the future home of the Academy of Innovation and Entrepreneurship.

- **St. John Learning & Teaching Center - \$112M / 2016**
- **Iribe Center for Computer Science & Innovation - \$138M / 2018**
- **A. James Clark Hall - \$90M / 2017**
- **The Hotel at UMD - \$146M / Winter/Early Spring 2017**

COLE FIELD HOUSE



\$25M ANCHOR GIFT

“The lessons I learned on the football field in College Park continue to fuel my entrepreneurial spirit and shape my professional approach.”

“By fostering a generation of entrepreneurial-minded young adults, we are preparing our students not just for the next four years, but for many years to come.”

- Kevin Plank, Founder & CEO, Under Armour ('96)

COLE FIELD HOUSE - OVERVIEW

<https://youtu.be/3ZT488jaTQ8>

IRIBE CENTER FOR COMPUTER SCIENCE & INNOVATION

LEAD DONORS



BRENDAN IRIBE

"There's something really special and personally and emotionally important about going to college. A university is not just about education...it's about the social experience of meeting people."

"I want The Iribe Center to feel like **Silicon Valley just hit College Park.**"

MICHAEL ANTONOV

"Work on projects and do the best you can. As you learn, you'll have to start with smaller projects, but then you'll build a bigger one—alone or with other people—and **you'll feel the power to create.**"



IRIBE CENTER – FORMER STUDENTS INVESTING IN INNOVATION

\$31M donated by Brendan Iribe

\$4M donated by Michael Antanov

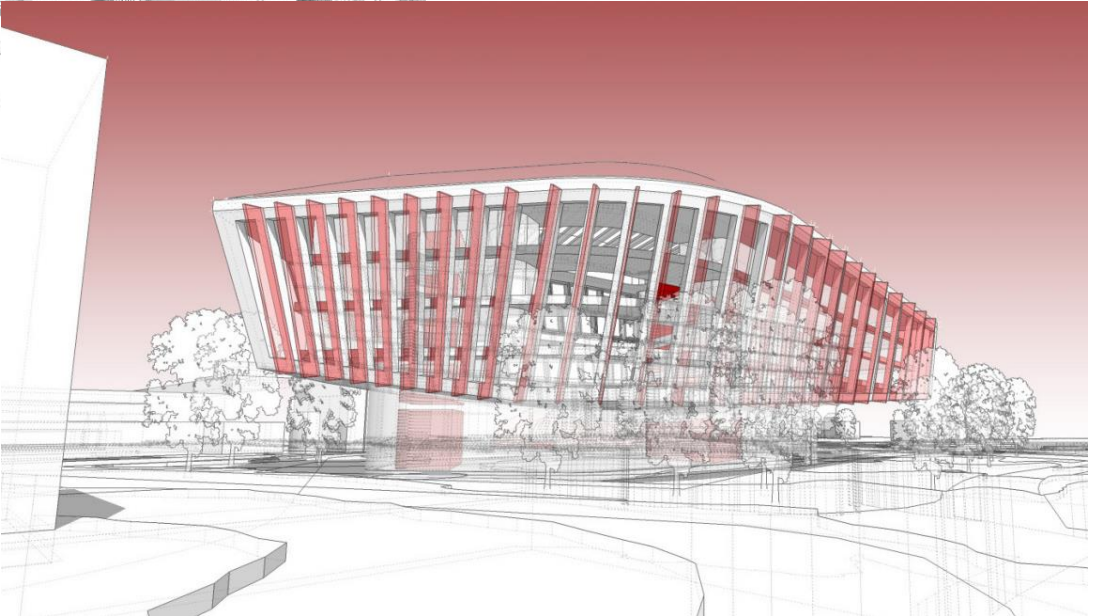
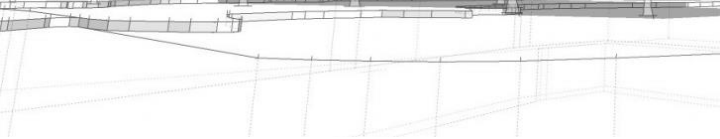
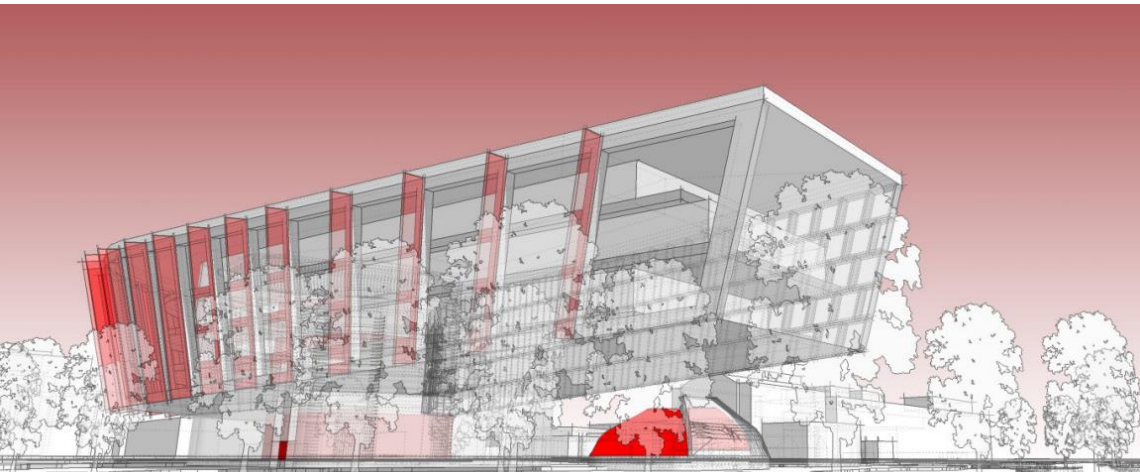
\$3M donated by Lizzie Iribe

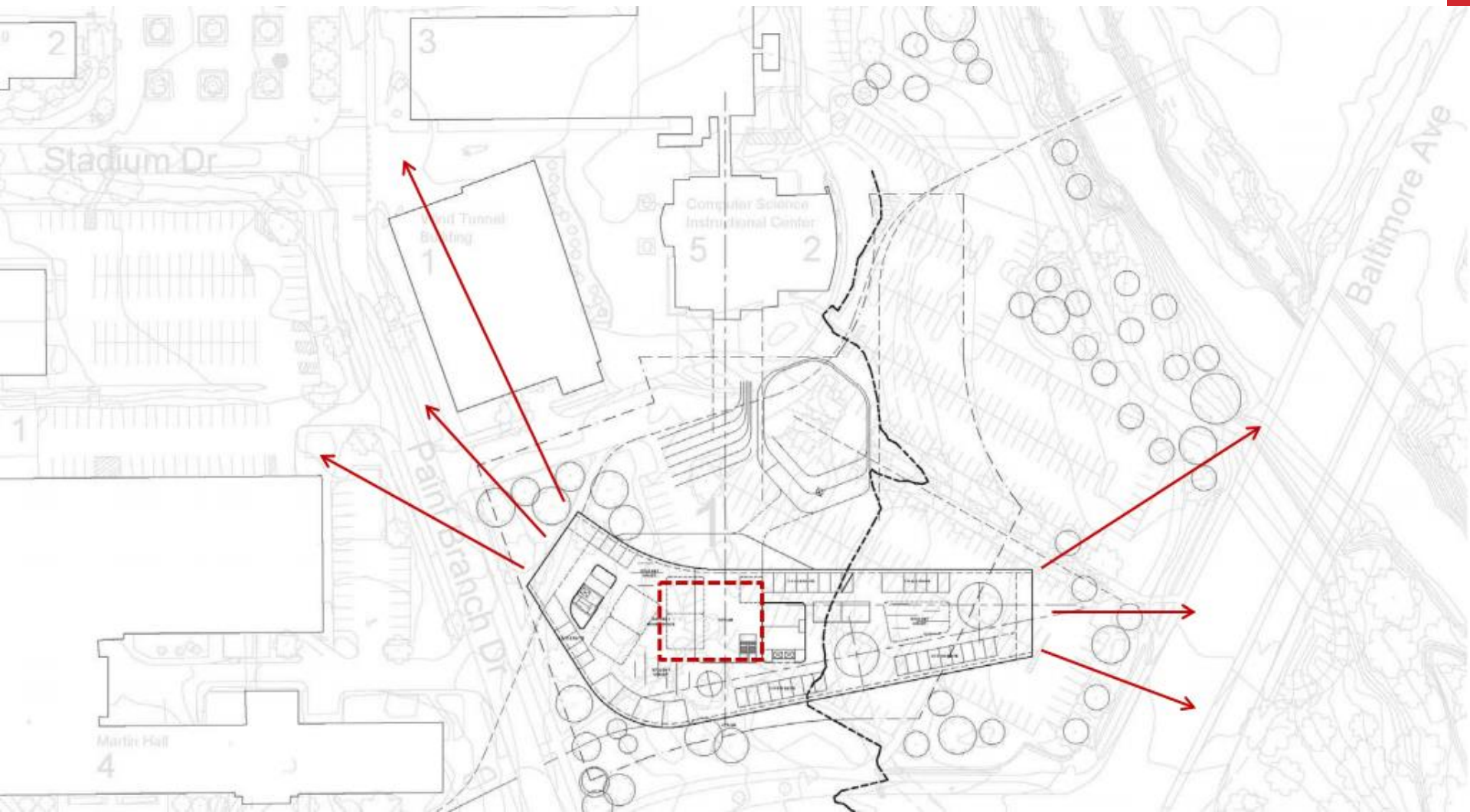
\$500k pledged by Professor Emeritus Bill Pugh

\$1M contributed by faculty to date

IRIBE CENTER FOR COMPUTER SCIENCE & INNOVATION







EDWARD ST. JOHN LEARNING & TEACHING CENTER



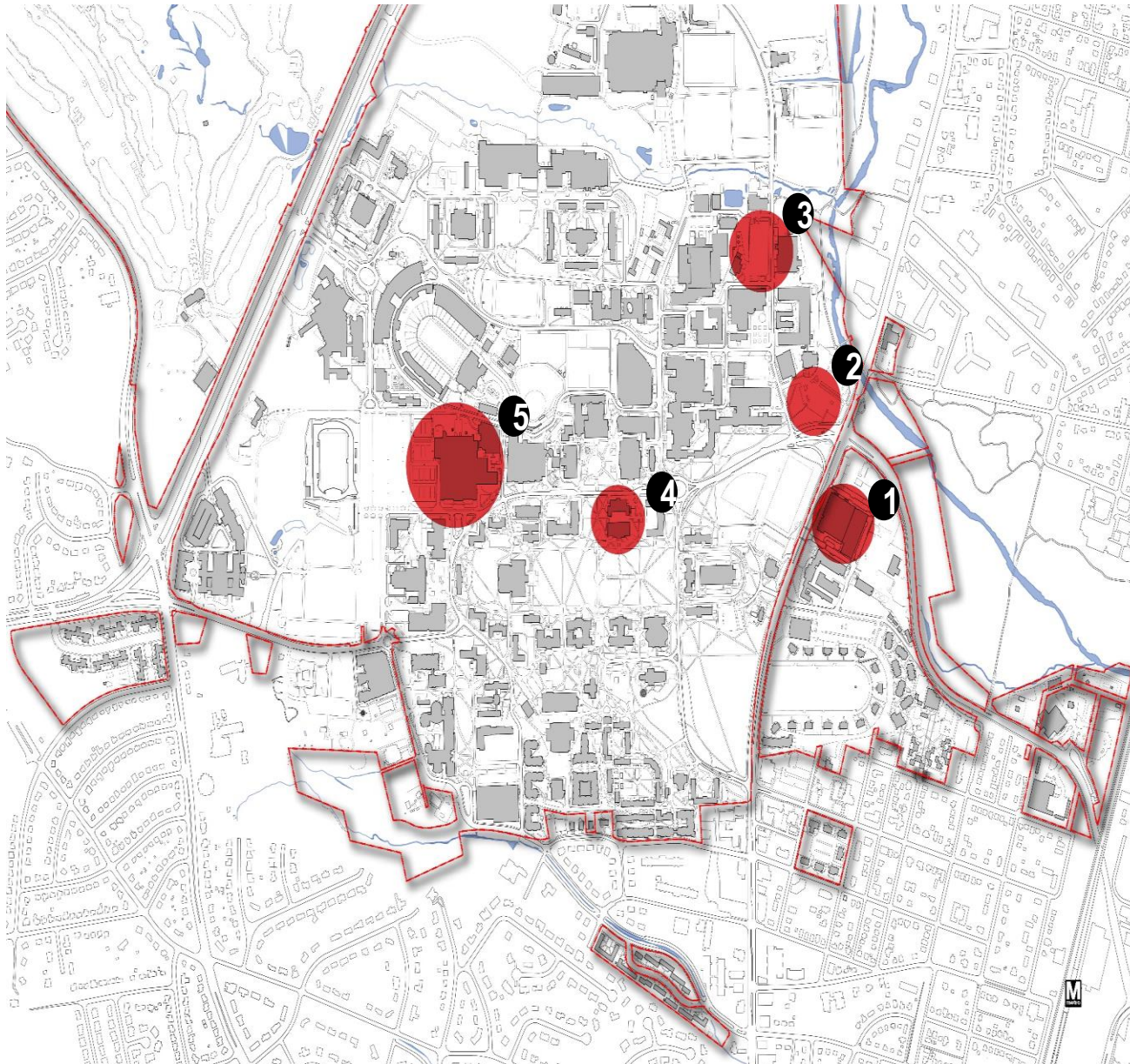


A. JAMES CLARK HALL - BIOENGINEERING





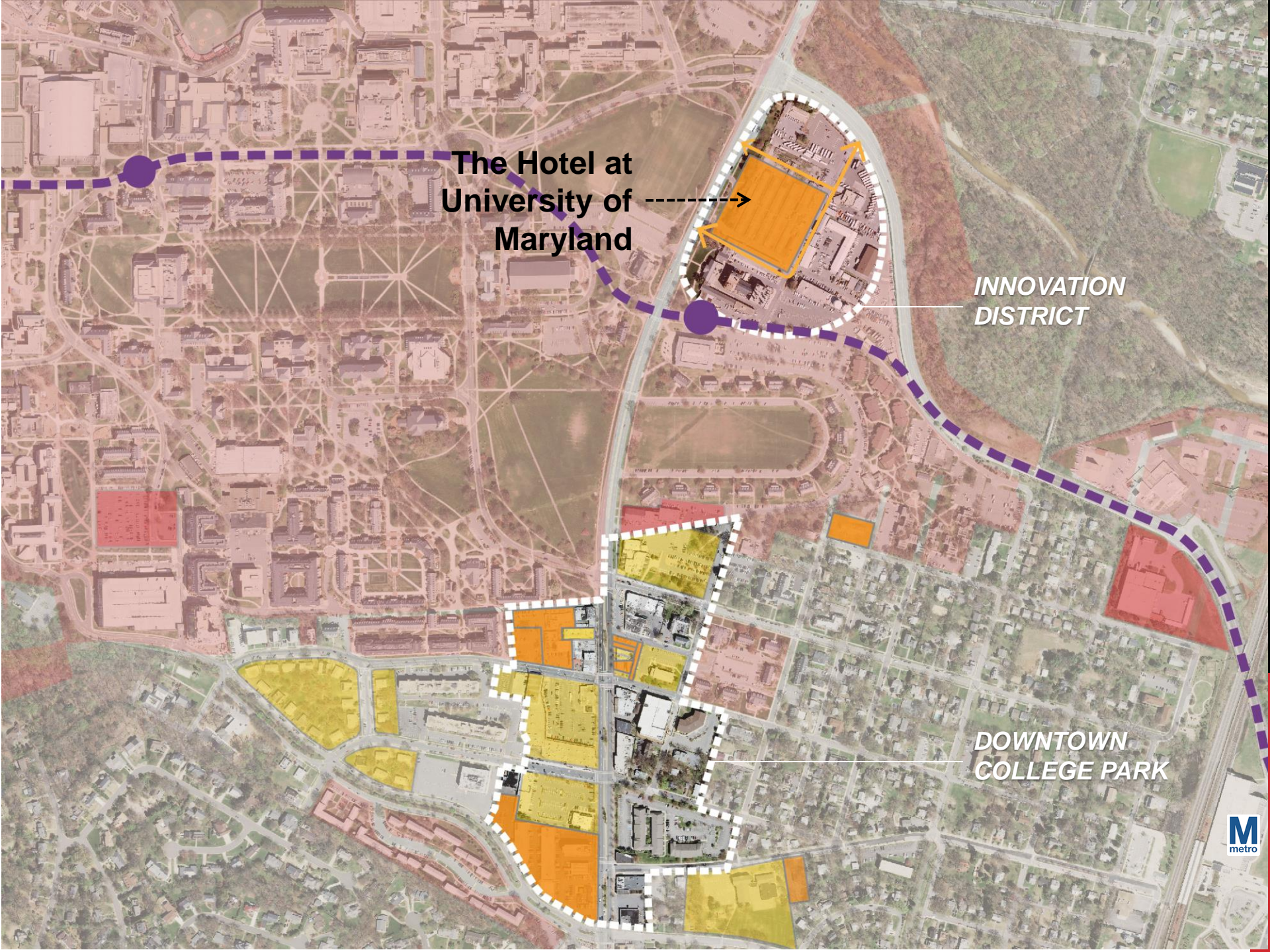
BIG FIVE IN FIVE



1. The Hotel at UMD
2. Iribe Center for Computer Science and Innovation
3. A. James Clark Hall
4. Ed St. John Learning & Teaching Center
5. Human Performance and Academic Research Facility

PLACEMAKING OFF CAMPUS

- **Activating all corners of the main entrance**
- **Extending spirit of entrepreneurship beyond campus borders**
- **Create the environment for companies created at UMD to grow and thrive in College Park**
- **The Hotel**
- **“Innovation District”**
- **Research Park**
- **Real Estate Opportunities along Route 1 and Paint Branch Parkway**



**The Hotel at
University of
Maryland**

**INNOVATION
DISTRICT**

**DOWNTOWN
COLLEGE PARK**





THE HOTEL

AT UNIVERSITY OF MARYLAND

COCP PRESENTATION 3/17/15



**GORDON &
GREENBERG**
ARCHITECTS



SOUTHERN
MANAGEMENT CORPORATION



Dewberry
CIVIL ENGINEERING/LANDSCAPE DESIGN











PLACEMAKING ALONG ROUTE 1

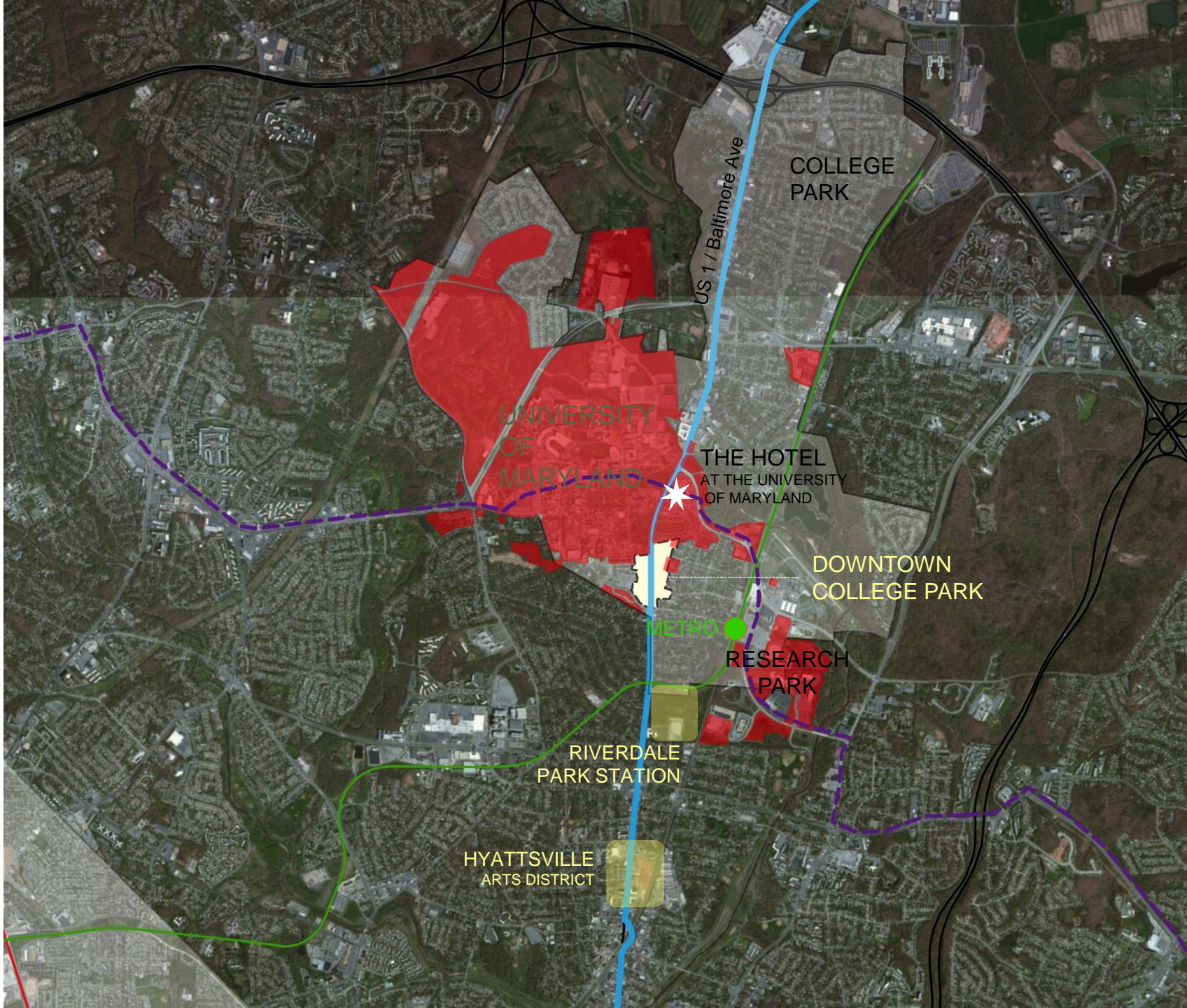
Sense of community matters

Attracting more world class faculty

Engaging private sector

Options for companies to grow

**College Park as a unique, innovative, world class
university town**



COLLEGE PARK

US 1 / Baltimore Ave

UNIVERSITY OF MARYLAND

THE HOTEL AT THE UNIVERSITY OF MARYLAND

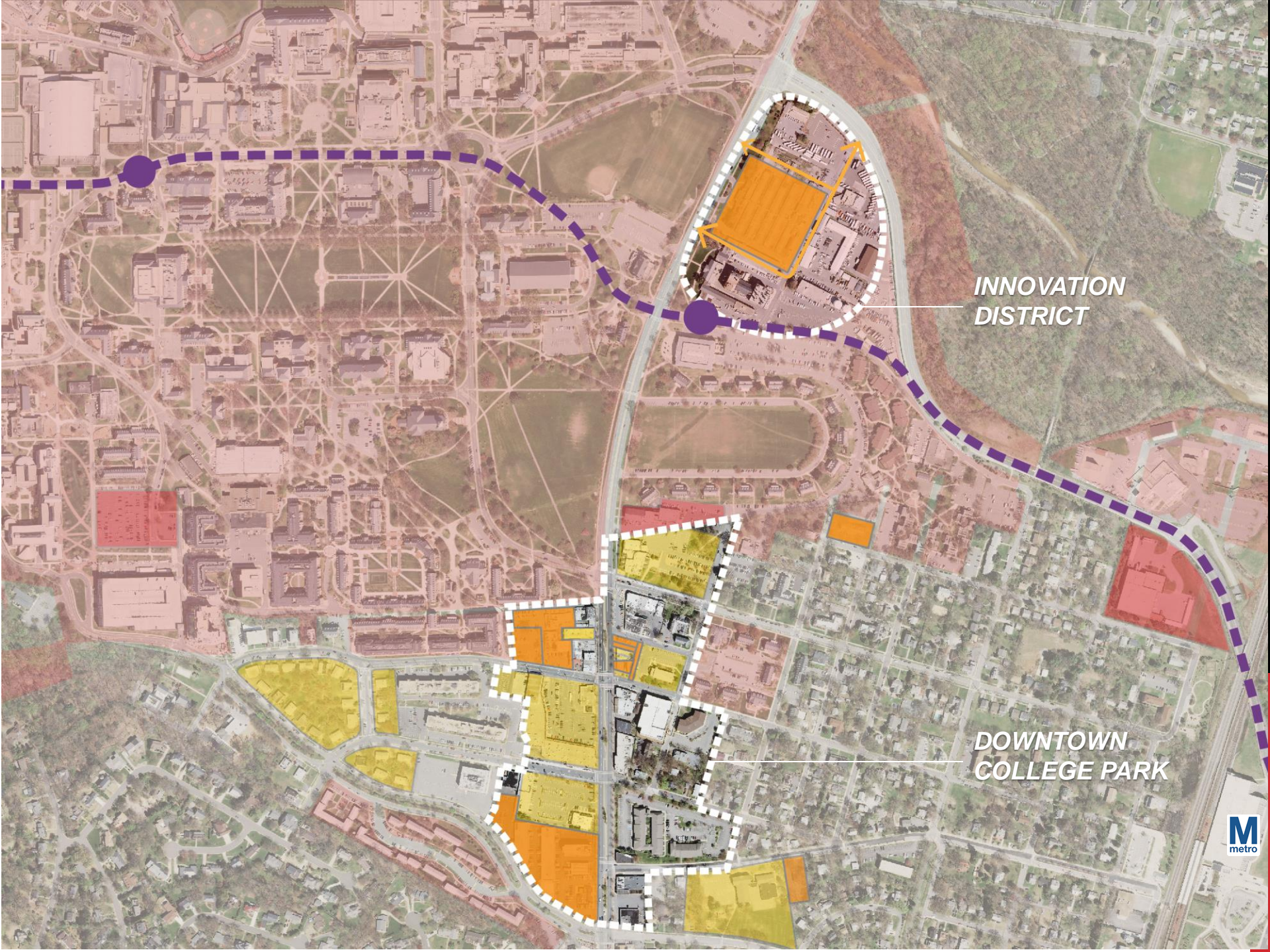
DOWNTOWN COLLEGE PARK

METRO

RESEARCH PARK

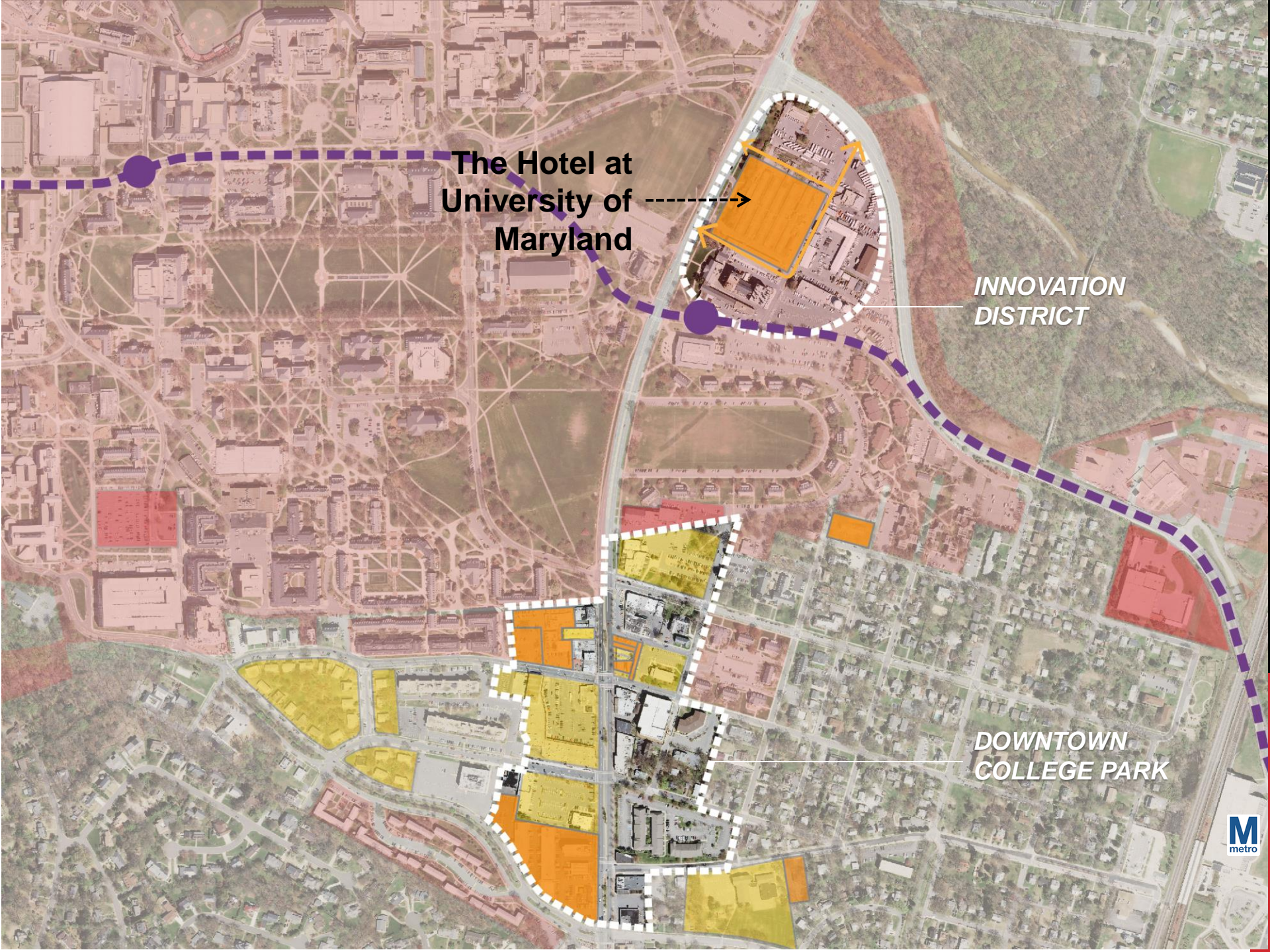
RIVERDALE PARK STATION

HYATTSVILLE ARTS DISTRICT



INNOVATION
DISTRICT

DOWNTOWN
COLLEGE PARK

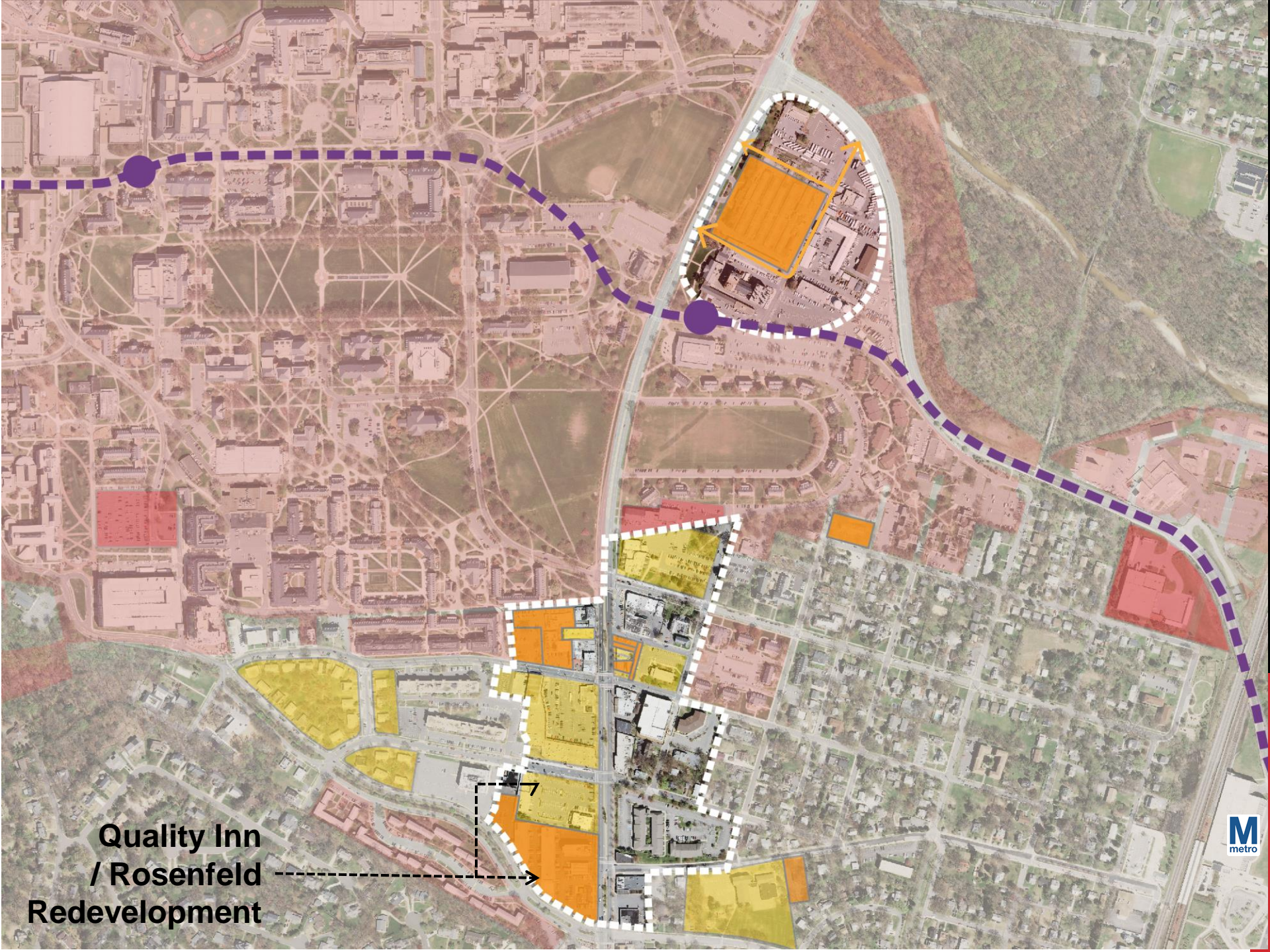


**The Hotel at
University of
Maryland**

**INNOVATION
DISTRICT**

**DOWNTOWN
COLLEGE PARK**





**Quality Inn
/ Rosenfeld
Redevelopment**

QUALITY INN & SUITES

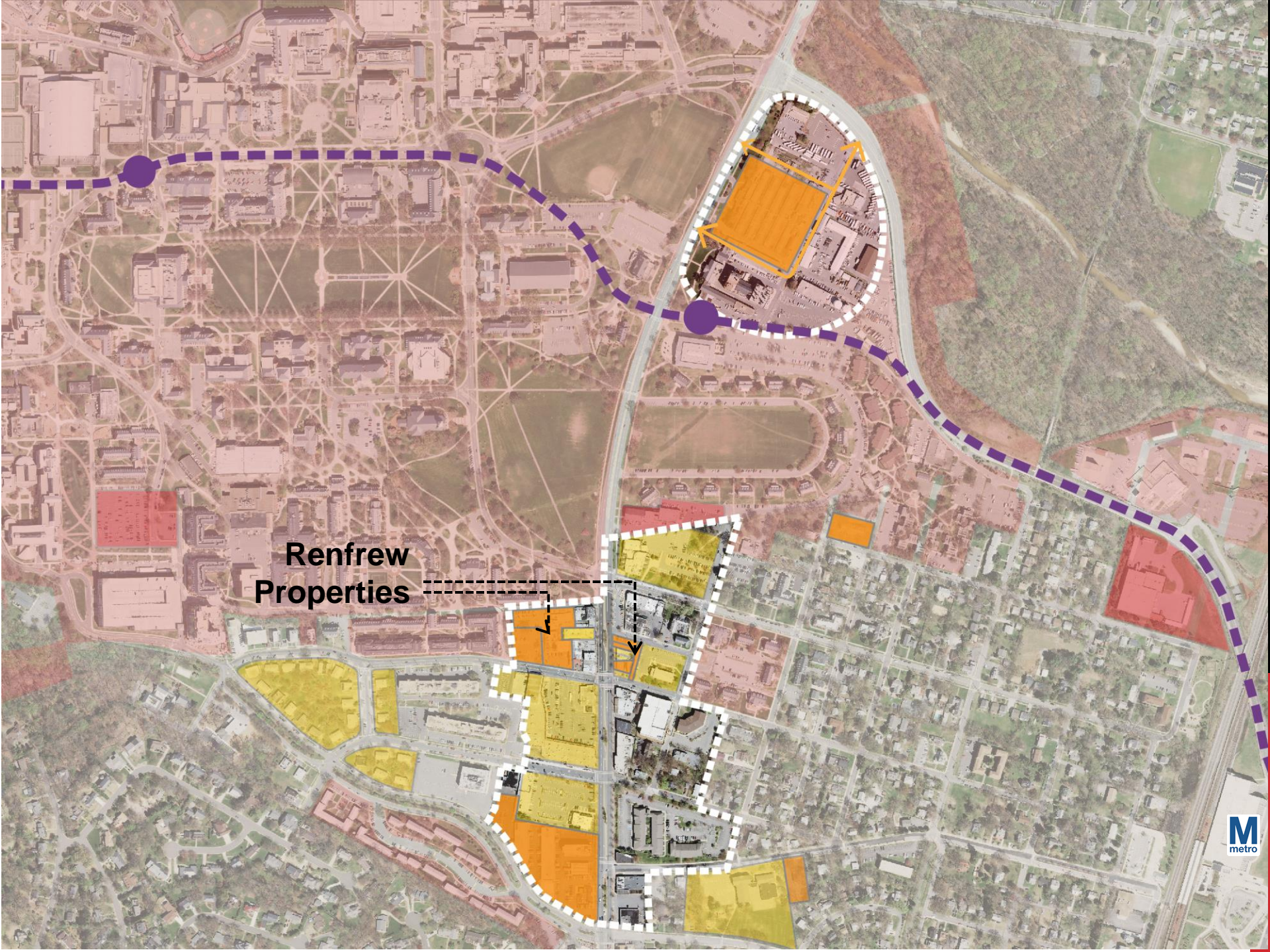
QUALITY
INN & SUITES



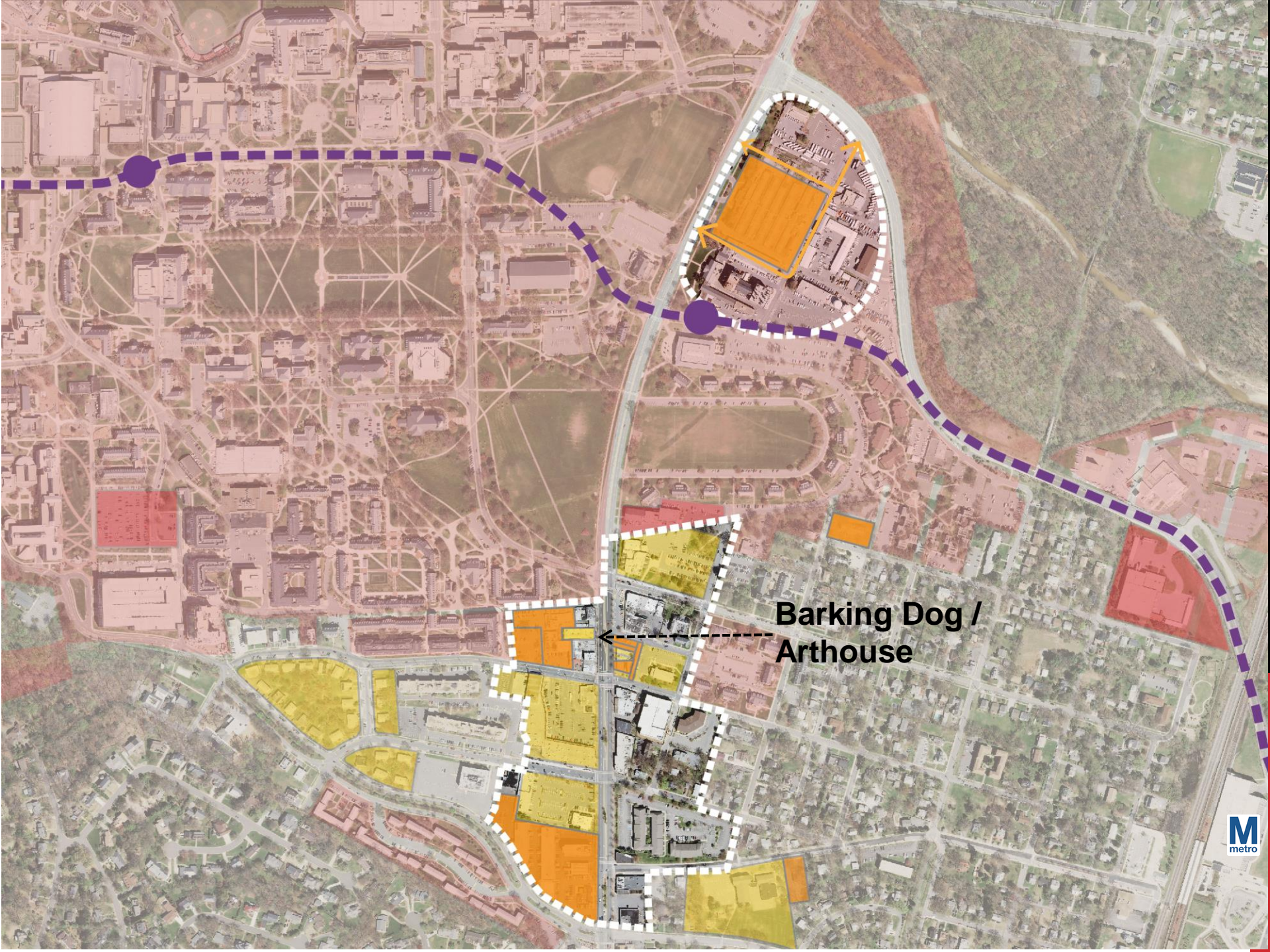




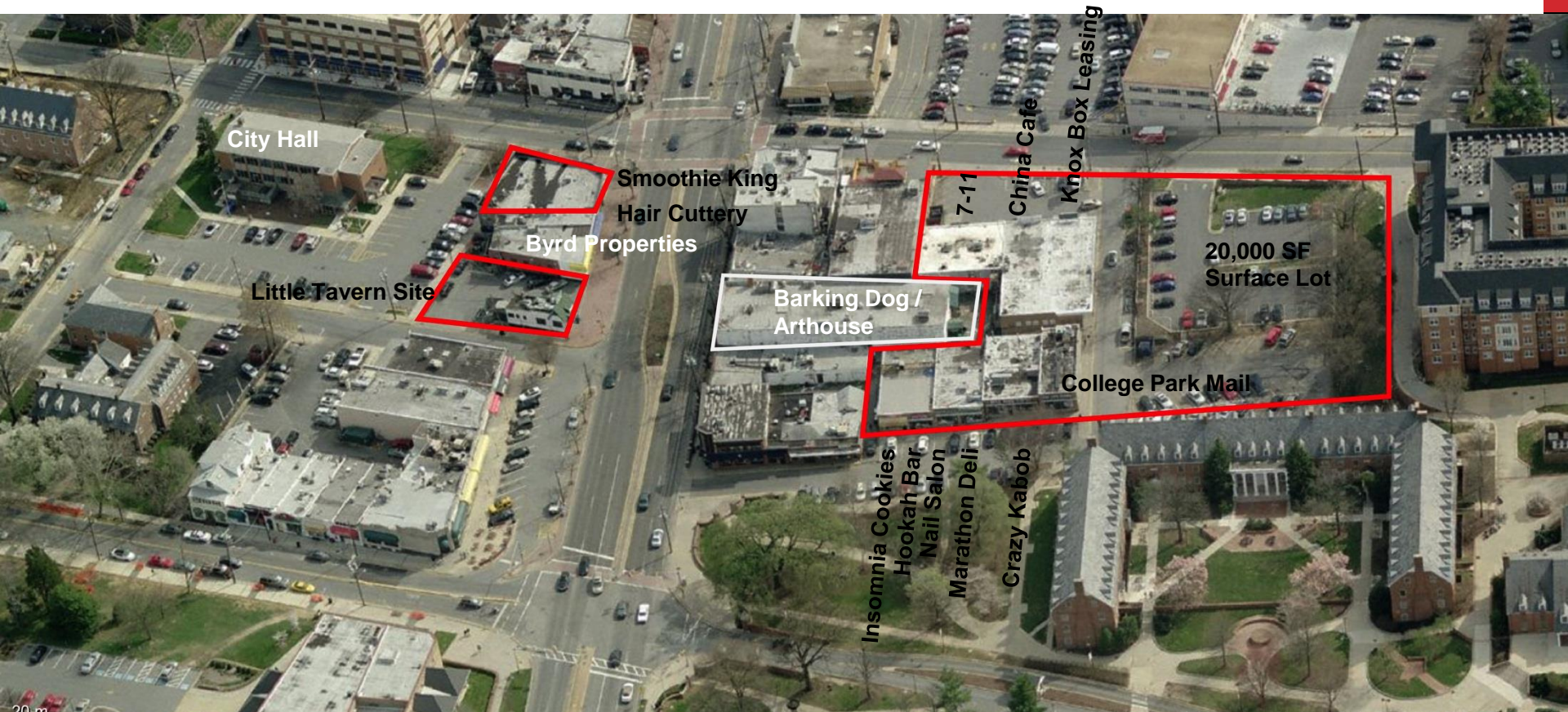




**Renfrew
Properties**



**Barking Dog /
Arthouse**



City Hall

Smoothie King
Hair Cuttery

Byrd Properties

Little Tavern Site

Barking Dog /
Arthouse

7-11

China Cafe

Knox Box Leasing

20,000 SF
Surface Lot

College Park Mail

Insomniac Cookies

Hookah Bar

Nail Salon

Marathon Deli

Crazy Kabob



THE BARKING DOG

7416

7416 BALTIMORE AVE

Ten Ren's Tea

PIZZERIA

ATM





ART

HOUSE

Ten Ren's Tea



ART

H
O
U
S
E

MILKBOY

Ten Ren's Tea

PIZZA MAN



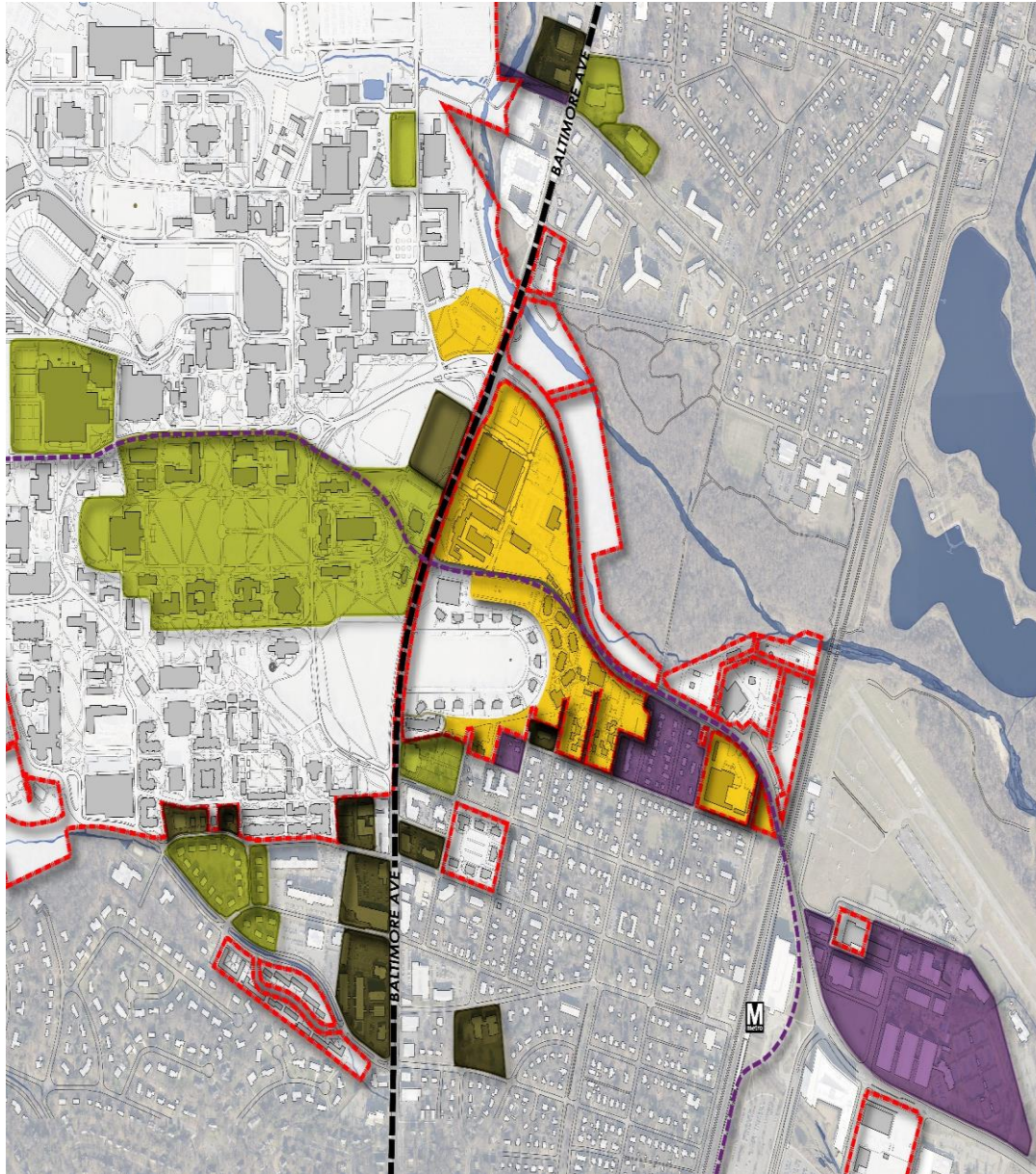
The Whole Foods Effect

Riverdale Park Station WFM & other retail



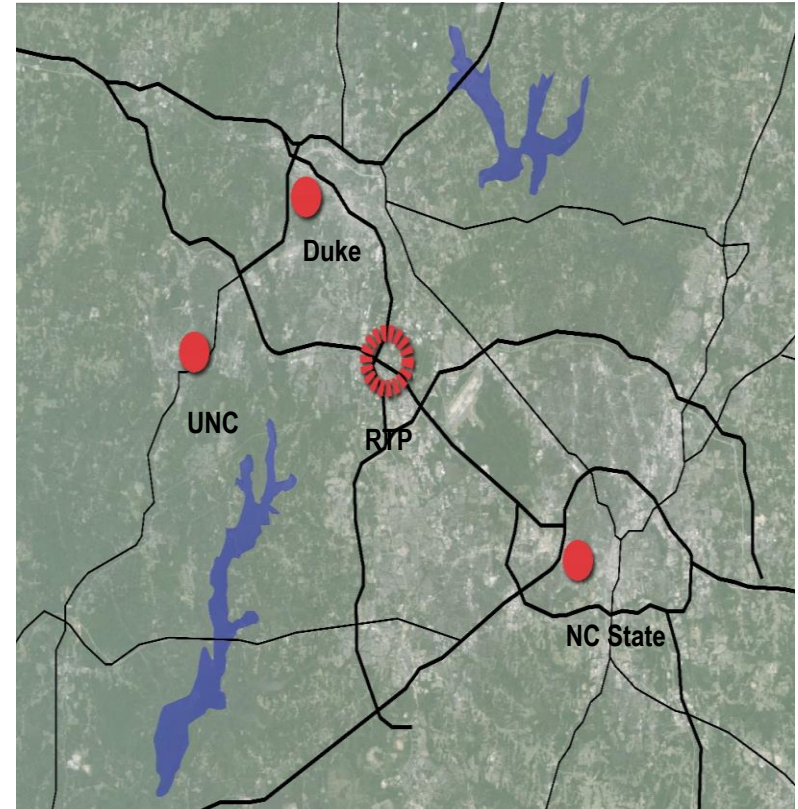
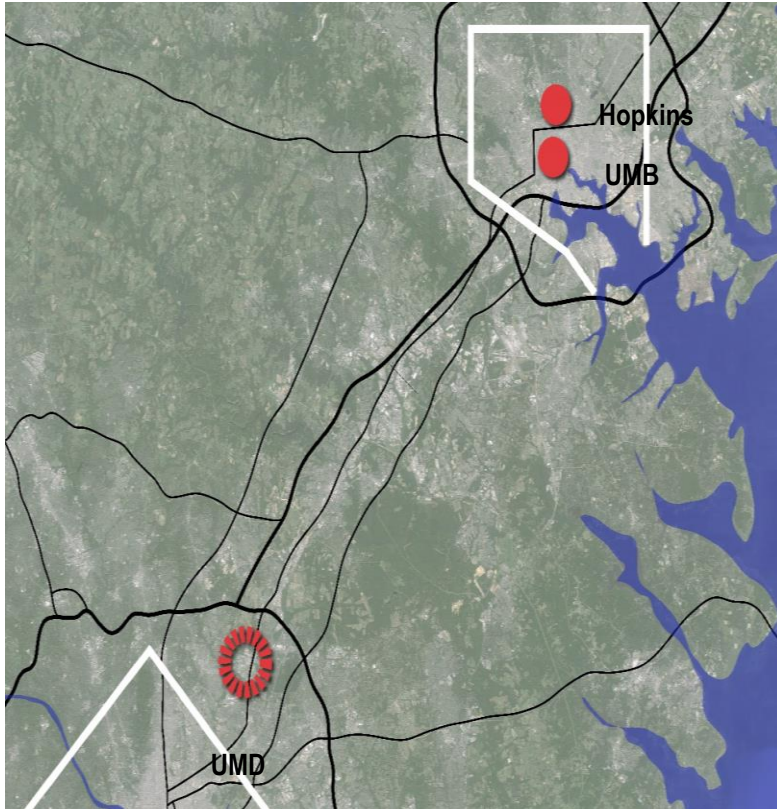


INNOVATION DISTRICT CONTEXT



-  UMD Property Ownership
-  Designated Innovation District Area
-  Current Revitalization/Development
-  Potential Future Redevelopment
-  Potential Acquisitions

INNOVATION DISTRICT COMPARISON



MARYLAND

Population:	5.6M	
Science + Engineering Doctorates Employed	28,000	✓
Academic R+D	\$2.16B	✓
Federal R+D	\$11.9B	✓

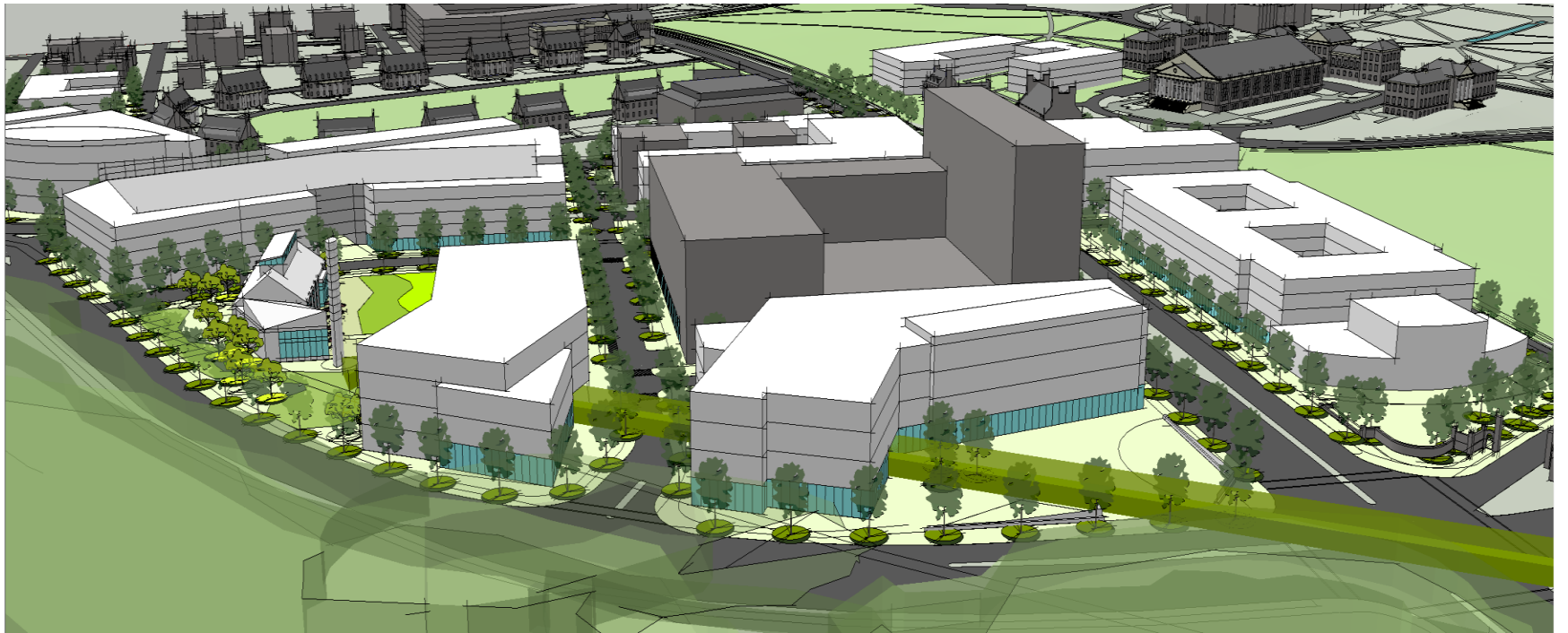
NC

Population:	9.2M	✓
Science + Engineering Doctorates Employed	20,000	
Academic R+D	\$1.82B	
Federal R+D	\$1.81B	



SCHEME ITERATIONS | PROPOSED







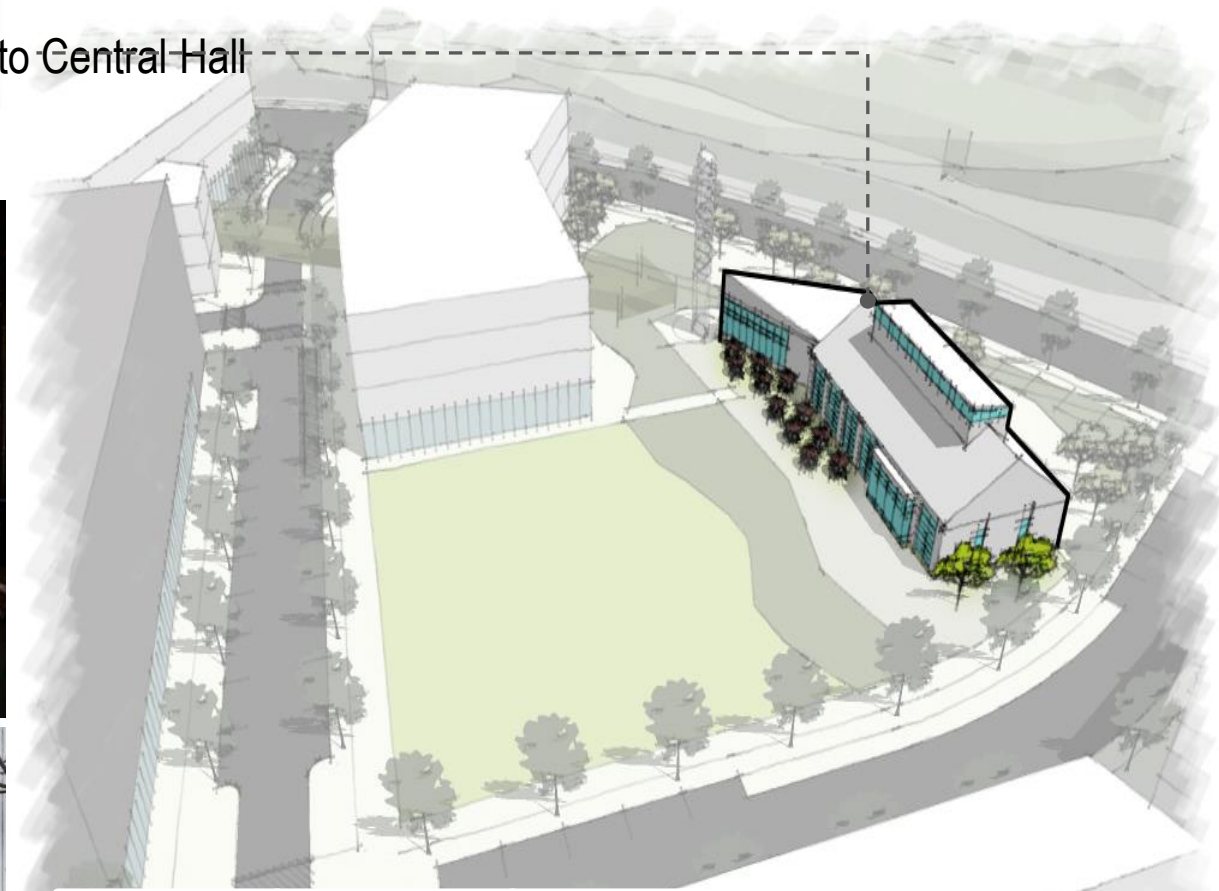


CREATING A COMMUNITY HEART



CREATING A COMMUNITY HEART |RENOVATE GARAGE|

Renovate Existing Garage into Central Hall



CREATING A COMMUNITY HEART |CENTRAL GREEN|

Convert Existing Garage into Central Hall

Create Active & Beautiful Village Green

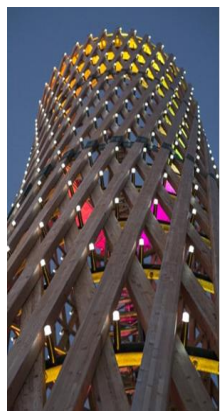
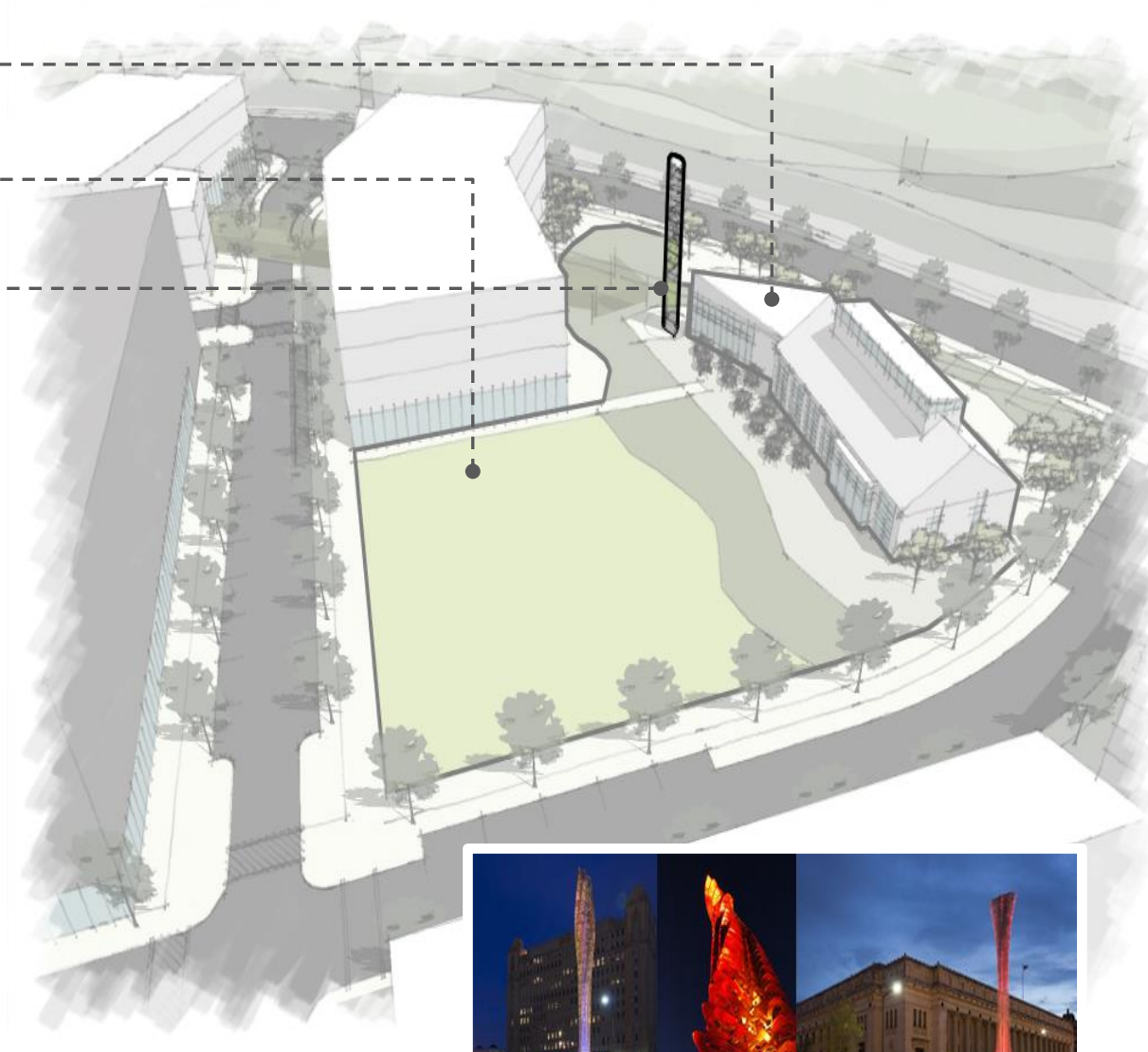


CREATING A COMMUNITY HEART | ICONIC SIGNAGE TOWER|

Convert Existing Garage into Central Hall

Create Active & Beautiful Village Green

Light / Sign / Event Tower



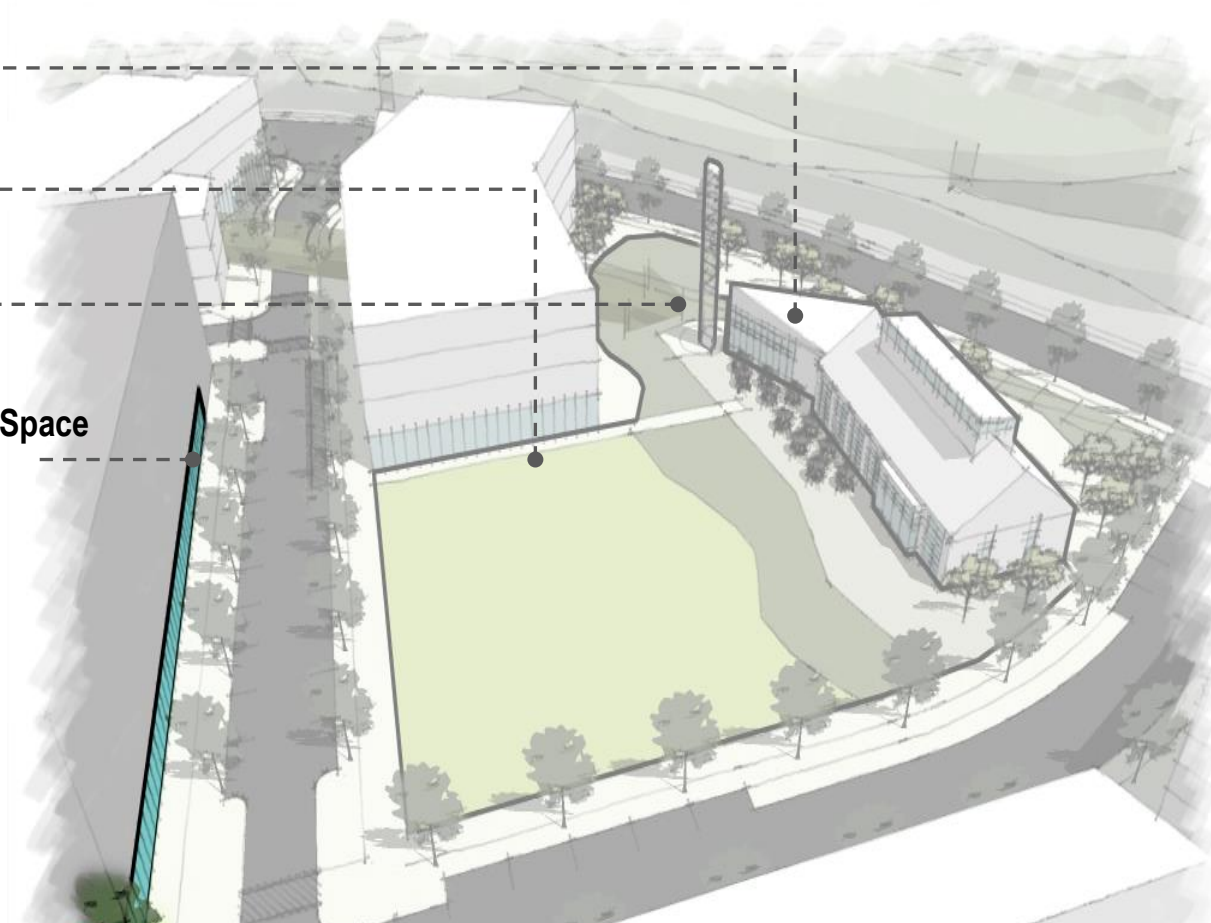
CREATING A COMMUNITY HEART | CO-WORKING SPACE

Activate Existing Garage into Central Hall

Create Active & Beautiful Village Green

Light / Sign / Event Tower

Activate Hotel Garage w/ Co-working Space



CREATING A COMMUNITY HEART | OFFICE/RESEARCH W/ GROUND FLOOR RETAIL |

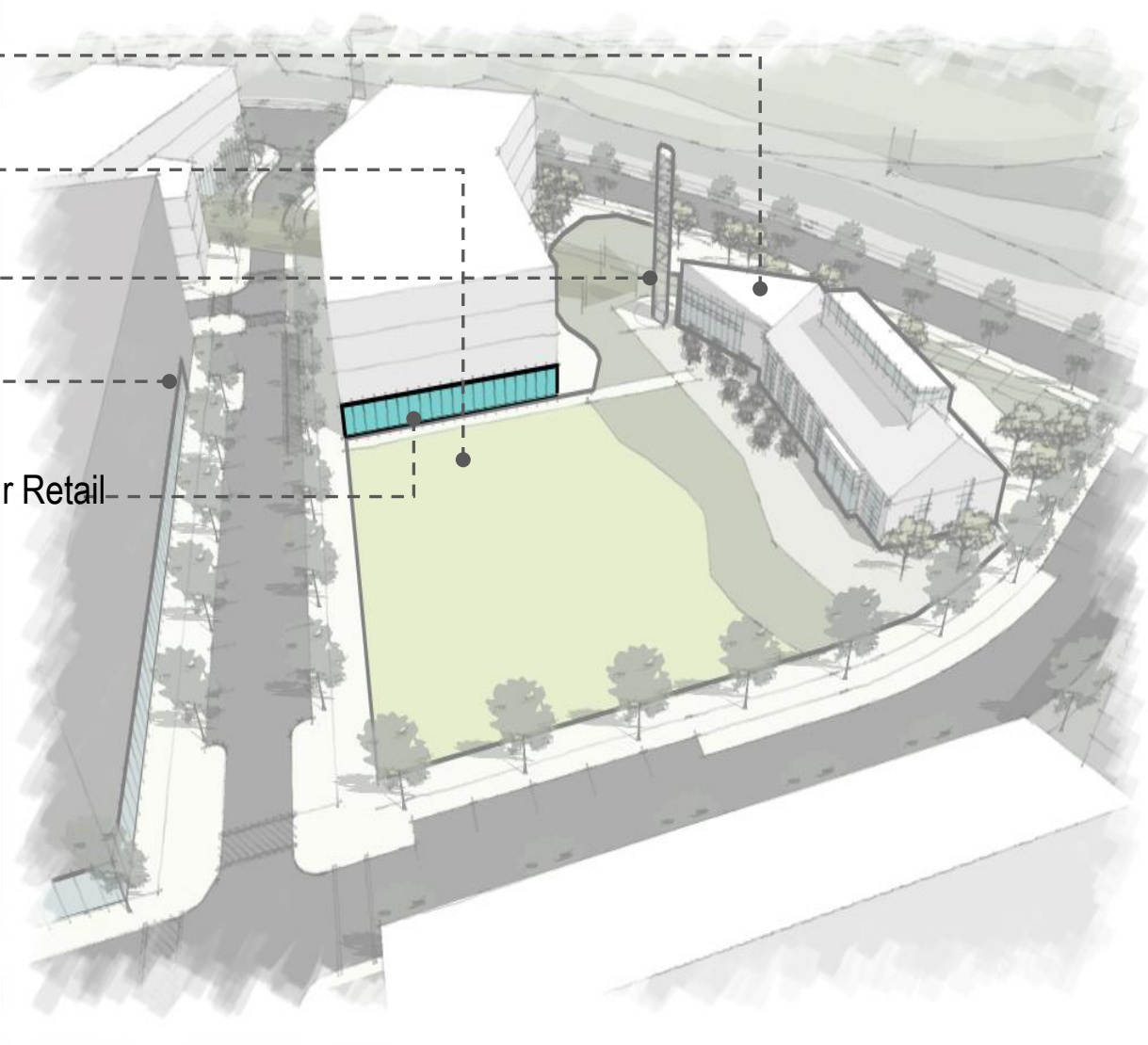
Convert Existing Garage into Central Hall

Create Active & Beautiful Village Green

Light / Sign / Event Tower

Hotel Garage w/ Co-working Space

Ofc/ Research Bldg w/ Ground-Flr Retail



CREATING A COMMUNITY HEART

Convert Existing Garage into Central Hall

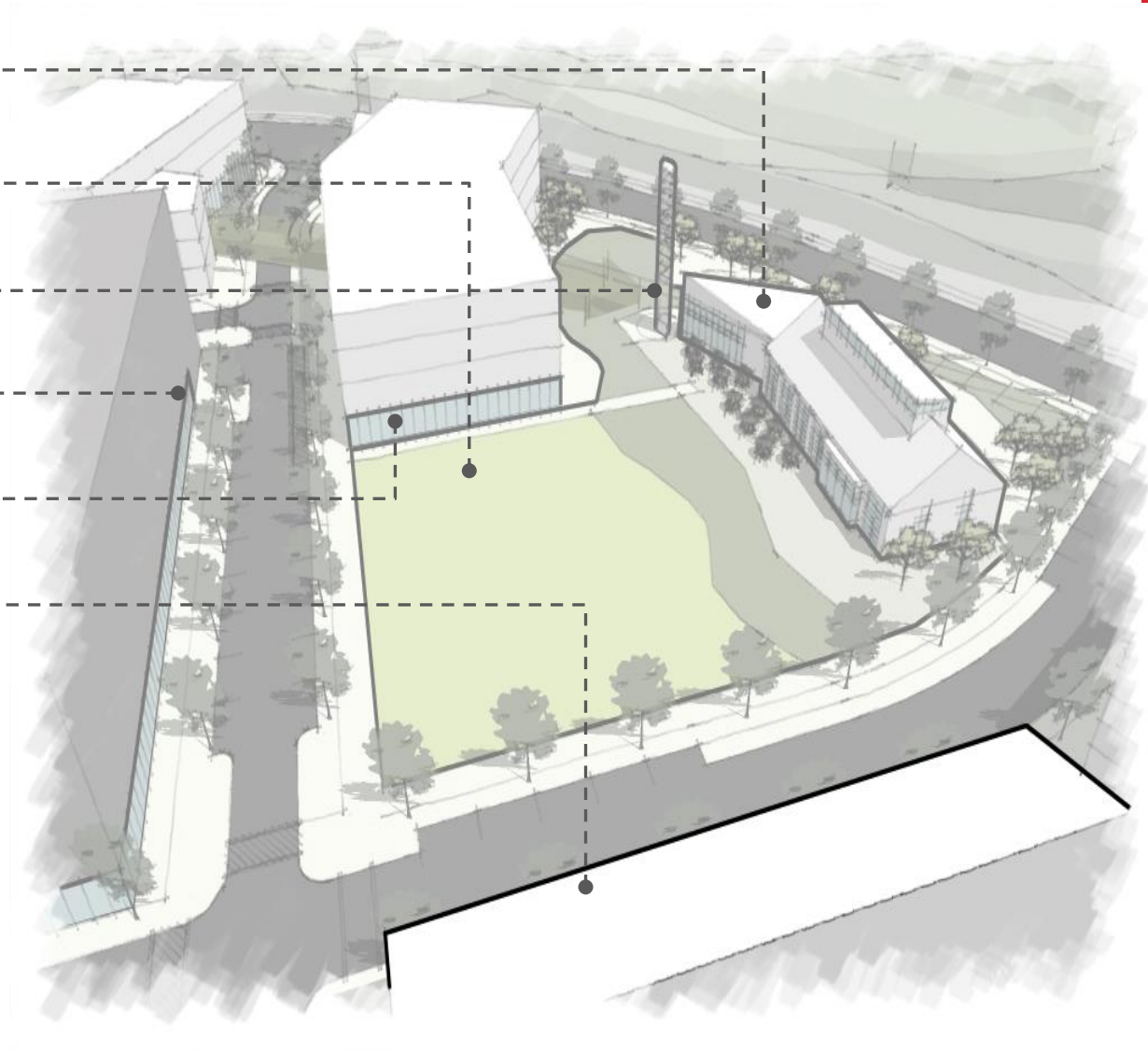
Create Active & Beautiful Village Green

Light / Sign / Event Tower

Hotel Garage w/ Co-working Space

Research Building w/ Ground-Flr Retail

Housing Wrapping Garage



CREATING A COMMUNITY HEART

Renovate Existing Garage into Central Hall

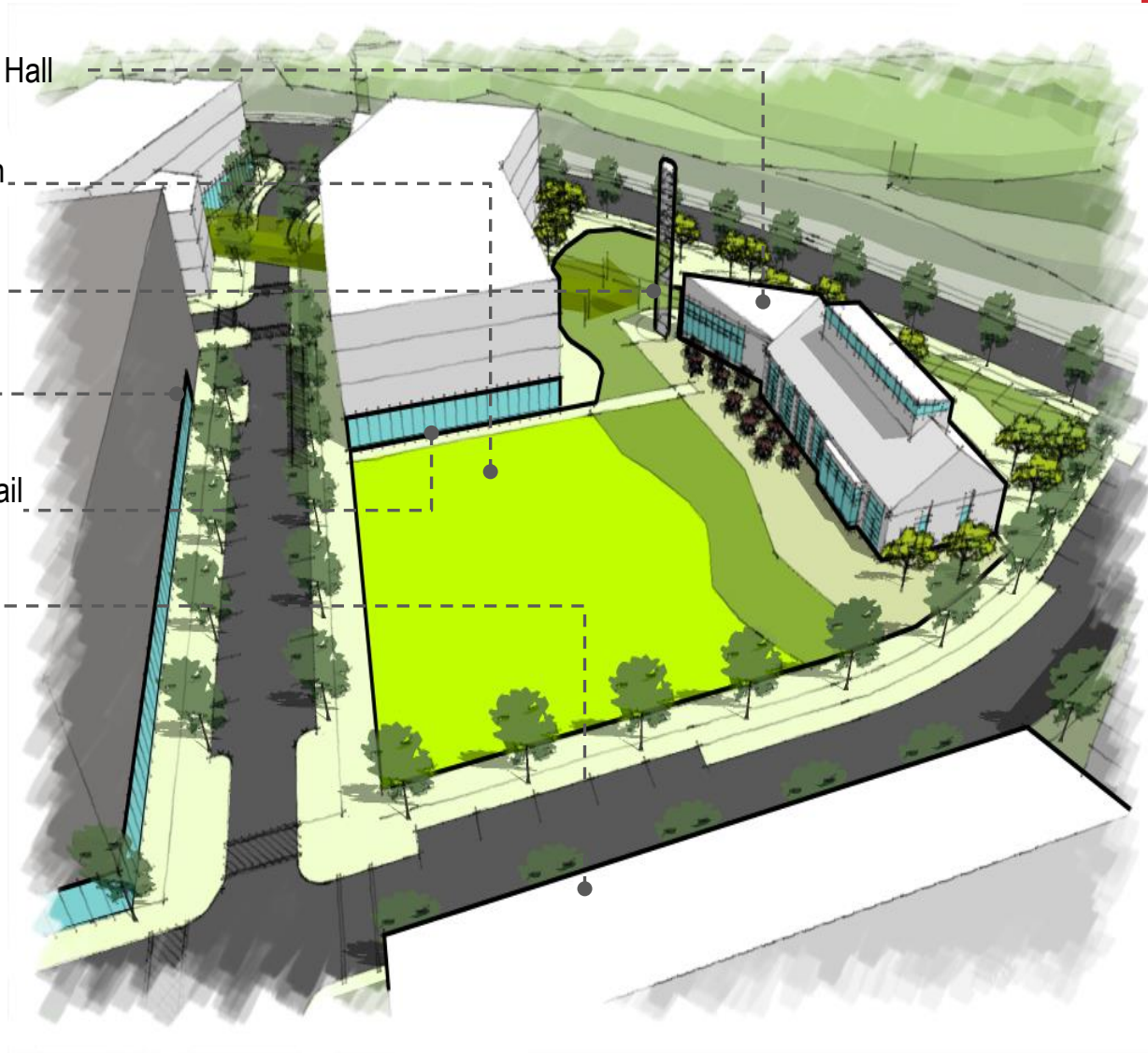
Create Active & Beautiful Village Green

Light / Sign / Event Tower

Hotel Garage w/ Co-working Space

Ofc/ Research Bldg w/ Ground-Flr Retail

Housing Wrapping Garage



SCHEME ITERATIONS | PROPOSED



RESEARCH PARK TENANTS

Environmental & Earth Sciences

- **NOAA – National Center for Weather and Climate Prediction**
- **UMD/Pacific Northwest National Lab Joint Global Change Research Institute**
- **Earth System Science Interdisciplinary Center (ESSIC)**

Language & National Security

- **Center for Advanced Study of Language (CASL)**
- **National Foreign Language Center (NFLC)**
- **Raytheon**
- **Deep Thought 2 Supercomputer Center**
- **Intelligence Advanced Research Projects Activity (IARPA)**

TENANTS CONT.

U.S. Government

- **Food Safety and Agriculture Policy**
- **USDA Animal and Plant Health Inspection Service**
- **UMD/FDA Joint Institute for Food Safety and Applied Nutrition**
- **FDA Center for Food Safety and Applied Nutrition**

Other

- **American Center for Physics (ACP)**
- **Fraunhofer Center for Experimental Software Engineering**
- **Mid-Atlantic Crossroads (MAX)**
- **Optimal Solutions Group**
- **Technology Ventures Building (TVB)**

RESEARCH PARK – KEY STATS

- **Approximately 4,000 employees**
- **USDA: 1,100**
- **American Center for Physics: 246**
- **NOAA: 800**
- **FDA CFSAN: 765**
- **IARPA: 300**
- **UMD Research Park accounted for 26% of recent construction in Prince George's County**

OPPORTUNITY

- **124 Acres**
- **1.5M SF Capacity**
- **Build-to-suit & custom design buildings from 30k to 500k SF**
- **Specialized research facilities customized to needs**
- **Multiple deal structure alternatives**
- **Walking distance to DC Metro and MARC/shuttle services**
- **University owned real estate surrounding Hotel**
- **Whole Foods and other retail coming online**
- **Extending center of campus to Route 1/Baltimore Ave**

CAPITALIZING ON INNOVATION

