

# 2011 Vehicle Registration Data Analysis

Transportation Planning Board  
November 16, 2011

# 2011 Vehicle Registration Data Analysis

## Regional Total

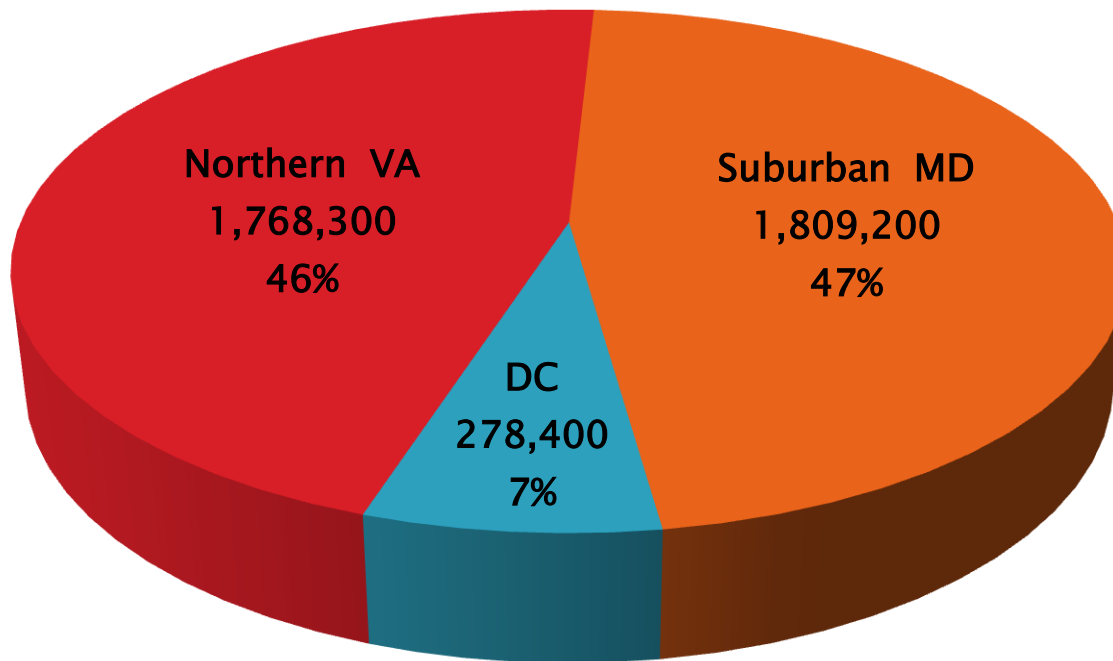
State	2005	2008	2011	2011-08 Difference	2011-08 % Difference
DC	258,100	270,600 *	278,400	7,800	2.9%
Suburban MD	1,684,500	1,734,900	1,809,200	74,300	4.3%
Northern VA	1,574,100	1,699,200	1,768,300	69,100	4.1%
<b>REGION</b>	<b>3,516,700</b>	<b>3,704,700</b>	<b>3,855,900</b>	<b>151,200</b>	<b>4.1%</b>

\* Estimate derived by averaging and rounding the January 2008 (269,579) and the January 2009 (271,665) figures reported by DDOE

Suburban MD	Northern VA
Calvert Co.	City of Alexandria
Charles Co.	Arlington Co.
Frederick Co.	Fairfax Co.
Montgomery Co.	Loudoun Co.
Prince George's Co.	Prince William Co.

# 2011 Vehicle Registration Data Analysis

## Regional Total



# 2011 Vehicle Registration Data Analysis

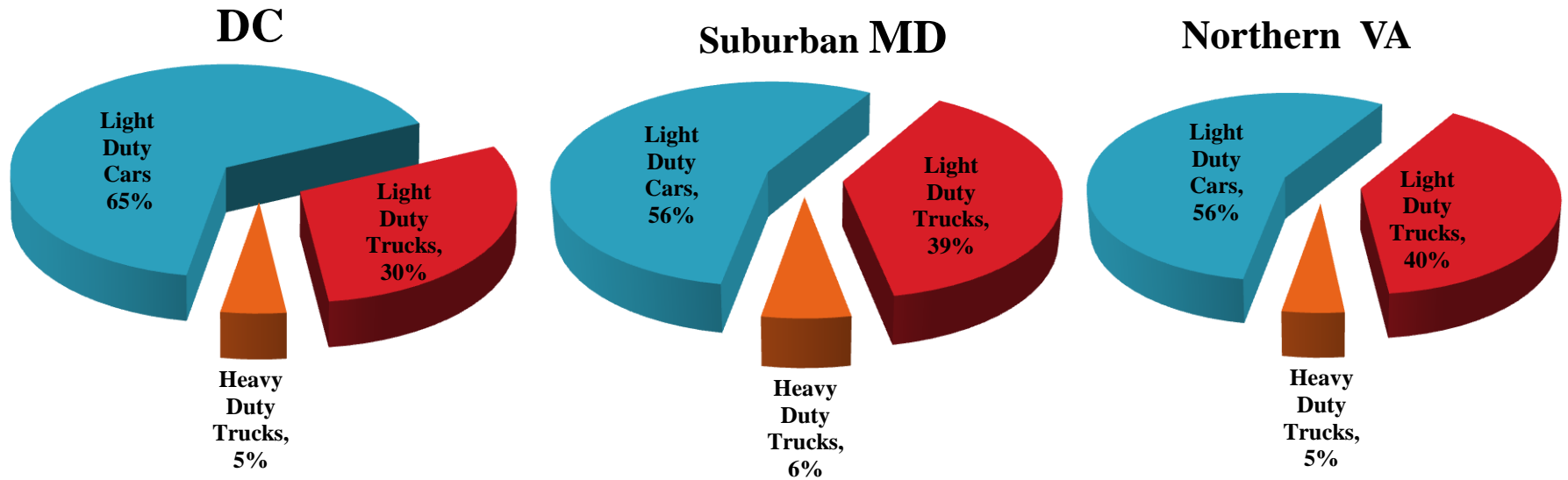
## State Totals

State	Vehicle Category	Number of Decoded Records *		
		2005	2008	2011
<b>DC</b>	Light Duty Cars/Motorcycles	178,600	161,700	179,400
	Light Duty Trucks	63,200	67,100	82,400
	Heavy Duty Vehicles/Buses	8,900	10,600	13,100
	<b>TOTAL</b>	<b>250,800</b>	<b>239,400</b>	<b>274,900</b>
<b>Suburban MD</b>	Light Duty Cars/Motorcycles	936,000	935,700	961,700
	Light Duty Trucks	568,100	616,400	666,300
	Heavy Duty Vehicles/Buses	85,200	95,400	99,900
	<b>TOTAL</b>	<b>1,589,400</b>	<b>1,647,500</b>	<b>1,727,900</b>
<b>Northern VA</b>	Light Duty Cars/Motorcycles	889,500	913,300	986,100
	Light Duty Trucks	549,200	608,700	697,800
	Heavy Duty Vehicles/Buses	69,800	73,600	79,600
	<b>TOTAL</b>	<b>1,508,500</b>	<b>1,595,600</b>	<b>1,763,500</b>
<b>REGION</b>	Light Duty Cars/Motorcycles	2,004,100	2,010,800	2,127,200
	Light Duty Trucks	1,180,600	1,292,200	1,446,500
	Heavy Duty Vehicles/Buses	164,000	179,600	192,500
	<b>TOTAL</b>	<b>3,348,700</b>	<b>3,482,500</b>	<b>3,766,200</b>

\* 95 percent or higher of the registered vehicle records were successfully decoded

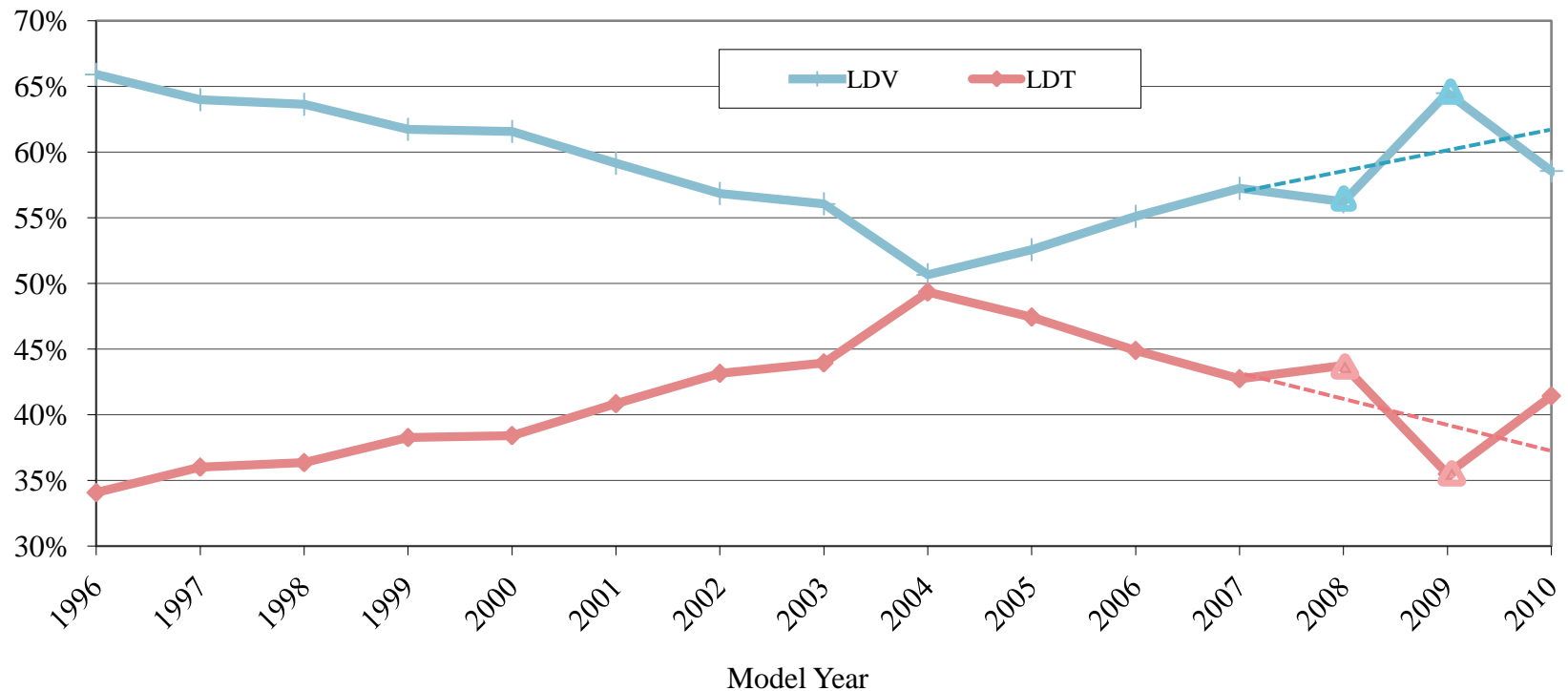
# 2011 Vehicle Registration Data Analysis

## State Totals



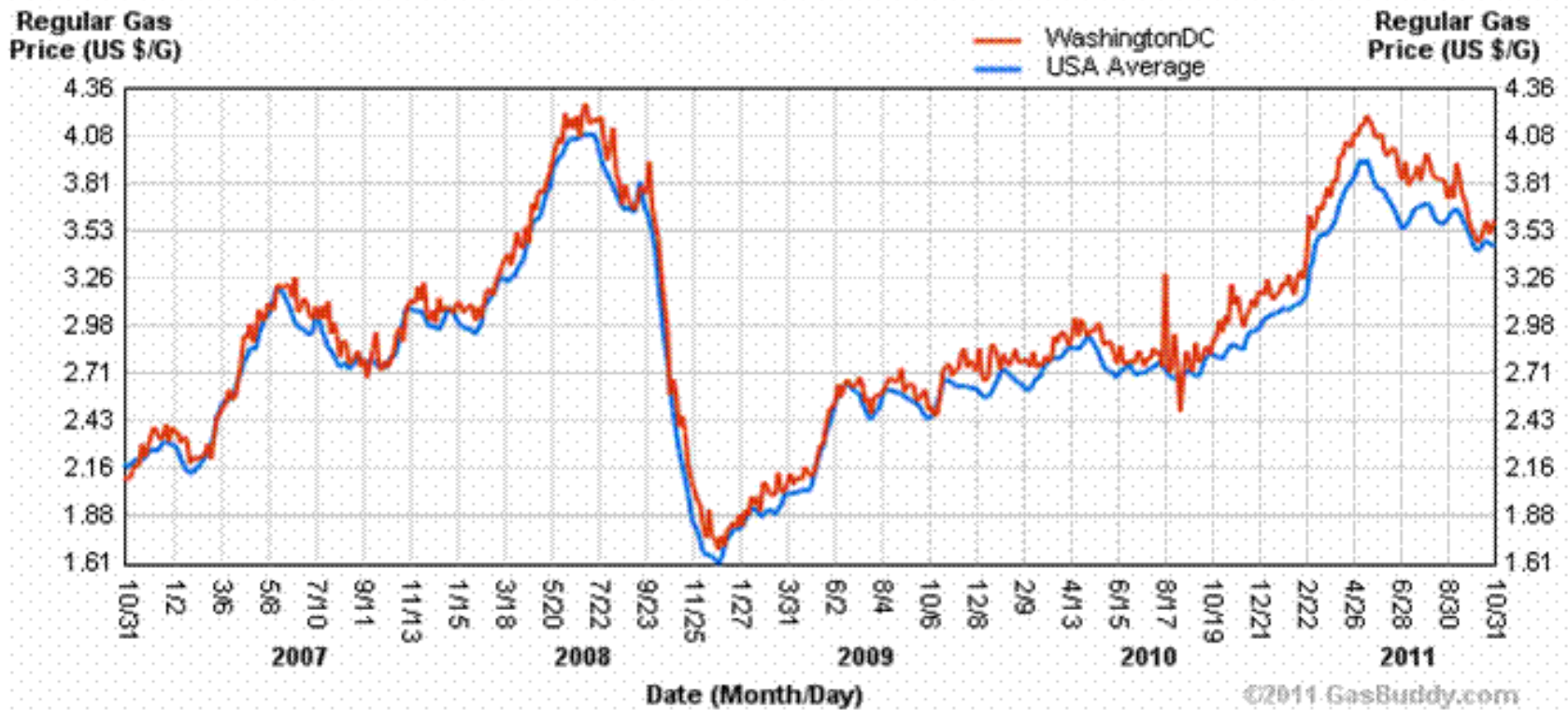
# 2011 Vehicle Registration Data Analysis

## Light Duty Vehicles (LDV) vs Light Duty Trucks (LDT) (1996-2010)



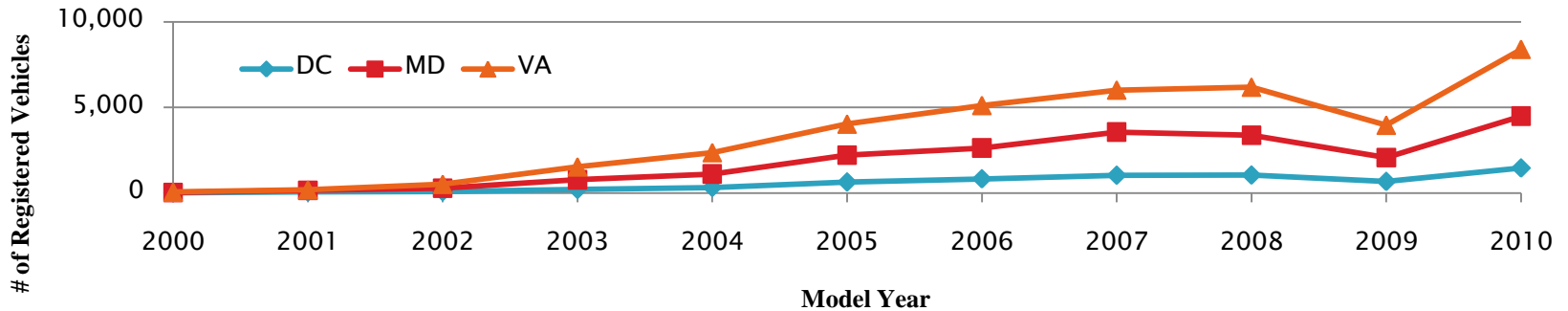
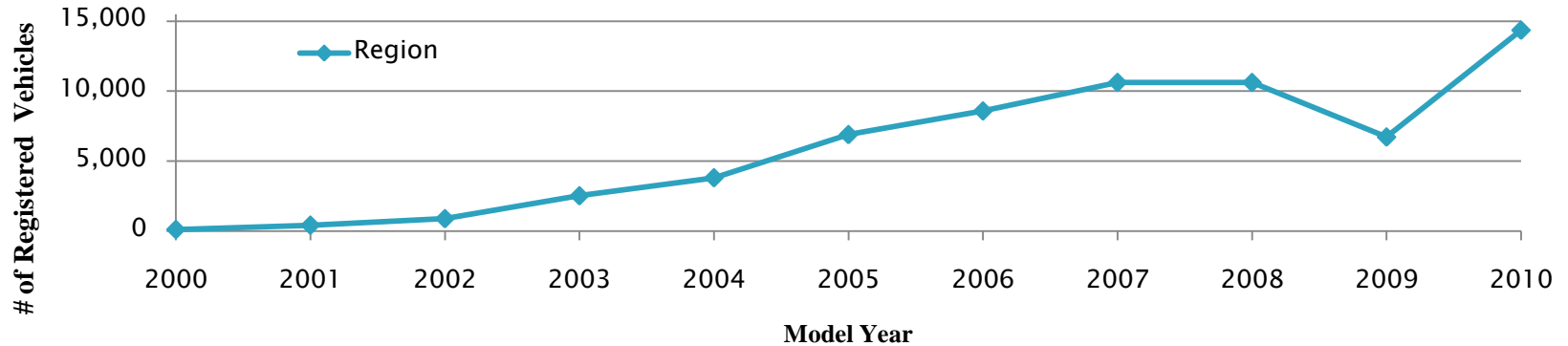
# 2011 Vehicle Registration Data Analysis

## Gasoline Price Fluctuations



# 2011 Vehicle Registration Data Analysis

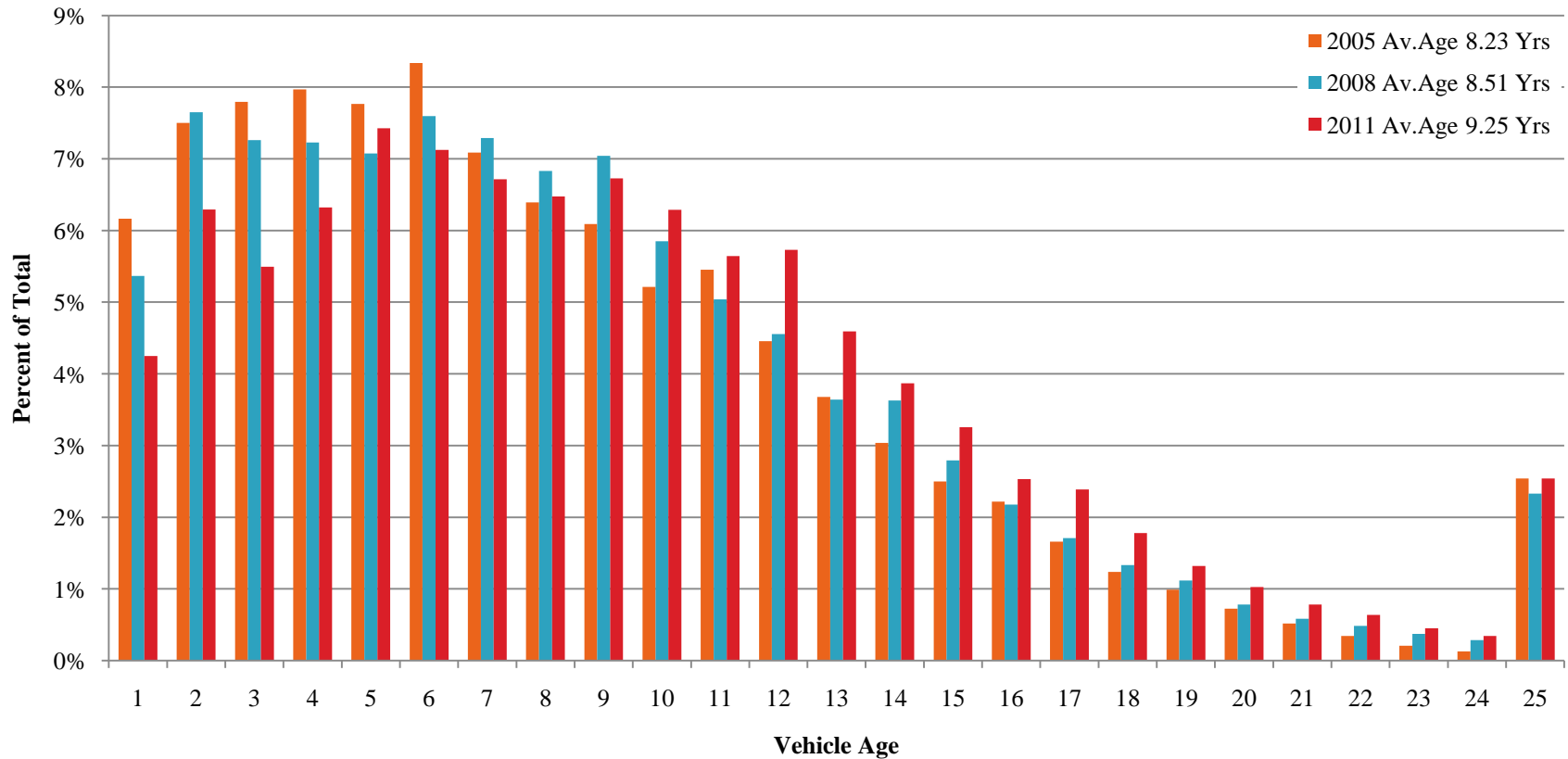
## Popularity of Hybrids (2000-2010)





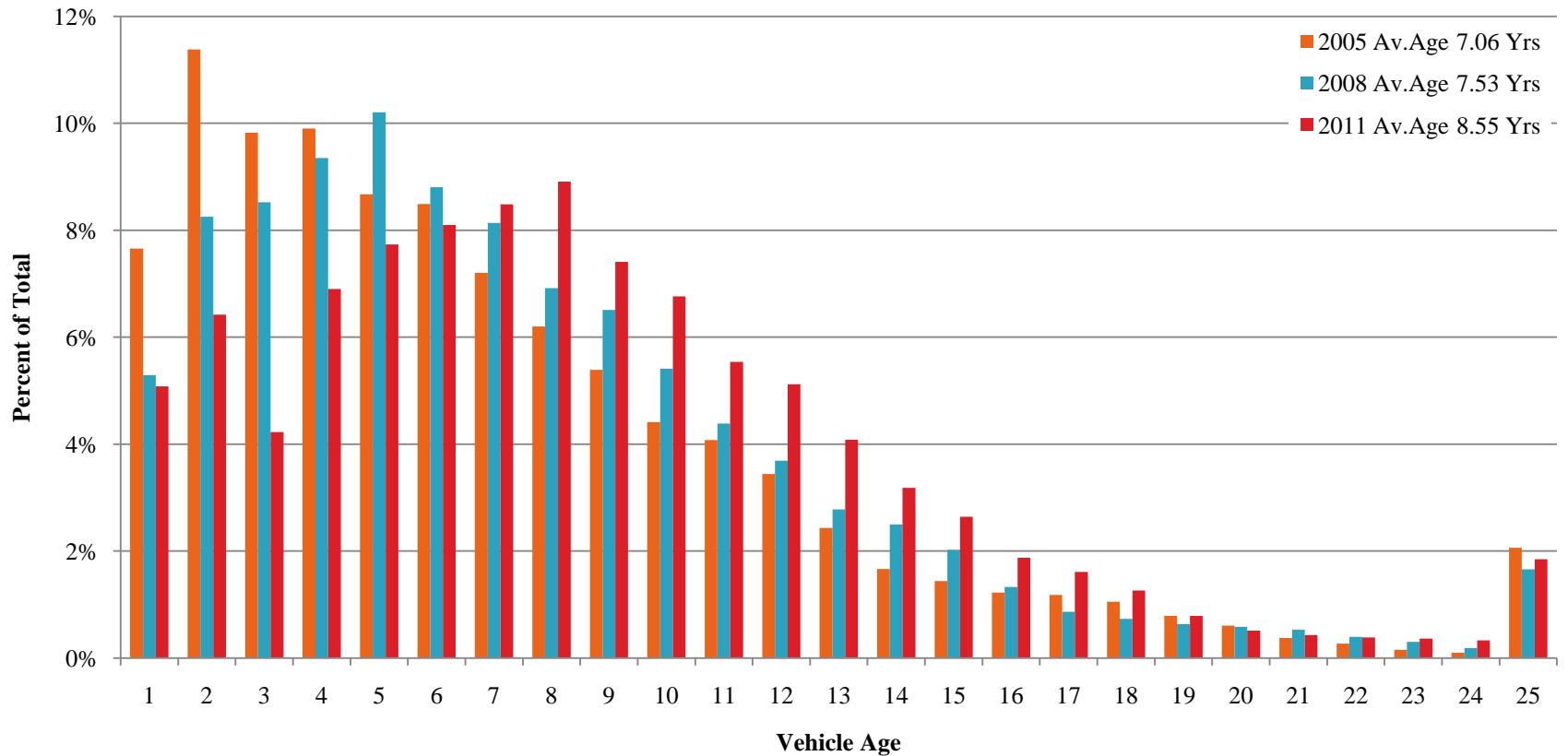
# 2011 Vehicle Registration Data Analysis

## Vehicle Fleet Age Distribution – Light Duty Vehicles



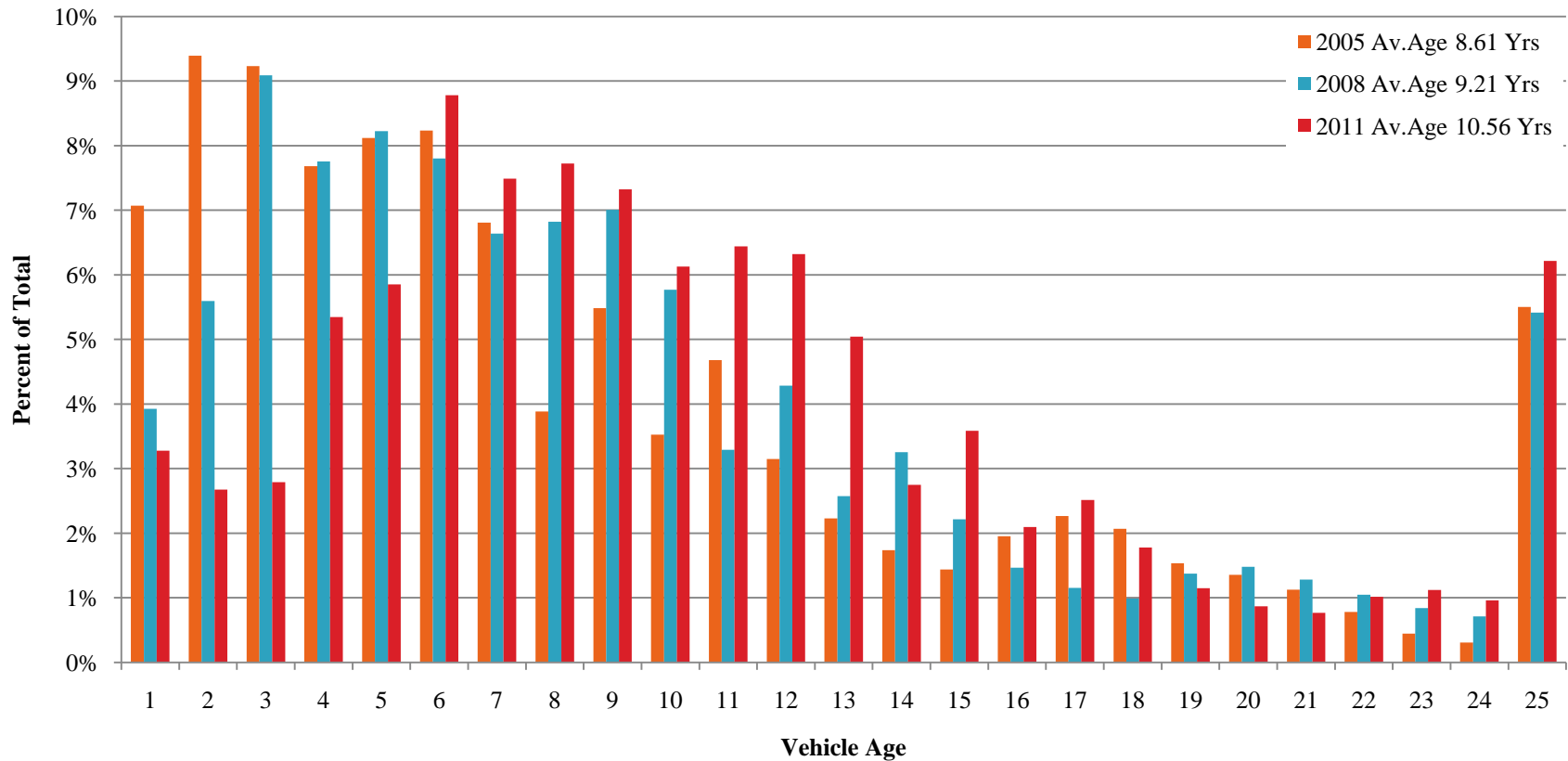
# 2011 Vehicle Registration Data Analysis

## Vehicle Fleet Age Distribution – Light Duty Trucks



# 2011 Vehicle Registration Data Analysis

## Vehicle Fleet Age Distribution – Heavy Duty Vehicles



# 2011 Vehicle Registration Data Analysis

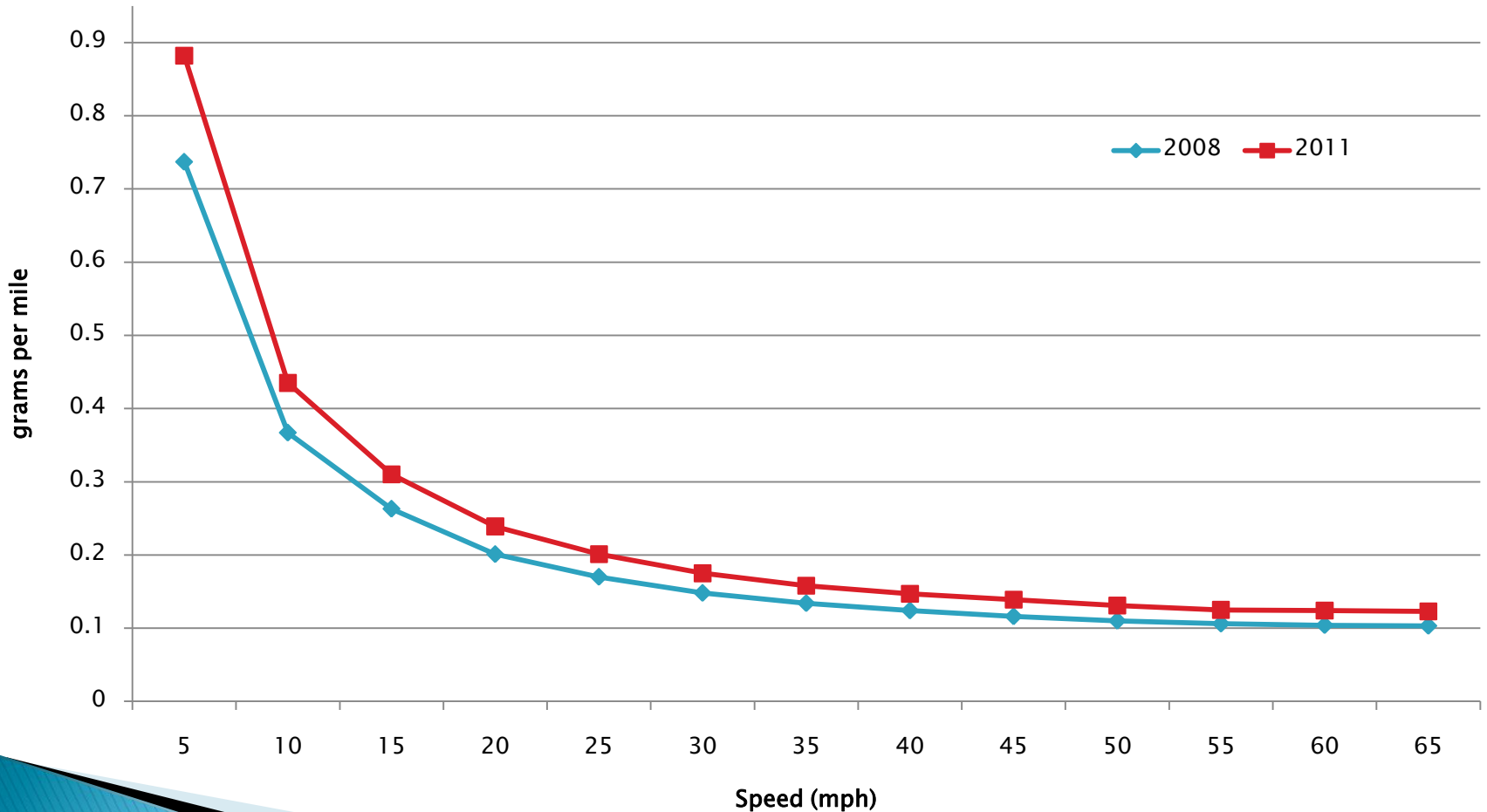
## Average Age of the Regional Vehicle Fleet

	Average Vehicle Age			
Year	Light Duty Vehicles (LDV)	Light Duty Trucks (LDT)	Heavy Duty Vehicles (HDV)	All Vehicle Types
2005	8.23	7.06	8.61	7.84
2008	8.51	7.53	9.21	8.18
2011	9.25	8.55	10.56	9.05
2005-08 Difference	<b>0.28</b>	<b>0.47</b>	<b>0.60</b>	<b>0.34</b>
2008-11 Difference	<b>0.74</b>	<b>1.02</b>	<b>1.35</b>	<b>0.87</b>
2005-11 Difference	<b>1.02</b>	<b>1.49</b>	<b>1.95</b>	<b>1.21</b>

# 2011 Vehicle Registration Data Analysis

## VOC Emission Rates

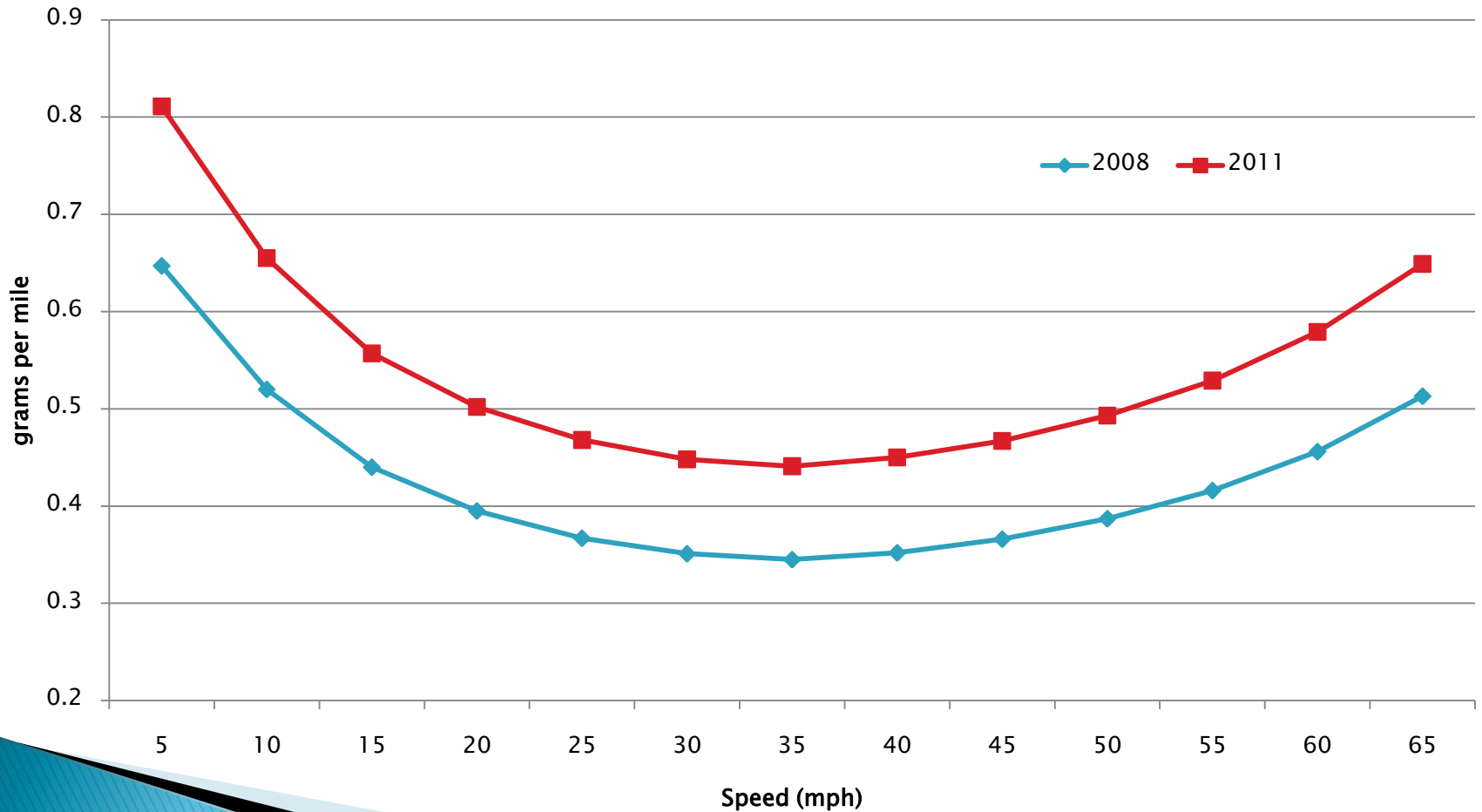
Yr: 2016 Frederick Co.



# 2011 Vehicle Registration Data Analysis

## NOx Emission Rates

Yr: 2016 Frederick Co.



# 2011 Vehicle Registration Data Analysis

## PM2.5 Emission Rates

Yr: 2016 Frederick Co.

