

FY2019 MEMBER DUES AND REGIONAL FEES

**Working Together to Shape Strong Communities
and a Better Region**

COG Budget and Finance Committee
October 11, 2017



Metropolitan Washington
Council of Governments

Table of Contents

Introduction	Page 3
FY2019 Member Dues	Page 8
FY2019 Regional Water and Environmental Funds	Page 21
Summary: Member Dues and Regional Fees	Page 27
Appendix: Tables by Jurisdiction	Page 28

COG: The Hub for Regional Partnership

- The Metropolitan Washington Council of Governments (COG) is an independent, nonprofit association with a membership of more than 300 elected officials from 24 local governments, the Maryland and Virginia state legislatures, and U.S. Congress.
- Metropolitan Washington is a diverse region, home to more than five million people and one of the nation's largest economies.
- COG is home to the National Capital Region Transportation Planning Board (TPB), the region's federally designated Metropolitan Planning Organization, and the Metropolitan Washington Air Quality Committee.
- More than **1,500 officials and experts** come to COG each month to make connections, share information, and develop solutions to the region's major challenges.



COG's Region Forward Vision

For nearly 60 years, COG has been the hub for regional partnership.

Guided by the **Region Forward Vision**, COG continually strives to make metropolitan Washington more prosperous, accessible, livable, and sustainable.

Together, we're working toward:

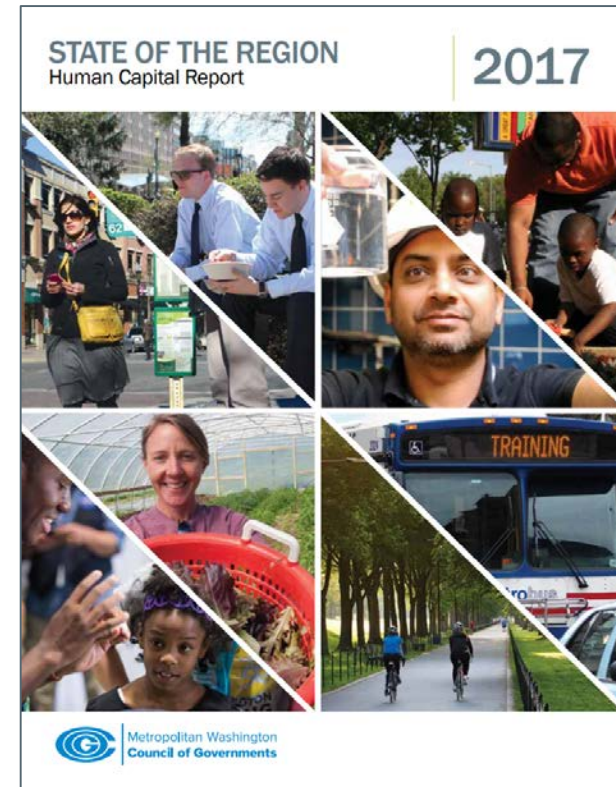
- Walkable, mixed-use communities with housing and transportation choices
- Healthy air, water, and land, abundant renewable energy sources, and a smaller carbon footprint
- Becoming a resilient economy and preeminent knowledge hub
- Vibrant, safe, and healthy neighborhoods



Bethesda is one of the region's 141 Activity Centers, locations identified by COG and local governments that will best accommodate the majority of the region's future growth. (Ephien, [Flickr](#))

Year-Round Member Benefits

- Monthly meetings where members and subject matter experts **make connections**.
- Access to COG research, publications, data, and planning documents.
- Consultation with COG staff and contacts, primed to help members think regionally, and act locally.
- Ongoing participation in local and regional forums, conferences, and a voice in shaping regional priorities and actions.



COG's State of the Region: Human Capital Report gave area leaders new insight into one of the region's greatest assets—the talents, skills, and abilities of area residents.

Members Engage in Regional Planning

COG supports policy and technical committees that serve the interests of its member jurisdictions and the entire region, including:

- Anacostia Watershed Steering Committee
- **Chesapeake Bay & Water Resources Policy Committee**
- Chief Administrative Officers Committee
- Chief Information Officers Committee
- Chief Purchasing Officers Committee
- Child Welfare Directors
- Clean Air Partners Board of Directors
- **Climate, Energy, and Environment Policy Committee**
- Community Engagement Campaign
- Community Forestry Network
- Emergency Managers Committee
- Fire Chiefs Committee
- Health Officials Committee
- Homeless Services, Planning, & Coordinating Committee
- Housing Directors Advisory Committee
- **Human Services & Public Safety Policy Committee**
- I-95 Landfill Committee
- **NCR Emergency Preparedness Council**
- Police Chiefs Committee
- Recycling Committee
- **Region Forward Coalition**
- Regional Tree Canopy Workgroup
- Snow/Winter Weather Briefings Committee
- Solid Waste Managers Group
- Substance Abuse & Mental Health Committee
- Water Resources Technical Committee

COG Leadership and Members

COG Corporate Officers

David Tarter, President
City of Falls Church

Phil Mendelson, 1st Vice President
District of Columbia

Karen Toles, 2nd Vice President
Prince George's County

Kate Stewart, Secretary-Treasurer
City of Takoma Park

COG Board of Directors Leadership

Kenyan McDuffie, Chairman
District of Columbia

Matt Letourneau, 1st Vice Chairman
Loudoun County

Derrick L. Davis, 2nd Vice Chairman
Prince George's County

Members

District of Columbia
City of Bladensburg
City of Bowie
Charles County
City of College Park
Frederick County
City of Frederick
City of Gaithersburg
City of Greenbelt
City of Hyattsville
City of Laurel
Montgomery County
Prince George's County
City of Rockville
City of Takoma Park
City of Alexandria
Arlington County
Fairfax County
City of Fairfax
City of Falls Church
Loudoun County
City of Manassas
City of Manassas Park
Prince William County

Transportation Planning Board Leadership

Bridget Newton, Chairman
City of Rockville

Charles Allen, 1st Vice Chairman
District of Columbia

Jay Fiset, 2nd Vice Chairman
Arlington County

Metropolitan Washington Air Quality Committee Leadership

Hans Riemer, Chairman
Montgomery County

Robert Day, 1st Vice Chairman
City of College Park

Redella Pepper, 2nd Vice Chairman
City of Alexandria

Brandon Todd, 3rd Vice Chairman
District of Columbia

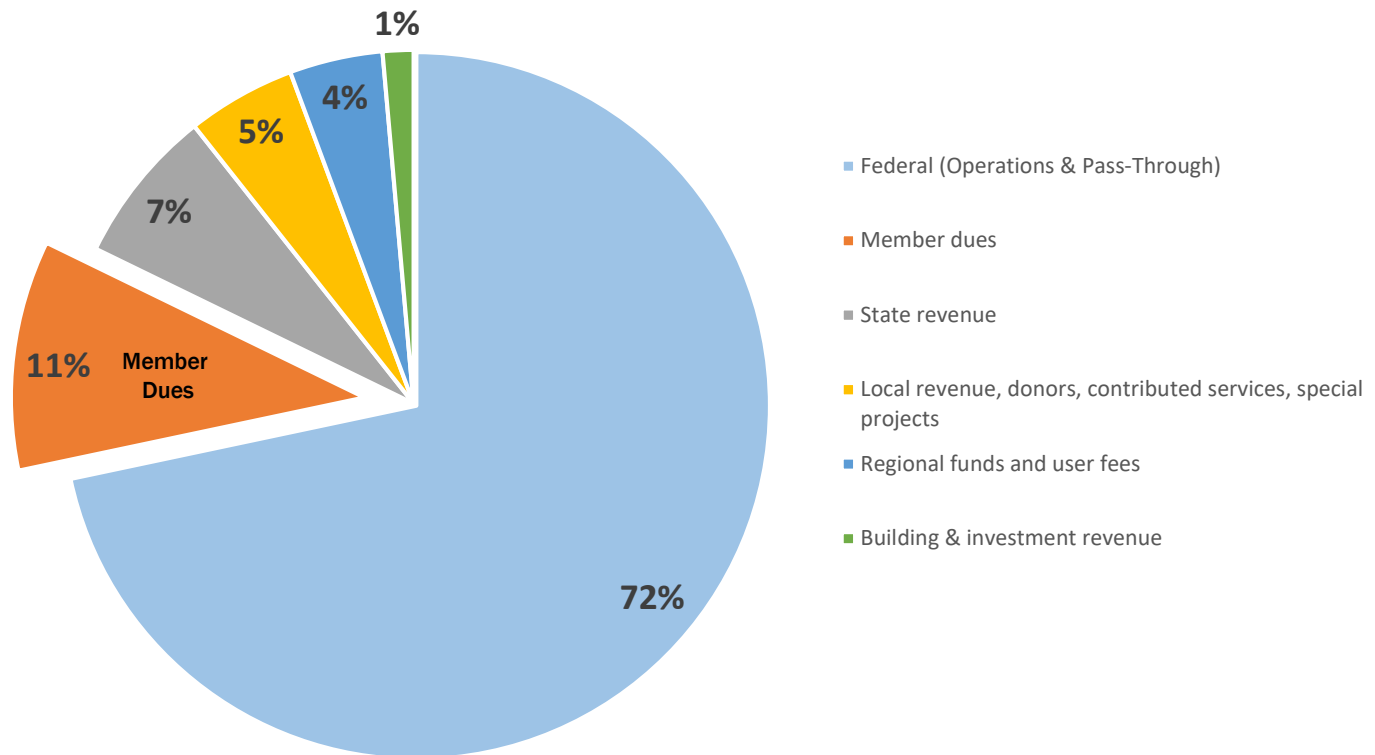


Member Dues

- Member Dues Leveraging Federally Sourced Funds
- Member Dues Providing Primary Program Support
- Member Dues Leveraging Additional Resources
- Additional Member Services, Benefits, Outreach, and Forums

As part of the development of Visualize 2045, the new federally required long-range transportation plan for the region, the National Capital Region Transportation Planning Board solicited public input to learn about people's daily travel experiences (COG).

Member Dues Provide 11% of Total COG Resources



Member Dues Leveraging Federally Sourced Funds

Deliverables:

- Conduct planning activities that ensure flow of federal transportation funds to local, regional, and state transportation agencies.
- Convene and staff the Transportation Planning Board, with representation from all member jurisdictions.
- Meet the requirements that allow member jurisdictions to receive and utilize Homeland Security funding.
- Raise awareness to reduce air pollution through voluntary actions.
- Conduct the biennial regional airport survey to forecast and update ground access planning.
- Implement the 2017-2020 Climate and Energy Action Plan.



In 2017, Clean Air Partners, a public-private partnership created by COG and the Baltimore Metropolitan Council, celebrated 20 years of educating the greater metropolitan Baltimore-Washington region about the health risks associated with poor air quality and the impact of everyday actions on the environment. (COG)

Member Dues Leveraging Federally Sourced Funds

- 39% of Member Dues
- For every \$1.00 in member dues, the region receives \$8.00 in direct federal funding for transportation planning.

	Member Dues	Direct Federal	District & States	Other	Total Resources
Unified Planning Work Program	1,172,400	9,379,000	1,172,400		11,723,800
Regional Air Quality Attainment Planning (1)	174,600		174,600		349,200
Homeland Security Staff Support	192,900	2,193,700	-		2,386,600
Clean Air Partners	56,000		454,000	70,000	580,000
Air Quality Index, Monitoring & Forecasting	45,000	25,000			70,000
Continuous Airport Systems Planning	25,000	225,000			250,000
Total	1,665,900	11,822,700	1,801,000	70,000	15,359,600

(1) The Unified Planning Work Program provides an additional \$176,100 to support Regional Air Quality Attainment Planning.

Member Dues Providing Primary Program Support

Deliverables:

Public Safety

- Convene regional Fire Chiefs, Corrections Officers, Emergency Management Directors, Police Chiefs, and other officials to address issues of mutual concern.
- Coordinate services to address emergency and severe weather situations.

Health and Human Services

- Conduct annual point-in-time count of homeless persons, with results and analysis.
- Help children in foster care find permanent homes.
- Convene regional health directors and coordinate response to health emergencies.



In 2017, COG convened policymakers and public health and safety professionals from across the District, Maryland, and Virginia to address the growing opioid and substance abuse epidemic (COG).

Member Dues Providing Primary Program Support

- 25% of Member Dues
- \$1.1 million supports regional coordination and planning efforts, where other funding is limited or not available.
- Focus in FY2018 and FY2019 on broadening the funding base for these programs

	Member Dues	Other	Total
Public Safety Planning (1)	419,800	48,000	467,800
Health Planning Coordination	296,000	22,400	318,400
Housing Opportunities	210,400		210,400
Child Welfare	146,300	50,000	196,300
Total	1,072,500	120,400	1,192,900
<i>(1) The Unified Planning Work Program provides an additional \$65,400 to support Public Safety Planning</i>			

Member Dues Leveraging Additional Resources

Deliverables:

- Prepare annual employment, population, and household forecasts by traffic analysis zone.
- Advance regional efforts to restore local waterways, reduce air pollution, increase renewable energy use, promote recycling, and enhance and preserve green space and agriculture.
- Conduct annual public education, awareness, and behavioral change campaign to respond to the challenges of pedestrian and bicycle safety.

See also the **Regional Environmental and Water Funds** section starting on page 21.



In August 2017, COG hosted a regional meeting with food policy councils, agriculture marketing specialists, and others at the UMD Terp Farm in Upper Marlboro as part of its regional food systems work (COG).

Member Dues Leveraging Additional Resources

- 22% of Member Dues
- \$922,600 in Member Dues leverages \$4.8 million from various funding sources, and provides baseline resources to ensure continuity of programs

	Member Dues	Federal	District & States	UPWP Funds (1)	Other (2)	Total
Regional Environmental Resources Planning	417,200	119,500	-		839,300	1,376,000
Regional Planning & Coordination (3)	234,200		-	625,000	-	859,200
Anacostia Watershed Program & Projects	91,000	3,000	341,100		625,300	1,060,400
Regional Water Resources Management	97,200	-	-		1,279,600	1,376,800
Street Smart Safety Education Campaign	58,000	-	654,500		150,000	862,500
Agriculture and Forestry Management	25,000	-			131,300	156,300
Total	922,600	122,500	995,600	625,000	3,025,500	5,691,200
<i>(1) Included in the Unified Planning Work Program total on page 11</i>						
<i>(2) Includes Regional Environmental and/or Regional Water Funds - See separate section starting on page 21</i>						
<i>(3) The Unified Planning Work Program provides an additional \$514,100 to support Regional Planning & Coordination.</i>						

Additional Membership Services, Benefits, Outreach, and Forums

Deliverables:

- Save members money through COG's Cooperative Purchasing Program, including cooperative bids and contract riding opportunities. Vendor-paid fees are helping to support the budget.
- Ensure that Metro has the funding it needs to achieve a state of good repair and deliver a safe and reliable transportation system.
- Support efforts to strengthen and diversify the region's economy.
- Develop Regional Planning Guidance to inform local decisionmakers about homeland security initiatives, strategies, and priorities.
- Monitor the cross-section between substance abuse, mental health, and diversion.
- Complete the plan for achieving regional greenhouse gas emissions reduction goals.



A subscriber radio contract is being finalized for the region's Police and Fire agencies, and could save millions of dollars over the next decade. (Chris Goldberg/Flickr)

Additional Member Services, Benefits, Outreach, and Forums

- 13% of Member Dues
- \$562,100 is available to support COG as a membership organization by coordinating and conducting cooperative purchasing, providing leadership training, convening and staffing the Board of Directors and other regional officials, sponsoring special studies and reports, creating and maintaining regional and national partnerships, and representing regional interests to the public and media.

	Member Dues	Bldg & Interest Revenue	Coop Purch Net Revenue (1)	Other	Total
Member Relations, Governance, Special Reports, Cooperative Purchasing, Public/Media Relations & Communications	493,200	617,700	97,300	7,200	1,215,400
Institute for Regional Excellence	68,900			106,800	175,700
Total	562,100	617,700	97,300	114,000	1,391,100
<i>(1) Cooperative Purchasing service fees are expected to exceed program expenditures.</i>					

FY2019 Member Dues

The FY2019 member dues increase is based on a forecast of general operating expenses and estimated changes in revenue and federal match requirements.

COG Member Dues

Increase of \$164,973 (4.07%), from \$4,058,169 to \$4,223,142

Basis for the increase: Increase in required match for Federal programs

A table with the dues amount for each jurisdiction is included in the Appendix.

Dues increase factors:

Regional population increase (adjusted for 5% cap)	\$ 33,144
New members – Hyattsville and Laurel	\$ 27,075
Maryland county adjustment	\$ 31,669
Per capita rate increase of 1.5 cents	<u>\$ 73,085</u>
	<u>\$164,973</u>

FY2019 Member Dues by Category

Member Dues Leveraging Federally Sourced Funds	1,665,900	39%
Member Dues Providing Primary Program Support	1,072,500	25%
Member Dues Leveraging Additional Resources	897,600	21%
Additional Member Services, Benefits, Outreach, & Forums	587,100	14%
	<hr/>	
Total Member Dues	4,223,100	
Rounding adjustment	42	
	<hr/>	
Total Member Dues FY2018	<u>4,223,142</u>	

Regional Water and Environmental Funds



Regional Water Fund

Deliverables:

- Represent the region in the Chesapeake Bay Program.
- Support local stormwater management programs and compliance with MS4 permits.
- Assist water utilities with implementing resiliency and source water protection plans.
- Manage the region's Water and Wastewater Agency Response Network (WARN).
- Run the Wise Water Use Campaign, including TapIt, Protect Your Pipes, and the Drug Take Back Campaign.
- Implement the regional drought management plan.



Regional Chesapeake Bay restoration efforts are making metropolitan Washington a better place to live, work, and play, “The Bay is only as healthy as the waterways that flow into it,” said COG Chesapeake Bay and Water Resources Policy Committee Chairman Daniel Sze in a *Washington Post* op-ed. (COG).

Regional Water Fund

- \$1.5 million (two-thirds paid by water and sewer utilities) to protect the area’s water quality and condition of its wastewater and drinking water infrastructure, and to represent the interests of local governments and water utilities as federal and state actions become increasingly complex and regulatory in nature.

	Regional Water Fund (1)	Service Fees and Sponsors	COG Member Dues (2)	Other	Total
Regional Water Resources Management	1,267,700	-	97,200	15,000	1,379,900
Drinking Water Quality, Security & Response	172,900	413,125			586,025
Community Engagement Campaign	42,700			115,000	157,700
Regional Water Fund FY2019	1,483,300	413,125	97,200	130,000	2,123,625
<i>(1) Two-thirds of the Regional Water Fund is paid by water and sewer utilities</i>					
<i>(2) Included in the Proposed Member Dues on page 15</i>					

Regional Environmental Fund

Deliverables:

- Provide analysis and assessments that support energy system planning for the region's critical infrastructure.
- Facilitate the NCR/DC Coastal Storm Risk Management Study.
- Run the regional Go Recycle and America Recycles Day campaigns.
- Coordinate the Food Policy Council and sustainable farm to table expansion, and update "What Our Region Grows."
- Improve the resiliency of the region's electrical supply systems to lessen disruptions and shorten restoration time.
- Expand availability of energy financing solutions.
- Support purchase and installation of electric vehicles and infrastructure.



The U.S. Army Corps of Engineers, Baltimore District, signed an agreement in 2017 with COG to begin an approximately \$3 million, three-year study on possible ways to address coastal flooding and storm damage across the region. (COG)

Regional Environmental Fund

- \$658,000 for special projects focused on facilitating the deployment of renewable energy, removing barriers to implementation of solutions, and installing technology solutions to reduce greenhouse gas emissions.

	Regional Environmental Fund	COG Member Dues (1)	Other	Total
Environmental Resources Planning	467,800	376,000		843,800
Recycling & Solid Waste	125,000			125,000
Agriculture & Forestry Management	45,200	25,000	86,100	156,300
Water Resources Management	20,000			20,000
Regional Environmental Fund FY2018	658,000	401,000	86,100	1,145,100
<i>(1) Included in the Proposed Member Dues on page 15</i>				

FY2019 Fee Structure: Regional Water and Environmental Funds

The fee increases for FY2019 are based on a forecast of general operating expenses and estimated changes in revenue and matching requirements for sponsor funds.

Regional Water Fund

Increase of \$57,976 (4.07%), from \$1,425,165 to \$1,483,141

Regional Environmental Fund

Increase of \$26,767 (4.07%), from \$658,044 to 684,811

Basis for increases:

- Regional fees are increased in proportion to the annual dues increase, to maintain the balance between funding sources.

A table with the fees for each jurisdiction is included in the Appendix.

Summary: FY2019 Member Dues and Regional Fees

	Proposed FY2019	Budget FY2018	Increase	%
Member Dues	4,223,142	4,058,169	164,973	4.07%
Regional Environmental Fund	684,811	658,044	26,767	4.07%
Regional Water Fund	1,483,141	1,425,165	57,976	4.07%
Total	6,391,094	6,141,378	249,716	4.07%
Population Estimate	5,986,487	5,931,562	54,925	0.93%
Per Capita Rate	0.755	0.740	0.015	2.03%
Population X Per Capita Rate	4,519,798	4,389,356	130,442	2.97%
Adjust for Adjunct Members (50%)	(10,623)	(10,008)	(615)	
Adjust for 5% Cap	(286,033)	(321,179)	35,146	
Member Dues Assessment	4,223,142	4,058,169	164,973	4.07%

Appendix

- Member Dues by Jurisdiction
- Regional Fund Fees by Jurisdiction

Member Dues by Jurisdiction

Metropolitan Washington Council of Governments				FY2018 Assessment Rate:	0.740	Increase of	
FY2019 Schedule of Membership Dues				FY2019 Assessment Rate:	0.755	2.03%	
Jurisdiction	POPULATION FIGURES			DUES AMOUNT			
	FY2018 Population Estimate	FY2019 Population Estimate	Compare to FY2018	FY2018 Adjusted Contribution (1)	FY2019 Adjusted Contribution (1)	FY2019 Increase (Decrease)	FY2019 Percent Increase
Alexandria, City of	153,200	156,100	1.89%	\$ 113,368	\$ 117,856	\$ 4,488	3.96%
Arlington County	224,000	226,600	1.16%	\$ 165,760	\$ 171,083	\$ 5,323	3.21%
Bladensburg, Town of (2)	9,900	9,640	-2.63%	\$ 3,348	\$ 3,516	\$ 167	5.00%
Bowie, City of	56,148	56,148	0.00%	\$ 41,550	\$ 42,392	\$ 842	2.03%
Charles County	157,835	159,550	1.09%	\$ 116,798	\$ 120,460	\$ 3,662	3.14%
College Park, City of (2)	32,301	32,275	-0.08%	\$ 23,151	\$ 24,309	\$ 1,158	5.00%
District of Columbia (2)	706,592	718,050	1.62%	\$ 519,566	\$ 542,128	\$ 22,562	4.34%
Fairfax County	1,146,284	1,150,074	0.33%	\$ 848,250	\$ 868,306	\$ 20,056	2.36%
Fairfax, City of	24,730	24,220	-2.06%	\$ 18,300	\$ 18,286	\$ (14)	-0.08%
Falls Church, City of (2)	13,900	14,000	0.72%	\$ 9,863	\$ 10,356	\$ 493	5.00%
Frederick County	246,972	250,627	1.48%	\$ 131,457	\$ 138,029	\$ 6,573	5.00%
Frederick, City of	69,328	70,428	1.59%	\$ 51,303	\$ 53,173	\$ 1,870	3.65%
Gaithersburg, City of	69,000	69,562	0.81%	\$ 51,060	\$ 52,519	\$ 1,459	2.86%
Greenbelt, City of	21,250	21,250	0.00%	\$ 15,725	\$ 16,044	\$ 319	2.03%
Hyattsville, City of	18,000	18,500	2.78%	\$ 6,660	\$ 6,984	\$ 324	4.86%
Laurel, City of	26,215	26,611	1.51%	\$ 19,399	\$ 20,091	\$ 692	3.57%
Loudoun County (2)	394,968	402,167	1.82%	\$ 256,227	\$ 269,039	\$ 12,811	5.00%
Manassas Park, City of (2)	16,805	16,805	0.00%	\$ 11,744	\$ 12,331	\$ 587	5.00%
Manassas, City of	41,764	41,483	-0.67%	\$ 30,905	\$ 31,320	\$ 414	1.34%
Montgomery County	1,061,116	1,059,800	-0.12%	\$ 669,681	\$ 703,165	\$ 33,484	5.00%
Prince George's County	909,535	912,016	0.27%	\$ 562,157	\$ 590,264	\$ 28,108	5.00%
Prince William County	444,577	462,342	4.00%	\$ 328,987	\$ 345,436	\$ 16,449	5.00%
Rockville, City of (2)	69,429	70,474	1.51%	\$ 50,186	\$ 52,695	\$ 2,509	5.00%
Takoma Park, City of (2)	17,713	17,765	0.29%	\$ 12,724	\$ 13,360	\$ 636	5.00%
Totals	5,931,562	5,986,487	0.93%	\$ 4,058,169	\$ 4,223,142	\$ 164,973	4.07%

(1) Adjusted Contribution is calculated by multiplying the adjusted population by the approved rate, limited to 5% annual increase per jurisdiction.
(2) For these jurisdictions, the FY2018 dues amount increase was capped at 5%.

Regional Fund Fees by Jurisdiction

FY2019 REGIONAL FUNDS Proposed Fee Schedule by Jurisdiction	Regional Water Fund	Regional Environmental Fund	Total Regional Funds
Alexandria, City of	29,837	20,981	50,818
Arlington County	43,312	30,457	73,769
Bladensburg, City of	-	-	-
Bowie, City of (WSSC)	10,732	-	10,732
Charles County	-	-	-
College Park, City of (WSSC)	6,169	4,338	10,507
District of Columbia (DC Water)	296,820	96,512	393,332
Fairfax County	296,820	154,580	451,400
Fairfax, City of	4,629	3,255	7,885
Falls Church, City of	2,676	1,882	4,558
Frederick County	-	-	-
Frederick, City of	-	-	-
Gaithersburg, City of (WSSC)	13,296	9,350	22,646
Greenbelt, City of (WSSC)	4,062	2,856	6,918
Hyattsville, City of	-	-	-
Loudoun County (Loudoun Water)	76,870	52,378	129,248
Manassas, City of	-	-	-
Manassas Park, City of	-	-	-
Montgomery County (WSSC)	296,820	125,085	421,905
Prince George's County (WSSC)	296,820	109,869	406,689
Prince William County	87,502	61,449	148,951
Rockville, City of	13,383	9,429	22,812
Takoma Park, City of (WSSC)	3,394	2,388	5,781
TOTAL	1,483,141	684,811	2,167,952

(1) Where indicated, water and sewer utilities support the Regional Water Fund on behalf of the local jurisdiction.

Chuck Bean

COG Executive Director

cbean@mwkog.org

Leta Simons

Chief Financial Officer

(202) 962-3362

lsimons@mwkog.org

mwkog.org

777 North Capitol Street NE, Suite 300
Washington, DC 20002