

FARM AD HOC COMMITTEE

Welcome and Committee Business Items

February 11, 2022

Welcome! The meeting will begin shortly.

Please enter your name and affiliation in the chat box.

Reminders for Today's Meeting

- Please enter your name and affiliation in the chat box for attendance.
- Please mute your line when you aren't speaking.
- Reduce background noise, movement, and distractions.
- FARM Members and Alternates:
 - Identify yourself before speaking for those joining by phone.
 - Use the chat box feature to pose questions to the group or to the host.
- If you encounter any technical difficulties, please notify COG staff.



**This meeting is being recorded
for notetaking**



Staff Meeting Contacts

Christine Howard

540-710-4789 or choward@mwkog.org

Steve Bieber

202-222-5226 or sbieber@mwkog.org

Lindsay Smith

202-550-2357 or lsmith@mwkog.org

Brian LeCouteur

202-962-3393 or blecouteur@mwkog.org

Welcome to New Members

MARYLAND

CARROLL MCBRYDE

Councilmember
Town of Bladensburg

KATE KENNEDY

Councilmember
College Park

ANDREA BROWN

Deputy Director
Dept of Economic &
Community Development
City of Laurel

CASSIE SHIRK

Director of Legislation and
Governmental Affairs
Maryland Department of
Agriculture

KATE STEWART

Mayor, Takoma Park, MD

VIRGINIA

MARYBETH CONNELLY

Councilmember
City of Falls Church

KENNY BODDYE

Supervisor
Prince William County

Welcome New Alternates

MARYLAND

College Park

MARIA MACKIE

Councilmember, District 4

City of Laurel Alternate

BILL BAILEY

Assistant Director of Parks &
Recreation

*Montgomery County Council
Alternate*

SELENA MENDY SINGLETON

Clerk of the Council, Montgomery
County Council

*Montgomery County Office of the
County Executive Alternate*

DR. EARL STODDARD

Assistant CAO

VIRGINIA

Prince William County Alternate

ANN WHEELR

Chair-At-Large, Prince William County, VA

Agenda Item 2



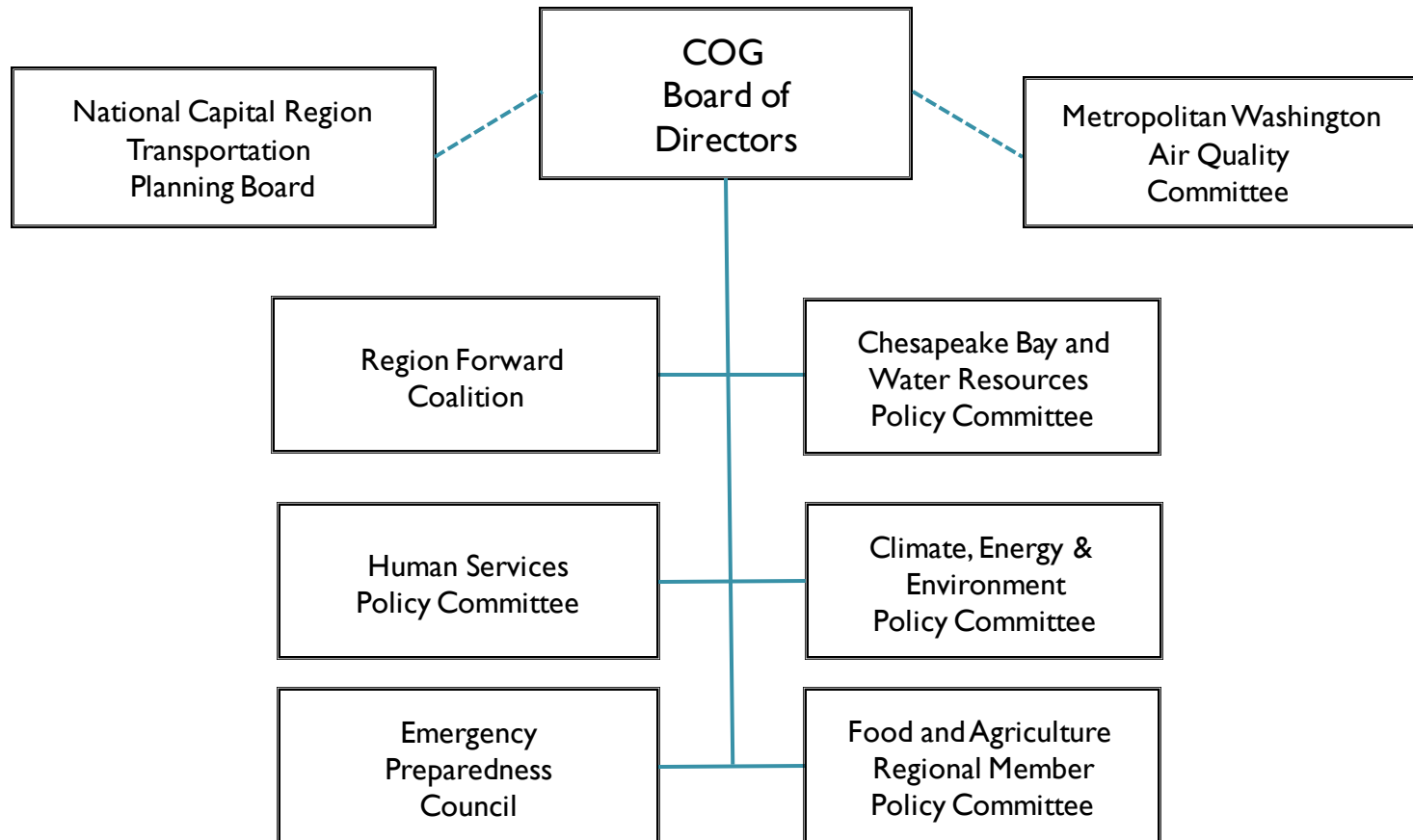
Virtual Voting

- First and second motions can be verbally spoken or entered into the chat box by FARM members.
- Discussion and questions may be raised by members verbally or in the chat box.
- When the vote is taken, your silence will be counted as an in-favor, “I” vote.
- You can vote against the motion or abstain verbally or in the chat box.
- Every FARM member marked as in attendance that does not abstain or vote against the motion will be marked as in favor of the motion.

Agenda Item 7

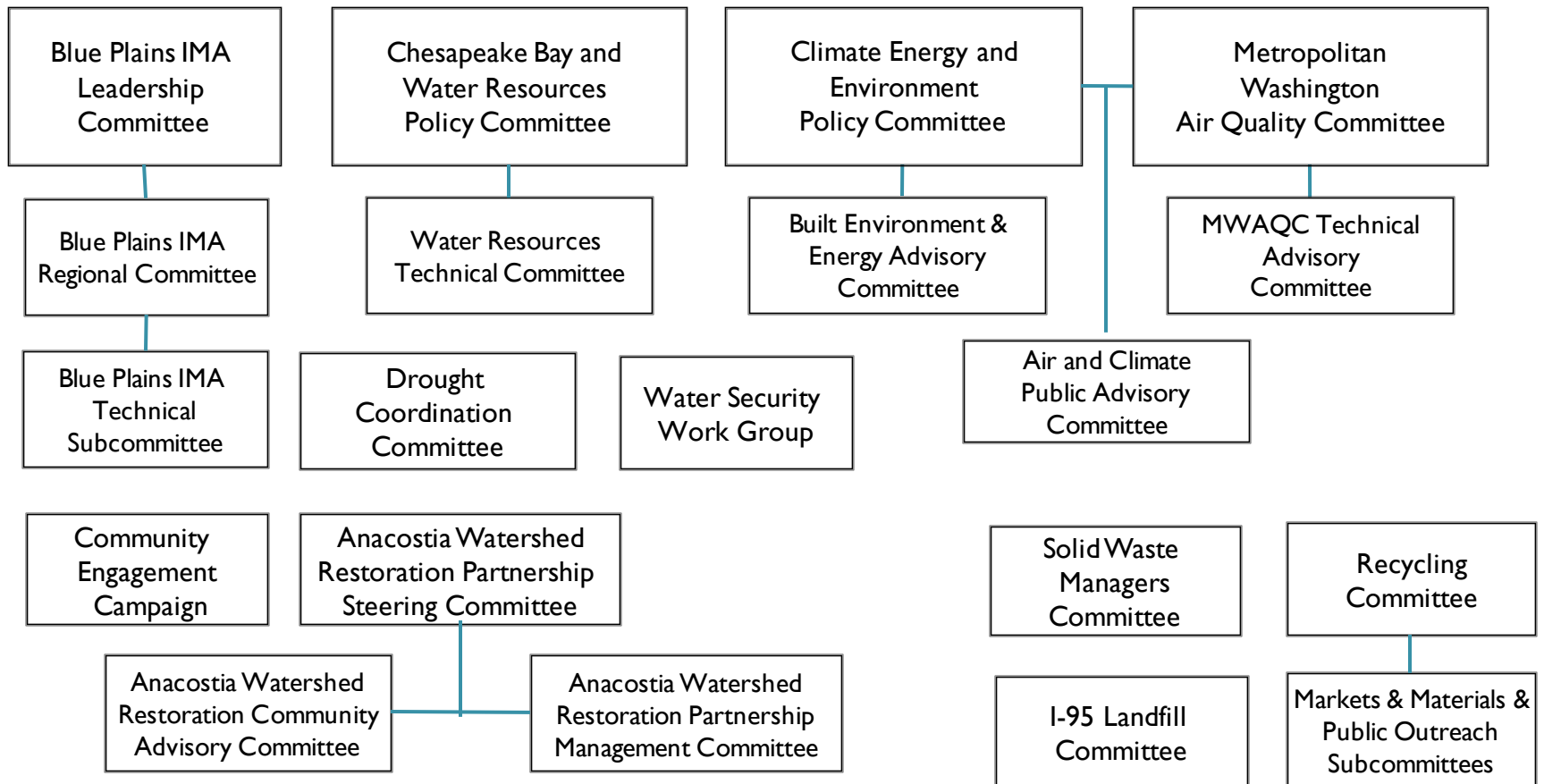


COG Policy Committee Structure



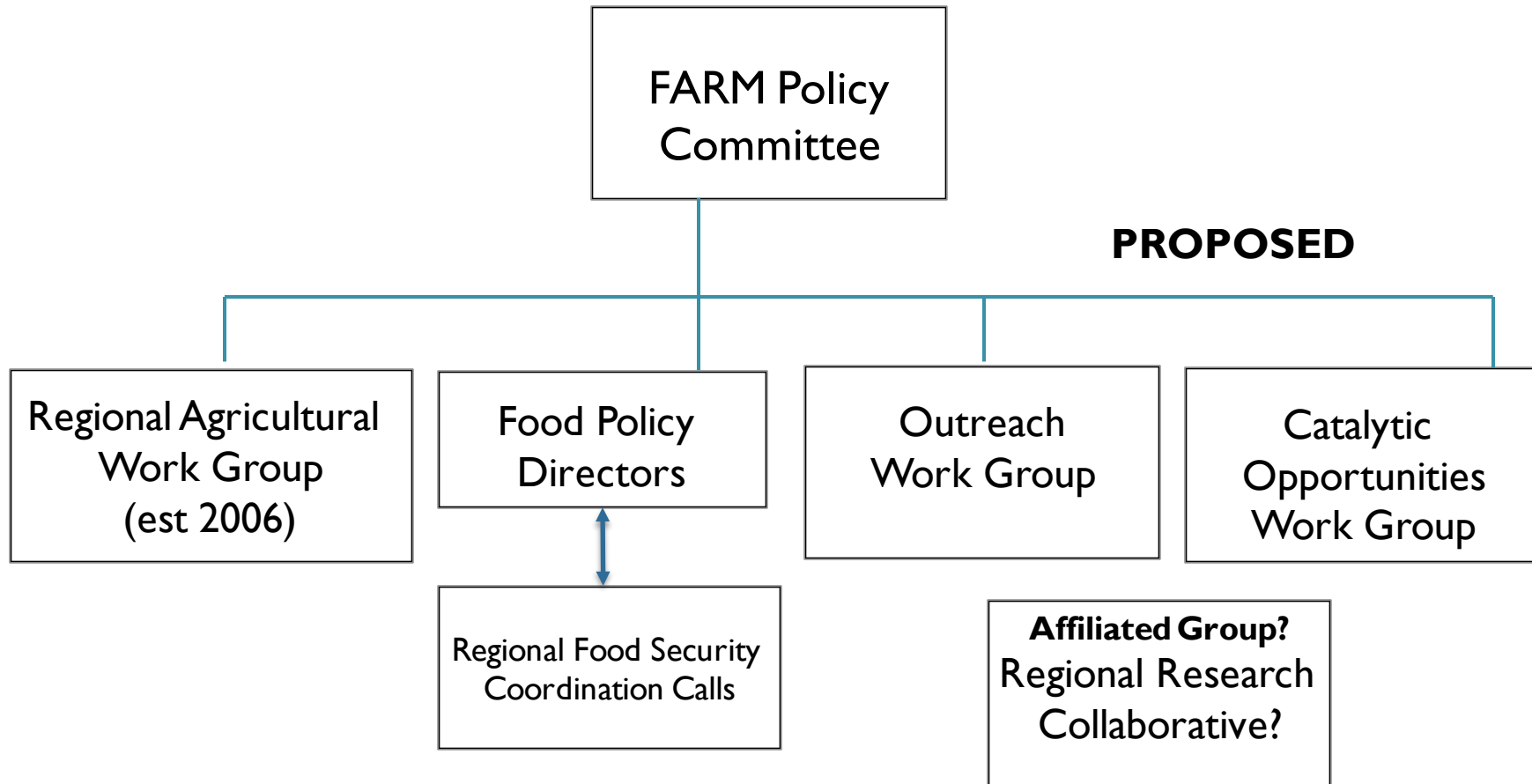
Environmental Programs

Committees and Affiliated Subcommittees or Work Groups



Environmental Programs (continued)

Committees and Affiliated Subcommittees or Work Groups (continued)



Existing Efforts

Regional Agricultural Work Group

- Scope update of National Capital Farms.org
- Identify pressing regional agricultural issues related to FARM goals, potential solutions, and elevate to FARM Committee
- Provide information exchange forum for local and state agricultural technical assistance providers/staff, food policy staff in Metropolitan Washington



Regional Food Security Calls

- Next calls are Feb 24th (Healthy Food Access at Farmers Markets) and March 31st (Food Policy Directors Roundtable)
- Define 2022 Q3,Q4 as part of FY2023 Work Program Planning

Proposed FARM Work Groups

Outreach and Catalytic Opportunities

- FARM Member or Alternate Committee members
- Manageable, actionable milestones
- Set calendar and expectations
- Limited staffing support

Regional Research Collaborative

- Very nascent! Called for in FARM FY22 Work Program
- Harry R Hughes for Agro-Ecology (affiliated with University of Maryland College Park, University System of MD) playing a lead convening role
- Could build relationships with/between research institutions on food system, multiple policy and resiliency efforts (not just FARM)

Proposed FARM Work Groups

Outreach Work Group - *Initial Focus?*

- Building FARM's (and the region's) relationship with USDA around FARM goals
- Annual meeting

Catalytic Opportunities Work Group - *Initial Focus?*

- Recommend next steps following Land Access for Black and Indigenous Farmers Meeting to FARM
- Create synergies with other regional efforts focused on procurement and sourcing from Black farmers, other farmers of color