

Mobis Transportation / Bikestation Bikestation Module System Overview



Metropolitan Washington Council of Governments
Washington Regional Bicycle and Pedestrian Subcommittee
September 15, 2009



Bikestation is a division of Mobis Transportation

Bike Transit Problems



Theft prevention



Need for scalable solution



Current solutions are ineffective



Not yet integrated with transit systems

30% of Bikestation users were previously driving a car to commute and another 60% cycle more often because of the services and convenience being offered.

Bikestation Overview

- Develop sustainable “Last Mile” transit programs under the Bikestation, CityWheels and City BikeShare brands.
- Plan, develop and operate transit centers
- Full-service distributor of multimodal products, services and solutions
- Started in 1996 as BIKEable Communities (non-profit)
- Mobis (for-profit) was formed in 2008
- A certified B Corporation™
(higher social and environmental performance standards and accountability)



13 Years of Specialized Industry Experience

Selected Clients

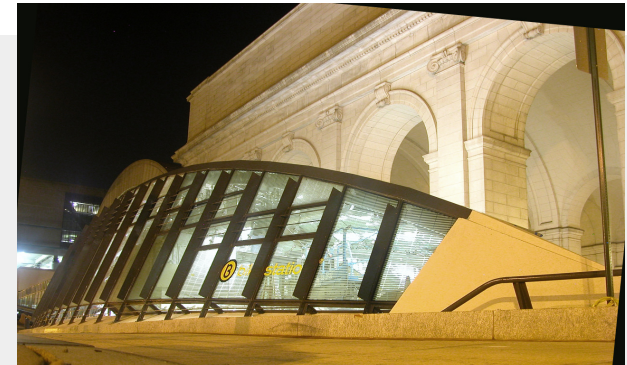


- **Long Beach, CA** Multimodal Hub
- **Washington DC** Department of Transportation (DDOT) Union Station Redevelopment Project
- **Salt Lake City** Intermodal Transportation Hub
- **Guangzhou, PRC** Bus-Rapid Transit Station Planning
- **Santa Monica, CA** Bicycle Planning (3 sites)
- **Mexico City** Bike Transit Center Policy Development
- **Los Angeles County Metro** Bike Transit Center Plan
- **Santa Barbara, CA** Design Study and Development Strategy
- **Eastern Cambridge, MA** Feasibility Study
- **Pittsburgh** Bike-Transit Center Feasibility Study



Bikestation Washington D.C.

Purpose-Built Facility (10/09) Staffed hours: 66/week
112 bike spaces 1,600 square feet
Retail, repair, bike rental, changing room, lockers



Bikestation Long Beach, CA (3rd Expansion)

Purpose-Built Facility (12/09) Staffed hours: 71/week
100 bike spaces 1,600 square feet
Retail, repair, bike rental, restrooms, showers, lockers



Bikestation Customized Solutions

Bikestation Seattle

2,100 sq. ft. 72 bike spaces
Rentals, repair, restroom, vending, lockers



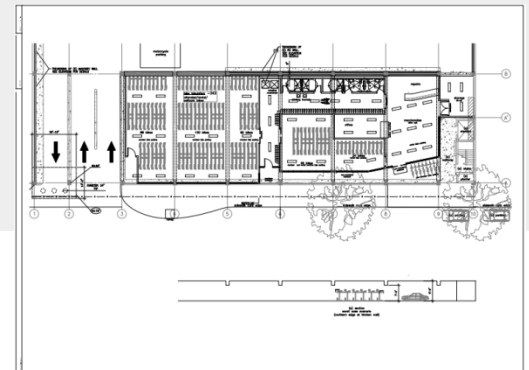
Bikestation Santa Barbara

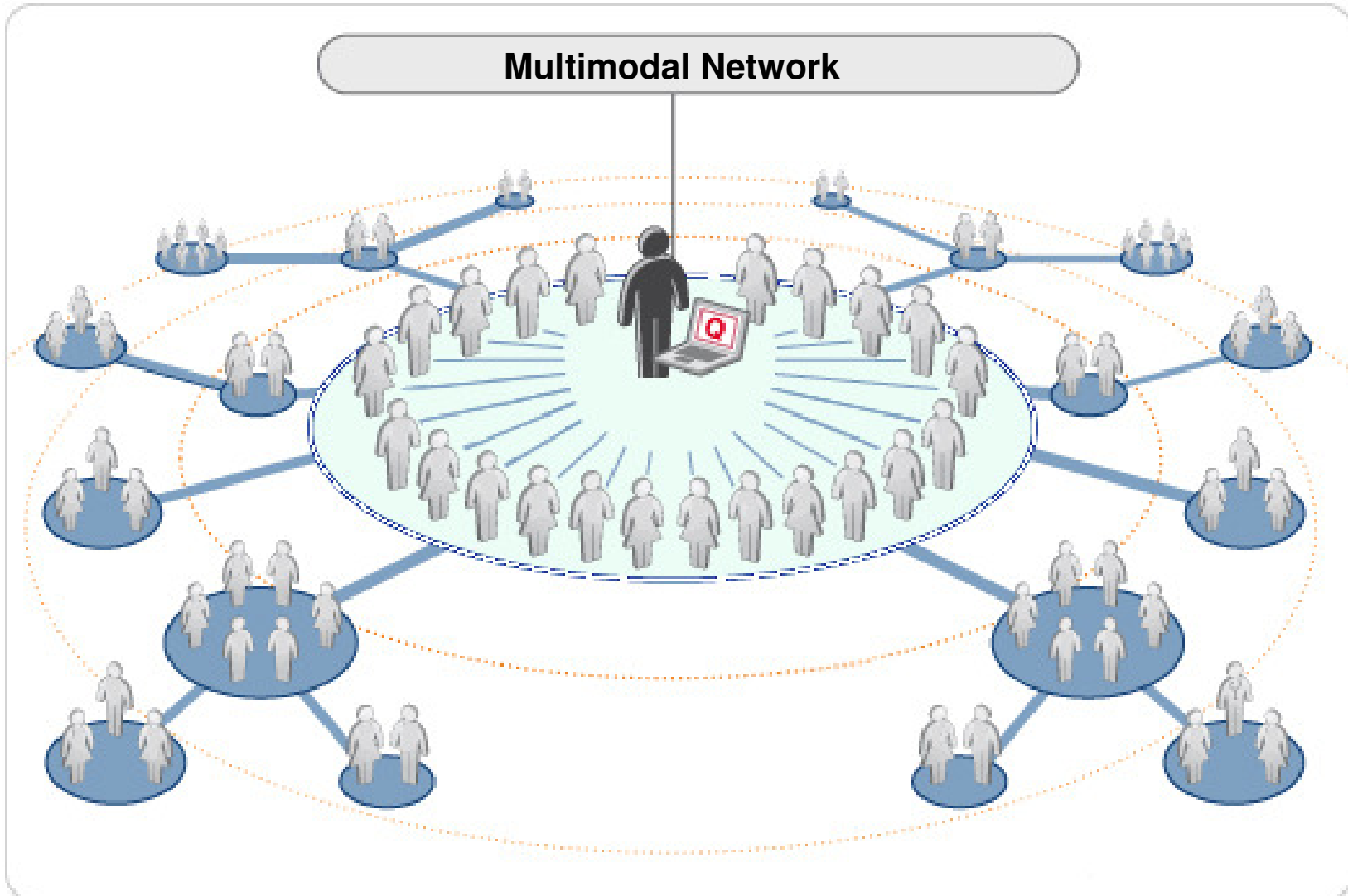
1,360 sq. ft. 78 bike spaces
Shower, restroom, self-service repair, vending, air



Bikestation Santa Monica

4,710 sq. ft. 340 bike spaces
Shower, restroom, repair, vending, lockers





Bikestation Module System

The entire system was specifically designed for novice riders, with one-size-fits-all easy-loading bike racks, attractive and inviting design, video and electronic security monitoring, and high durability.

- Networked with all Bikestations
- Seamless, ubiquitous user experience
- Dense, efficient use of space
- Configurable for bike sharing and bike parking
- Secure electronic and video monitoring
- Simple, clean design; fits into any environment
- Long life construction, low maintenance cost
- Fully outsourced operations
- LEED construction for sustainability and environmental responsibility

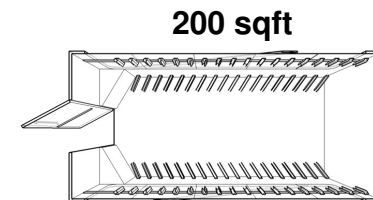
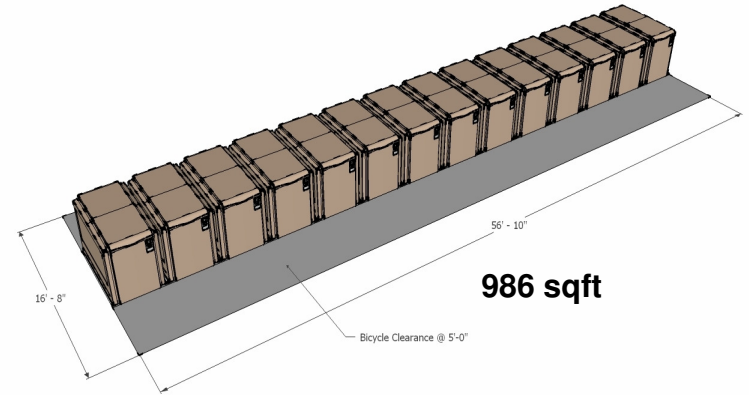


Moving 100 short-distance customers from driving a car to riding a bicycle to transit represents a potential capital savings of \$850,000 to \$2.5 million.

Bikestation Advantages

Each Bikestation Module can service more than 26,000 individual trips each year, and can be further scaled as future demand requires expansion.

- Use 80 % less space
- Service 56 % more users
- Spend 290 % less (3 years)



	Bikestation Module	Bike Lockers
Auto commutes displaced per year	52,000	33,280
Commute miles displaced per year	312,400	199,680
Emissions reduced per year (lbs)	137,280	87,859
Gallons of fuel reduced per year	7,800	4,992

William Ewing

VP Business Development

Mobis Transportation / Bikestation

T: 562 733 0106, x105

bewing@bikestation.com



a division of Mobis Transportation