

# GREENHOUSE GAS MITIGATION/CLIMATE ADAPTATION MASTER CONTRACT

---

## Overview and Contractor Introduction

Jeff King, COG Climate, Energy and Air Program Director

Maia Davis, COG Senior Environmental Planner

Rick Konrad, COG Facilities and Purchasing Manager

Built Environment and Energy Advisory Committee (BEEAC) Meeting

November 17, 2022



Metropolitan Washington  
Council of Governments

# MASTER CONTRACT

---

- **Master Contract 23-010 A-G** CONTRACTOR Support for Greenhouse Gas (GHG) Inventories, Mitigation Planning and Implementation
- Contractors awarded Master Contract on an “**Indefinite Delivery/Indefinite Quantity**” (“IDIQ”) basis.
- Tasks can be performed for local, regional, and State government agencies, non-profit organizations, stakeholders, as well as regional councils such as COG.
- This Contract is valid for **three (3) years**. COG may extend this Contract for **up to two (2) additional one-year periods**.
- Individual Task Orders (TO), issued in the final year of the Contract, may have a Period of Performance which extends beyond the termination date of this Contract.

# ACCESSING THE MASTER CONTRACT

---

There are two ways for COG Members to access the master contract:

## 1. Memorandum of Understanding (MOU)

- Coordinate with COG to develop high-level scope of work (SOW)
- Enter into MOU with COG
- Task Order (TO) Process to select contractor
- COG procurement guidelines are followed

## 2. COG Cooperative Rider Clause

- Review the Using COG Masters Contracts Guide
- Fill out a Rider Request Form
- Piggyback an existing TO Award if you have a similar SOW or develop a new TO in-house
- Follow your local agency purchasing guidelines



# PROCUREMENT THRESHOLDS

Cost/Price of Services	Solicitation Method
Micro Procurement: <\$10K	No Competition Required: Must be a fair and reasonable price
Small Purchase: \$10K - \$25K	Minimum of 3 Written Quotes: COG staff solicits written price or rate quotes. Lowest quote must be accepted.
Formal Procurement: >\$25K	Formal Solicitation Conducted by the COG Contracts and Purchasing Office: Includes SOW and scoring by Technical Selection Committee



# FORMAL TASK ORDER (TO) PROCESS

---

## 1. Finalize Scope

- COG Climate and Energy Team coordinates with local government staff to develop a more detailed task order SOW and draft TO

## 2. Request for TO Proposal Released

- Coordination with COG Contracts – ~3 weeks

## 3. Contractors Develop Proposals

- Contractors must be given at least 3 weeks to respond

## 4. TO Proposal Evaluation

- Technical Selection Committee scores on evaluation criteria such as firm's experience, staff experience, and work plan – ~1 week
- COG contracts score DBE and costs

## 5. Contractor Selection and TO Award – ~1 week

## 6. Issue Purchase Order – ~1 week

## 7. Project Kick-Off

*Note: Timeframes are averages and could be delayed by any party involved. For instance, 1 person's scores could come in late, or a community could be delayed in issuing a PO.*



# TASKS

---

- **Task 1: Greenhouse Gas Inventories**
  - Government operations and community-wide GHG inventories, modeling tools, emissions forecasts and projections, wedge charts, etc.
- **Task 2: Climate Mitigation and Energy/Sustainability Program Planning and Implementation Support**
  - Plan and strategy development on climate, energy, sustainability, EVs
  - Technical support on programs and projects for:
    - EERE, EVs, electrification/decarbonization, microgrids, CHP, fuel cells, hydrogen, renewable NG, geothermal, BPS, energy data, etc.
    - Recycling, food waste, plastic reduction, battery management, etc.
    - Green infrastructure, forest, UHI, regenerative ag, soil health
    - Large scale solar siting, market, engineering and site assessments
    - Procurement, deal structures, finance options, RFI development
    - Engagement, equity, energy burden, environmental justice
    - Support for securing new federal grants or other resources



# TASKS (continued)

---

- **Task 3: Resiliency Planning and Implementation Support**
  - Climate resilience and adaptation plans and deployment strategies
  - Assessments of impacts, risks, vulnerabilities, all hazards
  - Technical support on innovative strategies, programs and projects for:
    - Climate vulnerable infrastructure and security and climate vulnerable communities
    - Market, engineering and site assessments
    - Procurement, deal structures, finance options
    - Engagement, equity, environmental justice, communications and marketing support for resilience hubs, underserved communities
    - Support for securing new federal grants or other resources
- **Task 4: General and Technical Support Services**
  - On call temporary labor, social media, education/outreach, website development, GIS, other technical/engineering services



# CONTRACTOR INTRODUCTIONS

---

- **Contract 23-010-A: ICF**
- **Contract 23-010-B: Cadmus**
- **Contract 23-010-C: Michael Baker**
- **Contract 23-010-D: AECOM**
- **Contract 23-010-E: Tetra Tech**
- **Contract 23-010-F: Stantec**





# ICF – Team Leads



**Deb Harris**  
**Contract Director**  
[deb.harris@icf.com](mailto:deb.harris@icf.com)  
**202-862-1574**



**Emily Golla**  
**Contract Manager**  
[emily.golla@icf.com](mailto:emily.golla@icf.com)  
**202-862-1246**

## Other Key Personnel

**Adam Agalloco:** Local Government and Community Mitigation Expert, TOM

**Laura Hammett:** Adaptation and Resilience Expert, TOM

**Emmy Feldman:** Electric Vehicle Expert

**Cassie Bhat:** Adaptation and Resilience Expert, TOM

**Leslie Chinery:** GHG Inventory and Mitigation Expert, TOM

**Adam Parris:** Municipal Planning and Resilience Expert

**Logan Pfeiffer:** Outreach and Communications Expert, TOM

**Fiona Wissell:** Electricity Expert, TOM

**Bill Prindle:** Senior Advisor, Energy and Built Environment

**Peter Schultz:** Senior Advisor, Adaptation and Resilience





**Michael Grant:** Senior Advisor, Transportation

**Carrie Giles:** Electric Vehicle Expert

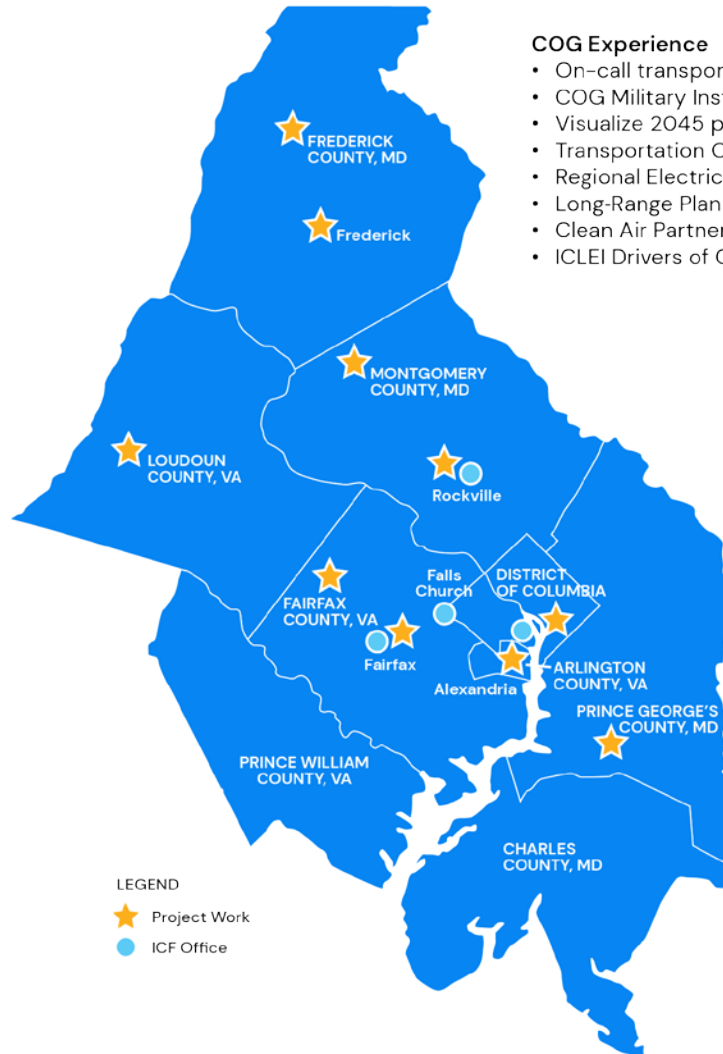
**Ben Foster:** Renewable Energy and Resilience Expert



# ICF – Team Overview

	<p>Internationally recognized for our leadership in climate change. World-class experts in GHG accounting, mitigation, risk, vulnerability, adaptation, and climate action planning and implementation</p>
	<p>A DBE-certified firm specializing in providing effective communications, including public involvement, media relations, digital and social media, and graphic design.</p>
	<p>A WOSB with specialized experience in GIS, planning and public outreach, water resources engineering, and LEED consulting and sustainability services, among others.</p>
	<p>A WOSB with climate analysis and planning expertise, including emissions analysis and forecasting, community outreach and engagement, goal setting, and mitigation and adaptation measures.</p>
	<p>A DBE-certified firm that provides a wide variety of consulting services in environmental, transportation, planning, and management.</p>
<p><b>Dr. Sacoby Wilson</b></p>	<p>A nationally renowned environmental justice expert.</p>

# ICF – Recent National Capital Region Experience



## COG Experience

- On-call transportation and climate contracts
- COG Military Installation Resilience Review
- Visualize 2045 plan update
- Transportation Climate Change Mitigation Study of 2021
- Regional Electric Vehicle Infrastructure Plan
- Long-Range Plan Task Force
- Clean Air Partners Program (PRR)
- ICLEI Drivers of Change Tool development (Cascadia)

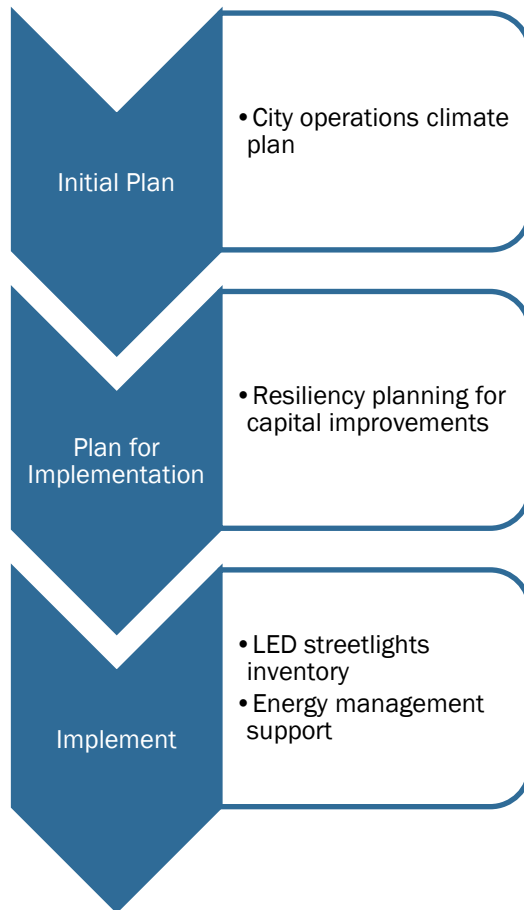
## COG Member Experience

- WMATA 2019 Sustainability Report
- Fairfax County Community-wide Energy and Climate Action Plan
- City of Frederick Local Government GHG Inventory, Climate Action Plan, and Implementation
- Baltimore County Local Government GHG Inventory and Climate Action Plan
- Electric Vehicle Planning, Prince George's County, Rockville, Frederick County
- City of Alexandria Climate Action Plan
- Montgomery County Building Performance Standards and Climate Assessments for Master Plans and Zoning Text
- Loudoun County Energy Strategy and Request for Information for Green Hydrogen
- Arlington County varied climate and energy services in support of the Community Energy Plan
- Baltimore Metropolitan Council Resiliency Handbook
- Washington DC Urban Stream Restoration (Straughn)
- Prince George's County Coastal Restoration (Straughn)
- Reston Climate Assessment (Volunteer)

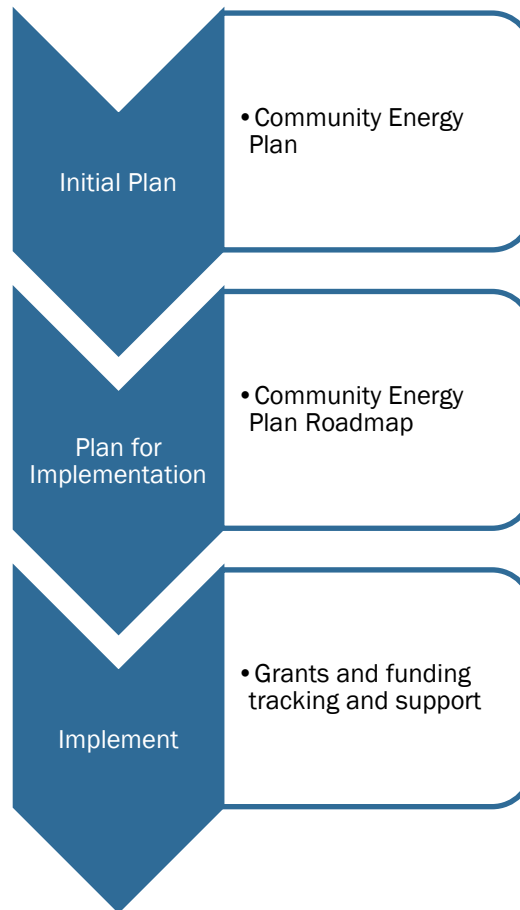


# ICF – Plan through Implement Support

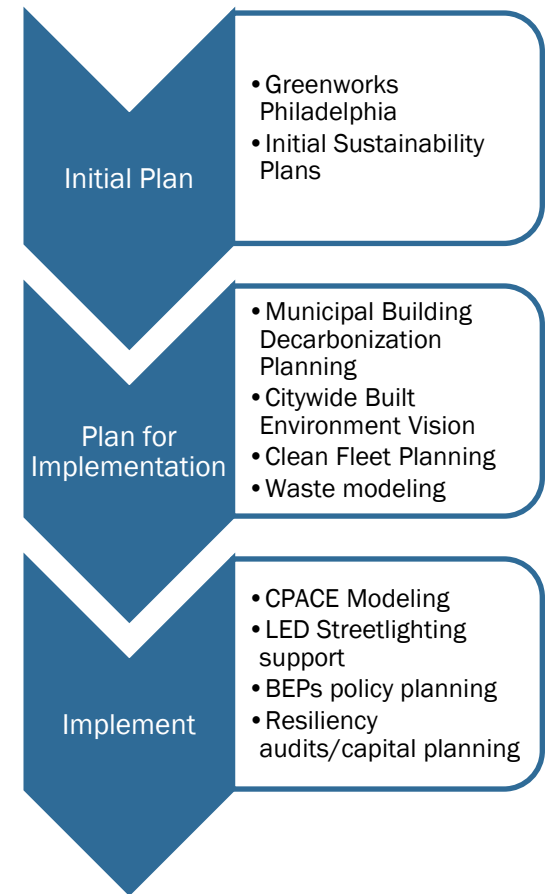
## City of Frederick, MD



## Arlington County, VA

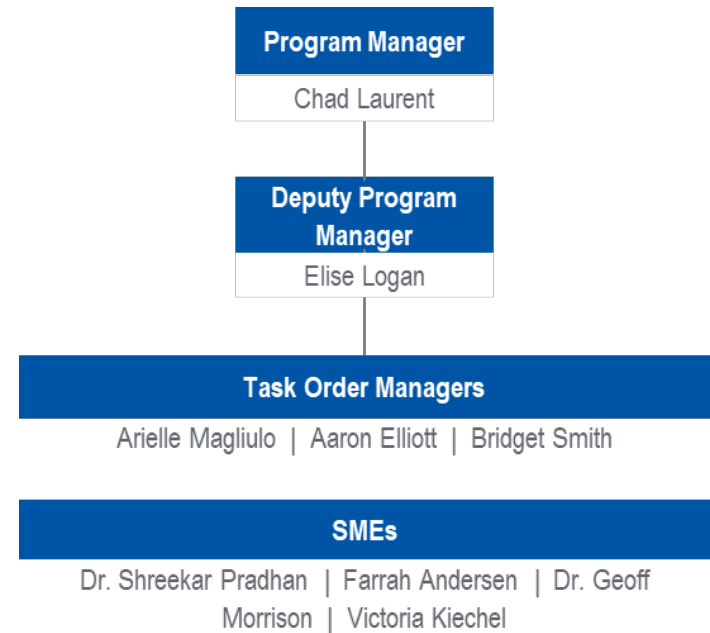


## Philadelphia, PA











# Cadmus Team Leads

- **Chad Laurent** serves as Program Manager. Mr. Laurent is a nationally recognized expert with 20 years of experience in renewable energy market development strategies and frequently works with corporate, university, nonprofit, and municipal clients to develop GHG inventories, along with strategies to achieve climate, renewable energy, and deep decarbonization goals.
- **Elise Logan**, Deputy Program Manager, serves as the day-to-day point of contact for COG. Ms. Logan has 13 years of experience in energy and environmental analysis, with nearly a decade spent leading projects and teams of technical experts supporting major government clients.



# Cadmus Subcontractors

Firm	Qualifications	WOSB/ MWOSB/ DBE
	<p><b>Cadmus</b>, is a mission-driven sustainable transportation, environmental, energy, water, health, and emergency management firm with 39 years of experience managing large contracts for federal, state and local clients.</p>	
	<p><b>Nspiregreen</b>, LLC is an award-winning, certified DBE firm specialized in transportation, land use, and sustainability and based in Washington, DC and Philadelphia.</p>	X
	<p><b>Climate Resilience Consulting</b> is a certified WOSB and social enterprise with 30 years of experience leading resilience efforts across the globe, including institution resilience strategy, policy, and measurement; resilience finance and funding; infrastructure; social equity and collateral benefits; and risk reduction and continuity planning.</p>	X
	<p><b>Energy Shrink</b> is a DC-based consulting practice focused on the decarbonization of the built environment, and a certified DBE. It provides research, energy modeling, and data analytics services; and develops and delivers accredited training.</p>	X
	<p><b>Creative Urban Alchemy</b>, founded by Ifeoma Ebo, is a MWOSB design and planning consultancy that strives for equity and design excellence in creating strategies for diverse scales in urban environments, including revitalization projects for cities.</p>	X
	<p><b>DMV Strategic Advisors</b> is comprised of local government leaders who have been directly engaged in developing and advancing the DC-region's climate and energy action plans.</p>	
<p><b>Jonathan Krones</b></p>	<p><b>Jonathan Krones, Ph.D.</b>, is an industrial ecologist and expert in sustainable solid waste systems. He is currently an Assistant Professor of the Practice in the Boston College Department of Engineering.</p>	
	<p>The <b>EFC</b> at the University of Maryland partners with communities to undertake comprehensive climate and land use planning, integrate climate considerations into their existing planning processes and programs, and pursue standalone mitigation and adaptation activities.</p>	
	<p><b>VEIC</b> has expertise in energy efficiency, building decarbonization, transportation electrification, and demand management.</p>	

# Cadmus Project Experience

---

- **Cadmus provided local governments service under the prior MWCOG Master Contract, including:**
  - MWCOG Greenhouse Gas Inventory
  - Sustainability and Climate Action Plan for Takoma Park
  - GHG Action Plan for Rockville
  - Climate Action Plan for Prince George's County
  - Climate Action and Resilience Plan for Fairfax County
  - EV Infrastructure Readiness Strategy for City of Alexandria
  - Montgomery County Schools GHG
  - Energy Advisory Services for Virginia Department of Energy
- **Other local projects include:**
  - District of Columbia on-call technical assistance, Climate-Ready DC
  - Arlington County energy and building services
  - EV Strategy for Virginia Beach



# Michael Baker Overview

Our Team boasts **National Leaders with Local Expertise**. Our goal is to provide MWCOG and Member Jurisdictions with **Exemplary, Tailored Support to Address Challenges and Seize Opportunities** in Climate Mitigation & Resiliency

- ✓ **Federal, State, & Local Policy and Regulatory Expertise**
- ✓ **Emissions Inventory, Forecast, and Strategy Development and Analysis**
- ✓ **Energy, Climate Action, and Equity Analyses and Planning**
- ✓ **Transportation Electrification Analyses & Planning**
- ✓ **Local/National Hazard Mitigation and Resiliency Evaluation & Planning**



**Colleen Turner, Project Manager**

- ✓ **22 Years of Experience in Public & Private Sector**
- ✓ **Climate Mitigation and Resilience**
- ✓ **Transportation Electrification**
- ✓ **Energy Planning & Analyses**

[Colleen.Turner@mbakerintl.com](mailto:Colleen.Turner@mbakerintl.com) | 443-618-0561 | [LinkedIn](#)



# Michael Baker Team

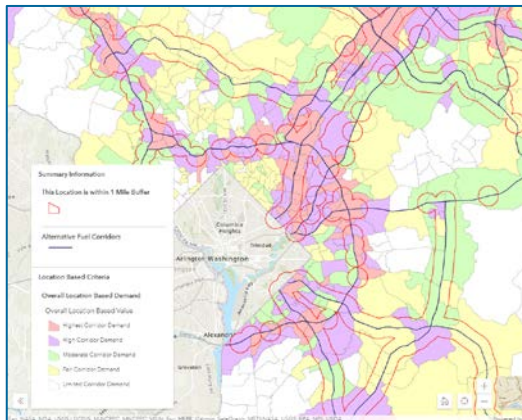


Firm	Task 1: GHG Inventories	Task 2: Climate Mitigation and Energy/ Sustainability Program Planning and Implementation Support	Task 3: Resiliency Planning and Implementation Support	Task 4: General and Technical Support Services
Michael Baker	■	■	■	■
Cambridge	■	■	■	■
KLT (DBE)		■	■	■
Fernleaf			■	■
Sharp (DBE)	■	■	■	■
Balmoral (DBE)	■	■	■	■
evolveEA	■		■	■
ICLEI	■	■		■

# Michael Baker Projects

- ✓ Climate Mitigation
- ✓ Vulnerability
- ✓ Resiliency
- ✓ Hazard Mitigation
- ✓ Electrification
- ✓ Equity
- ✓ Energy

- Richmond – Path to Equity
- Virginia (OIP) EV Readiness Study
- Maryland (DOT) Climate Change & EV Support
- Prince George’s County Smart Energy Communities
- Cambridge, MD Flood Resiliency
- Pennsylvania (DOT) Vulnerability Assessment
- Montgomery County, MD Hazard Mitigation Plan Update



Richmond Path to Equity

More at <https://www.ra.echocloud.com/rall/wealth>

2 Transportation Injustices

Please rank 5 of the 3 items above the line in your preferred order.

START RANKING

- 1 Neighborhood Dissection
- 2 Redlining
- 3 Suburbanization of Poverty

↑ Order your top 5 items above this ↑ line

Urban Renewal

Transportation Cost Burden

Transportation Planning

Environmental Hazards

Streetcar Network Removal

Transportation Funding

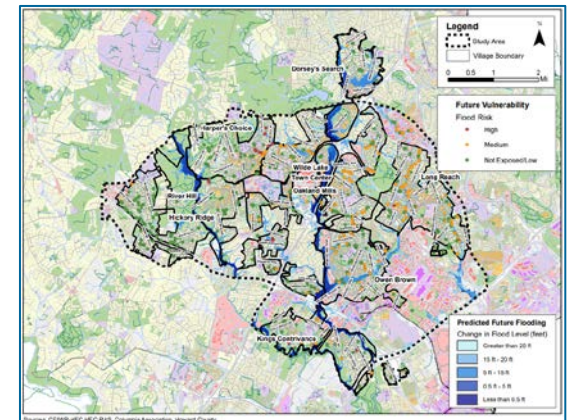
Redlining

Map of redlining in Richmond from 1937

Redlining injustices include urban blight and a lack of services due to a policy of neglecting Black and low income neighborhoods in the 20th century.

Redlined neighborhoods were denied the construction of new services such as hospitals and supermarkets and residents could generally not apply for bank loans. Many still have a lack of services, crumbling transportation infrastructure, and suffer from the [heat island effect](#).

SURVEY MAPPING WRAP UP



# Michael Baker Team Projects

- ✓ Climate Mitigation
- ✓ Vulnerability
- ✓ Resiliency
- ✓ Hazard Mitigation
- ✓ Electrification
- ✓ Equity
- ✓ Energy

- TransAction Update, NVTA – Cambridge Systematics
- WMATA Resiliency Policy & Program – KLT
- US Climate Resiliency Toolkit, NOAA – Fernleaf
- Commuter Choice Campaign, MDOT – Sharp & Co.
- A Study of Energy Equity, FDACS - Balmoral
- Triboro Ecodistrict, Millvale, Etna, Sharpsburg, PA - evolveEA
- Low Emissions Facilities Project, Montgomery CO., MD – ICLEI



TransAction Update



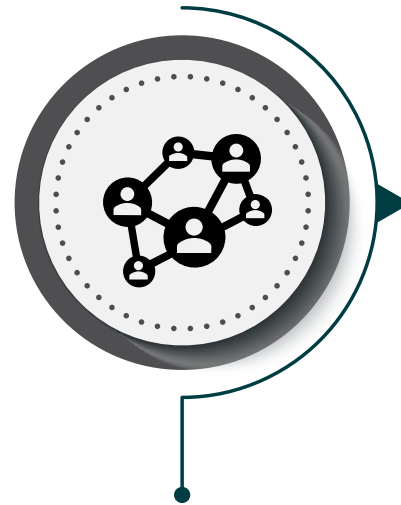
# AECOM: Who we are



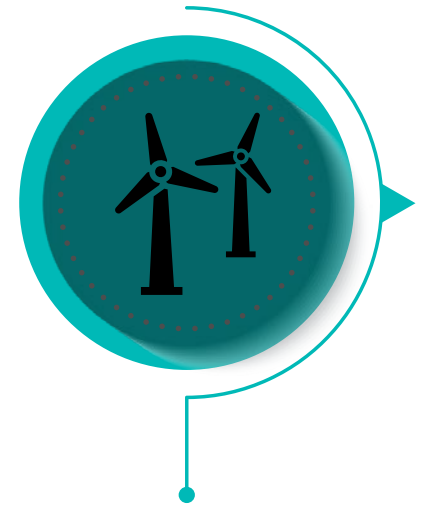
Trusted COG-  
Member Advisor



Experience  
delivering Climate  
Action services for  
COG members as  
well as nationally



Network of  
technical experts &  
partners



Committed to  
ESG

# Team Leads

---



**Ida Namur**  
Contract Manager



**Katrina Lewis**  
Program Manager



**Josh Lathan**  
Task 1 Lead  
Greenhouse Gas  
Inventories



**Claire Still**  
Task 2 Lead  
Climate Mitigation &  
Energy/Sustainability  
Program Planning and  
Implementation Support



**Emily Dhingra**  
Task 3 Lead  
Resiliency Planning  
and Implementation  
Support



**Tauhirah Abdul-Matin**  
Task 4 Lead  
General and Technical  
Support Services

# Sub-Contractors

---

**NEONICHE**  
STRATEGIES



**BLUEBIRD**  
ADVISORS



**EQUITABLE**  
**CITIES**



Metropolitan Washington  
Council of Governments



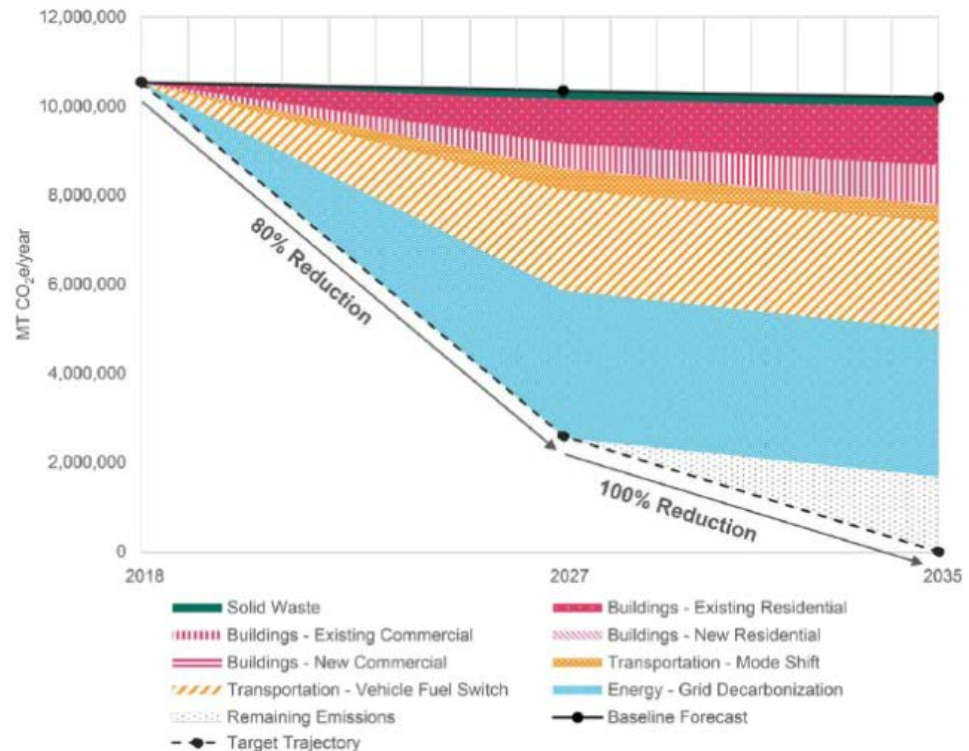
# Montgomery County Climate Action Plan

## Montgomery County Department of Environmental Protection

**Plan Goal:** Cut GHG emissions 80% by 2027 and 100% by 2035 compared to 2005 levels while promoting racial equity & social justice

### Highlights of Work:

- Determined which emissions reductions strategies to use
- Conducted downscaled climate modeling
- Led Racial Equity & Social Justice workshop roundtables
- Assessed impact on actions based on primary benefits, secondary co-benefits, and feasibility



# Tetra Tech

## TETRA TECH SNAPSHOT

WORKS IN  
**100+**  
COUNTRIES  
  
**7**  
CONTINENTS

Publicly traded  
on NASDAQ as



**\$3.2 billion** ANNUAL REVENUE

WORKS ON  
**70,000**  
PROJECTS  
ANNUALLY

**450**  
OFFICES  
WORLDWIDE

### ENR RANKINGS

- #1 Environmental Management
- #1 Hydro Plants
- #1 Water
- #1 Water Treatment/Desalination

**20,000**  
CLIENTS

**21,000** ASSOCIATES 





# Tetra Tech

---

## Program Manager:

- Alison Miskiman, GISP, CFM

## Project Managers:

- Mark Bergum, PE
- Carrie Koenig, BBA
- Kimberly Bakalars, BS

## Task Leads:

- **Task 1.** Greenhouse Gas Inventories |
  - John Gibbons, PE, ASP, MS
- **Task 2.** Climate Mitigation and Energy/Sustainability Program Planning and Implementation Support
  - Najoua Jouini, PhD
- **Task 3.** Resiliency Planning and Implementation Support
  - Cynthia Addonizio-Bianco, PP, AICP, CFM, LEED AP
- **Task 4.** General and Technical Support Services
  - Alison Miskiman, GISP, CFM



# Tetra Tech

---

## Subcontractors:

**GDS ASSOCIATES, INC.** focuses on electric, natural gas, water, and wastewater utilities. Provides information technology, market research, statistical and social media marketing services.

**GREEN POWERED TECHNOLOGY** focuses on assisting clients with making informed decisions about energy and infrastructure investments, operations and compliance, institutional capacity, risk reduction, and long-term self-reliance and resiliency.

**CENTER FOR CLIMATE STRATEGIES** is a non-profit, nonpartisan organization focused on providing facilitation and technical assistance to governments and stakeholders for the management of low carbon planning.

**BINERA, INC.** is a recognized expert in the areas of all-hazards risk assessment and risk management.

**SOBIS, INC.** focuses on integrating climate projections into hazard models and determining the social, environmental, and economic vulnerability of communities.

**WAGGONER & BALL** is a community of designers who create resilient architecture and environments sensitive to context, time, and place. Their work spans a range of scales, from buildings to landscapes, from cities to watersheds.



# Tetra Tech

---

## Relevant Experience:

Statewide Evaluation of Energy Efficiency Portfolios, Public Utility Commission of Texas (2013 – Present)

- Evaluation of energy efficiency; portfolio performance measurement

North Carolina Regional Resilience Portfolio Program (December 2021 to Present)

- Identification and prioritization of resilience and adaptation solutions



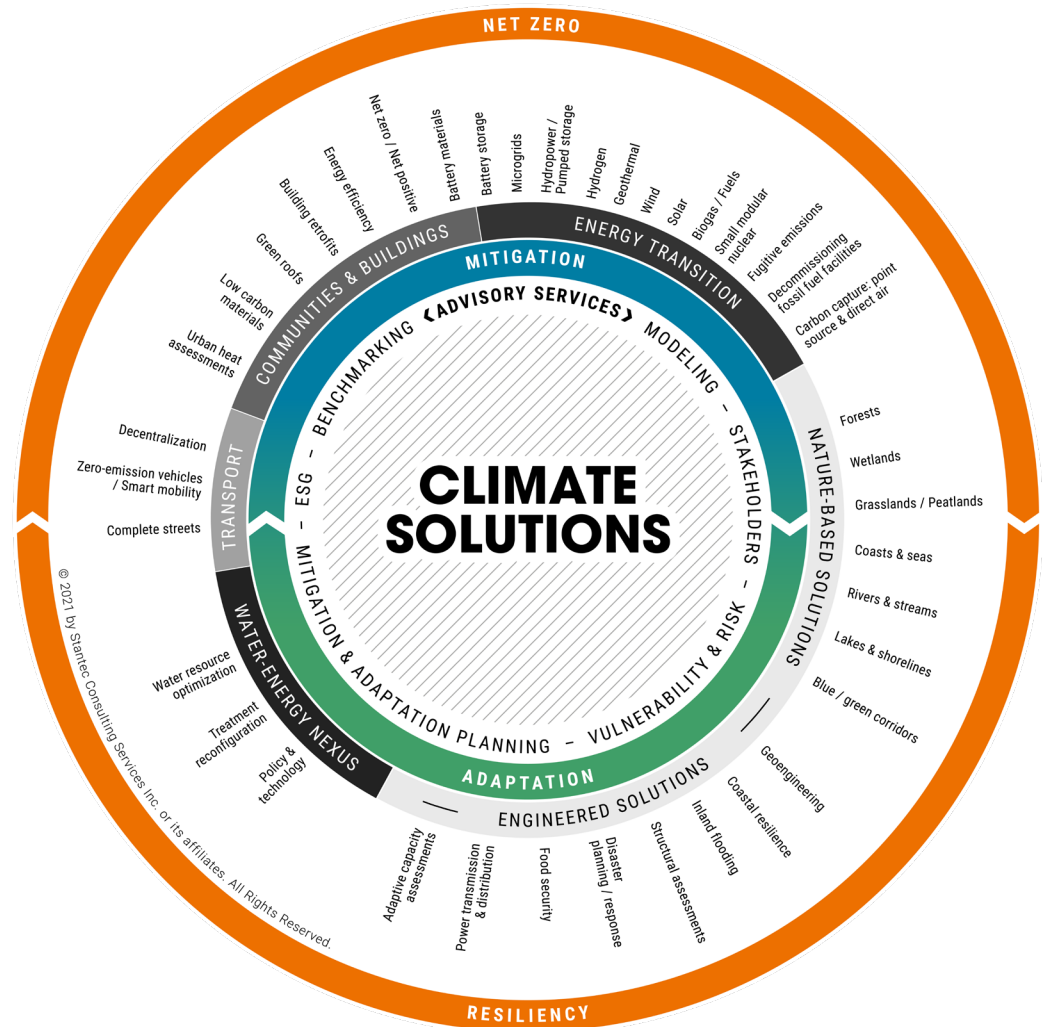
## Our approach to Climate Solutions

We recognize that to fulfill our promise to design with community in mind, we need to consider climate change in our project work.

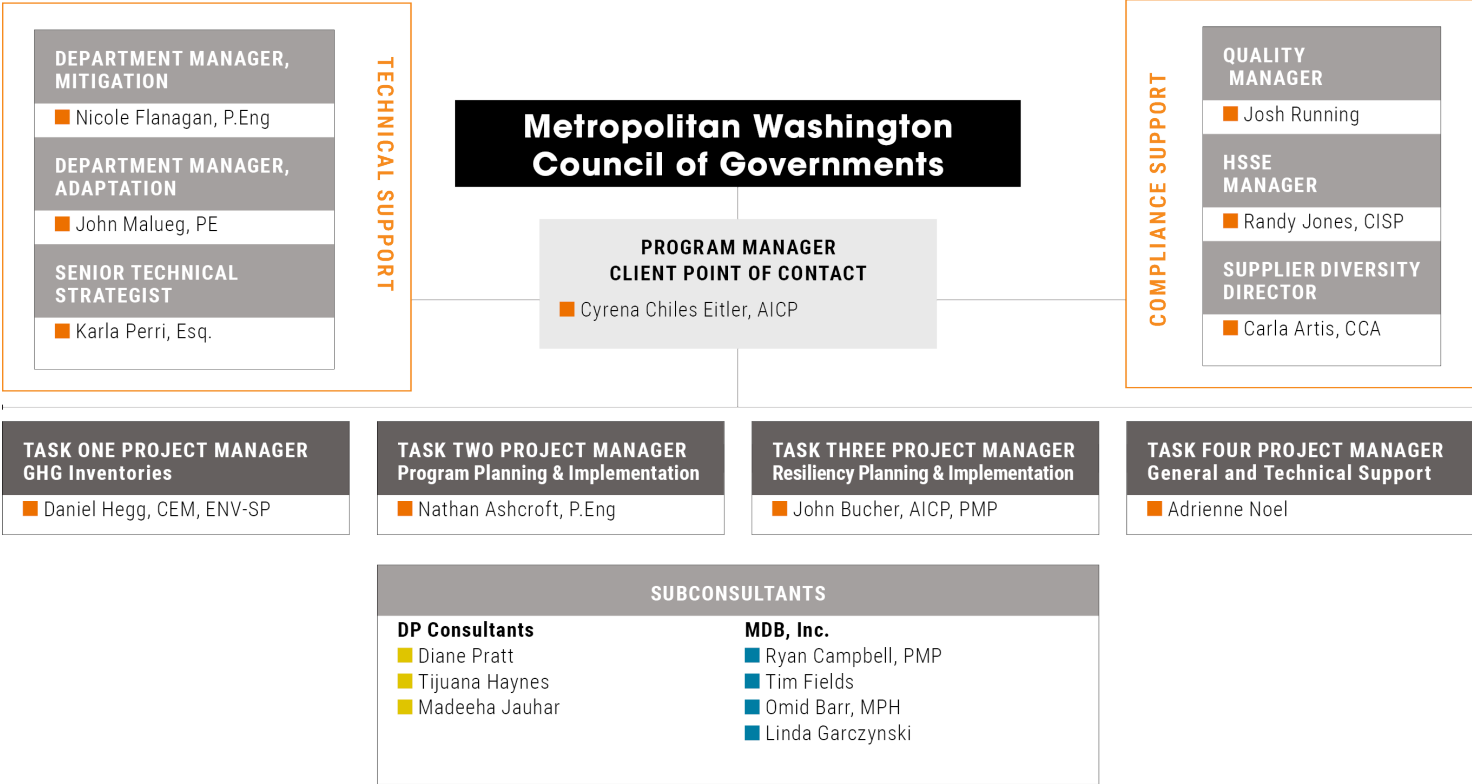
We have been providing services related to climate change planning, mitigation, and adaptation for decades.

Our approach is summarized in the Climate Solutions wheel.

[Click to explore...](#)



# Stantec



Our team was built to optimize Stantec’s staff and their expertise. We are a global firm with a local presence—our 500 National Capital Region employees are supported by more than 26,000 global experts in their fields.

# Stantec

## Arlington Transit (ART) Battery Electric Bus Design

- New ART Operations and Maintenance Facility
- Goal for the project is to accommodate 63 battery-electric buses at the site
- Pursuing LEEDv4 Silver BD+C
- Passive and active sustainability strategies
  - sunshades on south façade
  - daylighting including solatubes
  - PV
- Stantec is performing modeling to determine power requirements and power capacity
- Modeling will identify required utility upgrades and equipment



Metropolitan Washington  
Council of Governments





## Denver Water Administration Building

- Net Zero Building
- Achieved LEED-NC Platinum
- One Water, Denver's Holistic Plan for Water Efficiency and Reuse
  - Rainwater capture
  - Onsite wastewater treatment
- Winner of 12 industry awards, including 2022 AIA Colorado Chapter Design Awards; Platinum Award from Building Design + Construction 2021; and 2021 National Grand Conceptor Award for Engineering Excellence from ACEC, etc.

[Denver Water Operations Complex  
Redevelopment \(stantec.com\)](https://www.stantec.com)



Metropolitan Washington  
Council of Governments



## Jeff King

Director Climate, Energy and Air Programs

[jiking@mwkog.org](mailto:jiking@mwkog.org)

## Maia A. Davis

Senior Environmental Planner

[mdavis@mwkog.org](mailto:mdavis@mwkog.org)

[mwkog.org](http://mwkog.org)

---

777 North Capitol Street NE, Suite 300

Washington, DC 20002



Metropolitan Washington  
Council of Governments