

Embark Richmond Highway

PLANNING DIRECTORS TECHNICAL ADVISORY COMMITTEE MWCOCG

February 16, 2018



General Location

Richmond Highway Corridor Area

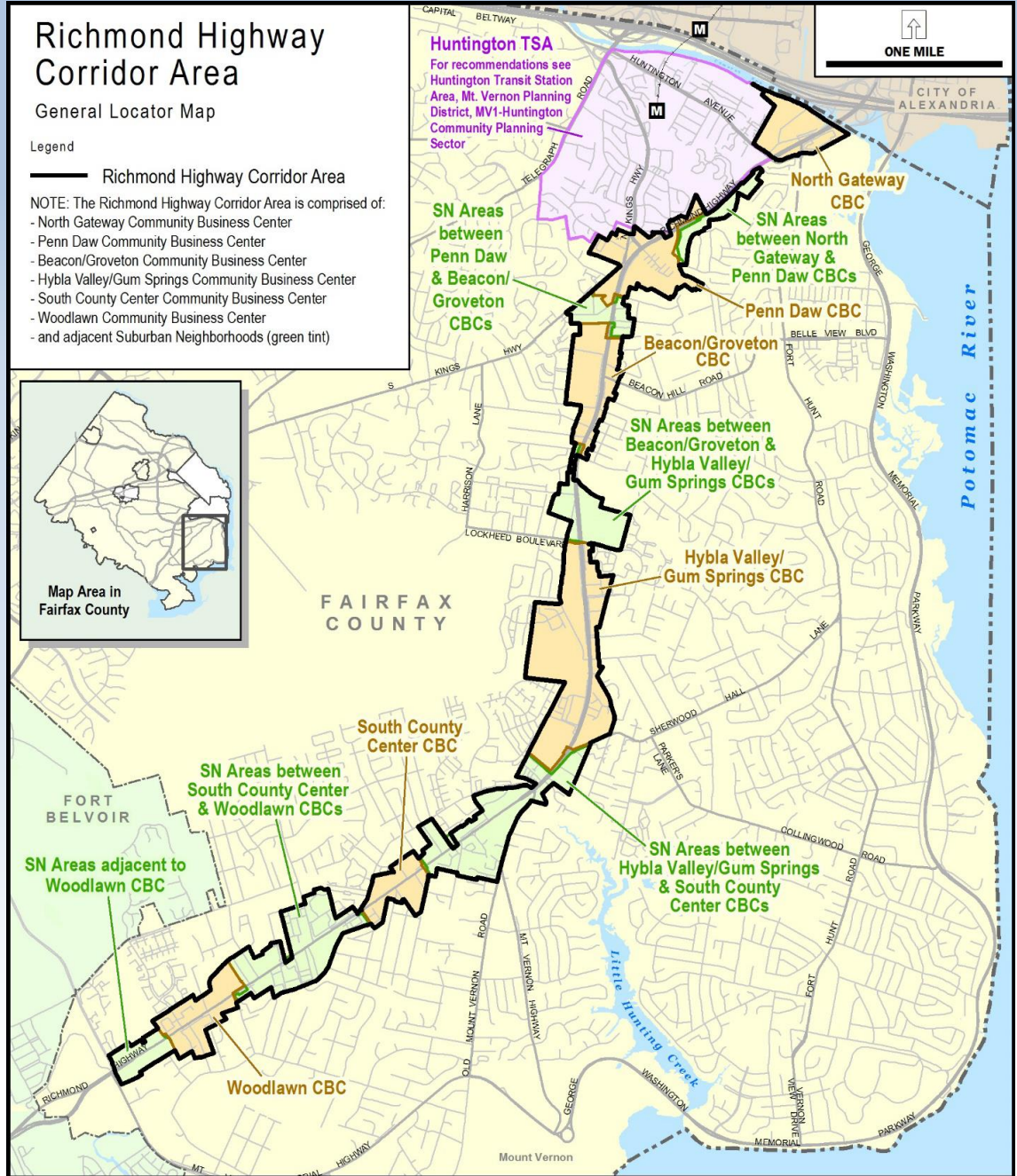
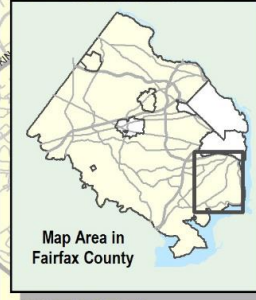
General Locator Map

Legend

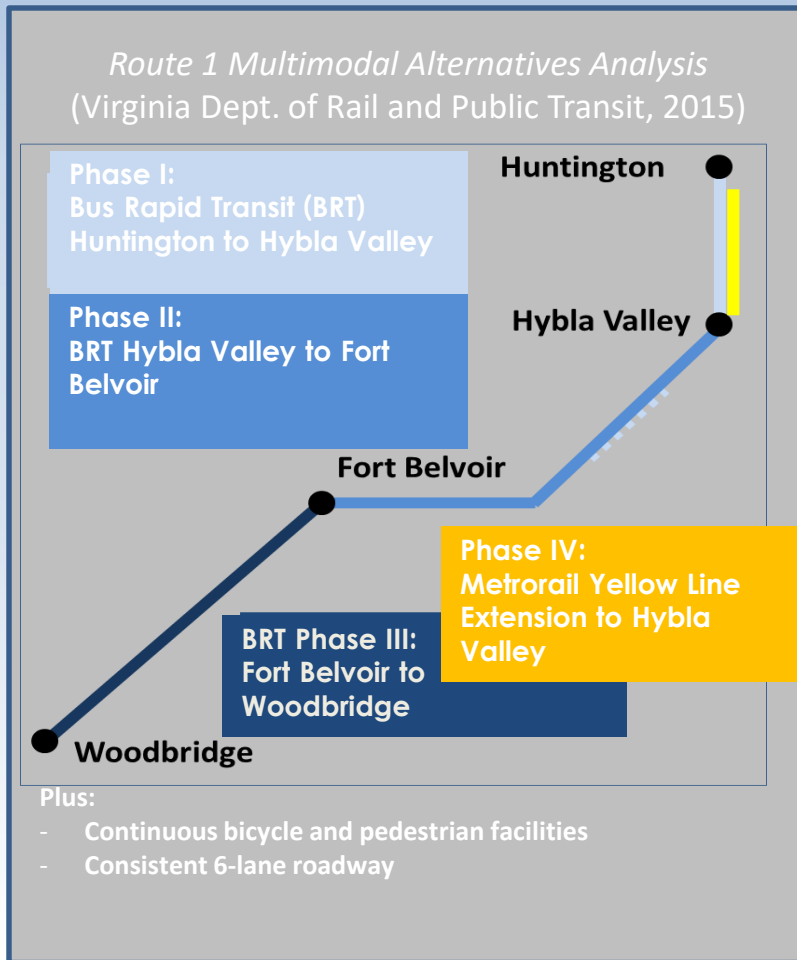
 Richmond Highway Corridor Area

NOTE: The Richmond Highway Corridor Area is comprised of:

- North Gateway Community Business Center
- Penn Daw Community Business Center
- Beacon/Groveton Community Business Center
- Hybla Valley/Gum Springs Community Business Center
- South County Center Community Business Center
- Woodlawn Community Business Center
- and adjacent Suburban Neighborhoods (green tint)



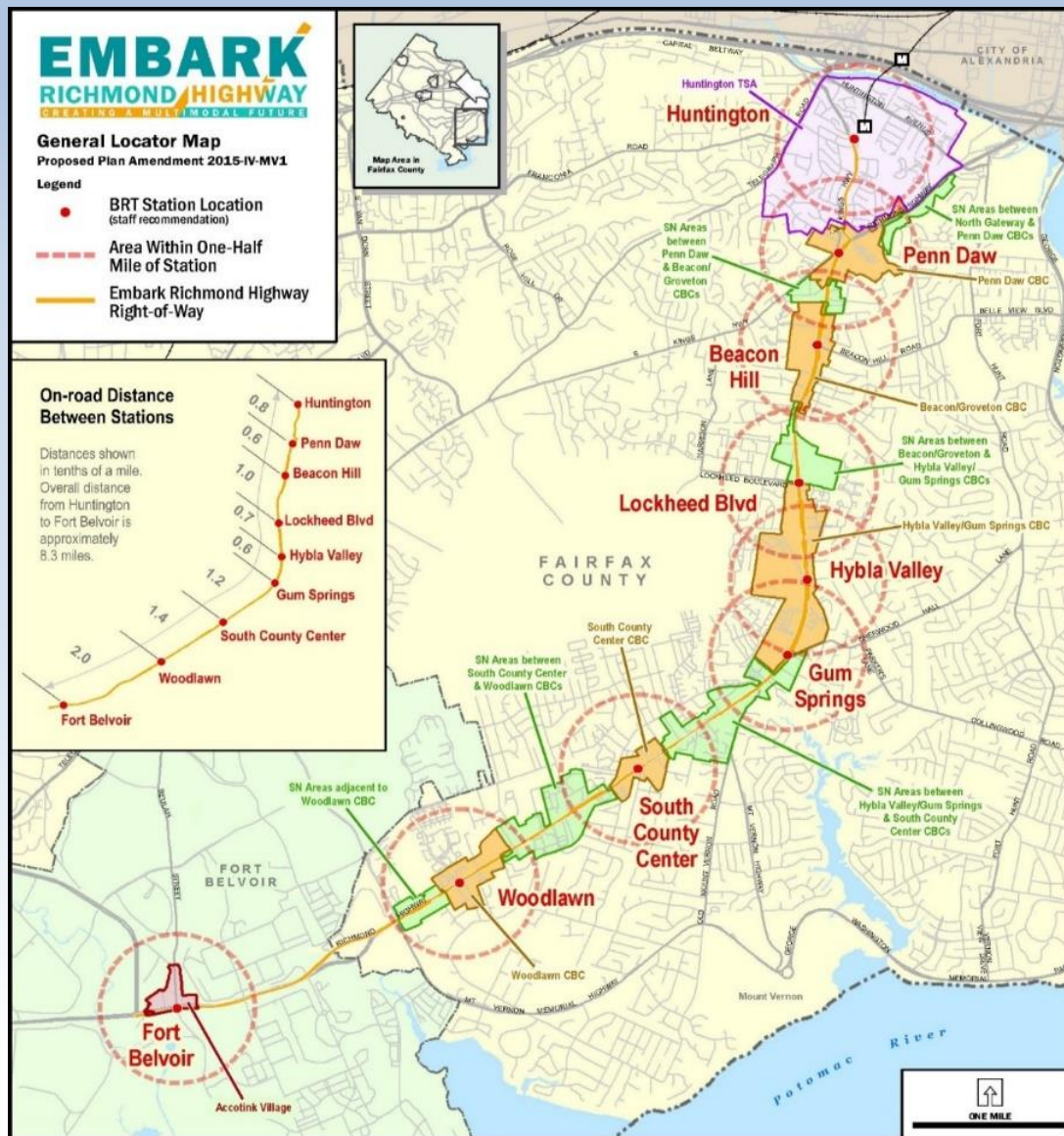
Initial Va. Alternatives Analysis



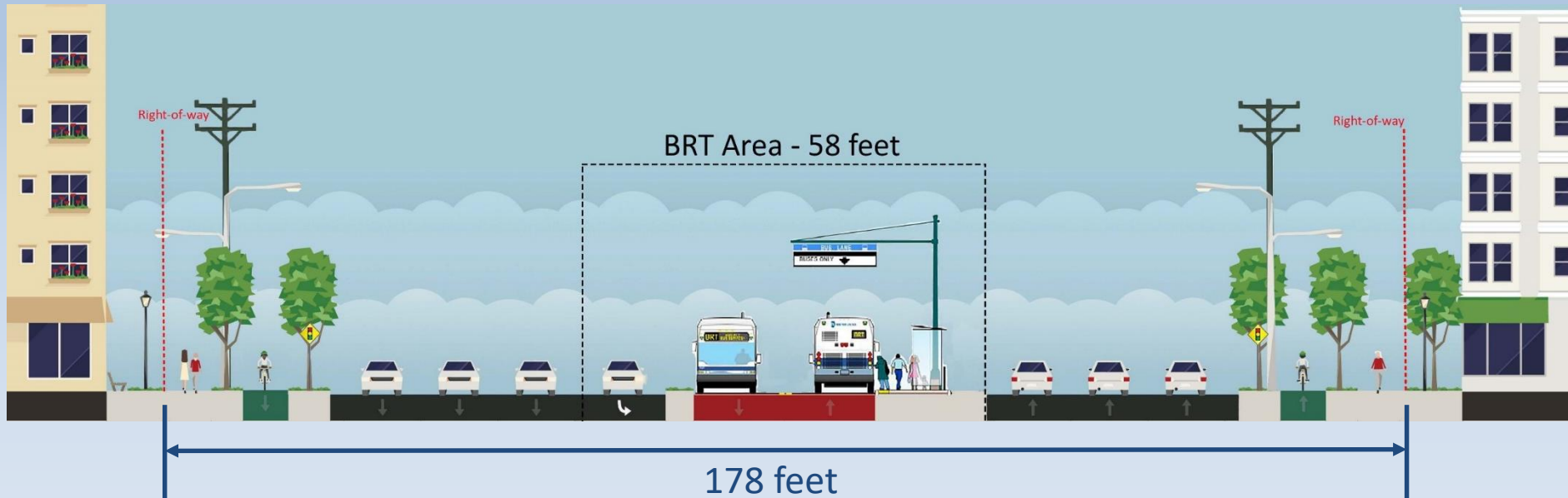
Three-phase implementation of a modern bus rapid transit (BRT) system in six-lane cross-section with pedestrian and bicycle facilities

Fourth phase, Metrorail Yellow-line extension from Huntington Station to Beacon/Groveton and Hybla Valley/Gum Springs Community Business Centers

BRT Alignment and Stations



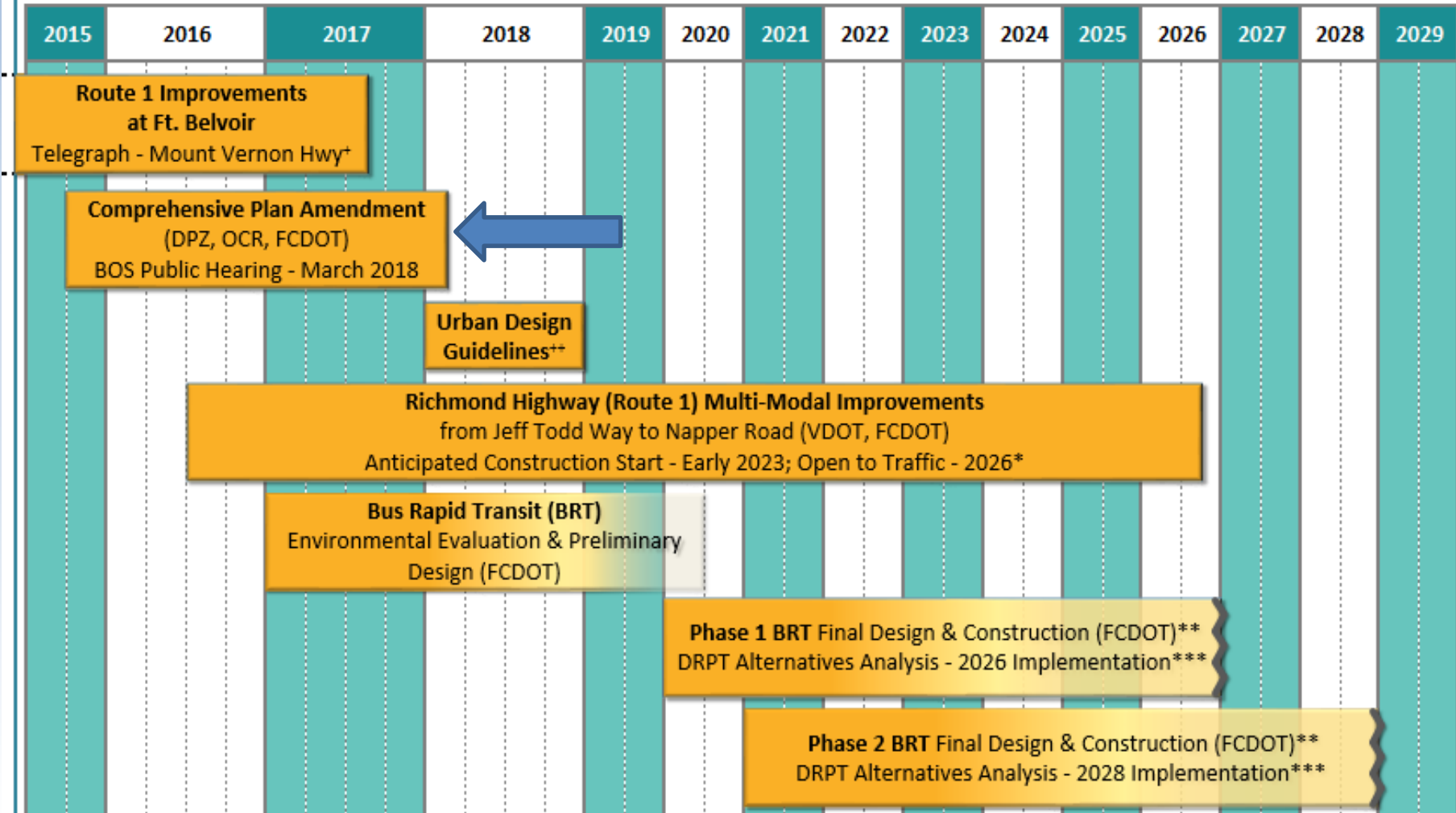
Bus Rapid Transit (BRT) System



- A high quality bus system delivering frequent and cost effective service at metro-level frequencies with special branded stations
- Advanced technologies to improve customer convenience and reduce delays

Richmond Highway Projects

Richmond Highway Long Term Projects (with Lead Agencies)



MWCOG Transportation Planning Board Coordination

Home > Maps > 2015 CLRP Amendment

Print Email Share

2015 CLRP Amendment



This is a summary of the major new projects or changes to existing major projects included in the 2015 Amendment to the CLRP, as it was approved on October 21, 2015. A complete listing of proposed additions and changes to all projects in the CLRP can be found in the [Air Quality Conformity Inputs for the 2015 CLRP](#).

For more information, [visit the CLRP website](#).

Tags: [Air Quality Conformity](#), [CLRP](#), [TPB](#)

Jurisdiction(s)	Fairfax County, Prince William County
Submitting Agency	Fairfax County
Secondary Agency	VDRPT
Projected Completion Date	2028
Total Cost	\$1 billion
Project Category	System Expansion
Project Type	Transit
Facility Name	US 1 Richmond Highway Bus Rapid Transit (BRT)
From	Hybla Valley
To	Fort Belvoir

[Zoom to](#)



Transportation/Land Use Coordination

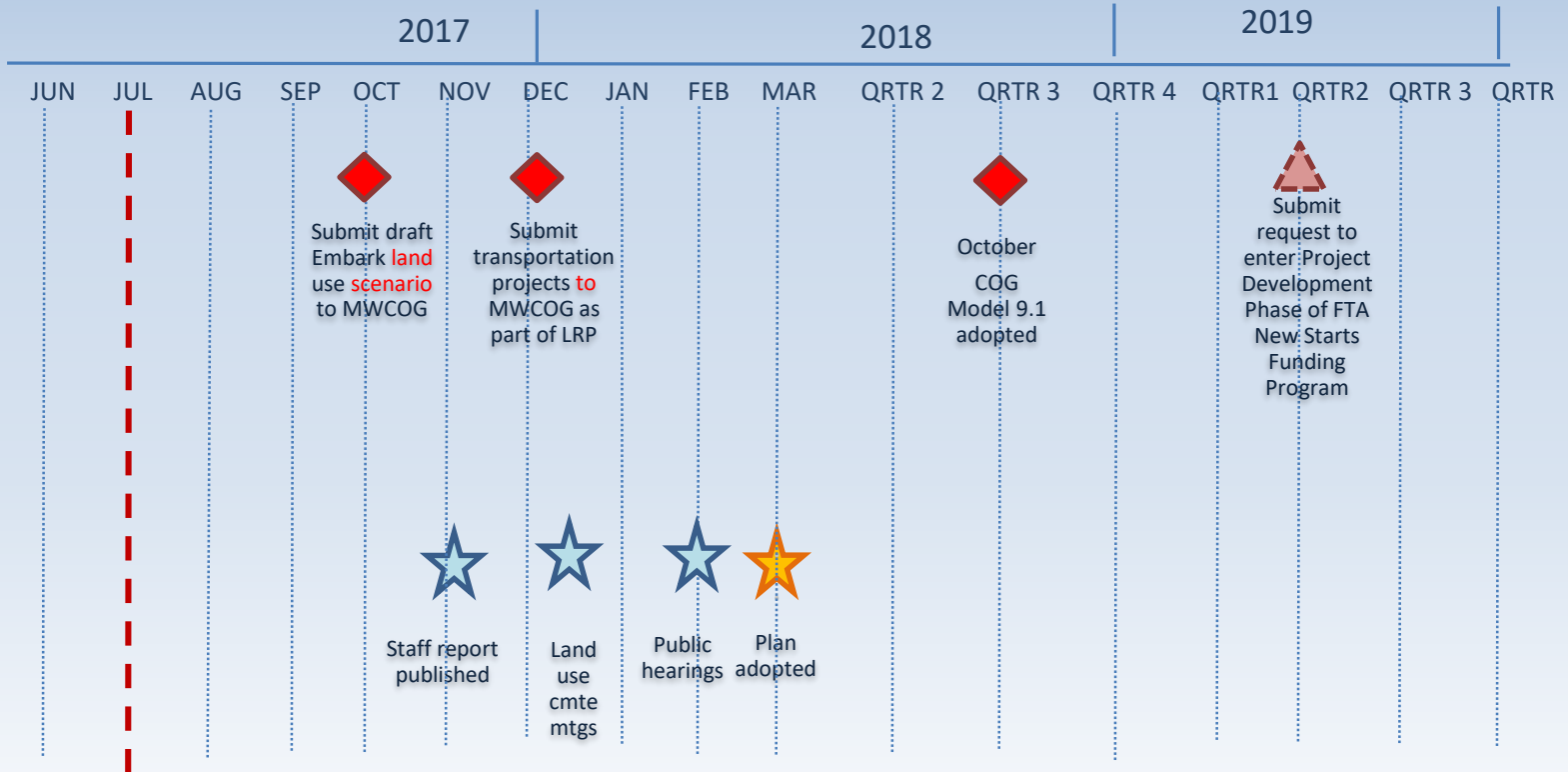


Embarc Richmond Highway is an initiative focused on creating a multimodal future for Richmond Highway Corridor where residents, workers, and visitors can walk, bike, or drive to the places they want to go. The components of the Embarc Richmond Highway project include:

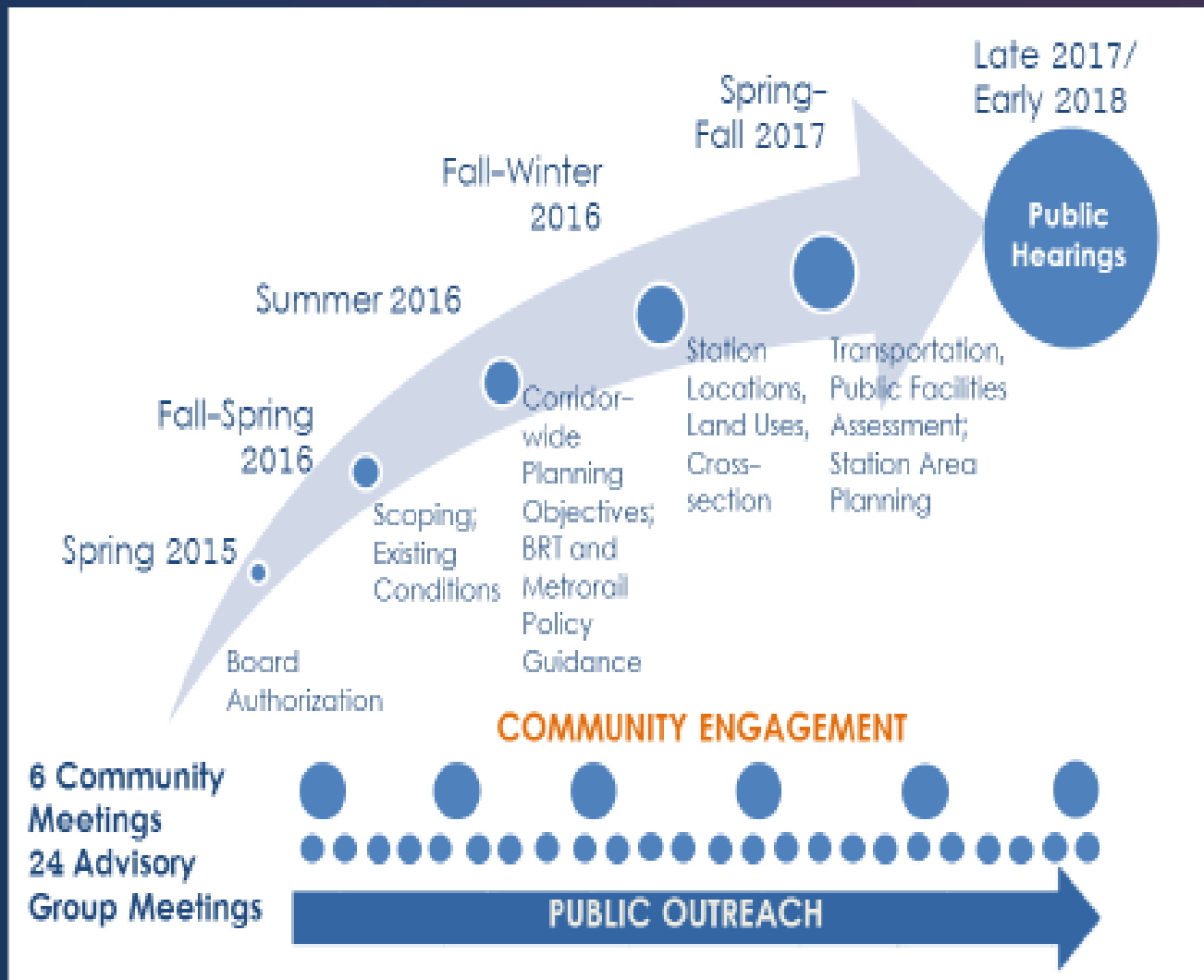


- ⇒ Fairfax County-led components of EMBARK are providing the vision for the design of the widening of Richmond Highway from Jeff Todd Way to Napper Road
- ⇒ Coordination between state and local agencies occurs at project progress meetings and during informal discussions and mini-workshops.
- ⇒ VDOT maintains Richmond Highway and makes final decisions considering the positions of its partners and the public
- ⇒ Fairfax County Board of Supervisors will be asked to provide endorsement of this project.

MWCOG 9.1 Coordination



Plan Amendment Process



BOS Review
March 2018

Embark Story Map

Be sure to visit our new interactive story map!



<https://fairfaxcountygis.maps.arcgis.com/apps/MapSeries/index.html?appid=7e2f347f24bd4f7e909a92b3b2f274a9>

- This interactive story map was created to engage those who would like to learn more about the Embark Plan Amendment, and the relationship of the current area to what is being proposed.
- The story map interface allows for users to interact with a geographical map of the study area and its context within the larger county and metropolitan area.

Guiding Planning Principles

Promote revitalization along the corridor



Encourage high-quality urban design



Ensure the health and leisure needs are provided



Offer safe, reliable, effective, and interconnected transportation modes



Guiding Planning Principles (Cont.)

Support the economic success of the corridor



Preserve, enhance, and restore the environment

Maintain the residential nature of communities surrounding the CBCs

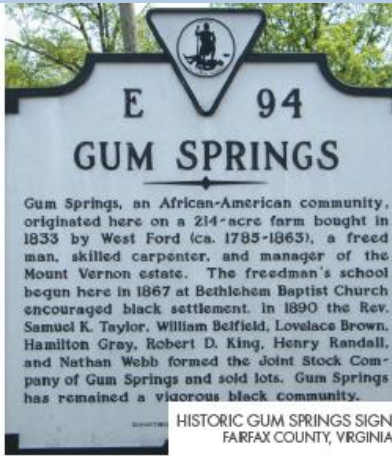


Recognize and accept responsibility for the stewardship of historic resources

Honor the Legacy and Improve Ecological Resources



LEGACY ART
NEW YORK CITY



HISTORIC GUM SPRINGS SIGN
FARFAX COUNTY, VIRGINIA



ECO-QUARTER /
ECOLOGICAL CORRIDOR
ULLE, FRANCE



LEGACY SCULPTURE
BOSTON, MASSACHUSETTS



WALKWAYS THROUGH
URBAN GREEN AREAS
CHENGDU, CHINA



ECO-QUARTER /
ECOLOGICAL CORRIDOR
ULLE, FRANCE

Support Healthy Communities



Support strong and healthy communities through well-defined and active public spaces.

Parks highlights-

- ✓ active and passive
- ✓ some large enough to be programmed
- ✓ encourage social interaction
- ✓ connect to neighborhoods
- ✓ combine with local streets and pedestrian/bike facilities, along with civic plazas, recreational and other open spaces, to create an urban park network.



Relate Building Form to Context

Transform the visual character of Richmond Highway through excellence in site and building design to build a sense of place.



Los Angeles, California



Silver Spring, Maryland



Alexandria, Virginia



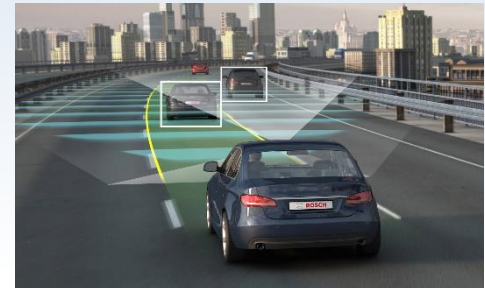
Alexandria, Virginia



GATEWAY SIGNAGE/BRANDING
WASHINGTON, DC

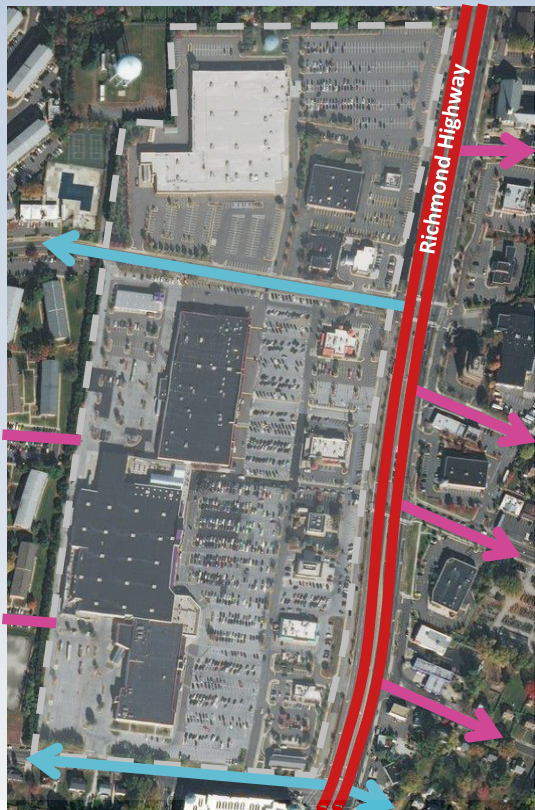
Feature Sustainability & New Technology

Act as stewards of the corridor's future legacy by incorporating smart and sustainable technologies and by integrating green infrastructure into new developments.



Increase Multimodal Connections

Existing Beacon/Groveton Shopping Center



Proposed Beacon/Groveton Concept

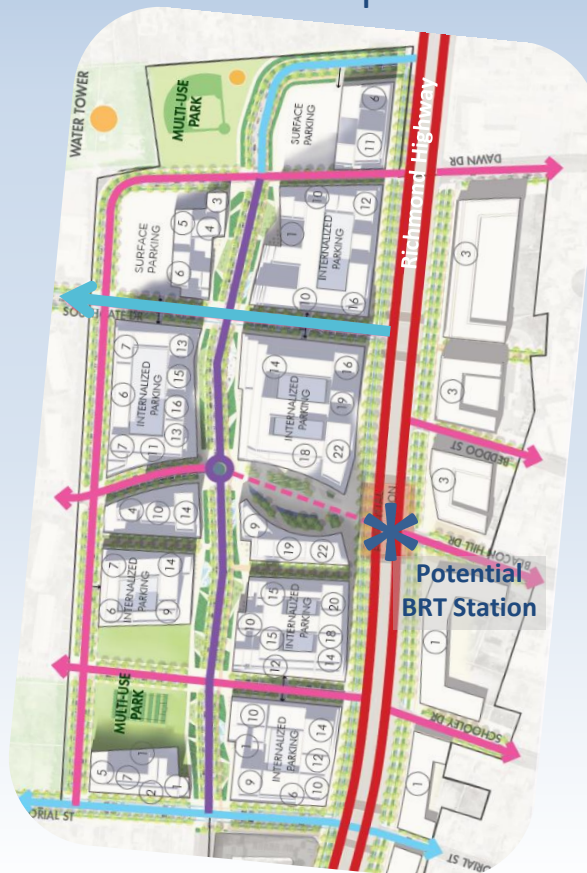
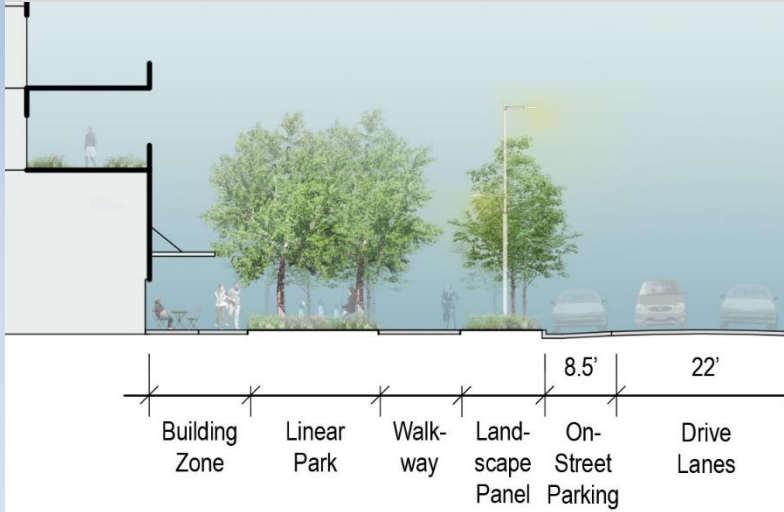


Illustration of a complete street designed for walking, biking & vehicles



Promote multimodal connectivity within and between the CBCs to improve access and provide transportation choices.

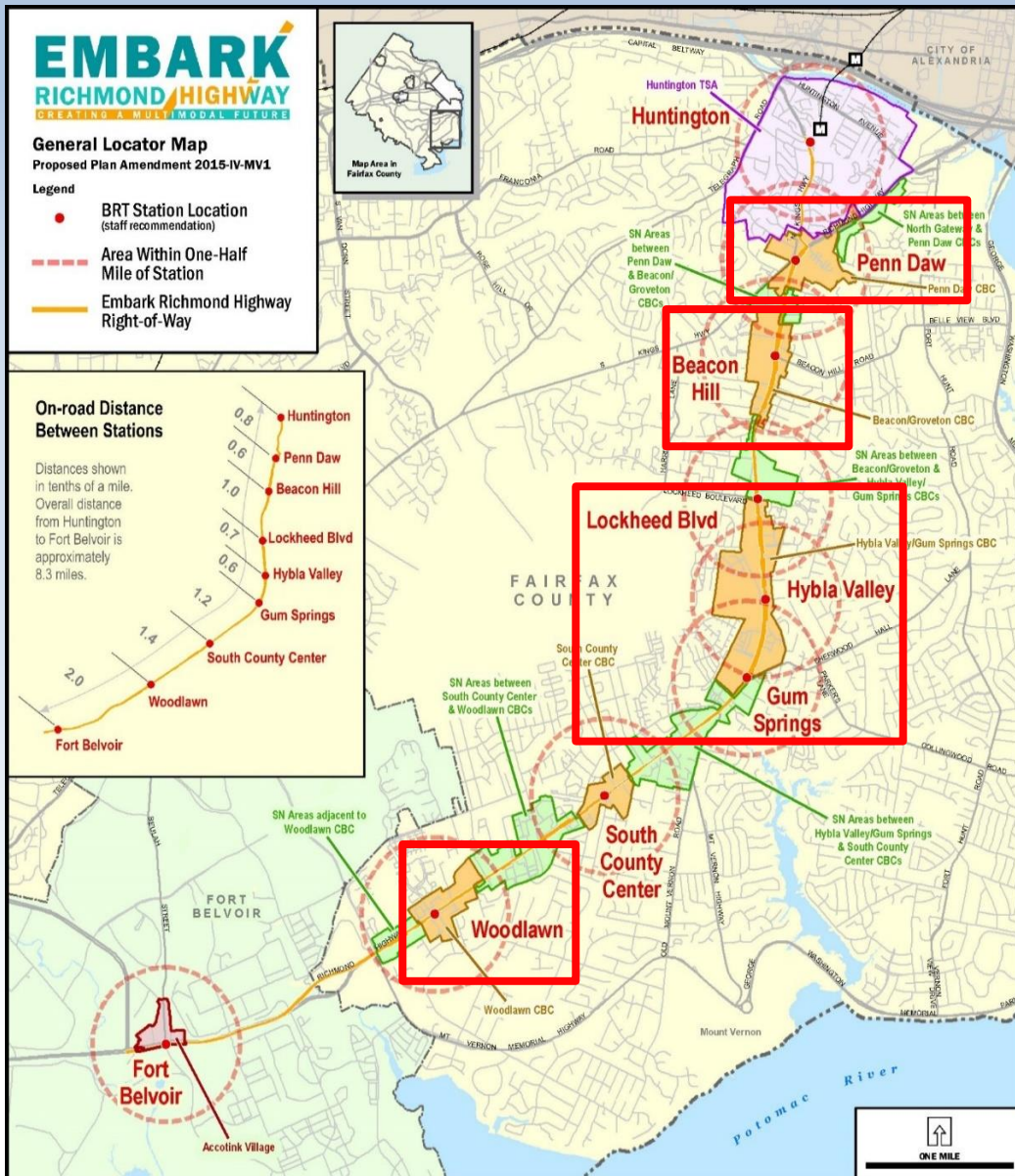
Livability Spine



Ecological Spine

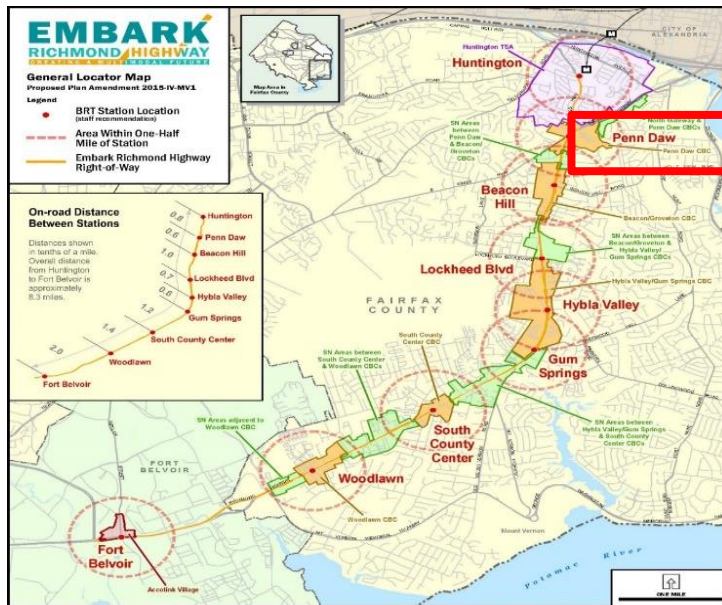
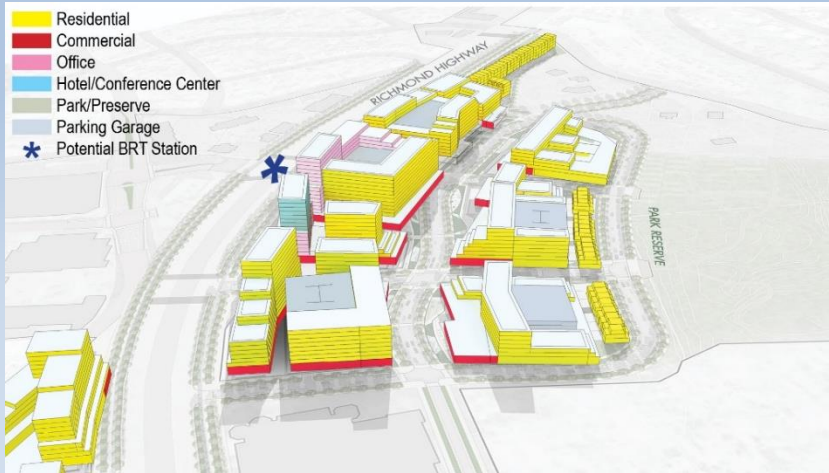


CBC Concepts

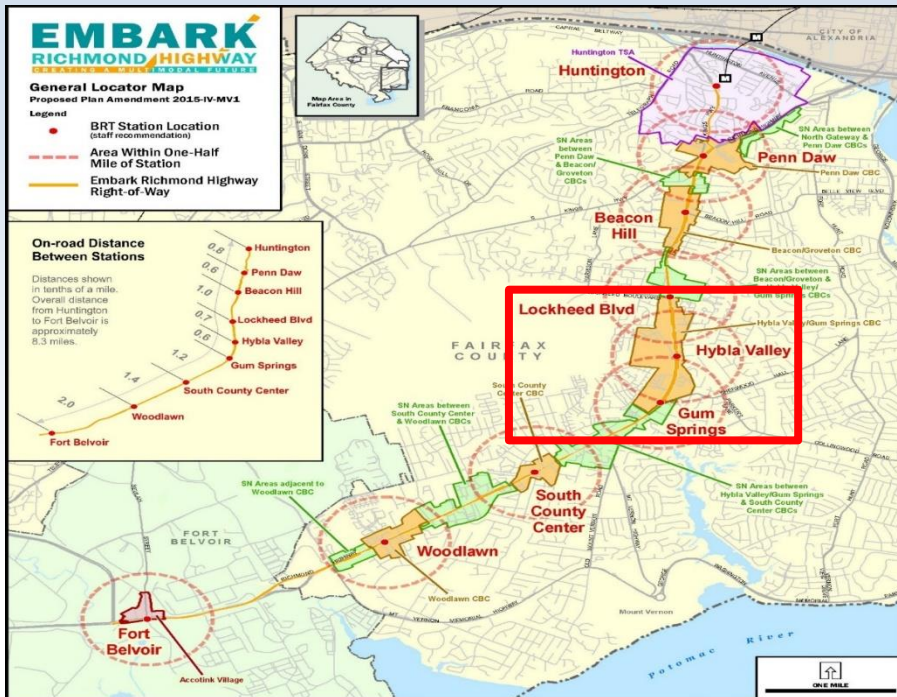
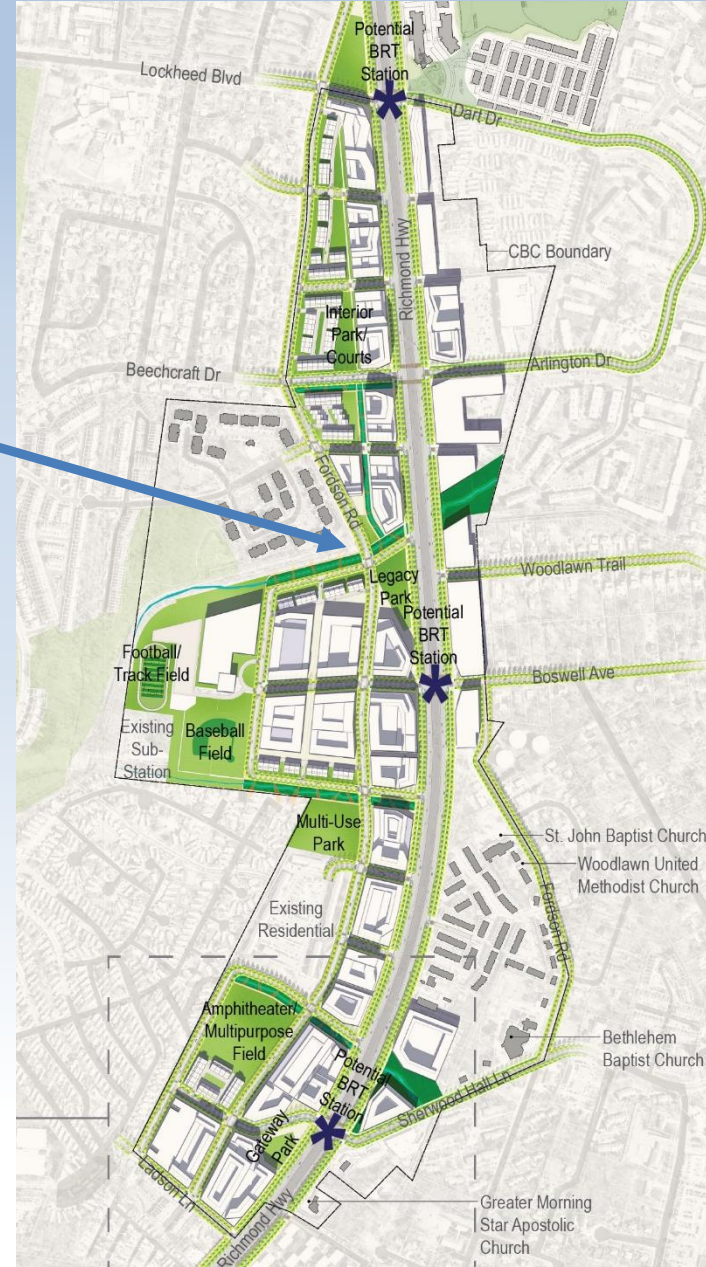


- Majority of redevelopment remains planned within CBCs
- Clearer definition of identity and “place”
 - Penn Daw – Transportation Gateway
 - Beacon/Groveton – Town Center
 - Hybla Valley/Gum Springs – Legacy and Ecological Node
 - Woodlawn – Neighborhood and Tourism Hub
- Areas in between remain planned for primarily residential and institutional uses

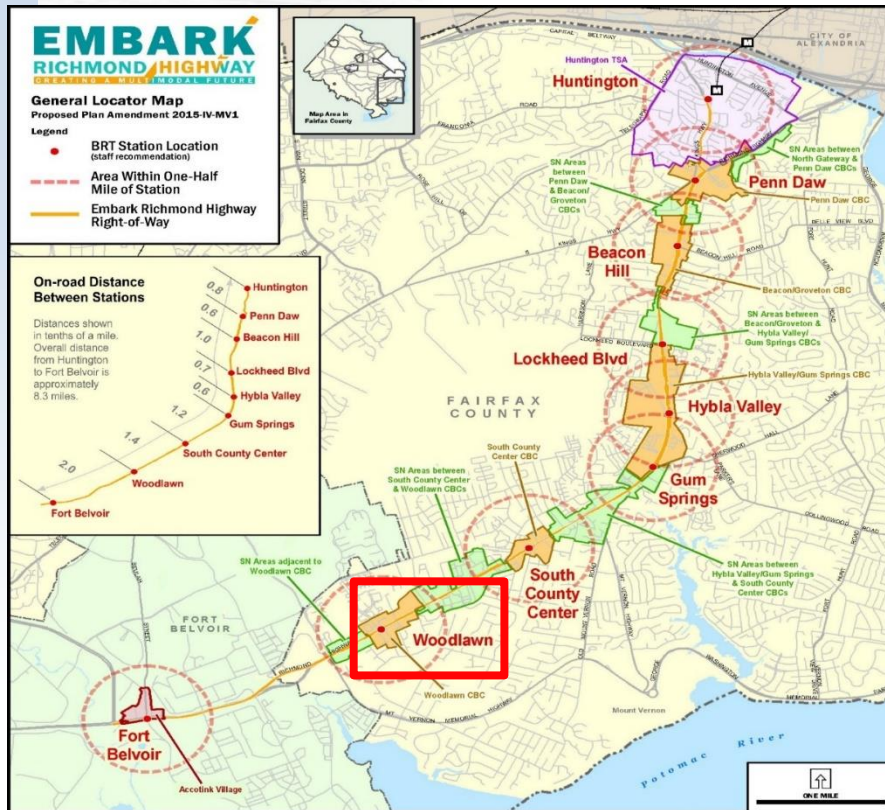
Penn Daw Concept Plan



Hybla Valley/Gum Springs Concept Plan

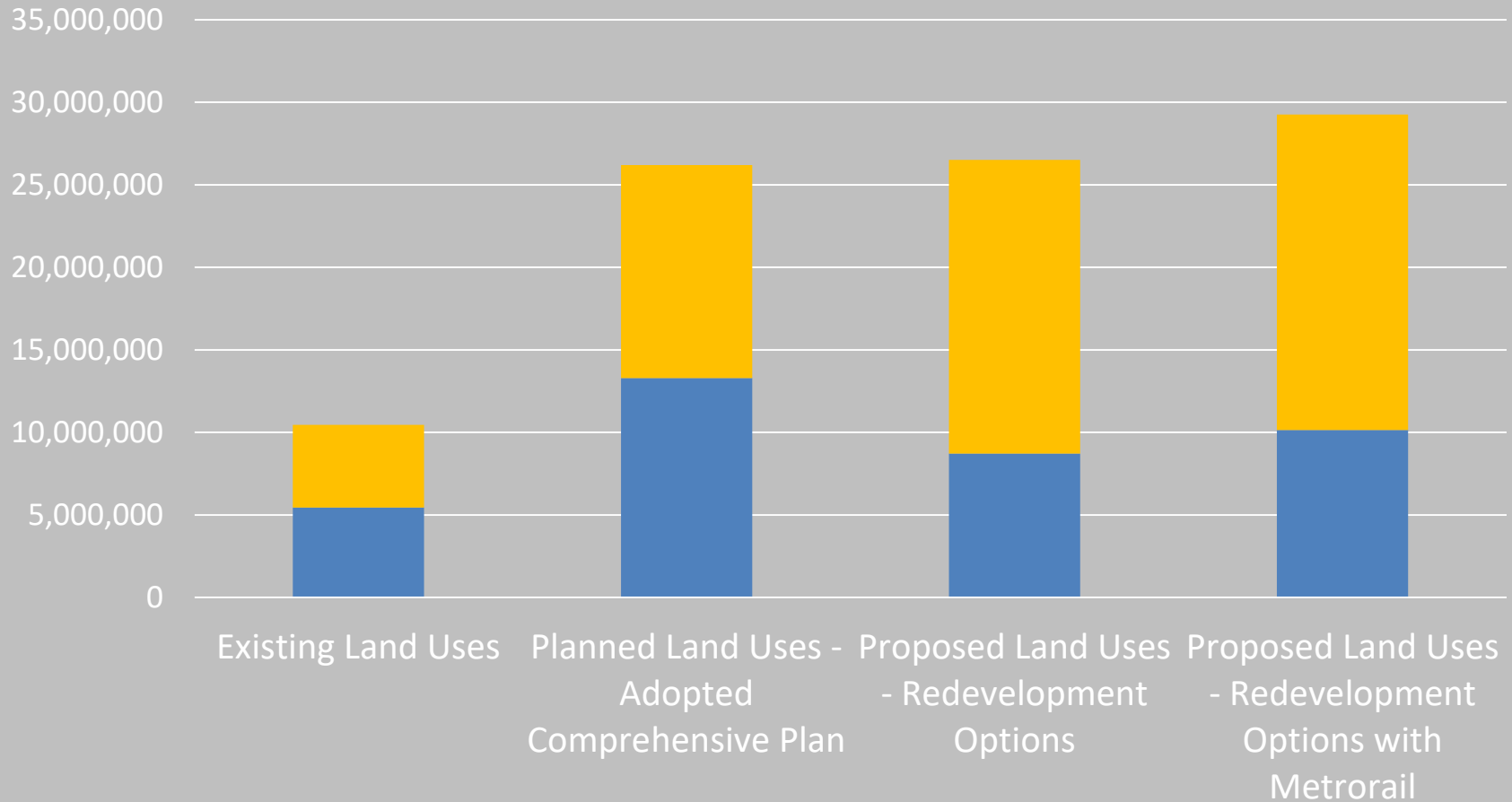


Woodlawn Concept Plan



Balanced Mix of Uses

■ Non-residential Square Feet ■ Residential Square Feet



Realizing the Plan

- Primary mechanism for achieving the Plan's vision is redevelopment, which will occur incrementally through zoning changes
- Redevelopment must be balanced with public facilities and infrastructure
- Phased developments should demonstrate how interim conditions of a development will meet Plan objectives and how impacts are mitigated
- Partnerships of various kinds will be necessary
- Maintenance of the public realm should be a shared public and private sector responsibility

Draft Staff Report/Recent Presentation

Website: <https://www.fairfaxcounty.gov/planning-zoning/embark-richmond-highway>

See the New & Noteworthy section for:

- November 29, 2017 Staff Report and Proposed Comprehensive Plan Text
- January 25, 2018 Planning Commission Power Point Presentation
- January 25, 2018 Planning Commission Public Hearing Video
- How to Submit Comments to the Planning Commission

Q&A