

2009 MARYLAND TRANSPORTATION PLAN



What is the Maryland Transportation Plan and why is it important?

The Maryland Transportation Plan (MTP) establishes a 20-year vision for transportation in the State and provides policy direction through statewide multimodal goals and objectives. The MTP is also used to develop performance measures that assess how effectively the Department is performing its mission. In addition, the MTP guides the development of the Consolidated Transportation Program (CTP), which identifies specific road, bridge, transit, aviation, port, pedestrian and bikeway projects that will be funded over the next six years.

Why does the MTP get updated?

The Maryland Department of Transportation (MDOT) updates the MTP every five years to address current and future transportation challenges and conditions. MDOT is conducting extensive public outreach to engage Maryland's citizens, agencies, and interested organizations in revisions to the transportation system's long-range vision, goals, and objectives. This process will result in a MTP that reflects and responds to the needs of residents, businesses, local governments, and communities.

Some current MDOT priorities and initiatives include:

- System preservation and maintenance
- Safety and security
- System productivity and efficiency
- Freight movement
- Military Base Realignment and Closure (BRAC)
- Environment and air quality
- Transit-oriented development (TOD)
- Smart growth
- Transportation financing



2009 MARYLAND TRANSPORTATION PLAN

Why is my input important?

The perspectives of transportation users are critical in shaping the MTP. MDOT invites public involvement through the following set of activities:

- Public meetings with interest groups and with the State's Metropolitan Planning Organizations;
- Group meetings and interviews with key stakeholders representing a broad constituent base;
- An interactive website with a comment form and a survey (www.mdot.state.md.us/Planning);
- Newsletters and flyers providing timely information about the MTP; and
- Innovative partnerships to encourage public participation.

How is the MTP updated?

The process includes:

- Consultation and coordination with State and local government stakeholders;
- Public involvement to ensure the planning process is inclusive and responsive to a host of diverse interests;
- Development of draft goals and objectives;
- Analysis of issues that will shape existing and future conditions and performance of transportation in Maryland;
- Development of MTP implementation strategies that address capital, operations, management, environmental mitigation, and multimodal connections; and
- Preparation of a draft and final MTP.



Who should I contact for more information?

Ron Spalding, MTP Project Manager
Maryland Department of Transportation
Mailstop 200
7201 Corporate Center Drive
Hanover, MD 21076
mtpupdate2@mdot.state.md.us

Visit:

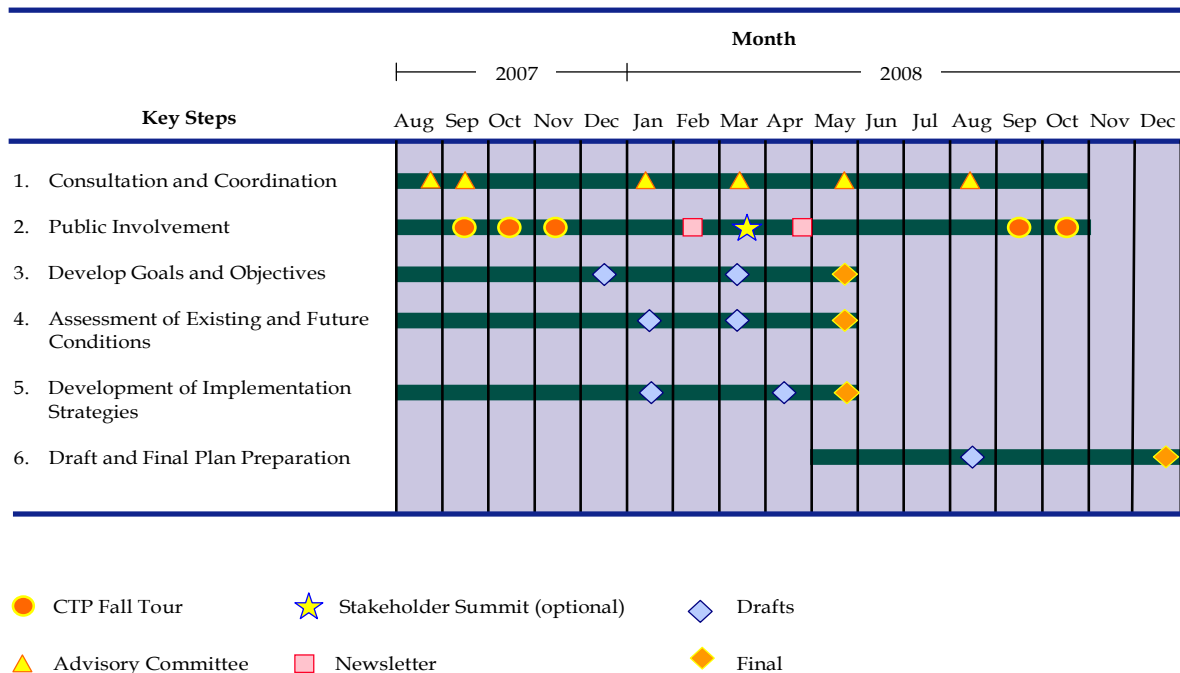
www.mdot.state.md.us/Planning



What is the 2009 Maryland Transportation Plan?

The Maryland Transportation Plan (MTP) is a 20-year vision for transportation in the State. The MTP outlines the State's overarching transportation priorities and helps to define transportation decision-making within this larger context. Maryland's transportation agencies use the MTP as a way to guide plans, policies, and priorities throughout the State. Maryland Department of Transportation (MDOT) currently is conducting extensive public participation outreach to Maryland's citizens, agencies, and interested organizations in order to develop this long-range vision and welcomes your input.

What is the Maryland Transportation Plan update schedule?



Consultation and Coordination (Key Step #1)

The MTP update will be developed in coordination with planning activities conducted by key Maryland government stakeholders. An internal Advisory Committee with representatives from the five modal administrations, the Maryland Transportation Authority (MdTA), and MDOT OP will be formed to guide the MTP update. Efforts will consist of:

- Advisory Committee Meetings
- Modal Administration/ Authority and MDOT Interviews
- MPO Interviews
- Local Agency Coordination
- Transportation Plans and Studies Coordination

Public Involvement (Key Step #2)

The MTP update will ensure that the planning process is inclusive, sensitive, and responsive to the diverse issues of concern to stakeholders and the general public. To meet this goal and Federal requirements, the following techniques will be used:

- Interactive Meetings including MPO Public Meetings, Stakeholder/ Interest Group Meetings, and Stakeholder Interviews
- Library Partnership (*tentative*)
- Newsletters
- Stakeholder Summit (*optional*)
- Interactive Web Site

Development of Draft Goals and Objectives (Key Step #3)

Draft goals and objectives will be based on knowledge of Maryland's transportation system, existing MPO and State plans, Advisory Committee guidance, Federal regulation planning factors, a scan of current long-range plans from 10 to 15 state DOTs, and the coordination/ public outreach efforts.

Assessment of Existing and Future Conditions (Key Step #4)

Summary of the internal and external forces and issues shaping transportation in Maryland over the next 20 years (e.g., demographics, economics, travel usage, travel demand, performance of existing system).

Development of Implementation Strategies (Key Step #5)

Drafted under the guidance of the Advisory Committee and coordination/ public outreach efforts. Federal regulation states that strategies should address capital, operations, management, environmental mitigation, and multimodal connections.

Draft and Final Plan Preparation (Key Step #6)

Due January 2009

How can I get involved?

Contact:

Ron Spalding, MTP Project Manager
Maryland Department of Transportation
mtpupdate2@mdot.state.md.us

Visit the MTP Update web page using the link at:
<http://www.mdot.state.md.us/Planning>

2004 Maryland Transportation Plan Goals and Objectives

Goal 1:

Efficiency

Policy Objectives:

- Extend the useful life of existing facilities and equipment
- Maximize the operational performance and capacity of existing systems

Goal 2:

Mobility

Policy Objectives:

- Relieve congestion by adding key system links
- Support varied modal needs with cost-effective options

Goal 3:

Safety and Security

Policy Objectives:

- Reduce injuries, fatalities, and risks
- Ensure security of the public

Goal 4:

Productivity and Quality

Policy Objectives:

- Reduce project implementation time through process improvements
- Incorporate environmental stewardship into all projects and activities
- Contain costs and leverage resources with business-like organization and innovative approaches to funding and service delivery

2009 Maryland MTP Update MPO Interview Questionnaire

Identifying Fundamental Values/Needs

1. What do you see as the main goals for Statewide transportation?
2. What are the specific transportation needs in your region?
 - a. If your MPO represents adjoining State interests, what are the shared needs in the region you represent?
3. What do you see as the major forces impacting development in your region?
4. What actions is your MPO undertaking to address these needs and issues?
5. What do you think Maryland's transportation agencies can do to address these issues?
 - a. Do you think there are challenges that make it difficult for Maryland's transportation agencies to meet your constituents' transportation needs?
6. What projects are occurring outside your regions that are affecting your region?
7. Have Maryland's transportation agencies implemented any program(s) or initiative(s) to assist with the transportation needs of your region?
 - a. What was the program(s)/initiative(s)?
 - b. In what ways did it/they work?
 - c. In what ways could it/they be improved?

Evaluating Planning Efforts

8. How does your MPO work with Maryland's transportation agencies to coordinate planning efforts?
 - a. In what ways does this work?
 - b. In what ways could this be improved?
9. What do you think are viable options for increasing transportation funding for your region?

Evaluating Public Outreach Efforts

10. How would you rate the quality of public outreach for transportation plans and projects from Maryland's transportation agencies?
11. What suggestions do you have for engaging citizens in your MPO region in discussions of long-range planning?

Conclusion

12. Do you have any other transportation related problems, opportunities, or questions you would like to share?