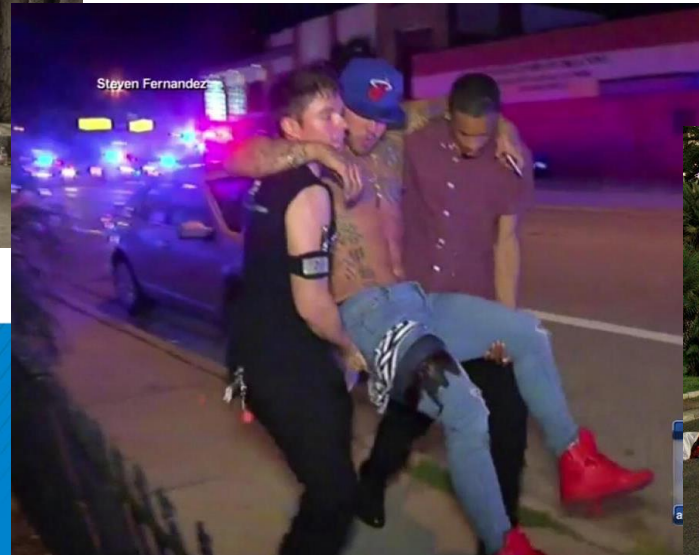


Tactical Emergency Casualty Care (TECC) Community Programs

Geoff Shapiro

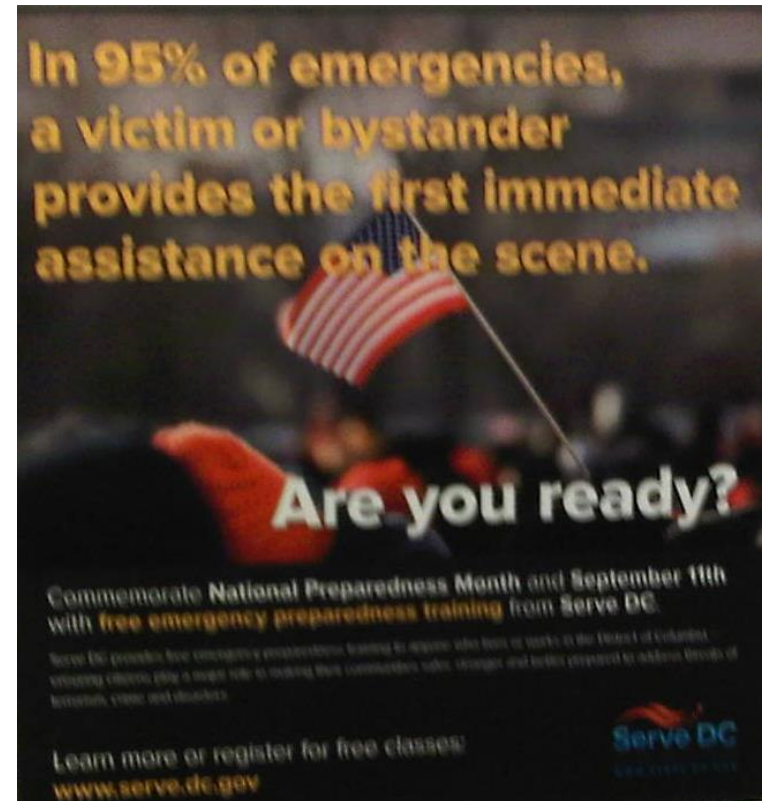
Director, EMS & Operational Medicine
Training

History is not the past...

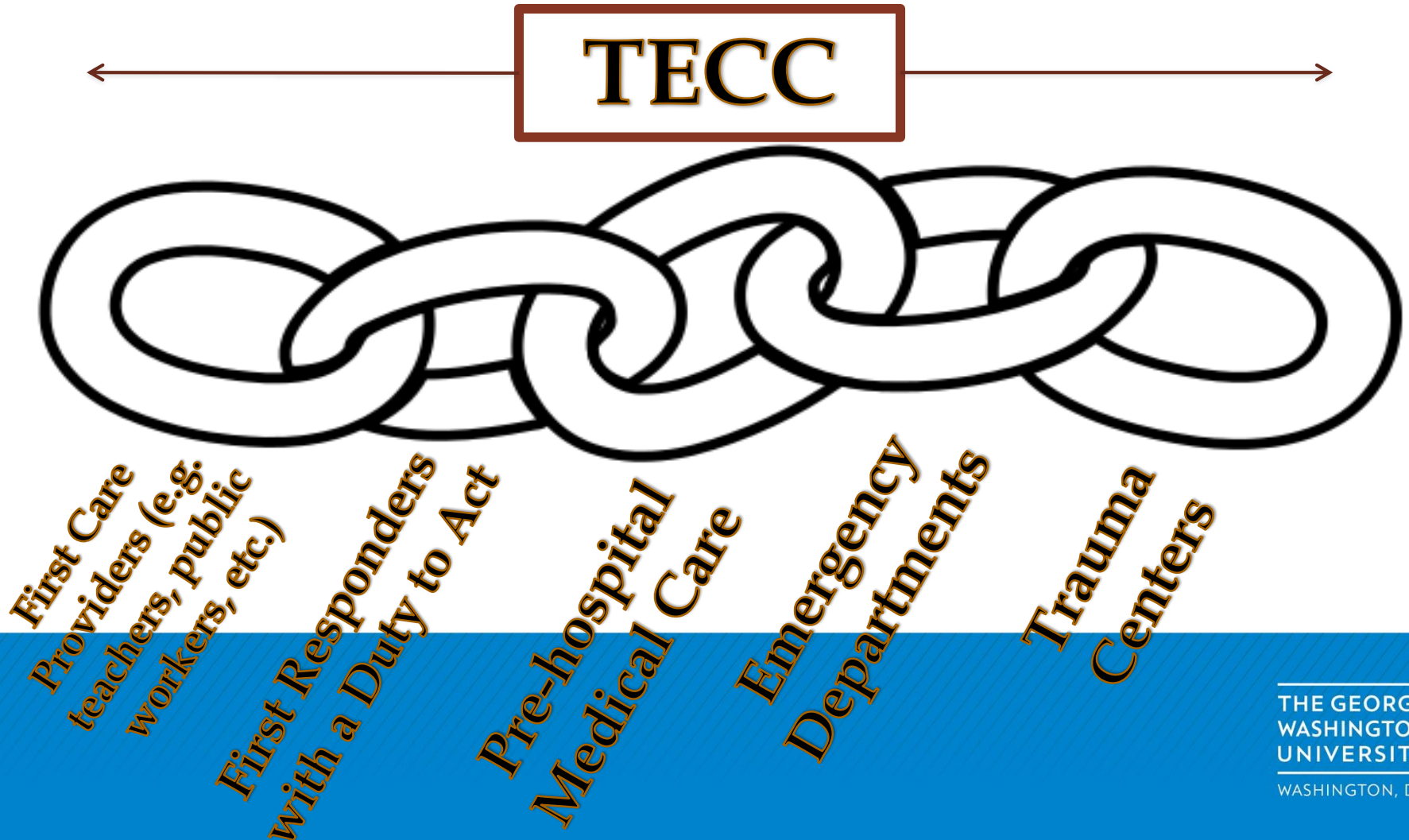


We have to decide

- Ignore?
- Move away?
- Train?
- View as threat?
- Discourage?
- Engage and utilize?



What is TECC?



Civilian Wounding & Fatality Patterns



Civilian initiatives based on military combat data focus **too much** on **external bleeding control** without considering **other preventable lethal injuries**

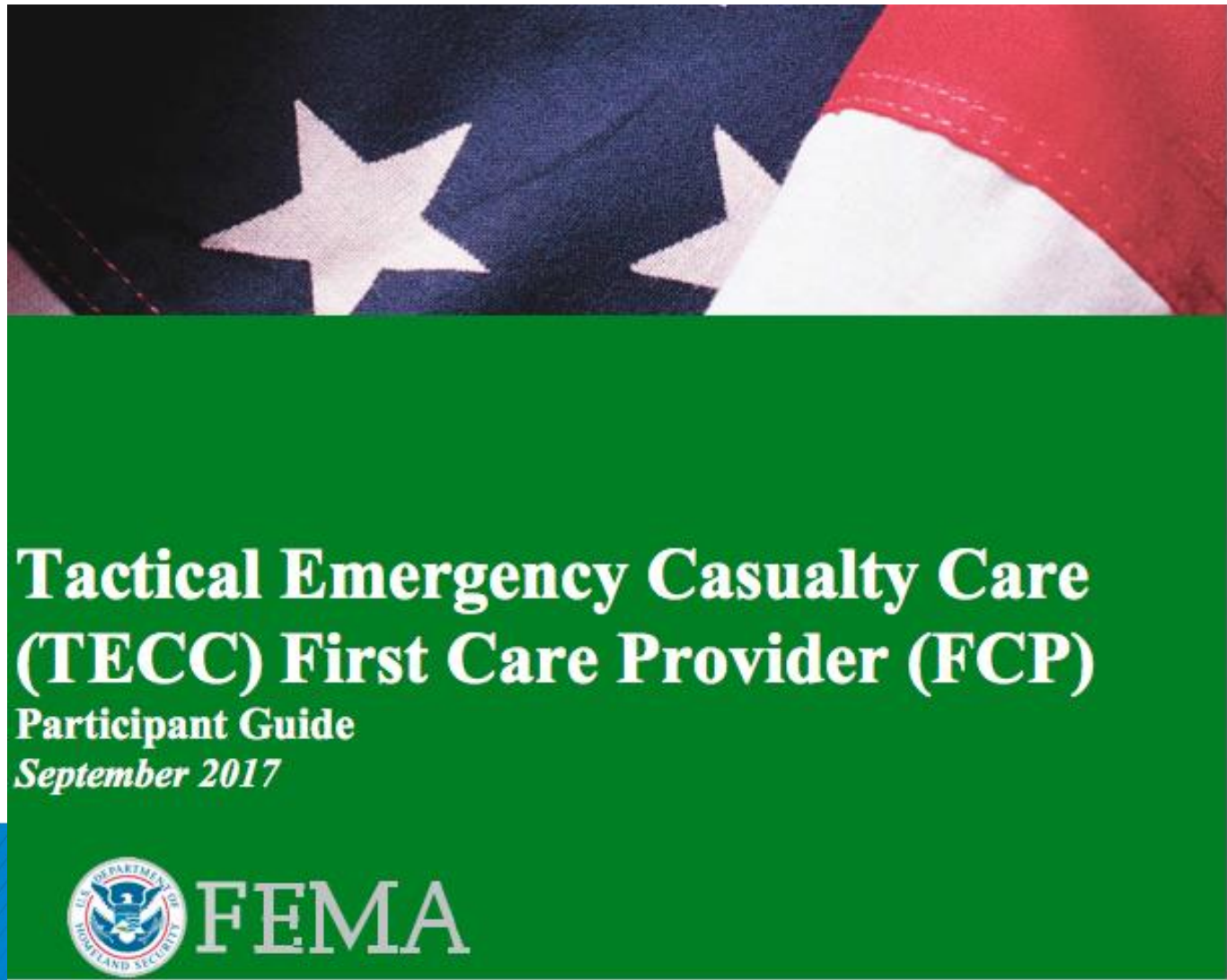


STOP
THE BLEED

Smith, E. R., Shapiro, G., & Sarani, B. (2016). The profile of wounding in civilian public mass shooting fatalities. *Journal Of Trauma & Acute Care Surgery*, 81(1), 86-91.

THE GEORGE
WASHINGTON
UNIVERSITY
WASHINGTON, DC

FEMA CTG



PER-356

THE GEORGE
WASHINGTON
UNIVERSITY
WASHINGTON, DC

TECC for FCP Content

Lesson 1: Recognizing & Responding

Lesson 2: Direct Threat Care

Lesson 3: Indirect Threat Care

Lesson 4: Report; Interacting with Public Safety
Officials

Additional CTG Courses

Whole Community TECC Courses

AWR-359-W: Introduction to TECC

PER-356: TECC FCP

PER-357: TECC for Law Enforcement

PER-358: TECC for Fire/EMS

PER-359: TECC for First Receivers

PER-360: Rescue Task Force

PER-361: RTF Command Considerations

Local Example

Arlington County, VA

Combination of AWR-359-W and “FEMA Be the Help Until Help Arrives”

Online Didactic and In-person psycho-motor.

glshap@gwu.edu
202-994-5355

**THE GEORGE
WASHINGTON
UNIVERSITY**

WASHINGTON, DC