

Health, Recreation and Economic Development



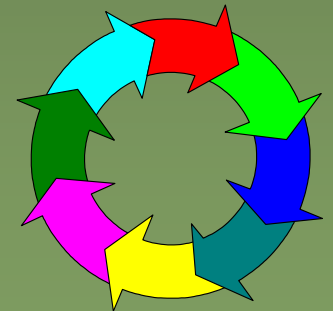
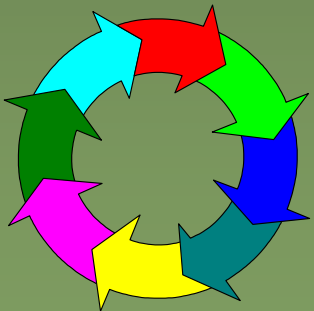
DAVID G. DIONNE

Chief of Trails and Natural Areas

For

Washington COG Trails Symposium

January 30, 2008





Economic Impact of Trails

Demand for Trails is Growing

Conservation Fund Study

- Build a Golf Course impacts 1% of the population
- Build a swimming pool impacts 7% of the population
- Build a trail impacts 50% of the citizens will use the trail.

Anne Arundel County Trails

- On weekends 30% are from outside our jurisdiction
- During the week 86% of our neighbors use the B & A Trail at least once a week, most several times.
- Local economic impact is 8+ million annually

IMPACT

National Trails route through
our Community





What is the ECG?



“Urban Appalachian Trail”
2600 miles
26 major cities
Opportunity
Health
Environment
Transportation
Quality of Life

Calais, Maine



Providence River Walk – Rhode Island



Coastal Georgia Greenway



Key West, Florida



What is the American Discovery Trail?



A Cross County Hiking
Trail

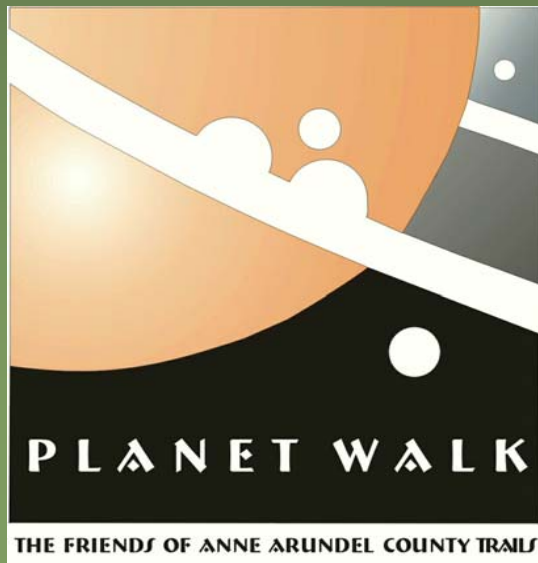
Connects Point Reyes
California to Cape
Henlopen Delaware

BUILDING the COMMUNITY into the TRAIL

FRIENDS of ANNE ARUNDEL COUNTY TRAILS

Enhancement Projects

- Planet Walk



Welcome to the Planet Walk

Planet	Distance from Sun (Miles)
Mercury	36,039,000
Venus	67,388,000
Earth	93,205,000
Mars	141,073,200
Jupiter	484,511,000
Saturn	887,000,000
Uranus	1,797,000,000
Neptune	2,855,000,000
Pluto	3,668,000,000

FOR INFORMATION:
Friends of Anne Arundel County

You are embarking on a journey through your Solar System on the 8.8 mile long "PLANET WALK." Starting at Pluto, the furthest planet from the Sun, travel 8.8 billion miles with the four planets of the Sun's "inner system" and the four planets of the outer Solar System to reach the Sun. The Sun is the center of our Solar System and is a "yellow dwarf" star. It is the largest and most massive object in our Solar System, containing 99.86% of the total mass of the Solar System.

As you travel north you will encounter graphic displays for each of the planets with the displays located at a scaled location relative to its actual location in the Solar System with each display providing a color representation of the planet's size and distance from the Sun.

Phase One concept of the PLANET WALK was completed in 2007. In 2008, the completion of the fabrication and installation of the planet walk by the Board of Anne Arundel County Eagle Scout of 2007 was completed.

The PLANET WALK is only the beginning of the work that will be done in Phase Two. The Friends of Anne Arundel County Trails and Eagle Scout of 2007 plan to include a unique and exciting trail to the Sun in the future.

The Sun is the center of our Solar System and is a "yellow dwarf" star. It is the largest and most massive object in our Solar System, containing 99.86% of the total mass of the Solar System. The Sun is the source of the energy that powers life on Earth and is the source of the light that we see in the sky.

The Sun is the center of our Solar System and is a "yellow dwarf" star. It is the largest and most massive object in our Solar System, containing 99.86% of the total mass of the Solar System. The Sun is the source of the energy that powers life on Earth and is the source of the light that we see in the sky.

The PLANET WALK is planned for completion in the fall of 2009 and will include a unique and exciting trail to the Sun in the future. The Friends of Anne Arundel County Trails is proud to create the fun and educational trail through the planets for the public on the 8.8 mile long trail.



Vision For The Planet Walk

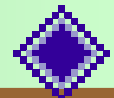
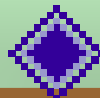
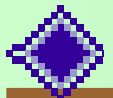
Solar System 3.7 Billion Miles

Scaled on Trail 4.6

Harundale
Mall

Marley Station
Mall

Ranger Station



Mercury Earth

Sun

Venus

Mars

Jupiter

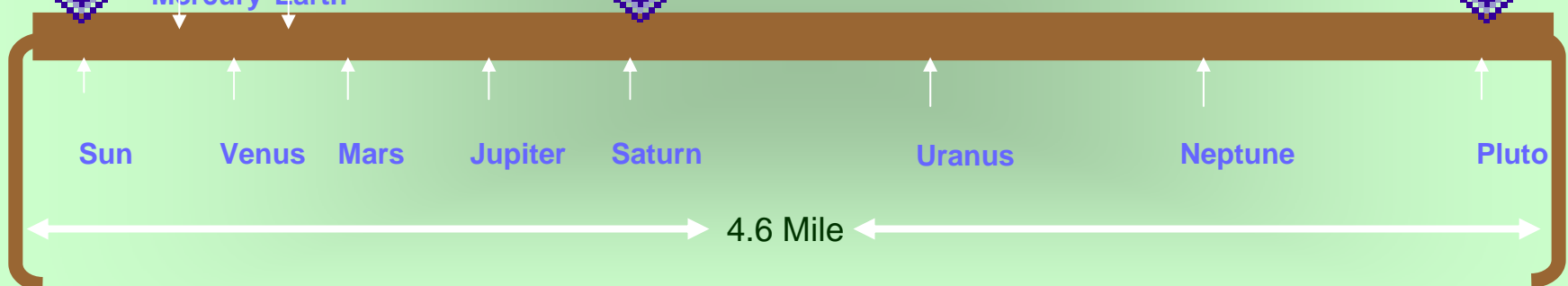
Saturn

Uranus

Neptune

Pluto

4.6 Mile





Friends Vision For The Planet Walk

Create a high quality educational/cultural resource for the county

Scale was selected to accommodate ½ day field trips

Location was selected to provide visitor support facilities

Exhibit complexity is bimodal K-8 and K-12



Public Schools

Private Schools

Community Colleges

Universities

Continuing Education



Friends Vision For The Planet Walk

Create a high quality educational/cultural resource for the county*

Website

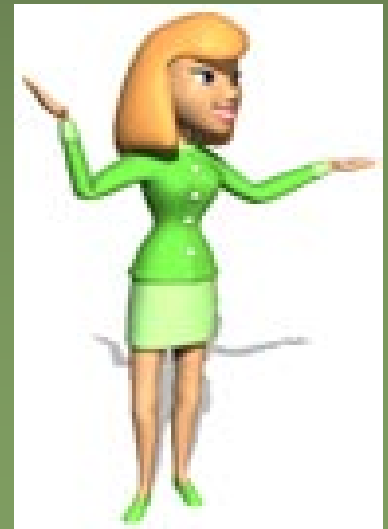


Scaled Model



Pamphlets and Brochures

Teachers and Docents





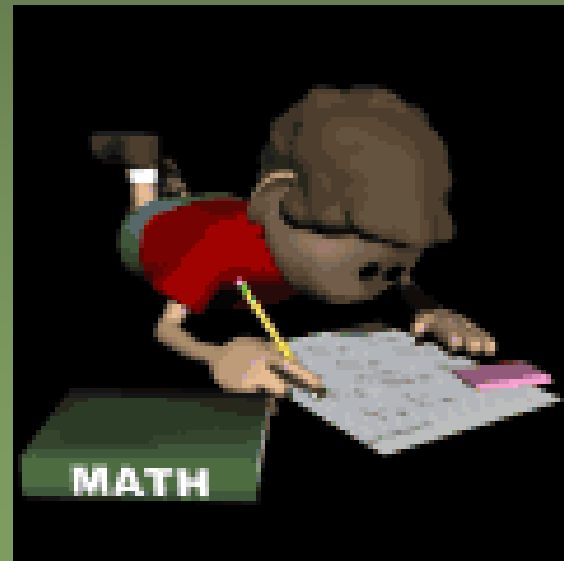
Friends Vision For The Planet Walk

Create a high quality educational/cultural resource for the county

Interdisciplinary

Our educational mission is to create an interdisciplinary experience that supports many subjects.

- Science
- Art
- Math
- History
- Physical Education



BUILDING the COMMUNITY into the TRAIL

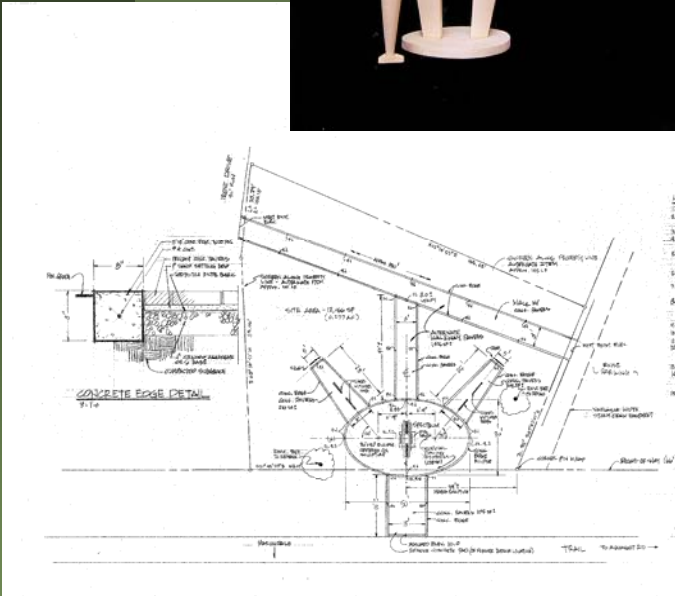
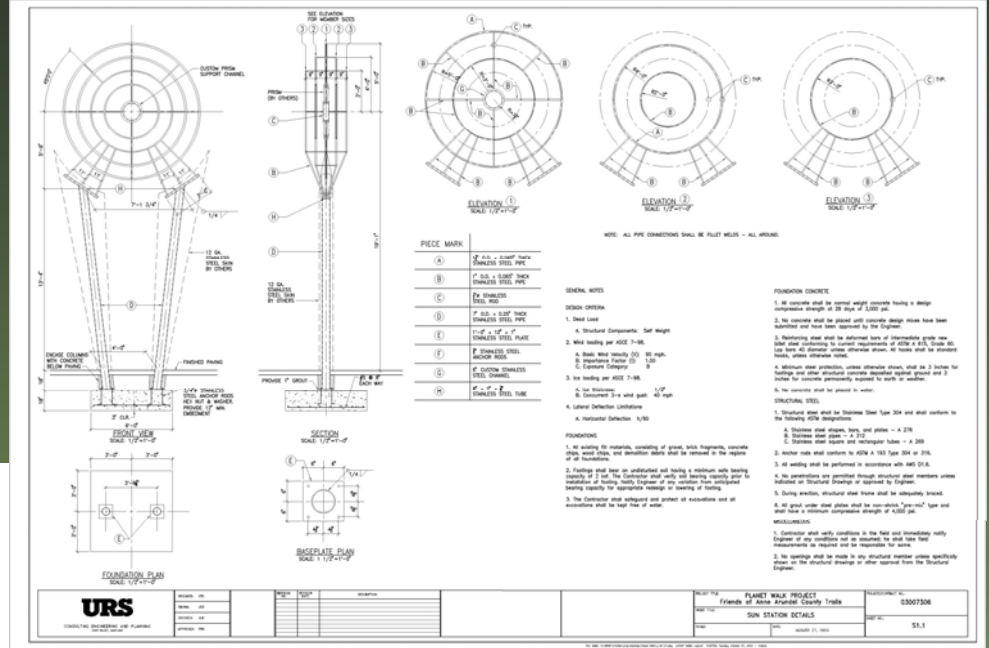
FRIENDS of ANNE ARUNDEL COUNTY TRAILS

Enhancement Projects

- Planet Walk



Sun Station Design



“Spectrum”
by
Judy Sutton-Moore



Sun Station Sculpture



Welcome to the Planet Walk

The sun and planets are 2.5 MILLION miles apart through our Solar System and explore all its wonderful "Worlds" from the B&E Trail to our exciting PLANET WALK.

- The Friends of Anne Arundel County Trails has created our solar system to 4.7 miles and placed it on the B&E Trail with the Sun located at the Maryland Plaza and Pluto at the Queen's Circle at Exchange Heights Road. Starting here at the Sun, the center of our Solar System, the Planet Walk takes you to each of the planets and ends where a group of 1.7 trillion other life forms live.
- As you travel south, at each planet's location you will encounter graphic displays of the planets, including their size and distance from the sun (see chart and map below). The scaled layout of the Planet Walk and the location of the graphic displays on August 1, 2001 represents the completion of Planet Walk of the Planet Walk.

Planet	Distance from Sun (Miles)	Distance from Sun (Miles)	Distance from Sun (Miles)	Distance from Sun (Miles)	Distance from Sun (Miles)	Distance from Sun (Miles)	Distance from Sun (Miles)
Mercury	36,000,000	36,000,000	36,000,000	36,000,000	36,000,000	36,000,000	36,000,000
Venus	67,000,000	67,000,000	67,000,000	67,000,000	67,000,000	67,000,000	67,000,000
Earth	93,000,000	93,000,000	93,000,000	93,000,000	93,000,000	93,000,000	93,000,000
Mars	142,000,000	142,000,000	142,000,000	142,000,000	142,000,000	142,000,000	142,000,000
Jupiter	484,000,000	484,000,000	484,000,000	484,000,000	484,000,000	484,000,000	484,000,000
Saturn	886,000,000	886,000,000	886,000,000	886,000,000	886,000,000	886,000,000	886,000,000
Uranus	1,797,000,000	1,797,000,000	1,797,000,000	1,797,000,000	1,797,000,000	1,797,000,000	1,797,000,000
Neptune	2,816,000,000	2,816,000,000	2,816,000,000	2,816,000,000	2,816,000,000	2,816,000,000	2,816,000,000
Pluto	3,714,000,000	3,714,000,000	3,714,000,000	3,714,000,000	3,714,000,000	3,714,000,000	3,714,000,000

For the ongoing Planet Walk of the PLANET WALK program, the Friends of Anne Arundel County Trails are expanding the PLANET WALK to include a unique "Planet Station" at the Sun and each of the nine Planets. These ten unique exhibits will include models, educational materials, visual aids, artistic presentations, and other features providing the program and unique "Planet Station" with a fascinating and interactive view of what makes up our Solar System and its place in the universe.

The PLANET WALK is scheduled for completion by the fall of 2003 and represents the first of its kind to be built in a neighborhood Trail Park in the United States. It is only greater than the entire "Sun Station" in the Sun Station.

This program is to be funded by public, private, institutional and corporate grants. The Friends of Anne Arundel County Trails are pleased to create this fun and educational trail through our Solar System for all to enjoy! Let your journey begin!

OPTIONAL 25 COUNTRIES WILL BE ADDED TO THE PLANET WALK

FRIENDS OF ANNE ARUNDEL COUNTY TRAILS - PLANET WALK

476 SUN ST
ANNAPOLIS, MD 21403-1000
TEL: 410-293-1000
FAX: 410-293-1000
WWW.FOACCTRAILS.ORG



Planet Walk

Pluto Concept Model





Planet Walk

Earth Concept Model





Planet Walk

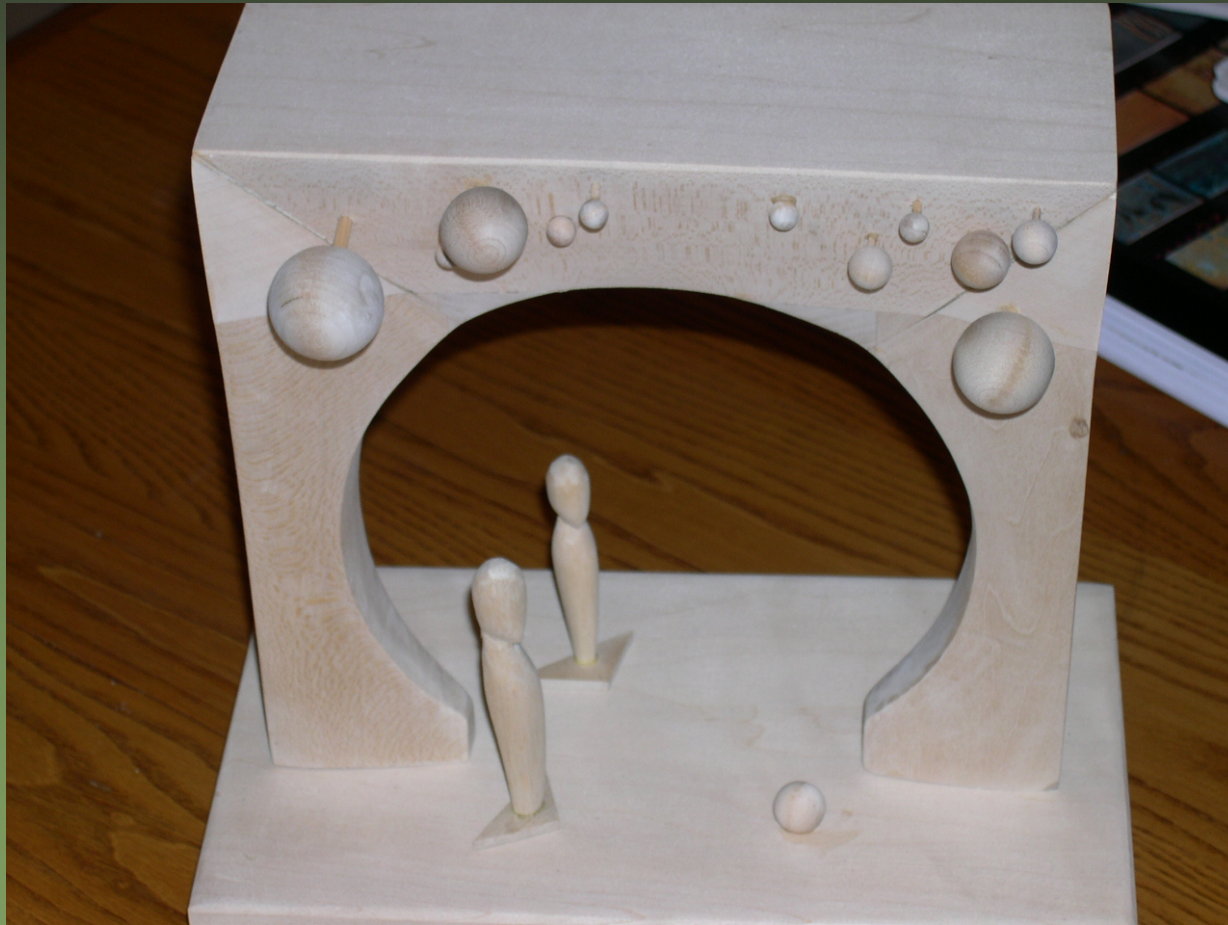
Mercury and Venus Concept Model





Planet Walk

Jupiter Concept Model





Planet Walk

Uranus Concept Model

