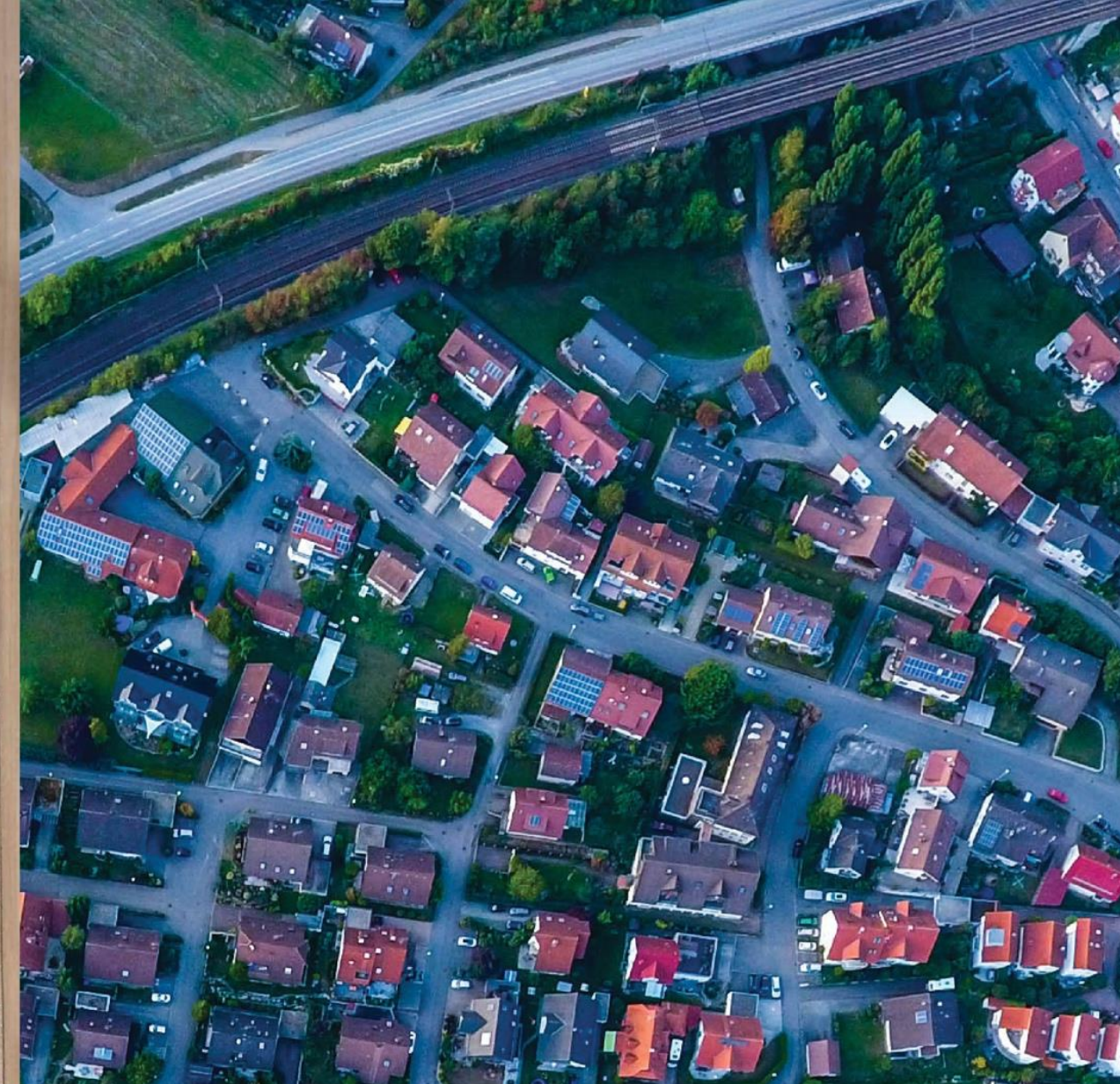
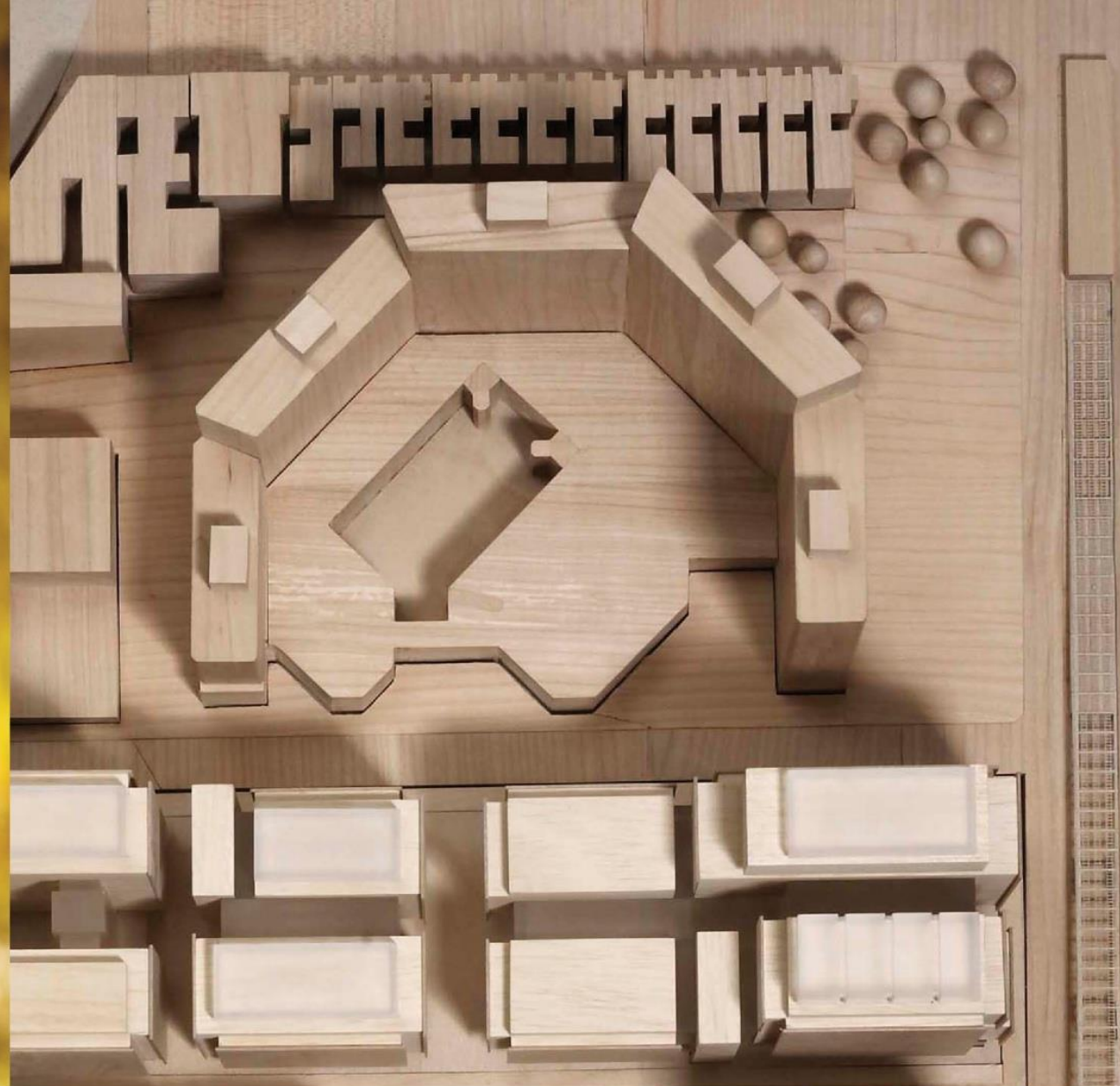
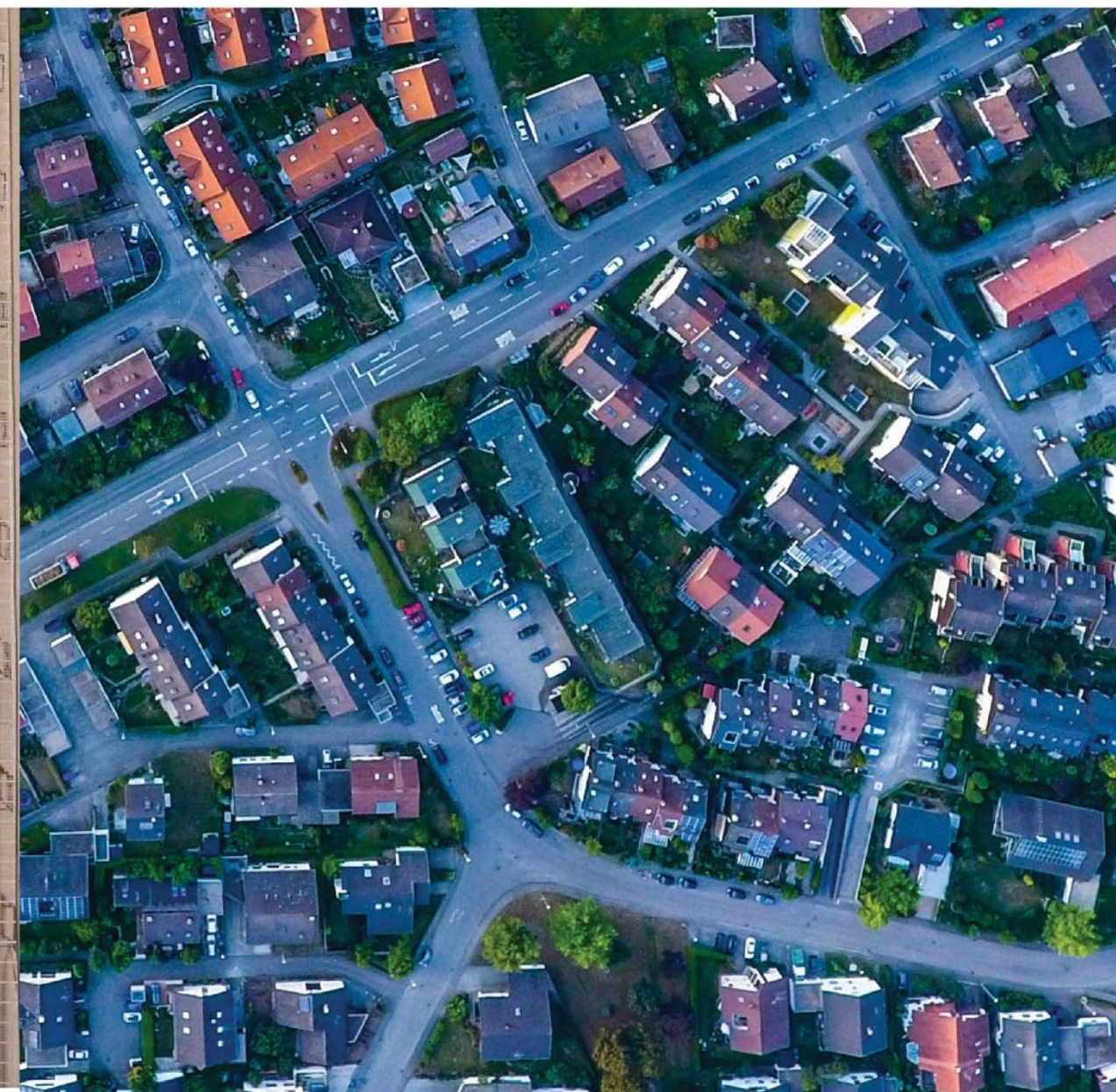




FOR NEIGHBORHOOD DEVELOPMENT



THINKING BEYOND BUILDINGS



LEED for Neighborhood Development

- Mix of prerequisites and credits
- 110 possible points
- Documentation-based review
- Third-party certification





LEED for Neighborhood Development (LEED ND) was engineered to inspire and help create better, more sustainable, well-connected neighborhoods. It looks beyond the scale of buildings to consider entire communities. Projects pursuing LEED ND can be 100% commercial, 100% residential, or any mixture of the two.

Streamlining multiple certifications

Recognition for LEED ND

- LEED v4 Building Design and Construction (BD+C)
 - LT credit LEED ND Location
 - IN credit Walkable Project Site

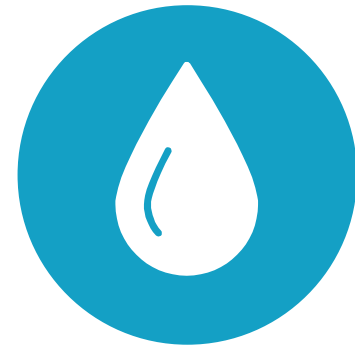




Reduce contribution to global climate change



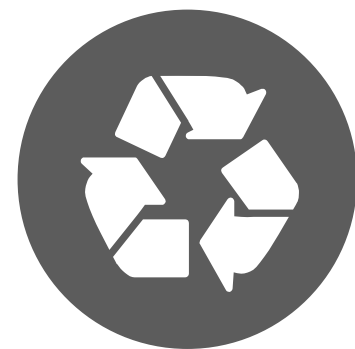
Enhance individual human health



Protect and restore water resources



Protect and enhance biodiversity and ecosystem services



Promote sustainable and regenerative material cycles



Build a green economy



Enhance community quality of life

Review Options in v4

- **Letter of support**

Commitment based
Designed to assist with entitlement process

- **Certified Plan**

Document the project design
Set the project up for future success
SLL and NPD Review also available

- **Certified Built Project**

Document the project as built
Achieve recognition for fulfilling commitments made in ND: Plan
SLL and NPD Review also available



LEED FOR NEIGHBORHOOD DEVELOPMENT

PATHWAYS TO CERTIFICATION



LESS THAN
75% BUILT OUT

Register for LEED for Neighborhood Development: **PLAN**

MORE THAN
75% BUILT OUT

Register for LEED for Neighborhood Development: **BUILT PROJECT**

OPTIONAL REVIEWS

**LETTER OF SUPPORT
PREREQUISITE REVIEW**

PREREQUISITE REVIEW

CERTIFICATION REVIEW

Project must be 100% entitled

Project must be 100% built out

CERTIFICATION

Project receives a LEED for Neighborhood Development: **PLAN** certification

Project receives a LEED for Neighborhood Development: **BUILT PROJECT** certification

Resources

- LEED v4 ND Guide to Certification
 - ★ usgbc.org/cert-guide/neighborhood
- LEED v4 ND Reference Guide
 - ★ usgbc.org/guide/nd
- Sample forms
 - ★ usgbc.org/sampleforms
- Checklist
 - ★ usgbc.org/resources/leed-v4-neighborhood-development-checklist
- Pricing
 - ★ usgbc.org/cert-guide/fees#nd



USGBC Credit Library

Go to usgbc.org/credits



LEED Credentials Join

Store Resources Education Directory Articles Account ▾

FILTER CREDITS

LEED ND: Plan ▾

v4 - LEED v4 ▾

SMART FILTERS

All

Smart location and linkage

Neighborhood pattern & design

Green infrastructure & buildings

Innovation

Regional priority

Appendices

Minimum program requirements

Pilot credits

DOWNLOAD SCORECARD

ADDENDA

Project tools +

Search credits



Match all results Match any results

Name ▾

contains ▾



Clear filters

APPLY



Smart location

Smart location and linkage
Prerequisite | Required



Imperiled species and ecological communities

Smart location and linkage
Prerequisite | Required



Wetlands and water body conservation

Smart location and linkage
Prerequisite | Required



Agricultural land conservation

Smart location and linkage
Prerequisite | Required



Floodplain avoidance

Smart location and linkage
Prerequisite | Required



Preferred locations

Smart location and linkage
Credit | Up to 10 points



LEED ND Eligibility

- Be located in a permanent location on existing land
- Use reasonable LEED boundaries
- Contain at least two buildings and be no larger than 1500 acres (607 hectares)
- Meet all LEED ND prerequisites
- Earn a minimum of 40 points

Smart Location & Linkage

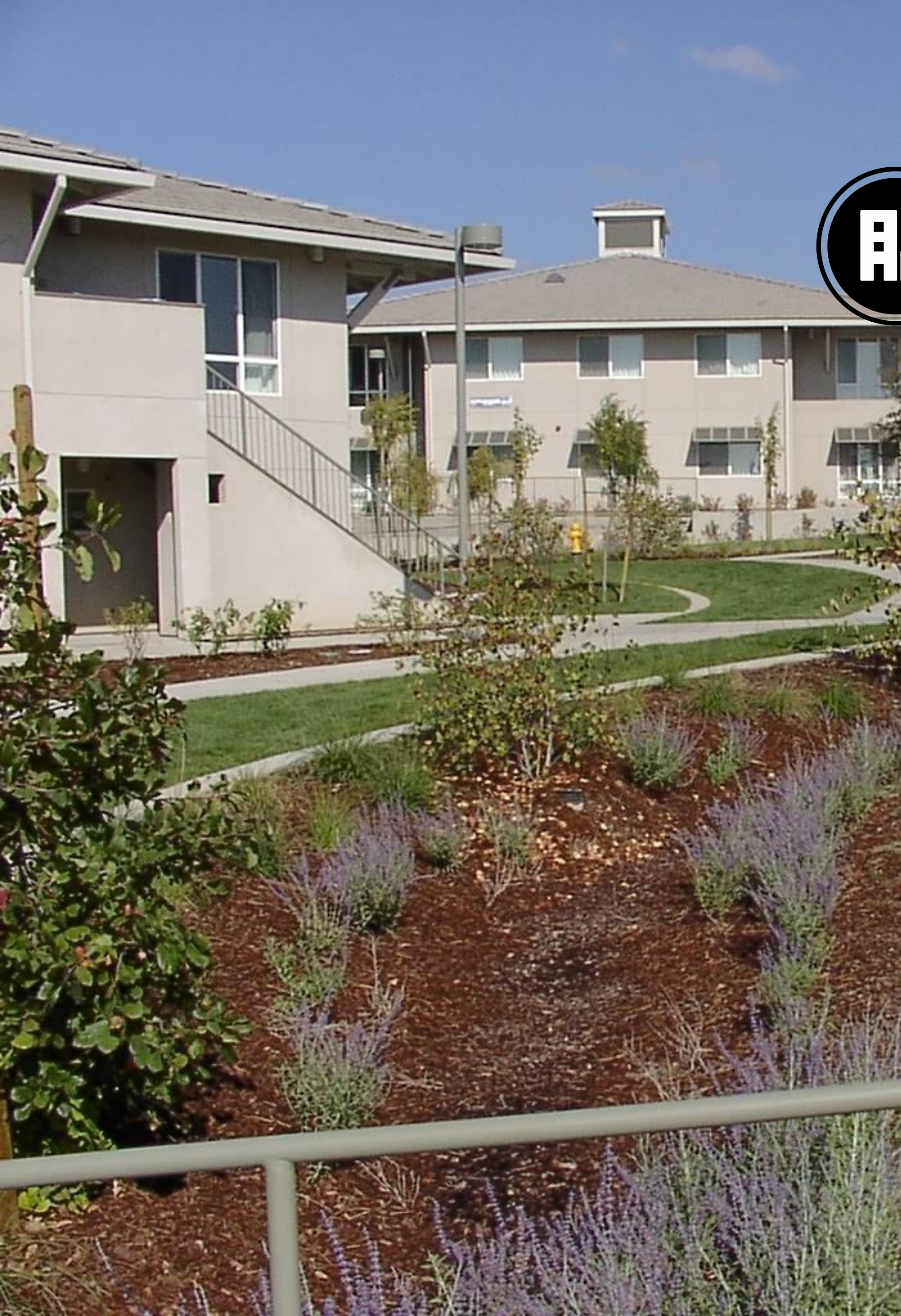
- Avoid urban sprawl and protect vital resources
- Encourage the efficient use of existing infrastructure





Neighborhood Pattern & Design

- Promote walkability
- Encourage the development of economically and socially vibrant communities



Green Infrastructure & Buildings

- Maximize ecological opportunities
- Reduce environmental impacts

Thank You