



SUPPORTING COMMUNITY PLANNING TO IMPLEMENT REGIONAL POLICIES

TPB Project-Level Assistance Programs for Local Governments

John Swanson
Transportation Planner

TPB Community Advisory Committee
April 15, 2021



National Capital Region
Transportation Planning Board

Three Programs

- Transportation Land-Use Connections (TLC) Program (since 2006)
- Regional Safety Program (new this year)
- Transit Within Reach Program (new this year)



Common Features for 3 Programs

- Low-cost (\$30,000 - \$80,000)
- Short-term (8-12 months)
- Quick start-up – projects begin within a few months
- Funded with federal planning funds (for planning activities and design up to 30%)
- Conducted by consultants
- These are NOT grant programs, i.e., they provide technical assistance, not funding. (The TPB does run two actual grant programs: 1) the Enhanced Mobility Program, and 2) the Transportation Alternatives Set-Aside Program.)



Promoting Implementation of TPB Policy Priorities

TLC

- Multimodal transportation options
- Land-use enhancements in activity centers and around high-capacity transit stations
- Access for low-income and minority communities
- Access to transit
- Key regional trails

Regional Safety Program

- Safety improvements for low-income and minority communities
- Improving road user behavior
- Identifying and designing safety countermeasures
- Understanding safety data
- Cross jurisdictional safety improvements

Transit Within Reach Program

- Ped-bike access to transit (design only)



Funding in FY 2022

- \$600,000 TLC (planning and design)
- \$250,000 Regional Safety Program (planning and design)
- \$250,000 Transit Within Reach Program (design projects only)



Schedules for 2021

TLC

- 1/8–3/8 - Application period
- 4/21 - TPB project approval
- June 2022 - Projects completed
- *Next application period expected to open Dec 2022*

Regional Safety Program

- 1/19- 3/22 - Application period
- 6/16 - TPB project approval
- May 2022 - Projects completed
- *Next application period expected to open July or August 2021*

Transit Within Reach Program

- 5/3–7/3 - Application period
- Sept or Oct - TPB project approval
- Dec 2022 - Projects completed
- *Next application period expected to open May 2023*



Program origins

TLC

- Key Idea: Let's support local planning for mixed-use, walkable communities
- Origin: Created following Regional Mobility & Accessibility Scenario Study (2005)

Regional Safety Program

- Key idea: Let's reduce the number of fatalities and injuries on our roadways.
- Origin: Created in response to the findings of a Regional Roadway Safety Study (2020)

Transit Within Reach Program

- Key idea: Let's promote construction of sidewalks, trails, crosswalks, etc. to make it easier to walk or bike to transit
- Origin: Created to support Visualize 2045 (2018) aspirational initiative and the designation of Transit Access Focus Areas (2020)





TLC FY 2022 PROJECT RECOMMENDATIONS



Overview

Program Background

- Began in 2006
- 145 Technical Assistance projects funded for more than \$6 million between 2007-2021
- Projects cover a range of planning issues, including trail planning, corridor studies, and TOD analysis

This Year's Solicitation

- Application solicitation period: January 8–March 8, 2021
- 27 applications were received
 - \$1,645,000 in requested funding
 - \$600,000 available



FY 2022 Funding Recommendations

Jurisdiction Name	Project	Panel Recommendation
College Park	Discovery District Multi-Use Trail Transit Access Plan	\$60,000
District of Columbia	Congress Heights Pedestrian Access Study	\$60,000
District of Columbia	Assessment of Microtransit	\$30,000
Fairfax County	Active Transportation Plan near Huntington Metrorail	\$55,000
Falls Church	East End Transportation Study	\$60,000
Frederick, City of	East Street Redesign	\$60,000
Greenbelt	Greenbelt Road Corridor Plan	\$55,000
Kensington (Mont. Co)	Connecticut Avenue Corridor Planning	\$55,000
Montgomery County	Cool-Street Design Guidelines and Standards	\$50,000
Prince George's County	Anacostia Gateway Connector	\$60,000
Prince William County	Innovation Park Shuttle Service Feasibility Study	\$55,000

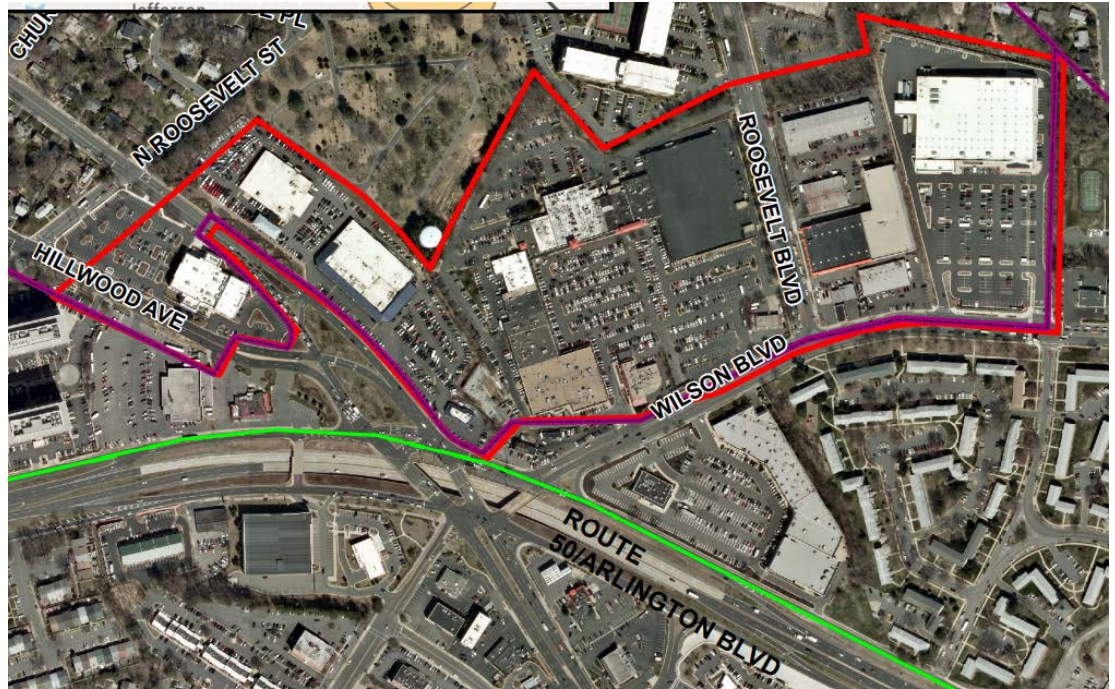


Details from a few examples...



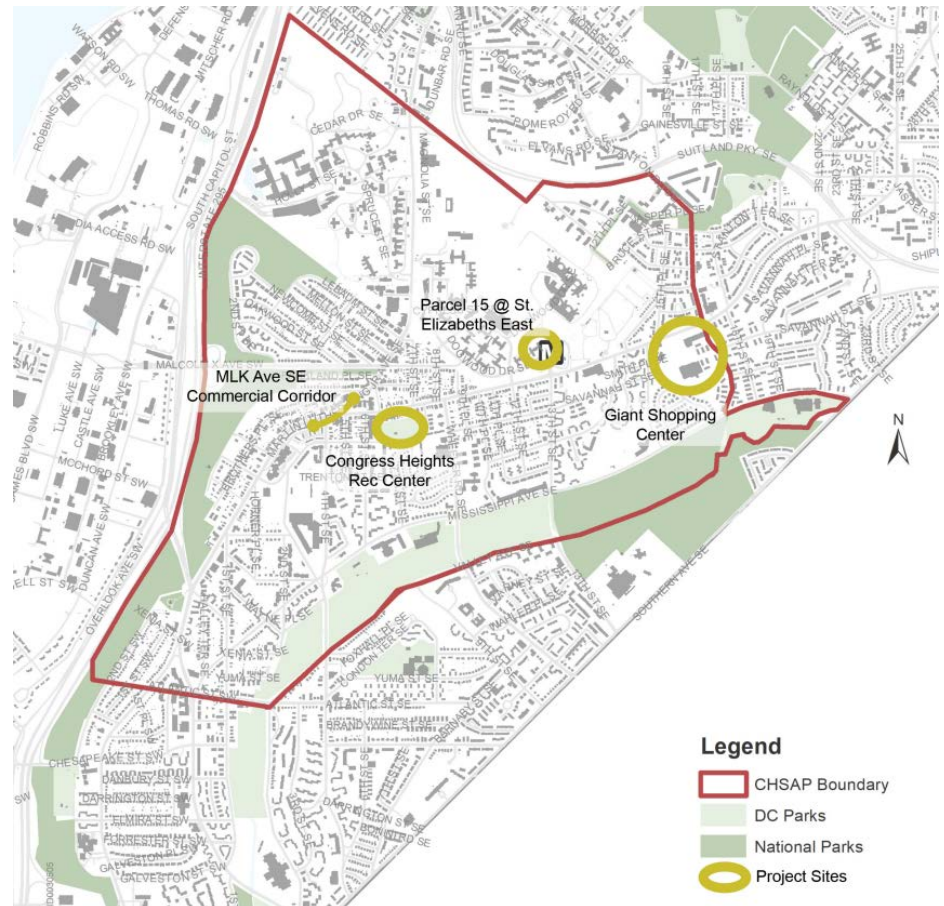
Falls Church: East End Transportation Study

- Approximately 40 acres of commercial properties. Part of Eastern Gateway/Seven Corners
- A “crossroads” -- transportation connections; cultural and commercial; multi-jurisdictional
- Make recommendations for connectivity and accessibility



DC: Congress Heights Pedestrian Access Study

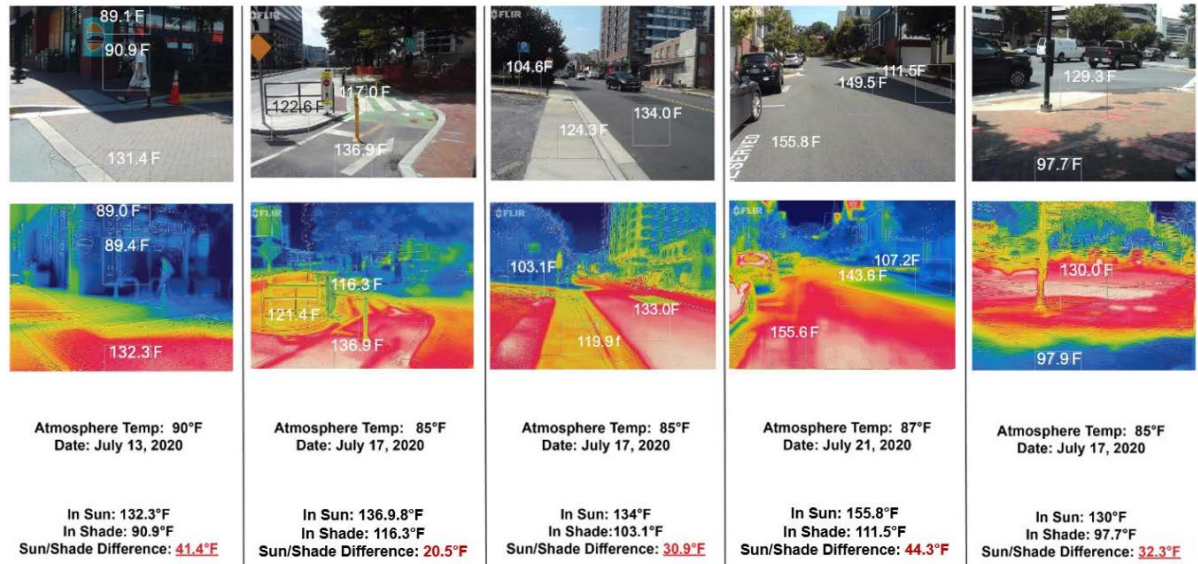
- Focus on pedestrian access to four community-serving sites
- Identify needs for safer pedestrian crossings, more accessible bus stops, enhanced access to green spaces and community services.
- Coordinated with previous and ongoing planning work, including St. Elizabeth's redevelopment



Montgomery County: Cool-Street Design Guidelines & Standards

- Identify ways to mitigate the effects of climate change on the escalating temperatures of the urban streetscape
- Create a more livable, usable, and tolerable streetscape even in the hottest of seasons.
- Build on the Silver Spring Downtown & Adjacent Communities Plan

Commercial Zone: Infrared Surface Temperature Readings



Next Steps for TLC

- Seek TPB approval of project recommendations at meeting on April 21
- Begin consultant selection process in May



John Swanson (TLC and TWR)

Transportation Planner

(202) 962-3295

jswanson@mwkog.org

Jon Schermann (RSP)

Transportation Planner

jschermann@mwkog.org

Nicole McCall (TWR)

Transportation Planner

nmccall@mwkog.org

mwkog.org/TPB

Metropolitan Washington Council of Governments

777 North Capitol Street NE, Suite 300

Washington, DC 20002



National Capital Region
Transportation Planning Board